



## C7601 Installation Instructions C2610 & C2622 Torsion Bar Drop Bracket Bushing Service Kit

### Read and understand all instructions and warnings prior to installation of product and operation of vehicle.

Zone Offroad Products recommends this system be installed by a professional technician. In addition to these instructions, professional knowledge of disassembly/ reassembly procedures and post installation checks must be known. Minimum tool requirements include the following: Assorted metric and standard wrenches, hammer, hydraulic floor jack and a set of jack stands. See the "Special Tools Required" section for additional tools needed to complete this installation properly and safely.

#### » PRODUCT SAFETY WARNING

Certain Zone Suspension Products are intended to improve off-road performance. Modifying your vehicle for off-road use may result in the vehicle handling differently than a factory equipped vehicle. Extreme care must be used to prevent loss of control or vehicle rollover. Failure to drive your modified vehicle safely may result in serious injury or death. Zone Offroad Products does not recommend the combined use of suspension lifts, body lifts, or other lifting devices.

You should never operate your modified vehicle under the influence of alcohol or drugs. Always drive your modified vehicle at reduced speeds to ensure your ability to control your vehicle under all driving conditions. Always wear your seat belt.

#### » TECHNICAL SUPPORT

*Live Chat* provides instant communication with Zone tech support. Anyone can access live chat through a link on [www.zoneoffroad.com](http://www.zoneoffroad.com).

[www.zoneoffroad.com](http://www.zoneoffroad.com) may have additional information about this product including the latest instructions, videos, photos, etc.

Send an e-mail to [tech@zoneoffroad.com](mailto:tech@zoneoffroad.com) detailing your issue for a quick response.

**888.998.ZONE** Call to speak directly with Zone tech support.

#### Difficulty Level

easy 1 2 **3** 4 5 difficult

Estimated installation: 2-3 hours

#### Special Tools Required

GM Style Torsion Bar Tool

#### » PRE-INSTALLATION NOTES

1. Special literature required: OE Service Manual for model/year of vehicle. Refer to manual for proper disassembly/reassembly procedures of OE and related components.
2. Adhere to recommendations when replacement fasteners, retainers and keepers are called out in the OE manual.
3. Larger rim and tire combinations may increase leverage on suspension, steering, and related components. When selecting combinations larger than OE, consider the additional stress you could be inducing on the OE and related components.
4. Post suspension system vehicles may experience drive line vibrations. Angles may require tuning, slider on shaft may require replacement, shafts may need to be lengthened or trued, and U-joints may need to be replaced.
5. Secure and properly block vehicle prior to installation of Zone Offroad Products. Always wear safety glasses when using power tools.
6. If installation is to be performed without a hoist, Zone Offroad Products recommends rear alterations first.
7. Due to payload options and initial ride height variances, the amount of lift is a base figure. Final ride height dimensions may vary in accordance to original vehicle attitude. Always measure the attitude prior to beginning installation.

#### Kit Contents

##### C7601 Box Kit

Qty	Part
2	Hourglass bushing
2	1.575" Sleeve

## INSTALLATION INSTRUCTIONS

1. Park the vehicle on a flat, clean surface and block the rear wheels for safety.

### » FRONT INSTALLATION

1. Raise the front of the vehicle and support with jack stands under the frame rails.
2. Measure and record the length of the exposed thread on the torsion bar adjuster bolts Figure 1. Record the lengths here for use later during the installation



Figure 1

3. Unload the torsion bars but do not remove. Save adjuster bolt/retainer block.
4. Mark the torsion bars with front, rear, drv, passenger and mark orientation.
5. Remove the torsion bars by pulling them rearward out of the lower control arms. Set the torsion bars aside.
6. Remove the factory torsion bar crossmember from the Zone drop brackets attached to the frame



Figure 2

7. Remove the old sleeves and bushings from the torsion bar drop brackets. Then install the new provided bushings then sleeves in the drop brackets.

### Important—measure before starting!

Measure from the center of the wheel up to the bottom edge of the wheel opening

LF \_\_\_\_\_ RF \_\_\_\_\_

LR \_\_\_\_\_ RR \_\_\_\_\_

### Step 7

Using silicon lubricant on the bushing to help installation of bushing in drop bracket and sleeve in bushing.



Figure 3

8. Attach the factory torsion bar crossmember to the new drop brackets and fasten with the original bolts **Figure 41**. Be sure the large torsion bar holes in the crossmember are toward the front. Torque factory bolts to 90 ft-lbs.

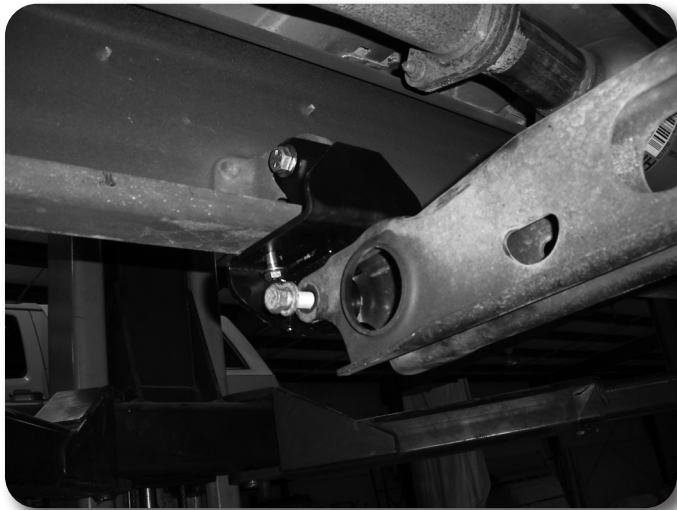


Figure 4

9. Locate the original torsion bar adjuster plates. Slide the torsion bars back into the torsion bar crossmember and into the adjuster plates. The plates should fit on the torsion bars so that they positioned roughly horizontal in the vehicle.
10. Load the torsion bars with the appropriate tool. Reinstall the adjuster bolt/retaining plate assembly. Reset the torsion bar adjuster bolt position to the original height measurement taken at the beginning of the installation.
11. Lower the vehicle to the ground.

## »» **POST-INSTALLATION**

1. Check all hardware for proper torque..
2. The vehicle will need a complete front end alignment.
3. Check all hardware after 500 miles.
4. Adjust headlights.

## **Post-Installation Warnings**

1. Check all fasteners for proper torque. Check to ensure for adequate clearance between all rotating, mobile, fixed, and heated members. Verify clearance between exhaust and brake lines, fuel lines, fuel tank, floor boards and wiring harness. Check steering gear for clearance. Test and inspect brake system.
2. Perform steering sweep to ensure front brake hoses have adequate slack and do not contact any rotating, mobile or heated members. Inspect rear brake hoses at full extension for adequate slack. Failure to perform hose check/ replacement may result in component failure.
3. Perform head light check and adjustment.
4. Re-torque all fasteners after 500 miles. Always inspect fasteners and components during routine servicing.

## **Recommend Alignment Specifications**

### **CASTER (DRV/PASS)**

$4.00^{\circ} \pm 1.00^{\circ} / 4.75^{\circ} \pm 1.00^{\circ}$

### **CAMBER**

$+0.25^{\circ} \pm 0.50^{\circ}$

### **TOE**

$+0.10^{\circ} \pm 0.20^{\circ}$