



## #3300, 7300 Installation Instructions 2004 Ford F-150 Single Steering Stabilizer

### Read and understand all instructions and warnings prior to installation of product and operation of vehicle.

Zone Offroad Products recommends this system be installed by a professional technician. In addition to these instructions, professional knowledge of disassembly/ reassembly procedures and post installation checks must be known. Minimum tool requirements include the following: Assorted metric and standard wrenches, hammer, hydraulic floor jack and a set of jack stands. See the "Special Tools Required" section for additional tools needed to complete this installation properly and safely.

#### »» PRODUCT SAFETY WARNING

Certain Zone Suspension Products are intended to improve off-road performance. Modifying your vehicle for off-road use may result in the vehicle handling differently than a factory equipped vehicle. Extreme care must be used to prevent loss of control or vehicle rollover. Failure to drive your modified vehicle safely may result in serious injury or death. Zone Offroad Products does not recommend the combined use of suspension lifts, body lifts, or other lifting devices.

You should never operate your modified vehicle under the influence of alcohol or drugs. Always drive your modified vehicle at reduced speeds to ensure your ability to control your vehicle under all driving conditions. Always wear your seat belt.

#### »» TECHNICAL SUPPORT

*Live Chat* provides instant communication with Zone tech support. Anyone can access live chat through a link on [www.zoneoffroad.com](http://www.zoneoffroad.com).

[www.zoneoffroad.com](http://www.zoneoffroad.com) may have additional information about this product including the latest instructions, videos, photos, etc.

Send an e-mail to [tech@zoneoffroad.com](mailto:tech@zoneoffroad.com) detailing your issue for a quick response.

**888.998.ZONE** Call to speak directly with Zone tech support.

#### Difficulty Level

easy (1) 2 3 4 5 difficult

Estimated installation: .5 hours

#### Special Tools Required

#### Tire/Wheel Fitment

Does not work with stock 17" rims

#### »» PRE-INSTALLATION NOTES

1. Special literature required: OE Service Manual for model/year of vehicle. Refer to manual for proper disassembly/reassembly procedures of OE and related components.
2. Adhere to recommendations when replacement fasteners, retainers and keepers are called out in the OE manual.
3. Larger rim and tire combinations may increase leverage on suspension, steering, and related components. When selecting combinations larger than OE, consider the additional stress you could be inducing on the OE and related components.
4. Post suspension system vehicles may experience drive line vibrations. Angles may require tuning, slider on shaft may require replacement, shafts may need to be lengthened or trued, and U-joints may need to be replaced.
5. Secure and properly block vehicle prior to installation of Zone Offroad Products. Always wear safety glasses when using power tools.
6. If installation is to be performed without a hoist, Zone Offroad Products recommends rear alterations first.
7. Due to payload options and initial ride height variances, the amount of lift is a base figure. Final ride height dimensions may vary in accordance to original vehicle attitude. Always measure the attitude prior to beginning installation.

rev030811

## Kit Contents

Qty	Part	Qty	Part
1	Tie Rod End Bracket	4	Stem Bushing
1	Inside Stabilizer Bracket	4	Stem Washer
2	5/16" x 1" x 1-3/4" Round U-bolt	2	3/8"-24 Jam Nut
1	5/8"-11 x 5" bolt - grade 8	2	3/8"-24 Nut
2	5/8" SAE Washer	1	Shock Sticker
1	5/8" Prevailing torque nut	1	Cylinder (Stem - Stem)
1	Steering Rack Spacer		
1	Bolt Pack		

## Installation Instructions

1. Park vehicle on clean flat surface with steering wheel centered. Block rear wheels for safety.
2. Install bracket as shown on tie rod end. Edge of bracket will be flush with edge of tie rod. Attach with 5/16" u-bolts. Tighten hardware to 17 ft-lbs. **Figure 1**

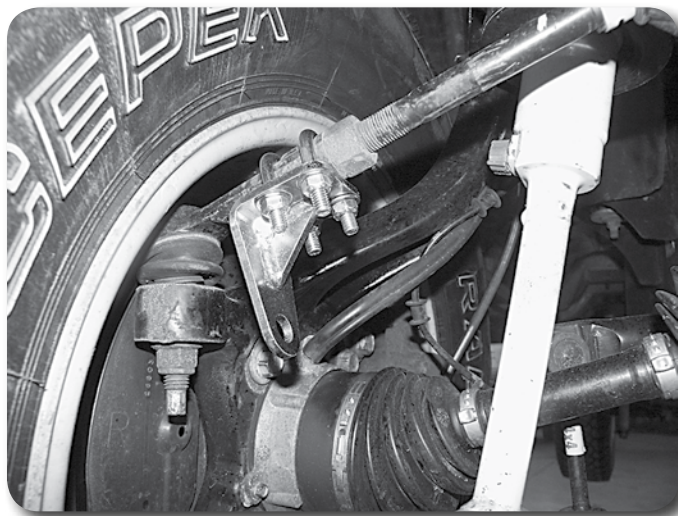


Figure 1

### Note:

The rack spacer will go above the stabilizer mounting bracket and below the steering rack.

3. Install passenger's side stabilizer bracket in place of the factory bracket with new 5/8" x 5" bolt with a 1" spacer under the steering rack and above the stabilizer bracket. Attach stabilizer bracket to the frame with the factory 12mm bolt. Tighten 5/8" bolt to 125 ft-lbs and 12mm bolt to 60 ft-lbs.
4. Install bushings and cup washers on end of stabilizer. Attach stabilizer to passenger's side rack and pinion mount, included with suspension lift kit and tie rod mount. **Figure 2**

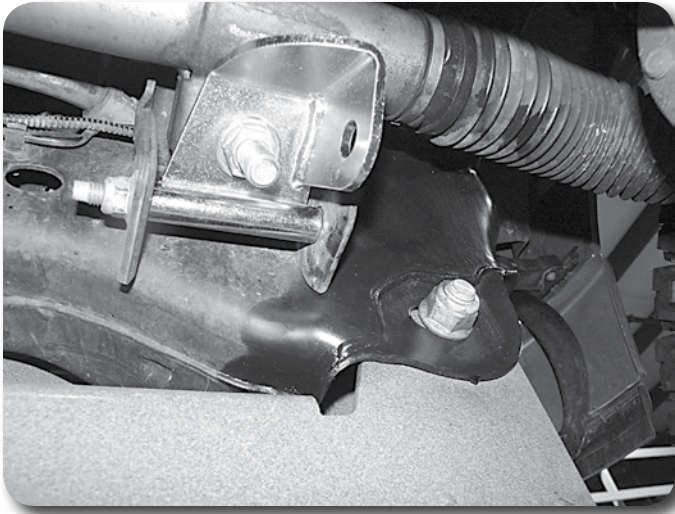


Figure 2

5. Tighten 3/8" nuts on stabilizer until bushings begin to expand, lock off jam nuts to 25 ft-lbs. Figure 3

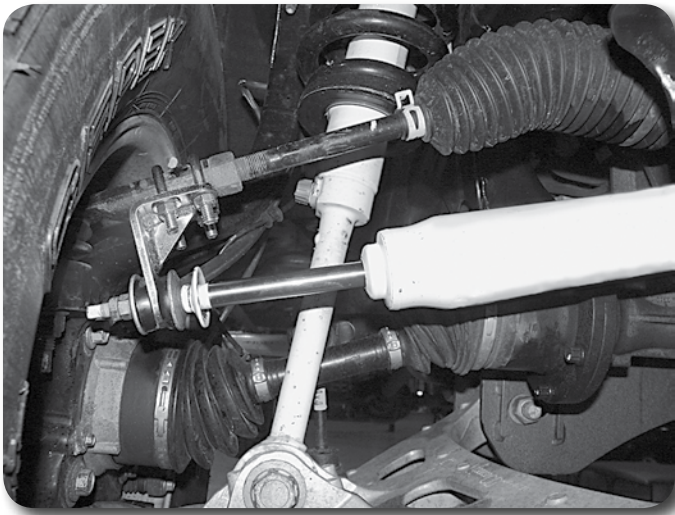


Figure 3

6. Cycle steering to ensure no interference occurs.
7. Recheck all fasteners. Check again after 500 miles and at regularly scheduled maintenance intervals.