

18-22 JEEP WRANGLER JL APEX SERIES REAR BUMPER ATTJL01B109-BX



CAUTION BEFORE INSTALLING

Before installation - Read and understand all instructions, warnings, cautions, and notes contained in this installation instruction guide. Consult your vehicle owner's manual for proper disconnection of electrical and lifting of vehicle if required for installation of this product.

This install may require some technical skills and knowledge of basic mechanical work. If you do not feel that you are capable of performing this install please take this product to a trained professional.

After reading this guide please contact us with any questions or concerns before installing product.
Customer Service: (626) 369-2121

ATTICA4X4 is not responsible for any bodily injury or harm to you or your vehicle as a result of an improper install.

Proper installation of this kit requires knowledge of the factory recommended procedures for removal and installation of original equipment components. We recommend that the factory shop manual and any special tools needed to service your vehicle be on hand during the installation. Installation of this kit without proper knowledge of the factory recommended procedures may affect the performance of these components and the safety of the vehicle.

- **Always wear eye protection when operating power tools.** •

Inspect all contents of this package to make sure product is not damaged and all installation hardware has been included. If parts are missing from kit, please be prepared to provide the following information:

- Name of purchase location
- Date above Bar Code
- Bar Code on side of box
- Date inside box cover

INSTALLATION MANUAL

TOOLS REQUIRED

- 10MM SOCKET
- 18MM SOCKET
- 21MM SOCKET
- 4MM HEX TOOL



HARDWARE KIT



INSTALLATION MANUAL

Begin by unpacking all items and inspecting them for damage or missing items. Any concerns, please contact the company you purchased the bumper from.

After inspection, remove your factory rear bumper.

Transfer your parking sensors to Attica Apex Series Rear Bumper using the **B55 bolts** | **N29 nuts** | **10mm Socket**.



Begin by placing your **threaded plate** as shown.

INSTALLATION MANUAL



Please Note: Some model's of the Wrangler JL have a threaded insert located where your **threaded plate** should go. If so, do not panic, just flip your threaded plate over and only fasten the outermost nut as shown above.



Once your **threaded plate(s)** are in position, proceed with inserting your rear bumper into place.

INSTALLATION MANUAL

After mounting your rear bumper, use **B56** bolts, **W36** lock washer and **W35** washer.

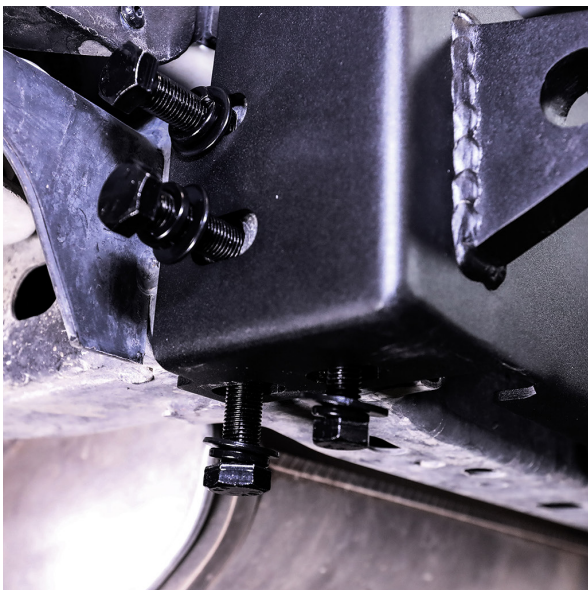


Once you are done hand-tightening the bolts on both sides of your rear bumper, it should mirror what is shown to the left.



INSTALLATION MANUAL

Use **B37** bolts, **W25** lock washer and **W27** washer into both under-sides of the bumper.

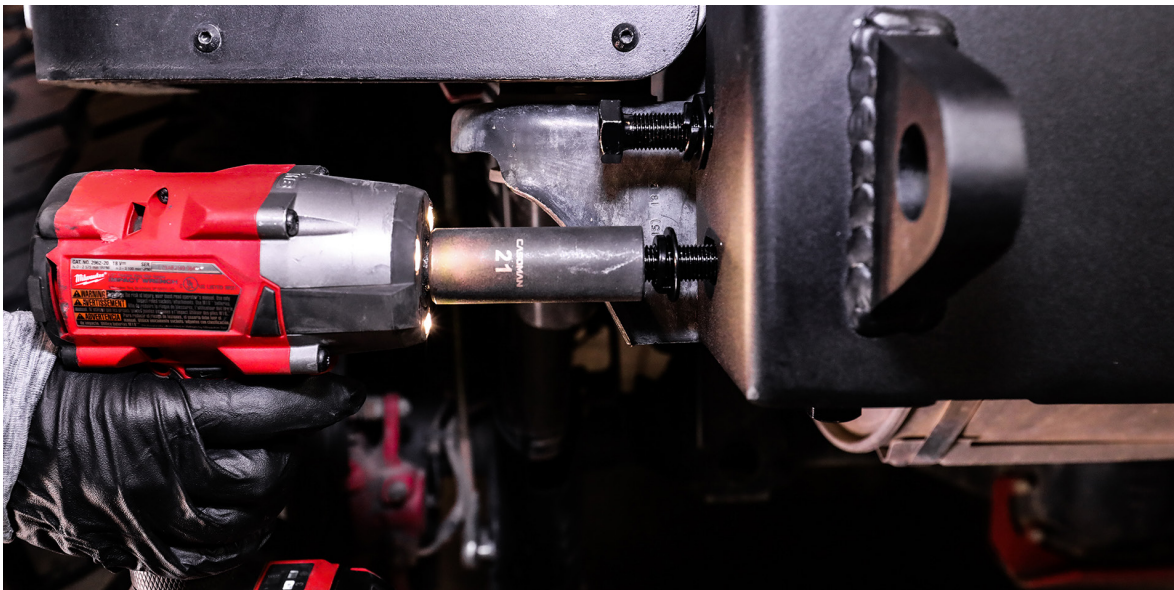


Please note: Some model's of the Wrangler JL have a threaded insert located where your **threaded plate** should go. If so you will need to proceed with using **B56** bolt, **W36** lock washer & **W35** washer in the same location where the threaded insert resides as shown on the right.

INSTALLATION MANUAL



After all your bolts are hand-tightened. Proceed with tightening the **B37** bolts on both sides of the rear bumper with your **18mm Socket** to help your lift bumper into position. Please note: Use your **21mm Socket** for bottom **B56** bolt if needed.



Once your **B37** bolts are tightened, continue with tightening the **B56** bolts on both sides of your rear bumper by using your **21mm Socket**.

INSTALLATION MANUAL

Finally, your **Attica Wrangler Apex Series Rear Bumper** is fully installed and ready to hit all forms of terrains.





IF YOU HAVE ANY QUESTIONS, PLEASE EMAIL US AT TECH@ATTICA4X4.COM OR CALL US AT 626-369-2121