

## 21-23 FORD BRONCO TERRA SERIES FRONT MODULAR WINGS ATTFB01A102-1-BX



### CAUTION BEFORE INSTALLING

**Before installation** - Read and understand all instructions, warnings, cautions, and notes contained in this installation instruction guide. Consult your vehicle owner's manual for proper disconnection of electrical and lifting of vehicle if required for installation of this product.

This install may require some technical skills and knowledge of basic mechanical work. If you do not feel that you are capable of performing this install please take this product to a trained professional.

After reading this guide please contact us with any questions or concerns before installing product.  
Customer Service: (626) 369-2121

**ATTICA4X4 is not responsible for any bodily injury or harm to you or your vehicle as a result of an improper install.**

Proper installation of this kit requires knowledge of the factory recommended procedures for removal and installation of original equipment components. We recommend that the factory shop manual and any special tools needed to service your vehicle be on hand during the installation. Installation of this kit without proper knowledge of the factory recommended procedures may affect the performance of these components and the safety of the vehicle.

- **Always wear eye protection when operating power tools.** •

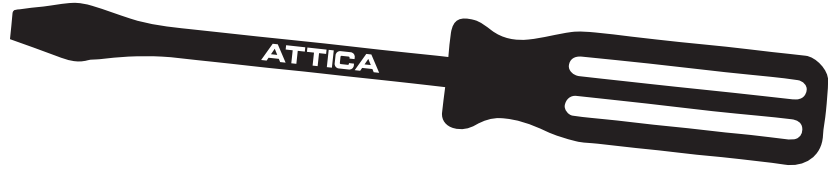
Inspect all contents of this package to make sure product is not damaged and all installation hardware has been included. If parts are missing from kit, please be prepared to provide the following information:

- Name of purchase location
- Date above Bar Code
- Bar Code on side of box
- Date inside box cover

# INSTALLATION **MANUAL**

## TOOLS REQUIRED

- 13MM SOCKET
- 13MM WRENCH



## HARDWARE KIT



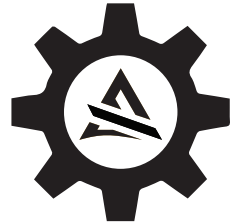
**X 8**  
N14 | HEX FLANGE NUT



**X 8**  
B20 | HEX HEAD BOLT



**X 8**  
W43 | WASHER



**X 1**  
SPARE PARTS HARDWARE KIT

# INSTALLATION MANUAL

Begin by unpacking all items and inspecting them for damage or missing items. Any concerns, please contact the company you purchased the front modular wings from.

After inspection, proceed by removing the bolts of your factory grille.





# INSTALLATION MANUAL



After removing the grille bolts, gently pull out a bit of the body panel to create enough space for removing the headlight bolts.



Locate and remove the three headlight bolts to take out your headlight.



# INSTALLATION MANUAL

The front modular wing lights connect to your headlight harness. Install the Attica inline headlight harness adapter.

Next, connect the front modular wing light to the inline headlight harness adapter.

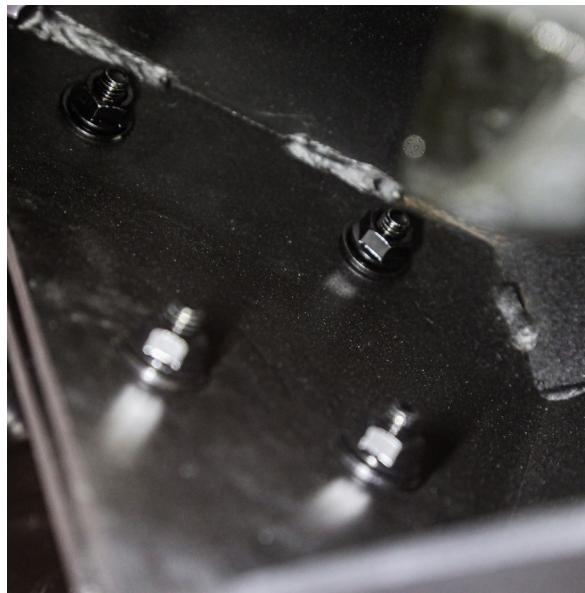


After reinstalling your headlights and grille, proceed to position the modular wing onto the bumper.



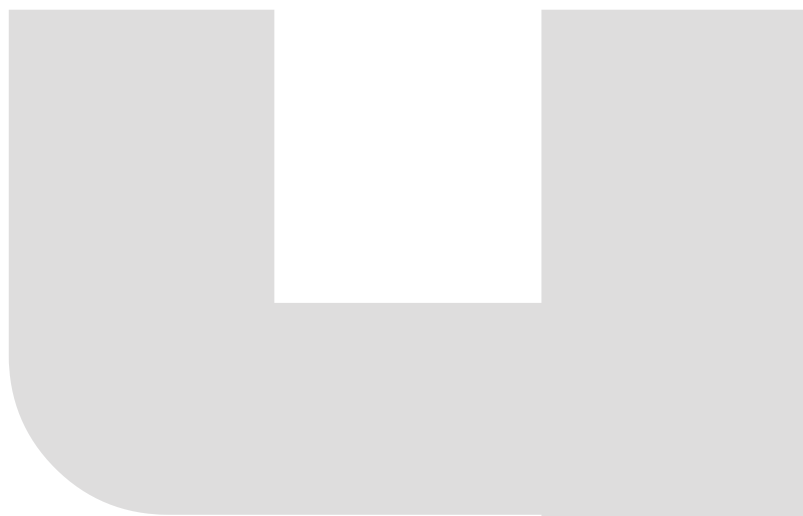
# INSTALLATION MANUAL

Install your modular wing by mounting the four mounting points using **N14** nuts and **W43** washers. Secure them in place by fastening the **B20** bolts using a **13mm socket & wrench**.



Connect your modular light to the adapter.

Once finished, your Attica Terra Series Front Modular Wings will be completely installed and ready to take to the outdoors!







IF YOU HAVE ANY QUESTIONS, PLEASE EMAIL US AT [TECH@ATTICA4X4.COM](mailto:TECH@ATTICA4X4.COM) OR CALL US AT  
626-369-2121