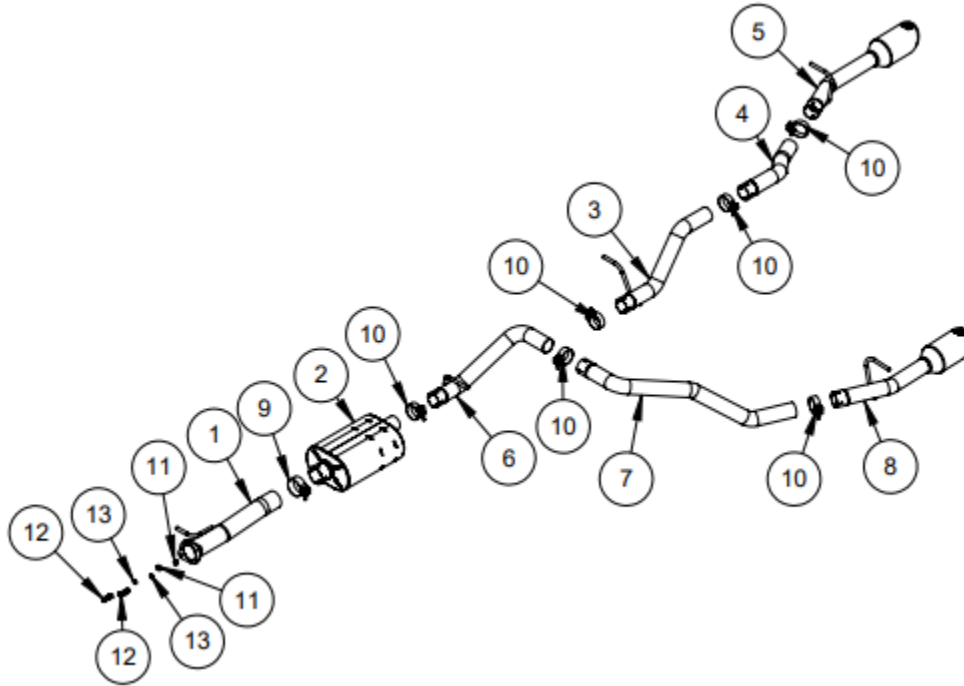




INSTALLATION INSTRUCTIONS:
 2019+ RAM 1500 CREW CAB, 5.5' BED
 CAT-BACK HOLESHOT EXHAUST
 PART # 19750, 49753

Congratulations, you have purchased the finest exhaust system available for your truck. Your Vance & Hines exhaust is designed and crafted for performance, quality, and style. Please follow the instructions below, check exhaust system for missing or damaged parts and if you need any assistance, please contact our technical support line (562) 921-7461.



ITEM #	PART #	DESCRIPTION	QTY
1	R165FB	FLANGE PIPE ASSEMBLY	1
2	R165RB	RAM MUFFLER ASSEMBLY	1
3	R170RB	RIGHT TAILPIPE A WELDED ASM	1
4	R172RB	RIGHT TAILPIPE B	1
5	R178RP-S Or R176RM	RIGHT TAILPIPE C WELDED ELIMINATOR BADGED RIGHT TAILPIPE C WELDED TWIN SLASH	1
6	R169RB	LEFT TAILPIPE A WELDED	1
7	R174RB	LEFT TAILPIPE B	1
8	R177RP-S Or R175RM	LEFT TAILPIPE C WELDED ELIMINATOR BADGED LEFT TAILPIPE C WELDED TWIN SLASH	1
9	A965HW	TORCA 3.50 IN DIA X 1.25 BAND	1
10	A982HW	TORCA 2.65 IN DIA X 1.00 BAND	6
11	A976HW	7/16 SPLIT LOCK WASHER	2
12	A977HW	7/16-20 HEX HEAD SCREW	2
13	A978HW	7/16-20 HEX NUT	2



INSTALLATION INSTRUCTIONS:
2019+ RAM 1500 CREW CAB, 5.5' BED
CAT-BACK HOLESHOT EXHAUST
PART # 19750, 49753

TOOLS REQUIRED:

- 3/8" OR 1/2" DRIVE RATCHET
- 3/8" DRIVE TORQUE WRENCH
- 6" RATCHET EXTENSION
- 16MM DEEP SOCKET
- 17MM SOCKET
- MUFFLER STANDS (OPTIONAL)
- SPRAY LUBRICANT (OPTIONAL)
- 11/16" DEEP SOCKET
- 5/8" SOCKET
- 11/16" COMBO WRENCH
- 5/8" COMBO WRENCH

STOCK EXHAUST REMOVAL:

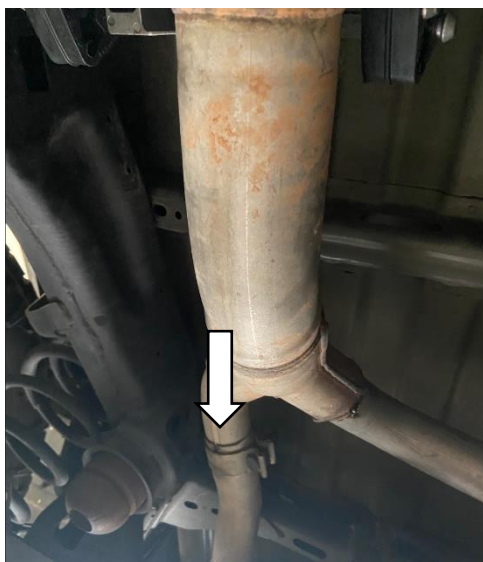
STEP 1:

LOOSEN THE FACTORY EXHAUST CLAMP FOR EACH EXHAUST TIP AND REMOVE



STEP 2:

LOOSEN THE CLAMP FROM THE PASSENGER SIDE TAILPIPE AND REMOVE FROM VEHICLE.



STEP 3:

REMOVE THE TWO BOLTS ON THE REAR OEM EXHAUST FLANGE AND DISCONNECT GROUND STRAP.
REMOVE RUBBER ISOLATOR.



STEP 4:

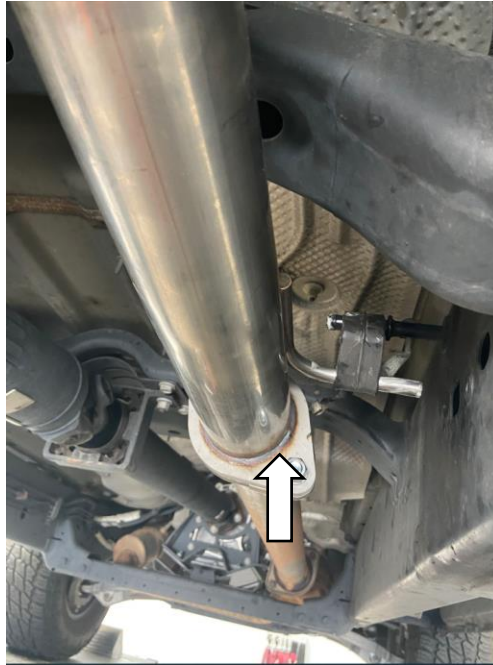
REMOVE THE MUFFLER FROM THE TWO RUBBER ISOLATORS AND THEN REMOVE MUFFLER ASSEMBLY FROM THE TRUCK. NOTE: TO CLEAR THE REAR AXLE YOU WILL HAVE TO RAISE THE BODY FROM THE DRIVE TRAIN OR CUT THE STOCK TAILPIPE.



EXHAUST INSTALLATION:

STEP 1:

INSERT THE FLANGE PIPE ASSEMBLY INTO THE RUBBER ISOLATOR AND ATTACHED TO OEM FLANGE WITH PROVIDED HARDWARE. NOTE: MAY NEED TO LOOSEN FORWARD BALL FLANGE TO AID IN ALIGNMENT.



STEP 2:

SLIP A CLAMP ON THE FLANGE PIPE AND THEN INSTALL THE MUFFLER. SUPPORT THE MUFFLER WITH A STAND. SNUG CLAMP BUT LEAVE LOOSE FOR ADJUSTMENTS LATER. POSITION MUFFLER WITH LOGO FACE DOWN.



STEP 3:

SLIDE CLAMPS ONTO EACH TAILPIPE A, INSERT EACH TAILPIPE ONTO THE MUFFLER AND THEN INTO THE RUBBER ISOLATOR. THE RIGHT TAILPIPE CONNECTS TO THE LOWER MUFFLER OUTLET. SNUG THE CLAMPS BUT LEAVE LOOSE FOR ADJUSTMENTS LATER. NOTE: ADJUST MUFFLER AND TAILPIPE A'S SO THAT THE HANGER BRACKETS ARE LEVEL TO AID IN ALIGNMENT.



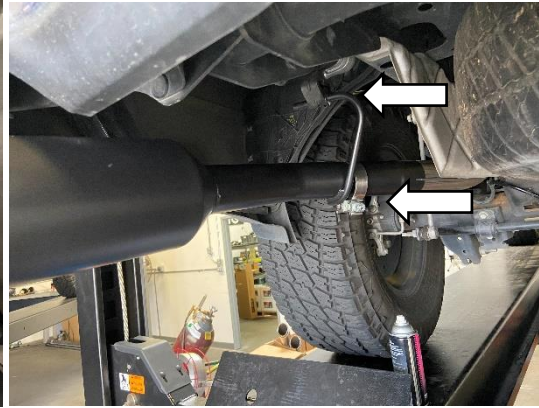
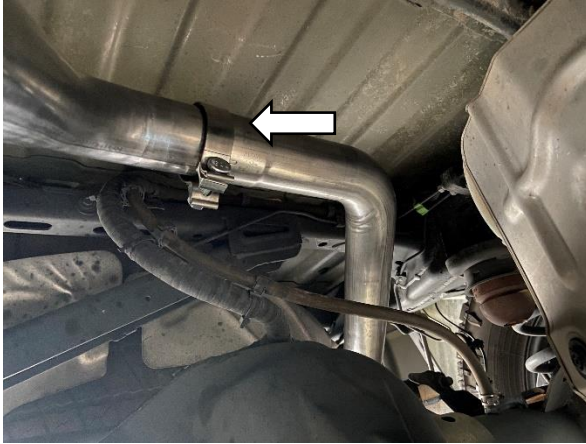
STEP 4:

SLIDE A CLAMP ONTO THE RIGHT TAILPIPE B AND INSTALL ONTO THE TAILPIPE A. THEN SLIDE A CLAMP ONTO THE RIGHT TAILPIPE C AND INSTALL ONTO THE TAILPIPE B AND INTO THE OEM RUBBER ISOLATOR. SNUG THE CLAMPS BUT LEAVE LOOSE FOR ADJUSTMENTS LATER.



STEP 5:

SLIDE A CLAMP ONTO THE LEFT TAILPIPE B AND INSTALL ONTO THE TAILPIPE A. THEN SLIDE A CLAMP ONTO THE LEFT TAILPIPE C AND INSTALL ONTO THE TAILPIPE B AND INTO THE OEM RUBBER ISOLATOR. SNUG THE CLAMPS BUT LEAVE LOOSE FOR ADJUSTMENTS LATER.



STEP 6:

ADJUST THE EXHAUST FOR PROPER ALIGNMENT. TIGHTEN BOLTS AND CLAMPS STARTING AT THE FRONT.

1. TORQUE FLANGE BOLTS
2. SNUG TORCA CLAMPS
3. CHECK TIP ALIGNMENT AND ADJUST AS NECESSARY
4. TORQUE TORCA CLAMPS

BOLT TORQUE:

TORCA BAND CLAMPS: 43 FT/LBS

FLANGE BOLTS: 25 FT/LBS

WHEN INSTALLING A NEW EXHAUST SYSTEM, MAKE SURE YOUR HANDS ARE CLEAN AND FREE OF OIL. AFTER INSTALLATION, THOROUGHLY CLEAN PIPES WITH WARM SOAPY WATER AND A SOFT CLOTH. DRY WITH A CLEAN TOWEL TO REMOVE ANY RESIDUE BEFORE STARTING THE TRUCK. DO NOT USE ANYTHING ABRASIVE TO CLEAN THE PIPES.