



## 4" Round Nerf Bar

Part No. A8005S/TI



Fits: 2002-2008

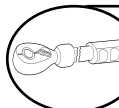
Dodge Ram 1500 Quad Cab



REMOVE CONTENTS FROM BOX. VERIFY ALL PARTS ARE PRESENT.



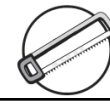
READ INSTRUCTIONS CAREFULLY BEFORE STARTING INSTALLATION.



DO NOT OVER TORQUE. STANDARD OPERATING LOAD FOR TIGHTEN BODY MOUNT NUTS & BOLTS VARIES FROM 45 TO 65 FOOT POUND.



60-180 min



Cutting Required



Drilling Not Required



[support@trailfx.com](mailto:support@trailfx.com)



1 866 638 4870



POLISHED STAINLESS STEEL – LIMITED LIFETIME  
POWDER COATED BLACK – 3 YEARS

### PARTS LIST:

Qty	Part Description	Qty	Part Description
2	SIDE TUBES WITH STEPS	2	3/8" x 1 1/4" HEX HEAD BOLT WITH METAL STRAP
2	FRONT MOUNT BRACKETS	4	1/2" x 1.88 x 3/16" SPACER
2	REAR MOUNT BRACKETS	8	1/2" FLAT WASHER (BIG)
2	FRONT BRACE BRACKETS (02-05 1500 SERIES)	8	1/2" LOCK WASHER
2	FRONT BRACE BRACKETS (02-05 2500/3500 SERIES)	6	3/8" FLAT WASHERS
2	FRONT BRACE BRACKETS (06 1500/2500/3500 SERIES, longest one)	4	3/8" HEX NUTS
4	M12 – 1.75 x 120mm HEX HEAD BOLT	4	3/8" LOCK WASHERS
4	1/2" – 13 x 2" HEX HEAD BOLT	4	1/2" FLAT WASHER
2	3/8" x 1 1/4" HEX HEAD BOLT	4	1/2" HEX NUTS

- Begin installation by working on driver side of the vehicle (refer to Figures 1. 1- 1.5)
- From underneath truck, loosen and remove body mount bolts that run upward through mounts into floorboard. Attach and secure Front Mount Bracket to underside of vehicles front body mount (see Figure 1.3), re-using isolator, but replacing factory bolt with (1) M12 – 1.75 x 120mm bolt, (1) 1/2" split lock washer, and (1) 1/2" flat washer. Also, Place (1) 1/2" x 1.88 x 3/16" spacer between the Mount Bracket and the isolator. Hand Tighten.
- Attach and secure Rear Mount Bracket to underside of vehicles rear body mount in same manner as the front.  
**For 02-05 1500 Series Ram**
- Discard 2500/3500 Front Brace Bracket (see Figure 1.2). Place (1) 3/8" x 1 1/2" bolt with welded strap and (1) 1/2" flat washer through cut out in frame rail (see Figure 1.4). Line up slot on the long arm of the Brace Bracket with this bolt and secure using (1) 3/8" flat washer and (1) 3/8"hex nut,(1) lock washer Hand Tighten.  
**Note:** The slot on the short arm of the Brace Bracket should now align with the Mount Bracket slot.  
**For 02-05 2500 and 3500 Series Ram**
- Discard 1500 Front Brace Bracket (see Figure 1.1). Attach Front Brace Bracket to side of Front Mount Bracket using (1) 3/8" x 1 1/4" bolt, (2) 3/8" flat washers, and (1) 3/8" hex nut ,(1) lock washer (see Figure 1.5). Place (1) 3/8" x 1 1/2" bolt with welded strap and (1) 1/2" flat washer through cut out in frame rail. Line up slot on the long arm of the Brace Bracket with this bolt and secure using (1) 3/8" flat washer and (1) 3/8" lock nut,(1) lock washer. Hand tighten.  
**For 06 1500/2500/3500 Series Ram**

6. Using 06 1500/2500/3500 Brace Bracket (See Figure 1.6). (1). Attach Front Brace Bracket to side of Front Mount Bracket using (1) 3/8" x 1 1/4" bolt, (2) 3/8" flat washers, and (1) 3/8" hex nut ,(1) lock washer (see Figure 1.5). Place (1) 3/8" x 1 1/2" bolt with welded strap and (1) 1/2" flat washer through cut out in frame rail. Line up slot on the long arm of the Brace Bracket with this bolt and secure using (1) 3/8" flat washer and (1) 3/8" lock nut,(1) lock washer. Hand tighten.
7. Attach Side Tube to Front and Rear Brackets using (1) 1/2" - 13 x 2" bolt, (1) 1/2" split lock washer and (1) 1/2" flat washer for each bracket, and hand tighten. Torque M12 bolts first to 65 ft-lbs and then tighten all remaining fasteners to complete the driver-side assembly.
8. Repeat process for passenger side of vehicle to complete installation.



Figure 1.1 – 02-05 1500 Front Brace



Figure 1.2 –02-05 2500/3500 Front Brace



Figure 1.6- 06 1500/2500/3500 Front Brace

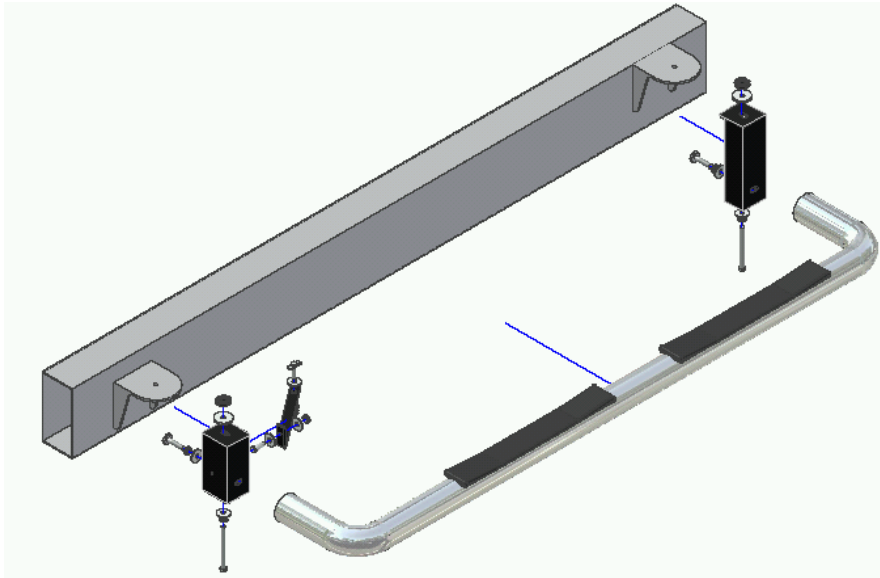


Figure 1.3 –Driver-Side Front Assembly View (2500/3500 Series set-up shown)

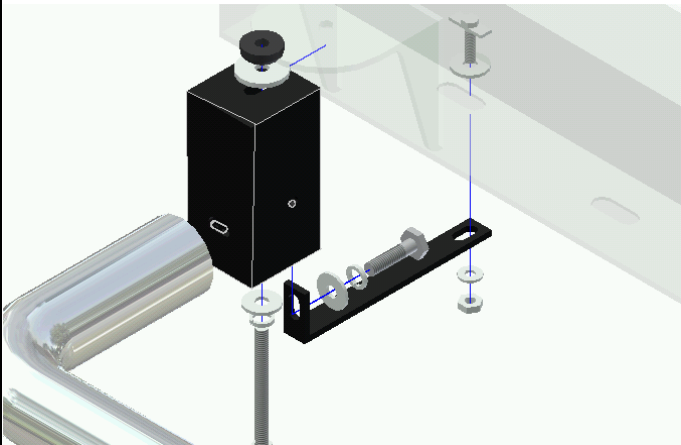


Figure 1.4 – 1500 Front Mount Assembly

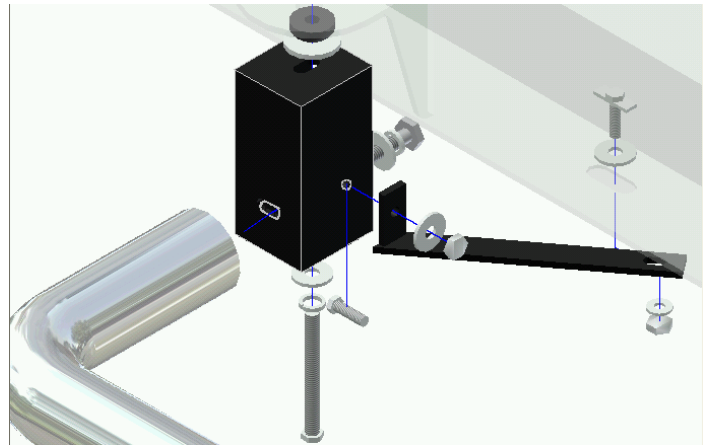
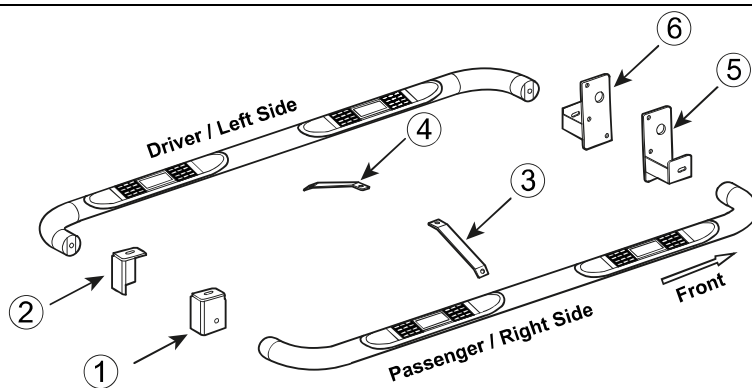


Figure 1.5 – 2500/3500 Front Mount Assembly

**PARTS IDENTIFICATION GUIDE**

**Driver Side tube packed using "Green" color foam sheet. Passenger Side tube packed using "White" color foam sheet**

No.	Parts Identification
1	Passenger / Right 'Rear' Bracket marked "PR"
2	Driver / Left 'Rear' Bracket marked "DR"
3	Passenger / Right 'Center' Bracket marked "PC"
4	Driver / Left 'Center' Bracket marked "DC"
5	Passenger / Right 'Front' Bracket marked "PF"
6	Driver / Left 'Front' Bracket marked "DF"

**Note:**

- This guide is to identify the parts and not a reference for part count.
- For part count, refer Parts List.
- Product / Bracket image is representative and actual design may vary.

**PRODUCT CARE**

- Periodically check the product to ensure all fasteners are tight and components are intact.
- Regular waxing is recommended to protect the finish of the product.
- **Use ONLY Non-Abrasive automotive wax.** Use of any soap, polish or wax that contains an abrasive is detrimental and can scratch the finish leading to corrosion.
- Aluminum polish may be used to polish small scratches and scuffs for **Stainless Steel finish.**
- Mild soap may be used to clean the product for both **Stainless Steel and Black finish.**

**FAQ's****1. Hardware's are not of correct size.**

*In GMC / Chevrolet truck model 2006 & up, customer needs to reuse the factory body bolts to install the bracket. If your vehicle is not GMC / Chevrolet 2006 & up, ensure that holes are not partially covered with any plastic grommet or rust? If it is, remove the plastic grommet & rust from the thread holes & re-try the installation.*

**2. Mounting Bracket are not getting Installed properly.**

*In some cases Illustration images shown in Installation manual may not be the exactly same as per actual vehicle images ,also if Driver / Passenger side mounting brackets are very identical in the design, suggest referring Parts Identification guide to avoid fitment issue.*

**3. Products are thumping / rattling after installation.**

*Ensure that all required mounting brackets / hardware's are installed & tighten correctly. Suggest using white lithium / regular grease between the metal to metal contact surfaces.*

**4. Side Bar is not aligning with vehicle / Step Pads are not aligning with vehicle doors.**

*Side bar may be interchanged or mounting brackets are not installed at the correct position in the vehicle. Refer Parts identification guide.*

**5. Missing / Excess Hardware.**

*Recheck hardware count as per the part list.*

**6. Product not installing properly.**

*Ensure make model year, cab length and bed size of your vehicle is listed in the application. All installation steps are followed correctly.*

**Check out these other TrailFX Products!!**

**www.TrailFX.com**



**BULL BAR**



**GRILLE GUARDS**



**BED RAILS**



**RUNNING BOARDS**

Keystone Automotive Operations Inc. (KAO) warrants this product to be free of defects in material and workmanship at the time of purchase by the original retail consumer. KAO disclaims any other warranties, express or implied, including the warranty of fitness for a particular purpose or an intended use. If the product is found to be defective, KAO may replace or repair the product at our option, when the product is returned prepaid, with proof of purchase. Alteration to, improper installation, or misuse of this product voids the warranty. KAO's liability is limited to repair or replacement of products found to be defective, and specifically excludes liability for any incidental or consequential loss or damage.