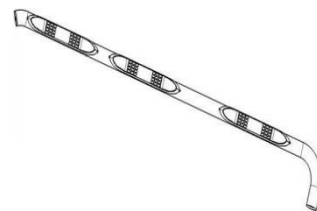




3" W2W Nerf Bar

Part No. A3008S/B



Fits: 2002 - 2008 Dodge Ram1500

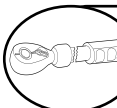
2003 - 2008 Dodge Ram 2500/3500 Quad Cab with 8ft Long Bed Excluding Dual Rear Wheel)



REMOVE CONTENTS FROM BOX. VERIFY ALL PARTS ARE PRESENT.



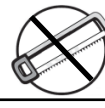
READ INSTRUCTIONS CAREFULLY BEFORE STARTING INSTALLATION.



DO NOT OVER TORQUE. STANDARD OPERATING LOAD FOR TIGHTEN BODY MOUNT NUTS & BOLTS VARIES FROM 45 TO 65 FOOT POUND.



60-180 min



Cutting Not
Required



Drilling Not
Required



support@trailfx.com



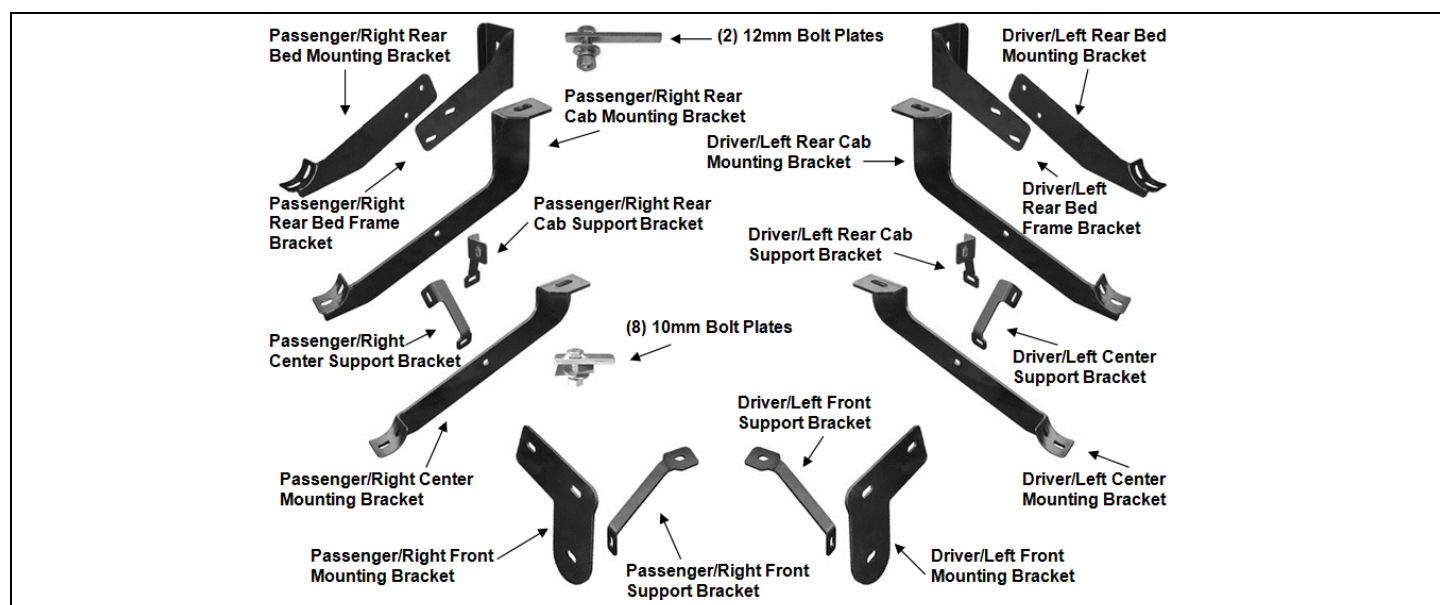
1 866 638 4870



POLISHED STAINLESS STEEL – LIMITED LIFETIME
POWDER COATED BLACK – 3 YEARS

PARTS LIST:

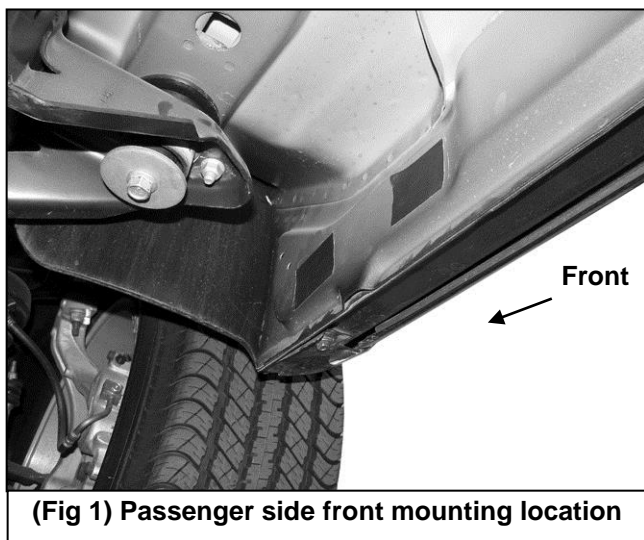
Qty	Part Description	Qty	Part Description
1	Driver/Left Sidebar	2	12mm Large Bolt Plates
1	Passenger/Right Sidebar	2	12mm Plastic Retainers
2	Flat Front Mounting Brackets	8	10-1.50mm x 30mm Bolts Plates
1	Driver/Left Front Support Bracket	8	10mm Plastic Retainers
1	Passenger/Right Front Support Bracket	2	1/2" x 2" Hex Bolts
1	Driver/Left Center Mounting Bracket	2	1/2" ID x 1 1/2" OD x 3mm Flat Washers
1	Passenger/Right Center Mounting Bracket	2	1/2" Lock Washers
1	Driver/Left Center Support Bracket	6	12-1.75mm x 120mm Gr.10.9 Hex Bolts
1	Passenger/Right Center Support Bracket	14	12mm x 32mm x 3mm Flat Washers
1	Driver/Left Rear Cab Mounting Bracket	8	12mm Lock Washers
1	Passenger/Right Rear Cab Mounting Bracket	8	10mm x 27mm OD x 3mm Flat Washers
1	Driver/Left Rear Cab Support Bracket	8	10mm Lock Washers
1	Passenger/Right Rear Cab Support Bracket	8	10mm Hex Nuts
1	Driver/Left Bed Frame Bracket	8	8-1.25mm x 30mm Hex Bolts
1	Passenger/Right Bed Frame Bracket	12	8-1.25mm x 25mm Hex Bolts
1	Driver/Left Bed Sidebar Bracket	28	8mm x 24mm OD x 2mm Flat Washers
1	Passenger/Right Bed Sidebar Bracket	20	8mm Lock Washers
		8	8mm Hex Nuts



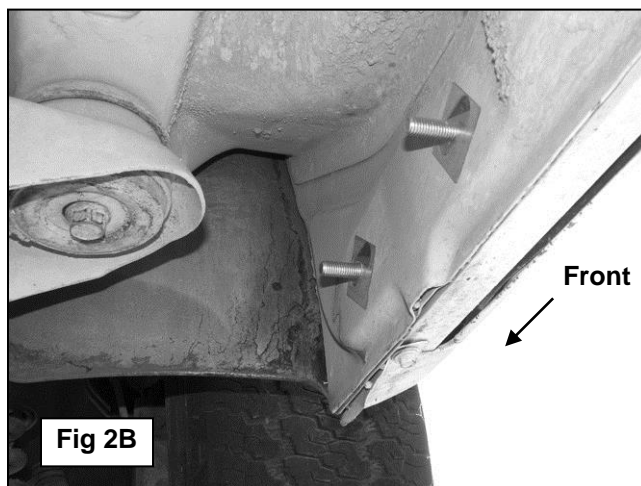
IMPORTANT! Depending on model year, (typically 2002-04), the factory body mount bolt may be too short for proper Bracket installation and/or the factory flat washer may not be removable. If necessary, replace the factory body mount bolts and washers with the supplied 12mm x 120mm Hex Bolts, 12mm Flat Washers and 12mm Lock Washers. See Page 4, **(Figure 5)**, for an example. It is the installer's responsibility to determine the correct hardware for proper installation.

INSTALLATION PROCEDURE

1. Starting at the passenger side-front of the vehicle, remove any sealing tape covering the (2) factory oval holes on the side of the inner panel closest to the tire opening, **(Figure 1)**.

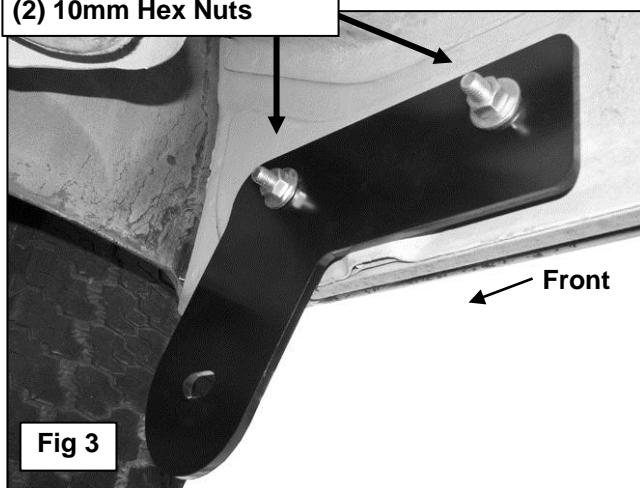


2. Select (1) 10mm Bolt Plate and (1) 10mm Plastic Retainer, **(Figure 2A)**. Partially thread the Plastic Retainer onto the Bolt Plate. Insert the Bolt Plate into the forward oval hole, **(Figure 2B)**. Once the Bolt Plate is inserted, hold the threaded end and tighten the Plastic Retainer until it is against the body panel. **IMPORTANT:** The Plastic Retainer is designed to prevent the Bolt Plate from falling into the body panel and to aid Mounting Bracket installation.
3. Repeat **Step 2** to install a 10mm Bolt Plate in the second oval hole, **(Figure 2B)**.

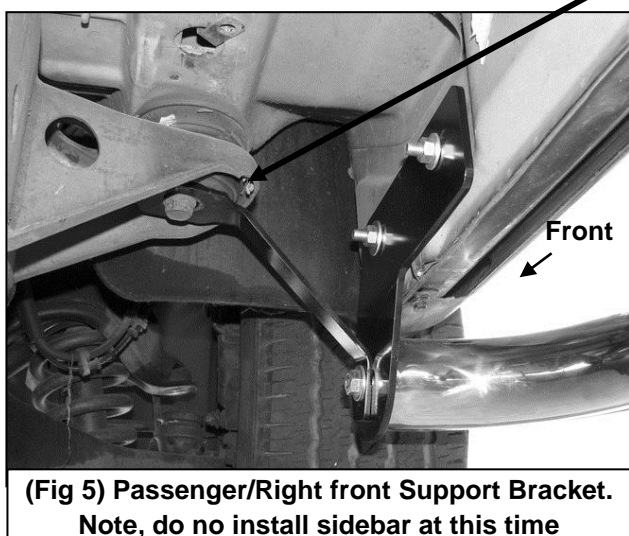
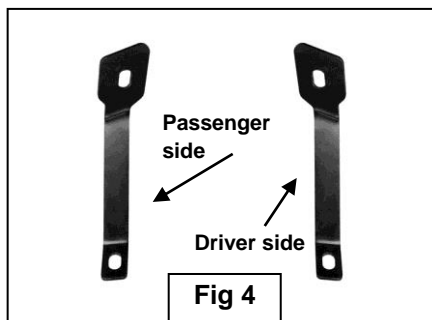


4. Select (1) front Flat Mounting Bracket. Position the Mounting Bracket over the (2) Bolt Plates, **(Figure 3)**. Secure the Bracket to the Bolt Plates with (2) 10mm Flat Washers, (2) 10mm Lock Washers and (2) 10mm Hex Nuts. Do not tighten hardware at this time.

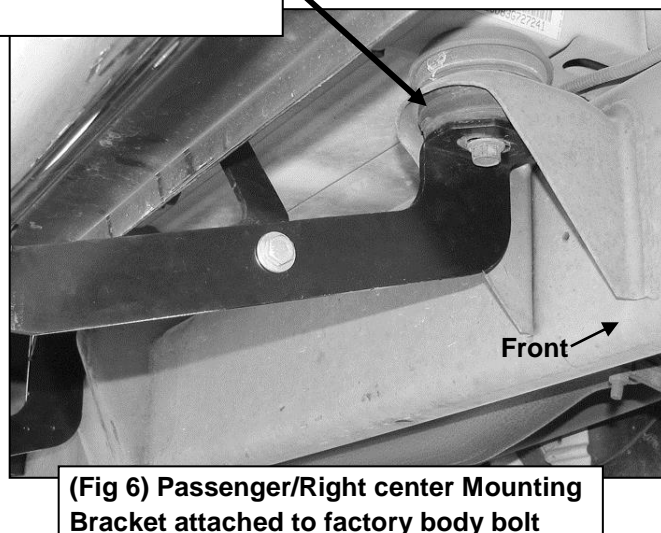
(2) 10mm Flat Washers
(2) 10mm Lock Washers
(2) 10mm Hex Nuts



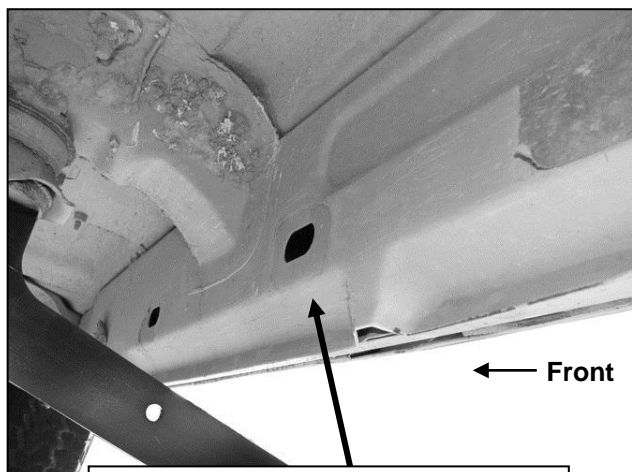
5. Next, select the passenger side front Support Bracket, **(Figure 4)**. Remove the long factory hex bolt from the front body mount, **(Figure 5)**. Hang the Bracket from the body mount with the factory body mount bolt. Snug but do not tighten hardware at this time.
6. Move to the center mounting location in the middle of the cab, **(Figure 6)**. Select the passenger side Center Mounting Bracket. Attach the Bracket to the body mount as described in **Step 5**.



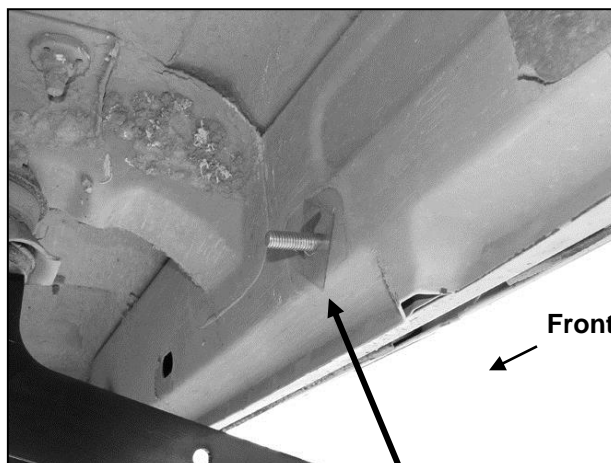
Use the factory body
bolt or replace with:
12mm x 120mm Hex Bolt
12mm Lock Washer and
12mm Flat Washer



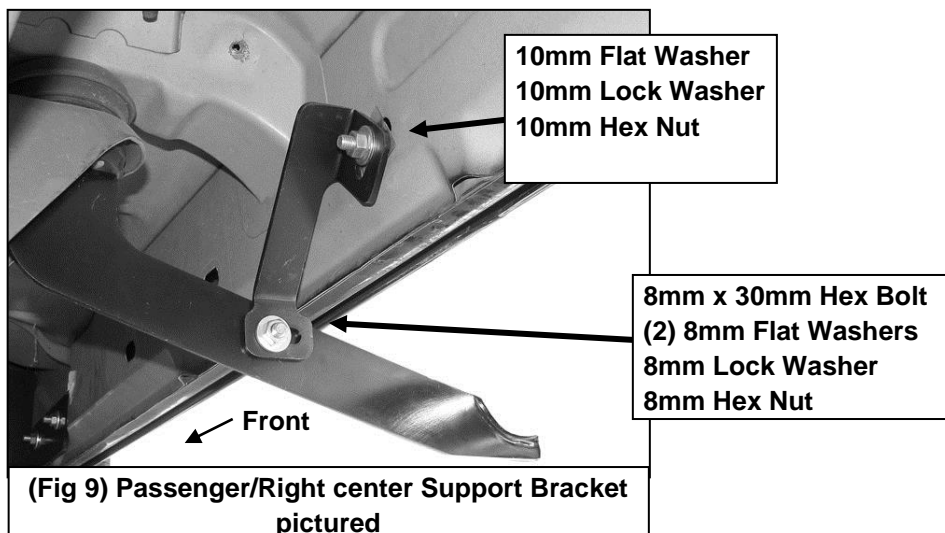
7. Remove the tape covering the factory hole in the side of the body panel, **(Figure 7)**. Insert (1) 10mm Bolt Plate and Retainer into the factory hole as previously described in **Step 2, (Figures 2A & 8)**. Select the passenger side center Support Bracket. Attach the larger bent end of the Bracket to the Bolt Plate with (1) 10mm Flat Washer, (1) 10mm Lock Washer and (1) 10mm Hex Nut, **(Figure 9)**. Leave loose. Line up the lower end of the Support Bracket with the hole in the Center Mounting Bracket. Bolt the Support Bracket to the back of the Center Bracket with (1) 8mm x 30mm Hex Bolt, (2) 8mm Flat Washers, (1) 8mm Lock Washer and (1) 8mm Hex Nut, **(Figure 9)**. Do not fully tighten hardware.



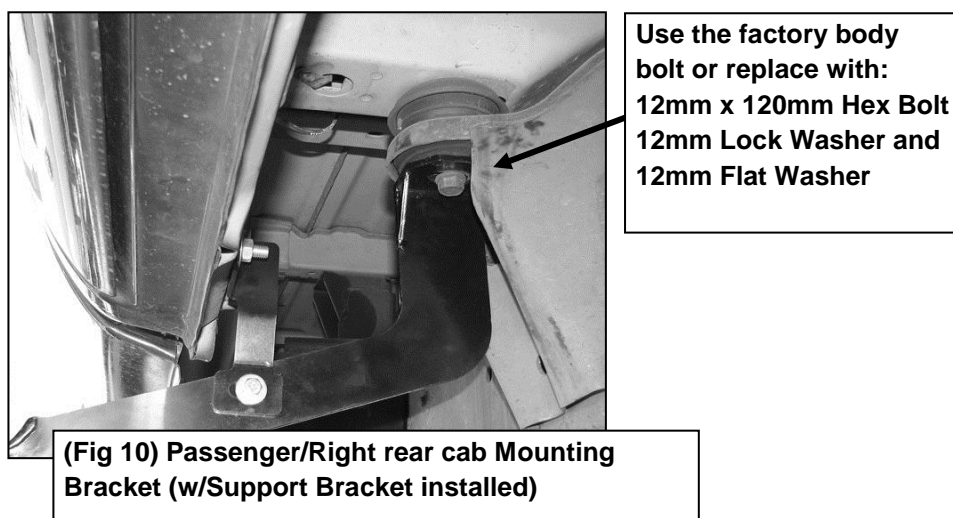
(Fig 7) Passenger/Right center Support Bracket mounting location



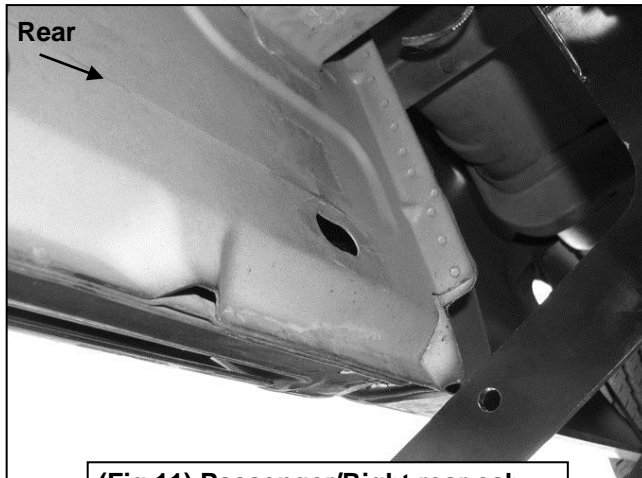
(Fig 8) 10mm Bolt Plate w/Plastic Retainer-see Figure 2A



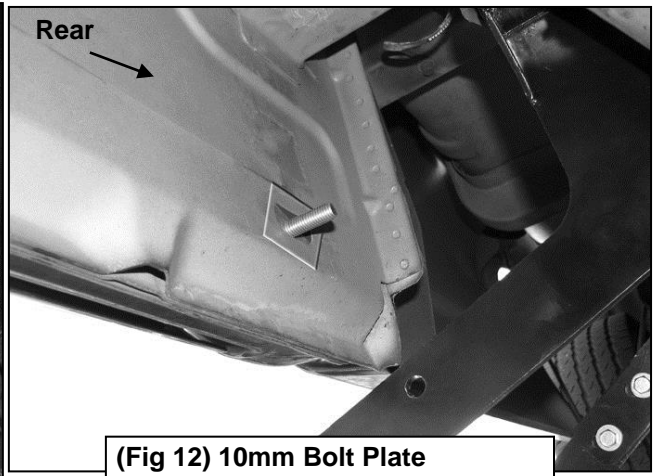
8. Repeat **Steps 5 & 6** to attach the passenger side rear cab Mounting Bracket to the rear body mount bolt. Leave hardware loose at this time, **(Figure 10)**.



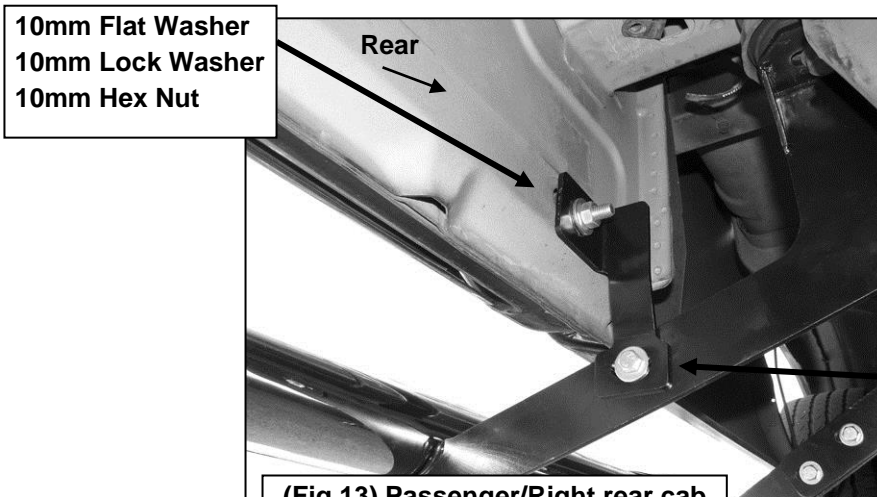
9. Locate the last oval mounting hole along the inner body panel above the rear cab Mounting Bracket, **(Figure 11)**. Insert (1) 10mm Bolt Plate with (1) 10mm Plastic Retainer as described in **Steps 2 & 7, (Figures 2A & 12)**. Attach the 90-degree bent end of the passenger side rear Support Bracket to the Bolt Plate with (1) 10mm Flat Washer, (1) 10mm Lock Washer and (1) 10mm Hex Nut, **(Figure 13)**. Bolt the flat lower end of the Support Bracket to the front of the rear Bracket with (1) 8mm x 30mm Hex Bolt, (2) 8mm Flat Washers, (1) 8mm Lock Washer and (1) 8mm Hex Nut, **(Figure 13)**. Snug but do not fully tighten hardware at this time.



(Fig 11) Passenger/Right rear cab Support Bracket mounting location

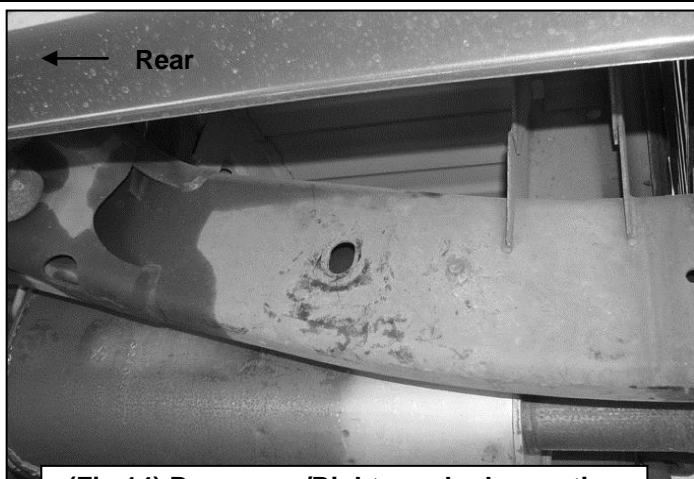


(Fig 12) 10mm Bolt Plate w/Plastic Retainer-see Figure 2A

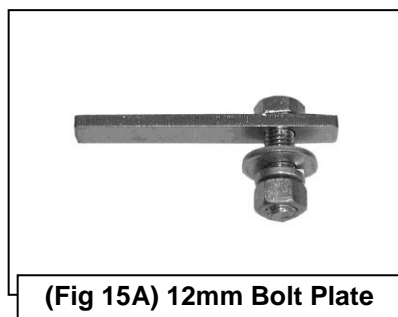


(Fig 13) Passenger/Right rear cab Support Bracket pictured

10. Next, move along the vehicle toward the passenger side rear tire opening. Locate the factory oval hole in the side of the frame channel in front of the rear tire, **(Figure 14)**. Select (1) 12mm Large Bolt Plate and (1) 12mm Plastic Retainer, **(Figure 15A)**. Insert the Bolt Plate and Retainer into the oval hole as described in **Steps 2 & 7, (Figure 15B)**. Select the passenger side Rear Bed Frame Bracket, **(Figure 16)**. Attach the Frame Bracket to the Bolt Plate with (1) 12mm Flat Washer, (1) 12mm Lock Washer and (1) 12mm Hex Nut. Leave hardware loose at this time.



**(Fig 14) Passenger/Right rear bed mounting
Bracket location on frame channel**



(Fig 15A) 12mm Bolt Plate

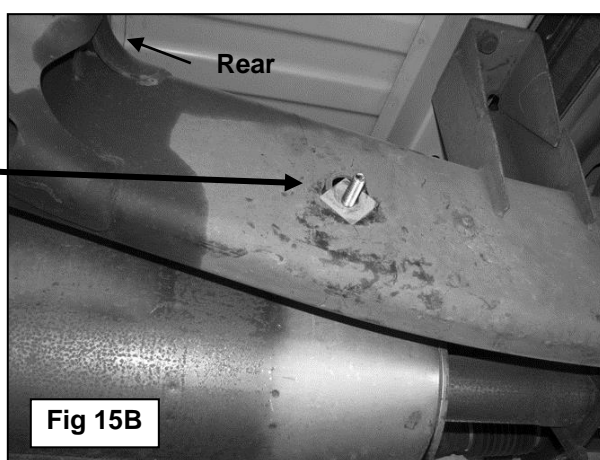
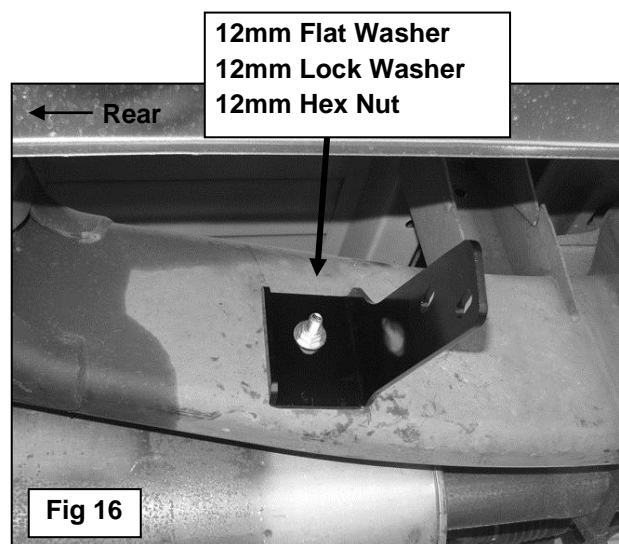


Fig 15B

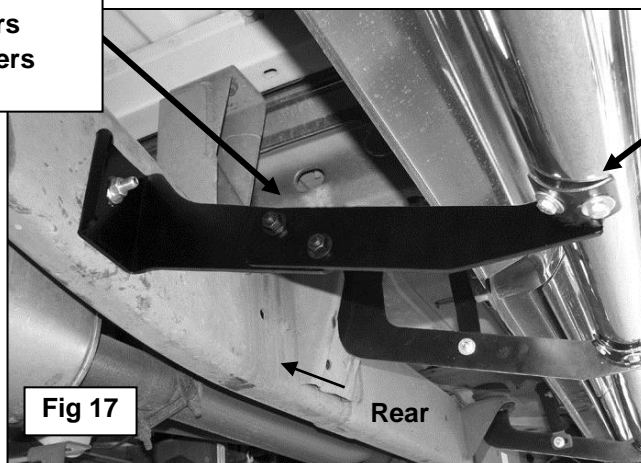


**12mm Flat Washer
12mm Lock Washer
12mm Hex Nut**

Fig 16

11. Next, select the passenger Bed Mounting Bracket. Bolt the Mounting Bracket to the back of the Frame Bracket with (2) 8mm x 30mm Hex Bolts, (4) 8mm Flat Washers, (2) 8mm Lock Washers and (2) 8mm Hex Nuts, **(Figure 17)**. Do not tighten hardware at this time.
12. Once all (4) of the passenger side Brackets have been installed, with assistance, carefully position the driver Sidebar up to the front Bracket and onto the (3) Mounting Brackets. Attach the Sidebar to the front bracket with the included (1) 1/2" x 2" Hex Bolt, (1) 1/2" Lock Washer and (1) 1/2" Flat Washer, **(Figure 18)**. Bolt the Sidebar to the (3) cradles on the Mounting Brackets with the included (6) 8mm x 25mm Hex Bolts, (6) 8mm Lock Washers, and (6) 8mm Flat Washers, **(Figure 17)**. Do not tighten hardware.

(2) 8mm x 30mm Hex Bolts
(4) 8mm Flat Washers
(2) 8mm Lock Washers
(2) 8mm Hex Nuts



8mm x 25mm Hex Bolts
8mm Flat Washers
8mm Lock Washers

Fig 17

Rear

1/2" x 2" Hex Bolt
1/2" Lock Washer
1/2" Flat Washer

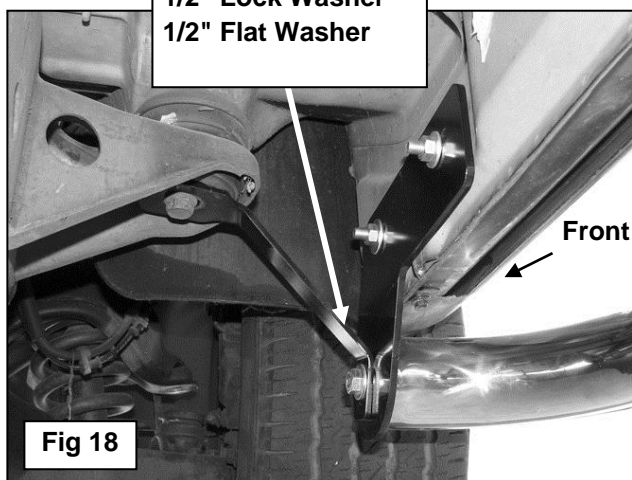


Fig 18

Front

13. Properly level and adjust the Sidebar and tighten all hardware at this time.
14. Repeat **Steps 2 — 13** for driver Sidebar installation.



Installation Complete

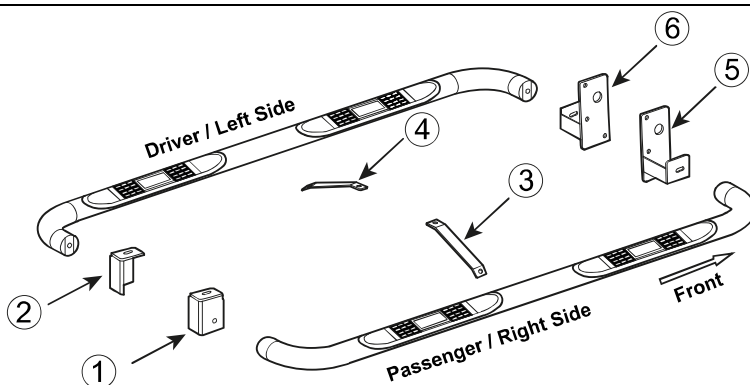
PARTS IDENTIFICATION GUIDE

Driver Side tube packed using "Green" color foam sheet. Passenger Side tube packed using "White" color foam sheet

No.	Parts Identification
1	Passenger / Right 'Rear' Bracket marked "PR"
2	Driver / Left 'Rear' Bracket marked "DR"
3	Passenger / Right 'Center' Bracket marked "PC"
4	Driver / Left 'Center' Bracket marked "DC"
5	Passenger / Right 'Front' Bracket marked "PF"
6	Driver / Left 'Front' Bracket marked "DF"

Note:

- This guide is to identify the parts and not a reference for part count.
- For part count, refer Parts List.
- Product / Bracket image is representative and actual design may vary.

**PRODUCT CARE**

- Periodically check the product to ensure all fasteners are tight and components are intact.
- Regular waxing is recommended to protect the finish of the product.
- **Use ONLY Non-Abrasive automotive wax.** Use of any soap, polish or wax that contains an abrasive is detrimental and can scratch the finish leading to corrosion.
- Aluminum polish may be used to polish small scratches and scuffs for **Stainless Steel finish.**
- Mild soap may be used to clean the product for both **Stainless Steel and Black finish.**

FAQ's**1. Hardware's are not of correct size.**

In GMC / Chevrolet truck model 2006 & up, customer needs to reuse the factory body bolts to install the bracket. If your vehicle is not GMC / Chevrolet 2006 & up, ensure that holes are not partially covered with any plastic grommet or rust? If it is, remove the plastic grommet & rust from the thread holes & re-try the installation.

2. Mounting Bracket are not getting Installed properly.

In some cases Illustration images shown in Installation manual may not be the exactly same as per actual vehicle images ,also if Driver / Passenger side mounting brackets are very identical in the design, suggest referring Parts Identification guide to avoid fitment issue.

3. Products are thumping / rattling after installation.

Ensure that all required mounting brackets / hardware's are installed & tighten correctly. Suggest using white lithium / regular grease between the metal to metal contact surfaces.

4. Side Bar is not aligning with vehicle / Step Pads are not aligning with vehicle doors.

Side bar may be interchanged or mounting brackets are not installed at the correct position in the vehicle. Refer Parts identification guide.

5. Missing / Excess Hardware.

Recheck hardware count as per the part list.

6. Product not installing properly.

Ensure make model year, cab length and bed size of your vehicle is listed in the application. All installation steps are followed correctly.

Check out these other TrailFX Products!!

www.TrailFX.com

**BULL BAR****GRILLE GUARDS****BED RAILS****RUNNING BOARDS**

Keystone Automotive Operations Inc. (KAO) warrants this product to be free of defects in material and workmanship at the time of purchase by the original retail consumer. KAO disclaims any other warranties, express or implied, including the warranty of fitness for a particular purpose or an intended use. If the product is found to be defective, KAO may replace or repair the product at our option, when the product is returned prepaid, with proof of purchase. Alteration to, improper installation, or misuse of this product voids the warranty. KAO's liability is limited to repair or replacement of products found to be defective, and specifically excludes liability for any incidental or consequential loss or damage.