



4" Oval Straight Side Bar

Part No. A1521S /B



Fits: 2004-2009

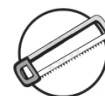
HYUNDAI TUCSON

2004-2009

KIA SPORTAGE



60-180 min



Cutting
Required



Drilling Not
Required



REMOVE CONTENTS FROM BOX. VERIFY ALL PARTS ARE PRESENT.



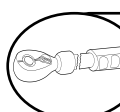
support@trailfx.com



READ INSTRUCTIONS CAREFULLY BEFORE STARTING INSTALLATION.



1 866 638 4870



DO NOT OVER TORQUE. STANDARD OPERATING LOAD FOR TIGHTEN BODY MOUNT NUTS & BOLTS VARIES FROM 45 TO 65 FOOT POUND.



POLISHED STAINLESS STEEL – LIMITED LIFETIME
POWDER COATED BLACK – 3 YEARS

PARTS LIST:

Qty	Part Description	Qty	Part Description
1	Driver/Left Sidebar	4	10mm ID x 20mm OD x 2mm Flat Washers
1	Passenger/Right Sidebar	2	8-1.25mm x 20mm Bolt Plate (35x20 plate size)
1	Driver/Left Front Mounting Bracket	8	8-1.25mm x 25mm Hex Head Bolts
1	Passenger/Right Front Mounting Bracket	10	8mm Lock Washers
1	Driver/Left Rear Mounting Bracket	2	8mm Hex Nuts
1	Passenger/Right Rear Mounting Bracket	10	8mm ID x 24mm OD x 2mm Flat Washers
2	10-1.50mm "U" Bolts	5	6-1.00mm x 25mm Hex Head Bolts
4	10mm Lock Washers	5	6mm Lock Washers
4	10mm Hex Nuts	5	6mm ID x 18mm OD x 1.6mm Flat Washers



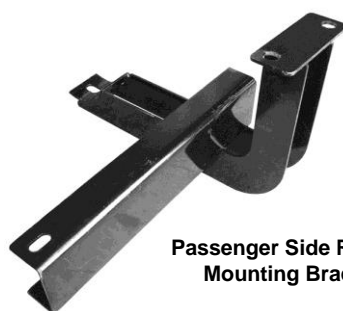
Passenger Side Front
Mounting Bracket



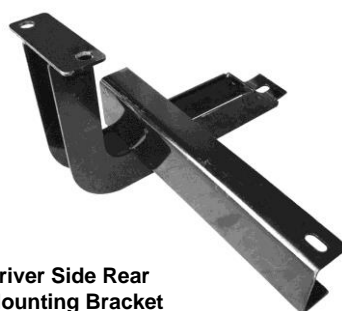
Driver Side Front
Mounting Bracket



8mm x 20mm
Bolt Plates



Passenger Side Rear
Mounting Bracket



Driver Side Rear
Mounting Bracket



10mm "U" Bolts

INSTALLATION PROCEDURE:

SOME CUTTING REQUIRED.**Driver Side Front Mounting Bracket Installation:**

1. Remove the factory screw on the inside of the frame rail located by the front of the vehicle (**Figure 1**).
2. In the same direction where the factory screw is located there is a plastic plug covering the factory hole in the side panel. Use a flat screw driver to remove the plastic plug (**Figure 1**). **NOTE:** This plastic plug is covered with tar and is very hard to find it. Push along the side panel until you feel a soft spot.
3. Insert one of the 8mm x 20mm Bolt Plates into the factory hole in the side panel (**Figure 2**).
4. Position Bracket up to the vehicle and inspect mounting area for excess rubber insulation. Remove excessive insulation as necessary to level mounting surface. Partially attach the outside of the Bracket to already inserted bolt plate using the included (1) 8mm Hex Nut, (1) 8mm Lock Washer, and (1) 8mm Flat Washer (**Figure 3 & 4**).

NOTE: 04-05 Models mount in the hole towards the rear of the vehicle and 06-08 Models mount in the hole towards the front of the vehicle.

5. Attach the inside of the Bracket to previously removed factory bolt mounting location. Replace the factory bolt with the included (1) 6mm x 25mm Hex Head Bolt, (1) 6mm Lock Washer, and (1) 6mm Flat Washer (**Figure 3 & 5**). Do not tighten at this time.

Passenger Side Front Mounting Bracket Installation:

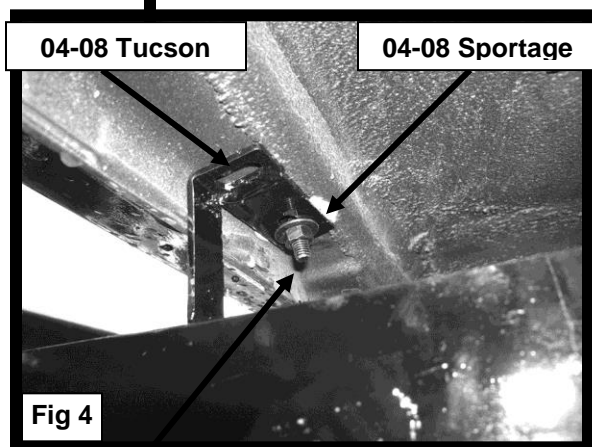
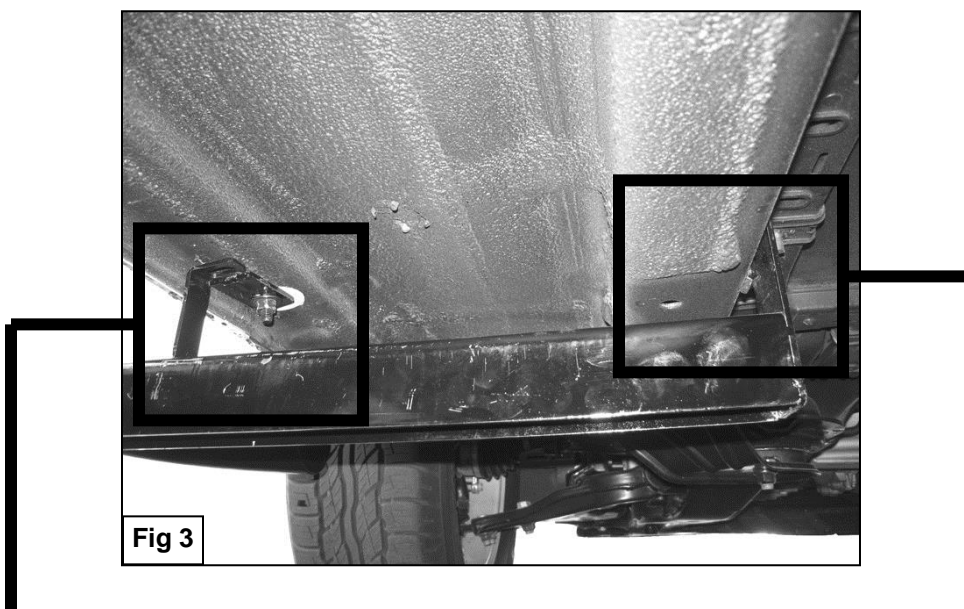
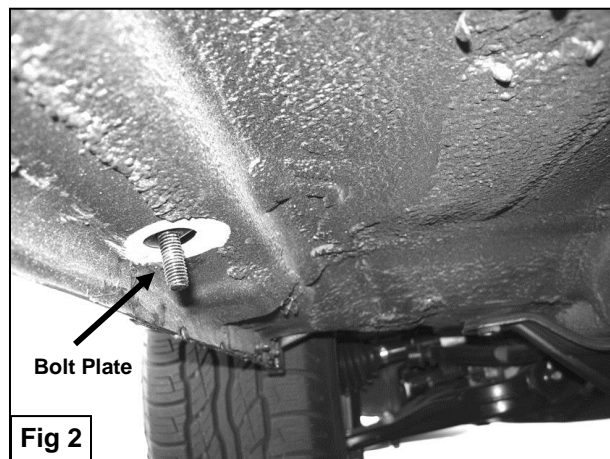
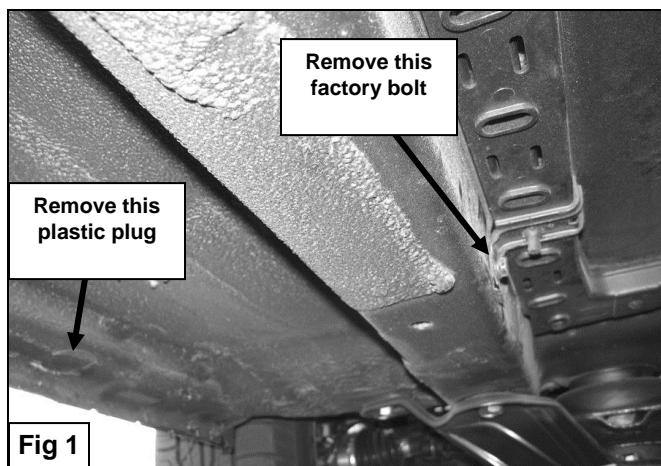
6. Remove the two factory bolts holding the outside of the heat shield (**Figure 6**). **NOTE:** You will be replacing these factory bolts with the included 6mm hardware.
7. Slightly pull down on the heat shield and place Bracket between the heat shield and the side rail. Temporarily install the Bracket without the heat shield with the included (2) 6mm x 25mm Hex Head Bolts, (2) 6mm Lock Washers, and (2) 6mm Flat Washers. Position Bracket up to the vehicle and inspect mounting area for excess rubber insulation. Remove excessive insulation as necessary to level mounting surface. Push back the heat shield until it reaches the Bracket and mark the cutting location on the heat shield (**Figure 7**).
8. Remove Bracket from vehicle and use a pair of sheet metal cutting scissors to cut out the marked location.
9. In the same direction where the front factory screw is located there is a plastic plug covering the factory hole in the side panel. Use a flat screw driver to remove the plastic plug (**Figure 6**). **NOTE:** This plastic plug is covered with tar and is very hard to find it. Push along the side panel until you feel a soft spot.
10. Insert one of the 8mm x 20mm Bolt Plates into the factory hole in the side panel (**Figure 8**).
11. Position Bracket up to the side rail and place heat shield over Bracket. Attach heat shield and Bracket to side rail using the hardware listed in step six (**Figure 9**).
12. Attach the outside of the Bracket to already inserted Bolt Plate using the included (1) 8mm Hex Nut, (1) 8mm Lock Washer, and (1) 8mm Flat Washer (**Figure 10**). Do not tighten at this time. **NOTE:** 04-05 Models mount in the hole towards the rear of the vehicle and 06-08 Models mount in the hole towards the front of the vehicle.

Rear Mounting Brackets Installation:

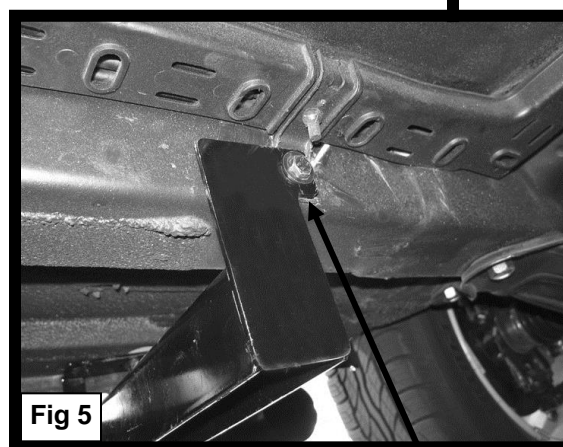
13. Starting on the driver side, remove the oval shape rubber plug and the round plastic plug located in the rear side of the floor panel (**Figure 11**). Use a flat screw driver to remove the plastic plug. **NOTE:** This plastic plug is covered with tar and is very hard to find it. Push on the rear side of the oval shape hole until you feel a soft spot.
14. Remove a factory bolt located in the side panel by the front of the oval shape hole. **NOTE:** You will be replacing this bolt with the included 6mm bolt. Remove edge from plastic tray as shown to clear Sidebar Bracket, (**Figure 12**).
15. Insert one of the included "U" Bolts through oval shape hole and round hole (**Figure 13**). Partially hang rear Mounting Bracket to already inserted "U" Bolt using the included (2) 10mm Hex Nuts, (2) 10mm Lock Washers, and (2) 10mm Flat Washers (**Figure 14**). Position Bracket up to the vehicle and inspect mounting area for excess rubber insulation. Remove excessive insulation as necessary to level mounting surface.
16. Attach the front end of the Mounting Bracket to threaded hole in the side panel using the included (1) 6mm x 25mm Hex Bolt, (1) 6mm Lock Washer, and (1) 6mm Flat Washer (**Figure 15**).
17. Position driver Sidebar onto Mounting Brackets and attach it using the included (4) 8mm x 25mm Hex Head Bolts, (4) 8mm Lock Washers, and (4) 8mm Flat Washers (**Figure 16**).
18. Level and adjust Sidebar properly; and then tighten all hardware at this time.
19. Repeat steps 13-18 for passenger side.
20. Do periodic inspections to the installation to make sure that all hardware is secure and tight.

Driver Side Front Mounting Bracket Installation Shown

The tube in installation instruction is different from the one in reality. But the brackets and the installation method are same.

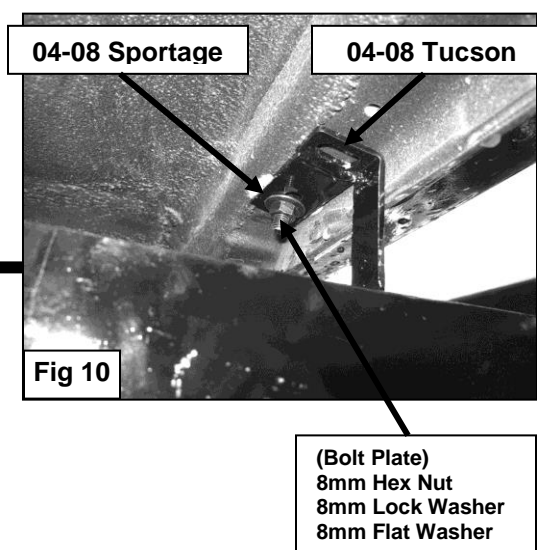
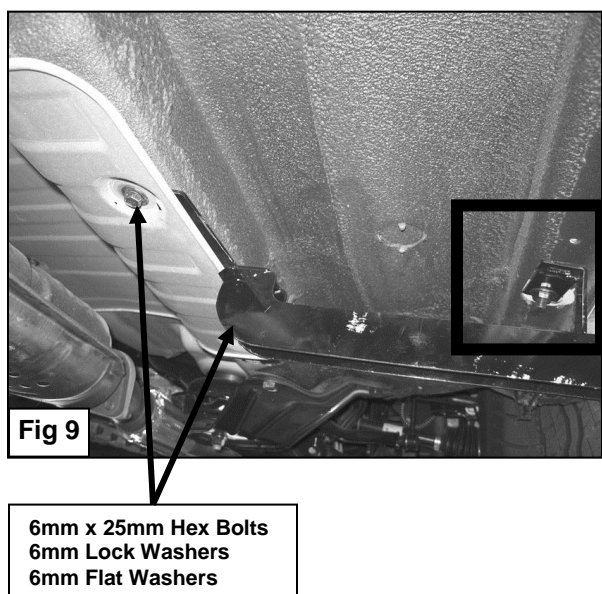
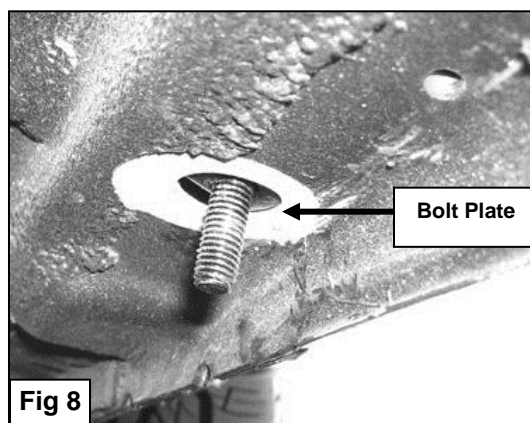
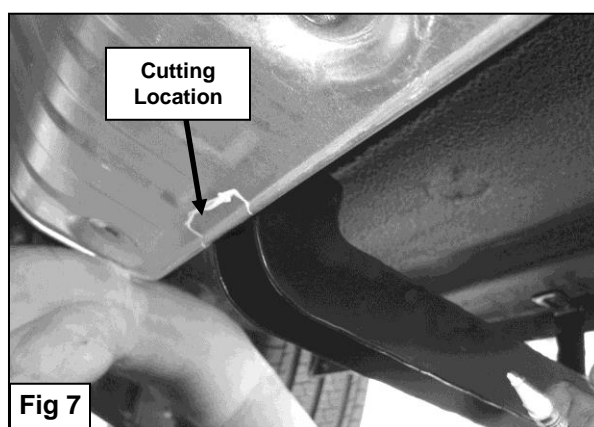
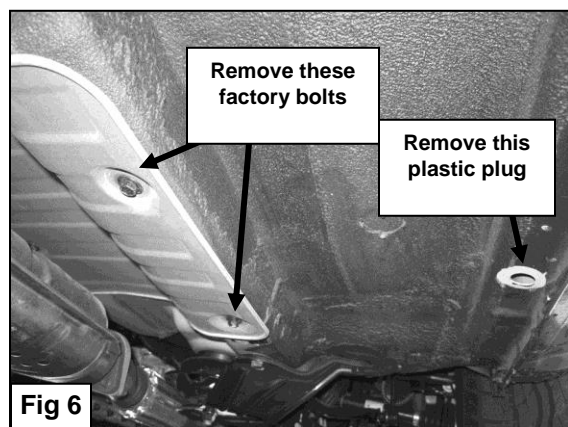


(Bolt Plate)
8mm Hex Nut
8mm Lock Washer
8mm Flat Washer

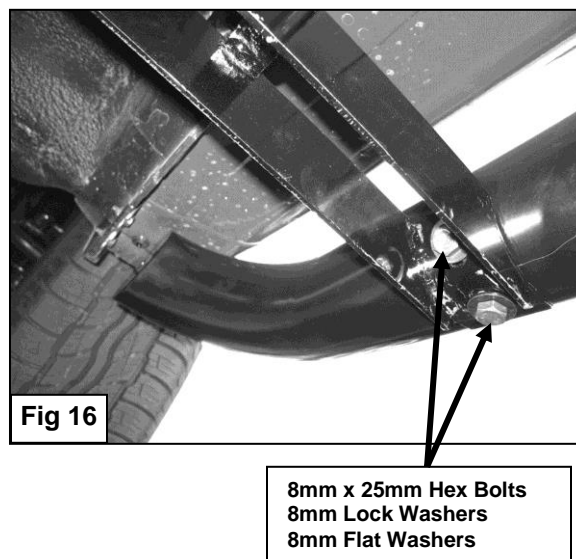
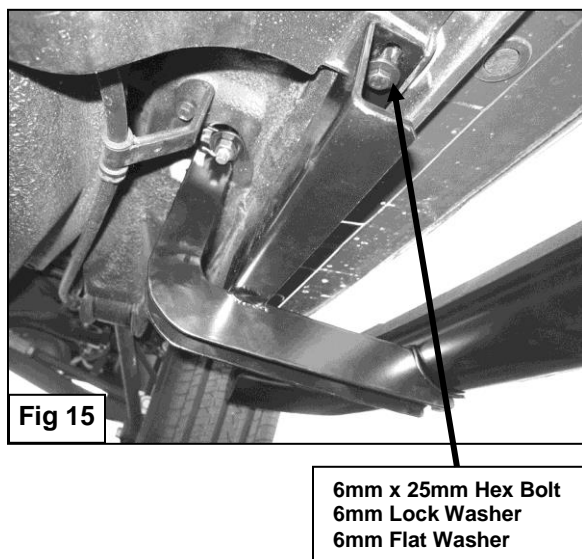
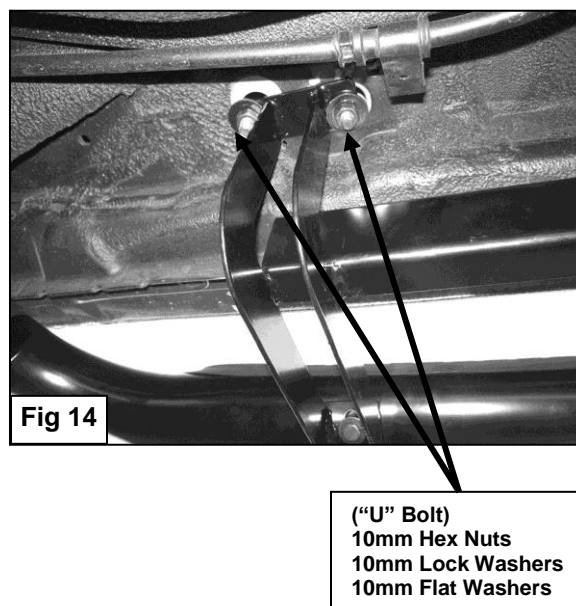
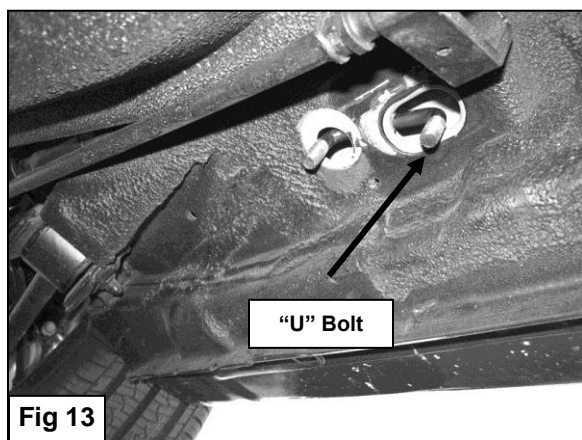
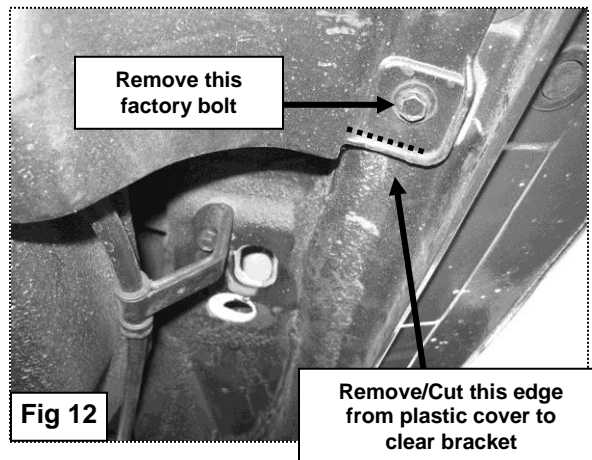
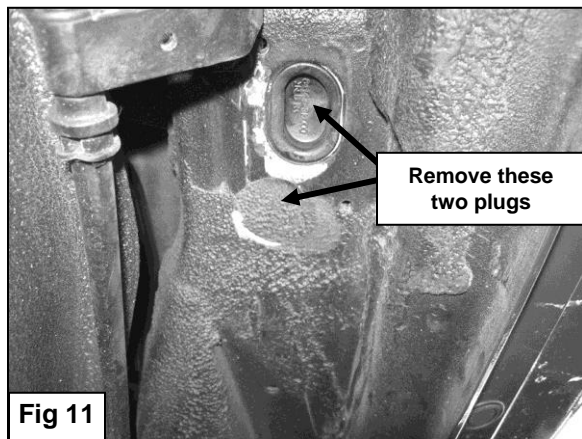


6mm x 25mm Hex Bolt
6mm Lock Washer
6mm Flat Washer

Passenger Side Front Mounting Bracket Installation Shown



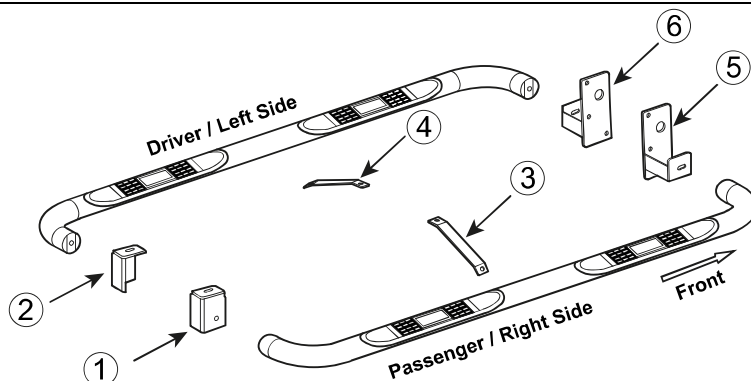
Driver Side Rear Mounting Bracket Installation Shown



No.	Parts Identification
1	Passenger / Right 'Rear' Bracket marked "PR"
2	Driver / Left 'Rear' Bracket marked "DR"
3	Passenger / Right 'Center' Bracket marked "PC"
4	Driver / Left 'Center' Bracket marked "DC"
5	Passenger / Right 'Front' Bracket marked "PF"
6	Driver / Left 'Front' Bracket marked "DF"

Note:

- This guide is to identify the parts and not a reference for part count.
- For part count, refer Parts List.
- Product / Bracket image is representative and actual design may vary.

**PRODUCT CARE**

- Periodically check the product to ensure all fasteners are tight and components are intact.
- Regular waxing is recommended to protect the finish of the product.
- **Use ONLY Non-Abrasive automotive wax.** Use of any soap, polish or wax that contains an abrasive is detrimental and can scratch the finish leading to corrosion.
- Aluminum polish may be used to polish small scratches and scuffs for **Stainless Steel finish.**
- Mild soap may be used to clean the product for both **Stainless Steel and Black finish.**

FAQ's**1. Hardware's are not of correct size.**

In GMC / Chevrolet truck model 2006 & up, customer needs to reuse the factory body bolts to install the bracket. If your vehicle is not GMC / Chevrolet 2006 & up, ensure that holes are not partially covered with any plastic grommet or rust? If it is, remove the plastic grommet & rust from the thread holes & re-try the installation.

2. Mounting Bracket are not getting Installed properly.

In some cases Illustration images shown in Installation manual may not be the exactly same as per actual vehicle images ,also if Driver / Passenger side mounting brackets are very identical in the design, suggest referring Parts Identification guide to avoid fitment issue.

3. Products are thumping / rattling after installation.

Ensure that all required mounting brackets / hardware's are installed & tighten correctly. Suggest using white lithium / regular grease between the metal to metal contact surfaces.

4. Side Bar is not aligning with vehicle / Step Pads are not aligning with vehicle doors.

Side bar may be interchanged or mounting brackets are not installed at the correct position in the vehicle. Refer Parts identification guide.

5. Missing / Excess Hardware.

Recheck hardware count as per the part list.

6. Product not installing properly.

Ensure make model year, cab length and bed size of your vehicle is listed in the application. All installation steps are followed correctly.

Check out these other TrailFX Products!!

www.TrailFX.com



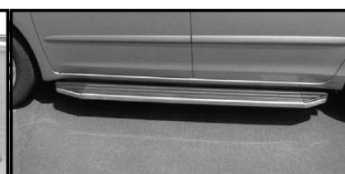
BULL BAR



GRILLE GUARDS



BED RAILS



RUNNING BOARDS

Keystone Automotive Operations Inc. (KAO) warrants this product to be free of defects in material and workmanship at the time of purchase by the original retail consumer. KAO disclaims any other warranties, express or implied, including the warranty of fitness for a particular purpose or an intended use. If the product is found to be defective, KAO may replace or repair the product at our option, when the product is returned prepaid, with proof of purchase. Alteration to, improper installation, or misuse of this product voids the warranty. KAO's liability is limited to repair or replacement of products found to be defective, and specifically excludes liability for any incidental or consequential loss or damage.