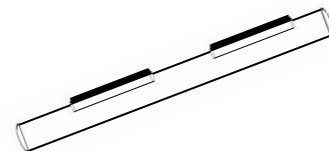




4" Oval Nerf Bar

Part No. A1513S/B

Fits: **2004-2006****Toyota Tundra Double Cab**

ASSISTANCE IS RECOMMENDED.



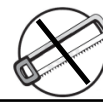
REMOVE CONTENTS FROM BOX. VERIFY ALL PARTS ARE PRESENT.



READ INSTRUCTIONS CAREFULLY BEFORE STARTING INSTALLATION.

DO NOT OVER TORQUE. STANDARD OPERATING LOAD FOR TIGHTEN BODY MOUNT NUTS & BOLTS VARIES FROM **45** TO **65** FOOT POUND.

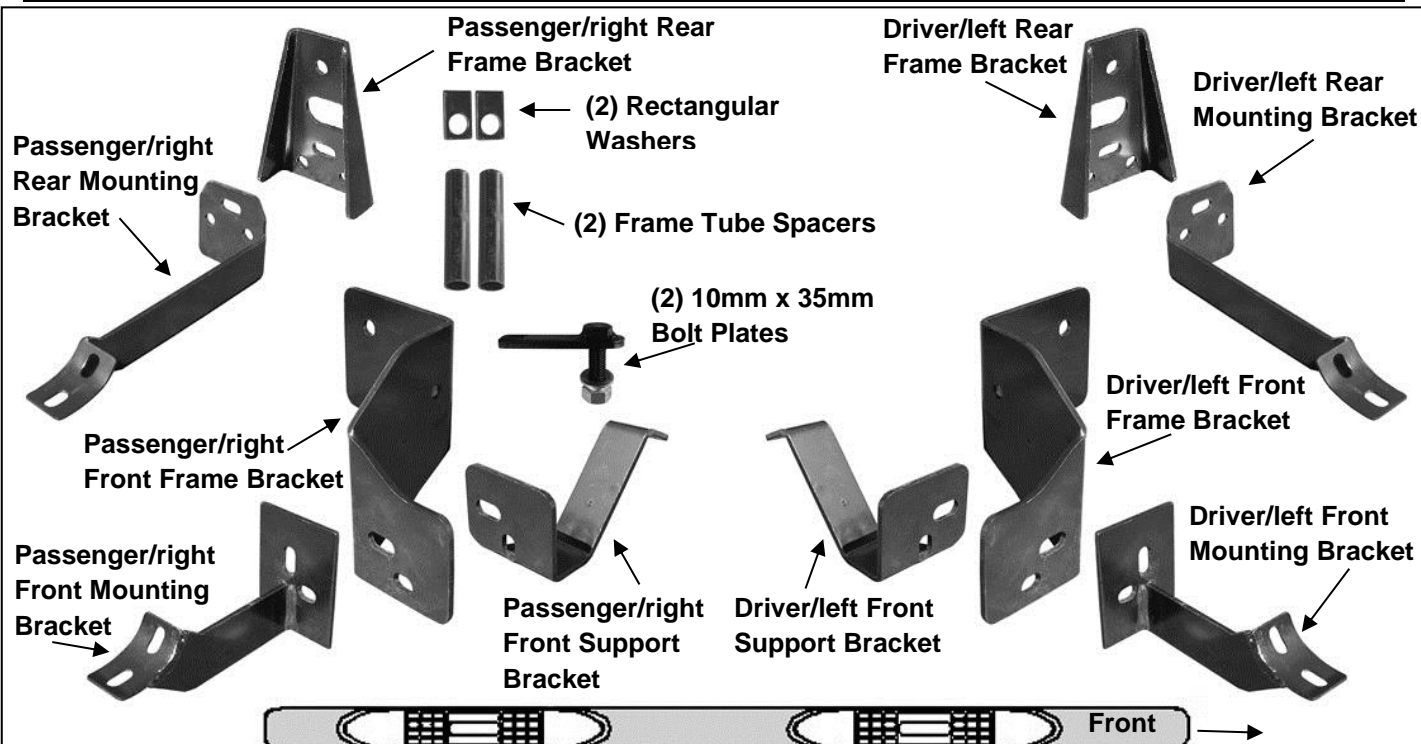
60-180 min

Cutting Not
RequiredDrilling Not
Requiredsupport@trailfx.com

1 866 638 4870

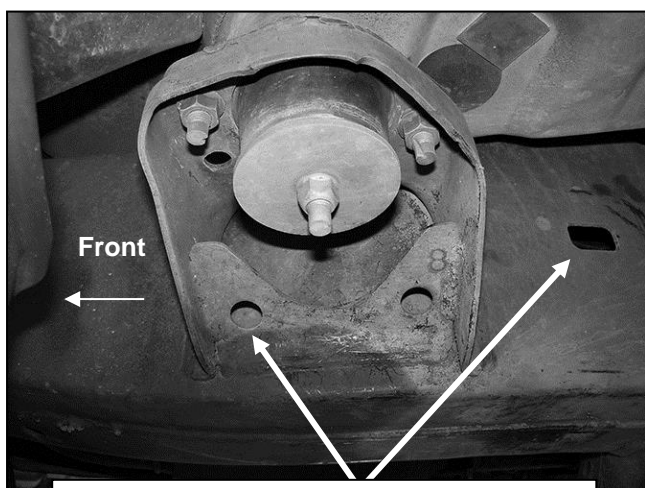
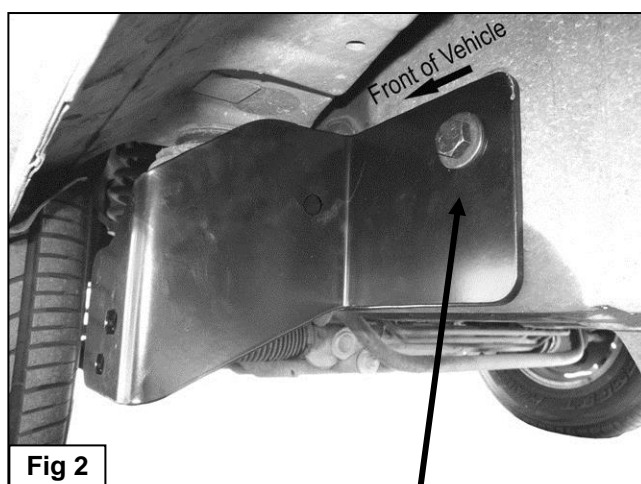
POLISHED STAINLESS STEEL – LIMITED LIFETIME
POWDER COATED BLACK – 3 YEARS**PARTS LIST:**

Qty	Part Description	Qty	Part Description
1	Driver/Left Sidebar	2	Tube Spacers (19mm x 95mm)
1	Passenger/Right Sidebar	2	Rectangular Washers
1	Driver/Left Front Frame Mounting Bracket	2	10mm x 35mm Bolt Plates
1	Passenger/Right Front Frame Mounting Bracket	2	12-1.75mm x 140mm Hex Bolts
1	Driver/Left Front Support Bracket	8	12-1.75mm x 40mm Hex Head Bolts
1	Passenger/Right Front Support Bracket	8	12mm x 32mm OD x 3mm Flat Washers
1	Driver/Left Front Sidebar Mounting Bracket	12	12mm x 24mm OD x 2.5mm Flat Washers
1	Passenger/Right Front Sidebar Mounting Bracket	10	12mm Lock Washers
1	Driver/Left Rear Frame Mounting Bracket	10	12mm Hex Nuts
1	Passenger/Right Rear Frame Mounting Bracket	4	10-1.50mm x 30mm Hex Bolts
1	Driver/Left Rear Sidebar Mounting Bracket	12	10mm x 20mm OD x 2mm Flat Washers
1	Passenger/Right Rear Sidebar Mounting Bracket	6	10mm Lock Washers
		6	10mm Hex Nuts
		8	8mm Combo Bolts



INSTALLATION PROCEDURE:**ASSISTANCE IS RECOMMENDED.**

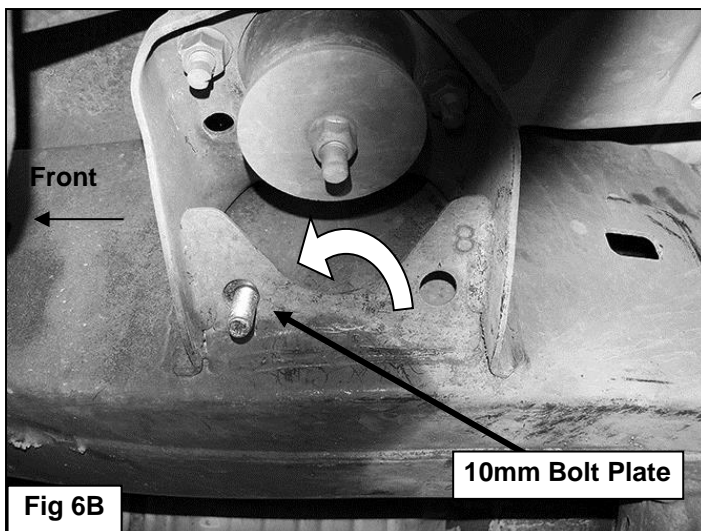
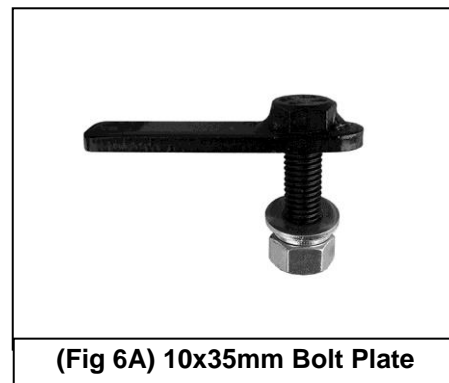
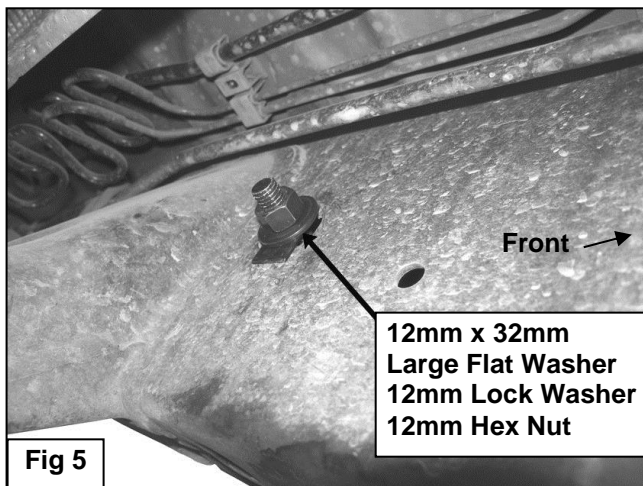
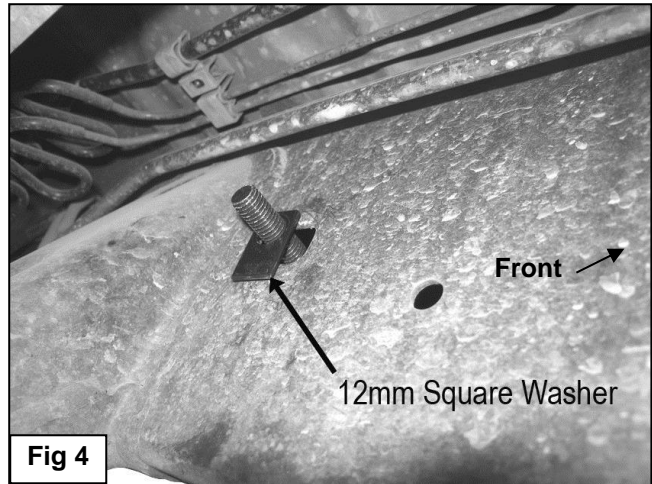
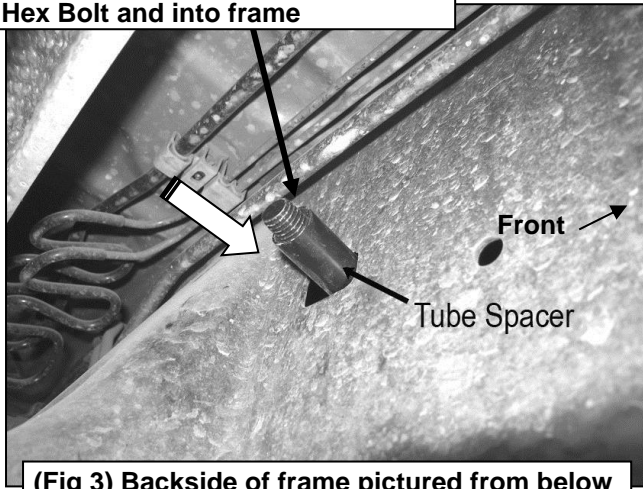
1. Start installation at the front, driver side of the vehicle. Locate the rectangular factory hole in the frame near the front body mount, **(Figure 1)**. Select the driver side front Frame Mounting Bracket and hold it up to the frame. Line up the hole in the Bracket with factory rectangular hole in the frame. Insert (1) 12mm x 140mm Hex Head Bolt with (1) 12mm x 32mm Large Flat Washer through Mounting Bracket and frame, **(Figure 2)**. From the back of the frame, slide (1) Tube Spacer over the 12mm x 140mm Hex Bolt and push it into the frame, **(Figure 3)**. Slide (1) Square Washer over the Hex Bolt and Spacer to cover the square hole in the frame, **(Figure 4)**, followed by (1) 12mm x 32mm Large Flat Washer, (1) 12mm Lock Washer, and (1) 12mm Hex Nut, **(Figure 5)**. Snug but do not tighten at this time.
2. Locate the two holes in the bottom of the factory body mount bracket, **(Figure 1)**. Insert (1) 10x35mm Bolt Plate up, into and down through the forward hole in the gusset welded to the bottom of the body mount, **(Figures 6A & 6B)**. Hang the driver side Front Support Bracket from the Bolt Plate with the included (1) 10mm x 20mm OD x 2mm Flat Washer, (1) 10mm Lock Washer and (1) 10mm Hex Nut, **(Figure 7)**. Leave hardware loose at this time.
3. Select the driver side Front Sidebar Bracket. Line up the mounting holes with the holes in the previously installed Frame Mounting Bracket and Support Bracket, **(Figures 8 & 9)**. Bolt the (3) Brackets together with (2) 12mm x 40mm Hex Bolts, (4) 12mm x 24mm Small Flat Washers, (2) 12mm Lock Washers and (2) 12mm Hex Nuts. Snug but do not tighten hardware at this time.
4. Move toward the rear mounting location, **(Figure 10)**. Select (1) 12mm x 40mm Hex Bolt and (1) 12mm x 32mm OD x 3mm Large Flat Washer. Insert the Hex Bolt and Washer up behind the frame and out through the slot in the side of the frame, **(Figure 11)**. **NOTE:** Loosen or remove the plastic cover under the gas tank for access if necessary.
5. Attach the driver side Rear Frame Mounting Bracket to the frame and Hex Bolt with the included (1) 12mm x 32mm OD x 3mm Large Flat Washer, (1) 12mm Lock Washer and (1) 12mm Hex Nut, **(Figure 12)**. Do not tighten hardware at this time.
6. Line up the (3) holes in the Frame Mounting Bracket with the holes in the driver side Rear Sidebar Bracket. Insert (1) 12mm x 40mm Hex Bolt with (2) 12mm x 24mm OD x 2.5mm Small Flat Washers, (1) 12mm Lock Washer and (1) 12mm Hex Nut through the top mounting hole. Insert (2) 10mm x 30mm Hex Bolts, (4) 10mm Flat Washers, (2) 10mm Lock Washers and (2) 10mm Hex Nuts through the (2) remaining mounting holes, **(Figure 13)**. Snug but do not tighten hardware at this time.
7. Carefully place the driver side Sidebar onto the Mounting Brackets and line up the threaded inserts with the slots in the brackets. Secure the Sidebar to the Brackets with (4) 8mm Combo Bolts, **(Figures 14 & 15)**. Snug but do not tighten hardware at this time.
8. Level and adjust Sidebar properly and tighten all hardware. Reattach the plastic cover removed in **Step 4** if necessary.
9. Repeat **Steps 1—8** for passenger Sidebar installation.
10. Do periodic inspections to the installation to make sure that all hardware is secure and tight.

Driver Side Installation Pictured**(Fig 1) Driver/left front mounting location****Fig 2**

**12mm x 140mm Hex Bolt
12mm x 32mm Large Flat Washer**

Driver Side Installation Pictured

Slide Tube Spacer over 12x140mm
Hex Bolt and into frame



Driver Side Installation Pictured

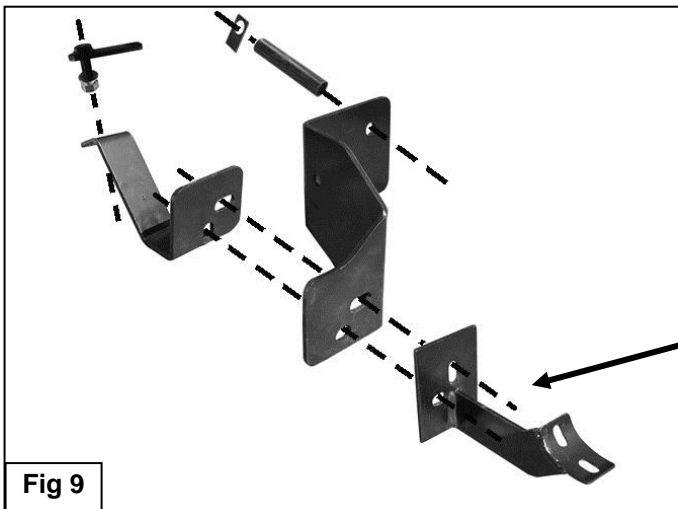


10mm x 20mm Flat Washer
10mm Lock Washer
10mm Hex Nut

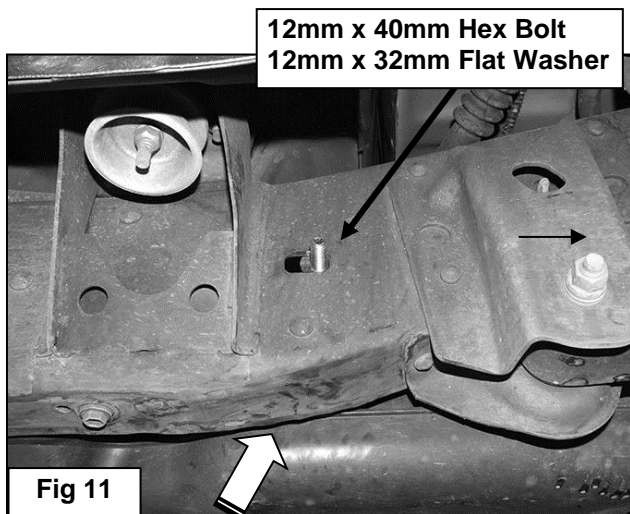
(2) 12mm x 40mm Hex Bolts
(4) 12mm x 24mm Flat Washers
(2) 12mm Lock Washers
(2) 12mm Hex Nuts



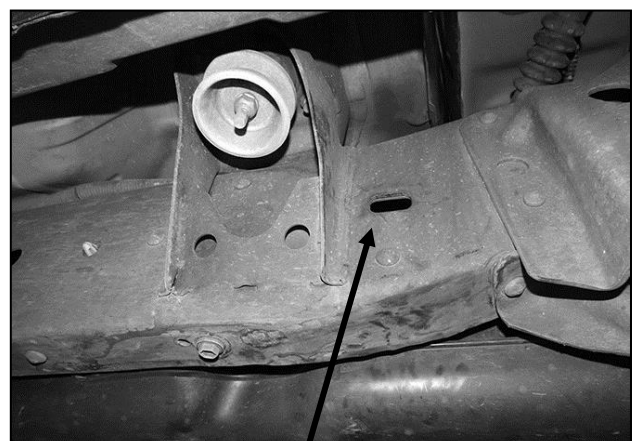
Fig 8) Driver/left front Brackets pictured from below



(2) 12mm x 40mm Hex Bolts
(4) 12mm x 24mm Flat Washers
(2) 12mm Lock Washers
(2) 12mm Hex Nuts

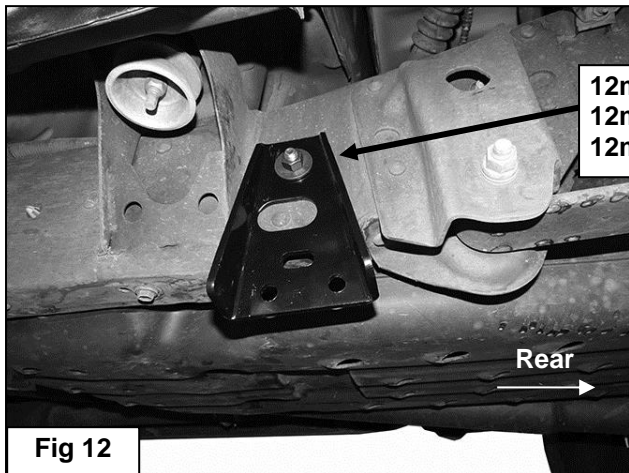


12mm x 40mm Hex Bolt
12mm x 32mm Flat Washer

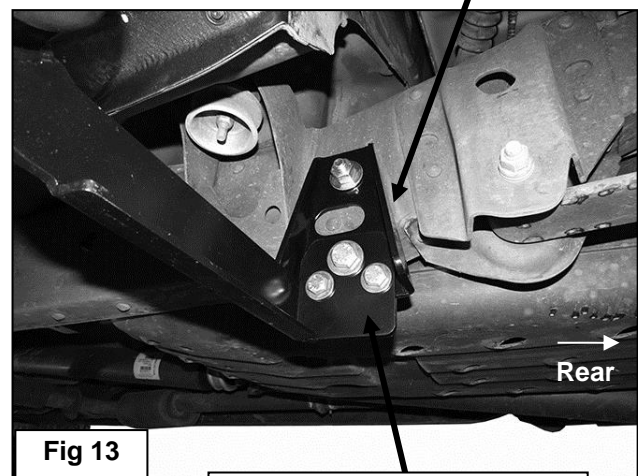


(Fig 10) Driver/left rear mounting location

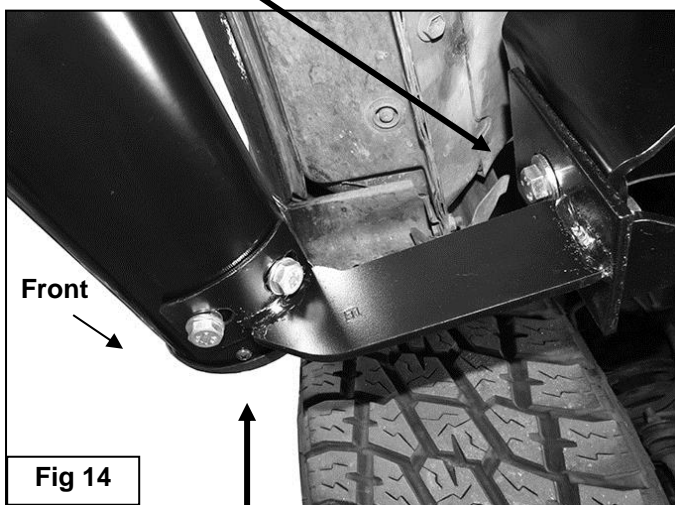
Driver Side Installation Pictured



- (1) 12mm x 40mm Hex Bolt
- (2) 12mm x 24mm Small Flat Washers
- (1) 12mm Lock Washer
- (1) 12mm Hex Nut



- (2) 10mm x 30mm Hex Bolts
- (4) 10mm Flat Washers
- (2) 10mm Lock Washers
- (2) 10mm Hex Nuts



- (2) 8mm Combo Bolts



Driver Side Installation Illustrated

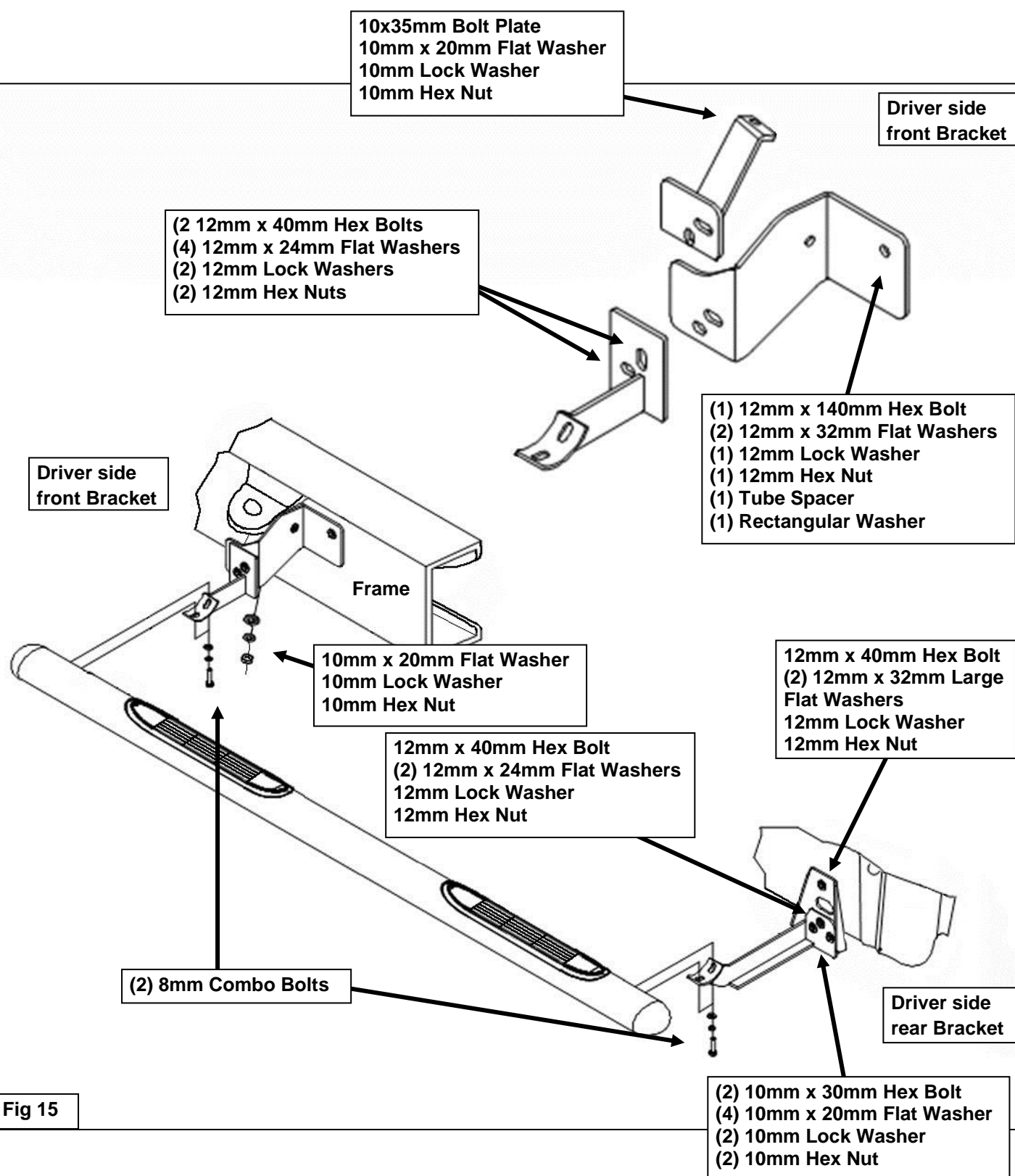


Fig 15

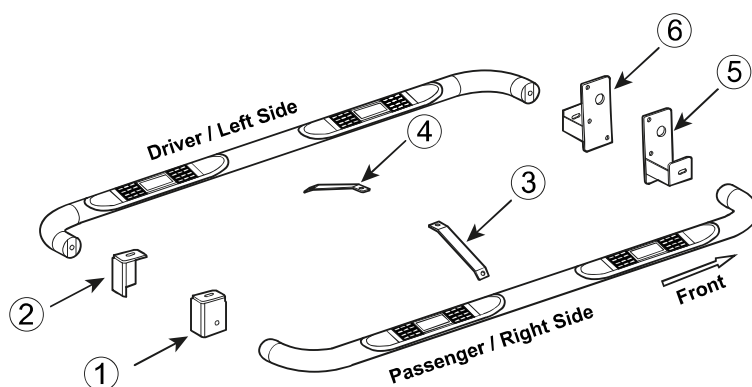
PARTS IDENTIFICATION GUIDE

Driver Side tube packed using "Green" color foam sheet. Passenger Side tube packed using "White" color foam sheet

No.	Parts Identification
1	Passenger / Right 'Rear' Bracket marked "PR"
2	Driver / Left 'Rear' Bracket marked "DR"
3	Passenger / Right 'Center' Bracket marked "PC"
4	Driver / Left 'Center' Bracket marked "DC"
5	Passenger / Right 'Front' Bracket marked "PF"
6	Driver / Left 'Front' Bracket marked "DF"

Note:

- This guide is to identify the parts and not a reference for part count.
- Product / Bracket image is for representative purpose only.
- Actual design may vary based on application.
- Refer Installation Instructions for Hardware Kit detail.

**PRODUCT CARE**

- Periodically check the product to ensure all fasteners are tight and components are intact.
- Regular waxing is recommended to protect the finish of the product.
- **Use ONLY Non-Abrasive automotive wax.** Use of any soap, polish or wax that contains an abrasive is detrimental and can scratch the finish leading to corrosion.
- Aluminum polish may be used to polish small scratches and scuffs for **Stainless Steel finish.**
- Mild soap may be used to clean the product for both **Stainless Steel and Black finish.**

FAQ's**1. Hardware's are not of correct size.**

In GMC / Chevrolet truck model 2006 & up, customer needs to reuse the factory body bolts to install the bracket. If your vehicle is not GMC / Chevrolet 2006 & up, please ensure that holes are not partially covered with any plastic grommet or rust? If it is, please remove the plastic grommet & rust from the thread holes & re-try the installation.

2. Mounting Bracket are not getting Installed properly.

In some cases Illustration images shown in Installation manual may not be the exactly same as per actual vehicle images ,also if Driver / Passenger side mounting brackets are very identical in the design, suggest referring Parts Identification guide to avoid fitment issue.

3. Products are thumping / rattling after installation.

Please ensure that all required mounting brackets / hardware's are installed & tighten correctly. Suggest using white lithium / regular grease between the metal to metal contact surfaces.

4. Side Bar is not aligning with vehicle / Step Pads are not aligning with vehicle doors.

Side bar may be interchanged or mounting brackets are not installed at the correct position in the vehicle. Please refer Parts identification guide.

5. Missing / Excess Hardware.

Recheck hardware count as per the part list.

6. Product not installing properly.

Ensure make model year, cab length and bed size of your vehicle is listed in the application. All installation steps are followed correctly.

Check out these other TrailFX Products!!

www.TrailFX.com

**BULL BARS****GRILLE GUARDS****BED RAILS****RUNNING BOARDS**

Keystone Automotive Operations Inc. (KAO) warrants this product to be free of defects in material and workmanship at the time of purchase by the original retail consumer. KAO disclaims any other warranties, express or implied, including the warranty of fitness for a particular purpose or an intended use. If the product is found to be defective, KAO may replace or repair the product at our option, when the product is returned prepaid, with proof of purchase. Alteration to, improper installation, or misuse of this product voids the warranty. KAO's liability is limited to repair or replacement of products found to be defective, and specifically excludes liability for any incidental or consequential loss or damage.