



Grille Guard

Part No. 81360/81361



Fits: 2003 - 2009 Toyota 4-Runner



THE BULL BAR MAY INTERFERES WITH PARKING SENSORS, PROXIMITY SENSORS AND CRUISE CONTROL SENSORS.



60-180 min



Cutting Is Required



Drilling Not Required



REMOVE CONTENTS FROM BOX. VERIFY ALL PARTS ARE PRESENT.



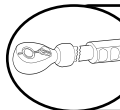
support@trailfx.com



READ INSTRUCTIONS CAREFULLY BEFORE STARTING INSTALLATION.



1 866 638 4870



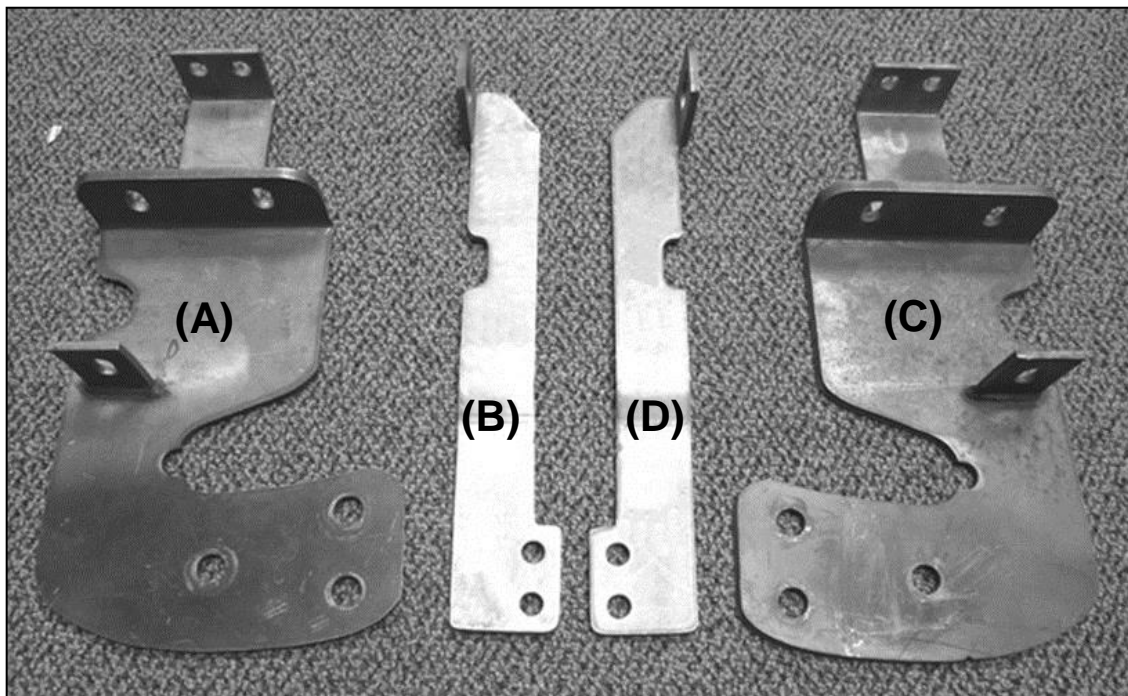
DO NOT OVER TORQUE. STANDARD OPERATING LOAD FOR TIGHTEN BODY MOUNT NUTS & BOLTS VARIES FROM 45 TO 65 FOOT POUND.



POLISHED STAINLESS STEEL – LIMITED LIFETIME
POWDER COATED BLACK – 3 YEARS

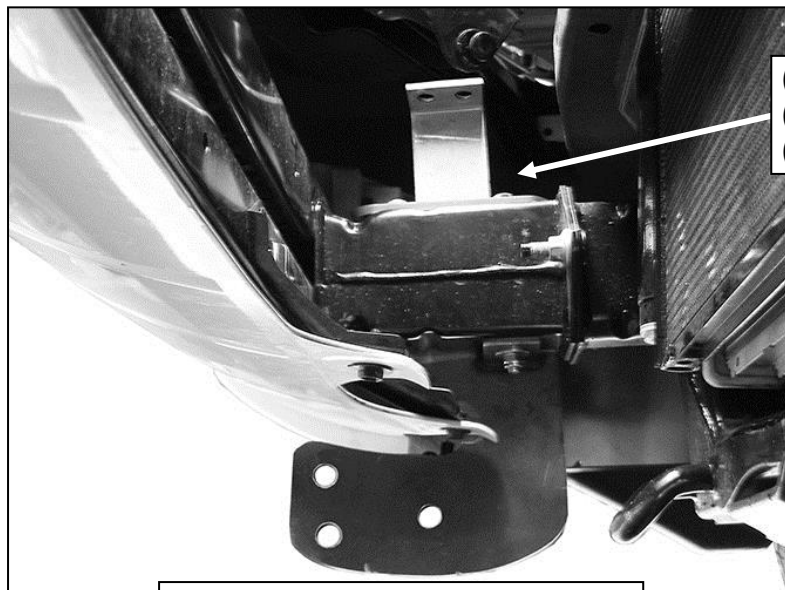
PARTS LIST:

Qty	Part Description	Qty	Part Description
1	Grille Guard	6	12mm Nylon Lock Nuts
1	Driver/left Frame Bracket (A)	6	10-1.50mm x 25mm Hex Bolts
1	Passenger/right Frame Bracket (C)	12	10mm x 20mm x 2mm Flat Washers
1	Driver/left Top Support Bracket (B)	6	10mm Nylon Lock Nuts
1	Passenger/right Top Support Bracket (D)	4	8-125mm x 120mm x 35mm Hex Bolts
6	12-1.75mm x 30mm Hex Bolts	8	8mm x 16mm x 1.6mm Flat Washers
12	12mm Flat Washers	4	8mm Nylon Lock Nuts



INSTALLATION PROCEDURE:**ASSISTANCE IS RECOMMENDED.**

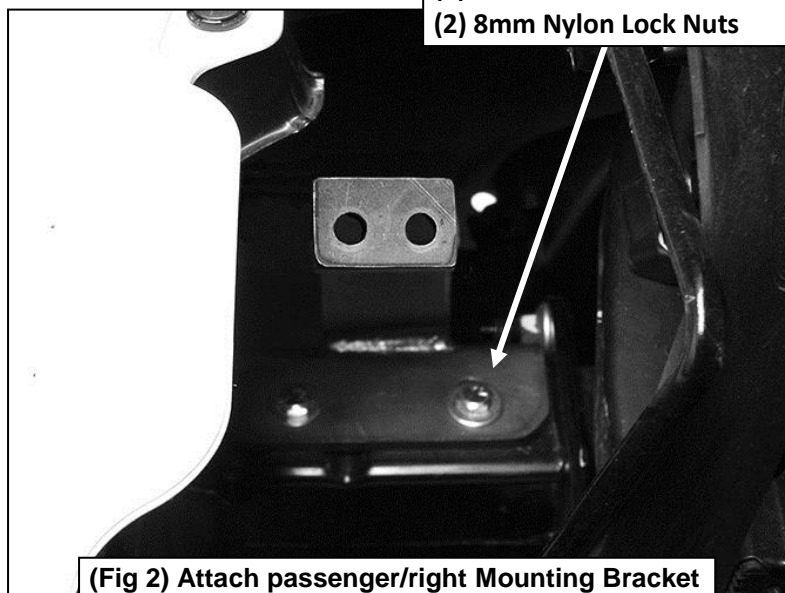
1. Starting at the front, passenger side of the vehicle, locate the two existing holes through top to the bottom of the bumper bracket, **(Figure 1)**.



(2) 8mm x 120mm Hex Bolts
(4) 8mm Flat Washers
(2) 8mm Nylon Lock Nuts

(Fig 1) Slide Mounting Bracket over outside of factory bumper bracket

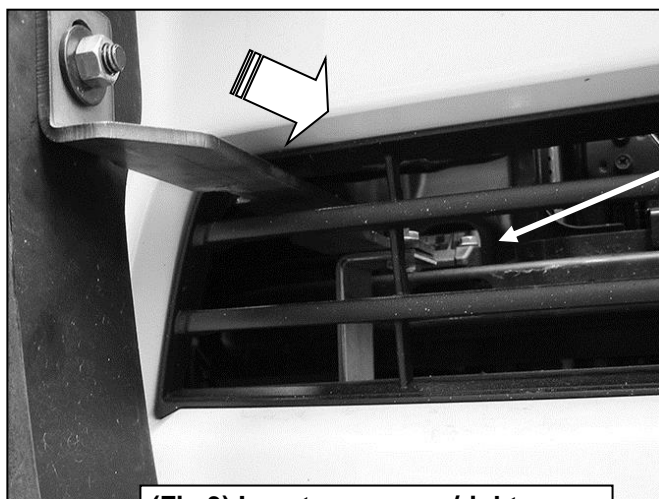
2. Position the Passenger/right Mounting Bracket onto the outside of the bumper bracket, **(Figure 1)**. Line up the holes on the Mounting Bracket with the factory holes on the bumper bracket. Attach the Mounting Bracket to the factory bumper bracket with the included (2) 8mm x 120mm Hex Bolts, (4) 8mm Flat Washers and (2) 8mm Nylon Lock Nuts, **(Figures 1 & 2)**. Do not tighten at this time.



(2) 8mm x 120mm Hex Bolts
(4) 8mm Flat Washers
(2) 8mm Nylon Lock Nuts

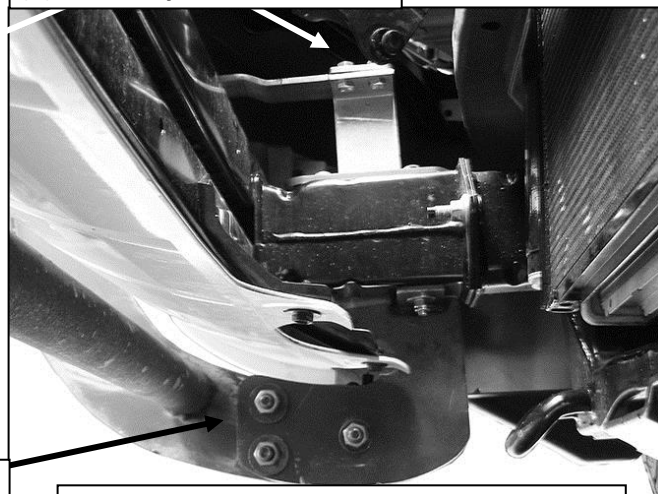
(Fig 2) Attach passenger/right Mounting Bracket to bumper bracket (viewed from above)

3. Repeat **Steps 2 & 3** to install the driver/left Mounting Bracket.
4. Next, select the passenger/right Top Support Bracket. Insert the flat end of the Top Bracket through the upper section of the factory grille, **(Figure 3)**. Attach the Support Bracket to the top of the Mounting Bracket with the included (2) 10mm x 25mm Hex Bolts, (4) 10mm Flat Washers and (2) 10mm Nylon Lock Nuts, **(Figure 4)**. Do not tighten at this time.



(Fig 3) Insert passenger/right Support Bracket through grille

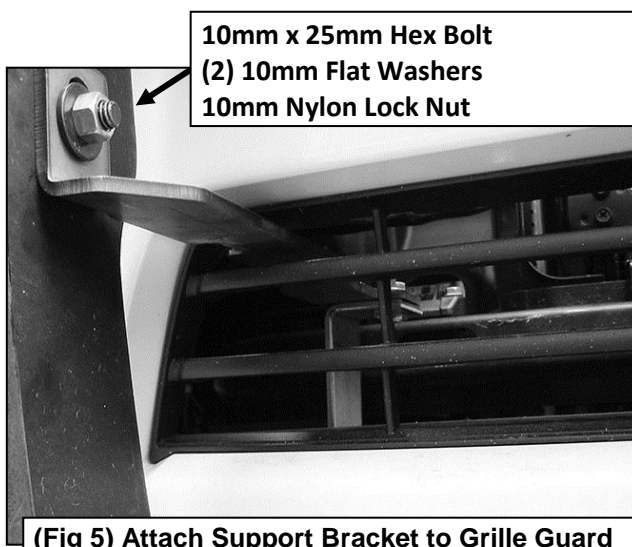
**(2) 10mm x 25mm Hex Bolts
(4) 10mm Flat Washers
(2) 10mm Nylon Lock Nuts**



(Fig 4) Attach Support Bracket to top of Mounting Bracket. Attach Grille Guard to outside of Mounting Brackets

**(3) 12mm x30mm Hex Bolts
(6) 12mm Flat Washers
(3) 12mm Nylon Lock Nuts**

5. Repeat **Step 5** to install the driver/left Top Support Bracket.
6. With assistance, position the Grille Guard onto the outside of the Mounting Brackets. Line up the holes in the Brackets with the Grille Guard. Attach the Grille Guard to the Mounting Brackets with the included (6) 12mm x 30mm Hex Bolts, (12) 12mm Flat Washers and (6) 12mm Nylon Lock Nuts, **(Figure 4)**. Do not fully tighten hardware at this time.
7. Once the bottom Mounting Brackets are loosely installed, proceed to attach the passenger/right Top Support Bracket to the Grille Guard upright with the included 10mm x 25mm Hex Bolt, (2) 10mm Flat Washers and 10mm Nylon Lock Nut, **(Figure 5)**. Do not tighten at this time. Repeat to attach the driver/left Support Bracket to the Grille Guard.



**10mm x 25mm Hex Bolt
(2) 10mm Flat Washers
10mm Nylon Lock Nut**

(Fig 5) Attach Support Bracket to Grille Guard

8. Level and adjust the Grille Guard and tighten all hardware at this time.
9. Do periodic inspections to the installation to make sure that all hardware is secure and tight.



Complete Installation

PRODUCT CARE

- Periodically check the product to ensure all fasteners are tight and components are intact.
- Regular waxing is recommended to protect the finish of the product.
- **Use ONLY Non-Abrasive automotive wax.** Use of any soap, polish or wax that contains an abrasive is detrimental and can scratch the finish leading to corrosion.
- Aluminum polish may be used to polish small scratches and scuffs for **Stainless Steel finish.**
- Mild soap may be used to clean the product for both **Stainless Steel and Black finish.**

FAQ's**1. Hardware's are not of correct size.**

In GMC / Chevrolet truck model 2006 & up, customer needs to reuse the factory body bolts to install the bracket. If your vehicle is not GMC / Chevrolet 2006 & up, ensure that holes are not partially covered with any plastic grommet or rust? If it is, remove the plastic grommet & rust from the thread holes & re-try the installation.

2. Mounting Bracket are not getting Installed properly.

In some cases Illustration images shown in Installation manual may not be the exactly same as per actual vehicle images ,also if Driver / Passenger side mounting brackets are very identical in the design, suggest referring Parts Identification guide to avoid fitment issue.

3. Products are thumping / rattling after installation.

Ensure that all required mounting brackets / hardware's are installed & tighten correctly. Suggest using white lithium / regular grease between the metal to metal contact surfaces.

4. Side Bar is not aligning with vehicle / Step Pads are not aligning with vehicle doors.

Side bar may be interchanged or mounting brackets are not installed at the correct position in the vehicle. Refer Parts identification guide.

5. Missing / Excess Hardware.

Recheck hardware count as per the part list.

6. Product not installing properly.

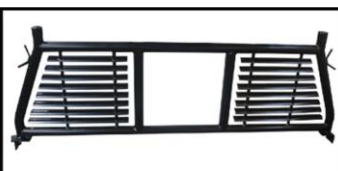
Ensure make model year, cab length and bed size of your vehicle is listed in the application. All installation steps are followed correctly.

Check out these other TrailFX Products!!

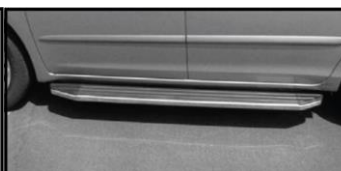
www.TrailFX.com



SIDE BAR



HEADACHE RACKS



RUNNING BOARDS



ROCKER GUARDS

Keystone Automotive Operations Inc. (KAO) warrants this product to be free of defects in material and workmanship at the time of purchase by the original retail consumer. KAO disclaims any other warranties, express or implied, including the warranty of fitness for a particular purpose or an intended use. If the product is found to be defective, KAO may replace or repair the product at our option, when the product is returned prepaid, with proof of purchase. Alteration to, improper installation, or misuse of this product voids the warranty. KAO's liability is limited to repair or replacement of products found to be defective, and specifically excludes liability for any incidental or consequential loss or damage.