



3" Side Bar

Part No. 1184841101/3



Fits: 2010 - 2014

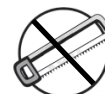
Hyundai Tucson



WITHOUT RUBBER STRIPS MAY INTERFERE WITH PARKING SENSORS, PROXIMITY SENSORS AND EXTERNAL CRUISE CONTROL SENSORS.



60-180 min

CUTTING NOT
REQUIREDDRILLING NOT
REQUIRED

REMOVE CONTENTS FROM BOX. VERIFY ALL PARTS ARE PRESENT.



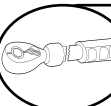
support@trailfx.com



READ INSTRUCTIONS CAREFULLY BEFORE STARTING INSTALLATION.



1 866 638 4870



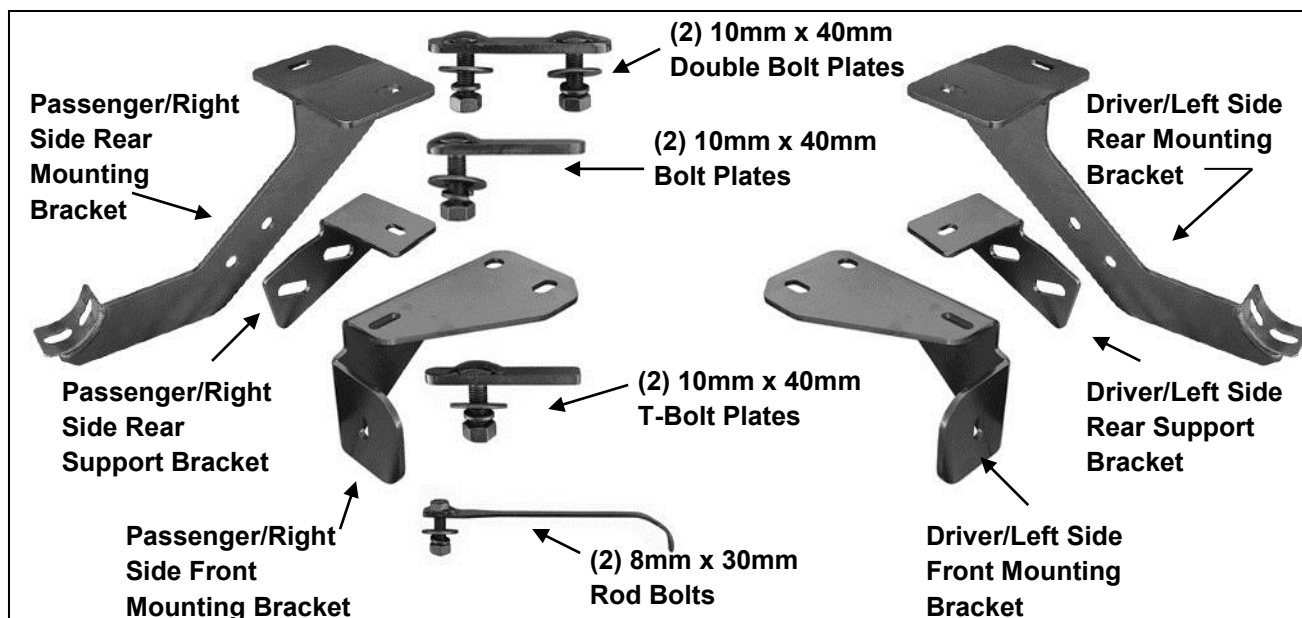
DO NOT OVER TORQUE. STANDARD OPERATING LOAD FOR TIGHTEN BODY MOUNT NUTS & BOLTS VARIES FROM 45 TO 65 FOOT POUND.



POLISHED STAINLESS STEEL - LIMITED LIFETIME
POWDER COATED BLACK - 3 YEARS

PARTS LIST:

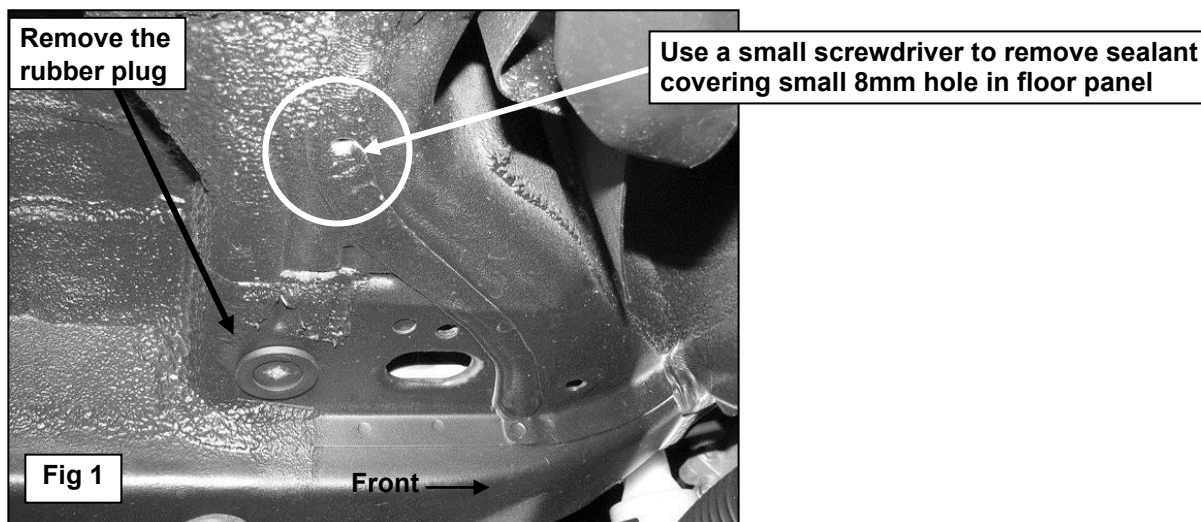
| Qty | Part Description | Qty | Part Description |
|-----|--|-----|-------------------------------------|
| 1 | Driver/Left Sidebar | 2 | 1/2" Lock Washers |
| 1 | Passenger/Right Sidebar | 4 | 10-1.50mm x 30mm Hex Bolts |
| 1 | Driver/Left Front Mounting Bracket | 8 | 10mm x 30mm OD x 2.5mm Flat Washers |
| 1 | Passenger/Right Front Mounting Bracket | 8 | 10mm x 20mm OD x 2mm Flat Washers |
| 1 | Driver/Left Rear Mounting Bracket | 12 | 10mm Lock Washers |
| 1 | Passenger/Right Rear Mounting Bracket | 12 | 10mm Hex Nuts |
| 1 | Driver/Left Rear Support Bracket | 4 | 8-1.25mm x 25mm Hex Bolts |
| 1 | Passenger/Right Rear Support Bracket | 6 | 8mm x 24mm OD x 2mm Flat Washers |
| 2 | 10-1.50mm x 40mm Double Bolt Plates | 6 | 8mm Lock Washers |
| 2 | 10-1.50mm x 40mm T-Bolt Plates | 2 | 8mm Hex Nuts |
| 2 | 10-1.50mm x 40mm Bolt Plates | 2 | 6-1.0mm x 25mm Hex Bolts |
| 2 | 8-1.25mm x 30mm Rod Bolts | 2 | 6mm x 18mm OD x 1.6mm Flat Washers |
| 2 | 1/2"-13 x 2" Hex Bolts | 2 | 6mm Lock Washers |
| 2 | 1/2" x 1-1/2" OD x 1/8" Flat Washers | | |



INSTALLATION PROCEDURE

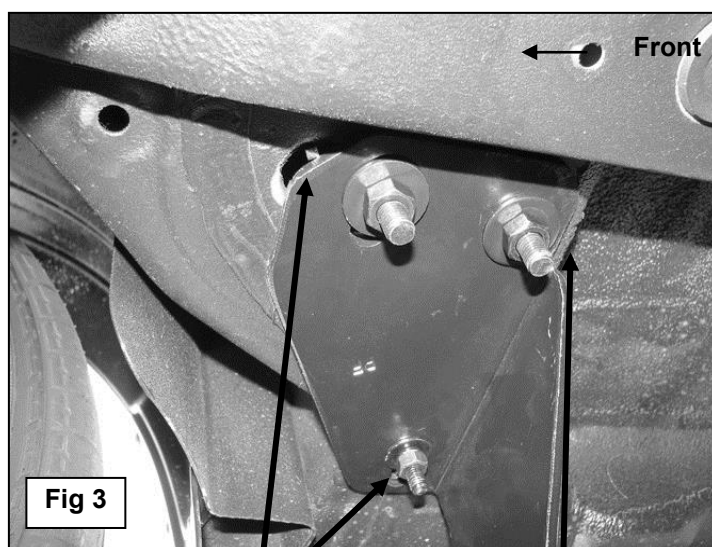
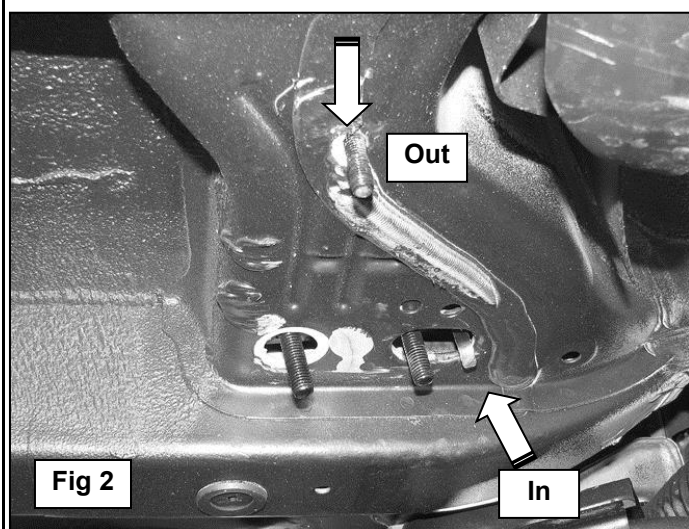
1. Starting at the front, passenger side of the vehicle, locate the oval and round holes in the floor panel next to the frame channel, **(Figure 1)**. Remove any rubber plugs covering the two openings. Locate the small 8mm hole in the floor. **NOTE:** The 8mm hole may be covered by sealant from the factory. Use a small screwdriver to clean the sealant from the hole, **(Figure 1)**.

Passenger Side Installation Pictured



Insert 8mm x 30mm Rod Bolt into oval hole and out small round hole (Pictured from below vehicle)

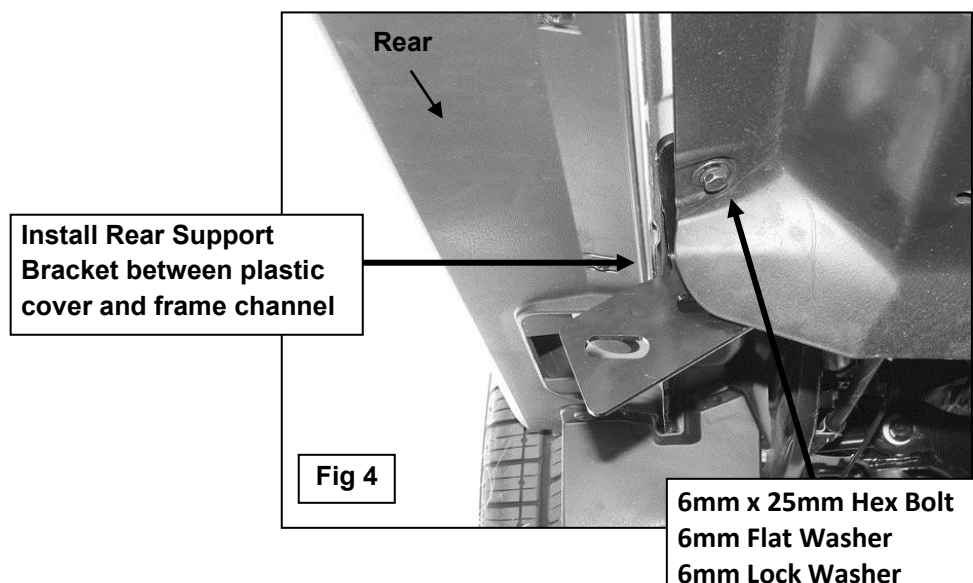
2. Insert the long 8mm x 30mm Rod Bolt, **(Figure 2)**, into the oval hole and out the smaller 8mm round hole. Select (1) 10mm Double Bolt Plate and insert it into the oval hole and out the remaining round hole, **(Figure 2)**. Locate the Passenger Side Front Frame Bracket. Hang the bracket from the 8mm Rod Bolt with (1) 8mm Flat Washer, (1) 8mm Lock Washer and (1) 8mm Hex Nut. Secure the Bracket to the Double Bolt Plate with the supplied (2) 10mm x 30mm x 2.5mm Large Flat Washers, (2) 10mm Lock Washers and (2) 10mm Hex Nuts, **(Figure 3)**. Snug but do not tighten hardware at this time.



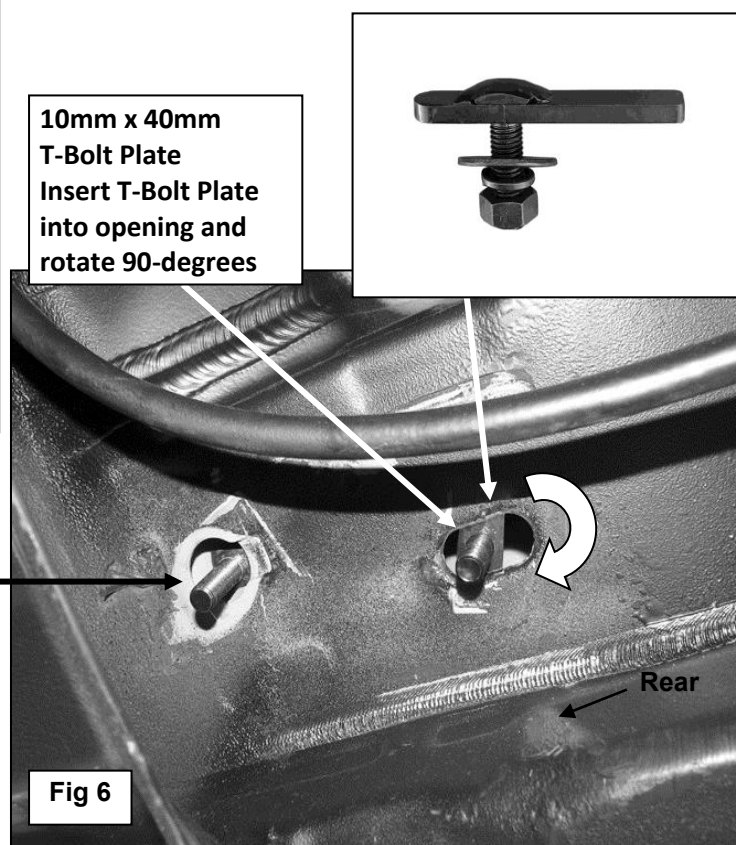
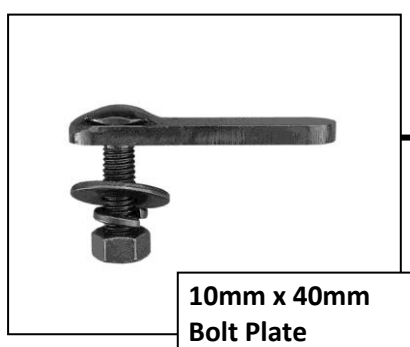
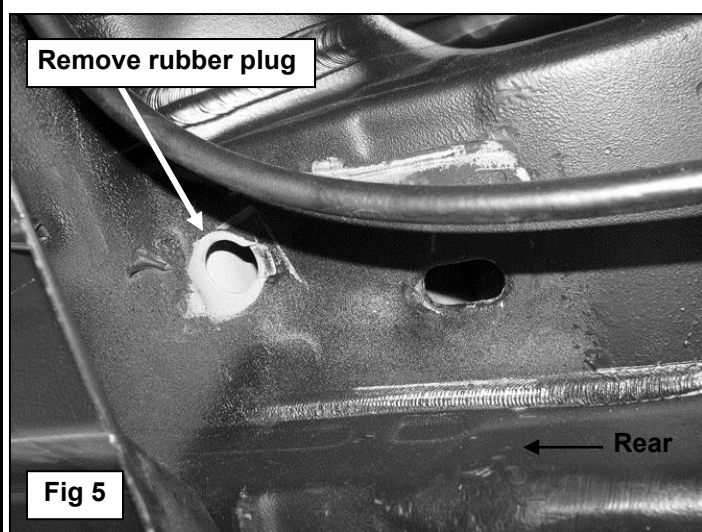
8mm Rod Bolt
8mm Flat Washer
8mm Lock Washer
8mm Hex Nut

10mm Double Bolt Plate
(2) 10mm Flat Washers
(2) 10mm Lock Washers
(2) 10mm Hex Nuts

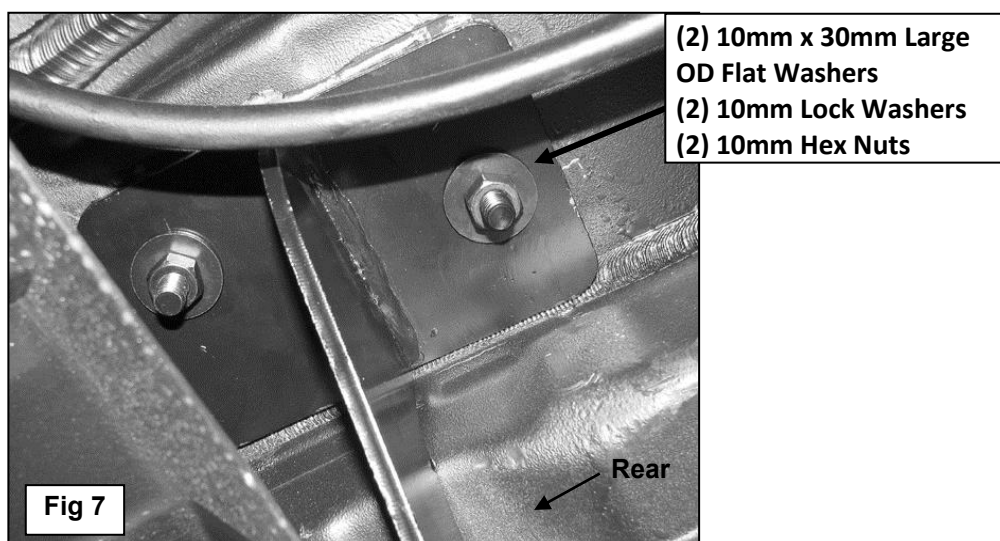
3. Moving toward the rear of the vehicle, remove the factory 6mm hex bolt securing the plastic cover to the floor channel. Select the Passenger Side Rear Support Bracket. Hold the Bracket up to the threaded hole in the floor channel and insert the included (1) 6mm x 25mm Hex Bolt with (1) 6mm Lock Washer and (1) 6mm Flat Washer through the plastic cover, the Support Bracket and into the floor channel, **(Figure 4)**. Do not tighten hardware at this time.



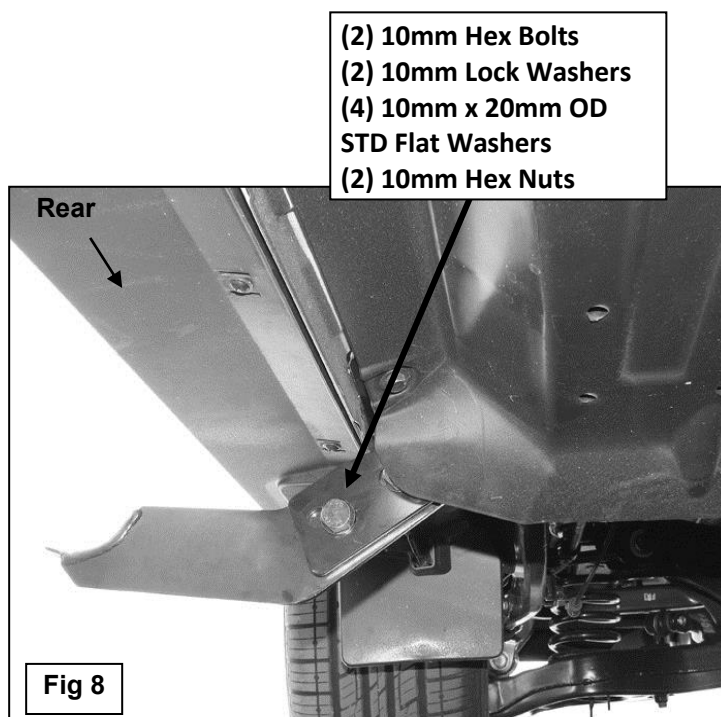
4. Locate the round and oval holes in the floor panel pictured in **Figure 5**. Remove the rubber plug from the round hole. Insert (1) 10mm Bolt Plate into the round opening. Insert (1) 10mm T-Bolt Plate into the oval opening, **(Figure 6)**. **IMPORTANT:** Rotate Bolt Plate 90-degrees to the direction of the oval opening, **(Figure 6)**.



5. Position the passenger side Rear Frame Bracket up to the vehicle and partially attach the Bracket to the (2) Bolt Plates inserted into the body panel. Secure using the included (2) 10mm x 30mm Large OD Flat Washers, (2) 10mm Lock Washers and (2) 10mm Hex Nuts, **(Figure 7)**. Snug but do not tighten hardware at this time.

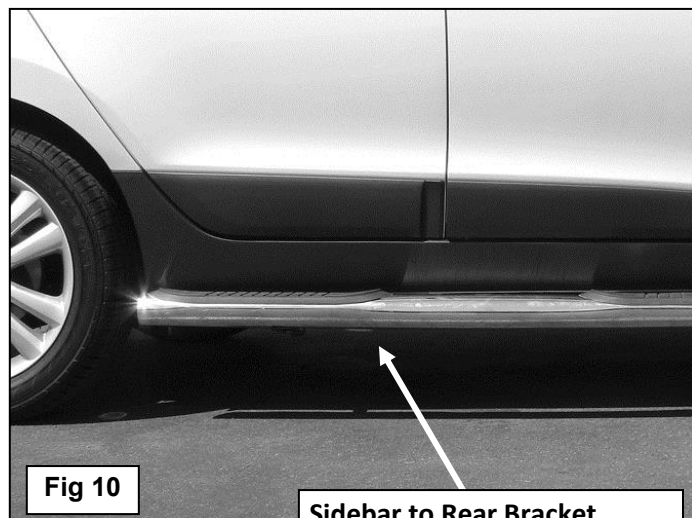
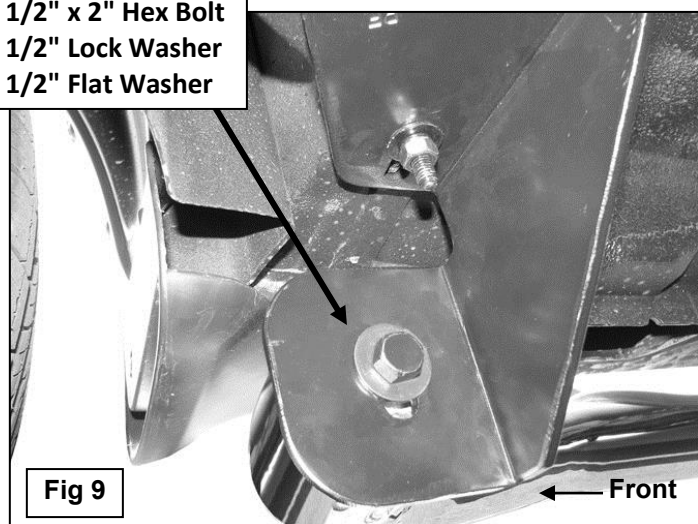


6. Line the mounting surface on the Support Bracket with the (2) holes in the Rear Mounting Bracket. Bolt the Support Bracket to the Mounting Bracket with the included (2) 10mm x 30mm Hex Bolts, (4) 10mm x 20mm STD Flat Washers, (2) 10mm Lock Washers and (2) 10mm Hex Nuts, **(Figure 8)**. Snug but do not tighten hardware at this time.

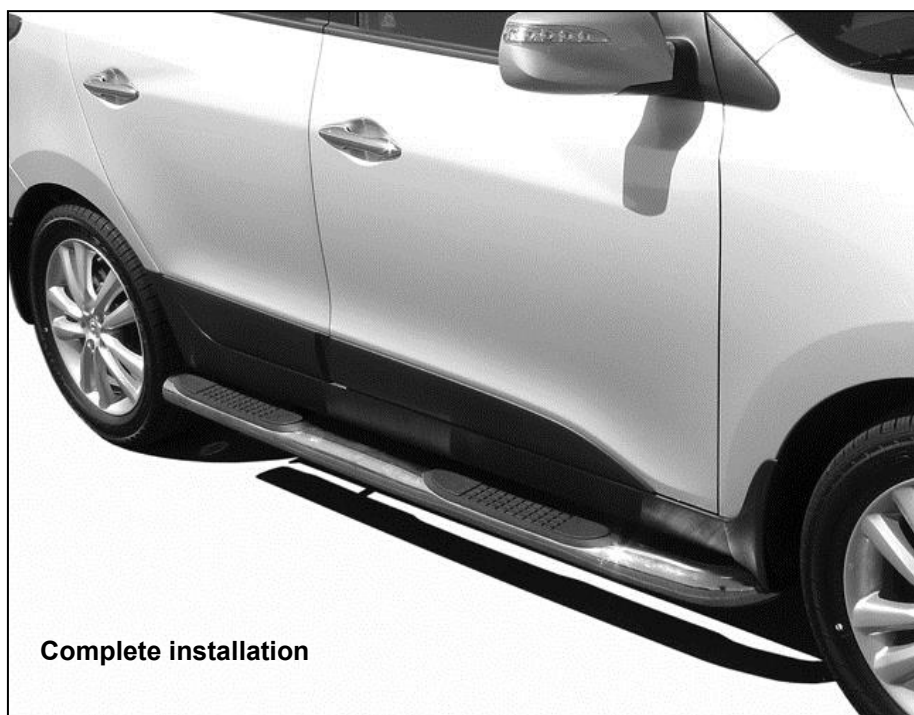


7. Carefully position the front of the passenger Sidebar up to Mounting Bracket and attach it using the included (1) 1/2" x 2" Hex Bolt, (1) 1/2" Lock Washer and (1) 1/2" Flat Washer, **(Figure 9)**. Leave hardware loose. Next, lift the Sidebar up to the rear Mounting Bracket and line up the (2) mounting holes. Bolt the Sidebar to the Bracket with (2) 8mm x 25mm Hex Bolts, (2) 8mm Flat Washers and (2) 8mm Lock Washers, **(Figure 10)**. Do not tighten hardware at this time.
8. Level and adjust Sidebar properly and tighten all hardware.
9. Repeat steps 1 - 8 for driver Sidebar installation.
10. Do periodic inspections of the installation to make sure that all hardware is secure and tight.

1/2" x 2" Hex Bolt
1/2" Lock Washer
1/2" Flat Washer



Sidebar to Rear Bracket
(2) 8mm x 25mm Hex Bolts
(2) 8mm Lock Washers
(2) 8mm Flat Washers



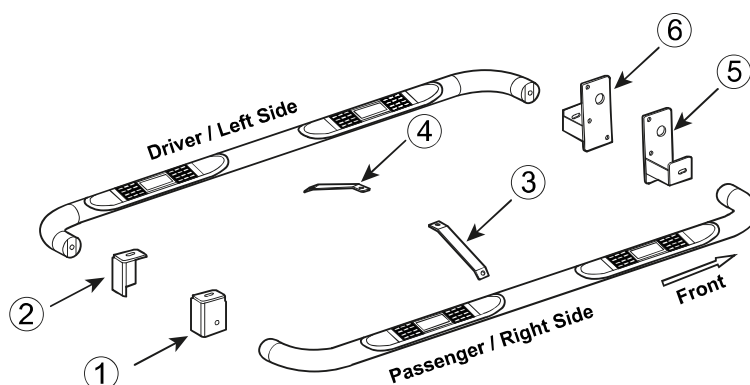
PARTS IDENTIFICATION GUIDE

Driver Side tube packed using "Green" color foam sheet. Passenger Side tube packed using "White" color foam sheet

| No. | Parts Identification |
|-----|--|
| 1 | Passenger / Right 'Rear' Bracket marked "PR" |
| 2 | Driver / Left 'Rear' Bracket marked "DR" |
| 3 | Passenger / Right 'Center' Bracket marked "PC" |
| 4 | Driver / Left 'Center' Bracket marked "DC" |
| 5 | Passenger / Right 'Front' Bracket marked "PF" |
| 6 | Driver / Left 'Front' Bracket marked "DF" |

Note:

- This guide is to identify the parts and not a reference for part count.
- Product / Bracket image is for representative purpose only.
- Actual design may vary based on application.
- Refer Installation Instructions for Hardware Kit detail.

**PRODUCT CARE**

- Periodically check the product to ensure all fasteners are tight and components are intact.
- Regular waxing is recommended to protect the finish of the product.
- **Use ONLY Non-Abrasive automotive wax.** Use of any soap, polish or wax that contains an abrasive is detrimental and can scratch the finish leading to corrosion.
- Aluminum polish may be used to polish small scratches and scuffs for **Stainless Steel finish.**
- Mild soap may be used to clean the product for both **Stainless Steel and Black finish.**

FAQ's

1. **Hardware's are not of correct size.**
In GMC / Chevrolet truck model 2006 & up, customer needs to reuse the factory body bolts to install the bracket. If your vehicle is not GMC / Chevrolet 2006 & up, please ensure that holes are not partially covered with any plastic grommet or rust? If it is, please remove the plastic grommet & rust from the thread holes & re-try the installation.
2. **Mounting Bracket are not getting Installed properly.**
In some cases Illustration images shown in Installation manual may not be the exactly same as per actual vehicle images ,also if Driver / Passenger side mounting brackets are very identical in the design, suggest referring Parts Identification guide to avoid fitment issue.
3. **Products are thumping / rattling after installation.**
Please ensure that all required mounting brackets / hardware's are installed & tighten correctly. Suggest using white lithium / regular grease between the metal to metal contact surfaces.
4. **Side Bar is not aligning with vehicle / Step Pads are not aligning with vehicle doors.**
Side bar may be interchanged or mounting brackets are not installed at the correct position in the vehicle. Please refer Parts identification guide.
5. **Missing / Excess Hardware.**
Recheck hardware count as per the part list.
6. **Product not installing properly.**
Ensure make model year, cab length and bed size of your vehicle is listed in the application. All installation steps are followed correctly.

Check out these other TrailFX Products!!

www.FX-Products.com

**BULL BARS****GRILLE GUARDS****BED RAILS****RUNNING BOARDS**

Keystone Automotive Operations Inc. (KAO) warrants this product to be free of defects in material and workmanship at the time of purchase by the original retail consumer. KAO disclaims any other warranties, express or implied, including the warranty of fitness for a particular purpose or an intended use. If the product is found to be defective, KAO may replace or repair the product at our option, when the product is returned prepaid, with proof of purchase. Alteration to, improper installation, or misuse of this product voids the warranty. KAO's liability is limited to repair or replacement of products found to be defective, and specifically excludes liability for any incidental or consequential loss or damage.