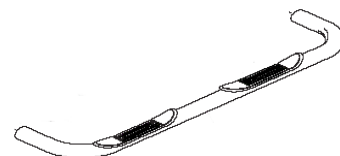




## 3" Nerf Bar

### Part No.1130373081/1130373083

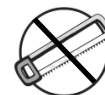


**Fits: 2008-2012**  
**2008-2011**  
**2008-2010**

**Ford Escape**  
**Mazda Tribute**  
**Mercury Mariner**



60-180 min



Cutting Not  
Required



Drilling Not  
Required



REMOVE CONTENTS FROM BOX. VERIFY ALL PARTS ARE PRESENT.



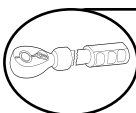
[support@trailfx.com](mailto:support@trailfx.com)



READ INSTRUCTIONS CAREFULLY BEFORE STARTING INSTALLATION.



1 866 638 4870



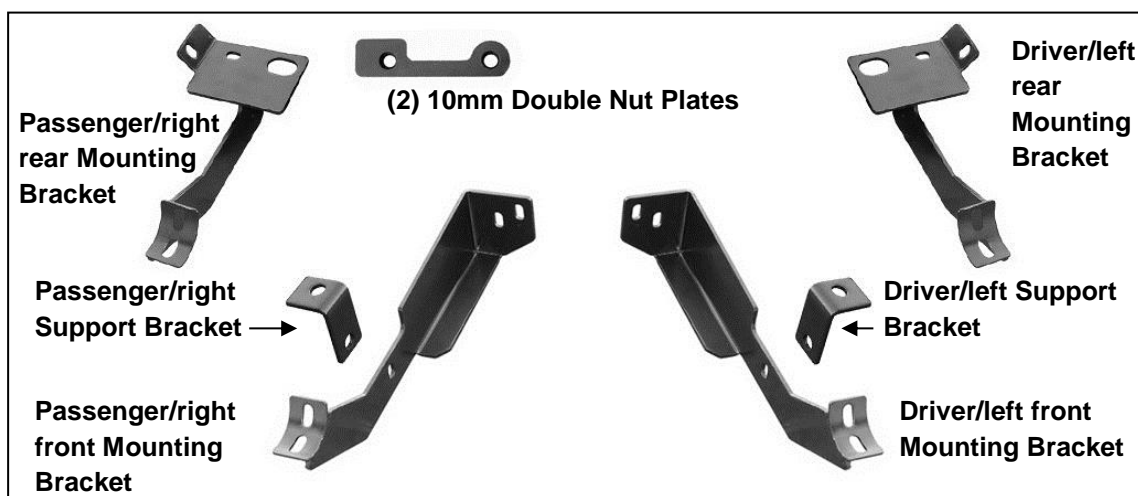
DO NOT OVER TORQUE. STANDARD OPERATING LOAD FOR TIGHTEN  
BODY MOUNT NUTS & BOLTS VARIES FROM 45 TO 65 FOOT POUND.



POLISHED STAINLESS STEEL – LIMITED LIFETIME  
POWDER COATED BLACK – 3 YEARS

#### PARTS LIST:

Qty	Part Description	Qty	Part Description
1	Driver/Left Sidebar	2	10-1.50mm x 40mm Bolt Plate
1	Passenger/Right Sidebar	2	10-1.50mm x 30mm Hex Bolts
1	Driver/Left Front Mounting Bracket	4	10-1.50mm x 45mm Hex Bolts
1	Passenger/Right Front Mounting Bracket	8	10mm ID x 30mm OD x 2.5mm Flat Washers
1	Driver/Left Rear Mounting Bracket	6	10mm Lock Washers
1	Passenger/Right Rear Mounting Bracket	2	10mm Hex Nuts
1	Driver/Left Front Support Bracket	2	10mm Nylon Lock Nuts
1	Passenger/Right Front Support Bracket	10	8-1.25mm x 25mm Hex Bolts
2	10mm Double Nut Plates	10	8mm Lock Washers
2	10mm ID x (35mm x 35mm) OD x 5mm Thick Square Washers	12	8mm ID x 24mm OD x 2mm Flat Washers



## INSTALLATION PROCEDURE:

**DO NOT ATTEMPT INSTALLATION ALONE; PERSONAL INJURY OR DAMAGE TO THE VEHICLE MAY RESULT.**

1. Starting the installation at the driver side-left front, remove the sheet metal screw in the rear of the front fender. Next, remove the three plastic clips from under the front of the plastic rocker trim panel, **(Figure 1)**. Once these are removed, gently pull the plastic panel toward the outside to locate the factory hole in the body panel, **(Figure 2)**. **NOTE:** Hold the front Mounting Bracket up in position to determine the approximate location of the correct mounting hole.
2. Mark the location of the factory hole onto the plastic rocker panel. Using a 7/16" drill bit, carefully drill through the marked location on the plastic panel, **(Figure 3)**. **IMPORTANT:** Only drill through the plastic panel. Take precautions to avoid damage to the vehicle.
3. Gently pull the cover aside to insert (1) 10mm x 40mm Bolt Plate into the factory hole in the body panel. Once the Bolt Plate is in place, reposition the plastic rocker panel over the Bolt Plate and into the original position, **(Figure 4)**. Secure with factory clips and metal screw.
4. Locate the three factory bolts on the side of the frame rail. Remove the two lower bolts only. Position the driver side front Mounting Bracket up to the frame rail. Line up the holes in the Mounting Bracket with (2) threaded holes. Secure the Mounting Bracket with the (2) factory bolts, **(Figure 5)**. Snug but do not tighten hardware at this time.
5. Place the Support Bracket onto the previously installed Bolt Plate using (1) 10mm Flat Washer, (1) 10mm Lock Washer and (1) 10mm Hex Nut. Attach the opposite end of the Support Bracket to the back of the Mounting Bracket with (1) 10mm x 30mm Hex Bolt, (2) 10mm Flat Washers and (1) 10mm Nylon Lock Nut, **(Figure 6)**. **NOTE:** Shorter tab on the Support Bracket mounts to the rocker panel, longer end to the Mounting Bracket. Do not tighten hardware at this time.
6. Moving to the rear of vehicle, locate the three holes in the floor panel next to the pinch weld. Remove the factory rubber plug if equipped, **(08 Escape only)**, facing the rear of the vehicle, **(Figure 7)**.
7. Insert (1) Double Nut Plate through the large round hole and line up the threaded nuts on the nut plate with the smaller round and oval holes, **(Figure 8)**. **NOTE:** Nut Plate must be flat against the inside of the body panel with the Welded nuts on top.
8. Position the driver side rear Mounting Bracket up to the vehicle. Insert (1) 10mm x 45mm Hex Bolt with (1) 10mm Flat Washer and (1) 10mm Lock Washer through the Mounting Bracket, small round hole and into the Double Nut Plate. Insert (1) 10mm x 45mm Hex Head Bolt, (1) 10mm Square Washer and (1) 10mm Lock Washer through the Mounting Bracket, large oval hole and into remaining nut in the Double Nut Plate, **(Figure 9)**. Do not tighten at this time.

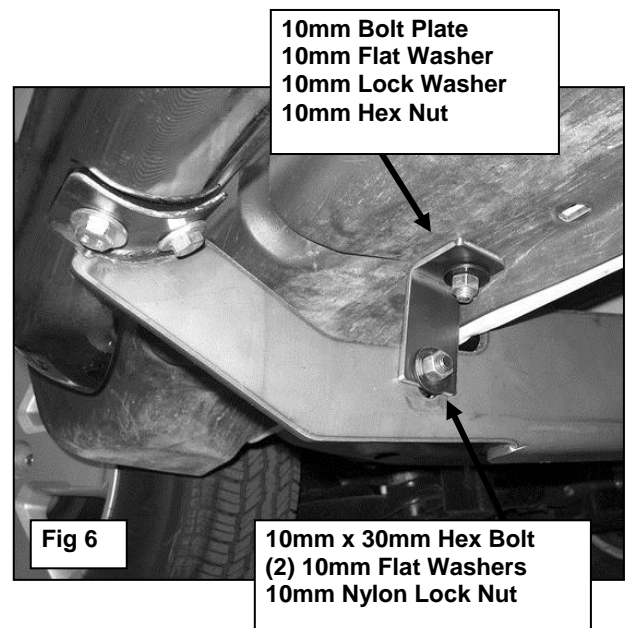
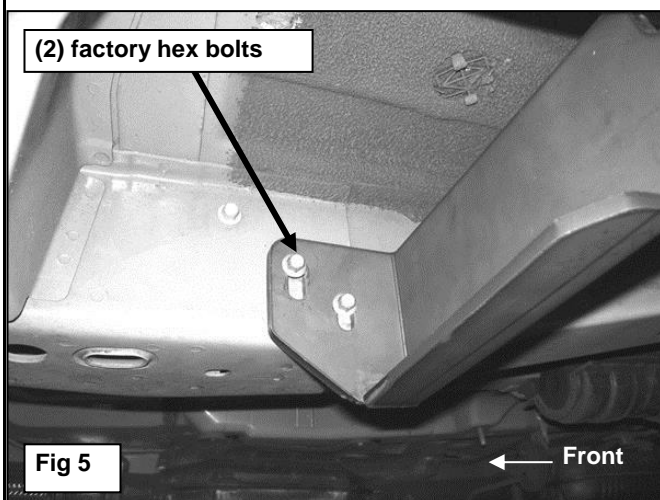
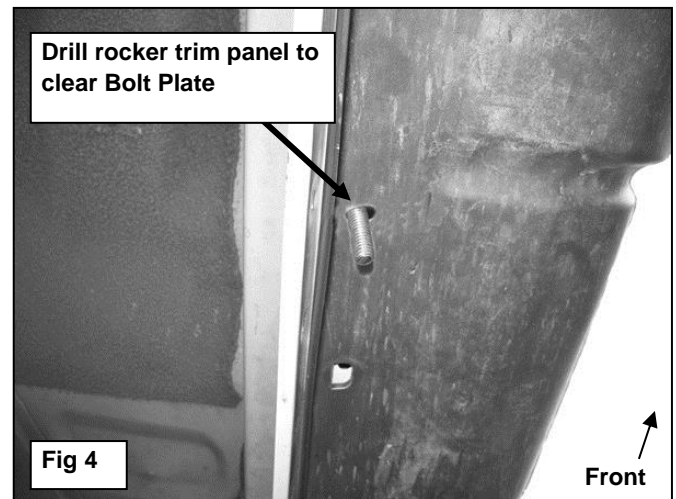
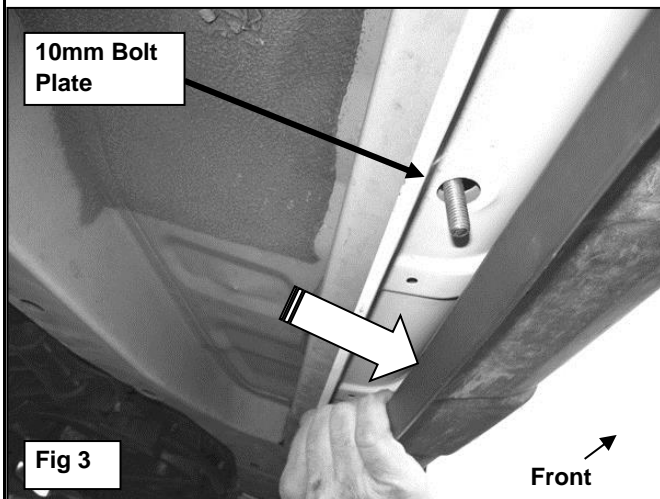
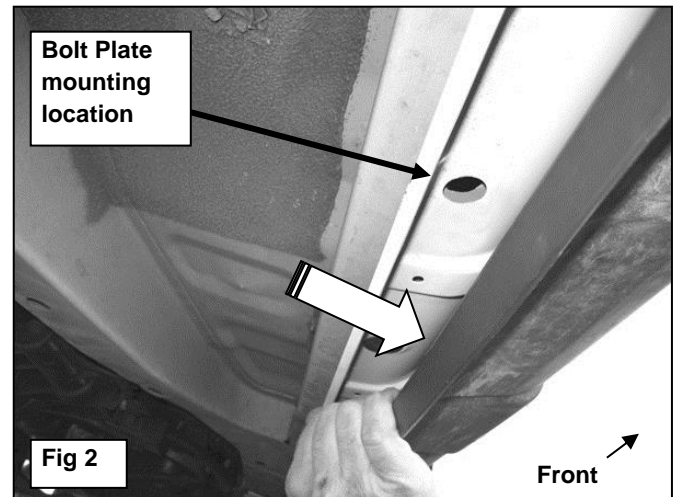
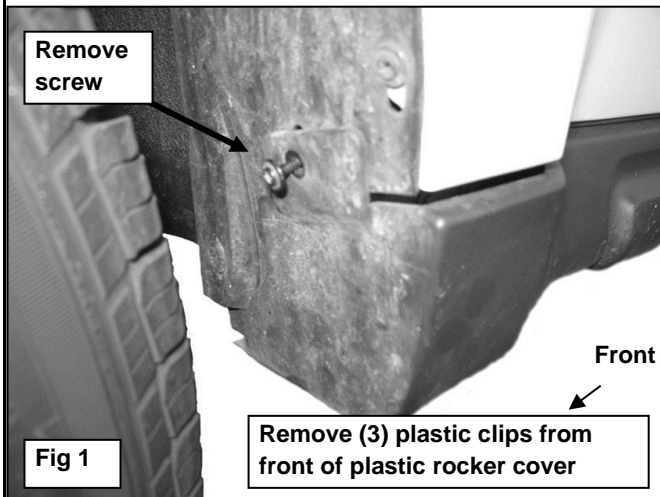
**2008 Escape driver side rear Mounting Bracket installation only:** Use (1) 8mm x 25mm Hex Head Bolt, (1) 8mm Flat Washer, and (1) 8mm Lock Washer to attach the driver side Mounting Bracket to previously removed rubber plug location. You will not be using this 8mm bolt on the driver side of the Mazda Tribute or 09 Escape.

9. Carefully position the driver Sidebar onto the Mounting Brackets and secure using (4) 8mm x 25mm Hex Head Bolts, (4) 8mm Flat Washers and (4) 8mm Lock Washers, **(Figure 11)**. Snug but do not tighten hardware at this time.
10. Adjust and level the Sidebar and tighten all hardware at this time.
11. Repeat Steps 2-11 for passenger/right Sidebar.

**2009-012 Escape and Tribute models only:** The passenger side rear Mounting Bracket installs between the factory exhaust support and the body panel. Remove the (2) 8mm hex bolts securing the bracket, move the exhaust support slightly and install the passenger side Mounting Bracket as per Step 9, **(see Figure 10)**. Reinstall the exhaust support using the factory hex bolts with (1) now inserted through the exhaust support and the Mounting Bracket. On the remaining top location, insert (2) 8mm Flat Washers between the body panel and the exhaust support to evenly space the support from the body panel. Tighten all hardware.

12. Do periodic inspections to the installation to make sure that all hardware is secure and tight.

## Driver Front Mounting Bracket Installation Pictured



## Driver Rear Mounting Bracket Installation Pictured

Remove rubber plug (08 Escape models only)

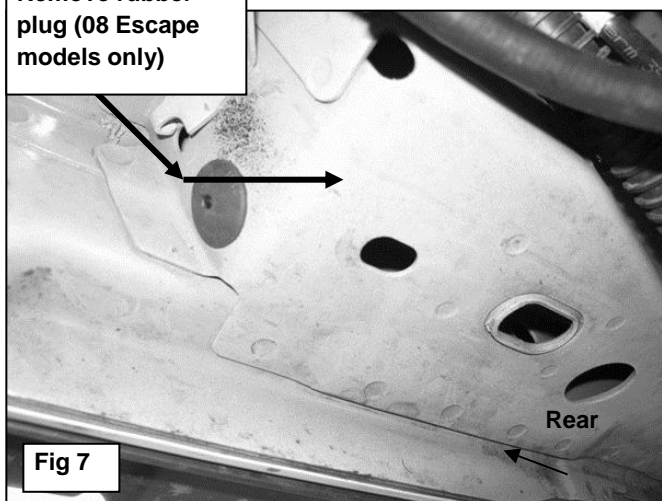


Fig 7

Insert Double Nut Plate and line up with (2) holes

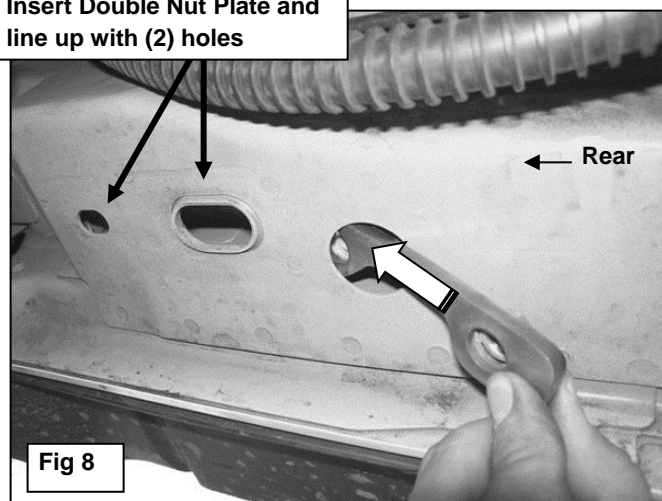


Fig 8

Driver side 08 Escape Only  
8mm x 25mm Hex Head Bolt  
8mm Lock Washer  
8mm Flat Washer

10mm x 45mm Hex Bolt  
10mm Lock Washer  
10mm Square Washer

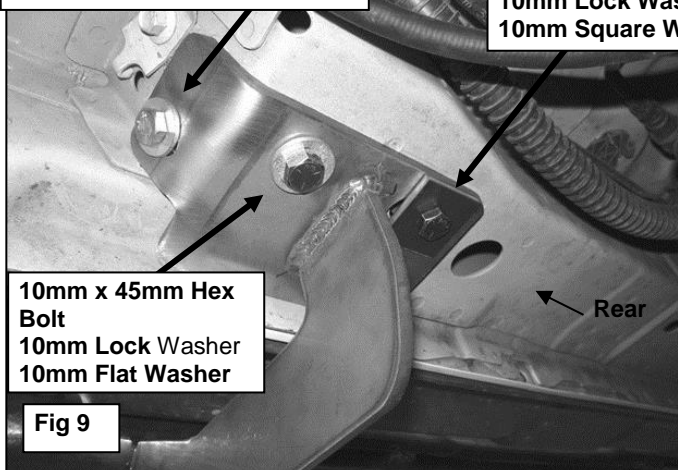


Fig 9

10mm x 45mm Hex Bolt  
10mm Lock Washer  
10mm Flat Washer

09-010 models-Insert (2) 8mm Flat Washers for spacer between exhaust support and body panel.

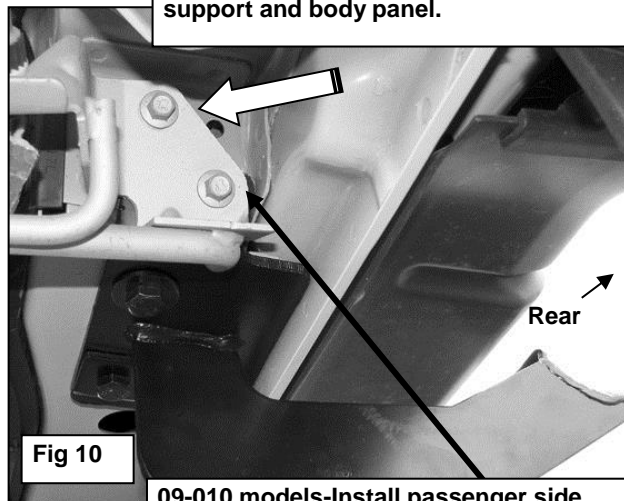


Fig 10

09-010 models-Install passenger side rear Mounting Bracket between exhaust support and body panel.

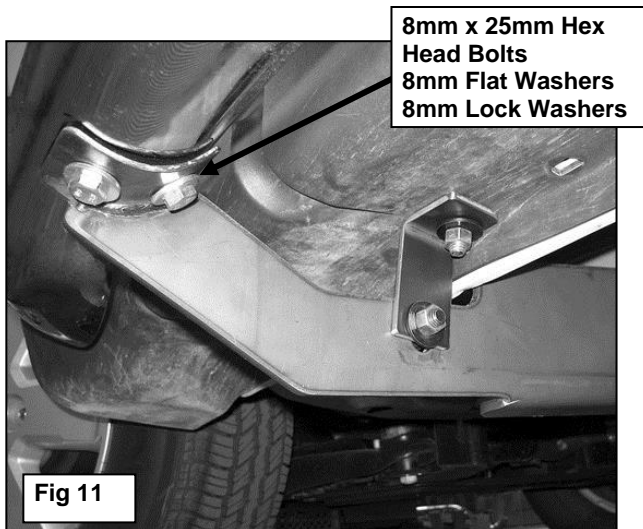
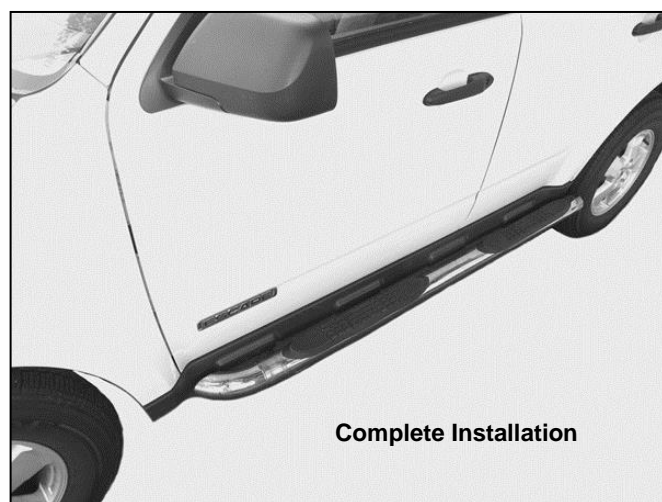


Fig 11

8mm x 25mm Hex Head Bolts  
8mm Flat Washers  
8mm Lock Washers



Complete Installation

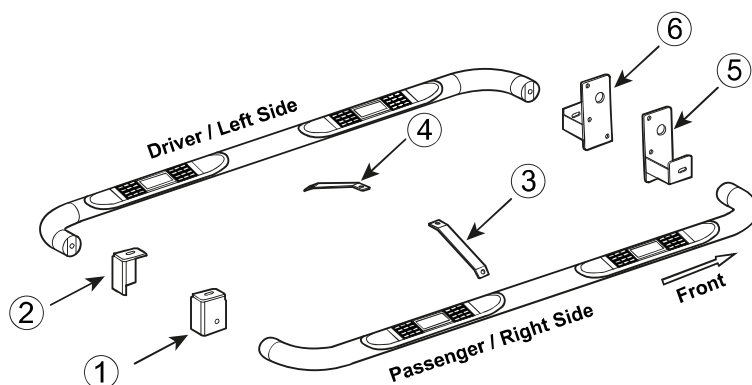
**PARTS IDENTIFICATION GUIDE**

**Driver Side tube packed using "Green" color foam sheet. Passenger Side tube packed using "White" color foam sheet**

No.	Parts Identification
1	Passenger / Right 'Rear' Bracket marked "PR"
2	Driver / Left 'Rear' Bracket marked "DR"
3	Passenger / Right 'Center' Bracket marked "PC"
4	Driver / Left 'Center' Bracket marked "DC"
5	Passenger / Right 'Front' Bracket marked "PF"
6	Driver / Left 'Front' Bracket marked "DF"

**Note:**

- This guide is to identify the parts and not a reference for part count.
- Product / Bracket image is for representative purpose only.
- Actual design may vary based on application.
- Refer Installation Instructions for Hardware Kit detail.

**PRODUCT CARE**

- Periodically check the product to ensure all fasteners are tight and components are intact.
- Regular waxing is recommended to protect the finish of the product.
- **Use ONLY Non-Abrasive automotive wax.** Use of any soap, polish or wax that contains an abrasive is detrimental and can scratch the finish leading to corrosion.
- Aluminum polish may be used to polish small scratches and scuffs for **Stainless Steel finish.**
- Mild soap may be used to clean the product for both **Stainless Steel and Black finish.**

**FAQ's****1. Hardware's are not of correct size.**

In GMC / Chevrolet truck model 2006 & up, customer needs to reuse the factory body bolts to install the bracket. If your vehicle is not GMC / Chevrolet 2006 & up, please ensure that holes are not partially covered with any plastic grommet or rust? If it is, please remove the plastic grommet & rust from the thread holes & re-try the installation.

**2. Mounting Bracket are not getting Installed properly.**

In some cases Illustration images shown in Installation manual may not be the exactly same as per actual vehicle images ,also if Driver / Passenger side mounting brackets are very identical in the design, suggest referring Parts Identification guide to avoid fitment issue.

**3. Products are thumping / rattling after installation.**

Please ensure that all required mounting brackets / hardware's are installed & tighten correctly. Suggest using white lithium / regular grease between the metal to metal contact surfaces.

**4. Side Bar is not aligning with vehicle / Step Pads are not aligning with vehicle doors.**

Side bar may be interchanged or mounting brackets are not installed at the correct position in the vehicle. Please refer Parts identification guide.

**5. Missing / Excess Hardware.**

Recheck hardware count as per the part list.

**6. Product not installing properly.**

Ensure make model year, cab length and bed size of your vehicle is listed in the application. All installation steps are followed correctly.

**Check out these other TrailFX Products!!**

**www.TrailFX.com**



Keystone Automotive Operations Inc. (KAO) warrants this product to be free of defects in material and workmanship at the time of purchase by the original retail consumer. KAO disclaims any other warranties, express or implied, including the warranty of fitness for a particular purpose or an intended use. If the product is found to be defective, KAO may replace or repair the product at our option, when the product is returned prepaid, with proof of purchase. Alteration to, improper installation, or misuse of this product voids the warranty. KAO's liability is limited to repair or replacement of products found to be defective, and specifically excludes liability for any incidental or consequential loss or damage.