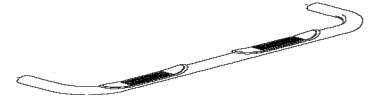




3" Side Bar

Part No. 1112145101/1112145103



Fits: 2010 - 2017
2010 - 2017

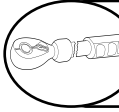
Chevrolet Equinox
GMC Terrain



REMOVE CONTENTS FROM BOX. VERIFY ALL PARTS ARE PRESENT.



READ INSTRUCTIONS CAREFULLY BEFORE STARTING INSTALLATION.



DO NOT OVER TORQUE. STANDARD OPERATING LOAD FOR TIGHTEN BODY MOUNT NUTS & BOLTS VARIES FROM 45 TO 65 FOOT POUND.



60-180 min



Cutting Not Required



Drilling Not Required



support@trailfx.com



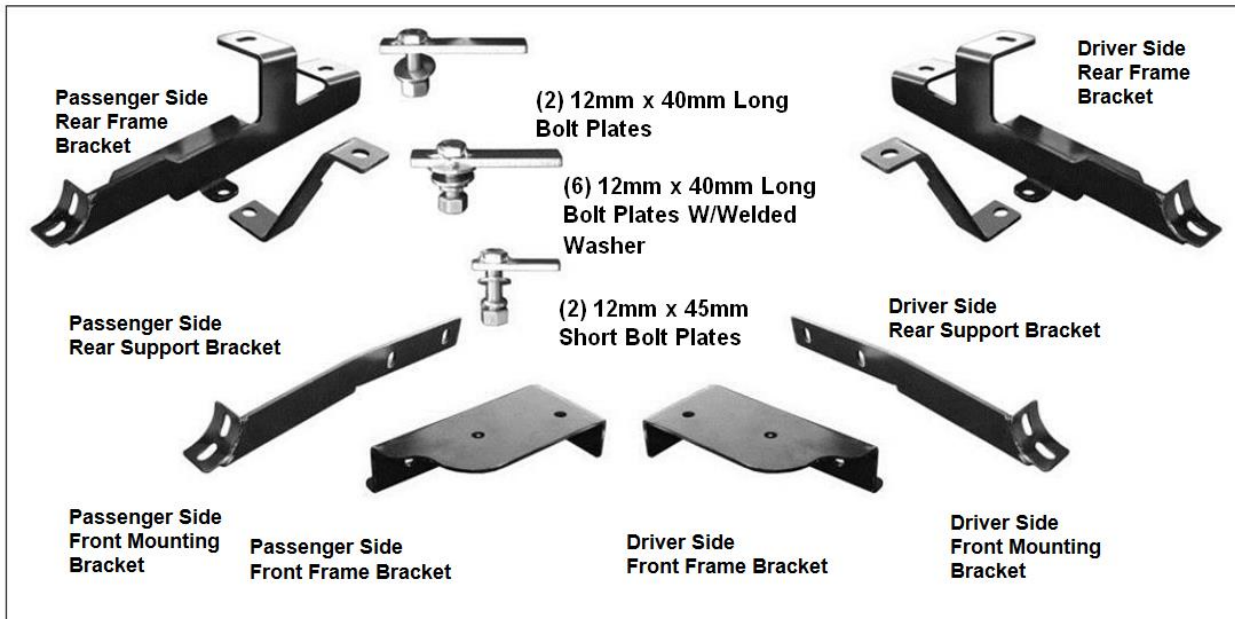
1 866 638 4870



POLISHED STAINLESS STEEL - LIMITED LIFETIME
POWDER COATED BLACK - 3 YEARS

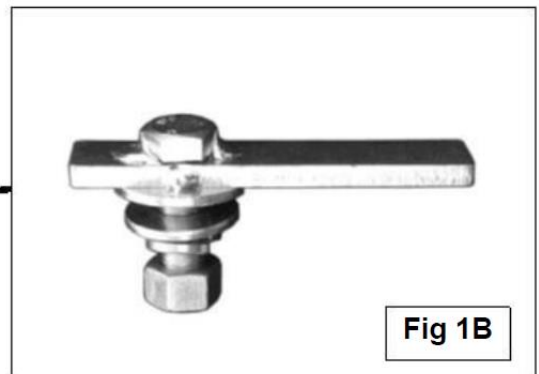
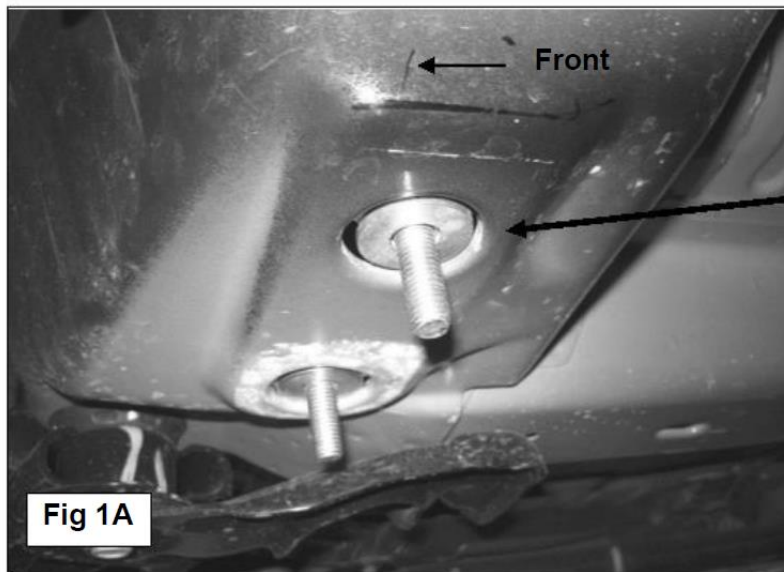
PARTS LIST:

Qty	Part Description	Qty	Part Description
1	Driver/Left Sidebar	4	12-1.75mm x 35mm Hex Bolts
1	Passenger/Right Sidebar	8	12mm x 32mm OD x 3mm Flat Washers
1	Driver/Left Front Frame Bracket	10	12mm x 24mm OD x 2.5mm Flat Washers
1	Passenger/Right Front Frame Bracket	14	12mm Lock Washers
1	Driver/Left Front Sidebar Mounting Bracket	14	12mm Hex Nuts
1	Passenger/Right Front Sidebar Mounting Bracket	2	10-1.50mm x 35mm Hex Bolts
1	Driver/Left Rear Frame Mounting Bracket	4	10mm x 20mm OD x 2mm Flat Washers
1	Passenger/Right Rear Frame Mounting Bracket	2	10mm Lock Washers
1	Driver/Left Rear Support Bracket	2	10mm Hex Nuts
1	Passenger/Right Rear Support Bracket	8	8-1.25mm x 25mm Hex Bolts
6	12-1.75mm x 40mm Long Bolt Plates (with welded washer)	8	8mm ID x 24mm OD x 2mm Flat Washers
2	12-1.75mmx45mm Short Bolt Plates	8	8mm Lock Washers
2	12-1.75mmx40mm Long Bolt Plates		



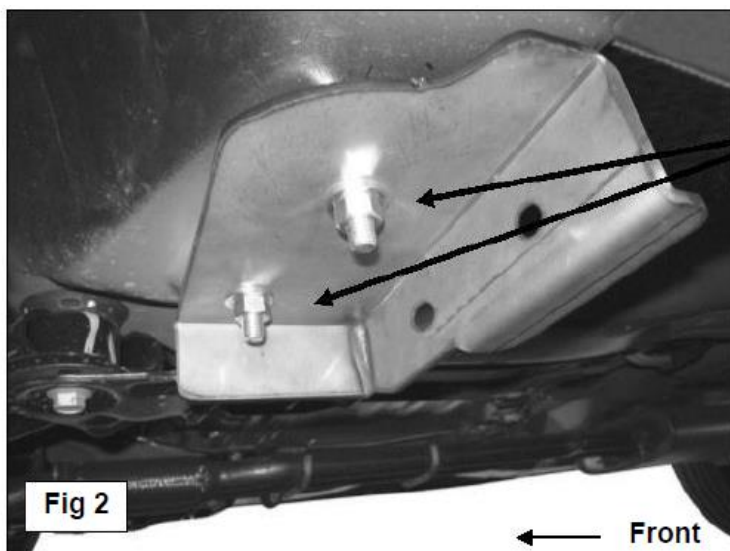
INSTALLATION PROCEDURE:

- Starting at the driver side-front of the vehicle, locate the two factory holes in the floor panel by the front tires. Insert (1) 12mm x 40mm Bolt Plate W/Washer into each of the factory holes **IMPORTANT!** Once you have inserted the Bolt Plates, make sure that the welded washer on each Bolt Plate is in the center of the factory hole, (**Figure 1A & 1B**).

Driver Side Installation Pictured

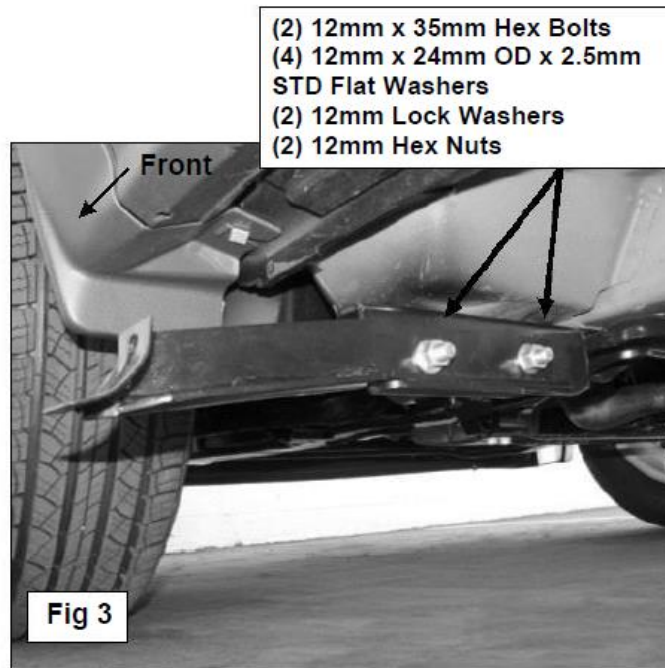
Insert Bolt Plates (with welded-on washer) into openings in floor panel. Center washer in opening.

- Select the driver side front Frame Bracket and hang it from the (2) previously installed Bolt Plates using the included (2) 12mm x 32mm OD x 3mm Large Flat Washers, (2) 12mm Lock Washers and (2) 12mm Hex Nuts. Snug but do not tighten hardware at this time, (Figure 2). **NOTE:** When tightening the Bolt Plates, make sure that the welded-on washers are fully seated in the large openings in the floor at all times.

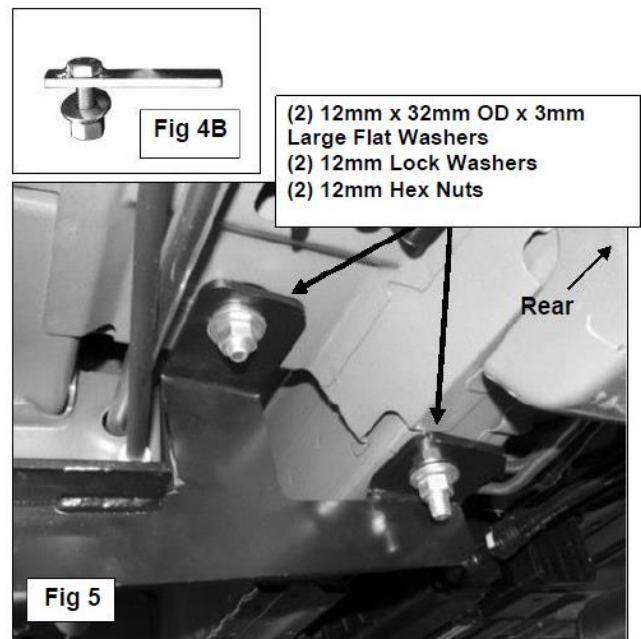
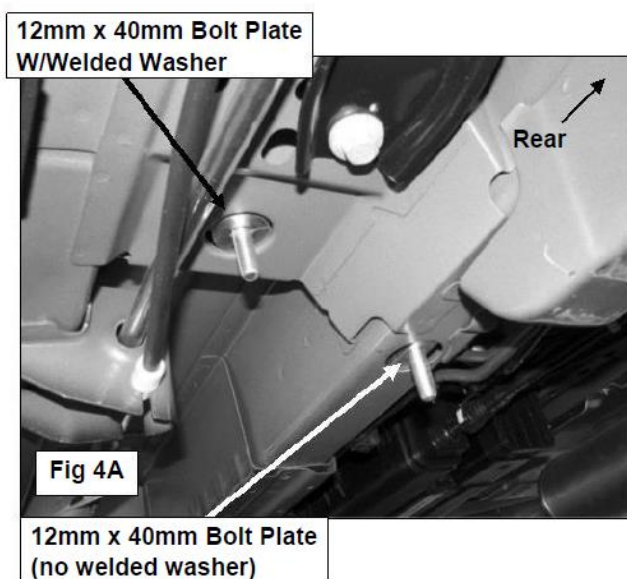


(2) 12mm x 40mm Bolt Plates
W/Welded Washers
(2) 12mm x 32mm OD x 3mm
Large Flat Washers
(2) 12mm Lock Washers
(2) 12mm Hex Nuts

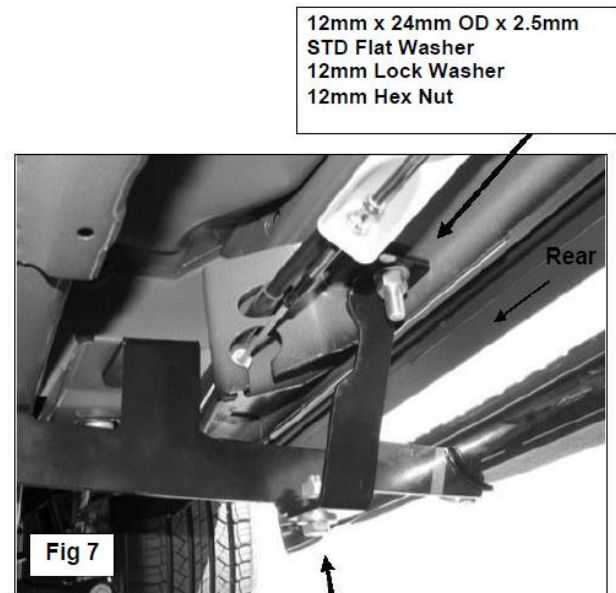
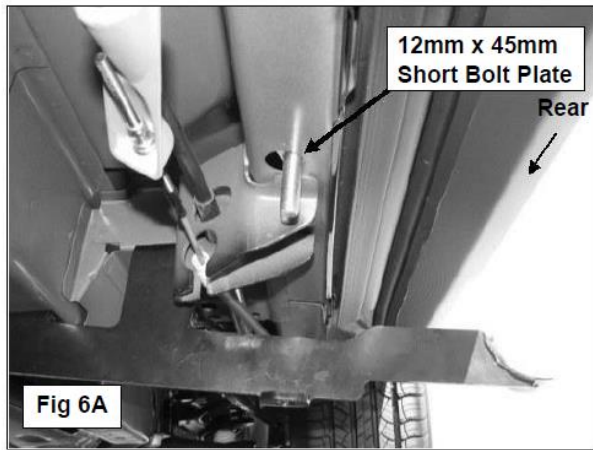
- Bolt the driver side Mounting Bracket to the front Frame Bracket using the included (2) 12mm x 35mm Hex Bolts, (4) 12mm 24mm x 2.5mm STD Flat Washers, (2) 12mm Lock Washers and (2) 12mm Hex Nuts, (Figure 3). Snug but do not tighten hardware at this time.



4. Move to the driver side rear of the vehicle and locate the factory hole (1) in the bottom of the suspension mount and the hole (1) in the bottom of the inner frame channel, (Figure 4A). Select (1) 12mm x 40mm Bolt Plate W/Washer and insert it into the large hole in the suspension mount. Select (1) 12mm x 40mm Long Bolt Plate, (no washer) and insert it into the hole in the bottom of the frame channel, (Figure 4A & 4B). Hang the driver side Rear Mounting Bracket from the (2) Bolt Plates with (2) 12mm x 32mm Large Flat Washers, (2) 12mm Lock Washers and (2) 12mm Hex Nuts, (Figure 5). Snug but do not tighten hardware at this time.

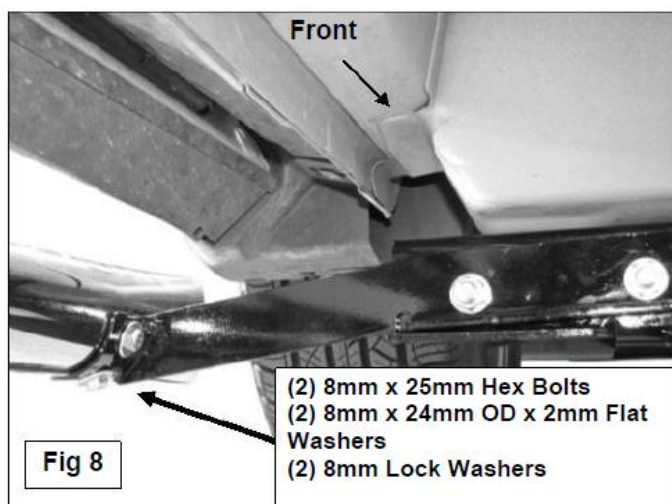


5. Next, insert (1) 12mm x 45mm Small Bolt Plate into the hole in the bottom of the rocker panel, (Figure 6A & 6B). Select the driver side Rear Support Bracket. Hang the Support Bracket from the Small Bolt Plate with (1) 12mm x 24mm STD Flat Washer, (1) 12mm Lock Washer and (1) 12mm Hex Nut, (Figure 7). Line up the lower hole in the Support Bracket with the bottom of the tab on the rear Mounting Bracket. Bolt the Support Bracket to the Mounting Bracket with (1) 10mm x 35mm Hex Bolt, (2) 10mm Flat Washers, (1) 10mm Lock Washer and (1) 10mm Hex Nut, (Figure 7). Snug all hardware but do not fully tighten at this time.



10mm x 35mm Hex Bolt
(2) 10mm x 20mm OD x 2mm Flat Washers
10mm Lock Washer
10mm Hex Nut

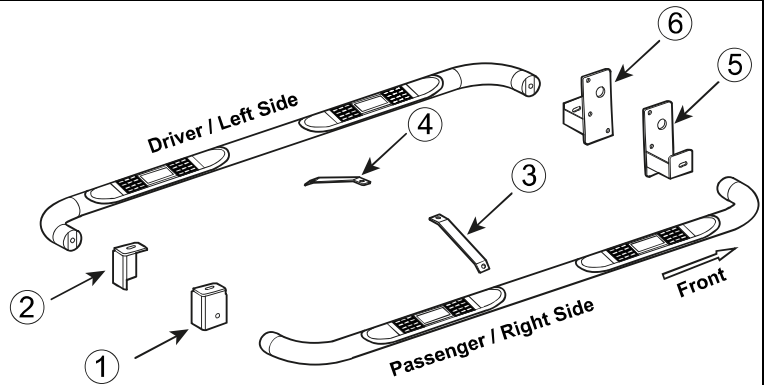
6. Carefully position the driver Sidebar onto the Mounting Brackets and attach it using the included (4) 8mm x 25mm Hex Bolts, (4) 8mm Lock Washers and (4) 8mm Flat Washers, (Figure 8). Do not tighten hardware at this time.
7. Align and adjust the Sidebar properly and fully tighten all hardware. **IMPORTANT:** Before tightening the front Support Bracket and the rear Mounting Bracket to vehicle, make sure that Bolt Plates are in the center of the holes in the vehicle.
8. Repeat steps 1 – 7 for passenger Sidebar installation.
9. Do periodic inspections to the installation to make sure that all hardware is secure and tight.



PARTS IDENTIFICATION GUIDE

Driver Side tube packed using "Green" color foam sheet. Passenger Side tube packed using "White" color foam sheet

No.	Parts Identification
1	Passenger / Right 'Rear' Bracket marked "PR"
2	Driver / Left 'Rear' Bracket marked "DR"
3	Passenger / Right 'Center' Bracket marked "PC"
4	Driver / Left 'Center' Bracket marked "DC"
5	Passenger / Right 'Front' Bracket marked "PF"
6	Driver / Left 'Front' Bracket marked "DF"

**Note:**

- This guide is to identify the parts and not a reference for part count.
- For part count, refer Parts List.
- Product / Bracket image is representative and actual design may vary.

PRODUCT CARE

- Periodically check the product to ensure all fasteners are tight and components are intact.
- Regular waxing is recommended to protect the finish of the product.
- **Use ONLY Non-Abrasive automotive wax.** Use of any soap, polish or wax that contains an abrasive is detrimental and can scratch the finish leading to corrosion.
- Aluminum polish may be used to polish small scratches and scuffs for **Stainless Steel finish.**
- Mild soap may be used to clean the product for both **Stainless Steel and Black finish.**

FAQ's**1. Hardware's are not of correct size.**

In GMC / Chevrolet truck model 2006 & up, customer needs to reuse the factory body bolts to install the bracket. If your vehicle is not GMC / Chevrolet 2006 & up, ensure that holes are not partially covered with any plastic grommet or rust? If it is, remove the plastic grommet & rust from the thread holes & re-try the installation.

2. Mounting Bracket are not getting Installed properly.

In some cases Illustration images shown in Installation manual may not be the exactly same as per actual vehicle images ,also if Driver / Passenger side mounting brackets are very identical in the design, suggest referring Parts Identification guide to avoid fitment issue.

3. Products are thumping / rattling after installation.

Ensure that all required mounting brackets / hardware's are installed & tighten correctly. Suggest using white lithium / regular grease between the metal to metal contact surfaces.

4. Side Bar is not aligning with vehicle / Step Pads are not aligning with vehicle doors.

Side bar may be interchanged or mounting brackets are not installed at the correct position in the vehicle. Refer Parts identification guide.

5. Missing / Excess Hardware.

Recheck hardware count as per the part list.

6. Product not installing properly.

Ensure make model year, cab length and bed size of your vehicle is listed in the application. All installation steps are followed correctly.

Check out these other TrailFX Products!!

www.TrailFX.com

**BULL BAR****GRILLE GUARDS****BED RAILS****RUNNING BOARDS**

Keystone Automotive Operations Inc. (KAO) warrants this product to be free of defects in material and workmanship at the time of purchase by the original retail consumer. KAO disclaims any other warranties, express or implied, including the warranty of fitness for a particular purpose or an intended use. If the product is found to be defective, KAO may replace or repair the product at our option, when the product is returned prepaid, with proof of purchase. Alteration to, improper installation, or misuse of this product voids the warranty. KAO's liability is limited to repair or replacement of products found to be defective, and specifically excludes liability for any incidental or consequential loss or damage.