



A4 ALUMINIUM STEP BAR Part No. AL4007B



Fits: 2009-2018 DODGE RAM 1500 QUAD CAB



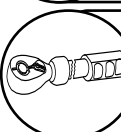
INCLUDING. 2019-2020 RAM 1500 CLASSIC



REMOVE CONTENTS FROM BOX. VERIFY ALL PARTS ARE PRESENT.



READ INSTRUCTIONS CAREFULLY BEFORE STARTING INSTALLATION.



DO NOT OVER TORQUE. STANDARD OPERATING LOAD FOR
TIGHTENING BODY MOUNT NUTS & BOLTS VARIES FROM 7 TO 8.5
FOOT POUND FOR M6 AND 18 TO 20 FOOT POUND FOR M8 HARDWARE



120 mins



Cutting Not
Required



Drilling Maybe
Required



support@trailfx.com



1 - (866) 638 - 4870



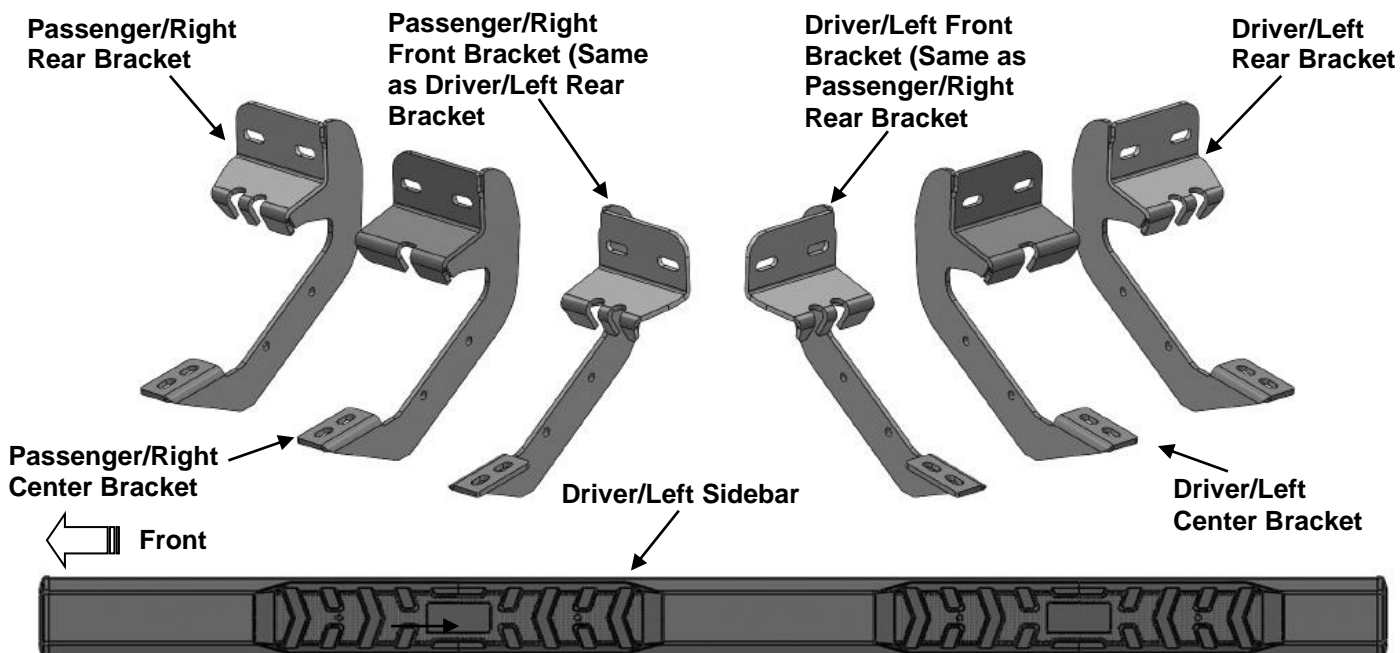
POWDER COATED BLACK - LIMITED LIFETIME

PARTS LIST:

Qty	Part Description	Qty	Part Description
1	Driver/Left A4 Step Bars	24	8mm x 24mm OD x 2mm Flat Washers
1	Passenger/Right A4 Step Bars	24	8mm Lock Washers
2	Driver/Left Front/Passenger/Right Rear Mounting Brackets	18	8mm Hex Nuts
2	Driver/Left Rear/Passenger/Right Front Mounting Brackets	6	8mm Plastic Retainers
1	Driver/Left Center Mounting Bracket	10	6mm x 25mm Button Head Bolts
1	Passenger/Right Center Mounting Bracket	20	6mm x 18mm OD x 1.6mm Flat Washers
6	Plastic Covers	10	6mm Serrated Flange Nuts
12	Plastic Clips	4	16mm x 60mm Spacer Plates
12	8mm x 30mm Hex Bolts	2	16mm x 34mm Spacer Plates
12	8mm x 20mm T-Bolts	1	4mm Hex Wrench
6	8-1.25mm x 30mm Bolt/nut Plates		

REPLACEMENT PARTS LIST (NOT INCLUDED IN BOX)

1	Step Pad Pack (Includes clips) - G9029	1	End Caps Pack - G9030
1	Bracket Cover Pack - G9031		



PROCEDURE: REMOVE CONTENTS FROM BOX. VERIFY ALL PARTS ARE PRESENT. READ INSTRUCTIONS CAREFULLY BEFORE STARTING INSTALLATION. DRILLING MAY BE REQUIRED.

1. Starting at the passenger side-front of the vehicle, remove the sealing tape covering the factory holes in the side of the inner panel, **(Figure 1)**.
2. Determine the correct procedure to attach the driver side front Bracket for your model/year:

Models without factory threaded inserts in body panel:

- a. Select (1) 8mm Bolt/nut Plate, **(Figure 2)**. Partially thread an 8mm Hex Bolt onto the threaded end of the Nut Plate, **(Figure 3)**. Thread the Hex Bolt in until it is flush with the welded nut. Use the Hex Bolt as a handle and insert the Bolt and Nut Plate into the oval hole, **(Figure 4)**. Feed the threaded bolt on the Bolt Plate through one of the hex shaped factory holes.
- b. Thread (1) 8mm Plastic Retainer onto the threaded end and down tight against the body panel, **(Figure 5)**. **NOTE:** The Plastic Retainer is designed to keep the Bolt/Nut Plate from falling into the body panel and to aid in Bracket installation.
- c. Select the Passenger/right Front Bracket, **(Figure 6)**. Attach the Bracket to the threaded end of the Bolt Plate with (1) 8mm Flat Washer, (1) 8mm Lock washer and (1) 8mm Hex Nut, **(Figure 7)**. **IMPORTANT:** Passenger/right Front Bracket is the same as the Driver/left Center and Rear Brackets. Do not tighten hardware at this time.
- d. Remove the 8mm Hex Bolt from the nut on the Bolt Plate from **Step 3a**. Rotate the Bolt on the Bolt Plate until the threaded nut lines up with the remaining hole in the Mounting Bracket and body panel, **(Figure 7)**. Attach the Bracket to the threaded Nut Plate with (1) 8mm x 30mm Hex Bolt, (1) 8mm Lock Washer and (1) 8mm Flat Washer, **(Figure 7)**. Do not tighten hardware.

Models with factory threaded inserts:

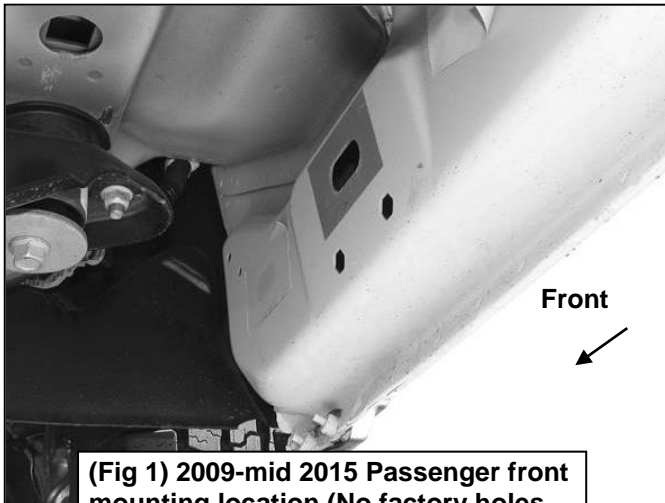
- a. Attach the Passenger/right Front Bracket to the threaded inserts with (2) 8mm x 30mm Hex Bolts, (2) 8mm Lock Washers and (2) 8mm Flat Washer, **(Figures 8 & 9)**. Leave hardware loose at this time.
3. Next, attach the Bracket to the back of the pinch weld with (2) 6mm Button Head Bolts, (4) 6mm Flat Washers, (1) 16mm x 60mm Spacer Plate and (2) 6mm Flange Nuts, **(Figure 10)**. Do not fully tighten hardware at this time. **IMPORTANT:** 2009-12 models not equipped with factory holes will require drilling through the pinch weld to fully attach Bracket. Do not drill through pinch weld at this time, **(see Step 8)**.
4. Select (1) Plastic Bracket Cover and (2) Retaining Clips. Slide the Cover over the passenger/right front Bracket. Line up the (2) mounting holes in the Cover with the holes in the Bracket. Insert the Clip into the holes and push center pin to expand Clip, **(Figure 11)**. Repeat this Step for all Cover installations.
5. Move along the side of the body panel to the center mounting location, **(Figure 12)**. Repeat the appropriate **Steps 1—4** to install the Passenger/Right Center Bracket. **IMPORTANT:** The Center Mounting Bracket will use the 16mm x 34mm Spacer Plate.
6. Move to the rear location, **(Figure 13)**. Repeat **Step 5** to install the Rear Mounting Bracket. Leave hardware loose.
7. Select the Passenger/Right A4 Step Bar. Insert (6) T-Bolts into the bottom of the Sidebar, (3) per channel, **(Figure 14)**. Attach the Sidebar to the (3) Brackets with (6) 8mm Flat Washers, (6) 8mm Lock Washers and (6) 8mm Hex Nuts, **(Figure 15)**. Do not fully tighten at this time.
8. Properly level and adjust the Sidebar and fully tighten all hardware.

2009-12 models requiring drilling through pinch trim:

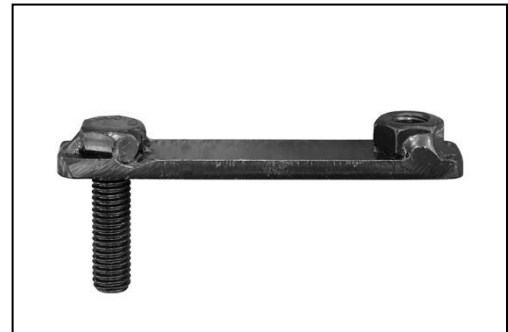
- a. Level the Sidebar to the vehicle. Make sure all (3) Brackets are tight against the bottom of the body panel and tighten all mounting hardware.
- b. Mark the location of the slots onto the pinch weld.
- c. Drill (2) 1/4" holes through the pinch weld for each Bracket. **IMPORTANT:** Do not drill too close to the bottom edge of the pinch weld. Drill the holes in the center of the marked slots.
- d. Repeat **Step 3** to attach the Brackets to the drilled holes in the pinch weld. Check for level then fully tighten all hardware.
9. Repeat **Steps 1—8** for driver/left Sidebar installation.
10. Do periodic inspections to the installation to make sure that all hardware is secure and tight.

To protect your investment, Do not use any type of polish or wax that may contain abrasives that could damage the finish. Mild soap may be used to clean the Sidebars.

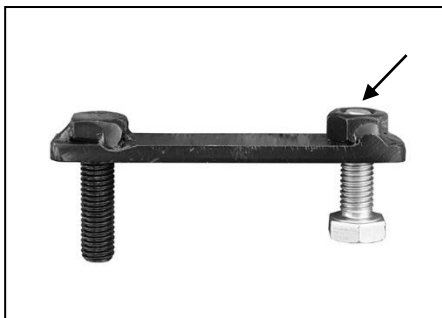
Passenger Side Installation Pictured



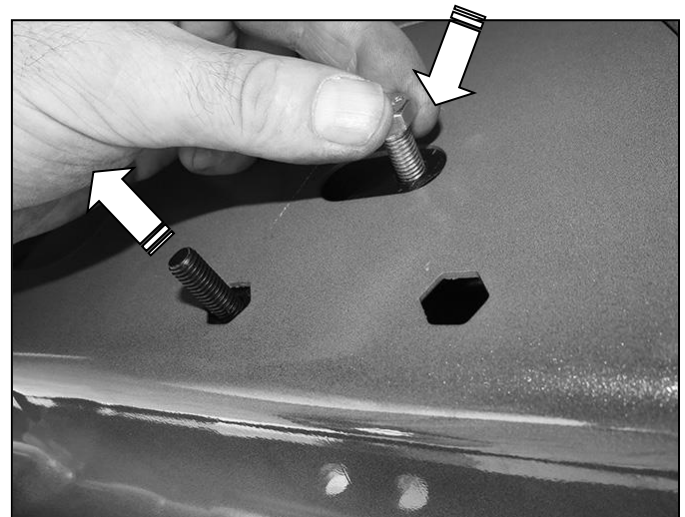
(Fig 1) 2009-mid 2015 Passenger front mounting location (No factory holes in pinch weld 2009-2012 models)



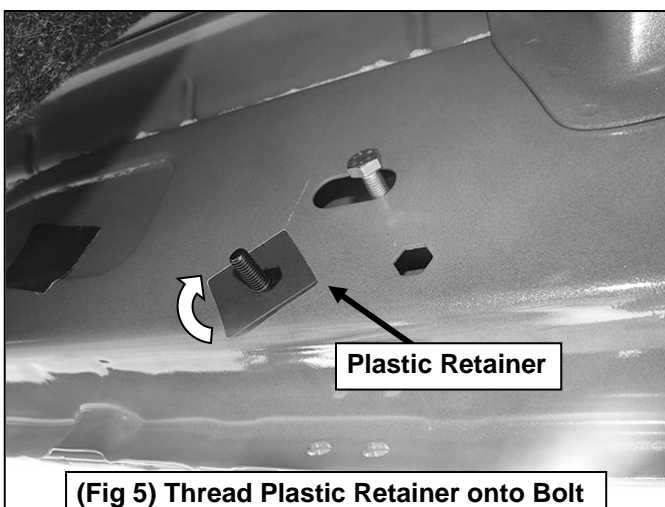
(Fig 2) 8mm Bolt-8mm Nut Plate, NOTE: 8mm Bolt-Nut Plate is not required on models with threaded inserts



(Fig 3) Thread (1) 8mm Hex Bolt into the nut on the plate. Stop when bolt reaches end of nut as pictured

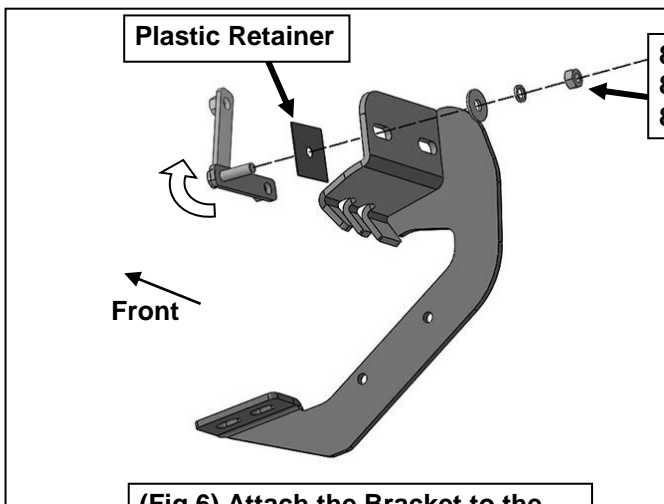


(Fig 4) Use the loose Hex Bolt as a handle. Insert the Bolt Plate into the oval hole and feed the threaded end out either factory hex shaped hole. IMPORTANT: Do not let go of the hex bolt until after Plastic Retainer has been threaded onto bolt (Fig 5)

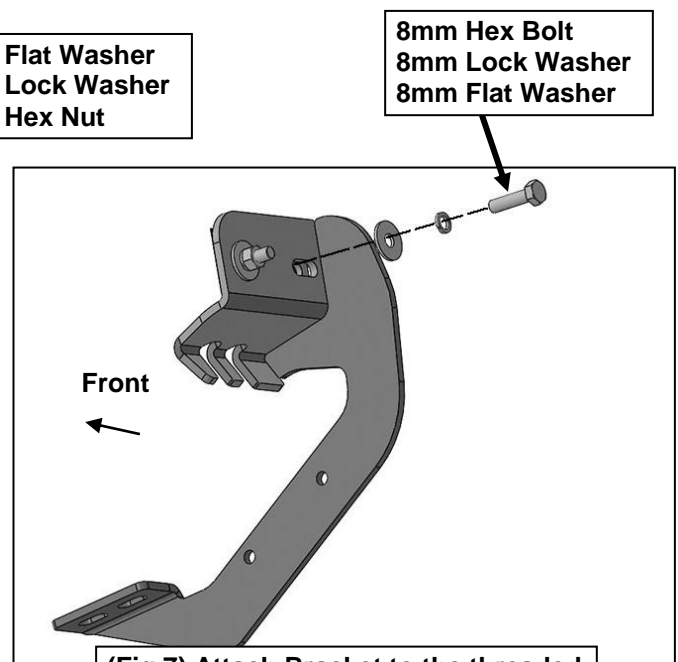


(Fig 5) Thread Plastic Retainer onto Bolt Plate to hold Bolt Plate in position.

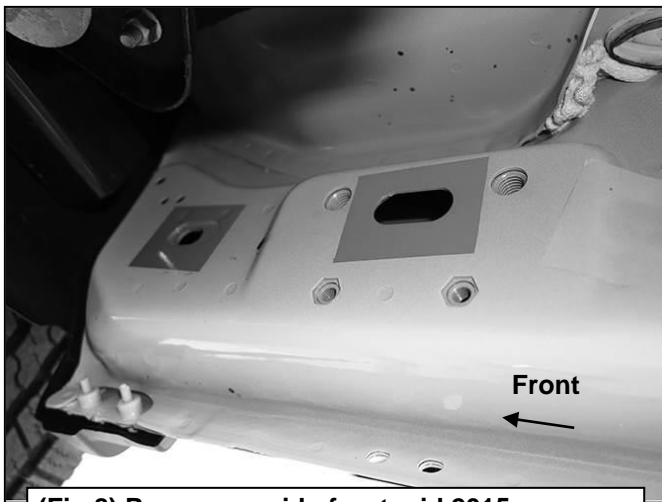
Passenger Side Installation Pictured



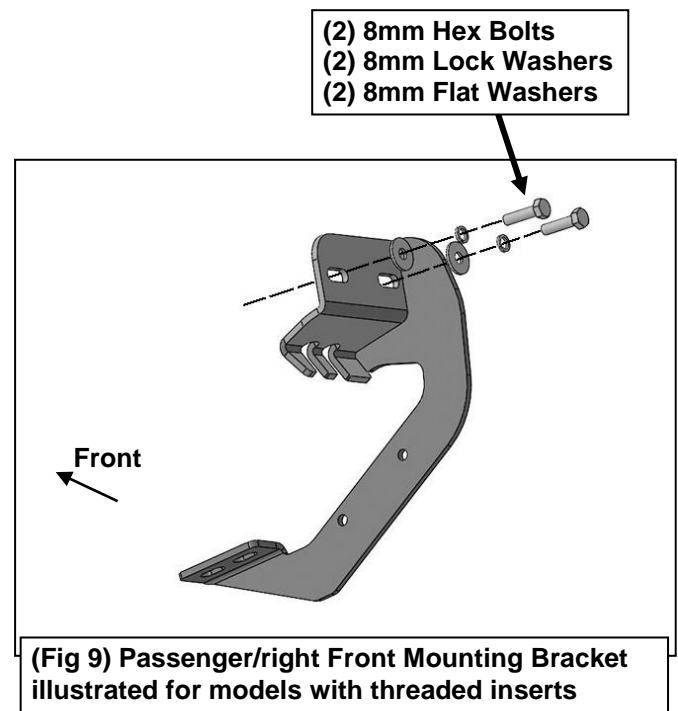
(Fig 6) Attach the Bracket to the threaded bolt on the Bolt/Nut Plate



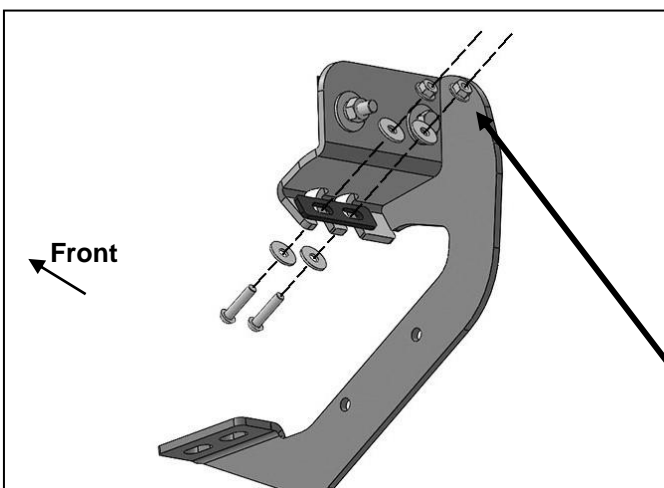
(Fig 7) Attach Bracket to the threaded hole in the Bolt/Nut Plate



(Fig 8) Passenger side front mid 2015-on, models with factory installed threaded inserts



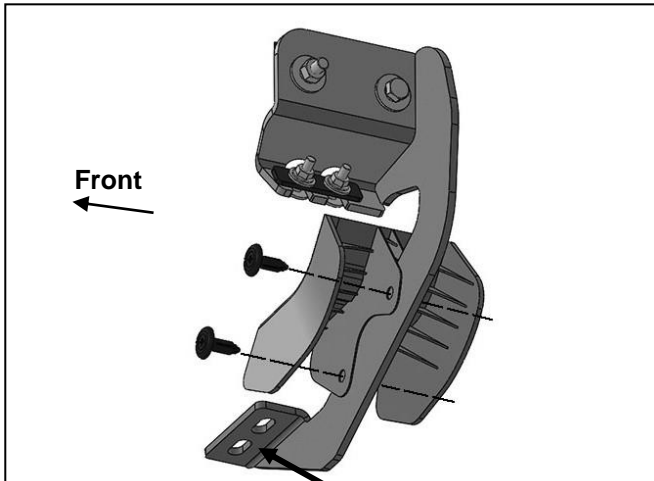
(Fig 9) Passenger/right Front Mounting Bracket illustrated for models with threaded inserts



(Fig 10) Attach Bracket to back of pinch weld (models with factory holes in pinch weld only)

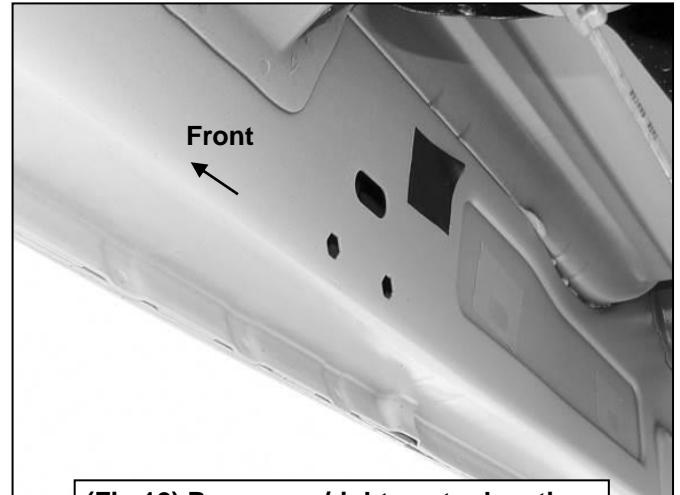
- (2) 6mm Button Bolts
(4) 6mm Flat Washers
16mm x 60mm Spacer
(2) 6mm Flange Nuts

Passenger Side Installation Pictured

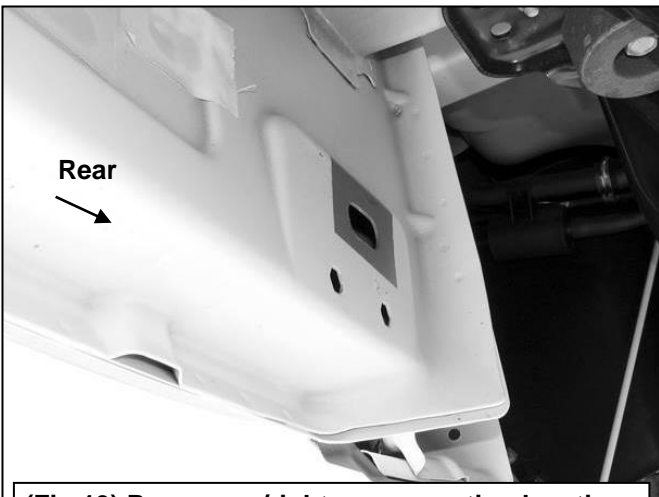


(Fig 11) Slide Cover over top of Bracket. Attach Cover to Bracket with (2) Retaining Clips

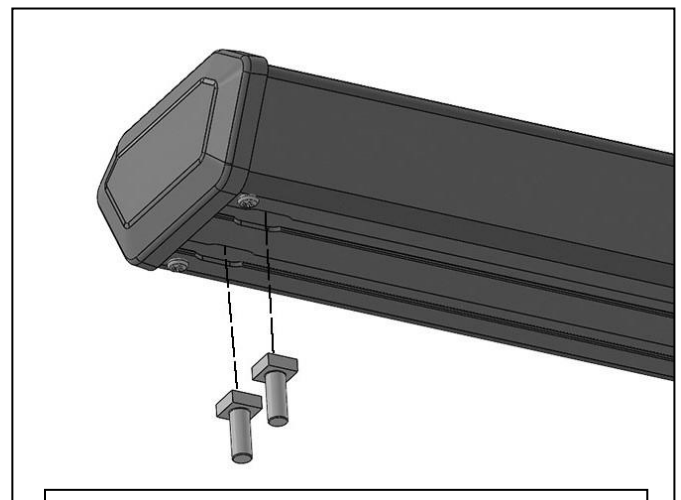
IMPORTANT: 2009-2012 models without holes in pinch weld will require drilling 1/4" holes through pinch weld to attach bracket. Do complete installation of sidebars first, level sidebar before drilling holes for bracket.



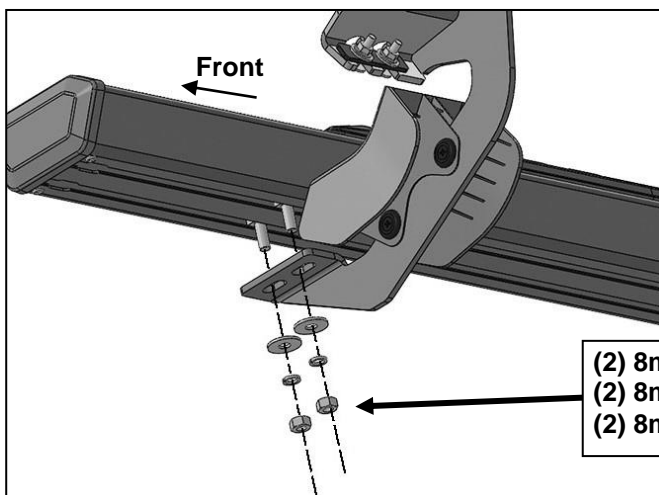
(Fig 12) Passenger/right center location



(Fig 13) Passenger/right rear mounting location



(Fig 14) Insert (6) T-Bolts into the channels in the bottom of the Sidebar, (3) per channel



(2) 8mm Flat Washers
(2) 8mm Lock Washers
(2) 8mm Hex Nuts

(Fig 15) Attach the Passenger/Right A4 Step Bar to the Mounting Brackets

PRODUCT CARE

- Periodically check the product to ensure all fasteners are tight and components are intact.
- For cleaning, use mild soap and warm water with a soft cloth or brush to prevent scratching.

FAQ's**1. Hardware and mounting brackets are not aligning properly**

Ensure that hardware is being used on the correct side of the vehicle. In some cases, the hardware may appear same for driver or passenger side but may alter the alignment of mounting location. Check mounting brackets for both sides.

2. Step Bar is not aligning with vehicle / doors

Step bars may be interchanged or reversed (Driver / Passenger Side). Check step bar for each side as well ensure the proper hardware has been used for each side.

3. Products are thumping / rattling after installation.

Ensure that all required mounting brackets / hardware's are installed & tighten correctly. Suggest using white lithium / regular grease between metal to metal contact.

4. Missing / Excess Hardware.

Recheck hardware count as per the part list.

5. Product not installing properly.

Ensure the Year / Make / Model as well as cab and bed dimensions are correct for the application. Review all steps for installation to ensure they were followed correctly.

6. Who should be contacted for questions regarding product / installation assistance?

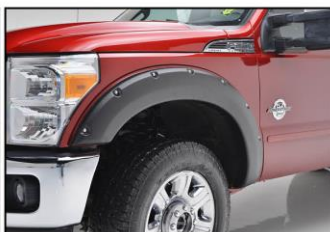
www.trailfx.com / support@trailfx.com 1-(866) 638-4870

Check out these other TrailFX Products!

www.trailfx.com



HOOD PROTECTOR



FENDER FLARES



TONNEAU COVER



BED LINERS

Keystone Automotive Operations Inc. (KAO) warrants this product to be free of defects in material and workmanship at the time of purchase by the original retail consumer. KAO disclaims any other warranties, express or implied, including the warranty of fitness for a particular purpose or an intended use. If the product is found to be defective, KAO may replace or repair the product at our option, when the product is returned prepaid, with proof of purchase. Alteration to, improper installation, or misuse of this product voids the warranty. KAO's liability is limited to repair or replacement of products found to be defective, and specifically excludes liability for any incidental or consequential loss or damage.