



Full Length Hoop Step

Part No. A3329



Fits: 2015 - Current

Chevrolet Silverado 2500/3500 Single Wheel Crew Cab 8'5 Bed

2015 - Current

GMC Sierra 2500/3500 Single Wheel Crew Cab 8' Bed



REMOVE CONTENTS FROM BOX. VERIFY ALL PARTS ARE PRESENT.



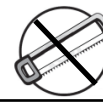
READ INSTRUCTIONS CAREFULLY BEFORE STARTING INSTALLATION.



DO NOT OVER TORQUE. STANDARD OPERATING LOAD FOR TIGHTEN BODY MOUNT NUTS & BOLTS VARIES FROM 45 TO 65 FOOT POUND.



30-40 min



Cutting Not
Required



Drilling Not
Required



support@trailfx.com



1 866 638 4870



POLISHED STAINLESS STEEL – LIMITED LIFETIME
POWDER COATED BLACK – 3 YEARS

Bolt Kit

PARTS LIST:

Qty	Part Description	Qty	Part Description
12	M8-1.25 x 25mm Hex Bolts	18	Fender Washers
6	M8-1.25 Hex Nuts	2	M8-1.25 Clips

Tools Needed

Screwdriver	13mm socket wrench
3/8" Ratchet	Torque wrench
13mm wrench	

INSTALLATION PROCEDURE:

Step 1. Locate the driver's side step. This can be accomplished by laying both steps below the driver's side of the vehicle. Once you have them in place, you will see that the driver's side step will have each entry step located toward the forward half of each door opening. NOTE: For bed step models, entry steps are the longer steps.

Step 2. With the correct step placed on each side of the vehicle, take note of where the brackets are located. Look under the vehicle and locate the factory supplied mounting positions. NOTE: Some vehicles require the use of supplied clips and nuts.

Step 3. If the vehicle requires use of clips, install those now. This requires the removal of a plastic body plug. Use a screwdriver to remove each plug, and install the clips as shown in figure 1.

Step 4. Align the steps with the mounting holes. Beginning at the front, use (1) M8-1.25 bolt and (1) fender washer for each mounting location and thread the bolts into the mounting holes. NOTE: Some vehicles require the use of an additional nut and washer for the lower portion of the mounting bracket as shown in figure 2. Nuts and washers are supplied.

Step 5. After final positioning, begin at the front of the vehicle and tighten the lower bolt on each bracket to 15 - 20 ft./lb. of torque. Continue this until all of the lower bolts have been tightened. Continue by tightening all of the upper mounting bolts.

Step 6. Repeat steps 1 - 5 on the passenger's side. This concludes the installation.

COMPLATE INSTALLATIONS



PRODUCT CARE

- Periodically check the product to ensure all fasteners are tight and components are intact.
- Regular waxing is recommended to protect the finish of the product.
- **Use ONLY Non-Abrasive automotive wax.** Use of any soap, polish or wax that contains an abrasive is detrimental and can scratch the finish leading to corrosion.
- Aluminum polish may be used to polish small scratches and scuffs for **Stainless Steel finish.**
- Mild soap may be used to clean the product for both **Stainless Steel and Black finish.**

FAQ's**1. Hardware's are not of correct size.**

In GMC / Chevrolet truck model 2006 & up, customer needs to reuse the factory body bolts to install the bracket. If your vehicle is not GMC / Chevrolet 2006 & up, ensure that holes are not partially covered with any plastic grommet or rust? If it is, remove the plastic grommet & rust from the thread holes & re-try the installation.

2. Mounting Bracket are not getting Installed properly.

In some cases Illustration images shown in Installation manual may not be the exactly same as per actual vehicle images ,also if Driver / Passenger side mounting brackets are very identical in the design, suggest referring Parts Identification guide to avoid fitment issue.

3. Products are thumping / rattling after installation.

Ensure that all required mounting brackets / hardware's are installed & tighten correctly. Suggest using white lithium / regular grease between the metal to metal contact surfaces.

4. Side Bar is not aligning with vehicle / Step Pads are not aligning with vehicle doors.

Side bar may be interchanged or mounting brackets are not installed at the correct position in the vehicle. Refer Parts identification guide.

5. Missing / Excess Hardware.

Recheck hardware count as per the part list.

6. Product not installing properly.

Ensure make model year, cab length and bed size of your vehicle is listed in the application. All installation steps are followed correctly.

Check out these other TrailFX Products!!

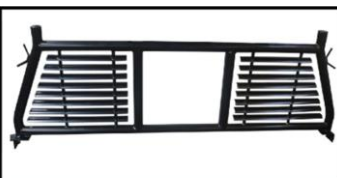
www.TrailFX.com



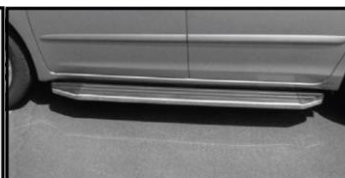
SIDE BAR



ROCKER GUADRS



HEADACHE RACKS



RUNNING BOARDS

Keystone Automotive Operations Inc. (KAO) warrants this product to be free of defects in material and workmanship at the time of purchase by the original retail consumer. KAO disclaims any other warranties, express or implied, including the warranty of fitness for a particular purpose or an intended use. If the product is found to be defective, KAO may replace or repair the product at our option, when the product is returned prepaid, with proof of purchase. Alteration to, improper installation, or misuse of this product voids the warranty. KAO's liability is limited to repair or replacement of products found to be defective, and specifically excludes liability for any incidental or consequential loss or damage.