



Full Length Hoop Step

Part No. A3314

Fits: 2009 - 2014
2009 - 2014

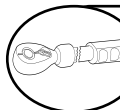
Ford F150 Super Crew Cab 5.5' Bed
Ford Raptor Super Crew Cab 5.5' Bed



REMOVE CONTENTS FROM BOX. VERIFY ALL PARTS ARE PRESENT.



READ INSTRUCTIONS CAREFULLY BEFORE STARTING INSTALLATION.



DO NOT OVER TORQUE. STANDARD OPERATING LOAD FOR TIGHTEN BODY MOUNT NUTS & BOLTS VARIES FROM 45 TO 65 FOOT POUND.



30-40 min



Cutting Not
Required



Drilling Not
Required



support@trailfx.com



1 866 638 4870



POLISHED STAINLESS STEEL – LIMITED LIFETIME
POWDER COATED BLACK – 3 YEARS

PARTS LIST:

Qty	Part Description	Qty	Part Description
12	3/8 X 1 1/2" Carriage Bolts	12	5/16 Clips
12	3/8" Washers	12	5/16 Flat Washers
12	3/8" Nuts	12	5/16 Hex Bolts

Tools Needed

9/16" Gear Wrench Socket And Ratchet

INSTALLATION PROCEDURE:

NOTE: If vehicle is equipped with factory running boards, remove boards and factory fasteners.

NOTE: Hoop Steps are manufactured specifically for driver and passenger sides. The short 45° bend at the end of each Hoop Step goes to the front of the vehicle. If you have a straight cut bed access step model, the straight cut end will be by the rear tire.

Step 1. Starting with the driver side, open both and hold the Hoop Step to the underside of the vehicle. The oval holes in the Hoop Step bracket will align with the factory holes on the bottom pinch roll of the truck. Using the 3/8" x 1 1/2" hardware provided, insert the carriage bolt from the outside and attach the flat washer and nut.

Step 2. Once all six bolts have been inserted, hold the front of the Hoop Step firmly against the body and tighten the front bolt. Now move to the rear of the Hoop Step and hold the step level so the gap is even along the entire Hoop Step. Next tighten the rear bolt. You may then tighten the remaining 4 bolts.

NOTE: On the 2009 - 2014 Super Crew model's center bracket, only one of the holes will line up due to the placement of the cab brace. Drilling the second hole is recommended, but is not required for the installation. The 5/16" clips, flat washers and hex bolts are for the upper holes in the top of the bracket.

COMPLETE INSTALLATION



PRODUCT CARE

- Periodically check the product to ensure all fasteners are tight and components are intact.
- Regular waxing is recommended to protect the finish of the product.
- **Use ONLY Non-Abrasive automotive wax.** Use of any soap, polish or wax that contains an abrasive is detrimental and can scratch the finish leading to corrosion.
- Aluminum polish may be used to polish small scratches and scuffs for **Stainless Steel finish.**
- Mild soap may be used to clean the product for both **Stainless Steel and Black finish.**

FAQ's**1. Hardware's are not of correct size.**

In GMC / Chevrolet truck model 2006 & up, customer needs to reuse the factory body bolts to install the bracket. If your vehicle is not GMC / Chevrolet 2006 & up, ensure that holes are not partially covered with any plastic grommet or rust? If it is, remove the plastic grommet & rust from the thread holes & re-try the installation.

2. Mounting Bracket are not getting Installed properly.

In some cases Illustration images shown in Installation manual may not be the exactly same as per actual vehicle images ,also if Driver / Passenger side mounting brackets are very identical in the design, suggest referring Parts Identification guide to avoid fitment issue.

3. Products are thumping / rattling after installation.

Ensure that all required mounting brackets / hardware's are installed & tighten correctly. Suggest using white lithium / regular grease between the metal to metal contact surfaces.

4. Side Bar is not aligning with vehicle / Step Pads are not aligning with vehicle doors.

Side bar may be interchanged or mounting brackets are not installed at the correct position in the vehicle. Refer Parts identification guide.

5. Missing / Excess Hardware.

Recheck hardware count as per the part list.

6. Product not installing properly.

Ensure make model year, cab length and bed size of your vehicle is listed in the application. All installation steps are followed correctly.

Check out these other TrailFX Products!!

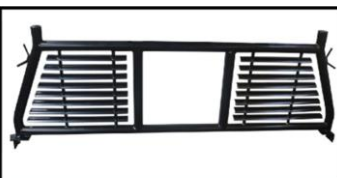
www.TrailFX.com



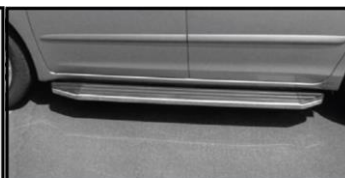
SIDE BAR



ROCKER GUARDS



HEADACHE RACKS



RUNNING BOARDS

Keystone Automotive Operations Inc. (KAO) warrants this product to be free of defects in material and workmanship at the time of purchase by the original retail consumer. KAO disclaims any other warranties, express or implied, including the warranty of fitness for a particular purpose or an intended use. If the product is found to be defective, KAO may replace or repair the product at our option, when the product is returned prepaid, with proof of purchase. Alteration to, improper installation, or misuse of this product voids the warranty. KAO's liability is limited to repair or replacement of products found to be defective, and specifically excludes liability for any incidental or consequential loss or damage.