



Full Length Hoop Step

Part No. A3216



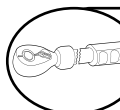
Fits: **2011 - 2014 Chevrolet Silverado 2500/3500 Extended Cab 8' Bed**
2011 - 2014 GMC Sierra 2500/3500 Extended Cab 8' Bed



REMOVE CONTENTS FROM BOX. VERIFY ALL PARTS ARE PRESENT.



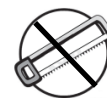
READ INSTRUCTIONS CAREFULLY BEFORE STARTING INSTALLATION.



DO NOT OVER TORQUE. STANDARD OPERATING LOAD FOR TIGHTEN BODY MOUNT NUTS & BOLTS VARIES FROM 45 TO 65 FOOT POUND.



30-40 min



Cutting Not
Required



Drilling Not
Required



support@trailfx.com



1 866 638 4870



POLISHED STAINLESS STEEL – LIMITED LIFETIME
POWDER COATED BLACK – 3 YEARS

Bolt Kit

PARTS LIST:

Qty	Part Description	Qty	Part Description
4	8mm X 1" Bolts (Crew Cab Only)	6	5/16 Tinnerman Clips (2 Needed For Crew Cab, 6 Needed For Quad/Extended Cab)
6	5/16 Fender Washers (Large Washers)	6	3/8" Flat Washers
6	3/8" Hex Nuts	6	3/8"X 1.5" Carriage Bolts
6	5/16" X 1" Hex Head Bolts (2 For Crew Cab, 6 For Quad/Extended Cab)		

Tools Needed

8mm socket wrench	10mm socket wrench
13mm socket wrench	

INSTALLATION PROCEDURE:

Step 1. Start by locating the driver side nerf-step. To do so, locate the shorter tail bend. The short end will go towards the front of the vehicle.

Step 2. Locate the factory threaded mounting holes located under the door on the vertical part of the floor pan. Next, locate the last mounting position on the pinch weld near the back of the cab. Install an 8mm metal clip in the upper hole right above the pinch weld mount. NOTE: Quad/Extended Cab models will use three clips in the upper mounts on both sides.

NOTE: Some models may have existing 8mm nuts welded in the pinch weld on each side. Four additional 8mm x 1" hex bolts may be required.

Step 3. Align the nerf-step brackets with the factory bolt hole locations. **NOTE:** Be sure the shorter tail bend is towards the front of the vehicle. Start all three upper 8mm x 1" hex bolts, 3/8 fender washers, and hand tighten. Next, start the 3/8" carriage bolts, 3/8 nuts and 3/8 flat washers on the bottom part of the bracket and hand tighten. **NOTE:** The carriage bolts will start at the bottom of the bracket and then go through the pinch weld with the nut and washer on top.

Step 4. After final positioning, there will be a small gap in between the lower part of the bracket and the pinch weld. Starting with the lower bolt hole locations, torque each bolt to 15-20 ft/lbs. This will load the brackets to the body. Next, torque the upper bolt locations to 15-20 ft/lbs.

Step 5. Repeat steps 2-4 for the passenger side. This concludes the installation.

***(11-14 HD models will have a shortened bracket on the front passenger side step to accommodate for the DEF tank)**

COMPLETE INSTALLATION



PRODUCT CARE

- Periodically check the product to ensure all fasteners are tight and components are intact.
- Regular waxing is recommended to protect the finish of the product.
- **Use ONLY Non-Abrasive automotive wax.** Use of any soap, polish or wax that contains an abrasive is detrimental and can scratch the finish leading to corrosion.
- Aluminum polish may be used to polish small scratches and scuffs for **Stainless Steel finish.**
- Mild soap may be used to clean the product for both **Stainless Steel and Black finish.**

FAQ's**1. Hardware's are not of correct size.**

In GMC / Chevrolet truck model 2006 & up, customer needs to reuse the factory body bolts to install the bracket. If your vehicle is not GMC / Chevrolet 2006 & up, ensure that holes are not partially covered with any plastic grommet or rust? If it is, remove the plastic grommet & rust from the thread holes & re-try the installation.

2. Mounting Bracket are not getting Installed properly.

In some cases Illustration images shown in Installation manual may not be the exactly same as per actual vehicle images ,also if Driver / Passenger side mounting brackets are very identical in the design, suggest referring Parts Identification guide to avoid fitment issue.

3. Products are thumping / rattling after installation.

Ensure that all required mounting brackets / hardware's are installed & tighten correctly. Suggest using white lithium / regular grease between the metal to metal contact surfaces.

4. Side Bar is not aligning with vehicle / Step Pads are not aligning with vehicle doors.

Side bar may be interchanged or mounting brackets are not installed at the correct position in the vehicle. Refer Parts identification guide.

5. Missing / Excess Hardware.

Recheck hardware count as per the part list.

6. Product not installing properly.

Ensure make model year, cab length and bed size of your vehicle is listed in the application. All installation steps are followed correctly.

Check out these other TrailFX Products!!

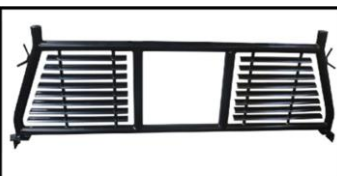
www.TrailFX.com



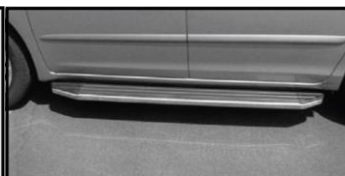
SIDE BAR



ROCKER GUARDS



HEADACHE RACKS



RUNNING BOARDS

Keystone Automotive Operations Inc. (KAO) warrants this product to be free of defects in material and workmanship at the time of purchase by the original retail consumer. KAO disclaims any other warranties, express or implied, including the warranty of fitness for a particular purpose or an intended use. If the product is found to be defective, KAO may replace or repair the product at our option, when the product is returned prepaid, with proof of purchase. Alteration to, improper installation, or misuse of this product voids the warranty. KAO's liability is limited to repair or replacement of products found to be defective, and specifically excludes liability for any incidental or consequential loss or damage.