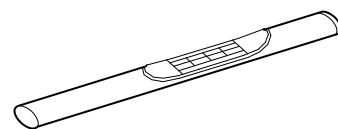




4" Oval Side Bar

Part No. A1540S/A1540B



Fits: 2000 - 2018
2000 - 2018
2000 - 2018
2000 - 2018

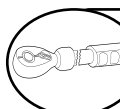
Chevrolet Silverado 1500 - Crew Cab 4 Full Door
Chevrolet Silverado 2500/3500 - Crew Cab 4 Full Door
GMC Sierra 1500 - Crew Cab 4 Full Door
GMC Sierra 2500/3500 - Crew Cab 4 Full Door



REMOVE CONTENTS FROM BOX. VERIFY ALL PARTS ARE PRESENT.



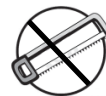
READ INSTRUCTIONS CAREFULLY BEFORE STARTING INSTALLATION.



DO NOT OVER TORQUE. STANDARD OPERATING LOAD FOR TIGHTEN BODY MOUNT NUTS & BOLTS VARIES FROM 45 TO 65 FOOT POUND.



30-60 min



Cutting Not
Required



Drilling Not
Required



support@trailfx.com



1 866 638 4870



POLISHED STAINLESS STEEL – LIMITED LIFETIME
POWDER COATED BLACK – 3 YEARS

PARTS LIST:

Qty	Part Description	Qty	Part Description
1 Set	Oval step bar	2	M10-1.5 x 30mm Hex Head Bolt
1 Set	Front bracket	6	M10-1.5 Flange Lock Nut
1 Set	Center bracket	12	M10-1.5 x 30mm Button Head Bolt
1 Set	Rear bracket	14	M10 Flat Washer
1 Set	Support bracket	12	M10 Lock Washer
2	M10-1.5 x 30mm "T" Bolt Plate	2	M14 x 140mm Hex Head Bolt
2	Long support bracket	2	Spacer Block
		6	Φ50 x Φ15 x 4.5 large spacer washer

DRIVER (LEFT) FRONT



PASSENGER (RIGHT) FRONT

DRIVER (LEFT) CENTER



PASSENGER (RIGHT) CENTER

DRIVER (LEFT) CENTER SUPPORT



PASSENGER (RIGHT) CENTER SUPPORT

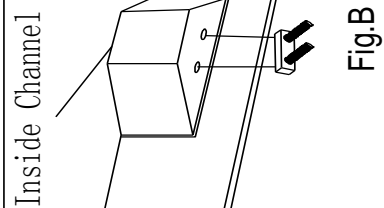
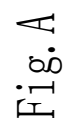
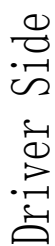
DRIVER (LEFT) REAR



PASSENGER (RIGHT) REAR

INSTALLATION PROCEDURE

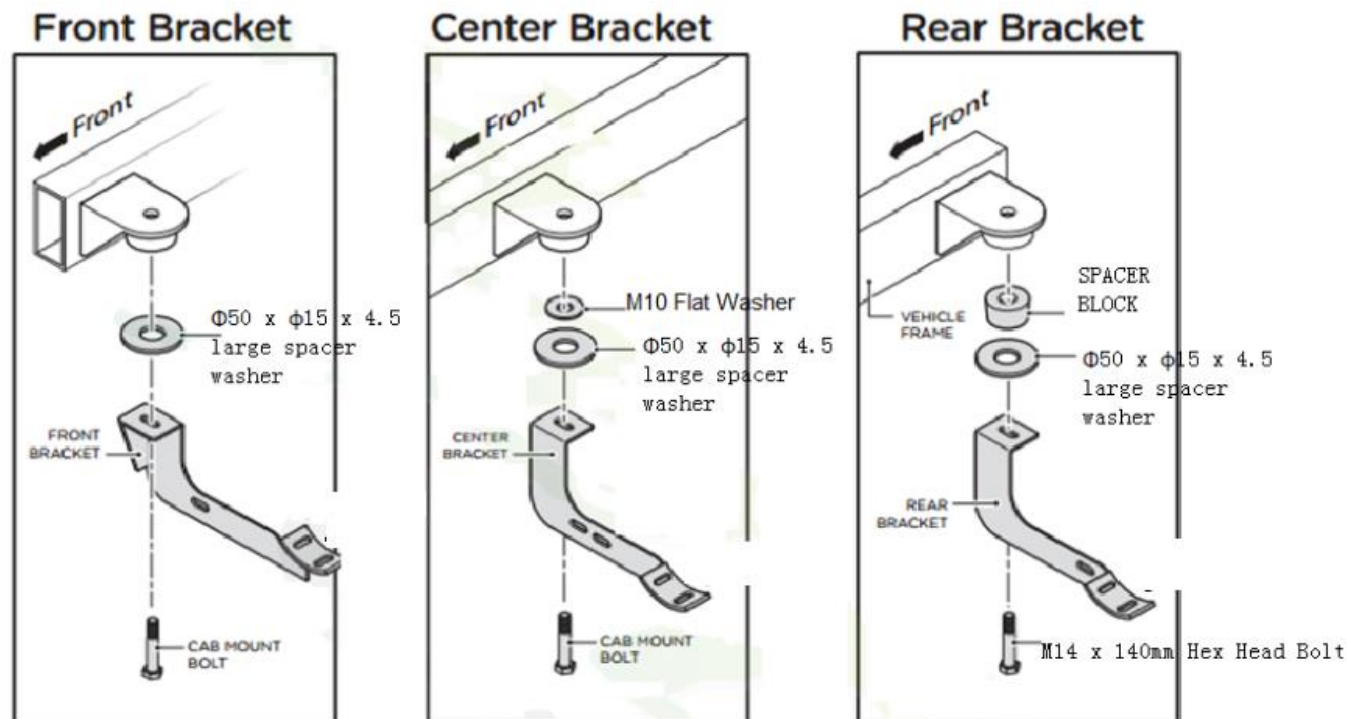
1. Read installation manual and installation drawing completely. Understand all brackets and bolts before installation.
2. Remove the body mount bolts from the front, mid and rear body mounts underneath cab of truck. (Keep the factory bolts and bushings)
3. Loosely bolt front, mid and rear mounting brackets to front, mid and rear body mounts using the factory bolts as shown Fig. A. (Make sure factory bushing is put on the same way it is taken off)
4. Insert bolts plate into mid holes inside support channel as shown Fig. B. Loosely attach support brace to bolt plate using flange lock nut(3) as shown Fig. A. Attach support brace to mid mounting bracket in center hole using hex bolt(1) flat washer(2) and flange lock nut(3) as shown in Fig. A.
5. Mount step bar to mounting brackets using hex head bolt(4), lock(5) flat(6) washers and rubber gasket(7) as shown. Hand tightens into nut sort on the bottom of the step bar. Adjust position of step bar and tighten all bolts.
6. Torque the 10mm bolts to 30ft/lbs, the 10mm bolts and the factory bolts to 45ft/lbs.



ADDENDUM 1

For 2014 Current Chevy / GMC Crew Cab 1500 Model. Place Spacer Washers as shown in the diagram below.

DO NOT use pneumatic or electric impact on Cab Mount Bolts



SPACER BLOCK



M14 x 140mm Hex Head Bolt



Ø50 x Ø15 x 4.5 large spacer washer



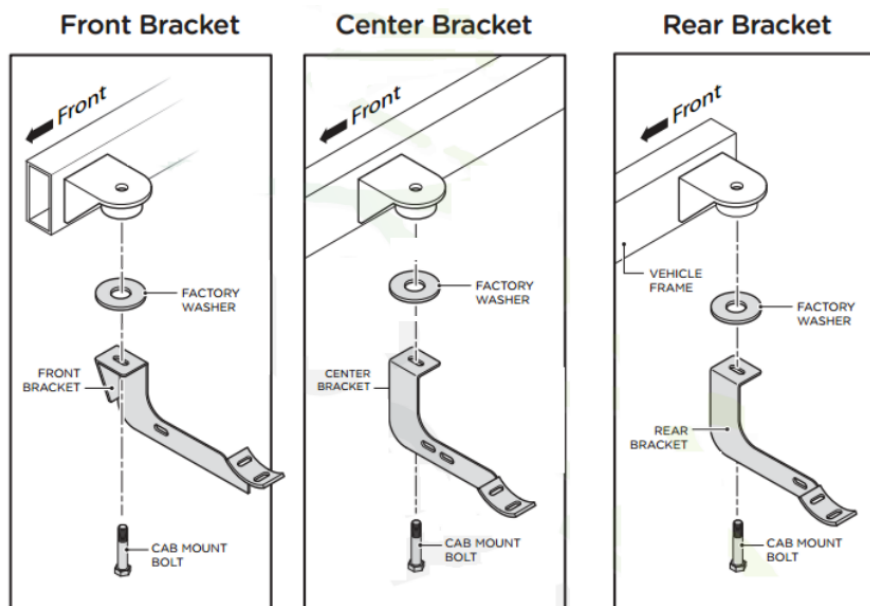
Long support bracket

Note: Use the long Support bracket on Center bracket if Support bracket is not long enough.

ADDENDUM 2

For 2015 Current Chevy / GMC Crew Cab 2500/3500 Model. Place Spacer Washers as shown in the diagram below.

DO NOT use pneumatic or electric impact on Cab Mount Bolts



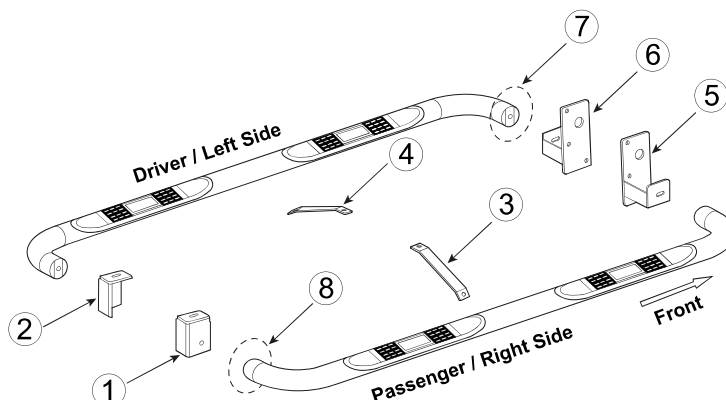
PARTS IDENTIFICATION GUIDE

Driver Side tube taped in "Red" Color. Passenger Side tube taped in "Blue" Color.

No.	Parts Identification
1	Passenger / Right 'Rear' Bracket marked "RR"
2	Driver / Left 'Rear' Bracket marked "RL"
3	Passenger / Right 'Center' Bracket marked "CR"
4	Driver / Left 'Center' Bracket marked "CL"
5	Passenger / Right 'Front' Bracket marked "FR"
6	Driver / Left 'Front' Bracket marked "FL"
7	'Left' marked "L"
8	'Right' marked "R"

Note:

- This guide is to identify the parts and not a reference for part count.
- Product / Bracket image is for representative purpose only.
- Actual design may vary based on application.
- Refer Parts List for Hardware.

**PRODUCT CARE**

- Periodically check the product to ensure all fasteners are tight and components are intact.
- Regular waxing is recommended to protect the finish of the product.
- **Use ONLY Non-Abrasive automotive wax.** Use of any soap, polish or wax that contains an abrasive is detrimental and can scratch the finish leading to corrosion.
- Aluminum polish may be used to polish small scratches and scuffs for **Stainless Steel finish.**
- Mild soap may be used to clean the product for both **Stainless Steel and Black finish.**

FAQ's**1. Hardware's are not of correct size.**

In GMC / Chevrolet truck model 2006 & up, customer needs to reuse the factory body bolts to install the bracket. If your vehicle is not GMC / Chevrolet 2006 & up, ensure that holes are not partially covered with any plastic grommet or rust? If it is, remove the plastic grommet & rust from the thread holes & re-try the installation.

2. Mounting Bracket are not getting Installed properly.

In some cases Illustration images shown in Installation manual may not be the exactly same as per actual vehicle images ,also if Driver / Passenger side mounting brackets are very identical in the design, suggest referring Parts Identification guide to avoid fitment issue.

3. Products are thumping / rattling after installation.

Ensure that all required mounting brackets / hardware's are installed & tighten correctly. Suggest using white lithium / regular grease between the metal to metal contact surfaces.

4. Side Bar is not aligning with vehicle / Step Pads are not aligning with vehicle doors.

Side bar may be interchanged or mounting brackets are not installed at the correct position in the vehicle. Refer Parts identification guide.

5. Missing / Excess Hardware.

Recheck hardware count as per the part list.

6. Product not installing properly.

Ensure make model year, cab length and bed size of your vehicle is listed in the application. All installation steps are followed correctly.

Check out these other TrailFX Products!!

www.TrailFX.com



BULL BARS



GRILLE GUARDS



BED RAILS



RUNNING BOARDS

Keystone Automotive Operations Inc. (KAO) warrants this product to be free of defects in material and workmanship at the time of purchase by the original retail consumer. KAO disclaims any other warranties, express or implied, including the warranty of fitness for a particular purpose or an intended use. If the product is found to be defective, KAO may replace or repair the product at our option, when the product is returned prepaid, with proof of purchase. Alteration to, improper installation, or misuse of this product voids the warranty. KAO's liability is limited to repair or replacement of products found to be defective, and specifically excludes liability for any incidental or consequential loss or damage.