



# 3" Bull Bar

## Part No. 1340401041 / B0019B



Fits: 2004 - 2015  
2004 - 2015

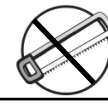
Nissan Armada 2/4WD  
Nissan Titan Extended Cab/Crew Cab 2/4WD



ARMADA - WILL NOT WORK ON PLATINUM EDITION MODELS EQUIPPED WITH FRONT PARKING SONAR SYSTEM. TITAN - NOT COMPATIBLE WITH OPTIONAL FULL COVERAGE FACTORY ALUMINUM SKID PLATE. OPTIONAL SKID PLATE MUST BE REMOVED AND CANNOT BE REINSTALLED.



30-60 min



Cutting Not Required



Drilling Not Required



REMOVE CONTENTS FROM BOX. VERIFY ALL PARTS ARE PRESENT.



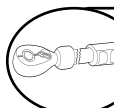
[support@trailfx.com](mailto:support@trailfx.com)



READ INSTRUCTIONS CAREFULLY BEFORE STARTING INSTALLATION.



1 866 638 4870



DO NOT OVER TORQUE. STANDARD OPERATING LOAD FOR TIGHTEN BODY MOUNT NUTS & BOLTS VARIES FROM 45 TO 65 FOOT POUND.

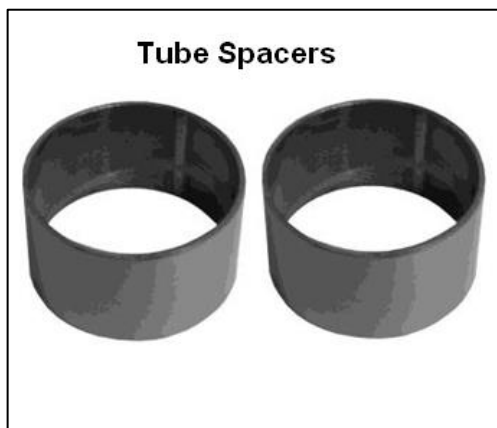


POLISHED STAINLESS STEEL - LIMITED LIFETIME  
POWDER COATED BLACK - 3 YEARS

### PARTS LIST:

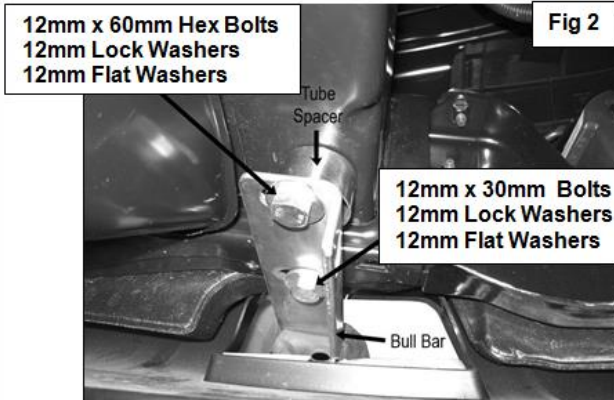
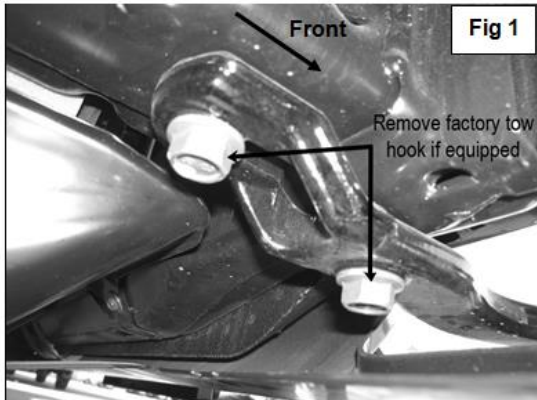
Qty	Part Description	Qty	Part Description
1	Bull Bar	4	12mm Lock Washers
2	12mm-1.25mm x 60mm Fine Thread Hex Bolts	4	12mm Flat Washers
2	12mm-1.25mm x 30mm Fine Thread Hex Bolts	2	Tube Spacers

### Tube Spacers



### INSTALLATION PROCEDURE:

1. Remove factory tow hooks, (if equipped), from vehicle, **(Figure 1)**. **NOTE:** Tow hooks cannot
2. With help, insert the Bull Bar Mounting Brackets through the openings in the bumper for the tow hooks. Line up the slots in the mounting tabs with the threaded holes in the bottom of the frame channel.
3. Bolt the front (forward) mounting hole on the Bull Bar to the frame using the included (2) 12mm x 30mm Fine Thread Hex Bolts, (2) 12mm Lock Washers and (2) 12mm Flat Washers, **(Figure 2)**. Do not tighten hardware at this time.
4. Place (1) Tube Spacer between the Bull Bar and the frame in each of the rear mounting locations and bolt it in place using the included (2) 12mm x 60mm Fine Thread Hex Bolts, (2) 12mm Lock Washers and (2) 12mm Flat Washers **(Figure 2)**.
5. Align Bull Bar properly and tighten all hardware. dware at this time.



**PRODUCT CARE**

- Periodically check the product to ensure all fasteners are tight and components are intact.
- Regular waxing is recommended to protect the finish of the product.
- **Use ONLY Non-Abrasive automotive wax.** Use of any soap, polish or wax that contains an abrasive is detrimental and can scratch the finish leading to corrosion.
- Aluminum polish may be used to polish small scratches and scuffs for **Stainless Steel finish.**
- Mild soap may be used to clean the product for both **Stainless Steel and Black finish.**

**FAQ's****1. Hardware's are not of correct size.**

*In GMC / Chevrolet truck model 2006 & up, customer needs to reuse the factory body bolts to install the bracket. If your vehicle is not GMC / Chevrolet 2006 & up, ensure that holes are not partially covered with any plastic grommet or rust? If it is, remove the plastic grommet & rust from the thread holes & re-try the installation.*

**2. Mounting Bracket are not getting Installed properly.**

*In some cases Illustration images shown in Installation manual may not be the exactly same as per actual vehicle images ,also if Driver / Passenger side mounting brackets are very identical in the design, suggest referring Parts Identification guide to avoid fitment issue.*

**3. Products are thumping / rattling after installation.**

*Ensure that all required mounting brackets / hardware's are installed & tighten correctly. Suggest using white lithium / regular grease between the metal to metal contact surfaces.*

**4. Side Bar is not aligning with vehicle / Step Pads are not aligning with vehicle doors.**

*Side bar may be interchanged or mounting brackets are not installed at the correct position in the vehicle. Refer Parts identification guide.*

**5. Missing / Excess Hardware.**

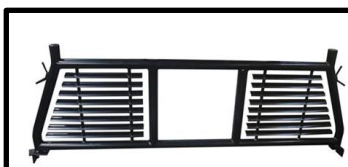
*Recheck hardware count as per the part list.*

**6. Product not installing properly.**

*Ensure make model year, cab length and bed size of your vehicle is listed in the application. All installation steps are followed correctly.*

**Check out these other TrailFX Products!!**

www.TrailFX.com

**SIDE BARS****ROCKER GUARD****HEADACHE RACKS****RUNNING BOARDS**

*Keystone Automotive Operations Inc. (KAO) warrants this product to be free of defects in material and workmanship at the time of purchase by the original retail consumer. KAO disclaims any other warranties, express or implied, including the warranty of fitness for a particular purpose or an intended use. If the product is found to be defective, KAO may replace or repair the product at our option, when the product is returned prepaid, with proof of purchase. Alteration to, improper installation, or misuse of this product voids the warranty. KAO's liability is limited to repair or replacement of products found to be defective, and specifically excludes liability for any incidental or consequential loss or damage.*