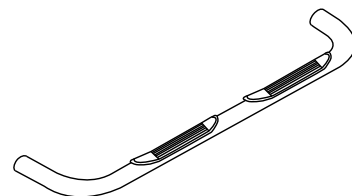




## 3" Side Bar

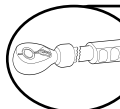
### Part No. 1120230051/3

Fits: **2005-2012****Dodge Dakota Quad Cab**

REMOVE CONTENTS FROM BOX. VERIFY ALL PARTS ARE PRESENT.



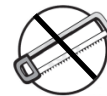
READ INSTRUCTIONS CAREFULLY BEFORE STARTING INSTALLATION.



DO NOT OVER TORQUE. STANDARD OPERATING LOAD FOR TIGHTEN BODY MOUNT NUTS &amp; BOLTS VARIES FROM 45 TO 65 FOOT POUND.



30-60 min

Cutting Not  
RequiredDrilling Not  
Required[support@trailfx.com](mailto:support@trailfx.com)

1 866 638 4870

POLISHED STAINLESS STEEL – LIMITED LIFETIME  
POWDER COATED BLACK – 3 YEARS**PARTS LIST:**

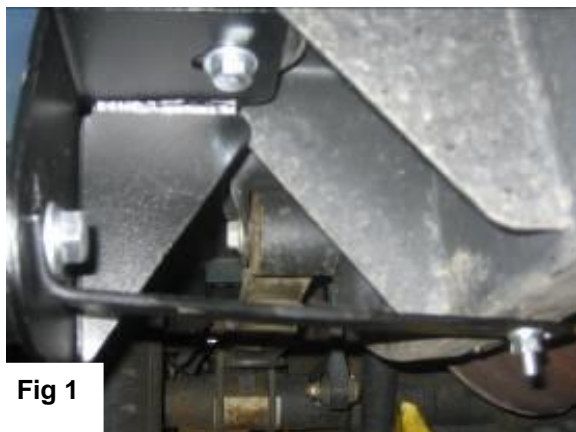
Qty	Part Description	Qty	Part Description
1 Set	Side Bar	8	1/2" Flat Washer
1 Set	Front Bracket	8	1/2" Lock Washer
1 Set	Rear Bracket	4	3/8"-16 x 1 1/2" Bolt Plate
1 Set	Front Support Bracket	4	3/8" Flat Washer
1 Set	Rear Support Bracket	4	3/8" Lock Washer
4	1/2"-13 x 2 1/2" Hex Head Bolt	4	3/8"-16 Hex Nut
4	M12-1.75 x 120mm Hex Head Bolt		

DRIVER (LEFT) FRONT	DRIVER (LEFT) REAR	PASSENGER (RIGHT) REAR	PASSENGER (RIGHT) FRONT
DRIVER (LEFT) FRONT SUPPORT	DRIVER (LEFT) REAR SUPPORT	PASSENGER (RIGHT) REAR SUPPORT	PASSENGER (RIGHT) FRONT SUPPORT

**INSTALLATION PROCEDURE****IMPORTANT:** A magnetic pick up tool is recommended to assist with the installation.

1. Remove the end caps on the side bars before beginning installation.
2. Locate the correct Side Bar and set of Brackets referenced to the illustration. (See Illustration).

3. Locate the existing bolts on the correct body mounts of the chassis. Remove them and install the main brackets (See pictures). Attach main brackets to body mounts with M12-1.75 x 120mm hex head bolts, ½" flat washer and ½" lock washer. Do not tighten. (See Fig 1, 2).

**Fig 1**

Passenger Side Rear Bracket Installation

**Fig 2**

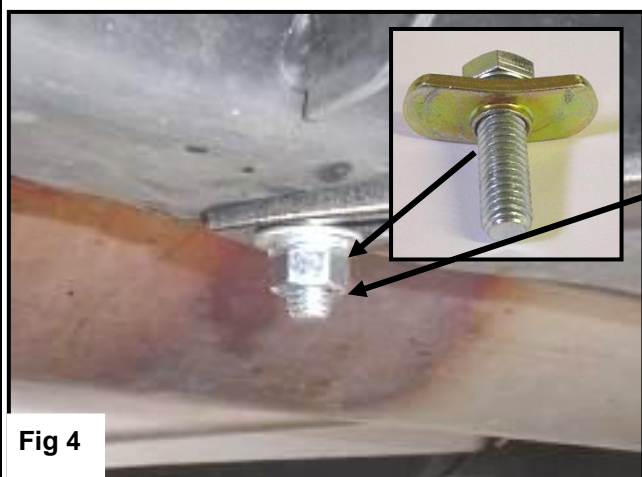
Passenger Side Front Bracket Installation

4. Bolt the rear auxiliary bracket to the bottom side of the vehicle frame using the 3/8" bolt plate, 3/8" flat washer, 3/8" lock washer, and 3/8" lock nut. (See Fig 3, 4). Attach the other end of the auxiliary bracket to the main bracket and sidebar with ½" hex head bolts, ½" flat washers, and ½" lock washers. Do not tighten yet.



Passenger's Rear Bracket installation shown.

Attach rear auxiliary bracket to main bracket and sidebar here with ½" x 2.50" hex bolt, ½" lock washer, and ½" flat washer.

**Fig 3****Fig 4**

Attach auxiliary bracket to frame here with 3/8" bolt plate, 3/8" hex nut, 3/8" lock washer and 3/8" flat washer. (3/8" Bolt Plate)

5. Attach the front auxiliary bracket to the side of frame under the body mount using the 3/8" bolt plate, 3/8" flat washer, 3/8" lock washer, and 3/8" lock nut. (See Fig 5). Next, attach the other end of the auxiliary bracket to the main bracket and sidebar with 1/2" hex head bolt, 1/2" flat washer, and 1/2" lock washer. (See Fig 6). Do not tighten yet.

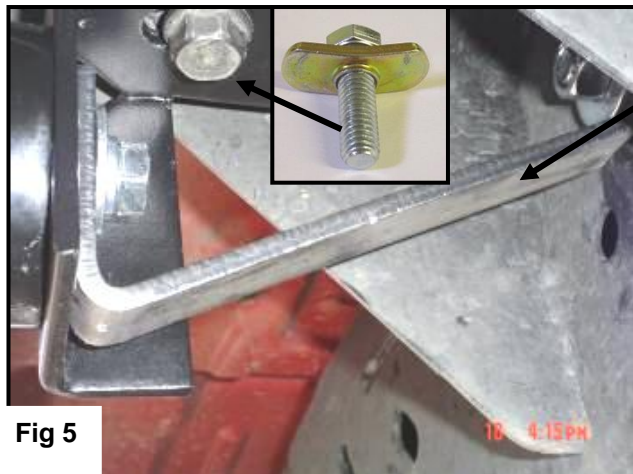


Fig 5

Attach front auxiliary bracket to frame here with 3/8" bolt plate, 3/8 hex nut, 3/8" lock washer and 3/8" flat washer. (3/8" Bolt Plate)

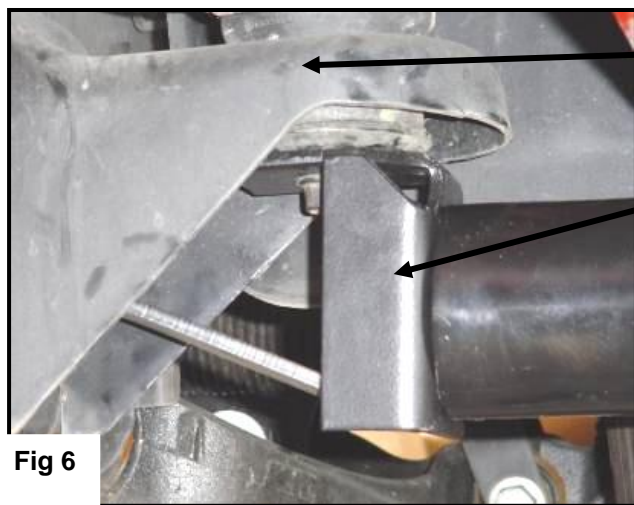


Fig 6

Attach passenger's front main bracket to body mount here with M12-1.75 x 120mm Hex Head Bolt, 1/2" Lock Washer, and 1/2" Flat Washer.

Attach front auxiliary bracket to main bracket and sidebar here with 1/2" x 2.50" hex bolt, 1/2"lock washer, and 1/2" flat washer.

6. Align and tighten the body mount bolts. Then align the Side Bar and tighten the Side Bar and auxiliary bracket bolts. Torque the 1/2" and M12 fasteners to 65 ft. lbs. and torque the 3/8" fasteners to 35 ft. lbs.
7. Recheck bolts periodically.

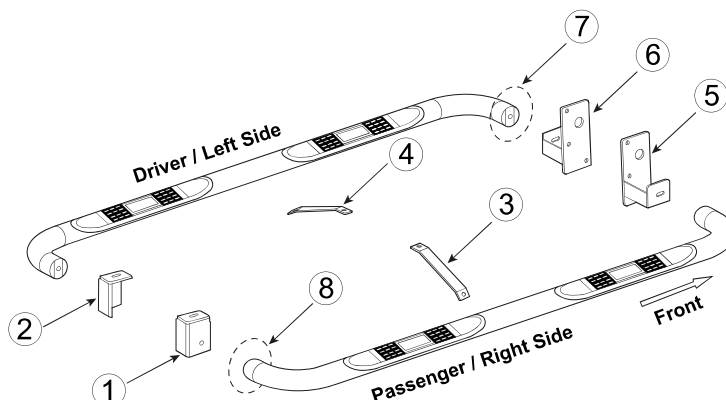
## PARTS IDENTIFICATION GUIDE

**Driver Side tube taped in "Red" Color. Passenger Side tube taped in "Blue" Color.**

No.	Parts Identification
1	Passenger / Right 'Rear' Bracket marked "RR"
2	Driver / Left 'Rear' Bracket marked "RL"
3	Passenger / Right 'Center' Bracket marked "CR"
4	Driver / Left 'Center' Bracket marked "CL"
5	Passenger / Right 'Front' Bracket marked "FR"
6	Driver / Left 'Front' Bracket marked "FL"
7	'Left' marked "L"
8	'Right' marked "R"

### Note:

- This guide is to identify the parts and not a reference for part count.
- Product / Bracket image is for representative purpose only.
- Actual design may vary based on application.
- Refer Parts List for Hardware.



## PRODUCT CARE

- Periodically check the product to ensure all fasteners are tight and components are intact.
- Regular waxing is recommended to protect the finish of the product.
- **Use ONLY Non-Abrasive automotive wax.** Use of any soap, polish or wax that contains an abrasive is detrimental and can scratch the finish leading to corrosion.
- Aluminum polish may be used to polish small scratches and scuffs for **Stainless Steel finish.**
- Mild soap may be used to clean the product for both **Stainless Steel and Black finish.**

## FAQ's

### 1. Hardware's are not of correct size.

*In GMC / Chevrolet truck model 2006 & up, customer needs to reuse the factory body bolts to install the bracket. If your vehicle is not GMC / Chevrolet 2006 & up, ensure that holes are not partially covered with any plastic grommet or rust? If it is, remove the plastic grommet & rust from the thread holes & re-try the installation.*

### 2. Mounting Bracket are not getting Installed properly.

*In some cases Illustration images shown in Installation manual may not be the exactly same as per actual vehicle images ,also if Driver / Passenger side mounting brackets are very identical in the design, suggest referring Parts Identification guide to avoid fitment issue.*

### 3. Products are thumping / rattling after installation.

*Ensure that all required mounting brackets / hardware's are installed & tighten correctly. Suggest using white lithium / regular grease between the metal to metal contact surfaces.*

### 4. Side Bar is not aligning with vehicle / Step Pads are not aligning with vehicle doors.

*Side bar may be interchanged or mounting brackets are not installed at the correct position in the vehicle. Refer Parts identification guide.*

### 5. Missing / Excess Hardware.

*Recheck hardware count as per the part list.*

### 6. Product not installing properly.

*Ensure make model year, cab length and bed size of your vehicle is listed in the application. All installation steps are followed correctly.*

Check out these other TrailFX Products!!

www.TrailFX.com



**BULL BARS**



**GRILLE GUARDS**



**BED RAILS**



**RUNNING BOARDS**

Keystone Automotive Operations Inc. (KAO) warrants this product to be free of defects in material and workmanship at the time of purchase by the original retail consumer. KAO disclaims any other warranties, express or implied, including the warranty of fitness for a particular purpose or an intended use. If the product is found to be defective, KAO may replace or repair the product at our option, when the product is returned prepaid, with proof of purchase. Alteration to, improper installation, or misuse of this product voids the warranty. KAO's liability is limited to repair or replacement of products found to be defective, and specifically excludes liability for any incidental or consequential loss or damage.