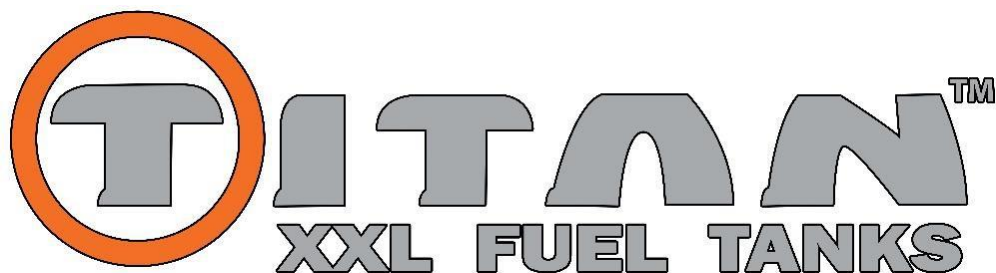


Titan PN: 03 0000 0157



INSTALLATION INSTRUCTIONS

Ram Cab and Chassis Auxiliary Kit

9900057

These instructions are intended to be a supplement to the tank installation instructions.

Parts List:

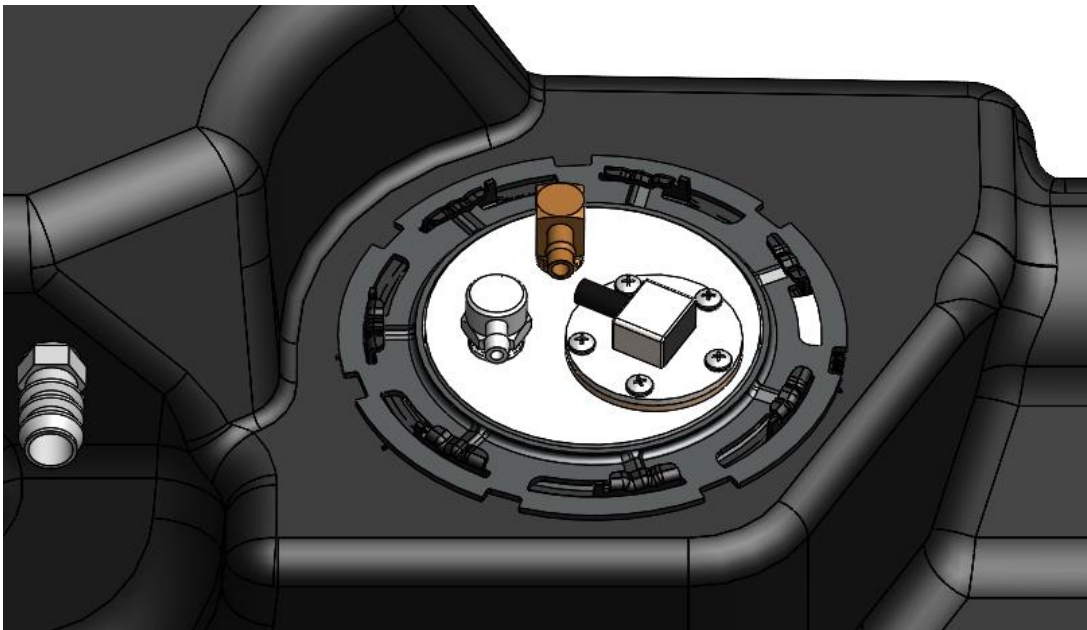
Description	Part Number	Quantity
Auxiliary Sending Unit	03 0135 0000	1
Wire kit: 0201570000		1
18 AWG Black Wire, 28'	02 0000 0461	2
18 AWG Purple Wire, 28'	02 0000 0462	1
18 AWG Blue Wire, 28'	02 0000 0463	1
18 AWG Crimp Insulated Ring Terminal, 3/8" stud	99 0000 0204	3
18 AWG Heat-Shrink Butt-Splice Terminal	99 0000 0203	6
QTM Fuse Tap	99 0000 0487	1
1/4" ID Wire Loom, Black Polyethylene, 28'	02 0000 0464	1
Locking Torque Ring - Top	98 0000 0403	1
18 Ga. Blade Quick-Disconnect Terminal	99 0000 0489	1
Pump Kit: 0201600000		
<i>Pump Clamps Sub-KIT:</i>	<i>02 0158 0000</i>	1
#28 Hose Clamp	99 0000 0438	2
#4 Hose Clamp with 5/16" Band Width	99 0000 0483	8
<i>In-Line Solenoid Pump Assembly</i>	<i>99 0000 0521</i>	1
In-Line Solenoid Pump	99 0000 0370	1
1/8" NPT to 3/8" Hose Barb Adapter, Gray Kynar	99 0000 0403	2
<i>Electronic Pump Controller Assembly</i>	<i>99 0000 0525</i>	1
Electronic Controller	99 0130 0000	1
Adhesive Backed Velcro, 2 inches long	99 0000 0283	1
<i>Hose Sub Kit:</i>	<i>02 0159 0000</i>	1
In-Line-Filter with 3/8" Hose Barbs	99 0000 0405	1

5/16" RLA Fuel Hose, 10 Foot Length	02 0000 0457	1
3/8" RLA Fuel Hose, 10 Foot Length	02 0000 0453	1
Fill Neck Adapter - 1.5" double tee	99 0000 0173	1
1/2" NPT to 5/16" elbow	02 0000 0451	1
1/2" NPT to 3/8" elbow	02 0000 0454	1

Note: Due to the many varieties of truck bodies in use, this system does not include a fill neck kit for the rear auxiliary tank. These can be obtained from TITAN Fuel Tanks, your vehicle dealer, or in some cases the truck body manufacturer. Be sure to obtain the proper filler neck to fit your vehicle and application.

I. Prepare & Install Auxiliary Tank

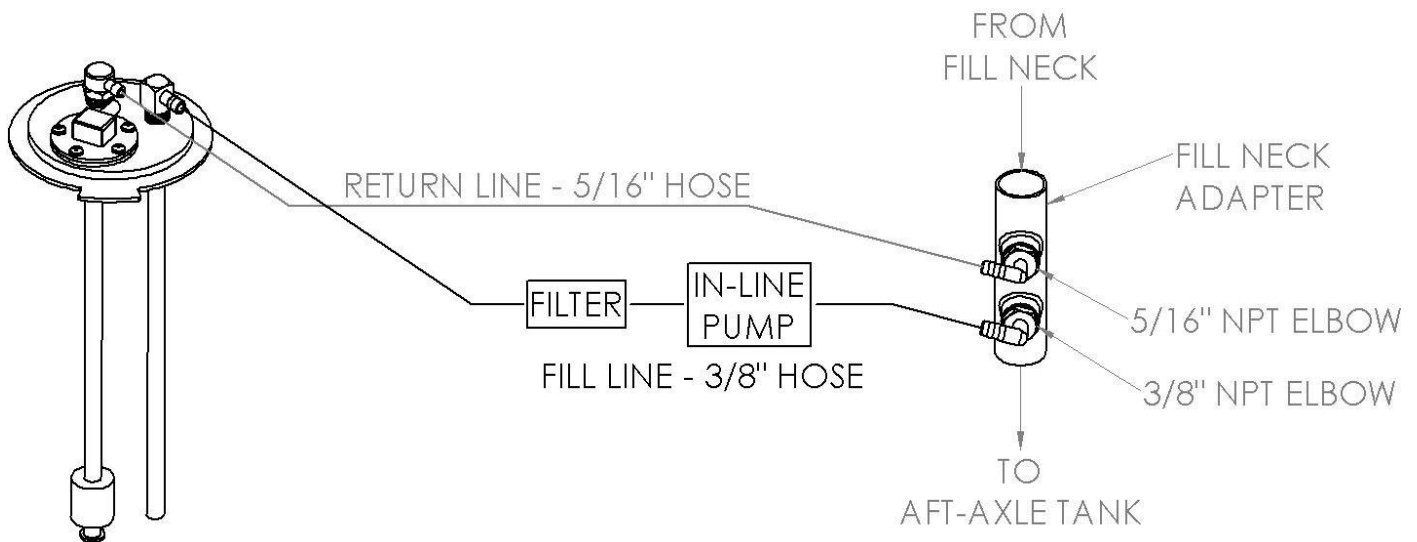
<u>Step</u>	<u>Description</u>
1	Before any installation begins, PLEASE INVENTORY ALL ITEMS IN KIT. Do not start Installation until you are 100% certain all Items are accounted for.
2	Make sure that the lift you are using can hold the full weight of the truck. Many C&C trucks are upfitted with components that cause them to be too heavy for some commercial lifts. If you do not have a lift capable of lifting the truck, installation can be completed on the ground.
3	The new TITAN tank comes with an O-ring to seal the sending unit. Make sure the new o-ring groove is clean before installation. Place the o-ring into the groove before inserting the Titan Auxiliary Sending Unit (0301350000) into the Titan Midship tank.



- 4 Place the provided Titan Torque Ring (9900000403) onto the sending unit and tighten it clockwise as far as it will go.
- 5 Attach the two hoses to the sending unit. The 5/16" hose attaches to the rollover valve. The slightly larger 3/8" hose connects to the square pick-up tube fitting.
- 6 Connect one of the black wires and the purple wire to the level sensor leads per the wiring diagram (see below).
- 7 Use the instructions for the Titan Midship Tank to finish installing the tank into the vehicle. As you lift the tank into place in the vehicle, make sure the hoses and wires attached to the sending unit remain accessible.

II. Auxiliary Plumbing

Step	Description
8	Run the 5/16" and 3/8" hoses over the frame to an accessible location on the aft-axle fill neck.
9	Install the two elbow adapters (5/16" barb to 1/2" NPT and 3/8" barb to 1/2" NPT) on the metal fill neck adapter. Use a thread sealant such as PTFE tape or similar to prevent leaks.
10	Pick the location where the fill neck adapter will be inserted into the fill neck. Cut the fill neck and install the adapter so that the smaller 5/16" barb is higher in elevation and closer to the cap than the 3/8" barb. Orient the barbs so the point roughly upwards and towards the sending unit.



- 11 Check the routing on the 5/16" vent line from the brass pick-up tube fitting on the sending unit to the smaller barb on the fill neck adapter. Make sure there are no sags or dips in the line where fuel could accumulate. A high point in the middle is fine so long as fuel can always drain out of the vent line and into a tank. Trim the excess hose and attach the hose to the 5/16" barb on the fill neck adapter.
- 12 Route the 3/8" line from the sender to the fill neck adapter. Pick a good location to mount the pump, preferably in a sheltered place out of the way of water and ice. Be sure the in-line filter is accessible for service and located between the sending unit and the pump. Mount the pump to the frame, then cut the hose to install the filter and the pump. Finish routing the fill hose to the fill neck adapter. Trim the excess and mount to the larger barb on the fill neck adapter.
- 13 Check the hose clamp at each connection and make sure all have been securely tightened.

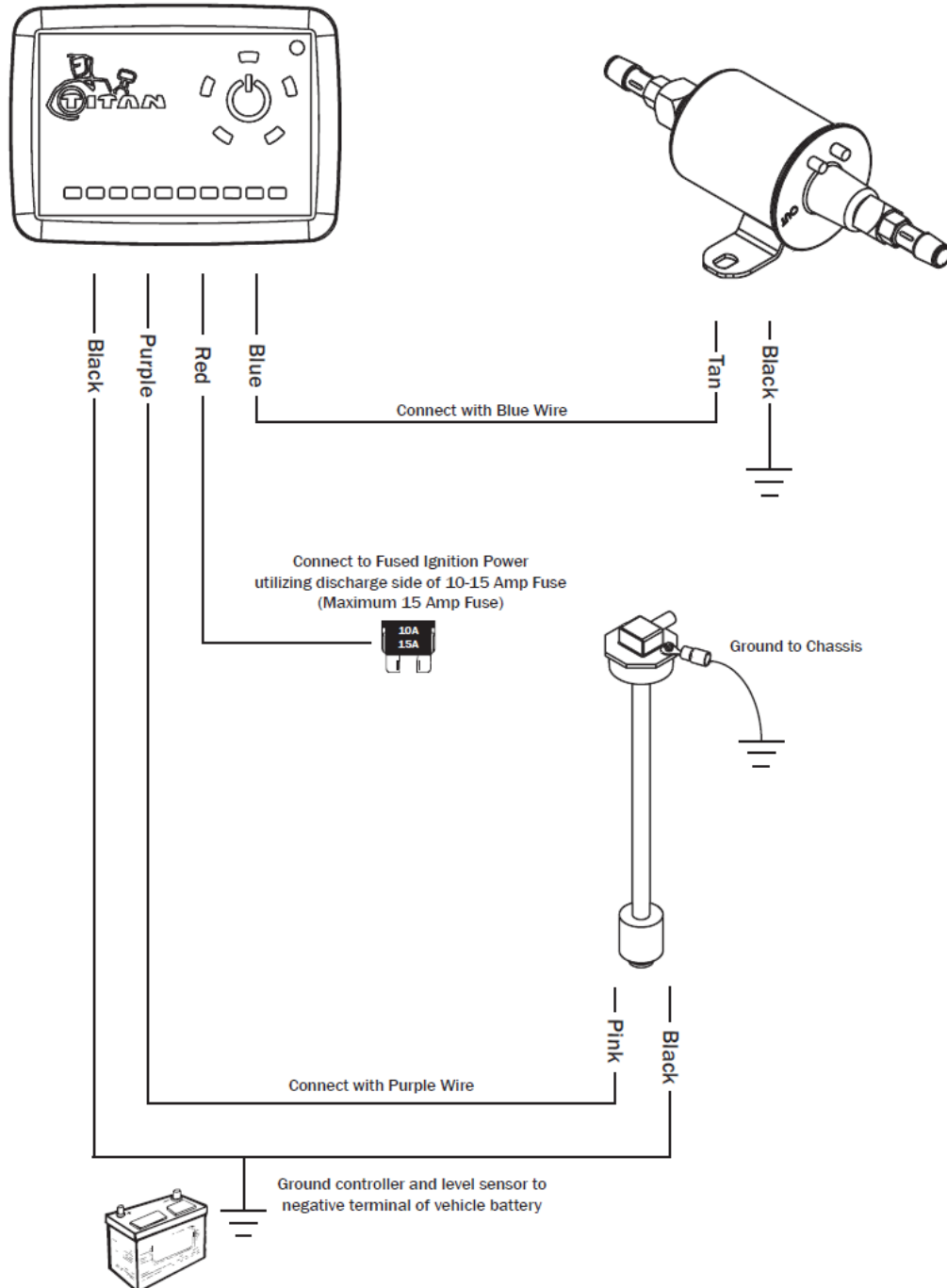
III. Auxiliary Wiring



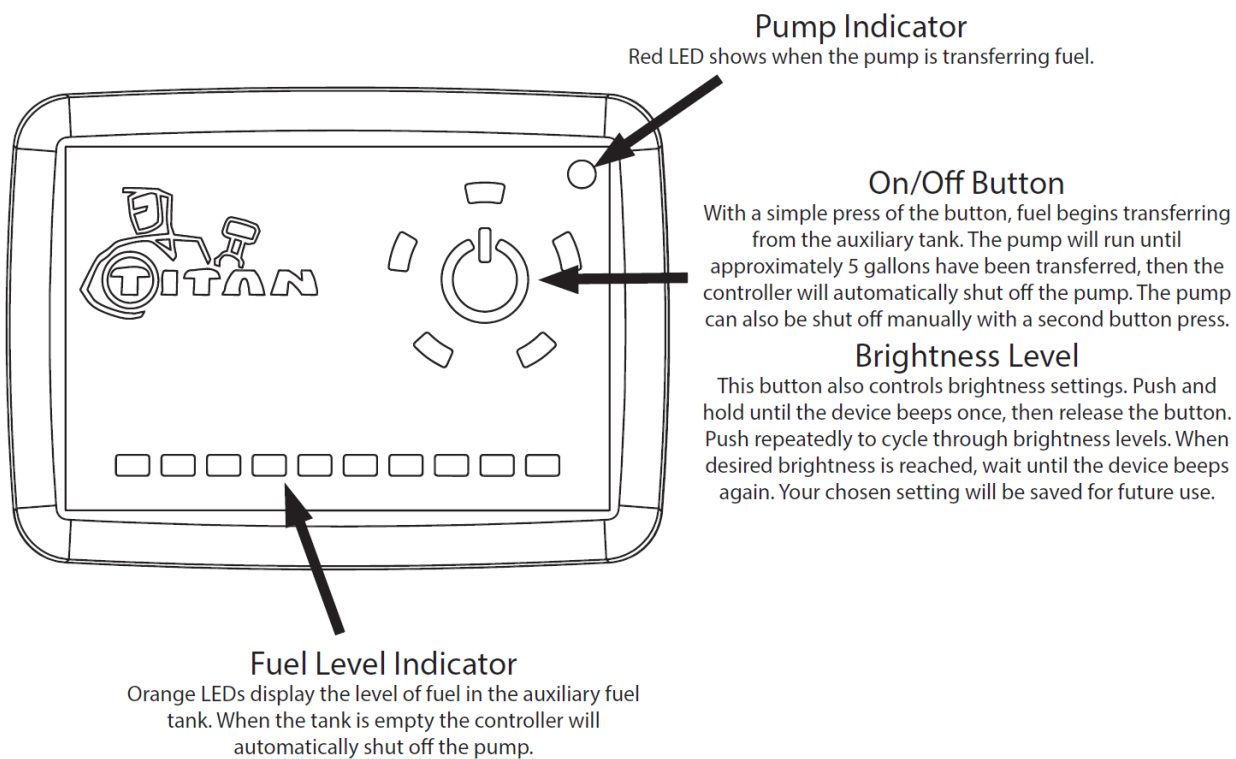
- 14 Using the supplied ring terminal, ground the black fuel pump wire to the chassis member. Use the second supplied black wire as needed. Attach the power wire on the pump to the supplied blue wire using the heat-shrink butt terminals.
- 15 Use the wire loom to protect the wires from the pump and sending unit. Run the wires along the frame up to the engine compartment.
- 16 Mount the TITAN™ Electronic Controller in the cab in a convenient location and complete wiring of the system according to the wiring diagram below. You may wish to drill a hole in the dash panel to route the wires from the controller out into the engine compartment.
- 17 Complete the wiring as per the wiring diagram below. Run the red wire from the controller into the fuse block. Trim as needed and strip the end. Using the fuse tap and the blade terminal, tie the red wire to a fuse block with 15A key-on power.

NOTE: Do NOT use an essential fuse for this tap, such as a fuse for a control module or a system with high amp draw. The running solenoid draws 1.5 Amps. We recommend tapping into a key-on, engine-off (KOEO) fuse.

TITAN™ Electronic Controller Pump Wiring Diagram



TITAN™ Electronic Controller

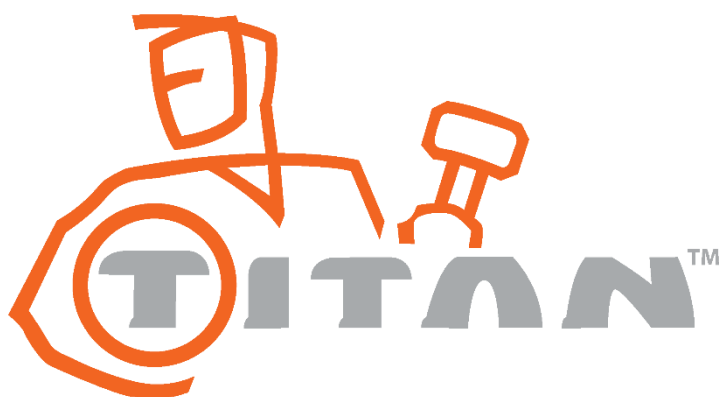


- 18 A fill neck assembly must be ordered separately from TITAN, your Ford dealer, or possibly the truck body manufacturer. Install it now on the auxiliary tank.
- 19 **Important:** Double check all fasteners and connections to be sure they are tight. Make sure all wires have been connected and grounded properly. Fill the tank and check for leaks.

Go to TITAN's website to view video installation instructions and tips.

Warranty is void if product is improperly installed.

For questions or customer service call (800) 728-4982



TITAN Fuel Tanks™
P.O. Box 2225
Idaho Falls, ID 83403 USA
Telephone (208) 522-1325, FAX (208) 529-2162
www.titanfueltanks.com

Document publish date: 3/12/24

For patent information: <http://titanfueltanks.com/patents>

TITAN Fuel Tanks are PROUDLY MADE IN THE USA!

©2024 Supertanks, LLC. All rights reserved.