

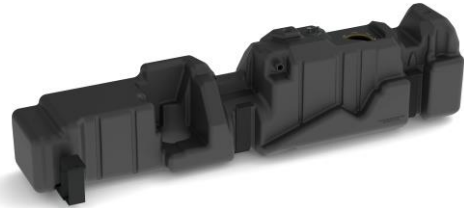
TITAN pt. no.: 01 0000 0156

Important: Please read these instructions carefully and completely before starting the installation.

TITAN Fuel Tanks

INSTALLATION INSTRUCTIONS

Gen6



Extended Capacity Replacement Tanks for GENERAL MOTORS Diesel Trucks

7010320: 60* Gallon (227* liters) Replacement Tank for 2020+ GM truck models 2500 HD & 3500 HD: Crew Cab Long Bed (8 ft.) This tank does NOT fit the 2-wheel drive trucks, it ONLY fits the 4-wheel drive trucks.

Required Tools:

- 1 ea. Ratcheting socket driver
- 1 ea. 13 mm socket
- 1 ea. 12" socket driver extension
- 1 ea. 3/8" end wrench
- 1 ea. 3/8" socket
- 1 ea. 1/2" socket
- 1 ea. 1/2" end wrench
- 1 ea. Medium flat blade screwdriver
- 1 ea. Needle nose pliers
- 1 ea. Torque wrench handle for socket
- 1 ea. Mallet or small hammer
- 1 ea. Razor blade or sharp bladed knife.
- 1 ea. Hook pick
- 1 ea. Diagonal Cutters
- 1 ea. Hacksaw

Recommended Optional Tools:

- 1 ea. Transmission jack
- 1 ea. Vehicle hoist
- 1 ea. Impact wrench
- 1 ea. Reciprocating saw

7010320 Crew Cab, Long Bed Parts List:

- 1 ea. Extra heavy-duty, 60* gallon, cross-linked polyethylene (XLHDPE) fuel tank for the following General Motors diesel truck: Crew Cab, Long Bed 2020-2021

Gen6

Tank Identification: "2020 GM CCLB"



Note: The underside of each tank has the above identification. Please check to be sure the tank is properly identified to your vehicle.

1 ea.	01 0000 0765	Cross-Link Polyethylene (XLHDPE) Molded Tank
1 ea.	02 0000 0197	BRIGHT ORANGE O-Ring
1 ea.	01 0113 0000	GM 2011+ Crew Cab Long Bed Strap Set
1 ea.	01 0123 0000	7010320 Front Support Assembly
1 ea.	99 0186 0000	Roll Over Valve Assembly with Hose and Vent Cap
1 ea.	99 0000 0185	TITAN™ Warranty Envelope
1 ea.	01 0000 0766	1-1/2" Fill Pipe ICV
1 ea.	01 0000 0156	2020 GM Crew Cab Instructions

IMPORTANT NOTICE: Before installation, be sure to thoroughly inspect the tank interior for ANY foreign debris!

I. Remove Original Equipment Tank

- | Step | Description |
|------|---|
| 1 | Place the vehicle on a hoist that leaves the entire underside of the frame unobstructed. |
| 2 | Drain all the fuel from the original equipment (OE) tank using a TITAN Fuel Caddy, pump, or siphon. |
| 3 | Remove OE tank plastic shield or shell (if applicable) from vehicle. |
| 4 | Support the OE tank. |
| 5 | Disconnect the fill hose from the OE tank's king nipple. |
| 6 | Disconnect fuel lines at the front of the OE tank near the water separator. Leave fuel lines in place, for the moment, on top of OE tank. |



- 7 Loosen and remove OE tank straps by undoing the bolts at outside of tank, then unhook straps on the inside to lower tank a few inches.
- 8 Disconnect vent line hose from sending unit at the top of the tank.
- 9 Disconnect fuel gauge electrical connection from sending unit.
- 10 Remove the OE tank from the vehicle.

II. Prepare Vehicle and Replacement Tank

Step Description

- 11 Use hook pick or flat head screwdriver to disconnect the fuel lines from the sending unit. Remove the fuel lines from the top of the OEM tank.



- 12 Use a mallet and screwdriver or punch to loosen the OEM hold-down ring on the sending unit by tapping it and turning it counter-clockwise. Remove the sending unit from the OE tank. Do NOT reuse factory O-ring seal.



- 13 The new TITAN fuel tank comes with a new O-ring gasket (packaged separately or included in the envelope with the instructions). Place the new O-ring into the groove on the new tank.
- 14 Carefully place the sending unit into the new TITAN replacement tank. Make sure the O-ring gasket is seated properly under the sending unit to seal correctly. Before installing the sending unit into the replacement tank, **BE SURE THE INSIDE OF THE TANK IS FREE OF DIRT OR DEBRIS.**
- 15 Make sure the tab on the sending unit is lined up with the “Tab Location” mark on the TITAN tank.



- 16 Place the top hold-down ring onto the lugs and the sending unit and turn it clockwise as far as it will go (see Fig. 5).



- 17 Retrieve the fuel lines from the OE tank and attach the suction and return fuel lines to the sending unit which is now installed in the replacement tank. After attaching them to the sending unit, lay the fuel lines into the fuel line groove provided in the top of the replacement tank.

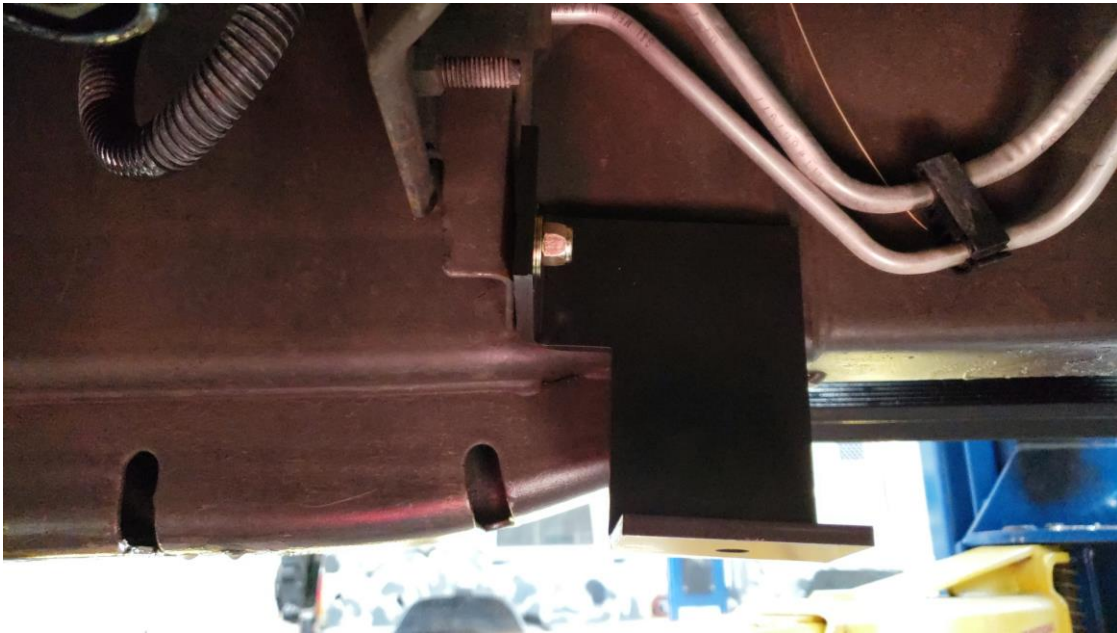
III. Install Replacement Tank in Vehicle

<u>Step</u>	<u>Description</u>
-------------	--------------------

- | | |
|----|---|
| 18 | Before installing the tank, the water separator bracket must be trimmed and deburred approximately 3.5 inches or to the edge of the eye hole on the bracket. After trimming, it is recommended to paint exposed raw metal edge to prevent rust. |
|----|---|



- 19 The TITAN tank straps will reuse the original equipment mounting brackets and bolts. Hang the inboard side in the brackets first.
- 20 Use the provided 3/8" bolt, nut, and washer to attach the provided upper front support to the water separator bracket. This bracket already has a pre-drilled hole that will line up with the front support.



- 21 Place the tank on a transmission jack. Then lift the tank high enough to reconnect the sending unit electrical connection and the vent hose to the sending unit.



- 22 Once all connections are securely attached, lift the tank the rest of the way into place with the jack.
- 23 Attach the lower section of the front support with the provided $\frac{1}{2}$ " bolts and tighten securely.



- 24 Insert 1-1/2" Fill Pipe ICV into the end of the fill hose with the "Flow" arrow pointing towards the fuel tank. This will need to be inserted deep enough to allow the fill hose to fit completely over the king nipple.



- 25 Attach the fill hose to the king nipple on the replacement fuel tank and clamp tightly. Reconnect the fuel lines at the top front of the tank.
- 26 Finish attaching the tank straps and tighten them to OE specifications.
- 27 Double check ALL mounting hardware, clamps, bolts, etc. are properly installed and TIGHT.
- 28 Lower vehicle, fill tank with diesel fuel (do not "top off") and check for leaks.

* All capacities are approximate

Technical Service Bulletin:

Updated September 2022

Affected vehicles: 2019+ GM 6.6L diesel trucks.

Issue: Fuel gauge drops to empty after Initial Install and during normal operation.

Explanation: GM trucks have the ability through programming and monitoring to know exactly how much fuel is in the tank, as well as fuel consumption based on miles driven and fuel economy. Any large capacity fuel tank causes the float to move slower than the computer thinks is acceptable. When the computer sees this, it will run a system check and drop the fuel gauge to empty. When the fuel level comes off full, the gauge should return to the correction position after restarting the vehicle.

Solution: Although we were told early on that trucks have fixed themselves after several tanks of fuel when following a specific process, we are no longer able to confirm this or any other permanent fix for this issue. If this is a concern for you, we recommend using an aftermarket digital monitor to confirm accurate fuel level when this occurs.

Be sure to return the completed warranty registration for your new Titan Fuel Tank; or you can register on-line at www.titanfueltanks.com

You will find your tank's serial number located on the bottom of the tank.

Write your tank's Serial Number here: _____

A tank must be registered within sixty (60) days of receipt for the warranty to be valid.

**Warranty is void if product is improperly installed.
For questions or customer service call (800) 728-4982**

TITAN Fuel Tanks

P.O. Box 2225

Idaho Falls, ID 83403 USA

Telephone (208) 522-1325, FAX (208) 529-2162

Revised 09.26.22 ©2022 Supertanks, LLC