

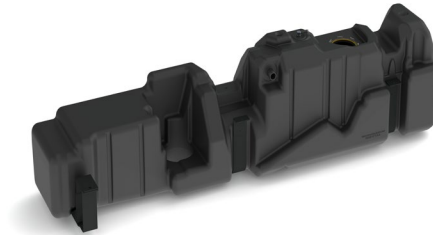
TITAN pt. no.: 01 0000 0155

**Important:** Please read these instructions carefully and completely before starting the installation.

## TITAN Fuel Tanks

### INSTALLATION INSTRUCTIONS

# Gen6



#### ***Extended Capacity Replacement Tanks for GENERAL MOTORS Diesel Trucks***

***7010317: 66\* Gallon (250\* liters) Replacement Tank for 2017-2019 GM truck models 2500 HD & 3500 HD: Crew Cab Long Bed (8 ft.)***

#### ***Required Tools:***

- 1 ea. Ratcheting socket driver
- 1 ea. 13 mm socket
- 1 ea. 12 inch long socket driver extension
- 1 ea. 8 mm end wrench
- 1 ea. 8 mm socket
- 1 ea. 9/16 inch socket
- 1 ea. 9/16 end wrench
- 1 ea. Medium flat blade screwdriver
- 1 ea. Needle nose pliers
- 1 ea. Torque wrench handle for socket
- 1 ea. Mallet or small hammer
- 1 ea. Razor blade or sharp bladed knife.
- 1 ea. Hook pick
- 1 ea. Diagonal Cutters
- 1 ea. Hacksaw

#### ***Recommended Optional Tools:***

- 1 ea. Transmission jack
- 1 ea. Vehicle hoist
- 1 ea. Impact wrench
- 1 ea. Reciprocating saw

**7010317 Crew Cab, Long Bed Parts List:**

1 ea. Extra heavy-duty, 66\* gallon, cross-linked polyethylene (XLHDPE) fuel tank for the following General Motors diesel truck: Crew Cab, Long Bed 2017-2019

**Gen6**

Tank Identification: "2017-2019 GM CCLB"



**Note:** The underside of each tank has the above identification. Please check to be sure the tank is properly identified to your vehicle.

1 ea.	01 0000 0764	Cross-Link Polyethylene (XLHDPE) Molded Tank
1 ea.	02 0000 0197	BRIGHT ORANGE O-Ring
1 ea.	01 0113 0000	GM 2011+ Crew Cab Long Bed Strap Set
1 ea.	98 0000 0403	Titan Torque Ring- Gen 6
1 ea.	01 0128 0000	7010317 Front Support Assembly
1 ea.	99 0186 0000	Roll Over Valve Assembly with Hose and Vent Cap
1 ea.	99 0000 0185	TITAN™ Warranty Envelope

***IMPORTANT NOTICE:*** Before installation, be sure to thoroughly inspect the tank interior for ANY foreign debris!

## I. Remove Original Equipment Tank

<u>Step</u>	<u>Description</u>
1	Place the vehicle on a hoist that leaves the entire underside of the frame unobstructed.
2	Drain all the fuel from the original equipment (OE) tank using a TITAN Fuel Caddy, pump or siphon.
3	Remove OE tank plastic shield or shell (if applicable) from vehicle.
4	Support the OE tank.
5	Disconnect the fill hose from the OE tank's king nipple.
6	Disconnect fuel lines at the front of the OE tank near the water separator. Leave fuel lines in place, for the moment, on top of OE tank.



- 7 Loosen and remove OE tank straps by undoing the bolts at outside of tank, then unhook straps on the inside to lower tank a few inches.

- 8 Disconnect vent line hose from sending unit at the top of the tank.
- 9 Disconnect fuel gauge electrical connection from sending unit.
- 10 Remove the OE tank from the vehicle.

## II. Prepare Vehicle and Replacement Tank

Step   Description \_\_\_\_\_

- 11 Use hook pick or flat head screwdriver to disconnect the fuel lines from the sending unit. Remove the fuel lines from the top of the OEM tank.



- 12 Use a mallet and screwdriver or punch to loosen the OEM hold-down ring on the sending unit by tapping it and turning it counter-clockwise. Remove the sending unit from the OE tank. Do NOT reuse factory O-ring seal.



- 13 The new TITAN fuel tank comes with the sending unit mounting hardware, the O-ring gasket and Torque Ring top hold-down ring, (packaged separately or included in the envelope with the instructions). Place the new O-ring into the groove on the new tank.
- 14 Carefully place the sending unit into the new TITAN replacement tank. Make sure the O-ring gasket is seated properly under the sending unit to seal correctly. Before installing the sending unit into the replacement tank, **BE SURE THE INSIDE OF THE TANK IS FREE OF DIRT OR DEBRIS.**
- 15 Make sure the tab on the sending unit is lined up with the “Tab Location” mark on the TITAN tank.



- 16 Place the included TITAN Torque Ring, top hold-down ring onto the lugs and the sending unit and turn it clockwise as far as it will go (see Fig. 5).



- 17 Retrieve the fuel lines from the OE tank and attach the suction and return fuel lines to the sending unit which is now installed in the replacement tank. After attaching them to the sending unit, lay the fuel lines into the fuel line groove provided in the top of the replacement tank. If desired, it is good practice to tie the two lines together with snap ties.

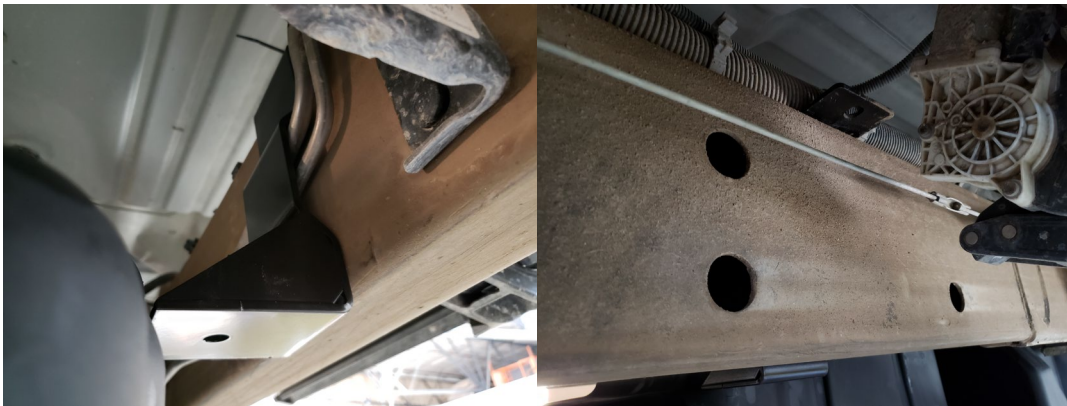
### III. Install Replacement Tank in Vehicle

<u>Step</u>	<u>Description</u>
-------------	--------------------

- |    |  |
|----|--|
| 18 | Before installing the tank, the water separator bracket must be trimmed and deburred approximately 2.5 inches or to the edge of the eye hole on the bracket. |
|----|--|



- 19 The TITAN tank straps will reuse the original equipment mounting brackets and bolts. Hang the inboard side in the brackets first.
- 20 Insert the upper portion of the front support between the top of the frame and the wiring harness.



- 21 Place the tank on a transmission jack. Then lift the tank high enough to reconnect the sending unit electrical connection and the vent hose to the sending unit.



- 22 Once all connections are securely attached, lift the tank the rest of the way into place with the jack.
- 23 Attach the lower section of the front support and secure the top and bottom bolts down securely. (See Fig. 9)



- 24 Attach the fill hose to the king nipple on the replacement fuel tank and clamp tightly. Reconnect the fuel lines at the top front of the tank.



- 25 Finish attaching the tank straps and tighten them to OE specifications.
- 26 Double check ALL mounting hardware, clamps, bolts, etc. are properly installed and TIGHT.
- 27 Lower vehicle, fill tank with diesel fuel (do not “top off”) and check for leaks.

\* All capacities are approximate

**Be sure to return the completed warranty registration for your new Titan fuel tank; or you can register on-line at [www.titanfueltanks.com](http://www.titanfueltanks.com)**

**You will find your tank’s serial number located on the bottom of the tank.**

**Write your tank’s Serial Number here: \_\_\_\_\_**

**A tank must be registered within sixty (60) days of receipt for the warranty to be valid.**

**Warranty is void if product is improperly installed.  
For questions or customer service call (800) 728-4982**

**TITAN Fuel Tanks**

**P.O. Box 2225**

**Idaho Falls, ID 83403 USA**

**Telephone (208) 522-1325, FAX (208) 529-2162**

Revised 11.30.20

©2020 Supertanks, LLC