



**Body Armor 4x4 by Tolar Mfg.**

**258 Mariah Circle, Corona CA 92879**

**Ph: 951-808-0750**

**Customer service hours:**

**8am to 4pm Pacific Time**

**[www.bodyarmor4x4.com](http://www.bodyarmor4x4.com)**



**INSTALLATION INSTRUCTIONS FOR TOYOTA TUNDRA TN-2961 REAR BUMPER**

**FITS 2007-2012 TOYOTA TUNDRA**

**\*\* Inspect bumper and all parts prior to installation. Contact us at 951-808-0750 for missing parts.**

**Hardware list:**

	TC-2961
QTY 10	M12X1.75X40mm
QTY 10	M12X1.75 nut
QTY 30	M12 Washer

**Removing Factory bumper:**

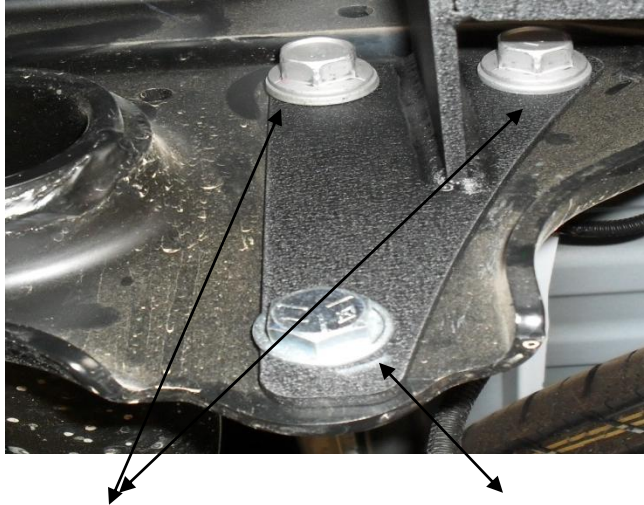
- 1 Remove plastic center section from top of rear bumper, and from under license plate
- 2 Disconnect license plate light. Remove factory light and retain for later use.
- 3 Remove bolts securing bumper skin to frame and receiver brackets. Retain hardware for later use.
- 4 Remove bumper skin at this time.

**Bumper Installation For Tn-2961:**

**We recommend you have help with lifting of the rear bumper to avoid injury or damage to bumper and vehicle.**

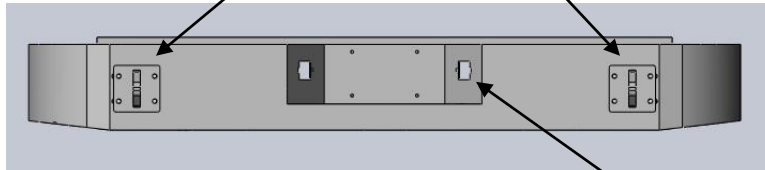
- 1 Remove 2 right side bolts securing bumper and or receiver mount to frame only





- 2 Install right side bracket with factory bolts and M12X1.75X40mm bolts and hardware. Leave loose at this time.
- 3 Repeat above step on left side.

- 4 Using M12x1.75x40mm bolts, washers and nuts attach TN-2961 with D-ring plates to bumper brackets.



- 5 Align bumper to body and tighten all hardware at this time
- 6 Check for clearance when tailgate is open. Reinstall factory license plate lights.
- 7 Install d-rings.

**Installing TC-5293 Swing Arm tire Carrier to TC-2961**  
**Grease bearings and bearing races at this time.**

- 1 Install races into spindle mount.
- 2 Install large bearing and seal in spindle mount
- 3 Using M12x1.75x40mm bolts, washers and nuts install spindle mount and latch mount to bumper and bumper brackets. Leave loose at this time.



- 4 Install swing arm onto pivot mount and install small bearing, large washer, and castle nut. Tighten castle nut to 100 ft/lbs.
- 5 Install dust cap with cup side up.
- 6 Install cam lock latch to swing arm using four button head screws with washers and tighten.



**Note: the properly adjusted cam lock will close the carrier tight against the stop and can be latched using one hand with 20 to 25 pounds of force.**

- 7 Loosely install the tire carrier plate to swing arm.
- 8 Set spare tire on tire carrier plate. With tire tight and square against swing arm leave 3/8" gap between wheel and carrier plate.
- 9 Tighten carrier plate at this time.
- 10 Tighten spare tire lug nuts at this time.

**Note: Recheck all hardware after the first couple hundred miles. It is advised to inspect the bumper and hardware periodically.**