



Body Armor 4x4 by Tolar Mfg.
258 Mariah Circle, Corona CA 92879
Ph: 951-808-0750
Customer service hours:
7 am to 4:30 pm M-Th
Fridays 8am-12PM
Pacific Time



Installation instructions for 2007-2012 Toyota FJ: PN FJ-19336

**** Inspect bumper and all parts prior to installation. Contact us at 951-808-0750 for missing parts.**

Hardware list:

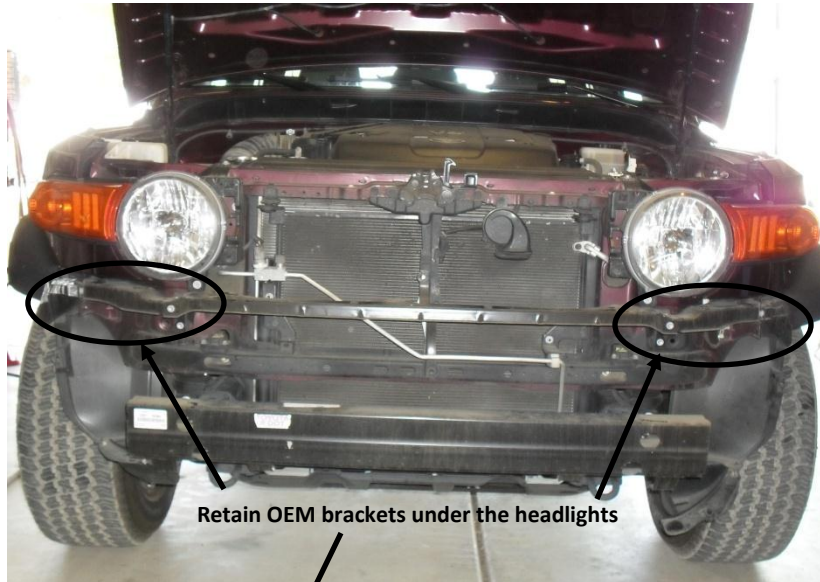
QTY 4 M10X30MX1.5 HEX BOLT
QTY 12 M10 FLAT WASHER
QTY 8 M10X35MX1.5 HEX BOLT
QTY 12 M10 WASHER
QTY 4 M10X25MX1.5 HEX BOLT
QTY 2 M12X45X1.5
QTY 2M12 FLAT WASHERS
QTY 4 10M HEX NUTS
QTY 4 10M LOCK WASHERS
QTY 2 "L" BRACKETS

Removing Factory bumper:

- 1 Remove Factory grill from truck by removing two screws from top.



- 2 Remove all fasteners from wheel well top of bumper fascia, and from bottom of bumper fascia. If equipped with driving lights disconnect wiring harness at this time.
- 3 Remove front bumper fascia. If installing factory driving lights on new front bumper, remove at this time.



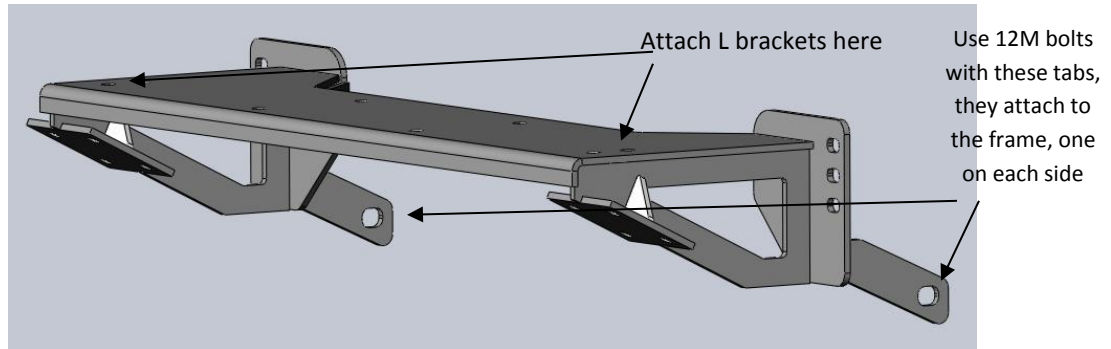
- 4 Remove front bumper structure and retain factory hard ware.
- 5 Remove two fascia supports, one on each side of vehicle.



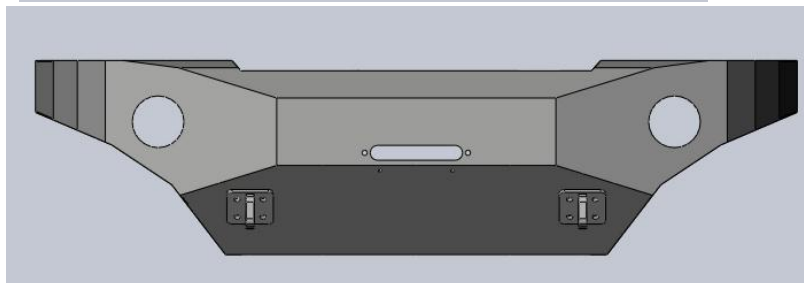
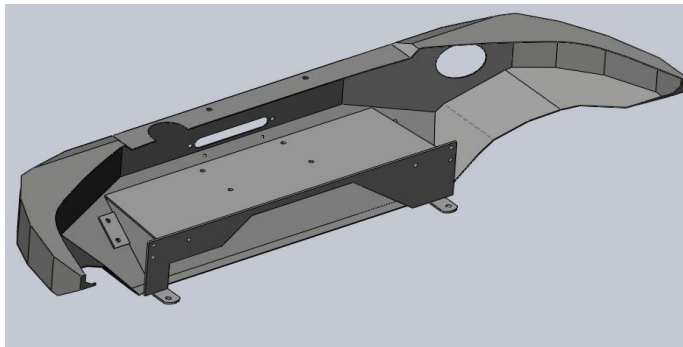
Bumper Installation FJ-19336:

We recommend you have help with lifting of the front bumper to avoid injury or damage to bumper and vehicle.

- 1 Install winch plate onto the frame studs using factory hardware used for front bumper. (If installing a winch install at this time) Use low profile winch, we do not recommend a winch larger than 10,000 pound capacity.
- 2 Loosely attach the two "L" brackets on to the winch plate, the slotted ends facing down on the winch plate. Use the 4 10M x 25M hex bolts, flat washers. The top holes on the L bracket will line up with the tabs on the bumper.



- 3 Attach auxiliary lights to the light tabs before installing bumper shell.
- 4 Lift the bumper shell over the sub-frame and winch, check for clearance of the winch control box. The shell will fit over the OEM brackets under the headlights. Once in place use the 8 10Mx35 hex bolts and flat washers with shackle plates to attach the shell to the sub-frame. Adjust for clearance under the headlights, and then tighten. Attach L bracket to bumper tabs using 10Mx30M hex bolts and tighten. Note** Trimming of the bumper near the tow hooks may be necessary in late model (2010-2013) or removal of OEM tow hooks this will ease installation. Relocating the windshield washer bottle is required on late model (2011-2013)

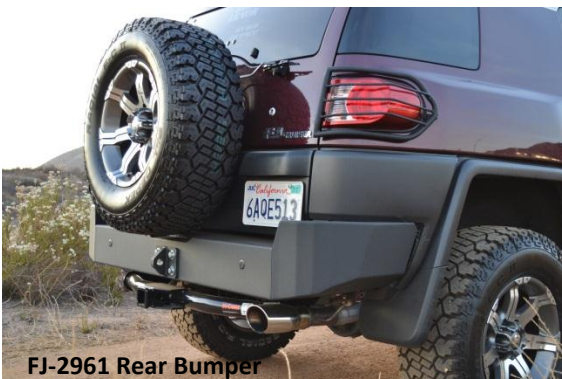


- 5 Check alignment to body and tighten all hardware.
- 6 Cut inner plastic fender as needed to clear front tires.

Note: Recheck all hardware after the first couple hundred miles. It is advised to inspect the bumper and hardware periodically.

Do not return this product to the dealer if there is a question or concern about a possible defect, contact us directly and we will make every effort to resolve the issue as quickly as possible. 1-951-808-0750 or kneubauer@tolarmfg.com

**** Body Armor warranty policy: Body Armor 4x4 warrants this product to be free from manufacturer defects for the life of the product. Damage to the product is not considered a defect; abuse of the product is not considered a defect. If fitment issues occur during the installation is not considered to be a defect, call our office to resolve fitment or installation questions. 951-808-0750. Body Armor 4x4 warranty's the paint for 90 days from date of purchase. Rust is not a warrantable defect as we cannot control proper maintenance of the product or environmental variables. We use the highest quality powder coat process as well as an E-Coat undercoating, this allows for the maximum corrosion resistance available. Proper maintenance is required to maintain the long term luster of the paint. Touch rock chips with a quality flat black spray paint or automotive touch up paint.**



Other Body Armor products for the FJ Cruiser

