

PART NUMBER

K-10-003



INSTALLATION VIDEO: To see a video of these installations, please visit our youtube page - youtube.com/superspringsinternational.
Front - <https://youtu.be/AKhg6VqjOKc> | Rear - <https://youtu.be/dbmfmZU6fI>

BEFORE YOU BEGIN

APPLICATION(S)

› Ford F-53, 20--22k
(2008 - present)

TOOLS REQUIRED

- › Floor jack
- › Safety jack stands
- › 15 & 17mm sockets
- › 9/16 wrench
- › 9/16 socket
- › Ratchet & extensions
- › Drill
- › 7/16" Drill Bit

REAR PARTS LIST

Item	Part #	Description	QTY
A	511401	SumoSprings Yellow -54	2
B	512037	Upper frame bracket	2
C	512108	Lower Bracket	2
D	512042	U-bracket strap	2
E	512207	3/8-16 x 3/4" serrated flange hex bolt	6
F	512301	3/8-16 x 1.5" serrated flange hex bolt	8
G	512247	3/8-16 x 4" carriage bolts	4
H	512302	3/8-16 x Top lock hex flange nuts	12

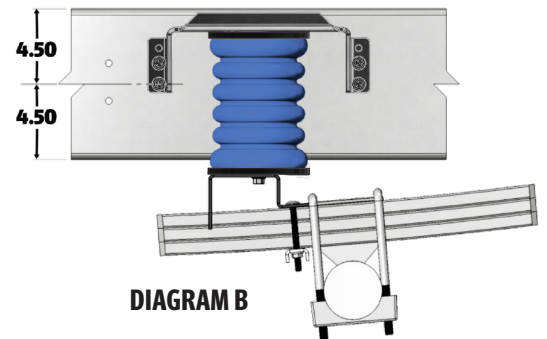
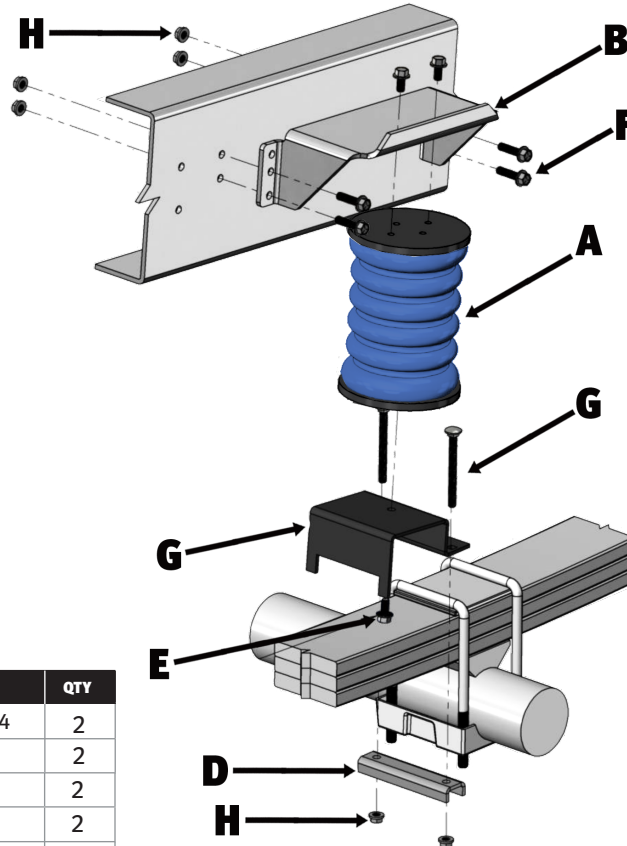


DIAGRAM B

REAR INSTALLATION

Part Number: K-10-003

› Product Line: SUMOSPRINGS FRONT & REAR

Page 1

SuperSprings International, Inc.

505 Maple Avenue
Carpinteria, CA 93013

Installation Support

+1 (800) 898-0705
support@supersprings.com

superspringsint.com

SAFETY NOTICE: We recommend installation be done by a professional or persons with sound mechanical knowledge.

WARNING: These instructions are a general guide for installation. SuperSprings International, Inc. assumes no liability for the actual installation process. Consumers and installers should apply common automotive safety practices when raising and working on any vehicle. **Do not put yourself in a position where, if the vehicle were to move unexpectedly, you may be injured.** SuperSprings' products are designed to improve vehicle ride quality. Do not load any vehicle beyond the manufacturer's specifications.

Never exceed the manufacturer's Gross Vehicle Rating (GVWR) located on your vehicles identification tag.

BEFORE INSTALLATION: Ensure the vehicle is on a level surface, the parking brake is ON, with the ignition OFF, and place blocks in front of and behind the front tires to prevent the vehicle from moving.

DURING AND/OR AFTER INSTALLATION: Ensure emergency brake cables are not touching the SuperSprings. Secure any cables out of the way with zip ties or by re-routing. **Ensure all A/C lines, brake cables, and frame are clear of contact or interference.**

REV. 001 | JULY 2021

PART NUMBER

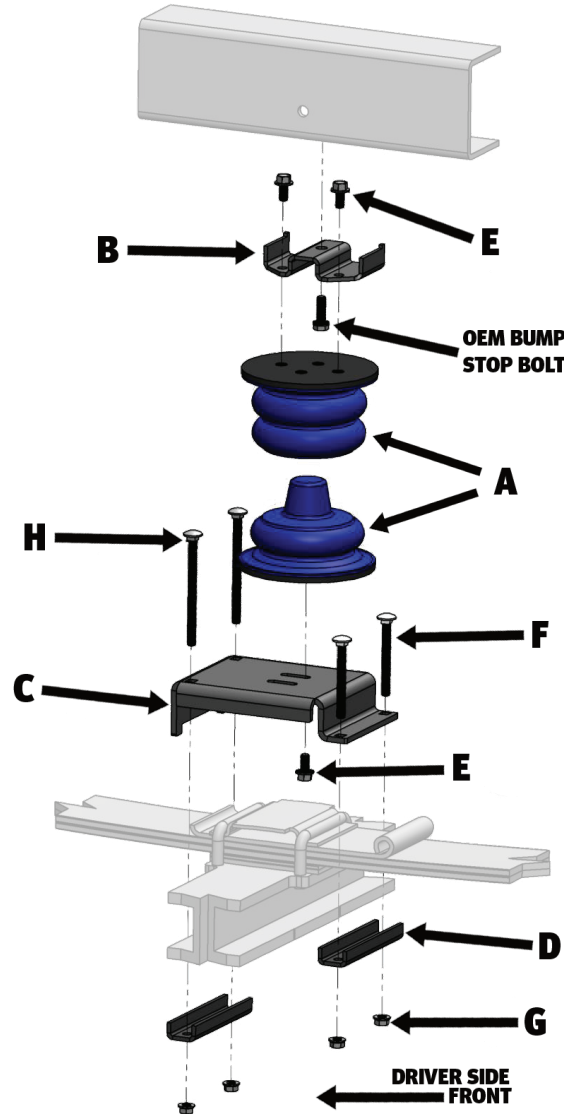
K-10-003



INSTALLATION VIDEO: To see a video of these installations, please visit our youtube page - youtube.com/superspringsinternational.
Front - <https://youtu.be/AKhg6VqjOKc> | Rear - <https://youtu.be/dbmfmZU6fFI>

BEFORE YOU BEGIN

Item	Part #	Description	QTY
A	511405 511403	SumoSprings Blue -40 SumoSprings Yellow-54	2
B	512037	Upper frame bracket	2
C	512108	Lower bracket	2
D	512042	U- bracket strap	2
E	512207	3/8-16 x 3/4" Serrated flange hex bolt	6
F	512301	3/8-16x 1.5" Serrated flange hex bolt	8
G	512292	3/8-16 X 5" Carriage bolts	4
H	512302	3/8-16 Top lock flange nuts	12



FRONT INSTALLATION

Part Number: K-10-003

Product Line: SUMOSPRINGS FRONT & REAR

Page 2

SuperSprings International, Inc.
505 Maple Avenue
Carpinteria, CA 93013

Installation Support
+1 (800) 898-0705
support@supersprings.com

superspringsint.com

SAFETY NOTICE: We recommend installation be done by a professional or persons with sound mechanical knowledge.
WARNING: These instructions are a general guide for installation. SuperSprings International, Inc. assumes no liability for the actual installation process. Consumers and installers should apply common automotive safety practices when raising and working on any vehicle. **Do not put yourself in a position where, if the vehicle were to move unexpectedly, you may be injured.** SuperSprings' products are designed to improve vehicle ride quality. Do not load any vehicle beyond the manufacturer's specifications.

Never exceed the manufacturer's Gross Vehicle Rating (GVWR) located on your vehicles identification tag.
BEFORE INSTALLATION: Ensure the vehicle is on a level surface, the parking brake is ON, with the ignition OFF, and place blocks in front of and behind the front tires to prevent the vehicle from moving.
DURING AND/OR AFTER INSTALLATION: Ensure emergency brake cables are not touching the SuperSprings. Secure any cables out of the way with zip ties or by re-routing. **Ensure all A/C lines, brake cables, and frame are clear of contact or interference.**

PART NUMBER

K-10-003



IMPORTANT NOTICE: Your part may have been loosely preassembled to show the final product as it will be once installed on your vehicle. Please disassemble the product before proceeding to the installation.

INSTALLATION

1. Park vehicle on level hard surface. Place wheel blocks in front and behind the front wheels to prevent rolling. Observe all safety precautions and wear safety glasses.
2. Raise the rear of the vehicle allowing the axle to hang free and rest the frame on the safety jack stands rated for the weight of the vehicle. Removal of the rear wheels is optional.
3. Attach the upper frame bracket [ITEM B] to the top of the SumoSpring [ITEM A] using two 3/18-16x3/4” serrated flange hex bolts [ITEM E]. Attach the Lower bracket [ITEM C] to the bottom of the SumoSpring [ITEM A] using one 3/18-16x3/4” serrated flange hex bolt [ITEM E].
4. Insert two 3/8-16 x 4” carriage bolts [ITEM G] into the two square openings in the lower bracket [ITEM C] in such a way that they straddle the factory spring-pack. Position the lower bracket so that the shorter end down captures the factory u-bolt (see Diagram D).
5. Secure the lower bracket [ITEM C], to the factory spring-pack using the u-bracket strap [ITEM D], the two carriage bolts [ITEM G], two 5/16” washers and two 3/8-16 Top-Lock nuts.

[NOTE: On passenger side, position u-bracket strap [ITEM D] as shown in Diagram C to clear brake caliper bolt.]



DIAGRAM C



DIAGRAM D

PART NUMBER

K-10-003



IMPORTANT NOTICE: Your part may have been loosely preassembled to show the final product as it will be once installed on your vehicle. Please disassemble the product before proceeding to the installation.

INSTALLATION

6. Repeat steps three through five on the other side of the vehicle.
 7. Jack up axle until Upper Frame Bracket [ITEM B] is in correct position on frame with the two bottom holes aligned with the existing 5/8" holes in the frame as shown in Diagram D. Mark and drill two upper holes using a 7/16" drill bit (ensure clearance on all cables/service lines inside the frame prior to drilling). If the two existing holes mentioned above are not in the frame then they will also need to be drilled. Drill these two holes exactly mid height on the frame (this occurs on vehicles post 2008) as seen in Diagram B.
 8. Repeat step seven on opposite side.
 9. Moving to the front, remove the factory bump stop from the underside of the frame. Save the factory hardware for the installation of the upper bracket. [ITEM B].
 10. Insert two 3/8-16 flanged hex bolts [ITEM E] into the outside holes of the upper bracket [ITEM B] and allow it to hang freely. Using the factory bump stop bolt and nut you saved, attach the upper bracket [ITEM B] to the bottom of the frame in the same position as the factory bump stop.
 11. Bolt the upper half of the SumoSpring [ITEM A] to the upper bracket [ITEM A] using the previously installed bolts and tighten securely with a wrench.
 12. Attach the lower bracket [ITEM C] to the bottom half of the SumoSpring [ITEM A] in the correct orientation using a single 3/8"-16 flanged hex bolt [ITEM E].
- [NOTE: The lower bracket attachment utilizes the inside slot or the slot closest to the frame (or furthest from the wheel). Leave this bolt loose for now.]
13. Place the lower bracket with the attached SumoSpring onto the leaf pack above the axle. Adjust the position of the lower half of the SumoSpring to align with the upper half and mark its position on the lower bracket with a pencil. Remove the lower assembly from the leaf pack and securely tighten the bolt while keeping the SumoSpring in the marked position.
 14. Insert two 3/8"-16 X 3 1/2" and two 3/8"-16 X 5.5" carriage bolts [ITEM F&H] through the four square openings in the lower bracket and place the lower assembly back on the leaf pack. Be sure that upper and lower SumoSpring halves are aligned.

Part Number: K-10-003

► Product Line: SUMOSPRINGS FRONT & REAR

Page 4

SuperSprings International, Inc.

505 Maple Avenue
Carpinteria, CA 93013

Installation Support

+1 (800) 898-0705
support@supersprings.com

superspringsint.com

SAFETY NOTICE: We recommend installation be done by a professional or persons with sound mechanical knowledge.

WARNING: These instructions are a general guide for installation. SuperSprings International, Inc. assumes no liability for the actual installation process. Consumers and installers should apply common automotive safety practices when raising and working on any vehicle. **Do not put yourself in a position where, if the vehicle were to move unexpectedly, you may be injured.** SuperSprings' products are designed to improve vehicle ride quality. Do not load any vehicle beyond the manufacturer's specifications.

Never exceed the manufacturer's Gross Vehicle Rating (GVWR) located on your vehicles identification tag.

BEFORE INSTALLATION: Ensure the vehicle is on a level surface, the parking brake is ON, with the ignition OFF, and place blocks in front of and behind the front tires to prevent the vehicle from moving.

DURING AND/OR AFTER INSTALLATION: Ensure emergency brake cables are not touching the SuperSprings. Secure any cables out of the way with zip ties or by re-routing. **Ensure all A/C lines, brake cables, and frame are clear of contact or interference.**

REV. 001 | JULY 2021

PART NUMBER

K-10-003



IMPORTANT NOTICE: Your part may have been loosely preassembled to show the final product as it will be once installed on your vehicle. Please disassemble the product before proceeding to the installation.

INSTALLATION

15. Attach the u-bracket straps [ITEM D] to the carriage bolts using four 3/8" top-lock nuts [ITEM G]

16. Repeat steps 3 - 9 on the other side of the vehicle.

[NOTE: The factory bump stop on the passenger side utilizes a weld-nut on the inside of the frame, so you will only remove the bolt.]

17. Raise the vehicle to allow room to remove the safety jack stands, carefully lower your vehicle to the hard surface, and remove the blocks from the wheels.

18. Register the warranty for your SuperSprings International part. A warranty card can be found in the box your part came in.