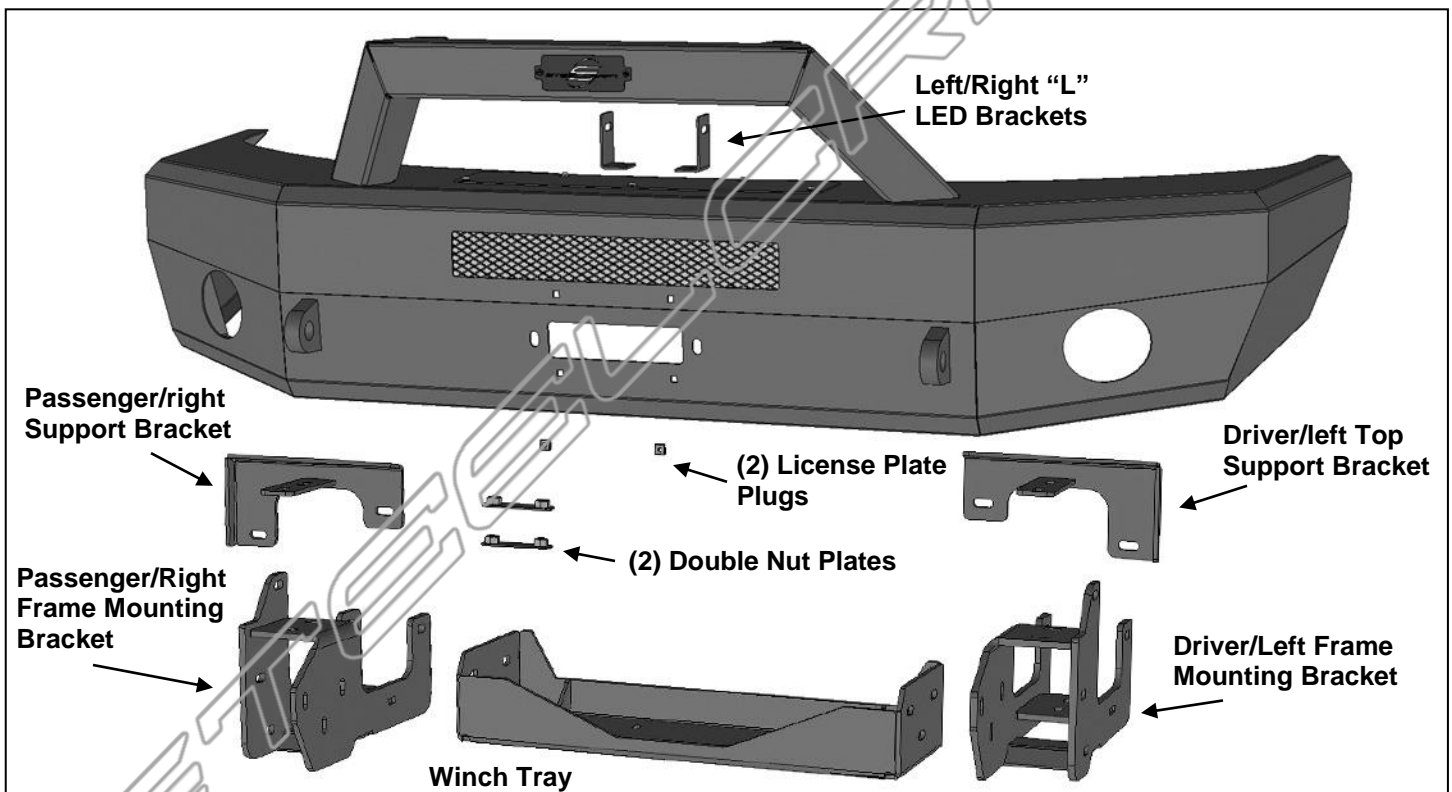


**ELEVATION BULL NOSE FRONT BUMPER
2009-14 FORD F150**

PARTS LIST:

| | | | |
|---|--|----|--------------------------------|
| 1 | Front Bumper Assembly | 24 | 12-1.75mm x 50mm Hex Bolts |
| 1 | Driver/Left Frame Mounting Bracket | 48 | 12mm x 37mm x 3mm Flat Washers |
| 1 | Passenger/Right Frame Mounting Bracket | 4 | 12mm Lock Washers |
| 1 | Driver/Left Top Support Bracket | 22 | 12-1.75mm Nylon Lock Nuts |
| 1 | Passenger/Right Top Support Bracket | 2 | 8-1.25mm x 25mm Hex Bolt |
| 1 | Driver/left LED Light Brackets | 2 | 8-1.25mm x 16mm Hex Bolt |
| 1 | Passenger/right LED Light Brackets | 6 | 8mm x 24mm x 2mm Flat Washer |
| 1 | Winch Access Cover | 4 | 8mm Lock Washer |
| 5 | 6mm Button Head Combo Bolt | 2 | 8mm Hex Nut |
| 1 | 4mm Wrench | 6 | 6mm x 25mm Hex Bolts |
| 2 | Plastic Plugs for license plate mount | 12 | 6mm x 18mm x 1.6 Flat Washers |
| 2 | 12mm Double Nut Plates | 6 | 6mm Nylon Lock Nuts |
| 2 | 12-1.75mm x 160mm Hex Bolts | | |



PROCEDURE:

REMOVE CONTENTS FROM BOX. VERIFY ALL PARTS ARE PRESENT. READ INSTRUCTIONS CAREFULLY BEFORE STARTING INSTALLATION. BUMPER IS HEAVY, ASSISTANCE IS HIGHLY RECOMMENDED TO AVOID POSSIBLE INJURY OR DAMAGE TO THE VEHICLE.

1. Remove the license plate and bracket. Open the hood and remove the hardware attaching the hood release lever to the steel bracket attached to the back of the bumper, **(Figure 1)**. Also remove the screws attaching the back of the plastic fascia to the hood release bracket. On models with factory fog lights, unplug both lights and release the wiring harness from the clips attached to the back of the bumper. Move harness away from bumper.
2. Place blocks or jack stands under the front bumper to support it during mounting bolt removal. Once the bumper has been safely supported, remove the (2) large hex nuts from the back of each bumper bracket, **(Figure 2)**. **WARNING!** Assistance is required to hold the bumper in place during bolt removal to prevent the bumper from falling. Carefully slide the bumper off over the tow hooks, if equipped. Next, remove the air dam from the bottom of the frame, if equipped, **(Figure 3)**.

**ELEVATION BULL NOSE FRONT BUMPER
2009-14 FORD F150**

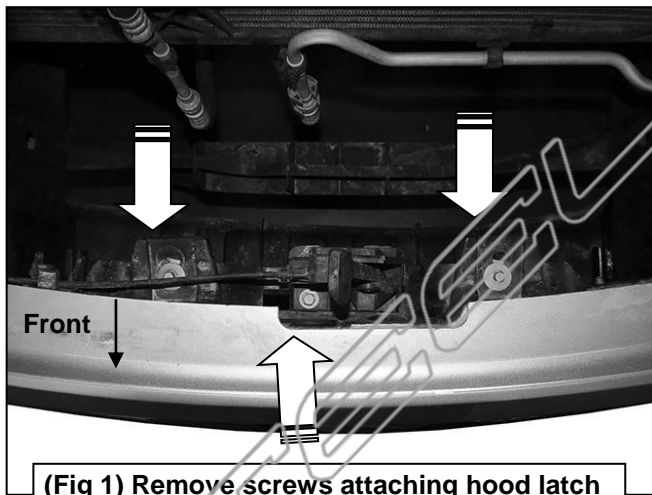
3. Remove the driver side tow hook, (if equipped), from the bottom of the frame. Leave the factory double nut plate inside the frame, **(Figure 4)**. On models without tow hook, insert (1) Double Nut Plate into the open end of the frame, **(Figure 4)**. Repeat to prepare the passenger/right side.
4. Remove the steel bracket attached to the back of the original bumper for the hood release, **(Figure 5)**. Reuse the factory hardware to attach the bracket to the mounting tabs on the back of the plastic fascia. Reattach the hood release lever to the steel bracket, **(Figure 6)**. Tighten hardware at this time.
5. Next, select the driver side Frame Mounting Bracket, **(Figure 7)**. Attach the Bracket to the bottom of the frame and Double Nut Plate with (2) 12mm x 50mm Hex Bolts, (2) 12mm Lock Washers and (2) 12mm Flat Washers, **(Figures 7 & 8)**. Leave hardware loose at this time.
6. Insert (1) 12mm x 160mm Long Hex Bolt with (1) 12mm Flat Washer through the outside of the mounting tab on the Frame Bracket, through the frame and inner tab, **(Figure 7)**. Secure with (1) 12mm Flat Washer and (1) 12mm Nylon Lock Nut, **(Figures 7 & 8)**. Do not fully tighten hardware.
7. Select the driver side Top Support Bracket, **(Figure 9)**. Attach the Support Bracket to the bumper mounting flange on the frame with (2) 12mm x 50mm Hex Bolts, (4) 12mm Flat Washers and (2) 12mm Nylon Lock Nuts, **(Figures 9 —11)**. Line up the tab on the Support Bracket with the top of the Frame Bracket. Attach the Support Bracket to the Frame Bracket with (2) 12mm x 50mm Hex Bolts, (4) 12mm Flat Washers and (2) 12mm Nylon Lock Nuts, **(Figures 10 & 11)**. **NOTE:** Models with tow hooks, you can also replace (2) Flat Washers and (2) Lock Nuts with the included Double Nut Plate if desired. Do not fully tighten hardware at this time.
8. Repeat **Steps 5—7** to install the passenger side Frame Bracket and Top Support Bracket.
9. **Optional Winch Tray and Winch installation (winch sold separately):**
 - a. Select the Winch Tray. With assistance, slide the Winch Tray between the Frame Brackets. Attach the Winch Tray to the Frame Brackets with (6) 12mm x 50mm Hex Bolts, (12) 12mm Flat Washers and (6) 12mm Nylon Lock Nuts, **(Figures 12 & 13)**. Snug but do not fully tighten all hardware.
IMPORTANT: LED bar style light cannot be installed with Winch Tray. If installation of LED bar style light is desired, do not install the Winch Tray and skip to Step 11. Ecoboost air intake shroud may require cutting to clear Winch Tray.
 - b. If installing winch, follow manufacturer's instructions to attach the winch to the Winch Tray. Winch must be installed before Bumper is placed in position against Brackets. Attach winch cable guide, (not included), to Bumper assembly. Follow manufacturer's instructions to properly wire the winch to the electrical system.
10. **Optional Center LED light installation (sold separately). NOTE:** Light must be installed before Bumper Assembly is attached to the Frame Brackets. **IMPORTANT: Winch Tray cannot be installed with LED bar style light assembly. LED bar style light installation not recommended on models equipped with Ecoboost engine option.**
 - a. Select the L/R "L" Brackets, **(Figure 14)**. **NOTE:** "L" Brackets are offset for universal fitment for most LED bar style lights. Attach the LED light assembly to the "L" Brackets with the included (2) 8mm x 16mm Hex Bolts, (2) 8mm Lock Washers and (2) 8mm Flat Washers. Do not fully tighten hardware at this time. **NOTE:** "L" Brackets may require modification for hardware larger than 8mm or use brackets supplied with light if possible.
 - b. Attach the light and Brackets to the top of the (2) tabs on the back of the Bumper with the included 8mm x 25mm Hex Bolts, (4) 8mm Flat Washers, (2) 8mm Lock Washers and (2) 8mm Hex Nuts, **(Figure 14)**. Adjust light position and tighten hardware.
 - c. Follow light manufacturer's instructions to wire the light once Bumper has been fully installed.
11. With assistance, position the Bumper Assembly up to and over the Frame Brackets. Temporarily support the weight of the Bumper. **WARNING:** To avoid possible injury or damage to the vehicle, do not proceed until the bumper is fully and safely supported.
12. Line up the (3) holes in the driver side Frame Bracket with the (3) holes in the inner mounting plate on the back of the Bumper. Attach the Bumper to the Bracket with the included (3) 12mm x 50mm Hex Bolts, (6) 12mm Flat Washers and (3) 12mm Nylon Lock Nuts, **(Figures 15 & 16)**. Snug but do not tighten hardware at this time. Repeat this **Step** to attach the passenger side of the Bumper to the Frame Bracket.

**ELEVATION BULL NOSE FRONT BUMPER
2009-14 FORD F150**

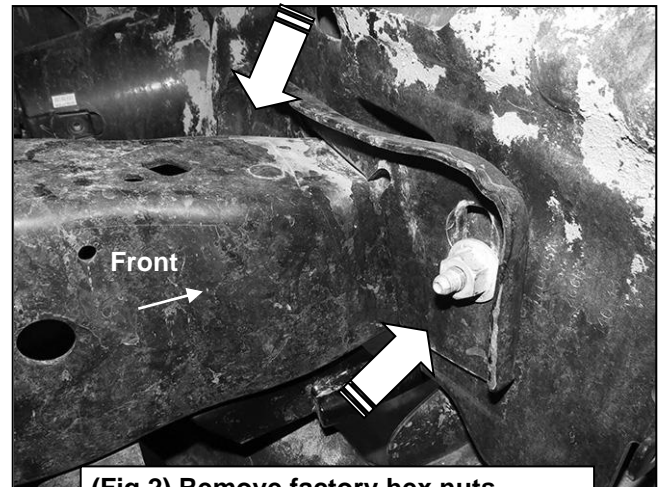
13. Level and adjust the bumper and fully tighten all 12mm hardware to 65-70ft-lbs. Access hardware at the top of the Mounting Bracket through the removable access cover on the top of the Bumper. **NOTE:** If additional adjustment is required, loosen Frame Bracket Hardware and adjust Bracket as necessary.
14. **Models with fog lights:**
 - a. Remove both fog light assemblies from the back of the original bumper, **(Figure 16)**.
 - b. Line up the driver side fog light assembly with the (3) mounting tabs welded onto the back of the bumper. Attach the fog light assembly to the tabs with the included (3) 6mm x 25mm Hex Bolts, (6) 6mm Flat Washers and (3) 6mm Nylon Lock Nuts, **(Figure 17)**. Mounting tabs may move during shipping. Use hand tools to carefully adjust mounting tabs to line up flat with plastic fog light housing. **IMPORTANT:** Do not overtighten 6mm hardware attaching fog light to Bumper or plastic housing may be damaged.
 - c. Repeat to install the passenger side fog light assembly.
 - d. Reattach the factory wiring harness to both lights.
15. Use the included (2) push-in plastic nuts to attach the front license plate, (if required), to the (2) holes in the front bumper, **(Figure 18)**.
16. Do periodic inspections to the installation to make sure that all hardware is secure and tight.

To protect your investment, wax this product after installing. Regular waxing is recommended to add a protective layer over the finish. Do not use any type of polish or wax that may contain abrasives that could damage the finish. Mild soap may be used to clean the Front Bumper assembly.

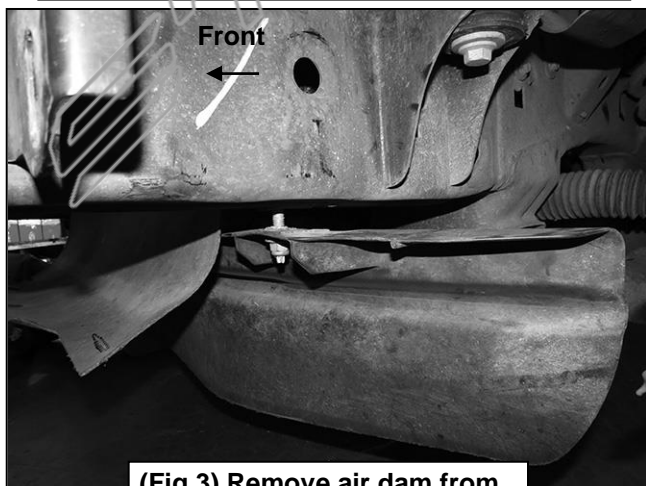
Driver Side Installation Pictured



(Fig 1) Remove screws attaching hood latch to bracket and bracket to bumper (arrows)



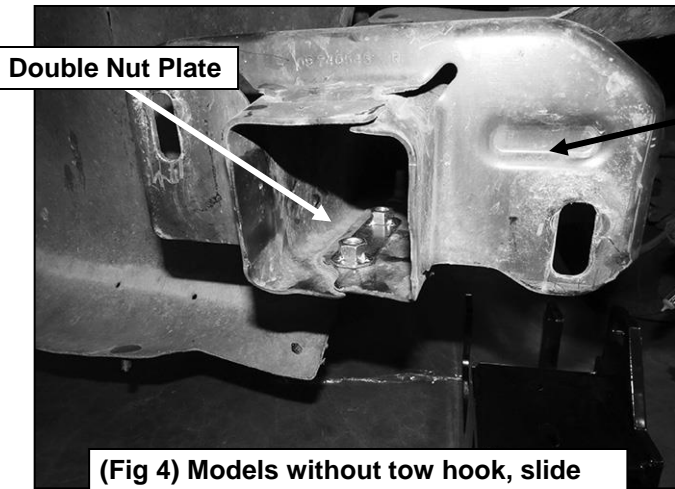
(Fig 2) Remove factory hex nuts (arrows) from back of bumper bracket



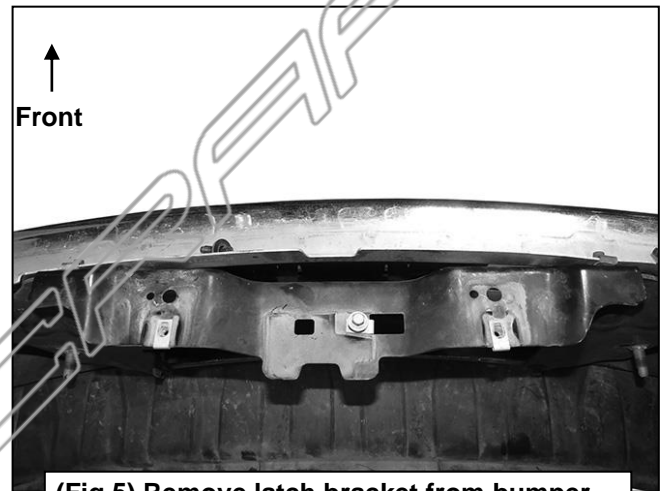
(Fig 3) Remove air dam from bottom of frame (if equipped)

WARNING! Do not remove bumper bolts unless the bumper is properly supported on blocks or stands or the bumper may fall.

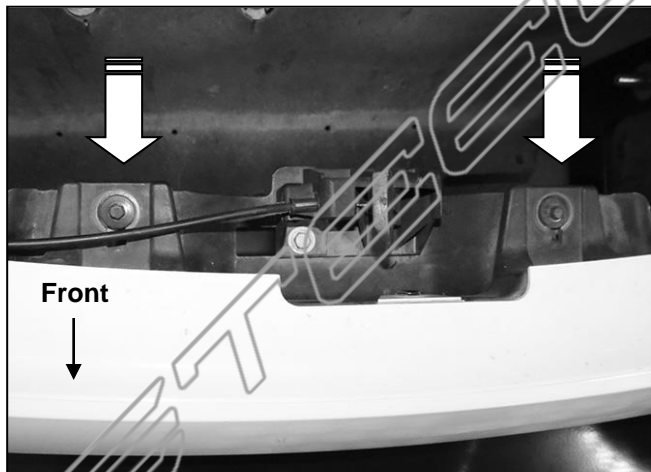
Driver Side Installation Pictured



(Fig 4) Models without tow hook, slide Double Nut Plate into open end of frame. Models with tow hook, remove tow hook from bottom of frame and leave factory nut plate in place in frame

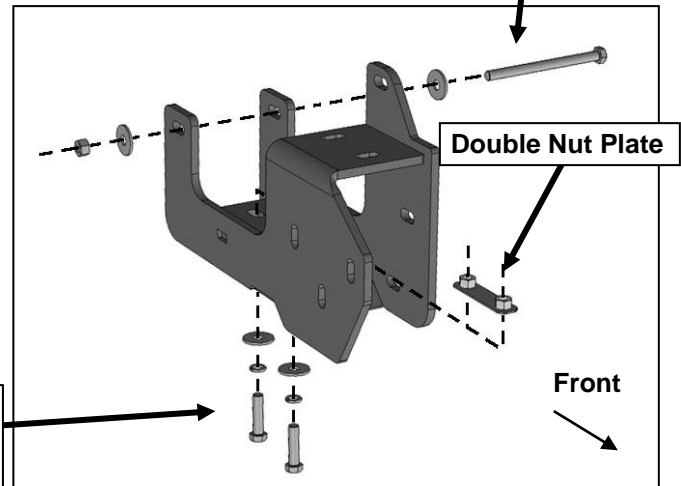


(Fig 5) Remove latch bracket from bumper



(Fig 6) Attach latch bracket to tabs on plastic fascia

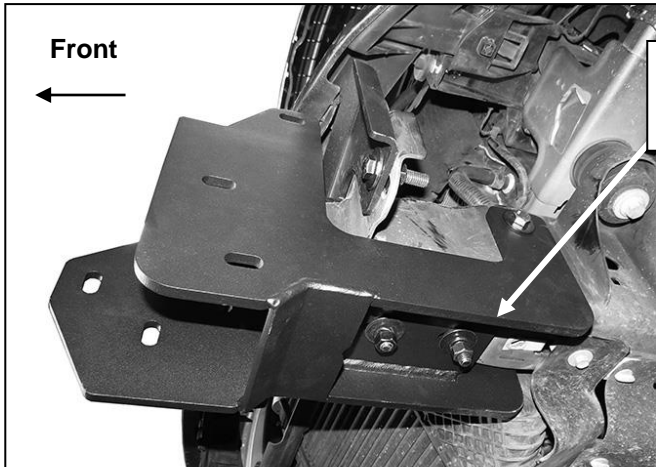
- 12mm x 160mm Long Hex Bolt
- (2) 12mm Flat Washers
- 12mm Nylon Lock Nut



- (2) 12mm x 50mm Hex Bolts
- (2) 12mm Lock Washers
- (2) 12mm Flat Washers

(Fig 7) Attach Driver/left Frame Bracket to Double Nut Plate (Fig 6)

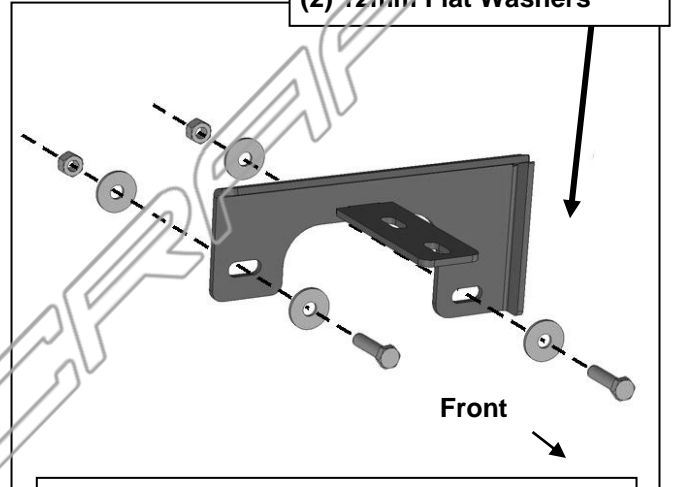
Driver Side Installation Pictured



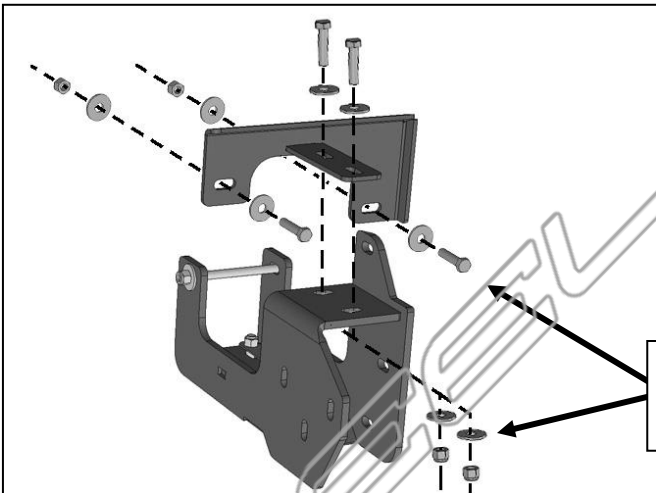
(Fig 8) Driver/left Frame Bracket pictured from below

- (2) 12mm x 50mm Hex Bolts
- (2) 12mm Lock Washers
- (2) 12mm Flat Washers

- (2) 12mm x 50mm Hex Bolts
- (2) 12mm Lock Washers
- (2) 12mm Flat Washers



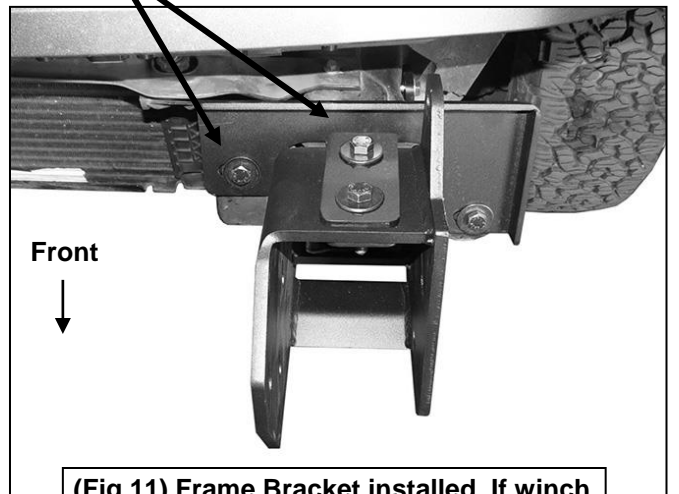
(Fig 9) Attach driver/left Top Support Bracket to bumper mounting flange on frame



(Fig 10) Attach driver/left Top Support Bracket (Fig 9) to top of Frame Bracket

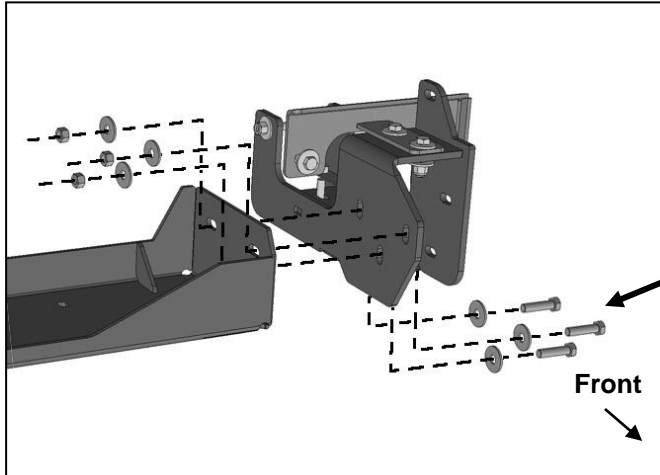
- (2) 12mm x 50mm Hex Bolts
- (2) 12mm Lock Washers
- (2) 12mm Flat Washers

WARNING! Do not crawl under bumper unless the bumper is properly supported on blocks or stands or the bumper may fall.



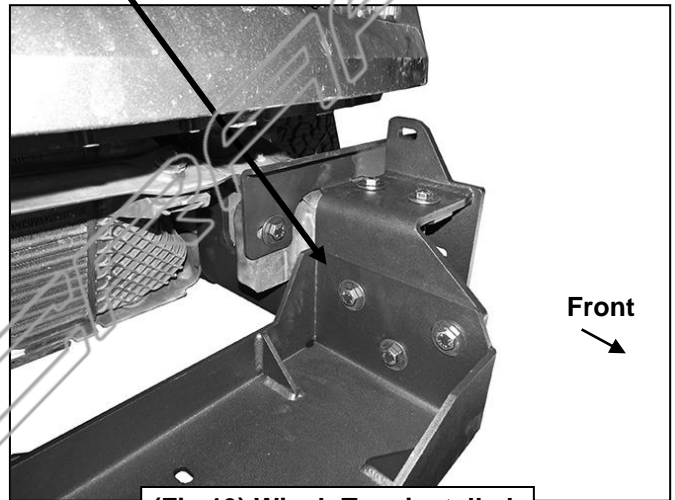
(Fig 11) Frame Bracket installed. If winch will not be installed, skip Figures 12 & 13

Driver Side Installation Pictured



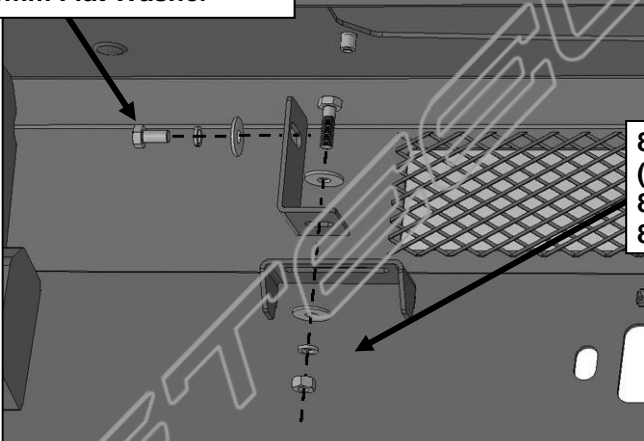
IMPORTANT: Air intake shroud on Ecoboost equipped models may require cutting to clear the Winch Tray.

- (3) 12mm x 50mm Hex Bolts
- (6) 12mm Flat Washers
- (3) 12mm Nylon Lock Nuts



(Fig 12) Attach Winch Tray to inside of Frame Brackets

- 8mm x 16mm Hex Bolt
- 8mm Lock Washer
- 8mm Flat Washer

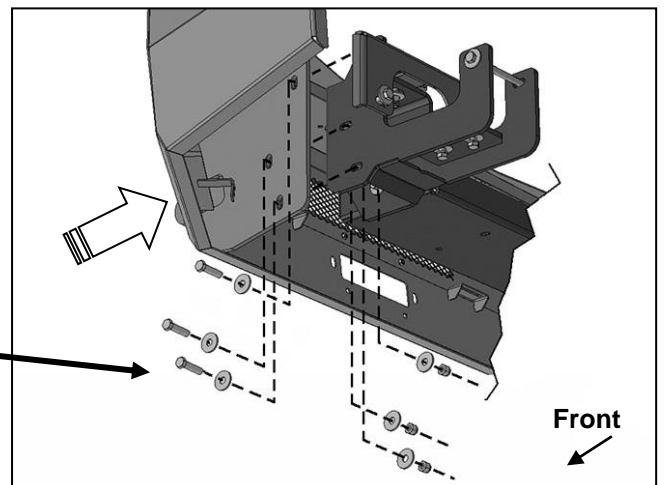


- 8mm x 25mm Hex Bolt
- (2) 8mm Flat Washers
- 8mm Lock Washer
- 8mm Hex Nut

(Fig 14) Universal LED Brackets (light not included)

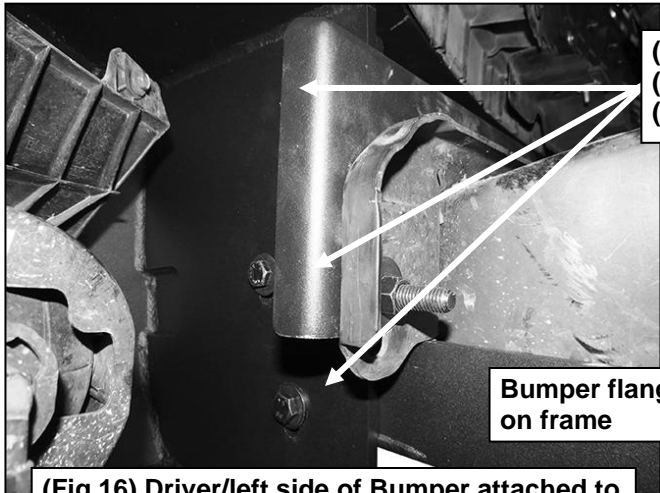
- (3) 12mm x 45mm Hex Bolts
- (6) 12mm Flat Washers
- (3) 12mm Nylon Lock Nuts

WARNING! Do not crawl under bumper unless the bumper is properly supported on blocks or stands or the bumper may fall.



(Fig 15) Attach Bumper to outside of Frame Bracket

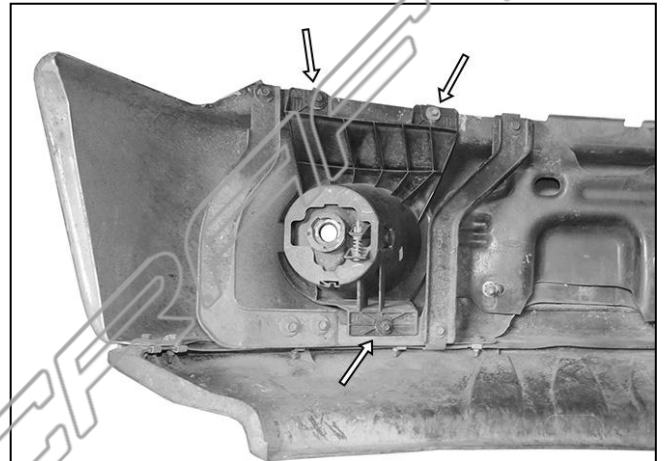
Driver Side Installation Pictured



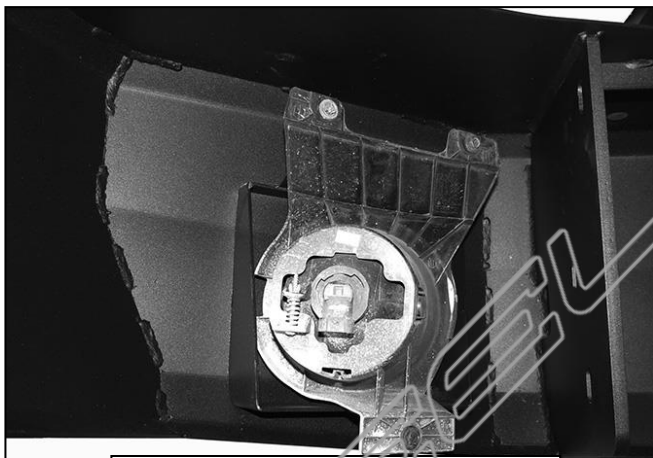
- (3) 12mm x 45mm Hex Bolts
- (6) 12mm Flat Washers
- (3) 12mm Nylon Lock Nuts

Bumper flange on frame

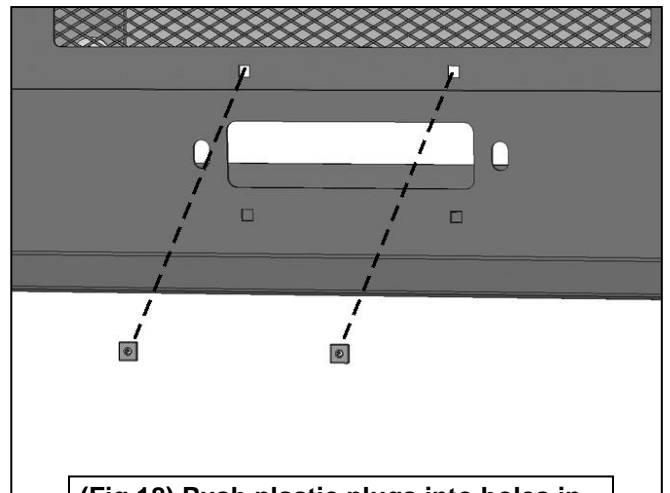
(Fig 16) Driver/left side of Bumper attached to Frame Bracket (pictured from behind bumper)



(Fig 17) Remove fog light assembly if equipped



(Fig 17) Attach fog light assembly to tabs on back of Bumper



(Fig 18) Push plastic plugs into holes in Bumper for license plate if required.



Complete Installation

LED bar light pictured installed behind Bumper on non-ecoboost model. LED light installation not recommended on ecoboost models