



SKYJACKER
SUSPENSIONS
SKYJACKER.COM

Jeep Gladiator JT
5.5" - 6.5" Suspension Lift
Installation Instructions

Required Tools List:

- **SAE Hex Key & SAE Sockets \ Wrenches**
 (7/32" Hex Key Sockets & 1/2", 9/16", 5/8", 13/16", 7/8", 1-1/8" & 1-13/16")
- **Metric Hex Key & Metric Sockets \ Wrenches**
 (6mm Hex Key Socket & 8mm, 10mm, 13mm, 15mm, 18mm, 19mm, 21mm, 22mm & 24mm)
- **Brakeline \ Flare Nut Wrenches**
 (12mm, 15mm, 16mm & 5/8")
- **Plastic Fastener Removal Tool**
- **Standard Flat Screwdriver**
- **Wheel Chock**
- **Floor Jack**
- **Pliers**
- **Power Drill**
- **Center Punch**
- **Paint Marker**
- **Safety Glasses**
- **Torque Wrench**
- **Jack Stands**
- **Pipe Wrench**
- **Diagonal Cutting Pliers**
- **Drill Bit (7/16")**
- **Measuring Tape**
- **Rubber Mallet**
- **Brake Bleeding Tool**
- **DOT Brake Fluid**



Before beginning installation, read these instructions & enclosed driver's WARNING NOTICE thoroughly & completely. Also affix WARNING decal in passenger compartment in clear view of all occupants. Please refer to Parts List to insure that all parts & hardware are received prior to disassembly of vehicle. If any parts are found to be missing, contact SKYJACKER® Customer Service at 318-388-0816 to obtain needed items. If you have any questions or reservations about installing this product, contact SKYJACKER® Technical Assistance at 318-388-0816.

Please Record Important Measurement Information Below for Reference.

It Is Very Helpful on Determining an Accurate Achieved Lift Height Measurement.

Make sure you park vehicle on a level concrete or asphalt surface. Many times a vehicle is not level (side-to-side) from factory, but is usually not noticed until a lift kit has been installed which makes difference more visible. Using a measuring tape, measure front & rear (both sides) from ground up to center of fender opening above axle.

Driver Side Front: _____ / _____
 BEFORE / AFTER

Passenger Side Front: _____ / _____
 BEFORE / AFTER

Driver Side Rear: _____ / _____
 BEFORE / AFTER

Passenger Side Rear: _____ / _____
 BEFORE / AFTER

Important Notes:

- This Suspension Lift is NOT Designed to Fit Mojave Models.
- After Installation, a Qualified Alignment Facility Is Required to Align Vehicle to OEM Specifications.
- If Larger Tires (10% More Than OEM Diameter) Are Installed, Speedometer Recalibration Will Be Necessary. Contact Your Local JEEP Dealer or an Authorized Skyjacker® Dealer for Details.
- Drag Link Must Be Adjusted to Center Steering Wheel Before Vehicle Is Driven. Failure to Do So Will Cause Computer Errors, Odd Handling Characteristics, & Poor Performance.
- Aftermarket Double Cardan Front Driveshaft With Transfer Case Output Yoke Required.

Component Box Breakdown:

Part # G55FR

| Item # | Description | Qty |
|-----------|-----------------------------|-----|
| G45FS-DR | DUAL RATE COIL, FRONT | 2 |
| G225RS-DR | DUAL RATE COIL, REAR 22.5 | 1 |
| G230RS-DR | DUAL RATE COIL, REAR 23.0 | 1 |

Part # G55FRD

| Item # | Description | Qty |
|------------|-----------------------------|-----|
| G45HDFS-DR | HD DUAL RATE COIL, FRONT | 2 |
| G225RS-DR | DUAL RATE COIL, REAR 22.5 | 1 |
| G230RS-DR | DUAL RATE COIL, REAR 23.0 | 1 |

Part # G565XLT

| Item # | Description | Qty |
|------------|------------------------------|-----|
| JLL24F-SX | LOWER FLEX LINKS, FRT PAIR | 1 |
| GULR24-SX | UPPER FLEX LINKS, RR PAIR | 1 |
| JLFTBA18-B | TRACK BAR, FRONT | 1 |
| 34RFTJN | 3/4 RIGHT HAND JAM NUT | 1 |
| HD34X34DTB | HD 3/4 ROD END / TRACK BAR | 1 |
| H-BOX G552 | HWDR BOX: G552/602/652 KITS | 1 |

Part # G65FR

| Item # | Description | Qty |
|------------|-----------------------------|-----|
| G45HDFS-DR | HD DUAL RATE COIL, FRONT | 2 |
| G235RS-DR | DUAL RATE COIL, REAR 23.5 | 1 |
| G240RS-DR | DUAL RATE COIL, REAR 24.0 | 1 |

Part # GR60FR

| Item # | Description | Qty |
|------------|-----------------------------|-----|
| G45HDFS-DR | HD DUAL RATE COIL, FRONT | 2 |
| G235RS-DR | DUAL RATE COIL, REAR 23.5 | 1 |
| G240RS-DR | DUAL RATE COIL, REAR 24.0 | 1 |

Part # G65B

| Item # | Description | Qty |
|---------------|----------------------------|-----|
| B8389 (FRONT) | BLACK MAX SHOCK W/BLK BOOT | 2 |
| B8398 (REAR) | BLACK MAX SHOCK W/BLK BOOT | 2 |

Part # G65M

| Item # | Description | Qty |
|---------------|--------------------|-----|
| M9389 (FRONT) | M95 MONOTUBE SHOCK | 2 |
| M9398 (REAR) | M95 MONOTUBE SHOCK | 2 |

Part # G65X

| Item # | Description | Qty |
|---------------|--------------------------|-----|
| A2389 (FRONT) | ADX 2.0 REMOTE RESERVOIR | 2 |
| A2398 (REAR) | ADX 2.0 REMOTE RESERVOIR | 2 |

Hardware Box Breakdown:

Part # H-BOX G552

| Item # | Description | Qty |
|-------------|-----------------------------|-----|
| JTG30RBS-S | BUMP STOP BRACKET, RR 3.0 | 2 |
| JTGRTB-B | TRACK BAR BRACKET, REAR | 1 |
| SBE4058-L | SWAY BAR END LINK, FRT | 2 |
| SBE507-L | SWAY BAR END LINK, RR | 2 |
| RBL55 | BRAKE LINES, REAR PAIR | 1 |
| HB-ABSS2535 | HDWR BAG: BUMP STOP, FRT | 1 |
| HB-JLFTBB | HDWR BAG: TRACK BAR BRKT, F | 1 |
| HB-JTGRBS | HDWR BAG: BUMP STOP, RR | 1 |
| HB-JTGRTB | HDWR BAG: TRACK BAR BRKT, R | 1 |
| HB-JTGSBER | HDWR BAG: SB END LINK, RR | 1 |
| HB-SBENB24 | HDWR BAG: SB END LINK, FRT | 1 |

Part # JLL24F-SX

| Item # | Description | Qty |
|--------------|-----------------------------|-----|
| JL24LLF-SX-L | LOWER SINGLE FLEX LINK, FRT | 2 |
| RE114-640R | 1-1/4 ROD END, RIGHT HAND | 2 |
| 114RFTJN | 1-1/4 RIGHT HAND JAM NUT | 2 |

Part # GULR24-SX

| Item # | Description | Qty |
|-------------|----------------------------|-----|
| GULR24-SX-L | UPPER SINGLE FLEX LINK, RR | 2 |
| RE114-640R | 1-1/4 ROD END, RIGHT HAND | 2 |
| 114RFTJN | 1-1/4 RIGHT HAND JAM NUT | 2 |

Part # RBL55

| Item # | Description | Qty |
|--------|-------------------------|-----|
| RBL55S | BRAKE LINE, RR | 2 |
| 3CCW | 3/8 COPPER CRUSH WASHER | 4 |
| HC1 | BRAKE LINE CLIP | 2 |
| BTIE-K | BLACK PLASTIC TIE | 10 |

Hardware Bag Breakdown:

Part # HB-ABSS2535

| Item # | Description | Qty |
|-----------|------------------------------|-----|
| ABSS2535 | BUMP STOP SPACER, FRT | 2 |
| 38X412BHB | 3/8 X 4-1/2 BUTTON HEAD BOLT | 2 |
| 38SAEW | 3/8 SAE WASHER | 2 |
| 38CTN | 3/8 COARSE THRD N/I LOCK NUT | 2 |

Part # HB-JLFTBB

| Item # | Description | Qty |
|--------|----------------------------|-----|
| JLFTBB | ROD END BUSHING / 0.563 ID | 2 |

Part # HB-JTGRBS

| Item # | Description | Qty |
|----------|-------------------------------|-----|
| 516X1FTB | 5/16 X 1 FINE THREAD BOLT | 4 |
| 516SAEW | 5/16 SAE WASHER | 8 |
| 516FTN | 5/16 FINE THREAD N/I LOCK NUT | 4 |

Part # HB-JTGRTB

| Item # | Description | Qty |
|------------|-------------------------------|-----|
| TBS1656 | CRUSH SLEEVE 1.656 LONG | 1 |
| 716X114FTB | 7/16 X 1-1/4 FINE THREAD BOLT | 2 |
| 716SAEW | 7/16 SAE WASHER | 4 |
| 716FTN | 7/16 FINE THREAD N/I LOCK NUT | 2 |
| 916X312FTB | 9/16 X 3-1/2 FINE THREAD BOLT | 1 |
| 916SAEW | 9/16 SAE WASHER | 2 |
| 916FTN | 9/16 FINE THREAD N/I LOCK NUT | 1 |

Hardware Bag Breakdown:

Part # HB-JTGSBER

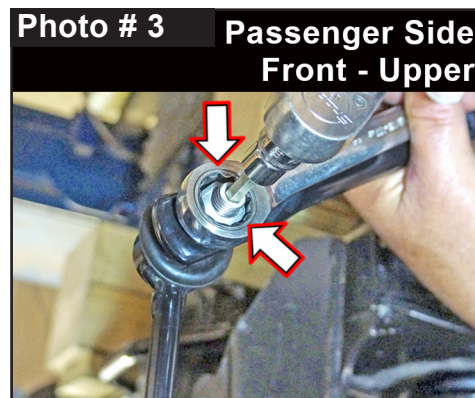
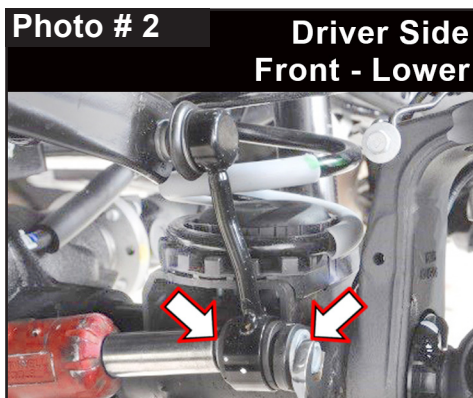
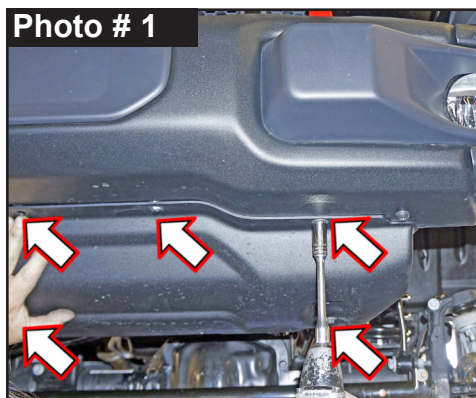
| Item # | Description | Qty |
|-----------|----------------------------|-----|
| HG58125-K | BLACK HOURGLASS BUSHING | 4 |
| 403712 | CRUSH SLEEVE 1.25 LONG | 4 |
| 12X65MMB | 12MM X 65 METRIC BOLT | 2 |
| 716USSW | 7/16 USS FLAT WASHER | 6 |
| 12MMN | 12MM NYLON INSERT LOCK NUT | 2 |

Part # HB-SBENB24

| Item # | Description | Qty |
|-----------|----------------------------|-----|
| 1412BSG-S | SWAY BAR REDUCER BUSHING | 2 |
| 141509 | ES25 SLEEVE, 1.50 LONG | 4 |
| 12X70MMB | 12MM X 70MM METRIC BOLT | 2 |
| 716USSW | 7/16 USS FLAT WASHER | 4 |
| 12MMN | 12MM NYLON INSERT LOCK NUT | 2 |

Front Installation: **Note:** Save all factory components & hardware for reuse, unless noted.

1. With vehicle on flat level ground, set emergency brake & chock rear tires \ wheels.
2. Raise front of vehicle, support frame rails using jack stands at indicated lift points in OEM service manual.
3. Remove front tires \ wheels using a 22mm socket.
4. Remove OEM front skid plate using a 13mm socket \ wrench. (Photo # 1)
5. Remove OEM front sway bar end link lower mount from OEM axle mount using a 18mm socket \ wrench. (Photo # 2)
6. Remove OEM front sway bar end link upper mount from OEM sway bar using a 6mm hex key socket \ wrench & 18mm socket \ wrench. (Photo # 3)



7. Disconnect OEM front track bar from frame mount using a 21mm socket \ wrench. (Photo # 4)
8. Disconnect OEM drag link from OEM pitman arm using a 21mm socket \ wrench. (Photo # 5)
9. Disconnect OEM front shock from upper shock tower mount & lower axle mount using a 18mm socket \ wrench. (Photo # 6)

Photo # 4

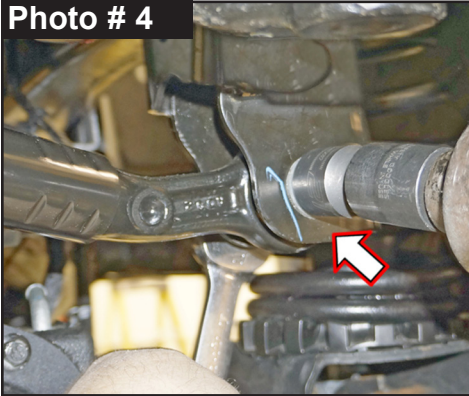


Photo # 5

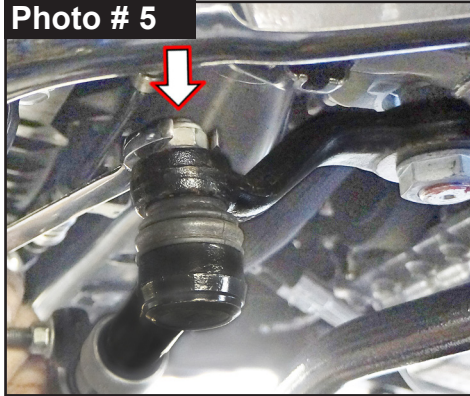
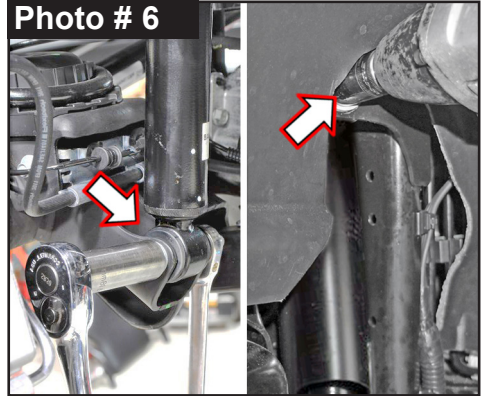


Photo # 6



10. Disconnect OEM front brake line from OEM front lower control arm brake line bracket. Carefully pry OEM front brake line from bracket using a flat screwdriver or similar tool. (Photo # 7)

Note: Be very careful not to damage OEM front brake line. **CAUTION:** If brake line is damaged, Line MUST be Replaced.

11. Remove OEM front brake line bracket from OEM front lower control arm using a 15mm socket \ wrench. (Photo # 8)

12. Mark location of OEM front driveshaft & front differential input yoke. Disconnect OEM front driveshaft using a 15mm socket \ wrench. (Photo # 9)

Tech Note: Secure driveshaft safely up & out of way with a bungee or other method.

Photo # 7

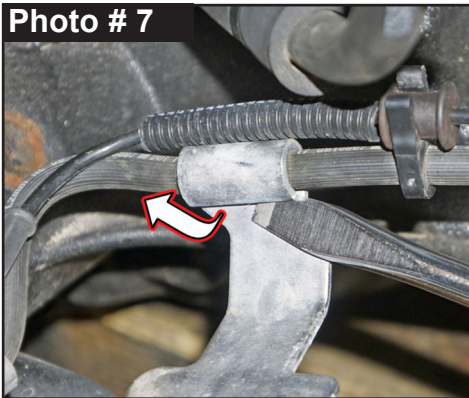


Photo # 8

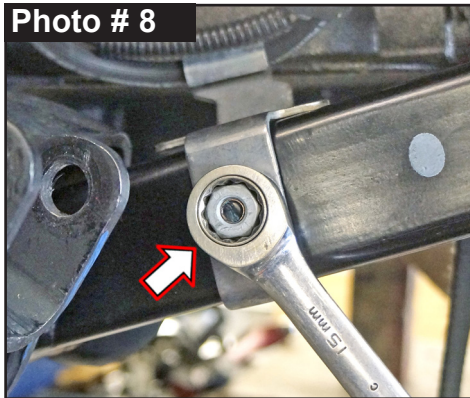
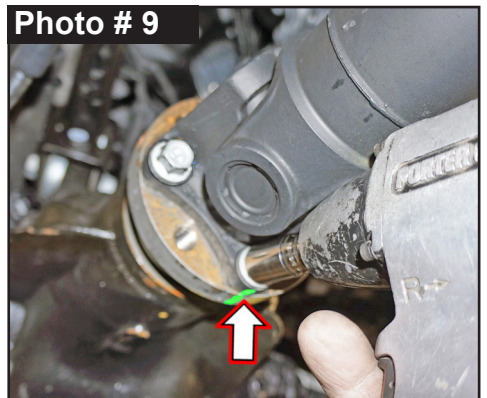


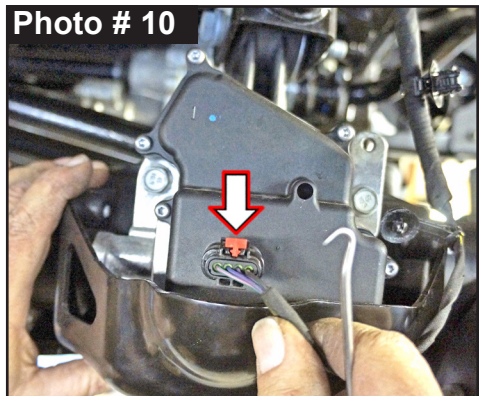
Photo # 9



13. OEM Center Axle Disconnect (CAD) 4WD Actuator, must be disconnected. Disconnect wiring harness from Passenger Side at OEM front upper control arm axle mount. (Photo # 10)

Tech Note: Red safety lock clip must be slid rearward to unlock. Press & hold rearward tang down, grab connector & pull away while from plug-in.

Photo # 10

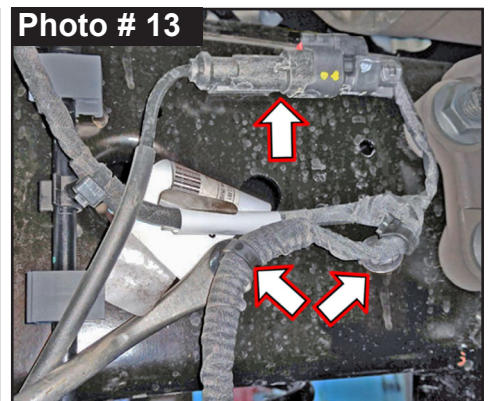
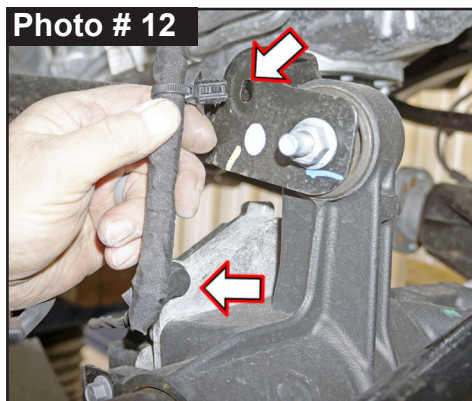
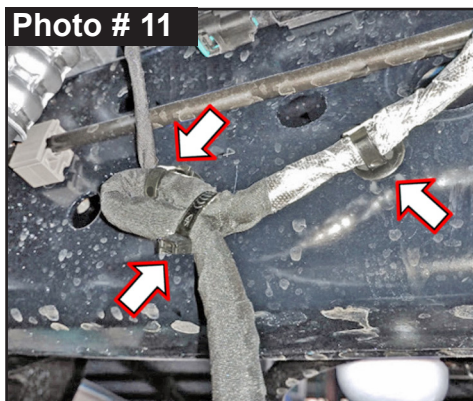


14. OEM Center Axle Disconnect (CAD) 4WD Actuator, on passenger side located at inner frame rail above axle, remove cable tie from wiring harness. Unclip wiring harness clips from frame using a plastic fastener removal tool. (Photo # 11)

OEM Center Axle Disconnect (CAD) 4WD Actuator, on passenger side unclip wiring clips from front axle using a plastic fastener removal tool. (Photo # 12)

15. **Rubicon Models:** Disconnect OEM front locker. On driver side located at 'inner' frame rail above axle, unplug OEM harness plug. (Photo # 13) **Tech Note:** Red safety lock clip must be slid rearward to unlock. Press & hold rearward tang down, grab connector & pull away while from plug-in.

Unclip wiring harness clips from frame using a plastic fastener removal tool. (Photo # 13)

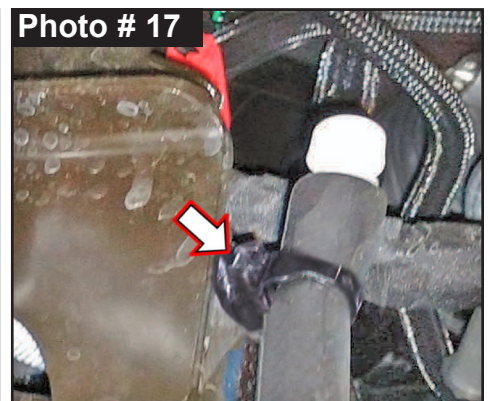
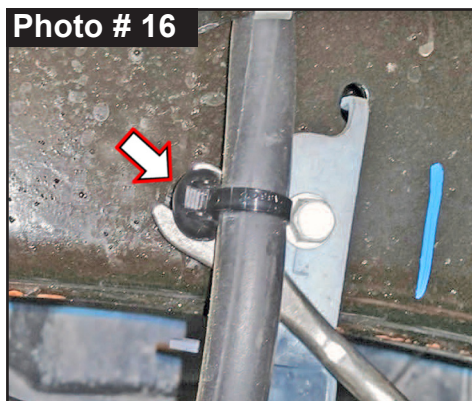
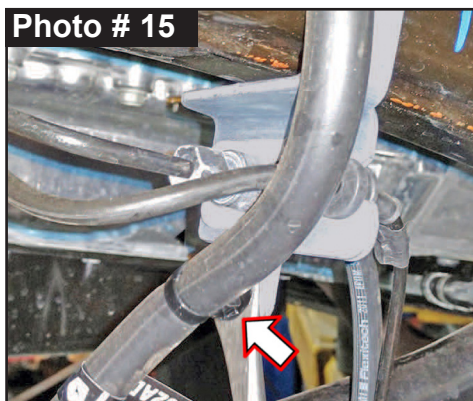
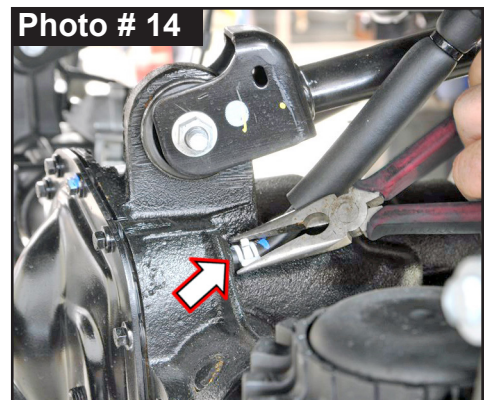


16. Disconnect OEM vent hose \ clip from front differential using pliers. (Photo # 14)

17. Locate OEM brake line bracket attached on driver side frame to rear of shock tower. Unclip axle vent hose clip from brake line bracket using a plastic fastener removal tool. (Photo # 15)

Follow vent tube up & unclip frame attachment using a plastic fastener removal tool. (Photo # 16)

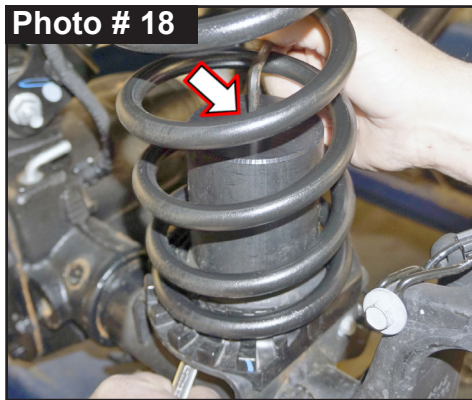
Continue to follow vent tube up & unclip from shock tower (behind OEM inner fender liner) using a plastic fastener removal tool. (Photo # 17)



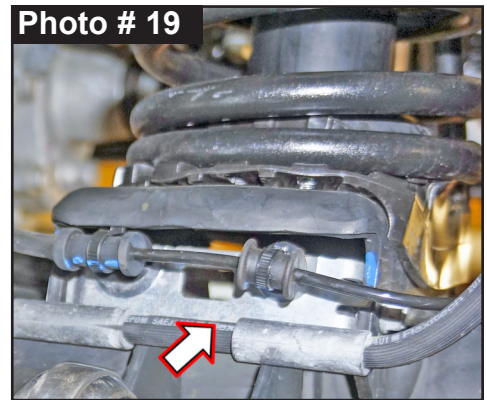
18. While checking for appropriate slack in ABS lines, brake lines, axle vent hose & etc. Lower front axle. Remove OEM front coil springs & rubber isolators.
19. Skyjacker Front Coil Springs Are Not Side Specific. Place Skyjacker # ABSS2535 Front Bump Stop Spacer inside Skyjacker Front Coil Spring.

Install front coil spring with bump stop spacer inside. Insert coil spring into upper tower first.
Note: Make sure OEM coil spring isolator is properly aligned in upper OEM tab mount. Be sure coil is indexed to seat properly, then raise axle enough to hold coil springs in place.

Insert supplied 3/8" x 4-1/2" Button Head Bolt into bump stop spacer. Align bolt into hole of OEM lower spring mount pad. (Photo # 18)



Reach under spring mount pad & above axle tube to install supplied 3/8" SAE Washer & 3/8" Nylon Insert Lock Nut onto bolt. Tighten bump stop spacer into place



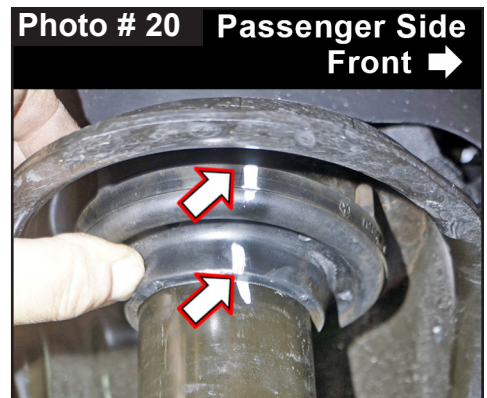
using a 7/32" hex key socket \wrench & 9/16" socket \wrench. Torque 25 ft-lbs.

Tech Note: On passenger side, it may be necessary to remove ABS bracket to install bump stop spacer lock nut. At rear of axle above shock mount, remove ABS mounting bracket using a 10mm socket \wrench. (Photo # 19) Once bump stop spacer is installed, reinstall ABS bracket.

20. Raise front axle to load Skyjacker front coil springs.

Note: There has been occasional reports of passenger side coil spring having an inward bow after installation. If so, OEM upper coil spring isolator can be rotated 180 degrees.

Mark OEM position of passenger side OEM upper coil spring isolator. (Photo # 20) Remove two (2) alignment pins on top of passenger side OEM upper coil spring isolator using diagonal cutting pliers or similar tool.



Rotate passenger side OEM upper coil spring isolator so thicker portion is on inside toward frame.

NOTE: Kit With Black MAX \M95 Monotube: Proceed to Step 21.

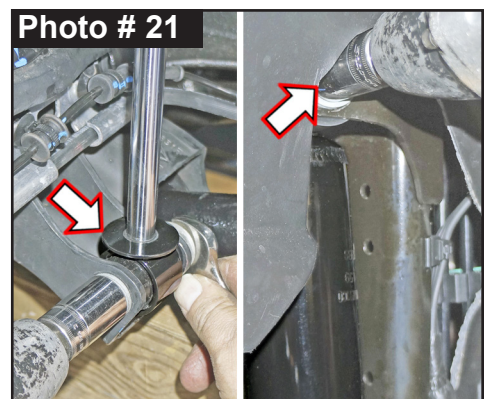
Kit With ADX 2.0 Remote Reservoir: Proceed to Steps 22-23.

21. Install Skyjacker front shock with OEM hardware at upper shock tower mount using a 18mm socket \wrench. Secure, but **Do Not Completely Tighten**. (Photo # 21)

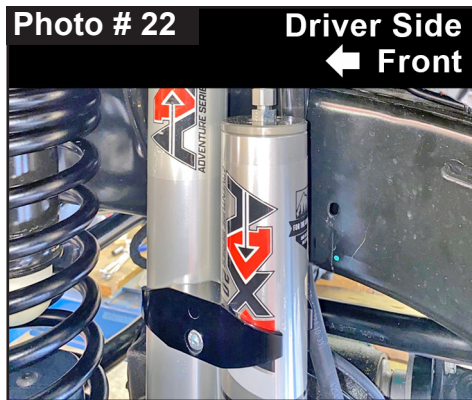
Tech Note: Black MAX & M95 Monotube are to be mounted with cylinder body up for proper installation of pre-installed upper mount bushings.

Note: Upper shock mount has a OEM fixed nut welded onto frame. Be careful not to dislodge nor over tighten this nut.

Connect Skyjacker shock at lower axle mount with OEM hardware using a 18mm socket \wrench. (Photo # 21) Secure, but **Do Not Completely Tighten**. To set bushings properly for ride height, these will be tightened once vehicle is on ground with full vehicle weight on tires \wheels.



22. **Tech Note:** ADX Remote Reservoir are to be mounted with cylinder body up & remote reservoir toward rear for proper clearance (opposite side of coil spring mount). (Photo # 22 & # 23)



Locate Skyjacker ADX front shock. Loosely assemble two (2) supplied reservoir clamps with two (2) supplied

hex head bolts using a hex key socket (one (1) front & one (1) back). Position clamp into place around shock body & reservoir cylinder. Secure, but **Do Not Completely Tighten**.

Install Skyjacker ADX front shock. Connect upper shock mount with OEM hardware at upper shock tower mount using a 18mm socket \ wrench. **Note:** Upper shock mount has a OEM fixed nut welded onto frame. Be careful not to dislodge nor over tighten this nut.

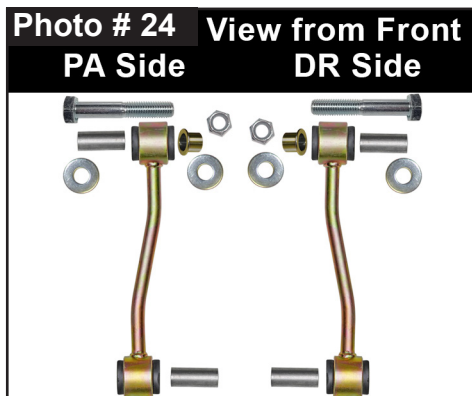
23. Connect lower axle mount with OEM hardware using a 18mm socket \ wrench. Secure, but **Do Not Completely Tighten**.

CAUTION: Make Sure ADX Shock Reservoir \ Reservoir Hose Does Not & Will Not Make Contact with Anything Throughout Full Travel Cycle of Suspension. (Tire \ wheel, frame rail, frame brackets, springs, brake lines, etc.) For proper clearance, it may be necessary to change location or orientation of reservoir on shock body. Use a hex key socket to loosen clamps to position reservoir cylinder as needed.

24. **Note:** Skyjacker Sway Bar End Links Are Not Side Specific. Installation Direction \ Position Is Side Specific. (Photo # 24)

Coat supplied # ES25 1.50 Long Steel Sleeves with a water resistant grease.

Press Sleeves into supplied Sway Bar End Link Eyes.



25. **Note:** Skyjacker # 1412BSG-S Sway Bar Reducer Bushing is supplied for **All 2024+ Models**.

Insert Sway Bar Reducer Bushing into OEM sway bar from outside-to-inside. (Photo # 25)

26. Install Skyjacker Sway Bar End Link Assembly upper eye mount with supplied 12mm x 70mm Bolt with a 7/16" USS Washer from inside-to-outside through sway bar.
Attach with a 7/16" USS Washer & 12mm Nylon Insert Lock Nut using a 19mm socket \ wrench. (Photo # 26) Secure, but **Do Not Completely Tighten**.

27. Install Skyjacker Sway Bar End Link Assembly lower eye mount with OEM hardware using a 18mm socket \ wrench. (Photo # 27) Secure, but **Do Not Completely Tighten**.

Note: On Driver Side, install lower OEM bolt head with large washer from inside-to-outside through outer bushing side of end link. (Photo # 28) Secure, but **Do Not Completely Tighten**.

Photo # 26 Driver Side Front - Upper

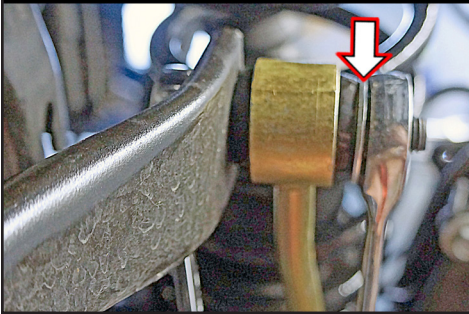


Photo # 27 Passenger Side Front - Lower

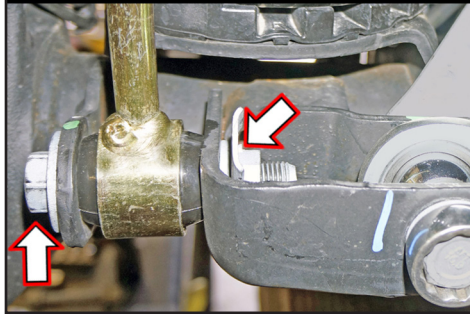
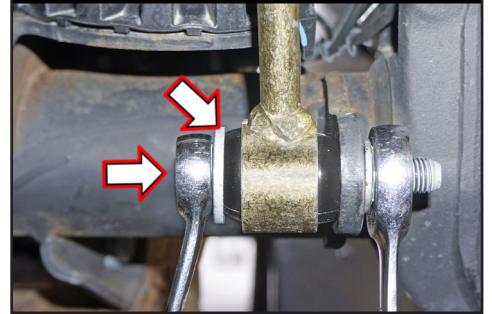


Photo # 28 Driver Side Front - Lower

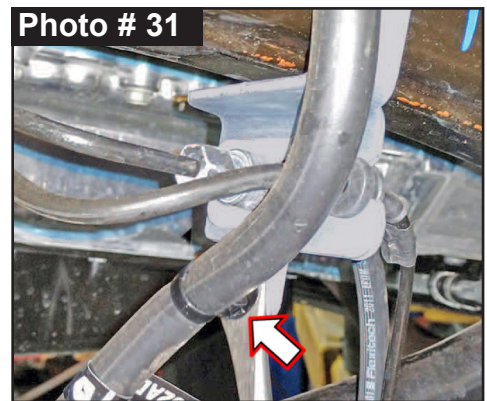
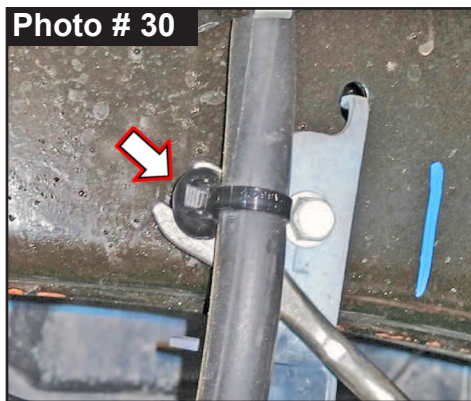
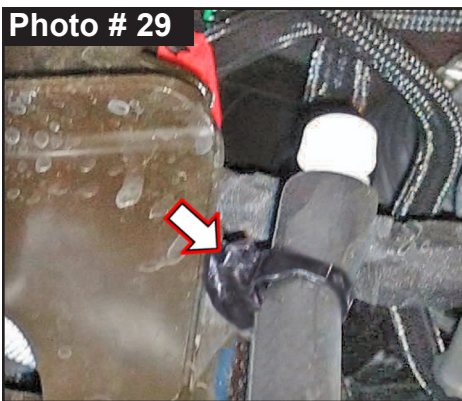


28. Connect OEM axle vent hose at OEM mounts.

Clip at shock tower mount (behind OEM inner fender liner). (Photo # 29)

Clip at frame attachment. (Photo # 30)

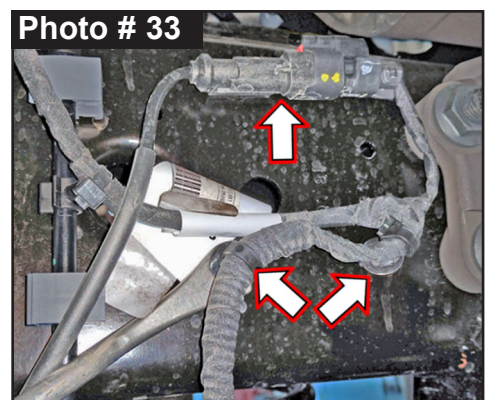
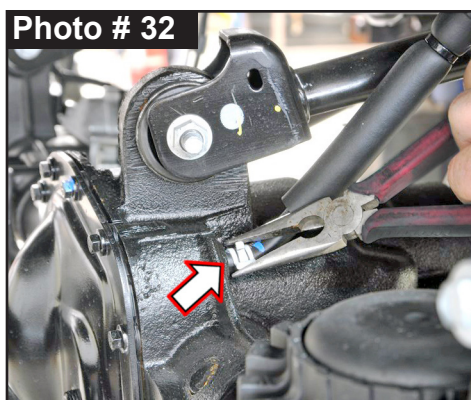
Clip axle vent hose clip to brake line bracket. (Photo # 31)



29. Connect OEM vent hose \ clip to front differential using pliers. (Photo # 32)

30. **Rubicon Models:** Connect OEM front locker on driver side. (Photo # 33) **Tech Note:** Pull out on connector to verify that it is securely plugged in properly.

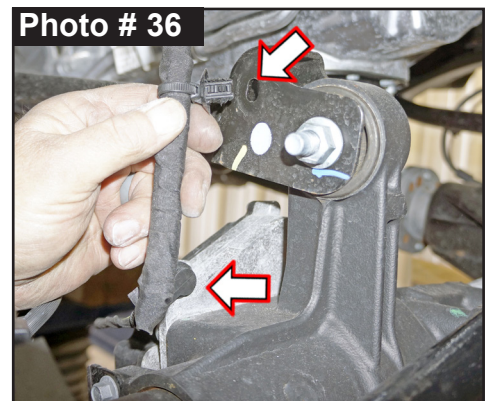
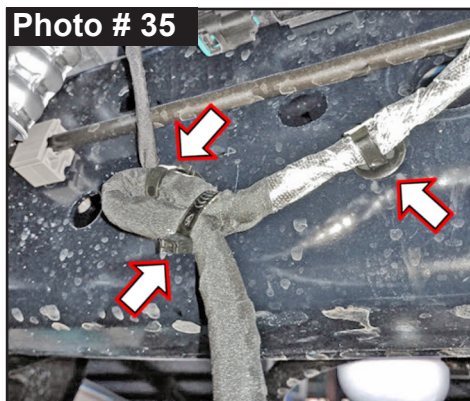
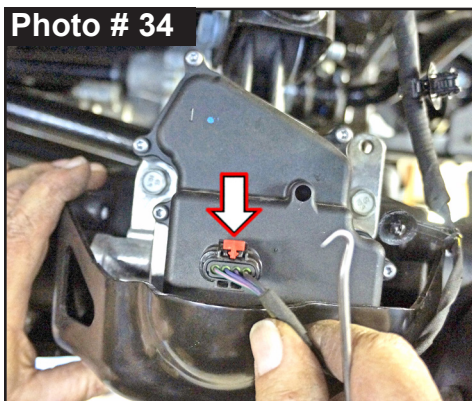
Clip wiring harness clips to frame. (Photo # 33)



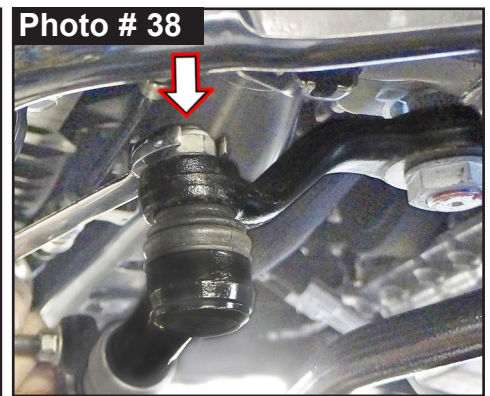
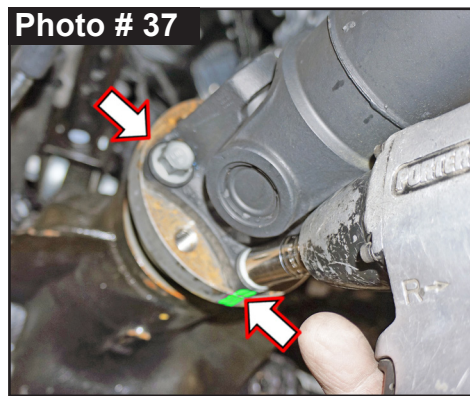
31. Connect OEM Center Axle Disconnect (CAD) 4WD Actuator, on passenger side located at inner frame rail above axle. (Photo # 34) **Tech Note:** Pull out on connector to verify that it is securely plugged in properly.

Attach wiring harness clip to frame. (Photo # 35)

Attach wiring clip to front axle. (Photo # 36)



32. Raise front axle to align marks on OEM front driveshaft \ flange & connect driveshaft with OEM hardware using a 15mm socket \ wrench. (Photo # 37) Torque 89 ft-lbs.



33. Connect OEM drag link to OEM pitman arm with OEM hardware using a 21mm socket \ wrench. (Photo # 38) **Note:** Drag Link Must Be Adjusted to Center Steering Wheel Before Vehicle Is Driven. Failure to Do So Will Cause Computer Errors, Odd Handling Characteristics, & Poor Performance.

34. **Note:** Skyjacker Front Lower Flex Links Are Not Side Specific. Installation Direction \ Position Is Side Specific. Assemble Skyjacker # JL24LLF-SX-L Front Lower Flex Link with # RE114-640R Right Hand 1-1/4" Rod End & # 114RFTJN Jam Nut. (Photo # 39)

Measure length of Skyjacker Flex Link Arm assembly from centerline of rod end to centerline of bushing.

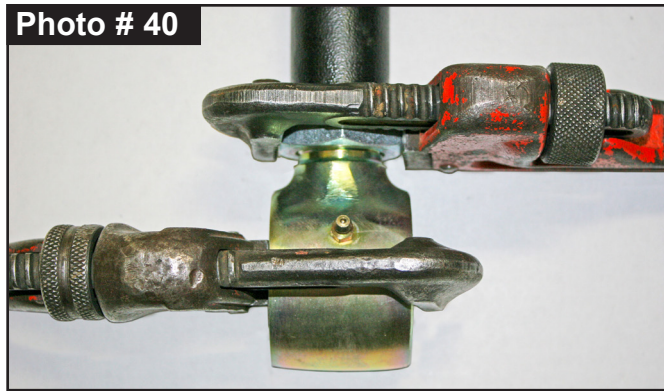
Tech Note: Be sure to keep ends square with each other.

Note: These are pre-alignment measurements only. Final Measurements are to be set by a qualified alignment facility. **Lower Front = 24-1/2"**



35. On rod end, rotate jam nut against steel tubing. Hold rod end in place with a pipe wrench & use another pipe wrench or 1-13/16" wrench on jam nut to completely tighten. (Photo # 40 & # 41)

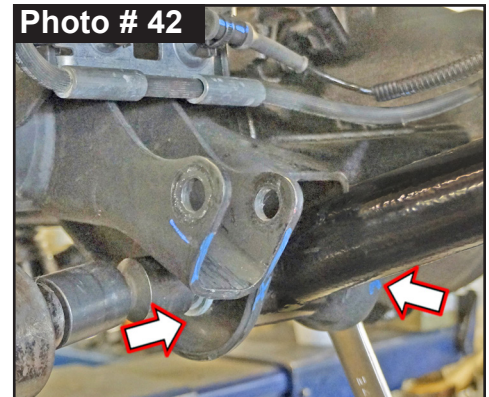
Tech Note: Jam nut must be tightened against steel tubing before installation.



Note: Perform Step 36 on One Side at a Time.

36. One side at a time, remove OEM front lower link. Install Skyjacker # JL24LLF-SX-L Front Lower Flex Link assembly with OEM hardware using a 21mm & a 24mm socket \ wrench. Secure, but **Do Not Completely Tighten**.

Tech Note: Install with rod end attached to OEM frame mount. Offset Bend to Inside of vehicle. (Photo # 42)

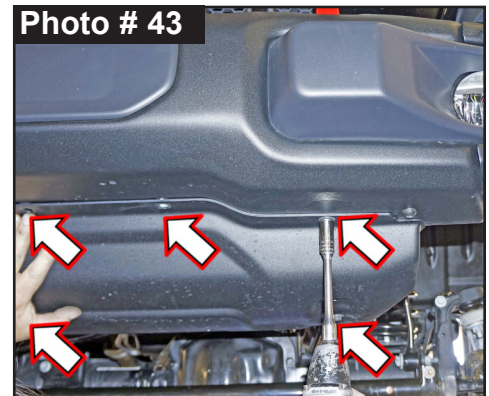


Note: Perform Step 36 on Opposite Side. Proceed to Step 37.

37. Install OEM front skid plate with OEM hardware using a 13mm socket \ wrench. (Photo # 43)

38. Install front tires \ wheels using a 22mm socket. Lower vehicle to ground. Torque lugs to OEM service manual specifications.

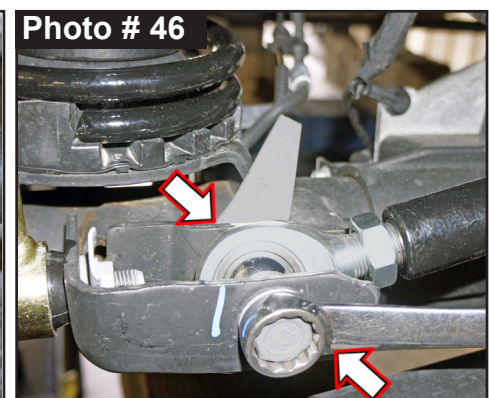
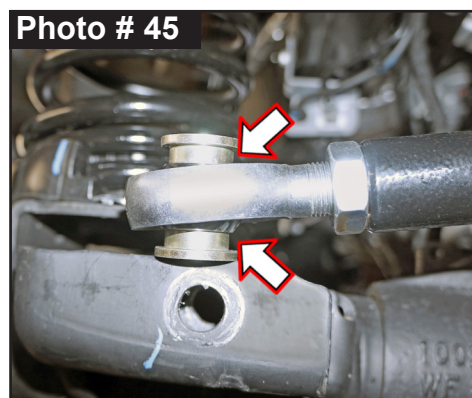
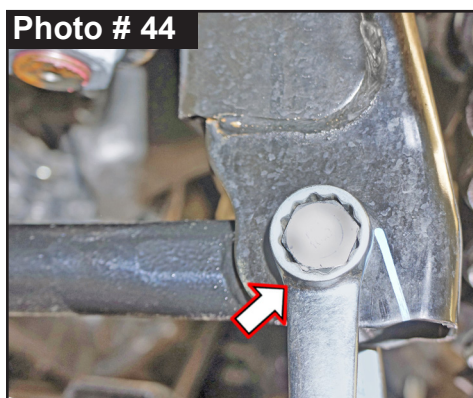
39. Make sure that tires \ wheels are pointed straight ahead. Install fixed end of Skyjacker # JLFTBA18-B Front Adjustable Track Bar to frame with OEM hardware using a 21mm socket \ wrench. (Photo # 44) Secure, but **Do Not Completely Tighten**.



40. Install supplied # JLFTBB Rod End Bushings onto rod end of Skyjacker track bar. (Photo # 45)

Install rod end assembly into front axle mount with OEM hardware using a 21mm socket \ wrench. (Photo # 46) Secure, but **Do Not Completely Tighten**.

Tech Note: It may be necessary to turn steering wheel to align track rod end with mount.



41. **Adjust \Align Track Bar:** Check front of vehicle to make sure body is centered over front tires \wheels. Using a measuring tape, measure from inside of tire to frame on driver side, then measure passenger side.

Compare two measurements; aim is to make both sides equal. **Tech Note:** If driver side measurement is greater than passenger side, track bar needs to be lengthened. If passenger side measurement is greater than driver side, track bar needs to be shortened.

Remove adjustable rod end of track bar, loosen jam nut using a 1-1/8" wrench & turn rod end to adjust in or out. Once body is properly aligned over front tires \wheels, tighten OEM hardware using a 21mm socket \wrench.

Fully tighten all OEM hardware at upper frame mount & axle mount. Fully tighten jam nut of Skyjacker adjustable front track bar using a 1-1/8" wrench.

Rear Installation: Note: Save all factory components & hardware for reuse, unless noted.

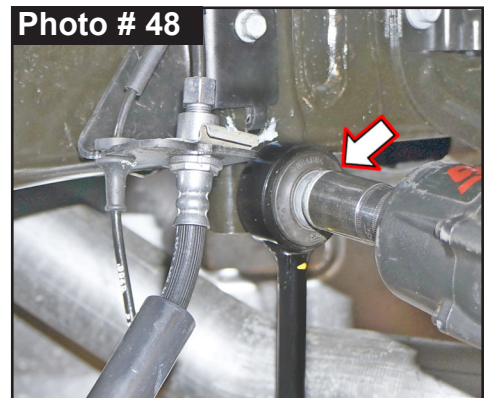
1. Chock front tires \wheels. Raise rear of vehicle & support frame rails using jack stands at indicated lift points in OEM service manual.

2. Remove rear tires \wheels using a 22mm socket.

3. Remove OEM rear sway bar end link. Disconnect lower link at sway bar using a 6mm hex key socket \wrench & 18mm socket \wrench. (Photo # 47)

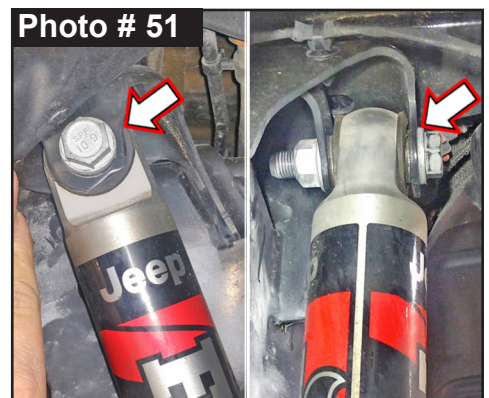
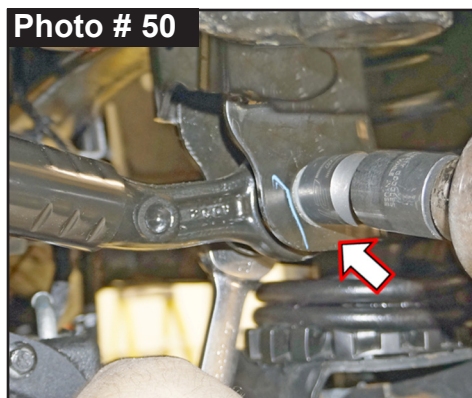
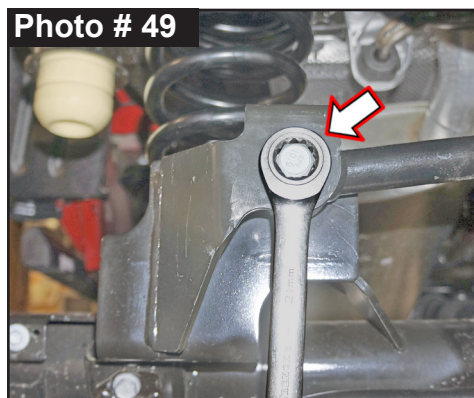


Disconnect upper link at outside frame using a 21mm socket \wrench. (Photo # 48)



4. Disconnect OEM rear track bar from rear axle mount using a 21mm socket \wrench. (Photo # 49) **Tech Note:** It may be necessary to raise \lower axle to take pressure off track bar bolt. Retain OEM hardware.

5. Disconnect OEM rear shock at upper & lower hardware using a 21mm socket \wrench. (Photo # 50 & # 51) Remove OEM rear shocks & retain hardware.

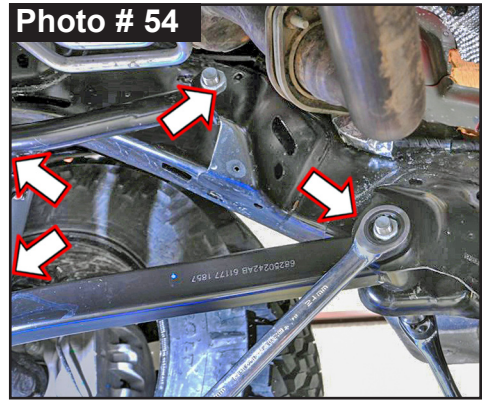
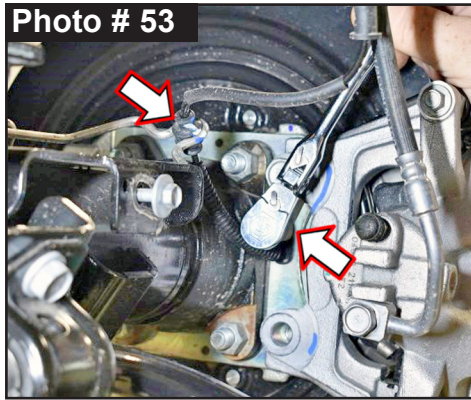
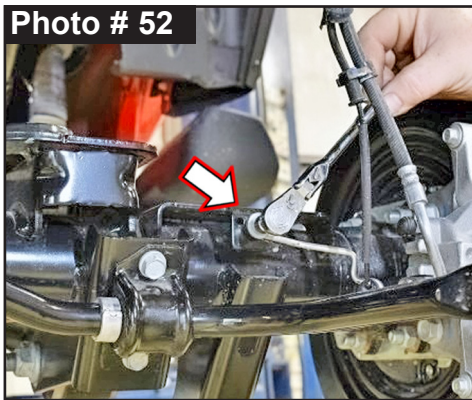


6. **Rubicon Models:** OEM rear locker must be disconnected so wiring connectors are not over-extended. On rear axle, unplug locker wiring harness from side of center differential housing. **Tech Note:** Safety lock clip must be slid rearward to unlock. Press & hold rearward tang down, grab connector & pull away while from plug-in.

Follow OEM locker wiring harness up & unclip harness clamps from emergency brake cable. Continue up OEM locker wiring harness & unclip two (2) wiring harness clips from driver side inner frame rail above axle using a plastic fastener removal tool.

7. Disconnect OEM ABS bracket from axle mount using a 10mm socket \ wrench. (Photo # 52)
Disconnect OEM ABS sensor from brake caliper bracket using a 8mm socket \ wrench. (Photo # 53)

8. Loosen, but **Do Not Remove** rear OEM upper & lower control arm links. (Photo # 54) Loosen at OEM frame & axle mounts using a 21mm & 24mm socket \ wrench.



9. While checking for appropriate slack in ABS lines, brake lines, differential vent hose & etc. **RUBICON Models:** Watch rear locker connections.

Lower rear axle & remove OEM rear coil springs.

Tech Note: OEM upper coil spring isolators are Side Specific to properly align with coil \ frame mounts.

Place upper coil spring isolator in upper coil bucket. Mark orientation on isolator & upper coil bucket.

(Photo # 55)

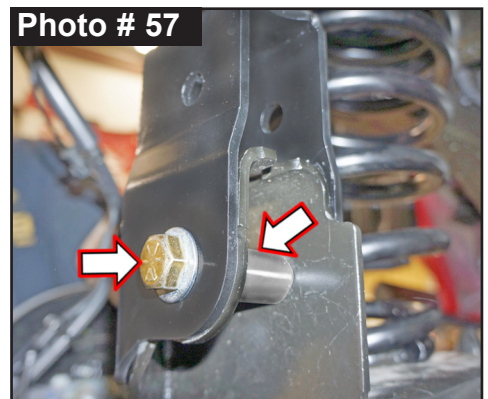
Mark top of isolators: DR & PA also. (Photo # 56)



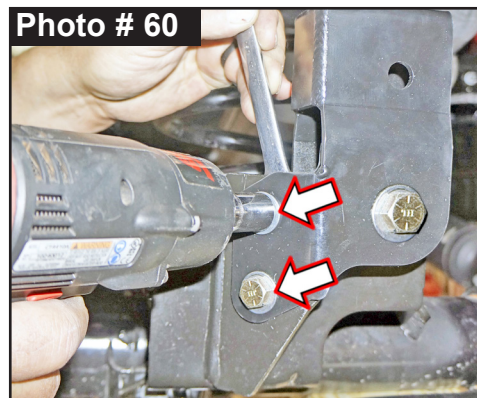
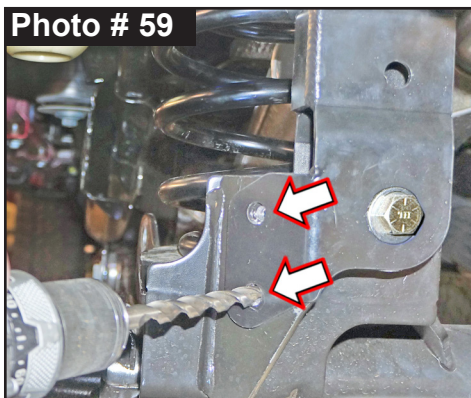
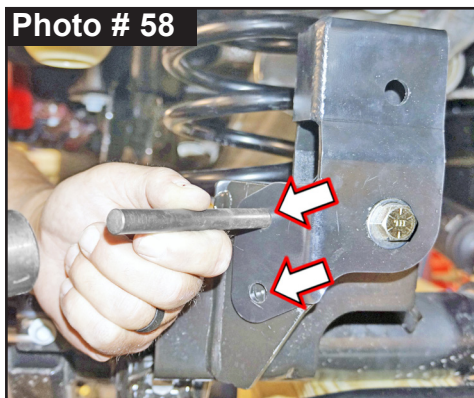
10. Place Skyjacker # JTGRTB-B Rear Lower Track Bar Bracket over OEM rear lower track bar bracket at axle. (Photo # 57)

Align bracket holes with OEM holes. Insert supplied 9/16" x 3-1/2" Fine Thread Bolt with 9/16 SAE Washer from rear-to-front through bracket \ axle mount. (Photo # 57)

Place #TBS1656 Crush Sleeve inside OEM mount & insert bolt through bracket \ axle mount. Attach with 9/16" SAE Washer & 9/16" Nylon Insert Lock Nut using a 13/16" & 7/8" socket \ wrench. (Photo # 57)

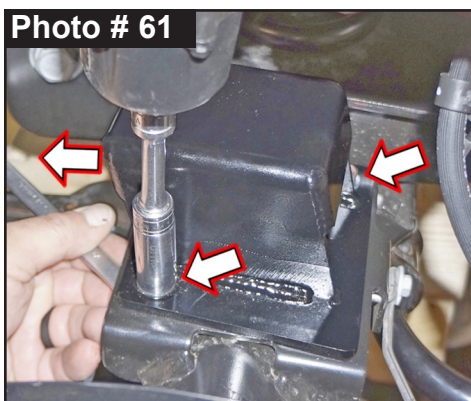


- Use Skyjacker bracket as a guide to mark \ scribe, center punch & drill two (2) support tab mounting locations Skyjacker bracket using a 7/16" drill bit. (Photo # 58 & # 59)
- Attach Skyjacker lower track bar bracket \ axle mount with supplied 7/16" x 1-1/4" Fine Thread Bolt with 7/16" SAE Washer outside & 7/16" SAE Washer with 7/16" Nylon Insert Lock Nut inside using a 5/8" socket \ wrench. (Photo # 60)



- Install Skyjacker # JTG30RBS-S Rear Bump Stop Spacer to each OEM rear axle bump stop pad with supplied 5/16" x 1" Fine Thread Bolt with a 5/16" SAE Washer on top & a 5/16" SAE Washer with 5/16" Nylon Insert Lock Nut on bottom using 1/2" wrenches. (Photo # 61)

Note: Install Skyjacker bump stop spacer with forward angle toward front of vehicle.



- Skyjacker Rear Coil Springs Are Two (2) Different Lengths \ Heights. Taller rear coil spring is to be installed on OEM fuel tank side of vehicle. Shorter rear coil spring is to be installed on opposite side of vehicle.

Install Skyjacker rear coil springs. (Photo # 62) **Note:** Be sure that tab of each OEM upper coil spring isolator is aligned with previous marks & tab hole of OEM upper coil spring mount. (Photo # 55 & # 56) Raise rear axle in order to load Skyjacker rear coil springs.

- Note:** Skyjacker Rear Upper Flex Are Not Side Specific. Assemble Skyjacker # GULR24-SX-L Rear Upper Flex Link with # RE114-640R Right Hand 1-1/4" Rod End & # 114RFTJN Jam Nut. (Photo # 63)

Measure length of Skyjacker Flex Link Arm assembly from centerline of rod end to centerline of bushing.

Tech Note: Be sure to keep ends square with each other. **Note:** These are pre-alignment measurements only. Final Measurements

are to be set by a qualified alignment facility. **Upper Rear = 16-5/8"**



16. On rod end, rotate jam nut against steel tubing. Hold rod end in place with a pipe wrench & use another pipe wrench or 1-13/16" wrench on jam nut to completely tighten. (Photo # 40 & # 41)

Tech Note: Jam nut must be tightened against steel tubing before installation.

Note: Perform Step 17 on One Side at a Time.

17. One side at a time, remove OEM rear upper link. (Photo # 64)

Install Skyjacker # GULR24-SX-L Rear Upper Flex Link assembly with OEM hardware using a 21mm & a 24mm socket \ wrench.

(Photo # 65) Secure, but **Do Not Completely Tighten.**

Tech Note: Install with bushing mount at upper frame mount & with rod end attached to OEM frame mount.



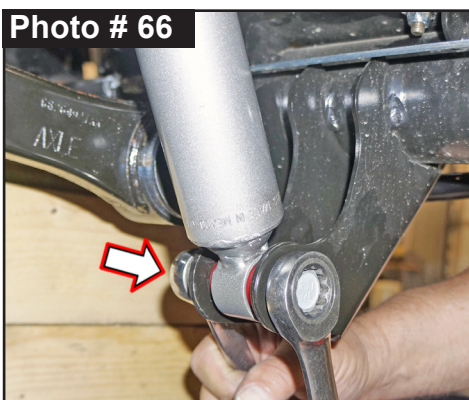
Note: Perform Step 17 on Opposite Side. Proceed to Next Steps.

NOTE: Kit With Black MAX \ M95 Monotube: Proceed to Step 18.

Kit With ADX 2.0 Remote Reservoir: Proceed to Step 19.

18. Install Skyjacker rear shock with OEM hardware using a 18mm socket \ wrench.

Secure, but Do Not Completely Tighten at this time. **Tech Note:** Black MAX & M95 Monotube are to be mounted with cylinder body down & rod end up for proper installation of pre-installed upper mount bushings. (Photo # 66 & # 67)

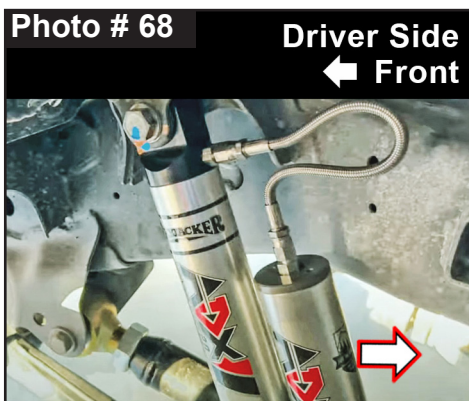


Secure, but **Do Not Completely Tighten.**

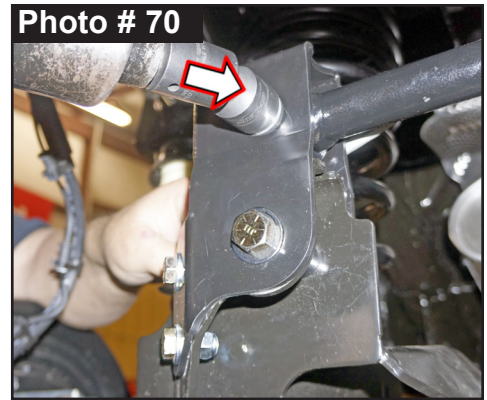
19. **Tech Note:** ADX Remote Reservoir are to be mounted with cylinder body up & remote reservoir toward rear for proper clearance. (Photo # 68 & # 69)

Loosely assemble two (2) supplied reservoir clamps with two (2) supplied hex head bolts using a hex key socket. Position clamp into place around shock & reservoir cylinder. Secure, but **Do Not Completely Tighten.**

Install Skyjacker ADX rear shock with OEM hardware using a 18mm socket \ wrench. Secure, but **Do Not Completely Tighten.**



20. Connect OEM rear track bar to Skyjacker lower track bar bracket \ axle mount with OEM bolt & tab nut using a 21mm socket \ wrench. (Photo # 70) **Note:** Install OEM bolt from rear-to-front of vehicle. **Tech Note:** It may be necessary to raise \ lower axle to align track bar bolt. Secure, but **Do Not Completely Tighten.**

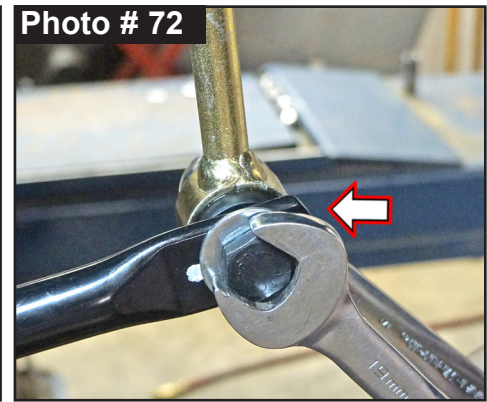
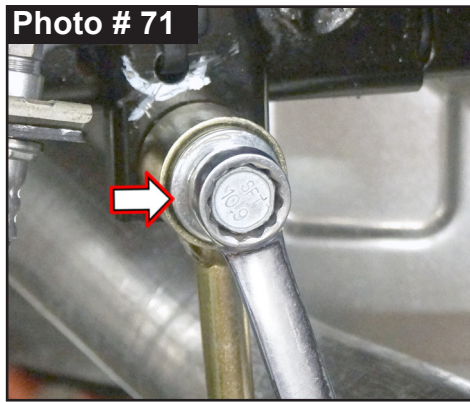


21. Skyjacker # SBE507-L Rear Sway Bar End Links Are Not Side Specific.

Coat supplied # 403712 1.25" Long Steel Sleeves with a water resistant grease.

Press Sleeves into supplied Sway Bar End Link Eyes.

22. Install Skyjacker upper end link mount to OEM frame mount with OEM hardware & supplied 7/16 USS Flat Washer to bushing side of end link using a 18mm socket \ wrench. (Photo # 71) Secure, but **Do Not Completely Tighten.**



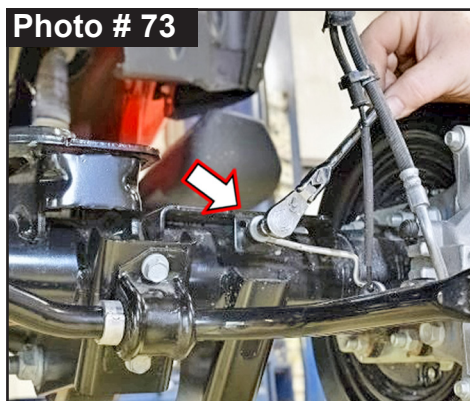
Install Skyjacker lower end link mount to OEM sway bar with supplied 12mm x 65mm Bolt with a 7/16" USS Washer from outside of vehicle inward through sway bar. Attach with a 7/16" USS Washer & 12mm Nylon Insert Lock Nut on inside

using a 18mm socket \ wrench. (Photo # 72) Secure, but **Do Not Completely Tighten.**

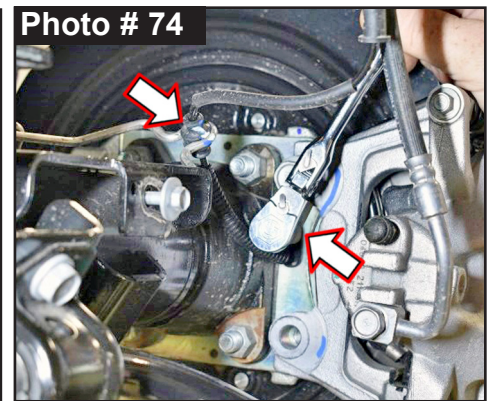
23. **Rubicon Models:** Reconnect OEM rear locker wiring harness to side of center differential housing. **Tech Note:** Pull out on connector to verify that it is securely plugged in properly. Follow OEM locker wiring harness up & reattach OEM wiring harness clamps to OEM emergency brake cable.

Continue up OEM locker wiring harness & re-clip two (2) wiring harness clips to driver side inner frame rail above axle.

24. Connect OEM ABS sensor to brake caliper bracket using a 8mm socket \ wrench. (Photo # 73)



25. Connect OEM ABS bracket to axle mount using a 10mm socket \ wrench. (Photo # 74)



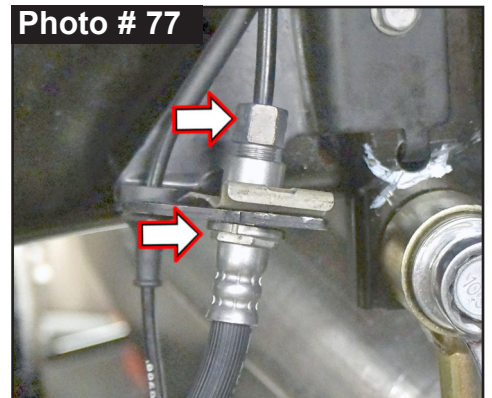
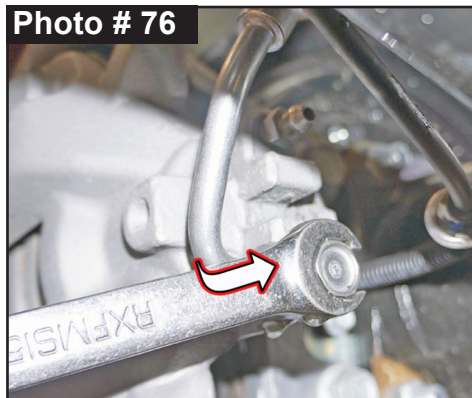
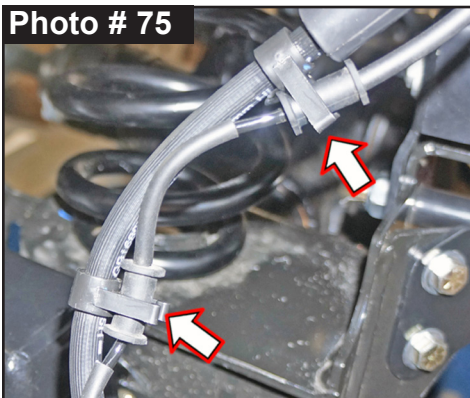
26. Connect OEM vent tube to rear axle using pliers.

NOTE: Brake line installation should be done by a professional mechanic. After installation of Skyjacker # RBL55-S Rear Brake Lines, vehicle's brake system will need to be bleed & purged of any air in lines before vehicle can be driven. It is suggested to familiarize yourself with brake bleeding process before beginning installation of Skyjacker brake lines. A brake bleeding tool is useful, but bleeding brake system should be done by two (2) professional mechanics.

27. Unclip all ABS line rubber grommets from OEM brake line rubber keepers. (Photo # 75)

Disconnect OEM brake line banjo fitting bolt at brake caliper using a 15mm brake line \ flare nut wrench. (Photo # 76)

Disconnect OEM brake line from frame mount using a 12mm & 16mm brake line \ flare nut wrench. (Photo # 77)



28. Remove OEM spring clip from frame mount using pliers or screwdriver. (Photo # 78)

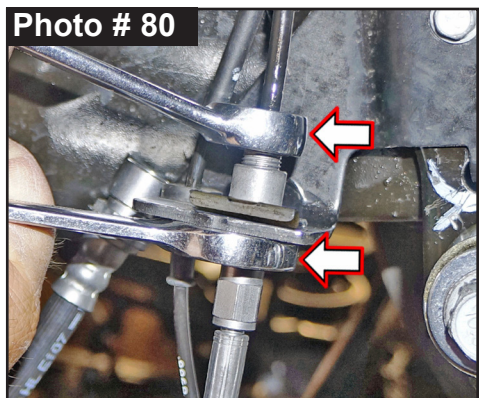
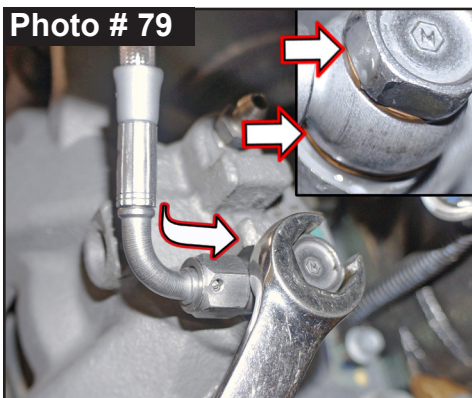
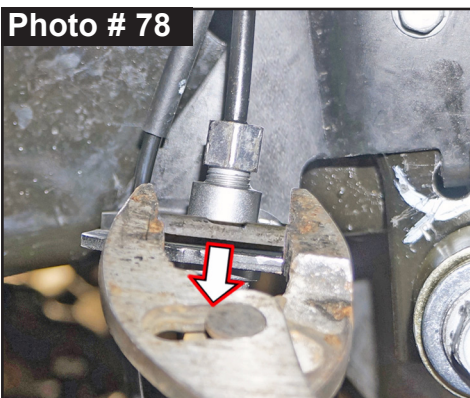
Attach Skyjacker brake line banjo fitting to OEM caliper with OEM banjo bolt & supplied 3/8" Copper Crush Washers. Install with one (1) supplied 3/8" Copper Crush Washer on each side of Skyjacker banjo fitting using a 15mm flare nut wrench. (Photo # 79)

Note: Install with brake line bend at same angle as OEM. Torque 26 ft-lbs.

Route Skyjacker brake line around suspension components same as OEM up to frame mount. Insert brake line fitting through OEM frame mount.

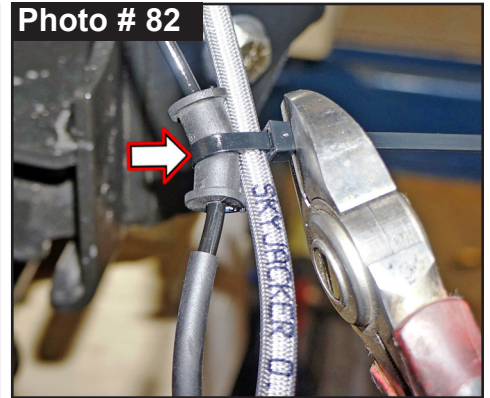
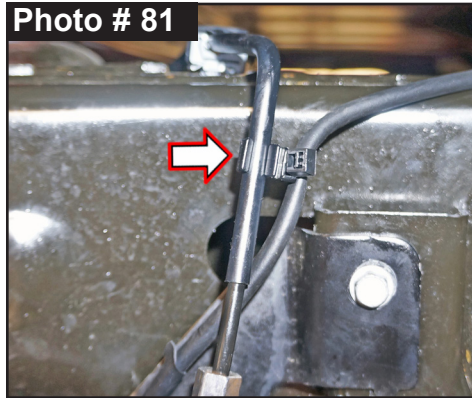
Carefully thread OEM male brake hard line nut into female fitting on Skyjacker brake line.

Note: Take care to not cross thread fittings. Tighten using a 12mm flare nut wrench on OEM brake line & a 5/8" flare nut wrench on Skyjacker brake line. (Photo # 80)



29. Install supplied Skyjacker #HC1 Brake Line Clip between OEM frame mount & top of Skyjacker brake line. Line up clip & tap it into position with a rubber mallet to secure it in place.
30. Lubricate OEM ABS line rubber grommets at frame using a spray lubricant. Adjust upward in order to reconnect OEM ABS line to OEM ABS line frame bracket.

31. Remove OEM ABS line clip on OEM hard brake line. Relocate downward with supplied plastic ties. Trim with diagonal cutting pliers. (Photo # 81)



32. Attach OEM ABS line at rubber grommets to Skyjacker brake lines with supplied plastic ties. Trim with diagonal cutting pliers. (Photo # 82)

33. Bleed air from brake system as instructed by OEM service manual. Avoid getting brake fluid on painted surfaces. **CAUTION: Do Not Drive Vehicle** until you have made sure that all air is out of brake line system & you have a firm brake pedal.

Check all brake line connections for leaks & tighten as necessary. **Tech Note:** A spray bottle of water works well to clean up residual brake fluid when installation is complete.

34. Install rear tires \ wheels using a 22mm socket. Lower vehicle to ground. Torque lugs to OEM service manual specifications.

Final Clearance Check & Torque Steps:

Note: Check Front Center Axle Disconnect (CAD) connection & on **RUBICON** Models: Check Front & Rear locker connections.

1. Start vehicle. Make sure there are no dash lights pertaining to suspension.
2. Jounce vehicle a couple of times. This will help suspension settle to new ride height. Cycle steering lock-to-lock & check all components for proper operation & clearances. Pay special attention to clearance between tires \ wheels & ADX Shocks & Reservoirs, control arms, brake hoses, ABS wiring, etc.

CAUTION: Make Sure ADX Shock Reservoir \ Reservoir Hose Does Not & Will Not Make Contact with Anything Throughout Full Travel Cycle of Suspension. (Tire \ wheel, frame rail, frame brackets, springs, brake lines, exhaust, etc.) For proper clearance, it may be necessary to change location or orientation of reservoir on shock body. Use a hex key socket to loosen clamps to position reservoir cylinder as needed.

3. Front Tighten & Torque Sequence.

Skyjacker track bar at frame using a 21mm wrench. Torque 52 ft-lbs. + 115°

Skyjacker track bar at axle using a 21mm wrench. Torque 52 ft-lbs. + 115°

Front shock absorber upper mount using a 18mm wrench. Torque 81 ft-lbs.

Front shock absorber lower mount using a 18mm wrench. Torque 74 ft-lbs.

ADX Reservoir clamp. Double check position & clearance. Tighten with hex key socket.

Skyjacker sway bar end link upper bolt using a 19mm socket \ wrench. Torque 59 ft-lbs.

Skyjacker sway bar end link lower bolt using a 18mm socket \ wrench. Torque 59 ft-lbs.

Skyjacker front lower links bolts using a 21mm & 24mm socket \ wrench. Torque 125 ft-lbs.

4. Rear Tighten & Torque Sequence.

Skyjacker track bar bracket bolts. 7/16" Bolts Torque 65 ft-lbs. 9/16" Bolt Torque 130 ft-lbs.

Track bar at Skyjacker bracket. Torque 130 ft-lbs.

Rear shock absorber upper mount using a 18mm socket \ wrench. Torque 81 ft-lbs.

Rear shock absorber lower mount using a 18mm socket \ wrench. Torque 74 ft-lbs.

ADX Reservoir clamp. Double check position & clearance. Tighten with hex key socket.

Skyjacker sway bar end link mounts using a 18mm socket \ wrench. Torque 59 ft-lbs.

Skyjacker rear upper links bolts using a 21mm & 24mm socket \ wrench. Torque 125 ft-lbs.

Final Notes:

- After installation is complete, double check that all nuts & bolts are tight. Refer to following chart for proper torque specifications. (**Note:** Do not re-tighten nuts & bolts where thread lock compound was used.)
- With vehicle placed on ground, cycle steering lock to lock & inspect steering, suspension, brake lines, front & rear drivelines, fuel lines & wiring harnesses for proper operation, tightness & adequate clearance.
- Have headlights readjusted to proper settings.
- Have a qualified alignment center align vehicle to OEM specifications.
- After first 100 miles, check all hardware for proper torque & periodically thereafter.

| TORQUE SPECIFICATIONS | | | | | |
|-----------------------|------------|------------|---------------|------------|------------|
| INCH SYSTEM | | | METRIC SYSTEM | | |
| Bolt Size | Grade 5 | Grade 8 | Bolt Size | Class 8.8 | Class 10.9 |
| 5/16 | 180 in-lbs | 240 in-lbs | 6MM | 60 in-lbs | 108 in-lbs |
| 3/8 | 30 ft-lbs | 35 ft-lbs | 8MM | 216 in-lbs | 23 ft-lbs |
| 7/16 | 45 ft-lbs | 60 ft-lbs | 10MM | 32 ft-lbs | 45 ft-lbs |
| 1/2 | 65 ft-lbs | 90 ft-lbs | 12MM | 55 ft-lbs | 75 ft-lbs |
| 9/16 | 95 ft-lbs | 130 ft-lbs | 14MM | 85 ft-lbs | 120 ft-lbs |
| 5/8 | 135 ft-lbs | 175 ft-lbs | 16MM | 130 ft-lbs | 165 ft-lbs |
| 3/4 | 185 ft-lbs | 280 ft-lbs | 18MM | 170 ft-lbs | 240 ft-lbs |

**Above Specifications Are Not to Be Used
When Bolt Is Being Installed With a Bushing.**

Seat Belts Save Lives, Please Wear Your Seat Belt.