

Component Box Breakdown:**Part # G350LT**

Item #	Description	Qty
JL12HDFS-DR	DUAL RATE COIL, FRONT	2
JTG20RMS-S	COIL SPRING SPACER, REAR	2
JL24LLFD-L	LOWER LINK FRONT, DR	1
JL24LLFP-L	LOWER LINK FRONT, PA	1
JLFTBA18-B	TRACK BAR, FRONT	1
34RFTJN	3/4 RIGHT HAND JAM NUT	1
HD34X34DTB	HD 3/4 ROD END / TRACK BAR	1
H-BOX G351	HWDR BOX: G350 / 351 KITS	1

Part # G350LTD

Item #	Description	Qty
G24HDFS-DR	HD DUAL RATE COIL, FRONT	2
JTG20RMS-S	COIL SPRING SPACER, REAR	2
JL24LLFD-L	LOWER LINK FRONT, DR	1
JL24LLFP-L	LOWER LINK FRONT, PA	1
JLFTBA18-B	TRACK BAR, FRONT	1
34RFTJN	3/4 RIGHT HAND JAM NUT	1
HD34X34DTB	HD 3/4 ROD END / TRACK BAR	1
H-BOX G351	HWDR BOX: G350 / 351 KITS	1

Part # G350RLT

Item #	Description	Qty
G23HDFS-DR	HD DUAL RATE COIL, FRONT	2
JTG20RMS-S	COIL SPRING SPACER, REAR	2
JL24LLFD-L	LOWER LINK FRONT, DR	1
JL24LLFP-L	LOWER LINK FRONT, PA	1
JLFTBA18-B	TRACK BAR, FRONT	1
34RFTJN	3/4 RIGHT HAND JAM NUT	1
HD34X34DTB	HD 3/4 ROD END / TRACK BAR	1
H-BOX G351	HWDR BOX: G350 / 351 KITS	1

Part # G350RLTD

Item #	Description	Qty
G34HDFS-DR	HD DUAL RATE COIL, FRONT	2
JTG20RMS-S	COIL SPRING SPACER, REAR	2
JL24LLFD-L	LOWER LINK FRONT, DR	1
JL24LLFP-L	LOWER LINK FRONT, PA	1
JLFTBA18-B	TRACK BAR, FRONT	1
34RFTJN	3/4 RIGHT HAND JAM NUT	1
HD34X34DTB	HD 3/4 ROD END / TRACK BAR	1
H-BOX G351	HWDR BOX: G350 / 351 KITS	1

Part # G35B

Item #	Description	Qty
B8387 (FRONT)	BLACK MAX SHOCK W/BLK BOOT	2
B8396 (REAR)	BLACK MAX SHOCK W/BLK BOOT	2

Part # G35M

Item #	Description	Qty
M9387 (FRONT)	M95 MONOTUBE SHOCK	2
M9396 (REAR)	M95 MONOTUBE SHOCK	2

Component Box Breakdown:**Part # G351LT**

Item #	Description	Qty
JL12HDFS-DR	DUAL RATE COIL, FRONT	2
G210RS-DR	DUAL RATE COIL, REAR 21.0	1
G215RS-DR	DUAL RATE COIL, REAR 21.5	1
JL24LLFD-L	LOWER LINK FRONT, DR	1
JL24LLFP-L	LOWER LINK FRONT, PA	1
JLFTBA18-B	TRACK BAR, FRONT	1
34RFTJN	3/4 RIGHT HAND JAM NUT	1
HD34X34DTB	HD 3/4 ROD END / TRACK BAR	1
H-BOX G351	HWDR BOX: G350 / 351 KITS	1

Part # G351LTD

Item #	Description	Qty
G24HDFS-DR	HD DUAL RATE COIL, FRONT	2
G210RS-DR	DUAL RATE COIL, REAR 21.0	1
G215RS-DR	DUAL RATE COIL, REAR 21.5	1
JL24LLFD-L	LOWER LINK FRONT, DR	1
JL24LLFP-L	LOWER LINK FRONT, PA	1
JLFTBA18-B	TRACK BAR, FRONT	1
34RFTJN	3/4 RIGHT HAND JAM NUT	1
HD34X34DTB	HD 3/4 ROD END / TRACK BAR	1
H-BOX G351	HWDR BOX: G350 / 351 KITS	1

Part # G351RLT

Item #	Description	Qty
JL23HDFS-DR	HD DUAL RATE COIL, FRONT	2
G215RS-DR	DUAL RATE COIL, REAR 21.5	1
G220RS-DR	DUAL RATE COIL, REAR 22.0	1
JL24LLFD-L	LOWER LINK FRONT, DR	1
JL24LLFP-L	LOWER LINK FRONT, PA	1
JLFTBA18-B	TRACK BAR, FRONT	1
34RFTJN	3/4 RIGHT HAND JAM NUT	1
HD34X34DTB	HD 3/4 ROD END / TRACK BAR	1
H-BOX G351	HWDR BOX: G350 / 351 KITS	1

Part # G351RLTD

Item #	Description	Qty
JL34HDFS-DR	HD DUAL RATE COIL, FRONT	2
G215RS-DR	DUAL RATE COIL, REAR 21.5	1
G220RS-DR	DUAL RATE COIL, REAR 22.0	1
JL24LLFD-L	LOWER LINK FRONT, DR	1
JL24LLFP-L	LOWER LINK FRONT, PA	1
JLFTBA18-B	TRACK BAR, FRONT	1
34RFTJN	3/4 RIGHT HAND JAM NUT	1
HD34X34DTB	HD 3/4 ROD END / TRACK BAR	1
H-BOX G351	HWDR BOX: G350 / 351 KITS	1

Part # G35X

Item #	Description	Qty
A2387 (FRONT)	ADX 2.0 REMOTE RESERVOIR	2
A2396 (REAR)	ADX 2.0 REMOTE RESERVOIR	2

Component Box Breakdown:**Part # G350PBLT**

Item #	Description	Qty
JL12HDFS-DR	DUAL RATE COIL, FRONT	2
JTG20RMS-S	COIL SPRING SPACER, REAR	2
JL24LLFD-L	LOWER LINK FRONT, DR	1
JL24LLFP-L	LOWER LINK FRONT, PA	1
JLFTBA18-B	TRACK BAR, FRONT	1
34RFTJN	3/4 RIGHT HAND JAM NUT	1
HD34X34DTB	HD 3/4 ROD END / TRACK BAR	1
H-BOX G351	HWDR BOX: G350 / 351 KITS	1
B8387 (FRONT)	BLACK MAX SHOCK W/BLK BOOT	2
B8396 (REAR)	BLACK MAX SHOCK W/BLK BOOT	2

Part # G350PBLTD

Item #	Description	Qty
G24HDFS-DR	HD DUAL RATE COIL, FRONT	2
JTG20RMS-S	COIL SPRING SPACER, REAR	2
JL24LLFD-L	LOWER LINK FRONT, DR	1
JL24LLFP-L	LOWER LINK FRONT, PA	1
JLFTBA18-B	TRACK BAR, FRONT	1
34RFTJN	3/4 RIGHT HAND JAM NUT	1
HD34X34DTB	HD 3/4 ROD END / TRACK BAR	1
H-BOX G351	HWDR BOX: G350 / 351 KITS	1
B8387 (FRONT)	BLACK MAX SHOCK W/BLK BOOT	2
B8396 (REAR)	BLACK MAX SHOCK W/BLK BOOT	2

Part # G350RPBLT

Item #	Description	Qty
JL23HDFS-DR	HD DUAL RATE COIL, FRONT	2
JTG20RMS-S	COIL SPRING SPACER, REAR	2
JL24LLFD-L	LOWER LINK FRONT, DR	1
JL24LLFP-L	LOWER LINK FRONT, PA	1
JLFTBA18-B	TRACK BAR, FRONT	1
34RFTJN	3/4 RIGHT HAND JAM NUT	1
HD34X34DTB	HD 3/4 ROD END / TRACK BAR	1
H-BOX G351	HWDR BOX: G350 / 351 KITS	1
B8387 (FRONT)	BLACK MAX SHOCK W/BLK BOOT	2
B8396 (REAR)	BLACK MAX SHOCK W/BLK BOOT	2

Part # G350RPBLTD

Item #	Description	Qty
JL34HDFS-DR	HD DUAL RATE COIL, FRONT	2
JTG20RMS-S	COIL SPRING SPACER, REAR	2
JL24LLFD-L	LOWER LINK FRONT, DR	1
JL24LLFP-L	LOWER LINK FRONT, PA	1
JLFTBA18-B	TRACK BAR, FRONT	1
34RFTJN	3/4 RIGHT HAND JAM NUT	1
HD34X34DTB	HD 3/4 ROD END / TRACK BAR	1
H-BOX G351	HWDR BOX: G350 / 351 KITS	1
B8387 (FRONT)	BLACK MAX SHOCK W/BLK BOOT	2
B8396 (REAR)	BLACK MAX SHOCK W/BLK BOOT	2

Component Box Breakdown:**Part # G350PMLT**

Item #	Description	Qty
JL12HDFS-DR	DUAL RATE COIL, FRONT	2
JTG20RMS-S	COIL SPRING SPACER, REAR	2
JL24LLFD-L	LOWER LINK FRONT, DR	1
JL24LLFP-L	LOWER LINK FRONT, PA	1
JLFTBA18-B	TRACK BAR, FRONT	1
34RFTJN	3/4 RIGHT HAND JAM NUT	1
HD34X34DTB	HD 3/4 ROD END / TRACK BAR	1
H-BOX G351	HWDR BOX: G350 / 351 KITS	1
M9387 (FRONT)	M95 MONOTUBE SHOCK	2
M9396 (REAR)	M95 MONOTUBE SHOCK	2

Part # G350PMLTD

Item #	Description	Qty
G24HDFS-DR	HD DUAL RATE COIL, FRONT	2
JTG20RMS-S	COIL SPRING SPACER, REAR	2
JL24LLFD-L	LOWER LINK FRONT, DR	1
JL24LLFP-L	LOWER LINK FRONT, PA	1
JLFTBA18-B	TRACK BAR, FRONT	1
34RFTJN	3/4 RIGHT HAND JAM NUT	1
HD34X34DTB	HD 3/4 ROD END / TRACK BAR	1
H-BOX G351	HWDR BOX: G350 / 351 KITS	1
M9387 (FRONT)	M95 MONOTUBE SHOCK	2
M9396 (REAR)	M95 MONOTUBE SHOCK	2

Part # G350RPMLT

Item #	Description	Qty
JL23HDFS-DR	HD DUAL RATE COIL, FRONT	2
JTG20RMS-S	COIL SPRING SPACER, REAR	2
JL24LLFD-L	LOWER LINK FRONT, DR	1
JL24LLFP-L	LOWER LINK FRONT, PA	1
JLFTBA18-B	TRACK BAR, FRONT	1
34RFTJN	3/4 RIGHT HAND JAM NUT	1
HD34X34DTB	HD 3/4 ROD END / TRACK BAR	1
H-BOX G351	HWDR BOX: G350 / 351 KITS	1
M9387 (FRONT)	M95 MONOTUBE SHOCK	2
M9396 (REAR)	M95 MONOTUBE SHOCK	2

Part # G350RPMLTD

Item #	Description	Qty
JL34HDFS-DR	HD DUAL RATE COIL, FRONT	2
JTG20RMS-S	COIL SPRING SPACER, REAR	2
JL24LLFD-L	LOWER LINK FRONT, DR	1
JL24LLFP-L	LOWER LINK FRONT, PA	1
JLFTBA18-B	TRACK BAR, FRONT	1
34RFTJN	3/4 RIGHT HAND JAM NUT	1
HD34X34DTB	HD 3/4 ROD END / TRACK BAR	1
H-BOX G351	HWDR BOX: G350 / 351 KITS	1
M9387 (FRONT)	M95 MONOTUBE SHOCK	2
M9396 (REAR)	M95 MONOTUBE SHOCK	2

Hardware Box Breakdown:

Part # H-BOX G351

Item #	Description	Qty
JTG20RBS-S	2.0 BUMP STOP BRACKET, RR	2
SBE4048-L	SWAY BAR END LINK, FRT	2
SBE506-L	SWAY BAR END LINK, RR	2
HB-ABSS2535	HDWR BAG: BUMP STOP, FRT	1
HB-JL24LLF	HDWR BAG: LOWER LINK FRT	1
HB-JLFTBB	HDWR BAG: TRACK BAR BRKT, F	1
HB-JTGRBS	HDWR BAG: BUMP STOP, RR	1
HB-JTGSBER	HDWR BAG: SB END LINK, RR	1
HB-SBENB24	HDWR BAG: SB END LINK, FRT	1
I-G350	INST SHEET: G350 / G351 KITS	1

Hardware Bag Breakdown:

Part # HB-ABSS2535

Item #	Description	Qty
ABSS2535	BUMP STOP SPACER, FRT	2
38X412BHB	3/8 X 4-1/2 BUTTON HEAD BOLT	2
38SAEW	3/8 SAE WASHER	2
38CTN	3/8 COARSE THRD N/I LOCK NUT	2

Part # HB-JL24LLF

Item #	Description	Qty
14X1FTB	1/4 X 1 FINE THREAD BOLT \ G8	4
14SAEW	1/4 SAE WASHER	8
14FTN	1/4-28 FINE THRD N/I LOCK NUT	4

Hardware Bag Breakdown:

Part # HB-JLFTBB

Item #	Description	Qty
JLFTBB	ROD END BUSHING / 0.563 ID	2

Part # HB-JTGRBS

Item #	Description	Qty
516X1FTB	5/16 X 1 FINE THREAD BOLT	4
516SAEW	5/16 SAE WASHER	8
516FTN	5/16 FINE THREAD N/I LOCK NUT	4

Part # HB-JTGSBER

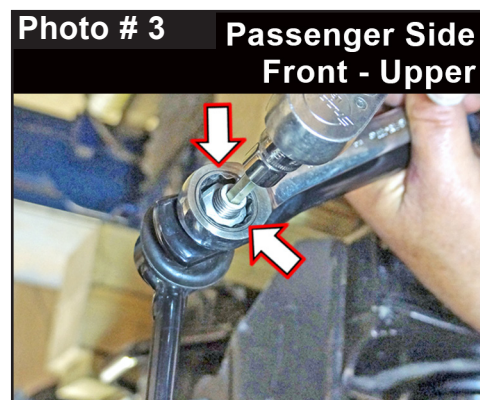
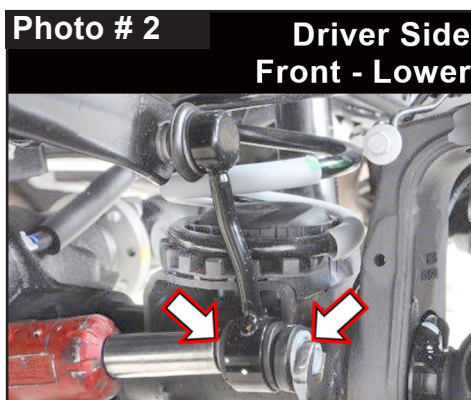
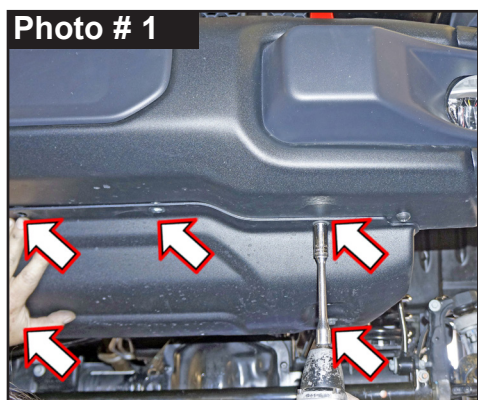
Item #	Description	Qty
HG58125-K	BLACK HOURGLASS BUSHING	4
403712	CRUSH SLEEVE / 1.25 LONG	4
12X65MMB	12MM X 65 METRIC BOLT	2
716USSW	7/16 USS FLAT WASHER	6
12MMN	12MM NYLON INSERT LOCK NUT	2

Part # HB-SBENB24

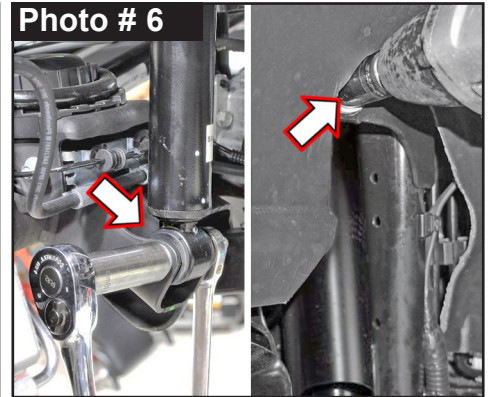
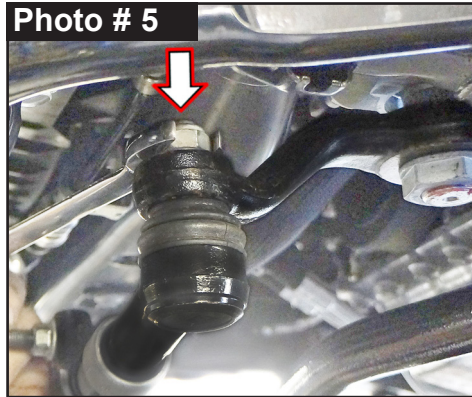
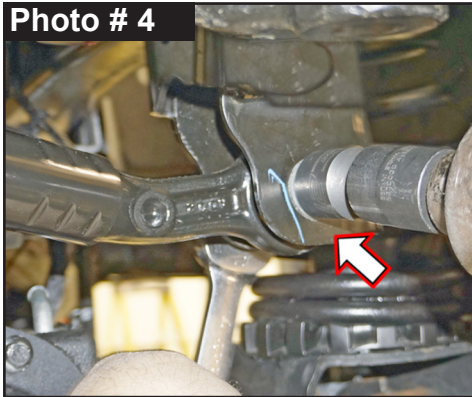
Item #	Description	Qty
1412BSG-S	SWAY BAR REDUCER BUSHING	2
141509	ES25 SLEEVE, 1.50 LONG	4
12X70MMB	12MM X 70MM METRIC BOLT	2
716USSW	7/16 USS FLAT WASHER	4
12MMN	12MM NYLON INSERT LOCK NUT	2

Front Installation: Note: Save all factory components & hardware for reuse, unless noted.

1. With vehicle on flat level ground, set emergency brake & chock rear tires \ wheels.
2. Raise front of vehicle, support frame rails using jack stands at indicated lift points in OEM service manual.
3. Remove front tires \ wheels using a 22mm socket.
4. Remove OEM front skid plate using a 13mm socket \ wrench. (Photo # 1)
5. Remove OEM front sway bar end link lower mount from OEM axle mount using a 18mm socket \ wrench. (Photo # 2)
6. Remove OEM front sway bar end link upper mount from OEM sway bar using a 6mm hex key socket \ wrench & 18mm socket \ wrench. (Photo # 3)



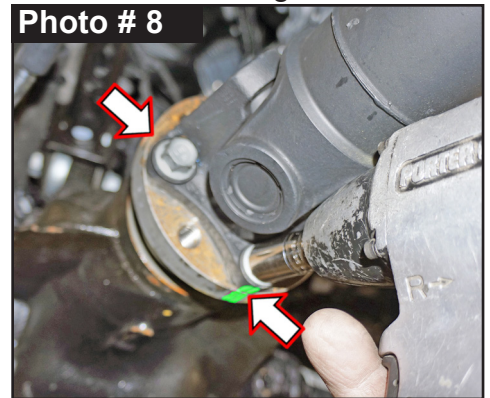
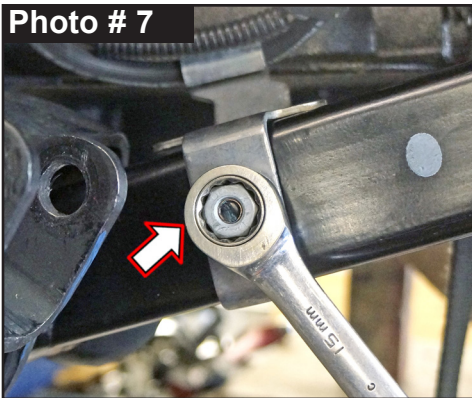
7. Disconnect OEM front track bar from frame mount using a 21mm socket \ wrench. (Photo # 4)
8. Disconnect OEM drag link from OEM pitman arm using a 21mm socket \ wrench. (Photo # 5)
9. Disconnect OEM front shock from upper shock tower mount & lower axle mount using a 18mm socket \ wrench. (Photo # 6)



10. Disconnect OEM front brake line bracket from OEM front lower control arms using a 15mm socket \ wrench. (Photo # 7)

11. For proper driveshaft reassembly realignment, mark position of OEM front differential flange & OEM driveshaft flange. (Photo # 8)

Remove four (4) OEM front driveshaft mounting bolts from OEM differential using a 15mm socket \ wrench.



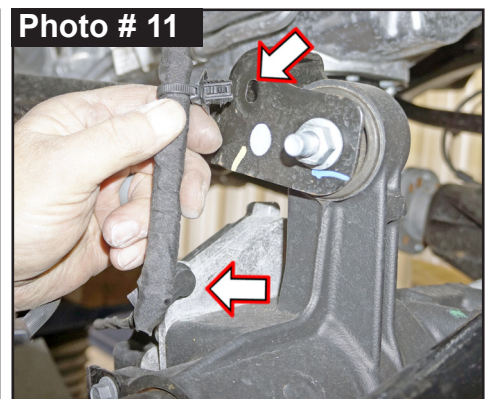
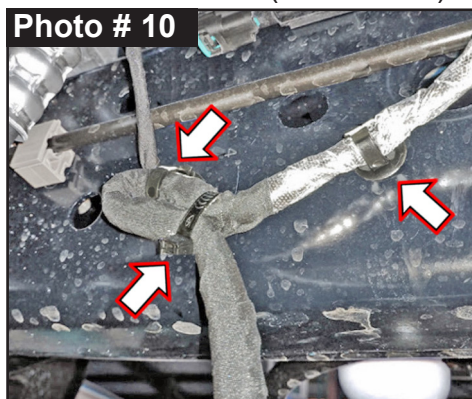
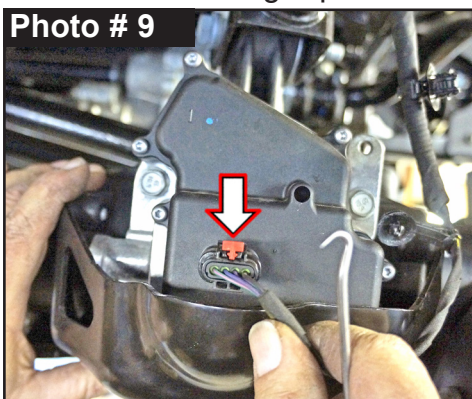
Tech Note: Secure driveshaft safely up & out of way with a bungee or other method.

12. OEM Center Axle Disconnect (CAD) 4WD Actuator, must be disconnected. Disconnect wiring harness from Passenger Side at OEM front upper control arm axle mount. (Photo # 9)

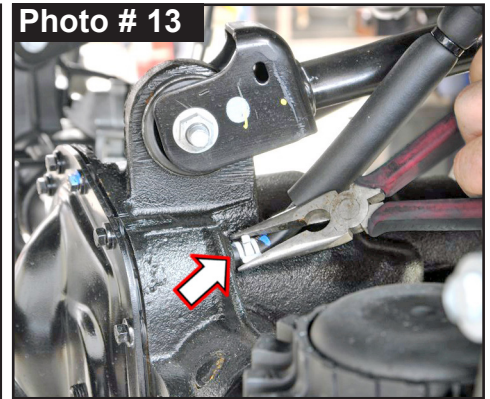
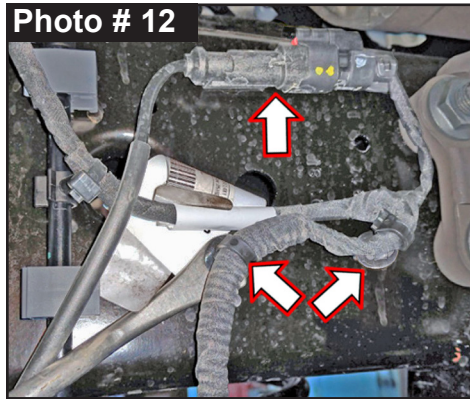
Tech Note: Red safety lock clip must be slid rearward to unlock. Press & hold rearward tang down, grab connector & pull away while from plug-in.

13. OEM Center Axle Disconnect (CAD) 4WD Actuator, on passenger side located at inner frame rail above axle, remove cable tie from wiring harness. Unclip wiring harness clips from frame using a plastic fastener removal tool. (Photo # 10)

OEM Center Axle Disconnect (CAD) 4WD Actuator, on passenger side unclip wiring clips from front axle using a plastic fastener removal tool. (Photo # 11)

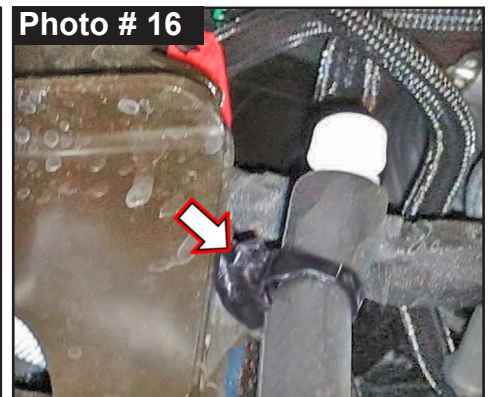
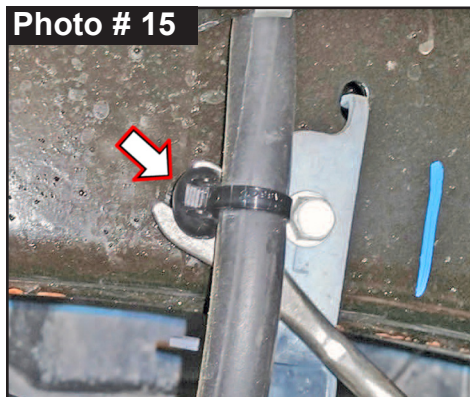
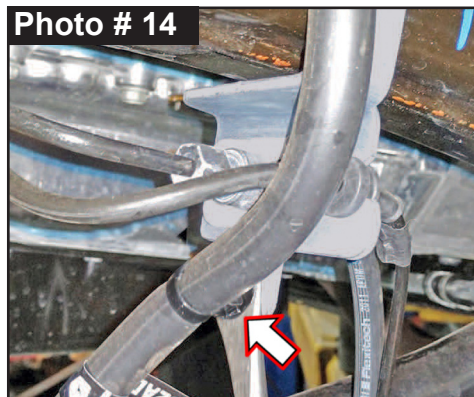


14. **Rubicon Models:** Disconnect OEM front locker. On driver side located at 'inner' frame rail above axle, unplug OEM harness plug. (Photo # 12) **Tech Note:** Red safety lock clip must be slid rearward to unlock. Press & hold rearward tang down, grab connector & pull away while from plug-in. Unclip wiring harness clips from frame using a plastic fastener removal tool. (Photo # 12)



15. Disconnect OEM vent hose clip from front differential using pliers. (Photo # 13)

16. Locate OEM brake line bracket attached on driver side frame to rear of shock tower. Unclip axle vent hose clip from brake line bracket using a plastic fastener removal tool. (Photo # 14) Follow vent tube up & unclip frame attachment using a plastic fastener removal tool. (Photo # 15) Continue to follow vent tube up & unclip from shock tower (behind OEM inner fender liner) using a plastic fastener removal tool. (Photo # 16)

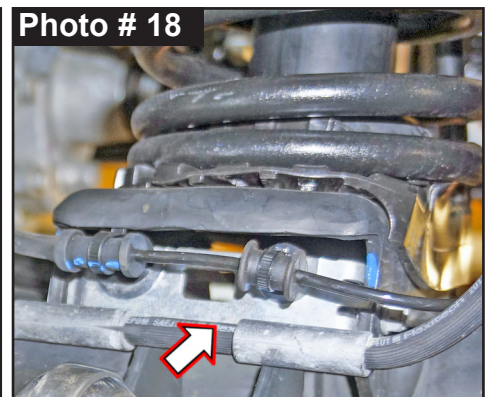
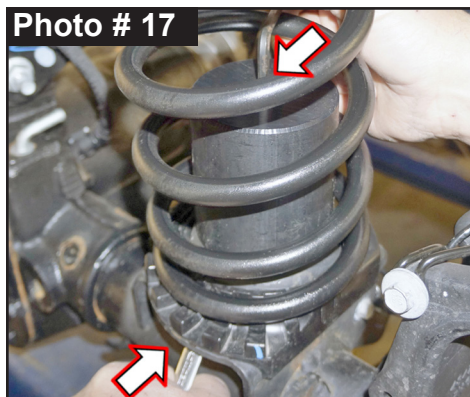


17. While checking for appropriate slack in ABS lines, brake lines, axle vent hose & etc. Lower front axle. Remove OEM front coil springs & rubber isolators.

18. Skyjacker Front Coil Springs Are Not Side Specific. Place Skyjacker # ABSS2535 Front Bump Stop Spacer inside Skyjacker Front Coil Spring.

Install front coil spring with bump stop spacer inside. Insert coil spring into upper tower first. **Note:** Make sure OEM coil spring isolator is properly aligned in upper OEM tab mount. Be sure coil is indexed to seat properly, then raise axle enough to hold coil springs in place.

Insert supplied 3/8" x 4-1/2" Button Head Bolt into bump stop spacer. Align bolt into hole of OEM lower spring mount pad. (Photo # 17)



Reach under spring mount pad & above axle tube to install supplied 3/8" SAE Washer & 3/8" Nylon Insert Lock Nut onto bolt. Tighten bump stop spacer into place using a 7/32" hex key socket \ wrench & 9/16" socket \ wrench. Torque 25 ft-lbs.

Tech Note: On passenger side, it may be necessary to remove ABS bracket to install bump stop spacer lock nut. At rear of axle above shock mount, remove ABS mounting bracket using a 10mm socket \ wrench. (Photo # 18) Once bump stop spacer is installed, reinstall ABS bracket.

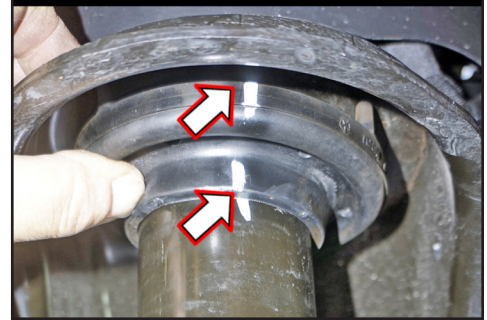
19. Raise front axle to load Skyjacker front coil springs.

Note: There has been occasional reports of passenger side coil spring having an inward bow after installation. If so, OEM upper coil spring isolator can be rotated 180 degrees.

Mark OEM position of passenger side OEM upper coil spring isolator. (Photo # 19) Remove two (2) alignment pins on top of passenger side OEM upper coil spring isolator using diagonal cutting pliers or similar tool.

Rotate passenger side OEM upper coil spring isolator so thicker portion is on inside toward frame.

Photo # 19 Passenger Side Front ➔



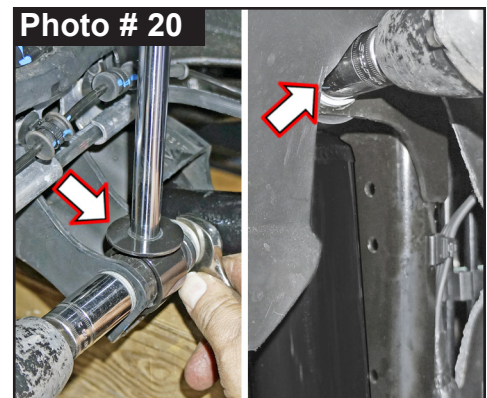
- NOTE: Kit With Black MAX \ M95 Monotube: Proceed to Step 20.**
Kit With ADX 2.0 Remote Reservoir: Proceed to Step 21.

20. Install Skyjacker front shock with OEM hardware at upper shock tower mount using a 18mm socket \ wrench. Secure, but **Do Not Completely Tighten** at this time. (Photo # 20)

Tech Note: Black MAX & M95 Monotube are to be mounted with cylinder body up for proper installation of pre-installed upper mount bushings.

Note: Upper shock mount has a OEM fixed nut welded onto frame. Be careful not to dislodge nor over tighten this nut.

Connect Skyjacker shock at lower axle mount with OEM hardware using a 18mm socket \ wrench. (Photo # 20) Secure, but **Do Not Completely Tighten** at this time. To set bushings properly for ride height, these will be tightened once vehicle is on ground with full vehicle weight on tires \ wheels.



21. **Tech Note:** ADX Remote Reservoir are to be mounted with cylinder body up & remote reservoir toward rear for proper clearance (opposite side of coil spring mount). (Photo # 21 & # 22)

Locate Skyjacker ADX front shock. Loosely assemble two (2) supplied reservoir clamps with two (2) supplied hex head bolts using a hex key socket (one (1) front & one (1) back).

Position clamp into place around shock body & reservoir cylinder. Secure, but **Do Not Completely Tighten**.

Photo # 21 Driver Side ← Front



Photo # 22 Passenger Side Front ➔



Install Skyjacker ADX front shock. Connect upper shock mount with OEM hardware at upper shock tower mount using a 18mm socket \ wrench. **Note:** Upper shock mount has a OEM fixed nut welded onto frame. Be careful not to dislodge nor over tighten this nut.

Connect lower axle mount with OEM hardware using a 18mm socket \ wrench. Secure, but **Do Not Completely Tighten** at this time. To set bushings properly for ride height, these will be tightened once vehicle is on ground with full vehicle weight on tires \ wheels.

22. **Note:** Skyjacker Sway Bar End Links Are Not Side Specific. Installation Direction \ Position Is Side Specific. (Photo # 23)

Coat supplied # ES25 1.50 Long Steel Sleeves with a water resistant grease.

Press Sleeves into supplied Sway Bar End Link Eyes.

Photo # 23 View from Front
PA Side DR Side

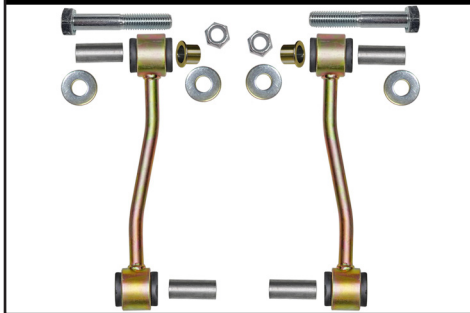


Photo # 24 View from Front
Driver Side



23. **Note:** Skyjacker # 1412BSG-S Sway Bar Reducer Bushing is supplied for **All 2024+ Models.**

Insert Sway Bar Reducer Bushing into OEM sway bar from outside-to-inside.

(Photo # 24)

24. Install Skyjacker Sway Bar End Link Assembly upper eye mount with supplied 12mm x 70mm Bolt with a 7/16" USS Washer from inside-to-outside through sway bar.

Attach with a 7/16" USS Washer & 12mm Nylon Insert Lock Nut using a 19mm socket \ wrench. (Photo # 25) Secure, but **Do Not Completely Tighten.**

25. Install Skyjacker Sway Bar End Link Assembly lower eye mount with OEM hardware using a 18mm socket \ wrench. (Photo # 26) Secure, but **Do Not Completely Tighten.**

Note: On Driver Side, install lower OEM bolt head with large washer from inside-to-outside through outer bushing side of end link. (Photo # 27) Secure, but **Do Not Completely Tighten.**

Photo # 25 Driver Side
Front - Upper

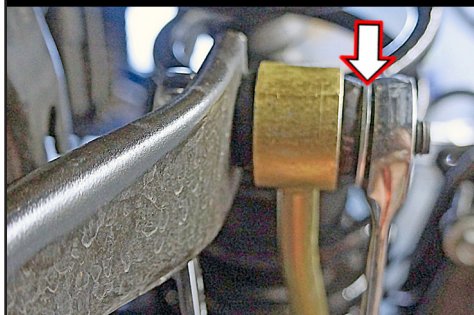


Photo # 26 Passenger Side
Front - Lower

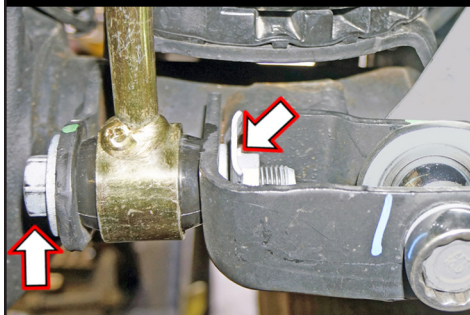
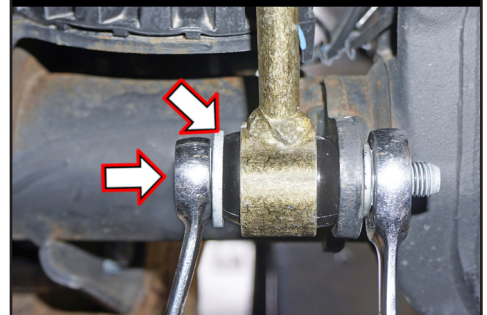


Photo # 27 Driver Side
Front - Lower

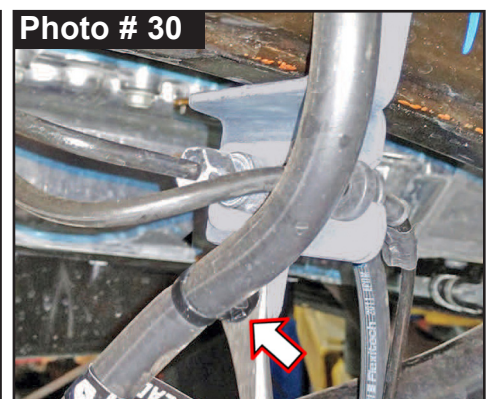
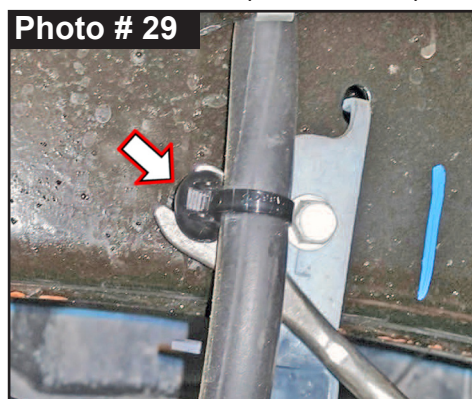
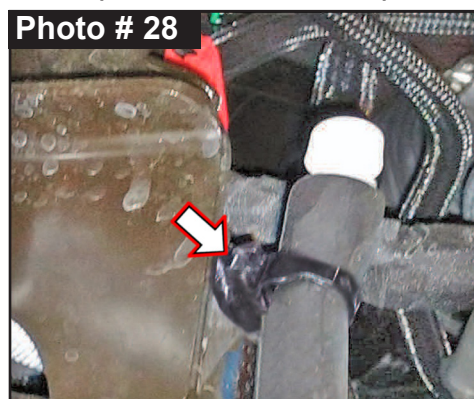


26. Connect OEM axle vent hose at OEM mounts.

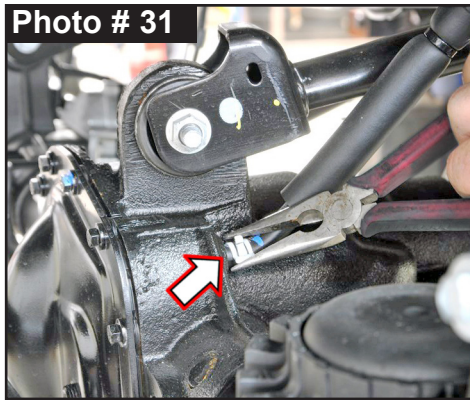
Clip at shock tower mount (behind OEM inner fender liner). (Photo # 28)

Clip at frame attachment. (Photo # 29)

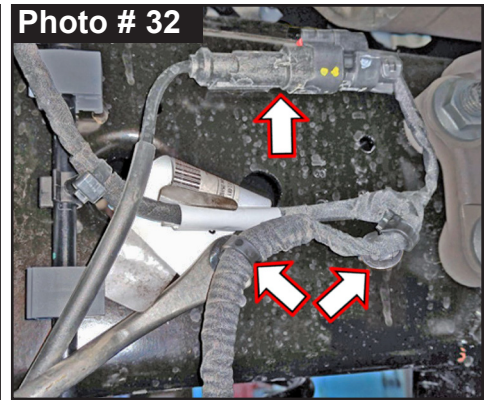
Clip axle vent hose clip to brake line bracket. (Photo # 30)



27. Connect OEM vent hose \ clip to front differential using pliers. (Photo # 31)



28. **Rubicon Models:** Connect OEM front locker on driver side. (Photo # 32) **Tech Note:** Pull out on connector to verify that it is securely plugged in properly.

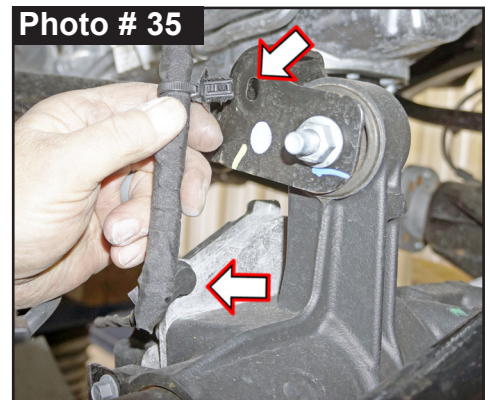
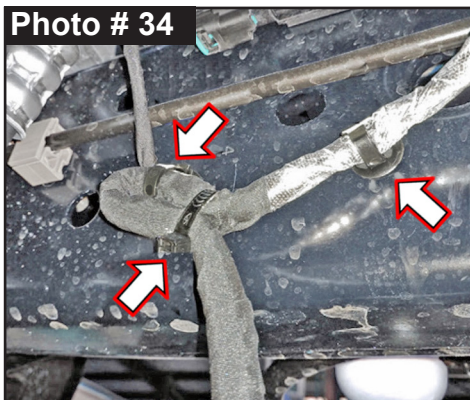
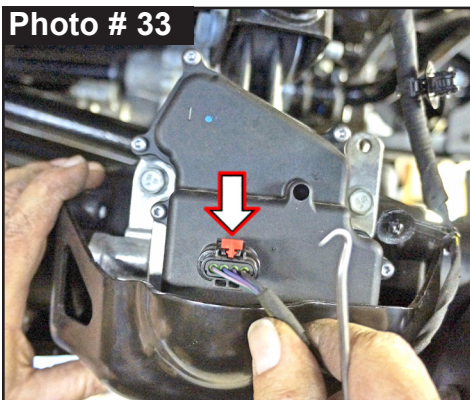


Clip wiring harness clips to frame. (Photo # 32)

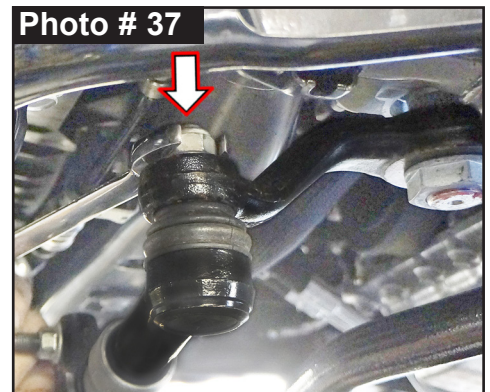
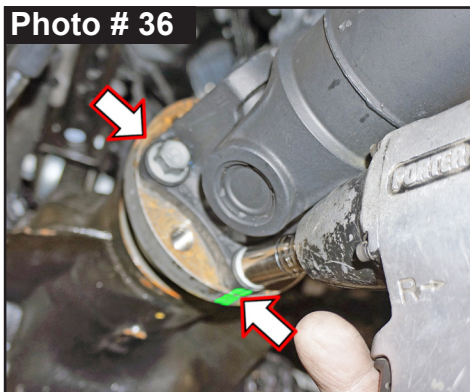
29. Connect OEM Center Axle Disconnect (CAD) 4WD Actuator, on passenger side located at inner frame rail above axle. (Photo # 33) **Tech Note:** Pull out on connector to verify that it is securely plugged in properly.

Attach wiring harness clip to frame. (Photo # 34)

Attach wiring clip to front axle. (Photo # 35)



30. Raise front axle to align marks on OEM front driveshaft \ flange & connect driveshaft with OEM hardware using a 15mm socket \ wrench. (Photo # 36) Torque 89 ft-lbs.



31. Connect OEM drag link to OEM pitman arm with OEM hardware using a 21mm socket \ wrench. (Photo # 37) **Note:** Drag Link Must Be Adjusted to Center the Steering Wheel Before the Vehicle Is Driven. Failure to Do So Will Cause Computer Errors, Odd Handling Characteristics, & Poor Performance.

Note: Perform Steps 32-35 on One Side at a Time.

32. Remove OEM front lower control arm from front axle mount & upper frame mount using a 21mm & 24mm socket \ wrench. (Photo # 38 & # 39)

33. Skyjacker Front Lower Links Are Side Specific:

JL24LLFD-L Driver Side & # JL24LLFP-L Passenger Side. **Note:** Install Skyjacker Front Lower Link with brake line bracket tab toward outside \ front & link offset bend toward inside of vehicle. (Photo # 40)

Photo # 38

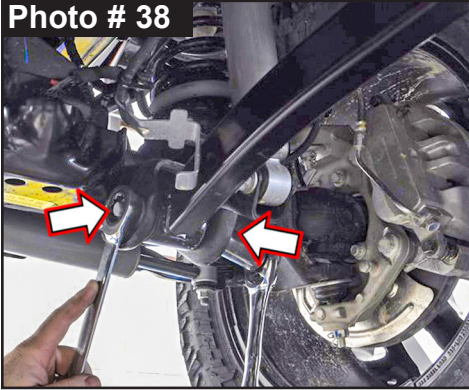


Photo # 39

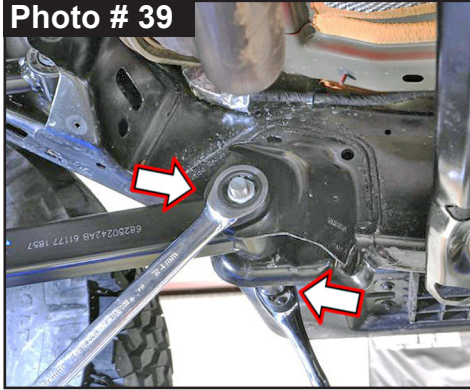
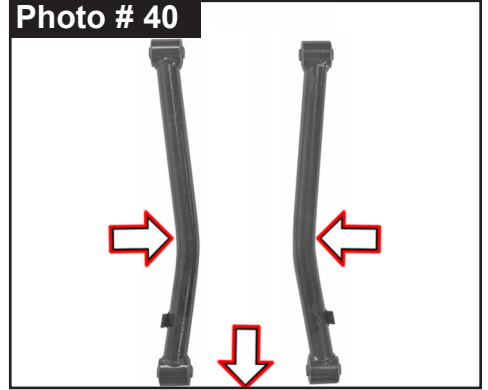


Photo # 40



34. Install appropriate Skyjacker Front Lower Link with OEM hardware.

Insert OEM hardware from inside-to-outside.

Attach using a 21mm & 24mm socket \ wrench. (Photo # 41 & # 42)

Secure, but **Do Not Completely Tighten** at this time. To set bushings properly for ride height, these will be tightened once vehicle is on ground with full vehicle weight on tires \ wheels.

35. Attach OEM front brake line bracket to inside of Skyjacker Link brake line bracket tab with supplied 1/4" x 1" Fine Thread Bolt with 1/4" SAE Washer. Attach with 1/4" SAE Washer & 1/4" Nylon Insert Lock Nut using a 7/16" socket \ wrench. (Photo # 43)

Photo # 41

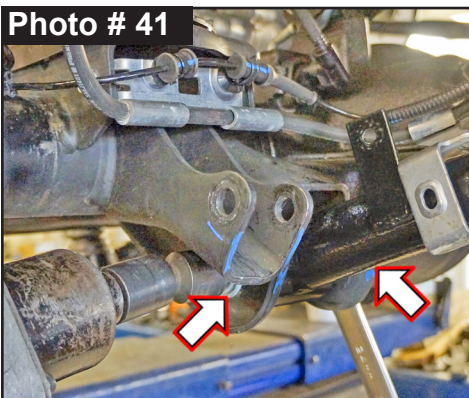


Photo # 42

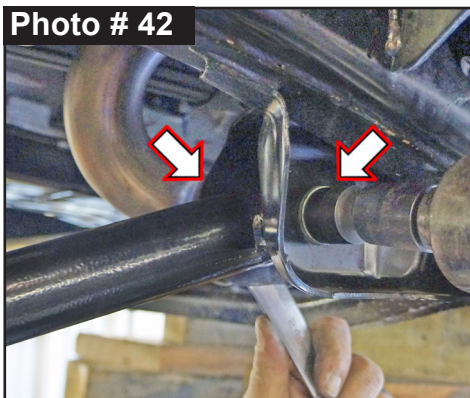
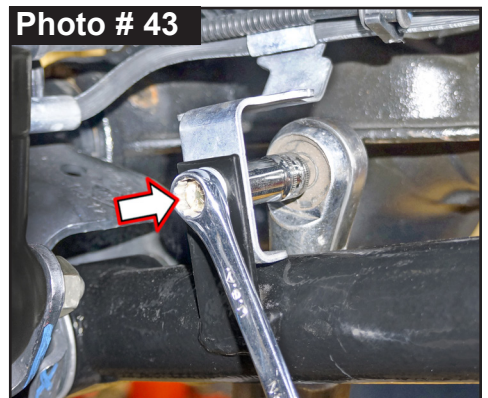


Photo # 43

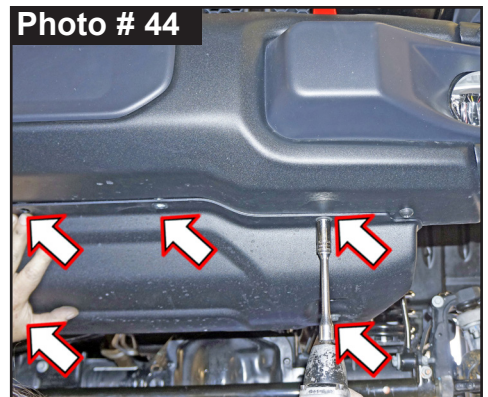


**Note: Perform Steps 32-35 on Opposite Side.
Then Proceed to Step 36.**

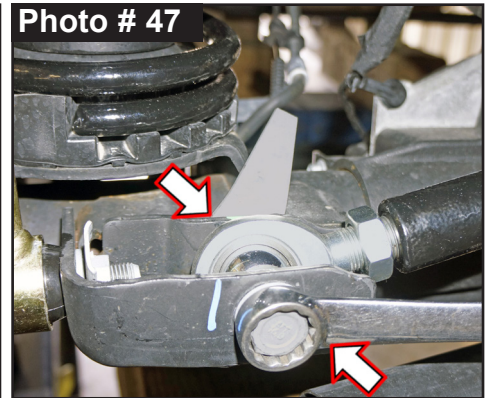
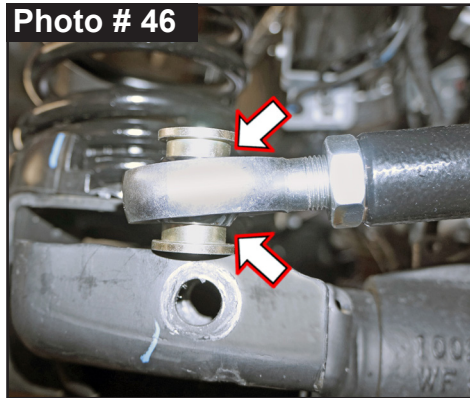
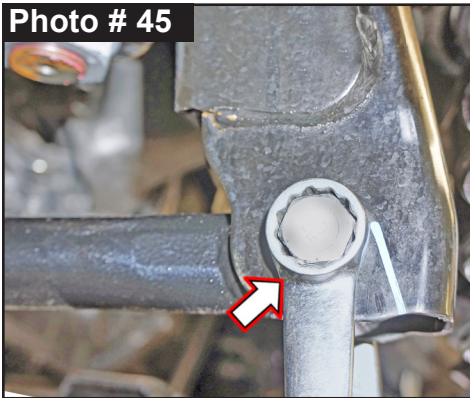
36. Install OEM front skid plate with OEM hardware using a 13mm socket \ wrench. (Photo # 44)

37. Install front tires \ wheels using a 22mm socket. Lower vehicle to ground. Torque lugs to OEM service manual specifications.

Photo # 44



38. Make sure that tires \ wheels are pointed straight ahead. Install fixed end of Skyjacker # JLFTBA18-B Front Adjustable Track Bar to frame with OEM hardware using a 21mm socket \ wrench. (Photo # 45) Secure, but **Do Not Completely Tighten** at this time.
39. Install supplied # JLFTBB Rod End Bushings onto rod end of Skyjacker track bar. (Photo # 46) Install rod end assembly into front axle mount with OEM hardware using a 21mm socket \ wrench. (Photo # 47) **Note:** Secure, but **Do Not Completely Tighten** at this time.
Tech Note: It may be necessary to turn steering wheel to align track rod end with mount.



40. **Adjust \ Align Track Bar:** Check front of vehicle to make sure body is centered over front tires \ wheels. Using a measuring tape, measure from inside of tire to frame on driver side, then measure passenger side.

Compare two measurements; aim is to make both sides equal. **Note:** If driver side measurement is greater than passenger side, track bar needs to be lengthened. If passenger side measurement is greater than driver side, track bar needs to be shortened. Remove adjustable rod end of track bar, loosen jam nut using a 1-1/8" wrench & turn rod end to adjust in or out. Once body is properly aligned over front tires \ wheels, tighten OEM hardware using a 21mm socket \ wrench.

Fully tighten all OEM hardware at upper frame mount & axle mount. Fully tighten jam nut of Skyjacker adjustable front track bar using a 1-1/8" wrench.

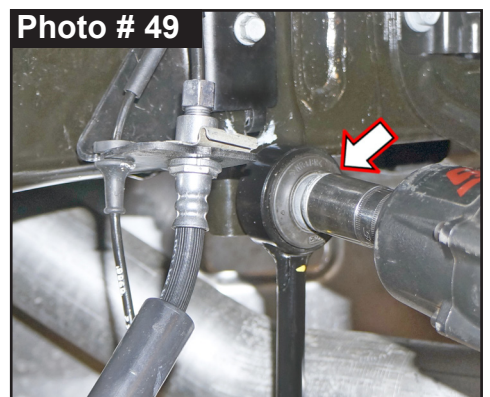
Rear Installation: Note: Save all factory components & hardware for reuse, unless noted.

1. Chock front tires \ wheels. Raise rear of vehicle & support frame rails using jack stands at indicated lift points in OEM service manual.
2. Remove rear tires \ wheels using a 22mm socket.

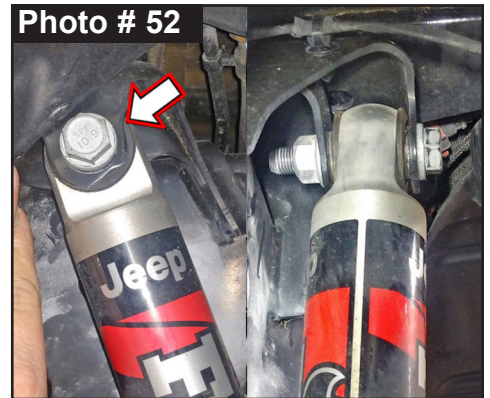
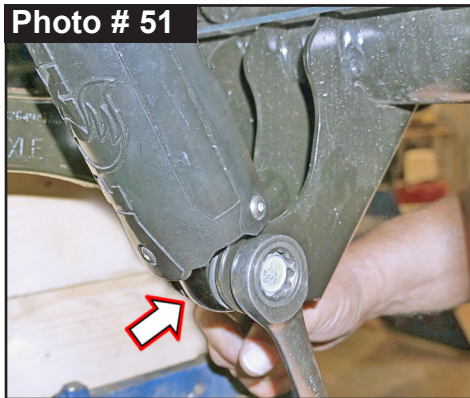
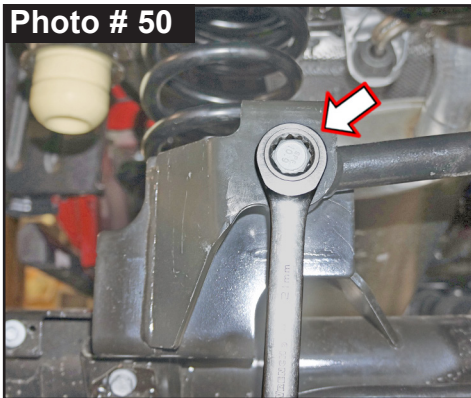
3. Remove OEM rear sway bar end link. Disconnect lower link at sway bar using a 6mm hex key socket \ wrench & 18mm socket \ wrench. (Photo # 48)



Disconnect upper link at outside frame using a 21mm socket \ wrench. (Photo # 49)



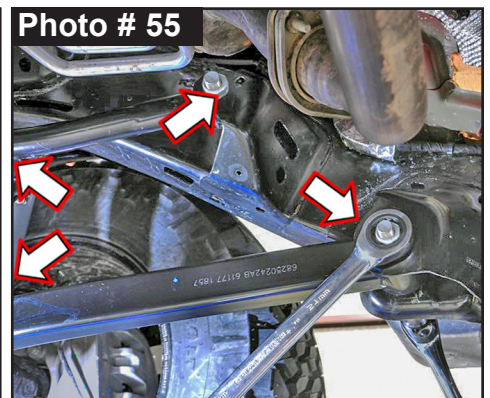
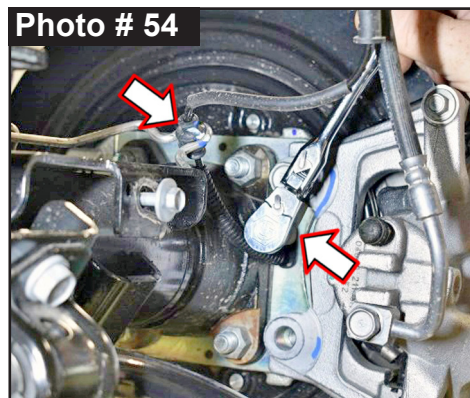
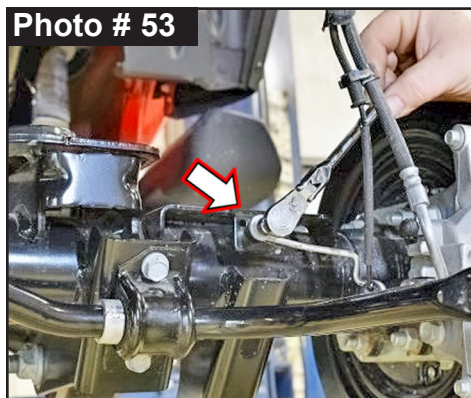
4. Disconnect OEM rear track bar from rear axle mount using a 21mm socket \ wrench. (Photo # 50) **Tech Note:** It may be necessary to raise \ lower axle to take pressure off track bar bolt. Retain OEM hardware.
5. Disconnect OEM rear shock at upper & lower hardware using a 21mm socket \ wrench. (Photo # 51 & # 52) Remove OEM rear shocks & retain hardware.



6. **Rubicon Models:** OEM rear locker must be disconnected so wiring connectors are not over-extended. On rear axle, unplug locker wiring harness from side of center differential housing. **Tech Note:** Safety lock clip must be slid rearward to unlock. Press & hold rearward tang down, grab connector & pull away while from plug-in.

Follow OEM locker wiring harness up & unclip harness clamps from emergency brake cable. Continue up OEM locker wiring harness & unclip two (2) wiring harness clips from driver side inner frame rail above axle using a plastic fastener removal tool.

7. Disconnect OEM ABS bracket from axle mount using a 10mm socket \ wrench. (Photo # 53) Disconnect OEM ABS sensor from brake caliper bracket using a 8mm socket \ wrench. (Photo # 54)
8. Loosen, but **Do Not Remove** rear OEM upper & lower control arm links. (Photo # 55) Loosen at OEM frame & axle mounts using a 21mm & 24mm socket \ wrench.



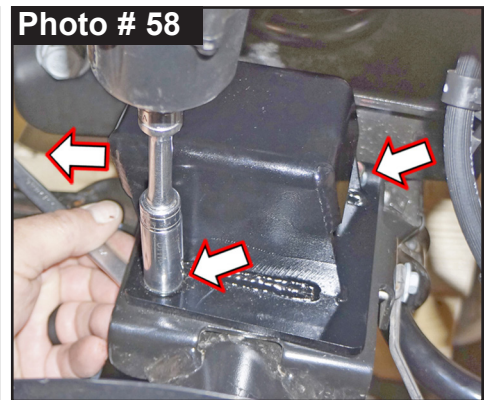
9. While checking for appropriate slack in ABS lines, brake lines, differential vent hose & etc. **RUBICON Models:** Watch rear locker connections. Lower rear axle & remove OEM rear coil springs. **Tech Note:** OEM upper coil spring isolators are Side Specific to properly align with coil \ frame mounts.

10 Place upper coil spring isolator in upper coil bucket. Mark orientation on isolator & upper coil bucket. (Photo # 56)

Mark top of isolators: DR & PA also. (Photo # 57)

11. Install Skyjacker # JTG20RBS-S Rear Bump Stop Spacer to each OEM rear axle bump stop pad with supplied 5/16" x 1" Fine Thread Bolt with a 5/16" SAE Washer on top & a 5/16" SAE Washer with 5/16" Nylon Insert Lock Nut on bottom using 1/2" wrenches. (Photo # 58)

Note: Install Skyjacker bump stop spacer with forward angle toward front of vehicle.



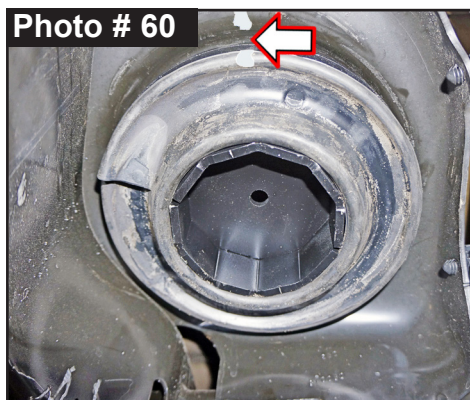
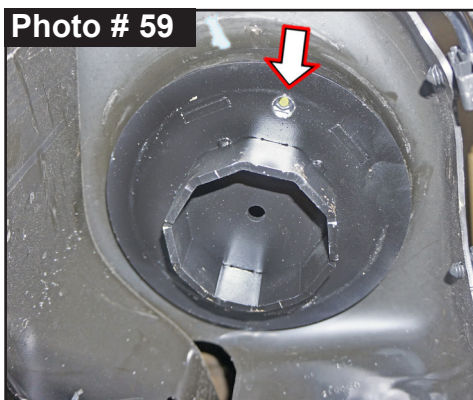
NOTE: Kit With Replacement Rear Coil Springs: Proceed to Steps 12-13.

Kit With Rear Coil Spring Spacers: Proceed to Steps 14.

12. Skyjacker # JTG20RMS-S Rear Coil Spring Spacers Are Not Side Specific.

To help hold Skyjacker # JTG20RMS-S Rear Coil Spring Spacer in place during installation, supplied \ attached 1/4" x 3/4" Course Thread Bolt installs from topside of OEM rear coil spring mount down into spacer. **Tech Note:** Install bolt from outside frame rail using a 7/16" wrench. (Photo # 59)

13. Install appropriate OEM rear coil spring isolator. (Photo # 60) **Note:** Be sure that tab of each OEM upper coil spring isolator is aligned with previous marks & tab hole of OEM upper coil spring mount. (Photo # 56 & # 57) Install OEM rear coil springs. (Photo # 61) **Proceed to Step 15.**



14. Skyjacker Rear Coil Springs Are Two (2) Different Lengths \ Heights. Taller rear coil spring is to be installed on OEM fuel tank side of vehicle. Shorter rear coil spring is to be installed on opposite side of vehicle.

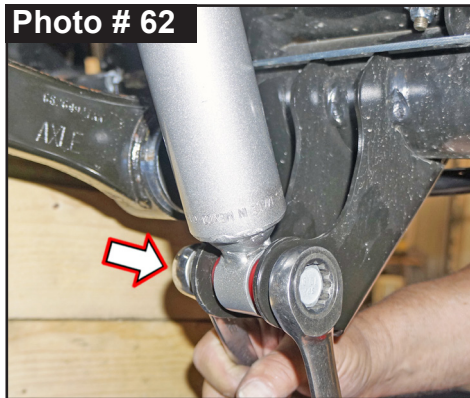
Install appropriate OEM rear coil spring isolator & Skyjacker rear coil spring. (Photo # 61)

Note: Be sure that tab of each OEM upper coil spring isolator is aligned with previous marks & tab hole of OEM upper coil spring mount. (Photo # 56 & # 57)

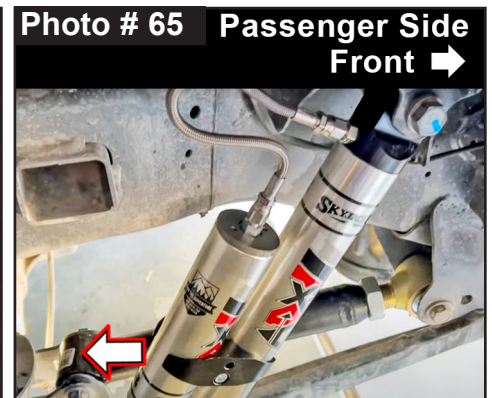
Raise rear axle in order to load Skyjacker rear coil springs. **Proceed to Next Steps.**

**NOTE: Kit With Black MAX \ M95 Monotube: Proceed to Step 15.
Kit With ADX 2.0 Remote Reservoir: Proceed to Step 16.**

15. Install Skyjacker rear shock with OEM hardware using a 18mm socket \ wrench. (Photo # 62 & # 63) Secure, but **Do Not Completely Tighten**. **Tech Note:** Black MAX & M95 Monotube are to be mounted with cylinder body down & rod end up for proper installation of pre-installed upper mount bushings. **Proceed to Step 17.**



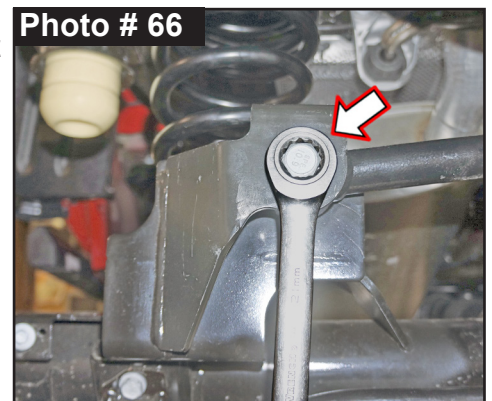
16. **Tech Note:** ADX Remote Reservoir are to be mounted with cylinder body up & remote reservoir toward rear for proper clearance. (Photo # 64 & # 65)



Loosely assemble two (2) supplied reservoir clamps with two (2) supplied hex head bolts using a hex key socket. Position clamp into place around shock & reservoir cylinder. Secure, but **Do Not Completely Tighten**.

Install Skyjacker ADX rear shock with OEM hardware using a 18mm socket \ wrench. Secure, but **Do Not Completely Tighten**. **Proceed to Step 17.**

17. Connect OEM rear track bar to rear axle mount with OEM bolt & tab nut using a 21mm socket \ wrench. (Photo # 66)
Tech Note: It may be necessary to raise \ lower axle to align track bar bolt. Secure, but **Do Not Completely Tighten**.

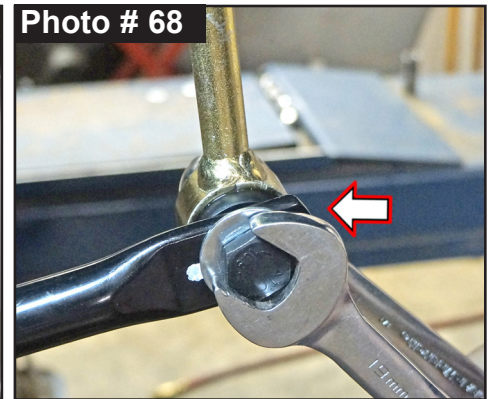
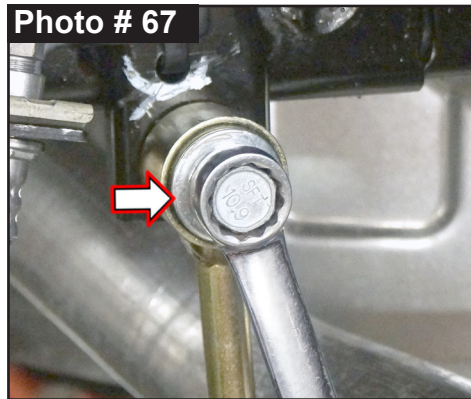


18. Skyjacker # SBE507-L Rear Sway Bar End Links Are Not Side Specific.

Coat supplied # 403712 1.25" Long Steel Sleeves with a water resistant grease.

Press Sleeves into supplied Sway Bar End Link Eyes.

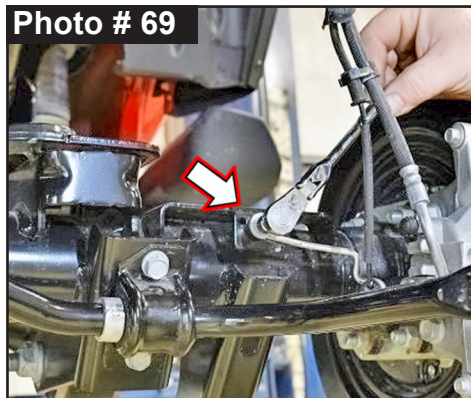
19. Install Skyjacker upper end link mount to OEM frame mount with OEM hardware & supplied 7/16 USS Flat Washer to bushing side of end link using a 18mm socket \ wrench. (Photo # 67) Secure, but **Do Not Completely Tighten**.



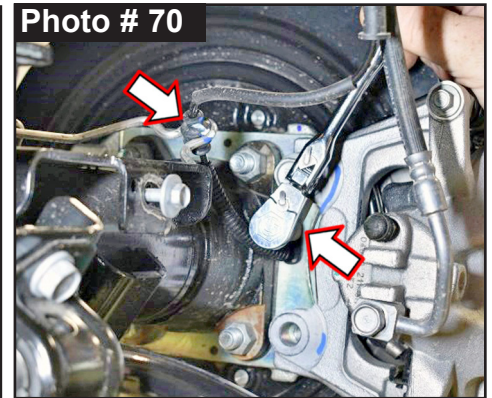
20. Install Skyjacker lower end link mount to OEM sway bar with supplied 12mm x 65mm Bolt with a 7/16" USS Washer from outside of vehicle inward through sway bar. Attach with a 7/16" USS Washer & 12mm Nylon Insert Lock Nut on inside using a 18mm socket \ wrench. (Photo # 68) Secure, but **Do Not Completely Tighten**.

21. **Rubicon Models:** Reconnect OEM rear locker wiring harness to side of center differential housing. **Tech Note:** Pull out on connector to verify that it is securely plugged in properly. Follow OEM locker wiring harness up & reattach OEM wiring harness clamps to OEM emergency brake cable. Continue up OEM locker wiring harness & re-clip two (2) wiring harness clips to driver side inner frame rail above axle.

22. Connect OEM ABS sensor to brake caliper bracket using a 8mm socket \ wrench. (Photo # 69)



23. Connect OEM ABS bracket to axle mount using a 10mm socket \ wrench. (Photo # 70)



24. Connect OEM vent tube to rear axle using pliers.

Final Clearance Check & Torque Steps:

Note: Check Front Center Axle Disconnect (CAD) connection & on **RUBICON** Models: Check Front & Rear locker connections.

1. Start vehicle. Make sure there are no dash lights pertaining to suspension.
2. Jounce vehicle a couple of times. This will help suspension settle to new ride height. Cycle steering lock-to-lock & check all components for proper operation & clearances. Pay special attention to clearance between tires \ wheels & ADX Shocks & Reservoirs, control arms, brake hoses, ABS wiring, etc.

CAUTION: Make Sure ADX Shock Reservoir \ Reservoir Hose Does Not & Will Not Make Contact with Anything Throughout Full Travel Cycle of Suspension. (Tire \ wheel, frame rail, frame brackets, springs, brake lines, exhaust, etc.) For proper clearance, it may be necessary to change location or orientation of reservoir on shock body. Use a hex key socket to loosen clamps to position reservoir cylinder as needed.

3. Front Tighten & Torque Sequence.

Skyjacker track bar at frame using a 21mm wrench. Torque 52 ft-lbs. + 115°

Skyjacker track bar at axle using a 21mm wrench. Torque 52 ft-lbs. + 115°

Front shock absorber upper mount using a 18mm wrench. Torque 81 ft-lbs.

Front shock absorber lower mount using a 18mm wrench. Torque 74 ft-lbs.

ADX Reservoir clamp. Double check position & clearance. Tighten with hex key socket.

Skyjacker sway bar end link upper bolt using a 19mm socket \ wrench. Torque 59 ft-lbs.

Skyjacker sway bar end link lower bolt using a 18mm socket \ wrench. Torque 59 ft-lbs.

Skyjacker front lower links bolts using a 21mm & 24mm socket \ wrench. Torque 125 ft-lbs.

4. Rear Tighten & Torque Sequence.

Rear track bar at rear axle mount. Torque 130 ft-lbs.

Rear shock absorber upper mount using a 18mm socket \ wrench. Torque 81 ft-lbs.

Rear shock absorber lower mount using a 18mm socket \ wrench. Torque 74 ft-lbs.

ADX Reservoir clamp. Double check position & clearance. Tighten with hex key socket.

Skyjacker sway bar end link mounts using a 18mm socket \ wrench. Torque 59 ft-lbs.

Skyjacker rear upper links bolts using a 21mm & 24mm socket \ wrench. Torque 125 ft-lbs.

Rear lower control arm links using a 21mm & 24mm socket \ wrench. Torque 125 ft-lbs.

Final Notes:

- After installation is complete, double check that all nuts & bolts are tight. Refer to following chart for proper torque specifications. (**Note:** Do not re-tighten nuts & bolts where thread lock compound was used.)
- With vehicle placed on ground, cycle steering lock to lock & inspect steering, suspension, brake lines, front & rear drivelines, fuel lines & wiring harnesses for proper operation, tightness & adequate clearance.
- Have headlights readjusted to proper settings.
- Have a qualified alignment center align vehicle to OEM specifications.
- After first 100 miles, check all hardware for proper torque & periodically thereafter.

TORQUE SPECIFICATIONS					
INCH SYSTEM			METRIC SYSTEM		
Bolt Size	Grade 5	Grade 8	Bolt Size	Class 8.8	Class 10.9
5/16	180 in-lbs	240 in-lbs	6MM	60 in-lbs	108 in-lbs
3/8	30 ft-lbs	35 ft-lbs	8MM	216 in-lbs	23 ft-lbs
7/16	45 ft-lbs	60 ft-lbs	10MM	32 ft-lbs	45 ft-lbs
1/2	65 ft-lbs	90 ft-lbs	12MM	55 ft-lbs	75 ft-lbs
9/16	95 ft-lbs	130 ft-lbs	14MM	85 ft-lbs	120 ft-lbs
5/8	135 ft-lbs	175 ft-lbs	16MM	130 ft-lbs	165 ft-lbs
3/4	185 ft-lbs	280 ft-lbs	18MM	170 ft-lbs	240 ft-lbs

**Above Specifications Are Not to Be Used
When Bolt Is Being Installed With a Bushing.**

Seat Belts Save Lives, Please Wear Your Seat Belt.