

Required Tools List:

- **SAE Hex Key & SAE Sockets \ Wrenches**
(7/32" Hex Key Socket & 7/16" & 9/16")
- **Metric Hex Key & Metric Sockets \ Wrenches**
(6mm Hex Key Socket & 8mm, 10mm, 13mm, 15mm, 18mm, 19mm, 21mm, 22mm & 24mm)
- **Diagonal Cutting Pliers**
- **Plastic Fastener Removal Tool**
- **Wheel Chock** • **Jack Stands**
- **Floor Jack** • **Pliers**
- **Paint Marker** • **Measuring Tape**
- **Safety Glasses** • **Torque Wrench**



Before beginning installation, read these instructions & enclosed driver's WARNING NOTICE thoroughly & completely. Also affix WARNING decal in passenger compartment in clear view of all occupants. Please refer to Parts List to insure that all parts & hardware are received prior to disassembly of vehicle. If any parts are found to be missing, contact SKYJACKER® Customer Service at 318-388-0816 to obtain needed items. If you have any questions or reservations about installing this product, contact SKYJACKER® Technical Assistance at 318-388-0816.

Please Record Important Measurement Information Below for Reference.

It Is Very Helpful on Determining an Accurate Achieved Lift Height Measurement.

Make sure you park vehicle on a level concrete or asphalt surface. Many times a vehicle is not level (side-to-side) from factory, but is usually not noticed until a lift kit has been installed which makes difference more visible. Using a measuring tape, measure front & rear (both sides) from ground up to center of fender opening above axle.

| | |
|----------------------------------|-------------------------------------|
| Driver Side Front: _____ / _____ | Passenger Side Front: _____ / _____ |
| BEFORE / AFTER | BEFORE / AFTER |
| Driver Side Rear: _____ / _____ | Passenger Side Rear: _____ / _____ |
| BEFORE / AFTER | BEFORE / AFTER |

Important Notes:

- This Suspension Lift is NOT Designed to Fit Mojave Models.
- After Installation, a Qualified Alignment Facility Is Required to Align Vehicle to OEM Specifications.
- If Larger Tires (10% More Than OEM Diameter) Are Installed, Speedometer Recalibration Will Be Necessary. Contact Your Local JEEP Dealer or an Authorized Skyjacker® Dealer for Details.
- Drag Link Must Be Adjusted to Center Steering Wheel Before Vehicle Is Driven. Failure to Do So Will Cause Computer Errors, Odd Handling Characteristics, & Poor Performance.

Pre-Installation Tips: Install Shock Boots, Bushings & Sleeves.

1. Install supplied Shock Boot over shock rod mount. Attach boot mount onto shock rod mount. Attach boot mount to cylinder body with supplied Boot Cable Tie. Remove excess cable tie with diagonal cutting pliers.
2. Coat supplied Hourglass Bushings with a water resistant grease & press into appropriate shock eye. Coat appropriate supplied Sleeve & press sleeve into shock eye bushing.

Component Box Breakdown:**Part # G250LT**

| Item # | Description | Qty |
|------------|----------------------------|-----|
| JL23FS-DR | DUAL RATE COIL, FRONT | 2 |
| JTG10RMS-S | COIL SPRING SPACER, REAR | 2 |
| H-BOX G251 | HWDR BOX: G250 / G251 KITS | 1 |

Part # G250LTD

| Item # | Description | Qty |
|-------------|----------------------------|-----|
| JL23HDFS-DR | HD DUAL RATE COIL, FRONT | 2 |
| JTG10RMS-S | COIL SPRING SPACER, REAR | 2 |
| H-BOX G251 | HWDR BOX: G250 / G251 KITS | 1 |

Part # G25X

| Item # | Description | Qty |
|---------------|--------------------------|-----|
| A2386 (FRONT) | ADX 2.0 REMOTE RESERVOIR | 2 |
| A2396 (REAR) | ADX 2.0 REMOTE RESERVOIR | 2 |

Component Box Breakdown:**Part # G250PMLT**

| Item # | Description | Qty |
|---------------|----------------------------|-----|
| JL23FS-DR | DUAL RATE COIL, FRONT | 2 |
| JTG10RMS-S | COIL SPRING SPACER, REAR | 2 |
| H-BOX G251 | HWDR BOX: G250 / G251 KITS | 1 |
| M9386 (FRONT) | M95 MONOTUBE SHOCK | 2 |
| M9396 (REAR) | M95 MONOTUBE SHOCK | 2 |

Part # G250PMLTD

| Item # | Description | Qty |
|---------------|----------------------------|-----|
| JL23HDFS-DR | HD DUAL RATE COIL, FRONT | 2 |
| JTG10RMS-S | COIL SPRING SPACER, REAR | 2 |
| H-BOX G251 | HWDR BOX: G250 / G251 KITS | 1 |
| M9386 (FRONT) | M95 MONOTUBE SHOCK | 2 |
| M9396 (REAR) | M95 MONOTUBE SHOCK | 2 |

Part # G250RPMLT

| Item # | Description | Qty |
|---------------|----------------------------|-----|
| JL12HDFS-DR | HD DUAL RATE COIL, FRONT | 2 |
| JTG10RMS-S | COIL SPRING SPACER, REAR | 2 |
| H-BOX G251 | HWDR BOX: G250 / G251 KITS | 1 |
| M9386 (FRONT) | M95 MONOTUBE SHOCK | 2 |
| M9396 (REAR) | M95 MONOTUBE SHOCK | 2 |

Part # G250RPMLTD

| Item # | Description | Qty |
|---------------|----------------------------|-----|
| G24HDFS-DR | HD DUAL RATE COIL, FRONT | 2 |
| JTG10RMS-S | COIL SPRING SPACER, REAR | 2 |
| H-BOX G251 | HWDR BOX: G250 / G251 KITS | 1 |
| M9386 (FRONT) | M95 MONOTUBE SHOCK | 2 |
| M9396 (REAR) | M95 MONOTUBE SHOCK | 2 |

Component Box Breakdown:**Part # G250RLT**

| Item # | Description | Qty |
|-------------|----------------------------|-----|
| JL12HDFS-DR | HD DUAL RATE COIL, FRONT | 2 |
| JTG10RMS-S | COIL SPRING SPACER, REAR | 2 |
| H-BOX G251 | HWDR BOX: G250 / G251 KITS | 1 |

Part # G250RLTD

| Item # | Description | Qty |
|------------|----------------------------|-----|
| G24HDFS-DR | HD DUAL RATE COIL, FRONT | 2 |
| JTG10RMS-S | COIL SPRING SPACER, REAR | 2 |
| H-BOX G251 | HWDR BOX: G250 / G251 KITS | 1 |

Part # G25X

| Item # | Description | Qty |
|---------------|--------------------------|-----|
| A2386 (FRONT) | ADX 2.0 REMOTE RESERVOIR | 2 |
| A2396 (REAR) | ADX 2.0 REMOTE RESERVOIR | 2 |

Component Box Breakdown:**Part # G250PBLT**

| Item # | Description | Qty |
|---------------|----------------------------|-----|
| JL23FS-DR | DUAL RATE COIL, FRONT | 2 |
| JTG10RMS-S | COIL SPRING SPACER, REAR | 2 |
| H-BOX G251 | HWDR BOX: G250 / G251 KITS | 1 |
| B8386 (FRONT) | BLACK MAX SHOCK W/BLK BOOT | 2 |
| B8396 (REAR) | BLACK MAX SHOCK W/BLK BOOT | 2 |

Part # G250PBLTD

| Item # | Description | Qty |
|---------------|----------------------------|-----|
| JL23HDFS-DR | HD DUAL RATE COIL, FRONT | 2 |
| JTG10RMS-S | COIL SPRING SPACER, REAR | 2 |
| H-BOX G251 | HWDR BOX: G250 / G251 KITS | 1 |
| B8386 (FRONT) | BLACK MAX SHOCK W/BLK BOOT | 2 |
| B8396 (REAR) | BLACK MAX SHOCK W/BLK BOOT | 2 |

Part # G250RPBLT

| Item # | Description | Qty |
|---------------|----------------------------|-----|
| JL12HDFS-DR | HD DUAL RATE COIL, FRONT | 2 |
| JTG10RMS-S | COIL SPRING SPACER, REAR | 2 |
| H-BOX G251 | HWDR BOX: G250 / G251 KITS | 1 |
| B8386 (FRONT) | BLACK MAX SHOCK W/BLK BOOT | 2 |
| B8396 (REAR) | BLACK MAX SHOCK W/BLK BOOT | 2 |

Part # G250RPBLTD

| Item # | Description | Qty |
|---------------|----------------------------|-----|
| G24HDFS-DR | HD DUAL RATE COIL, FRONT | 2 |
| JTG10RMS-S | COIL SPRING SPACER, REAR | 2 |
| H-BOX G251 | HWDR BOX: G250 / G251 KITS | 1 |
| B8386 (FRONT) | BLACK MAX SHOCK W/BLK BOOT | 2 |
| B8396 (REAR) | BLACK MAX SHOCK W/BLK BOOT | 2 |

Component Box Breakdown:**Part # G251LT**

| Item # | Description | Qty |
|------------|----------------------------|-----|
| JL23FS-DR | DUAL RATE COIL, FRONT | 2 |
| G200RS-DR | DUAL RATE COIL, REAR 20.0 | 1 |
| G205RS-DR | DUAL RATE COIL, REAR 20.5 | 1 |
| H-BOX G251 | HWDR BOX: G250 / G251 KITS | 1 |

Part # G251LTD

| Item # | Description | Qty |
|-------------|----------------------------|-----|
| JL23HDFS-DR | HD DUAL RATE COIL, FRONT | 2 |
| G200RS-DR | DUAL RATE COIL, REAR 20.0 | 1 |
| G205RS-DR | DUAL RATE COIL, REAR 20.5 | 1 |
| H-BOX G251 | HWDR BOX: G250 / G251 KITS | 1 |

Part # G25X

| Item # | Description | Qty |
|---------------|--------------------------|-----|
| A2386 (FRONT) | ADX 2.0 REMOTE RESERVOIR | 2 |
| A2396 (REAR) | ADX 2.0 REMOTE RESERVOIR | 2 |

Component Box Breakdown:**Part # G251PBLT**

| Item # | Description | Qty |
|---------------|----------------------------|-----|
| JL23FS-DR | DUAL RATE COIL, FRONT | 2 |
| G200RS-DR | DUAL RATE COIL, REAR 20.0 | 1 |
| G205RS-DR | DUAL RATE COIL, REAR 20.5 | 1 |
| H-BOX G251 | HWDR BOX: G250 / G251 KITS | 1 |
| B8386 (FRONT) | BLACK MAX SHOCK W/BLK BOOT | 2 |
| B8396 (REAR) | BLACK MAX SHOCK W/BLK BOOT | 2 |

Part # G251PBLTD

| Item # | Description | Qty |
|---------------|----------------------------|-----|
| JL23HDFS-DR | HD DUAL RATE COIL, FRONT | 2 |
| G200RS-DR | DUAL RATE COIL, REAR 20.0 | 1 |
| G205RS-DR | DUAL RATE COIL, REAR 20.5 | 1 |
| H-BOX G251 | HWDR BOX: G250 / G251 KITS | 1 |
| B8386 (FRONT) | BLACK MAX SHOCK W/BLK BOOT | 2 |
| B8396 (REAR) | BLACK MAX SHOCK W/BLK BOOT | 2 |

Part # G251RPBLT

| Item # | Description | Qty |
|---------------|----------------------------|-----|
| JL12HDFS-DR | HD DUAL RATE COIL, FRONT | 2 |
| G205RS-DR | DUAL RATE COIL, REAR 20.5 | 1 |
| G210RS-DR | DUAL RATE COIL, REAR 21.0 | 1 |
| H-BOX G251 | HWDR BOX: G250 / G251 KITS | 1 |
| B8386 (FRONT) | BLACK MAX SHOCK W/BLK BOOT | 2 |
| B8396 (REAR) | BLACK MAX SHOCK W/BLK BOOT | 2 |

Part # G251RPBLTD

| Item # | Description | Qty |
|---------------|----------------------------|-----|
| G24HDFS-DR | HD DUAL RATE COIL, FRONT | 2 |
| G205RS-DR | DUAL RATE COIL, REAR 20.5 | 1 |
| G210RS-DR | DUAL RATE COIL, REAR 21.0 | 1 |
| H-BOX G251 | HWDR BOX: G250 / G251 KITS | 1 |
| B8386 (FRONT) | BLACK MAX SHOCK W/BLK BOOT | 2 |
| B8396 (REAR) | BLACK MAX SHOCK W/BLK BOOT | 2 |

Component Box Breakdown:**Part # G251RLT**

| Item # | Description | Qty |
|-------------|----------------------------|-----|
| JL12HDFS-DR | HD DUAL RATE COIL, FRONT | 2 |
| G205RS-DR | DUAL RATE COIL, REAR 20.5 | 1 |
| G210RS-DR | DUAL RATE COIL, REAR 21.0 | 1 |
| H-BOX G251 | HWDR BOX: G250 / G251 KITS | 1 |

Part # G251RLTD

| Item # | Description | Qty |
|------------|----------------------------|-----|
| G24HDFS-DR | HD DUAL RATE COIL, FRONT | 2 |
| G205RS-DR | DUAL RATE COIL, REAR 20.5 | 1 |
| G210RS-DR | DUAL RATE COIL, REAR 21.0 | 1 |
| H-BOX G251 | HWDR BOX: G250 / G251 KITS | 1 |

Part # G25X

| Item # | Description | Qty |
|---------------|--------------------------|-----|
| A2386 (FRONT) | ADX 2.0 REMOTE RESERVOIR | 2 |
| A2396 (REAR) | ADX 2.0 REMOTE RESERVOIR | 2 |

Component Box Breakdown:**Part # G251PMLT**

| Item # | Description | Qty |
|---------------|----------------------------|-----|
| JL23FS-DR | DUAL RATE COIL, FRONT | 2 |
| G200RS-DR | DUAL RATE COIL, REAR 20.0 | 1 |
| G205RS-DR | DUAL RATE COIL, REAR 20.5 | 1 |
| H-BOX G251 | HWDR BOX: G250 / G251 KITS | 1 |
| M9386 (FRONT) | M95 MONOTUBE SHOCK | 2 |
| M9396 (REAR) | M95 MONOTUBE SHOCK | 2 |

Part # G251PMLTD

| Item # | Description | Qty |
|---------------|----------------------------|-----|
| JL23HDFS-DR | HD DUAL RATE COIL, FRONT | 2 |
| G200RS-DR | DUAL RATE COIL, REAR 20.0 | 1 |
| G205RS-DR | DUAL RATE COIL, REAR 20.5 | 1 |
| H-BOX G251 | HWDR BOX: G250 / G251 KITS | 1 |
| M9386 (FRONT) | M95 MONOTUBE SHOCK | 2 |
| M9396 (REAR) | M95 MONOTUBE SHOCK | 2 |

Part # G251RPMLT

| Item # | Description | Qty |
|---------------|----------------------------|-----|
| JL12HDFS-DR | HD DUAL RATE COIL, FRONT | 2 |
| G205RS-DR | DUAL RATE COIL, REAR 20.5 | 1 |
| G210RS-DR | DUAL RATE COIL, REAR 21.0 | 1 |
| H-BOX G251 | HWDR BOX: G250 / G251 KITS | 1 |
| M9386 (FRONT) | M95 MONOTUBE SHOCK | 2 |
| M9396 (REAR) | M95 MONOTUBE SHOCK | 2 |

Part # G251RPMLTD

| Item # | Description | Qty |
|---------------|----------------------------|-----|
| G24HDFS-DR | HD DUAL RATE COIL, FRONT | 2 |
| G205RS-DR | DUAL RATE COIL, REAR 20.5 | 1 |
| G210RS-DR | DUAL RATE COIL, REAR 21.0 | 1 |
| H-BOX G251 | HWDR BOX: G250 / G251 KITS | 1 |
| M9386 (FRONT) | M95 MONOTUBE SHOCK | 2 |
| M9396 (REAR) | M95 MONOTUBE SHOCK | 2 |

Hardware Box Breakdown:

Part # H-BOX G251

| Item # | Description | Qty |
|------------|----------------------------|-----|
| SBE4048-L | SWAY BAR END LINK, FRT | 2 |
| SBE506-L | SWAY BAR END LINK, RR | 2 |
| HB-BSS3020 | HDWR BAG: BUMP STOP, FRT | 1 |
| HB-JTGSBER | HDWR BAG: SB END LINK, RR | 1 |
| HB-SBENB24 | HDWR BAG: SB END LINK, FRT | 1 |
| I-G350 | INST SHEET: G350/G351 KITS | 1 |

Hardware Bag Breakdown:

Part # HB-BSS3020-S

| Item # | Description | Qty |
|-----------|------------------------------|-----|
| BSS3020-S | BUMP STOP SPACER, FRT | 2 |
| 38X234BHB | 3/8 X 2-3/4 BUTTON HEAD BOLT | 2 |
| 38SAEW | 3/8 SAE WASHER | 2 |
| 38CTN | 3/8 COARSE THRD N/I LOCK NUT | 2 |

Part # HB-JTGSBER

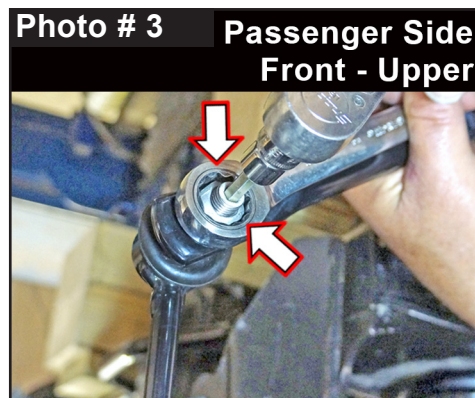
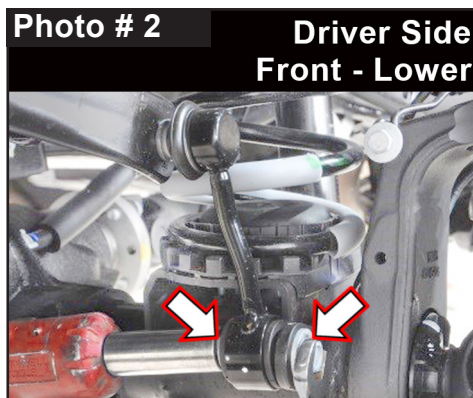
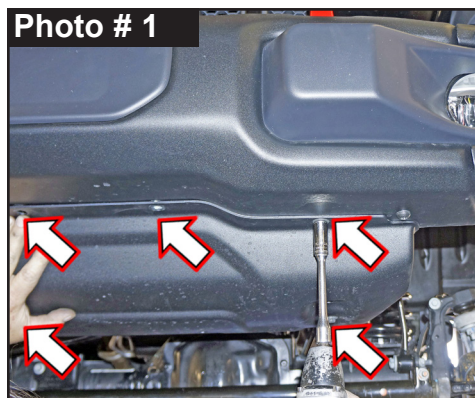
| Item # | Description | Qty |
|-----------|----------------------------|-----|
| HG58125-K | BLACK HOURGLASS BUSHING | 4 |
| 403712 | CRUSH SLEEVE / 1.25 LONG | 4 |
| 12X65MMB | 12MM X 65 METRIC BOLT | 2 |
| 716USSW | 7/16 USS FLAT WASHER | 6 |
| 12MMN | 12MM NYLON INSERT LOCK NUT | 2 |

Part # HB-SBENB24

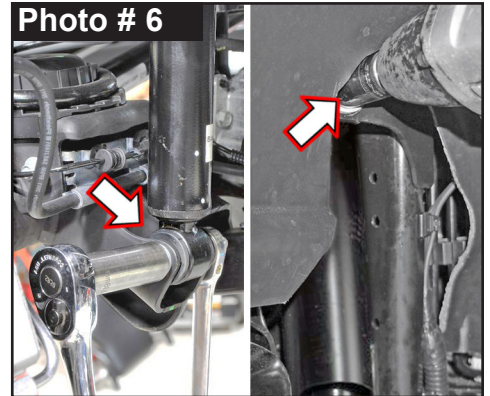
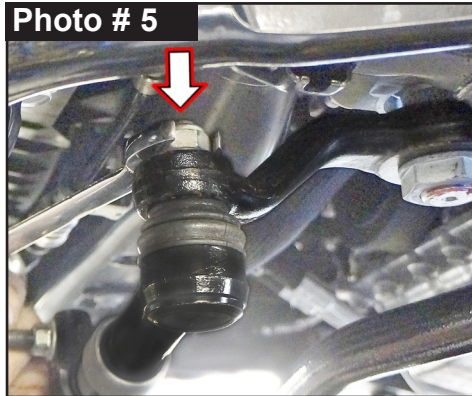
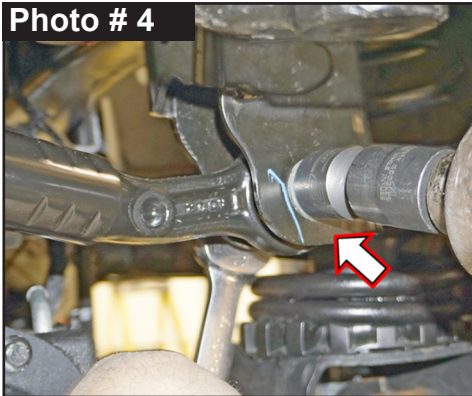
| Item # | Description | Qty |
|-----------|----------------------------|-----|
| 1412BSG-S | SWAY BAR REDUCER BUSHING | 2 |
| 141509 | ES25 SLEEVE, 1.50 LONG | 4 |
| 12X70MMB | 12MM X 70MM METRIC BOLT | 2 |
| 716USSW | 7/16 USS FLAT WASHER | 4 |
| 12MMN | 12MM NYLON INSERT LOCK NUT | 2 |

Front Installation: **Note:** Save all factory components & hardware for reuse, unless noted.

1. With vehicle on flat level ground, set emergency brake & chock rear tires \ wheels.
2. Raise front of vehicle, support frame rails using jack stands at indicated lift points in OEM service manual.
3. Remove front tires \ wheels using a 22mm socket.
4. Remove OEM front skid plate using a 13mm socket \ wrench. (Photo # 1)
5. Remove OEM front sway bar end link lower mount from OEM axle mount using a 18mm socket \ wrench. (Photo # 2) **Note:** Retain OEM hardware.
6. Remove OEM front sway bar end link upper mount from OEM sway bar using a 6mm hex key socket \ wrench & 18mm socket \ wrench. (Photo # 3) **Note:** Retain OEM hardware.



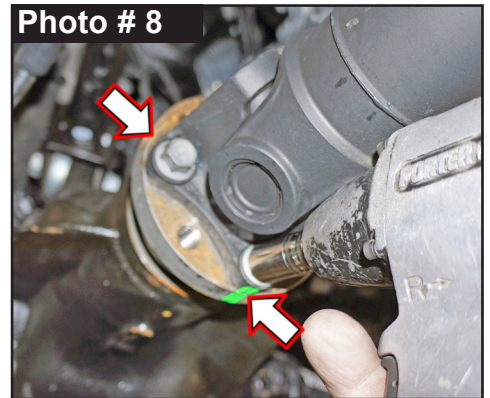
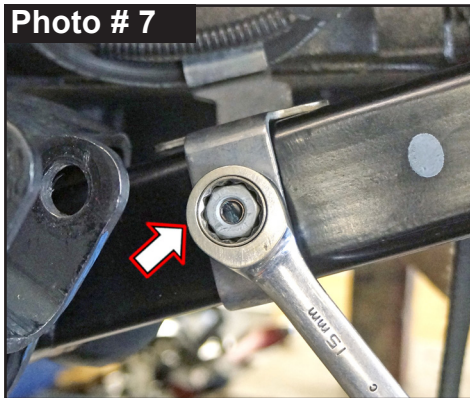
7. Disconnect OEM front track bar from frame mount using a 21mm socket \ wrench. (Photo # 4)
8. Disconnect OEM drag link from OEM pitman arm using a 21mm socket \ wrench. (Photo # 5)
9. Disconnect OEM front shock from upper shock tower mount & lower axle mount using a 18mm socket \ wrench. (Photo # 6)



10. Disconnect OEM front brake line bracket from OEM front lower control arms using a 15mm socket \ wrench. (Photo # 7)

11. For proper driveshaft reassembly realignment, mark position of OEM front differential flange & OEM driveshaft flange. (Photo # 8)

Remove four (4) OEM front driveshaft mounting bolts from OEM differential using a 15mm socket \ wrench.



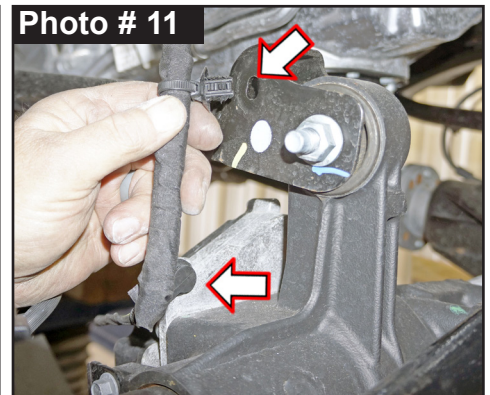
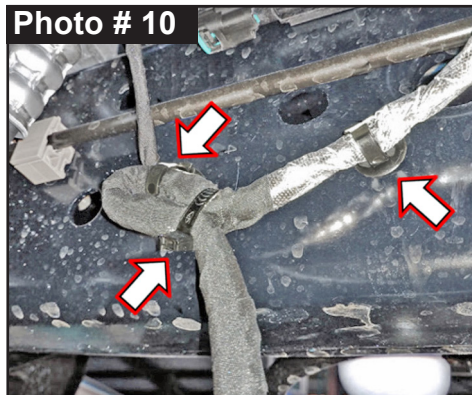
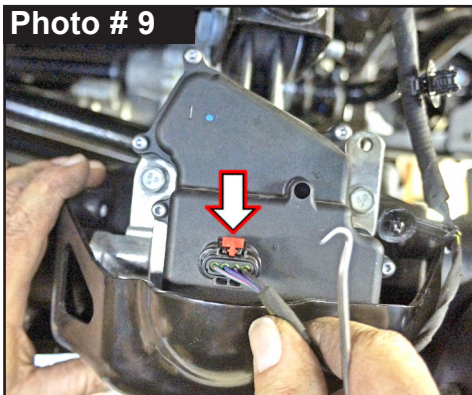
Tech Note: Secure driveshaft safely up & out of way with a bungee or other method.

12. OEM Center Axle Disconnect (CAD) 4WD Actuator, must be disconnected. Disconnect wiring harness from Passenger Side at OEM front upper control arm axle mount. (Photo # 9)

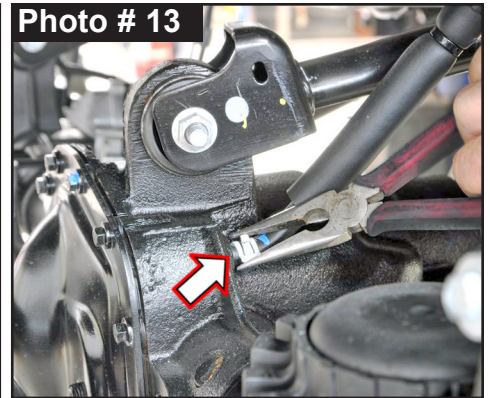
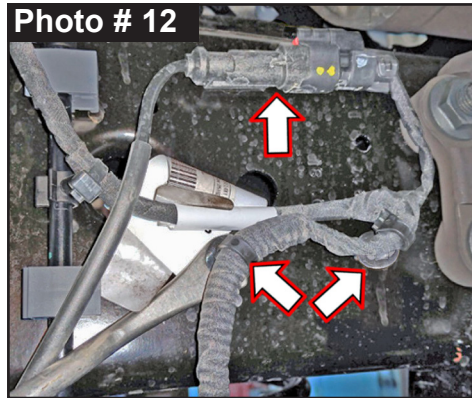
Tech Note: Red safety lock clip must be slid rearward to unlock. Press & hold rearward tang down, grab connector & pull away while from plug-in.

13. OEM Center Axle Disconnect (CAD) 4WD Actuator, on passenger side located at inner frame rail above axle, remove cable tie from wiring harness. Unclip wiring harness clips from frame using a plastic fastener removal tool. (Photo # 10)

OEM Center Axle Disconnect (CAD) 4WD Actuator, on passenger side unclip wiring clips from front axle using a plastic fastener removal tool. (Photo # 11)



14. **Rubicon Models:** Disconnect OEM front locker. On driver side located at 'inner' frame rail above axle, unplug OEM harness plug. (Photo # 12) **Tech Note:** Red safety lock clip must be slid rearward to unlock. Press & hold rearward tang down, grab connector & pull away while from plug-in. Unclip wiring harness clips from frame using a plastic fastener removal tool. (Photo # 12)



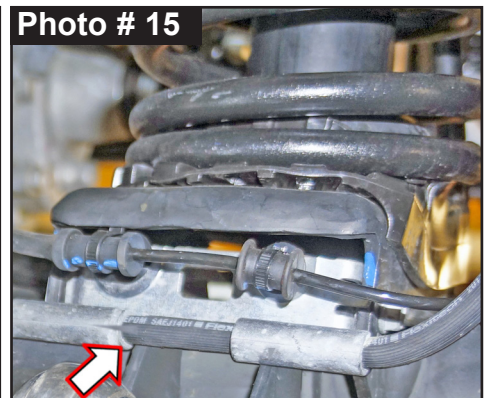
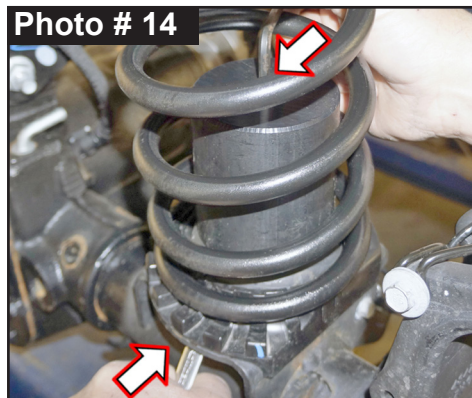
15. Disconnect OEM vent hose clip from front differential using pliers. (Photo # 13)

16. While checking for appropriate slack in ABS lines, brake lines, differential vent hose & etc. Lower front differential.

Remove OEM front coil springs & OEM front coil spring isolators. **Tech Note:** Do Not Remove OEM Bump Stop from OEM upper mount.

17. Skyjacker Front Coil Springs Are Not Side Specific. Place Skyjacker # BSS3020-S 2" Front Bump Stop Spacer inside OEM front coil spring.

Install Skyjacker coil spring with bump stop inside. (Photo # 14) Insert Skyjacker coil spring into upper tower first. **Note:** Make sure OEM coil spring isolator is properly aligned in upper OEM tab mount. Be sure coil is indexed to seat properly, then raise axle enough to hold coil springs in place.



Tech Note: If front axle cannot be lowered enough to allow coil spring to be installed, carefully rotate pinion up to provide more clearance for coil installation.

18. Insert supplied 3/8" x 2-3/4" Button Head Bolt into bump stop. Align bolt into hole of OEM lower coil spring mount pad. Reach under spring mount pad & above axle tube to install supplied 3/8" SAE Washer & 3/8" Nylon Insert Lock Nut onto bolt. (Photo # 14) Tighten bump stop into place using a 7/32" hex key socket \ wrench & 9/16" socket \ wrench. Torque 25 ft.-lbs.

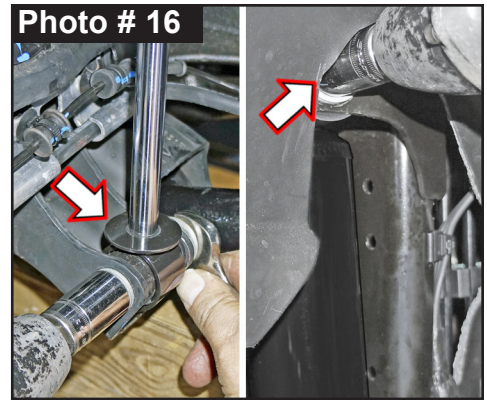
Tech Note: On passenger side, it may be necessary to remove ABS bracket to install bump stop spacer lock nut. At rear of axle above shock mount, remove ABS mounting bracket using a 10mm socket \ wrench. (Photo # 15)

Once bump stop spacer is installed, reinstall ABS bracket.

NOTE: Kit With Black MAX \ M95 Monotube: Proceed to Step 19.

Kit With ADX 2.0 Remote Reservoir: Proceed to Step 20.

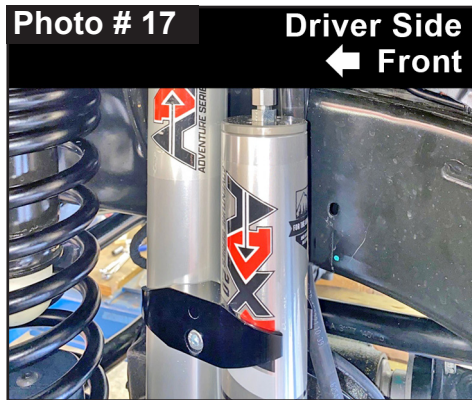
19. Install Skyjacker front shock with OEM hardware at upper shock tower mount using a 18mm socket \wrench. Secure, but **Do Not Completely Tighten** at this time. (Photo # 16)
Tech Note: Black MAX & M95 Monotube are to be mounted with cylinder body up for proper installation of pre-installed upper mount bushings.



Note: Upper shock mount has a OEM fixed nut welded onto frame. Be careful not to dislodge nor over tighten this nut.

Connect Skyjacker shock at lower axle mount with OEM hardware using a 18mm socket \wrench. (Photo # 16) Secure, but **Do Not Completely Tighten** at this time. To set bushings properly for ride height, these will be tightened once vehicle is on ground with full vehicle weight on tires \wheels.

20. **Tech Note:** ADX Remote Reservoir are to be mounted with cylinder body up & remote reservoir toward rear for proper clearance (opposite side of coil spring mount). (Photo # 17 & # 18)



Locate Skyjacker ADX front shock. Loosely assemble two (2) supplied reservoir clamps with two (2) supplied hex head bolts using a hex key socket (one (1) front & one (1) back). Position clamp into place around shock body & reservoir cylinder. Secure, but **Do Not Completely Tighten**.

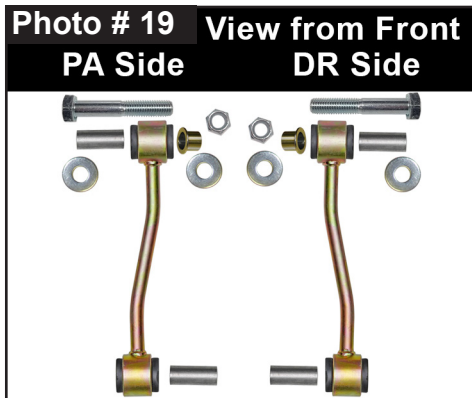
Install Skyjacker ADX front shock. Connect upper shock mount with OEM hardware at upper shock tower mount using a 18mm socket \wrench. **Note:** Upper shock mount has a OEM fixed nut welded onto frame. Be careful not to dislodge nor over tighten this nut.

Connect lower axle mount with OEM hardware using a 18mm socket \wrench. Secure, but **Do Not Completely Tighten** at this time. To set bushings properly for ride height, these will be tightened once vehicle is on ground with full vehicle weight on tires \wheels.

21. **Note:** Skyjacker Sway Bar End Links Are Not Side Specific. Installation Direction \ Position Is Side Specific. (Photo # 19)

Coat supplied # ES25 1.50 Long Steel Sleeves with a water resistant grease.

Press Sleeves into supplied Sway Bar End Link Eyes.



22. **Note:** Skyjacker # 1412BSG-S Sway Bar Reducer Bushing is supplied for **All 2024+ Models**.

Insert Sway Bar Reducer Bushing into OEM sway bar from outside-to-inside. (Photo # 20)

23. Install Skyjacker Sway Bar End Link Assembly upper eye mount with supplied 12mm x 70mm Bolt with a 7/16" USS Washer from inside-to-outside through sway bar.
Attach with a 7/16" USS Washer & 12mm Nylon Insert Lock Nut using a 19mm socket \ wrench. (Photo # 21) Secure, but **Do Not Completely Tighten**.
24. Install Skyjacker Sway Bar End Link Assembly lower eye mount with OEM hardware using a 18mm socket \ wrench. (Photo # 22) Secure, but **Do Not Completely Tighten**.
- Note:** On Driver Side, install lower OEM bolt head with large washer from inside-to-outside through outer bushing side of end link. (Photo # 23) Secure, but **Do Not Completely Tighten**.

Photo # 21 Driver Side Front - Upper

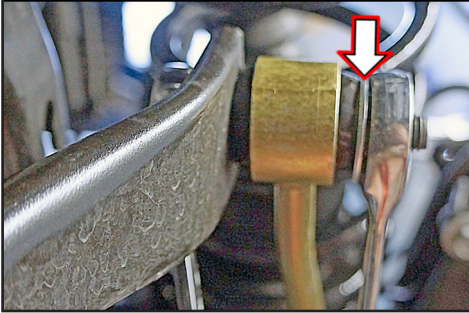


Photo # 22 Passenger Side Front - Lower

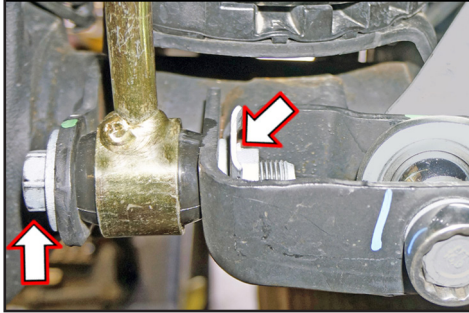
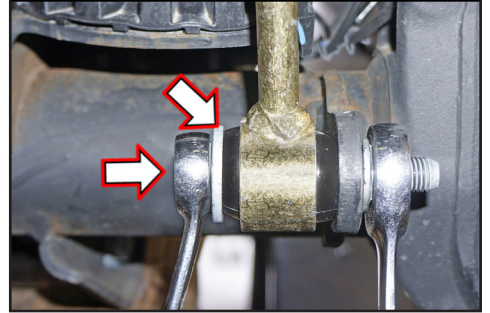
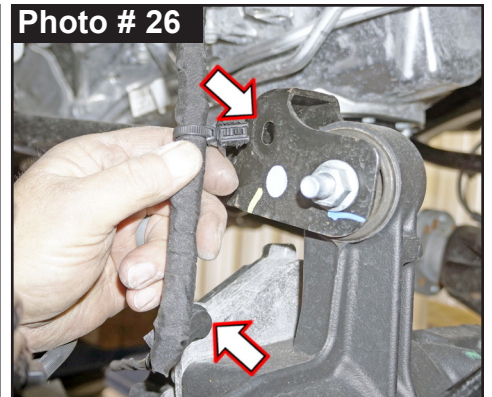
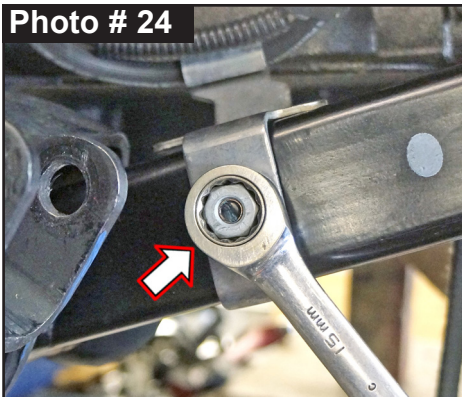


Photo # 23 Driver Side Front - Lower

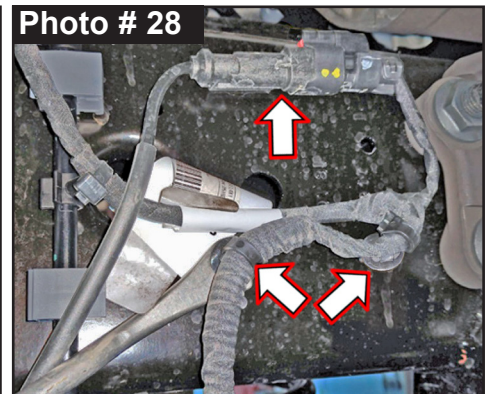
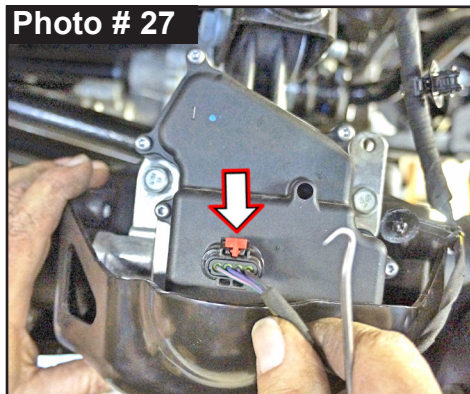


25. Connect OEM front brake line bracket to OEM front lower control arm with OEM hardware using a 15mm socket \ wrench. (Photo # 24)
26. Connect OEM vent hose \ clip to front differential using pliers. (Photo # 25)
27. Connect OEM CAD 4WD Actuator wiring clips to front axle on passenger side. (Photo # 26)



28. Connect OEM CAD 4WD Actuator, on passenger side located at inner frame rail above axle. (Photo # 27) **Tech Note:** Pull out on connector to verify that it is securely plugged in properly.

29. **Rubicon Models:** Connect OEM front locker on driver side. (Photo # 28) **Tech Note:** Pull out on connector to verify that it is securely plugged in properly.



Clip OEM wiring harness clips to frame. (Photo # 28)

30. Align marks on OEM front driveshaft \ flange. Connect driveshaft with OEM hardware using a 15mm socket \ wrench. (Photo # 29) Torque 89 ft-lbs.
31. Connect OEM drag link to OEM pitman arm with OEM hardware using a 21mm socket \ wrench. (Photo # 30) **Note:** Drag Link Must Be Adjusted to Center Steering Wheel Before Vehicle Is Driven. Failure to Do So Will Cause Computer Errors, Odd Handling Characteristics, & Poor Performance. Torque 75 ft-lbs.
32. Install OEM front skid plate with OEM hardware using a 13mm socket \ wrench. (Photo # 31)

Photo # 29

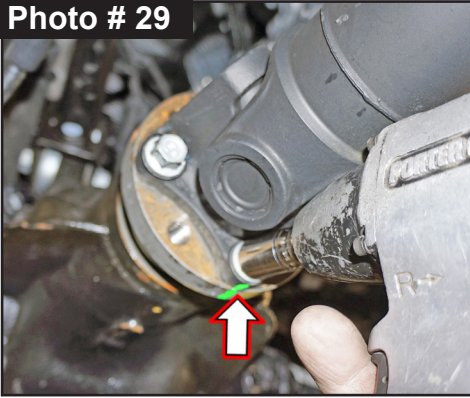


Photo # 30

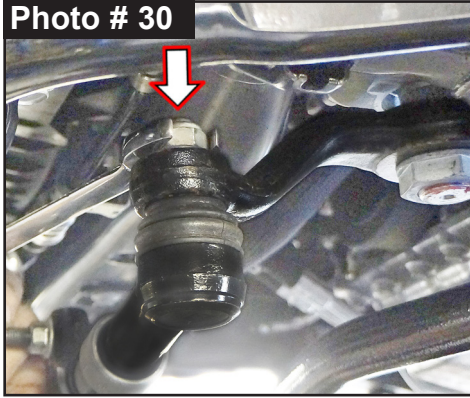
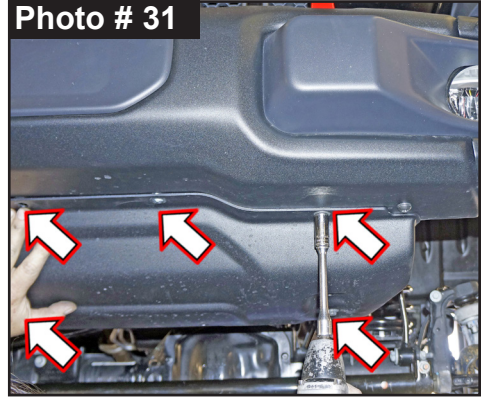
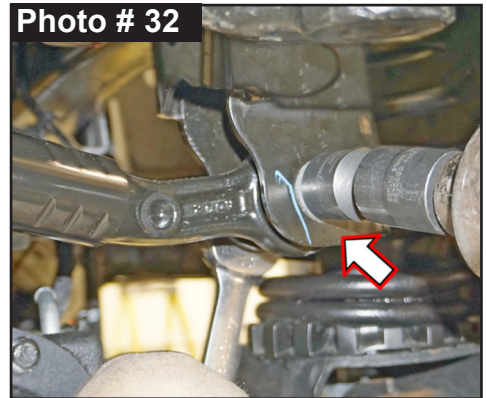


Photo # 31



33. Install front tires \ wheels using a 22mm socket. Lower vehicle to ground. Torque lugs to OEM service manual specifications.
34. Connect OEM front track bar to frame mount with OEM hardware using a 21mm socket \ wrench. (Photo # 32)
Tech Note: It may be necessary to turn steering wheel to align track rod end with mount.

Photo # 32



Rear Installation: Note: Save all factory components & hardware for reuse, unless noted.

1. Chock front tires \ wheels. Raise rear of vehicle & support frame rails using jack stands at indicated lift points in OEM service manual.
2. Remove rear tires \ wheels using a 22mm socket.

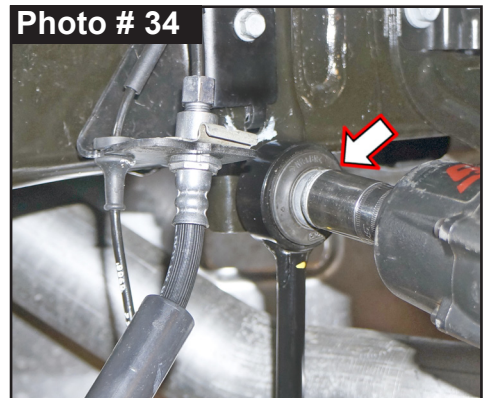
3. Remove OEM rear sway bar end link. Disconnect lower link at sway bar using a 6mm hex key socket \ wrench & 18mm socket \ wrench. (Photo # 33)

Disconnect upper link at outside frame using a 21mm socket \ wrench. (Photo # 34)

Photo # 33



Photo # 34



4. Disconnect OEM rear track bar from rear axle mount using a 21mm socket \ wrench. (Photo # 35) **Tech Note:** It may be necessary to raise \ lower axle to take pressure off track bar bolt. Retain OEM hardware.
5. Disconnect OEM rear shock at upper & lower hardware using a 21mm socket \ wrench. (Photo # 36 & # 37) Remove OEM rear shocks & retain hardware.

Photo # 35

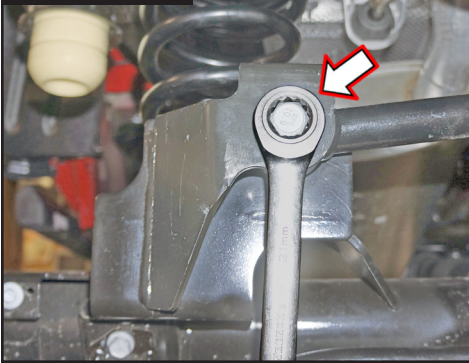


Photo # 36

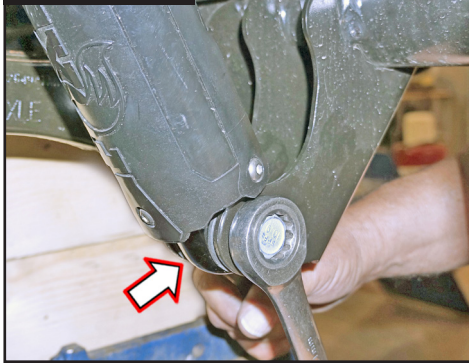


Photo # 37



6. **Rubicon Models:** OEM rear locker must be disconnected so wiring connectors are not over-extended. On rear axle, unplug locker wiring harness from side of center differential housing. **Tech Note:** Safety lock clip must be slid rearward to unlock. Press & hold rearward tang down, grab connector & pull away while from plug-in.

Follow OEM locker wiring harness up & unclip harness clamps from emergency brake cable. Continue up OEM locker wiring harness & unclip two (2) wiring harness clips from driver side inner frame rail above axle using a plastic fastener removal tool.

7. Disconnect OEM ABS bracket from axle mount using a 10mm socket \ wrench. (Photo # 38)
Disconnect OEM ABS sensor from brake caliper bracket using a 8mm socket \ wrench. (Photo # 39)
8. Loosen, but **Do Not Remove** rear OEM upper & lower control arm links. (Photo # 40) Loosen at OEM frame & axle mounts using a 21mm & 24mm socket \ wrench.

Photo # 38

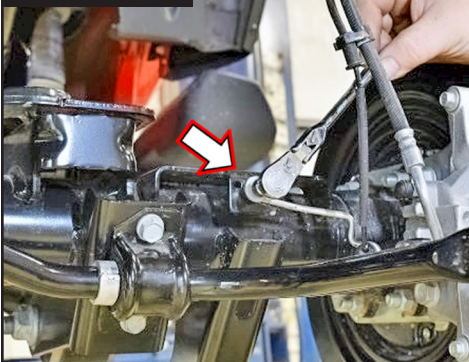


Photo # 39

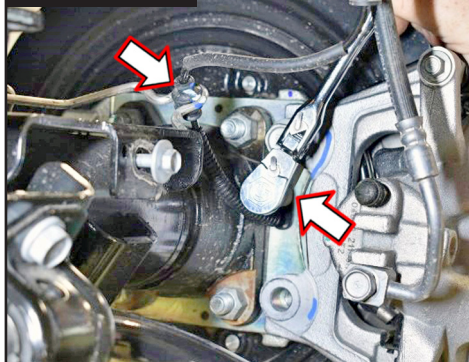
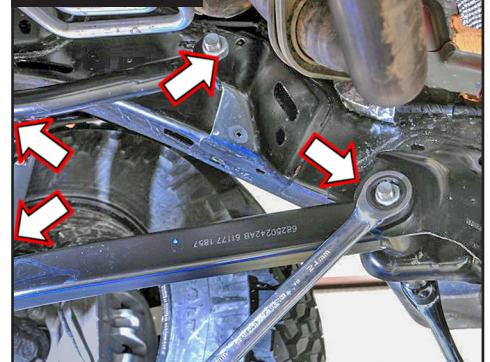


Photo # 40



9. While checking for appropriate slack in ABS lines, brake lines, differential vent hose & etc.
RUBICON Models: Watch rear locker connections.

Lower rear axle & remove OEM rear coil springs. **Tech Note:** OEM upper coil spring isolators are Side Specific to properly align with coil \ frame mounts.

- 10 Place upper coil spring isolator in upper coil bucket. Mark orientation on isolator & upper coil bucket. (Photo # 41)

Mark top of isolators: DR & PA also. (Photo # 42)

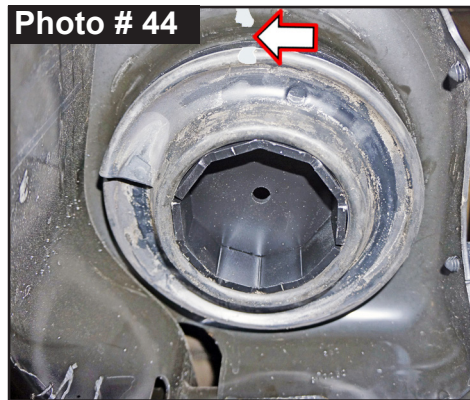
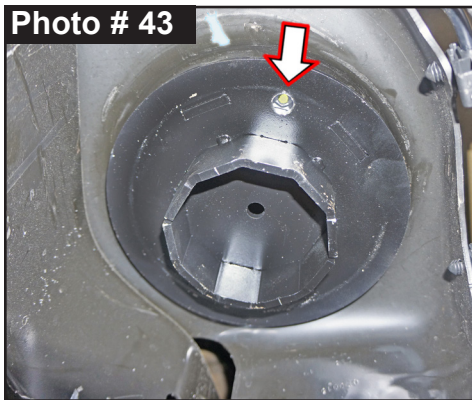


**NOTE: Kit With Replacement Rear Coil Springs: Proceed to Steps 11-12.
Kit With Rear Coil Spring Spacers: Proceed to Steps 13.**

11. Skyjacker # JTG20RMS-S Rear Coil Spring Spacers Are Not Side Specific.

To help hold Skyjacker # JTG20RMS-S Rear Coil Spring Spacer in place during installation, supplied \ attached 1/4" x 3/4" Course Thread Bolt installs from topside of OEM rear coil spring mount down into spacer. **Tech Note:** Install bolt from outside frame rail using a 7/16" wrench. (Photo # 43)

12. Install appropriate OEM rear coil spring isolator. (Photo # 44) **Note:** Be sure that tab of each OEM upper coil spring isolator is aligned with previous marks & tab hole of OEM upper coil spring mount. (Photo # 41 & # 42) Install OEM rear coil springs. (Photo # 45) **Proceed to Step 14.**



13. Skyjacker Rear Coil Springs Are Two (2) Different Lengths \ Heights. Taller rear coil spring is to be installed on OEM fuel tank side of vehicle. Shorter rear coil spring is to be installed on opposite side of vehicle.

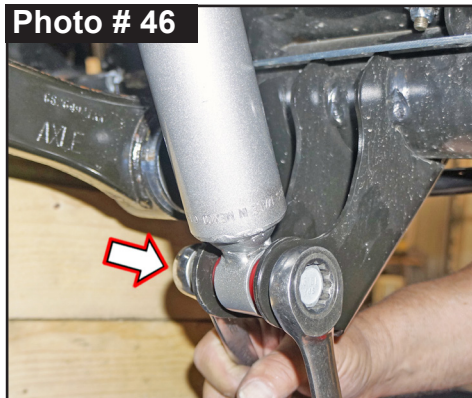
Install appropriate OEM rear coil spring isolator & Skyjacker rear coil spring. (Photo # 45)

Note: Be sure that tab of each OEM upper coil spring isolator is aligned with previous marks & tab hole of OEM upper coil spring mount. (Photo # 41 & # 42)

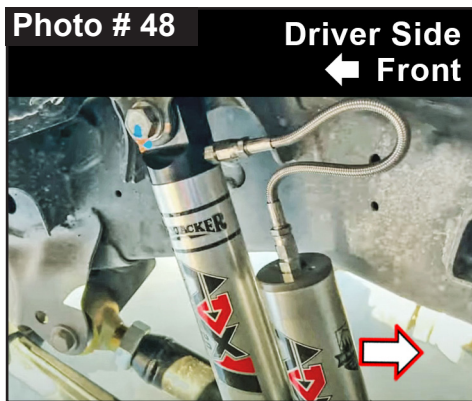
Raise rear axle in order to load Skyjacker rear coil springs. **Proceed to Next Steps.**

**NOTE: Kit With Black MAX \ M95 Monotube: Proceed to Step 14.
Kit With ADX 2.0 Remote Reservoir: Proceed to Step 15.**

14. Install Skyjacker rear shock with OEM hardware using a 18mm socket \ wrench. (Photo # 46 & # 47) Secure, but **Do Not Completely Tighten.** **Tech Note:** Black MAX & M95 Monotube are to be mounted with cylinder body down & rod end up for proper installation of pre-installed upper mount bushings. **Proceed to Step 16.**



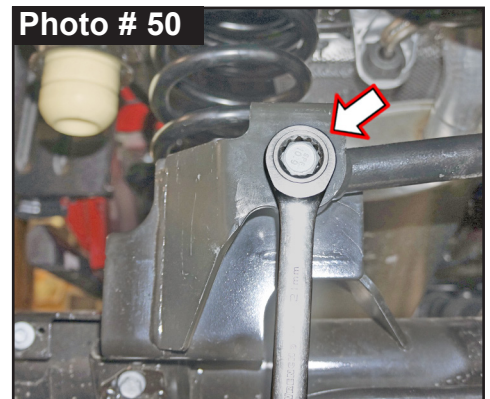
15. **Tech Note:** ADX Remote Reservoir are to be mounted with cylinder body up & remote reservoir toward rear for proper clearance. (Photo # 48 & # 49)



Loosely assemble two (2) supplied reservoir clamps with two (2) supplied hex head bolts using a hex key socket. Position clamp into place around shock & reservoir cylinder. Secure, but **Do Not Completely Tighten.**

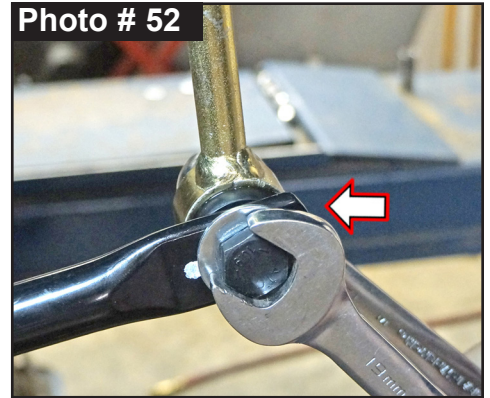
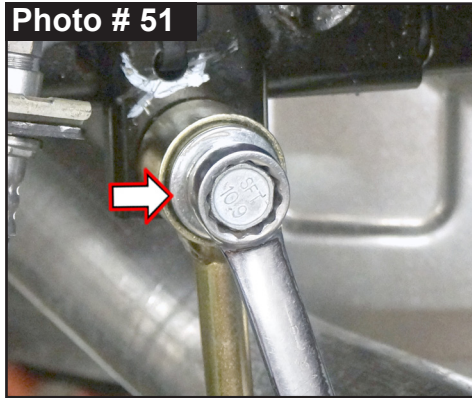
Install Skyjacker ADX rear shock with OEM hardware using a 18mm socket \ wrench. Secure, but **Do Not Completely Tighten.** **Proceed to Step 16.**

16. Connect OEM rear track bar to rear axle mount with OEM bolt & tab nut using a 21mm socket \ wrench. (Photo # 50) **Tech Note:** It may be necessary to raise \ lower axle to align track bar bolt. Secure, but **Do Not Completely Tighten.**



17. Skyjacker # SBE506-L Rear Sway Bar End Links Are Not Side Specific.
Coat supplied # 403712 1.25" Long Steel Sleeves with a water resistant grease.
Press Sleeves into supplied Sway Bar End Link Eyes.

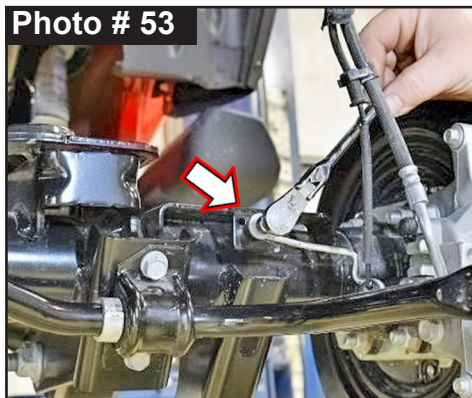
18. Install Skyjacker upper end link mount to OEM frame mount with OEM hardware & supplied 7/16 USS Flat Washer to bushing side of end link using a 18mm socket \ wrench. (Photo # 51) Secure, but **Do Not Completely Tighten**.



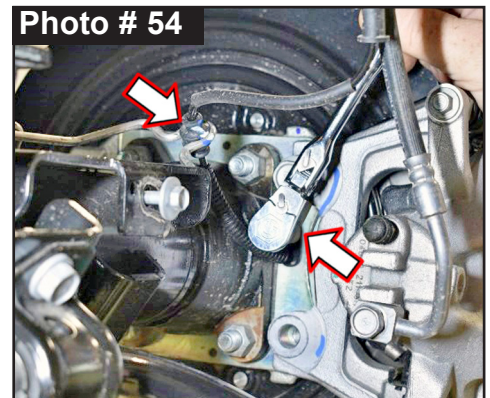
Install Skyjacker lower end link mount to OEM sway bar with supplied 12mm x 65mm Bolt with a 7/16" USS Washer from outside of vehicle inward through sway bar. Attach with a 7/16" USS Washer & 12mm Nylon Insert Lock Nut on inside using a 18mm socket \ wrench. (Photo # 52) Secure, but **Do Not Completely Tighten**.

19. **Rubicon Models:** Reconnect OEM rear locker wiring harness to side of center differential housing. **Tech Note:** Pull out on connector to verify that it is securely plugged in properly. Follow OEM locker wiring harness up & reattach OEM wiring harness clamps to OEM emergency brake cable. Continue up OEM locker wiring harness & re-clip two (2) wiring harness clips to driver side inner frame rail above axle.

20. Connect OEM ABS sensor to brake caliper bracket using a 8mm socket \ wrench. (Photo # 53)



21. Connect OEM ABS bracket to axle mount using a 10mm socket \ wrench. (Photo # 54)



22. Connect OEM vent tube to rear axle using pliers.

23. Install rear tires \ wheels using a 22mm socket. Lower vehicle to ground. Torque lugs to OEM service manual specifications.

Final Clearance Check & Torque Steps:

Note: Check Front Center Axle Disconnect (CAD) connection & on **RUBICON** Models: Check Front & Rear locker connections.

1. Start vehicle. Make sure there are no dash lights pertaining to suspension.
2. Jounce vehicle a couple of times. This will help suspension settle to new ride height. Cycle steering lock-to-lock & check all components for proper operation & clearances. Pay special attention to clearance between tires \ wheels & ADX Shocks & Reservoirs, control arms, brake hoses, ABS wiring, etc.

CAUTION: Make Sure ADX Shock Reservoir \ Reservoir Hose Does Not & Will Not Make Contact with Anything Throughout Full Travel Cycle of Suspension. (Tire \ wheel, frame rail, frame brackets, springs, brake lines, exhaust, etc.) For proper clearance, it may be necessary to change location or orientation of reservoir on shock body. Use a hex key socket to loosen clamps to position reservoir cylinder as needed.

3. Front Tighten & Torque Sequence.

Front track bar at frame using a 21mm wrench. Torque 52 ft-lbs. + 115°

Front shock absorber upper mount using a 18mm wrench. Torque 81 ft-lbs.

Front shock absorber lower mount using a 18mm wrench. Torque 74 ft-lbs.

ADX Reservoir clamp. Double check position & clearance. Tighten with hex key socket.

Skyjacker sway bar end link upper bolt using a 19mm socket \ wrench. Torque 59 ft-lbs.

Skyjacker sway bar end link lower bolt using a 18mm socket \ wrench. Torque 59 ft-lbs.

4. Rear Tighten & Torque Sequence.

Rear OEM track bar to OEM bracket \ axle mount. Torque 130 ft-lbs.

Rear shock absorber upper mount using a 18mm socket \ wrench. Torque 81 ft-lbs.

Rear shock absorber lower mount using a 18mm socket \ wrench. Torque 74 ft-lbs.

ADX Reservoir clamp. Double check position & clearance. Tighten with hex key socket.

Skyjacker sway bar end link mounts using a 18mm socket \ wrench. Torque 59 ft-lbs.

Rear upper & lower control arm links using a 21mm & 24mm socket \ wrench. Torque 125 ft-lbs.

Final Notes:

- After installation is complete, double check that all nuts & bolts are tight. Refer to following chart for proper torque specifications. (**Note:** Do not re-tighten nuts & bolts where thread lock compound was used.)
- With vehicle placed on ground, cycle steering lock to lock & inspect steering, suspension, brake lines, front & rear drivelines, fuel lines & wiring harnesses for proper operation, tightness & adequate clearance.
- Have headlights readjusted to proper settings.
- Have a qualified alignment center align vehicle to OEM specifications.
- After first 100 miles, check all hardware for proper torque & periodically thereafter.

| TORQUE SPECIFICATIONS | | | | | |
|-----------------------|------------|------------|---------------|------------|------------|
| INCH SYSTEM | | | METRIC SYSTEM | | |
| Bolt Size | Grade 5 | Grade 8 | Bolt Size | Class 8.8 | Class 10.9 |
| 5/16 | 180 in-lbs | 240 in-lbs | 6MM | 60 in-lbs | 108 in-lbs |
| 3/8 | 30 ft-lbs | 35 ft-lbs | 8MM | 216 in-lbs | 23 ft-lbs |
| 7/16 | 45 ft-lbs | 60 ft-lbs | 10MM | 32 ft-lbs | 45 ft-lbs |
| 1/2 | 65 ft-lbs | 90 ft-lbs | 12MM | 55 ft-lbs | 75 ft-lbs |
| 9/16 | 95 ft-lbs | 130 ft-lbs | 14MM | 85 ft-lbs | 120 ft-lbs |
| 5/8 | 135 ft-lbs | 175 ft-lbs | 16MM | 130 ft-lbs | 165 ft-lbs |
| 3/4 | 185 ft-lbs | 280 ft-lbs | 18MM | 170 ft-lbs | 240 ft-lbs |

**Above Specifications Are Not to Be Used
When Bolt Is Being Installed With a Bushing.**

Seat Belts Save Lives, Please Wear Your Seat Belt.