



TORSION BAR DROP KIT

Thank you for choosing Rough Country for your suspension needs.

Rough Country recommends a certified technician installs this system. In addition to these instructions, professional knowledge of disassemble/reassembly procedures as well as post installation checks must be known. Attempts to install this system without this knowledge and expertise may jeopardize the integrity and/or operating safety of the vehicle.

Please read all the instructions before beginning the installation. Check the kit hardware against the parts list. Be sure you have all the needed parts and understand where they go. Also please review the tools needed list and make sure you have needed tools.

PRODUCT USE INFORMATION

As a general rule, the taller a vehicle is the easier it will roll. We strongly recommend, because of rollover possibility, that seat belts and shoulder harnesses should be worn at all times. Avoid situations where a side rollover may occur.

Braking performance and capabilities are decreased when significantly larger/heavier tires and wheels are used. Take this into consideration while driving. Also, speedometer recalibration is necessary when larger tires are installed.

Do not add, alter, or fabricate any factory or after-market parts which increase vehicle height over the intended height of the Rough Country product purchased. Mixing component brands, lifts, and/or combining body lift with suspension lifts voids all warranties. Rough Country makes no claims regarding lifting devices and excludes any and all implied claims. We will not be responsible for any product that is altered.

NOTICE TO DEALER AND VEHICLE OWNER

Any vehicle equipped with any Rough country product must have the "Warning to Driver" decal installed on the sun visor or dash. The decal is to act as a constant reminder for whoever is operating the vehicle of its unique handling characteristics. **INSTALLING DEALER**—It is your responsibility to install the warning decal and to forward these installation instructions on too the vehicle owner for review and to be kept in the vehicle for its service life.

Kit Contents:

2-Torsion bar drop brackets

1-Poly Bag:

8-1/2" x 1 1/4" bolts

8-1/2" lock nuts

16-1/2" washers

2-Sleeves

4-Bushings

Tools Needed:

Torsion bar tool

21mm wrench

3/4" wrench

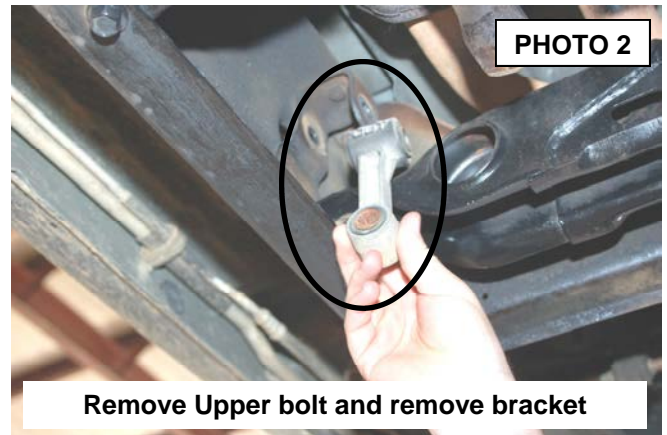
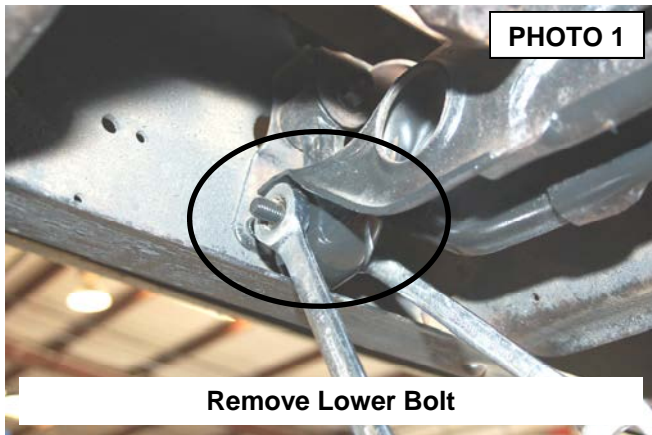
Torque Specs

Size	Grade 5	Grade 8
1/2"	65 ft/lbs	90 ft/lbs
9/16"	95 ft/lbs	130 ft/lbs
5/8"	135 ft/lbs	175 ft/lbs
3/4"	185 ft/lbs	280 ft/lbs



INSTALLATION INSTRUCTIONS

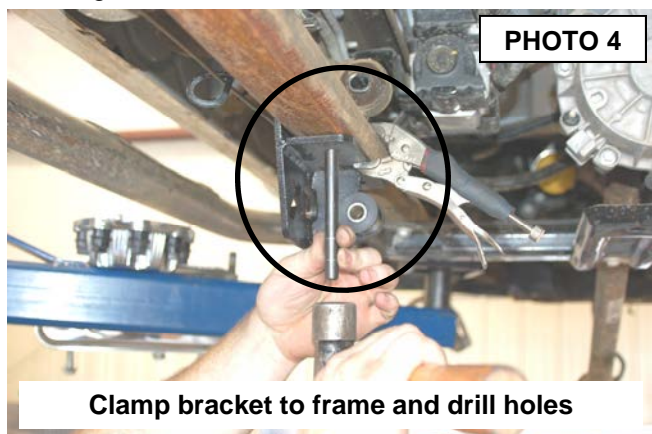
1. Mark the torsion bar and torsion bar key for reinstall reference.
2. Unload the torsion bars using a torsion bar tool.
3. Remove the cross-member bolts as shown in **PHOTO 1** using a 21mm wrench. Remove the upper bolts using a 21mm socket / wrench and remove the factory bracket. **See PHOTO 2**. Access to the top bolt is gained through the side of the frame rail. Save lower factory mount hardware for reuse.



4. Remove the factory cross-member from the vehicle. **See PHOTO 3**. **Mark passenger and driver side adjusters.**
5. Install the supplied bushings and sleeves in the new torsion bar cross-member drop brackets.
2. Locate new torsion bar drop bracket over the factory rivets on the side of the frame rail as shown in **PHOTO 4** and clamp in place. Using the bracket as a guide, drill holes using a 17/32" drill bit.
3. Using supplied 1/2" x 1 1/4" bolts with a 3/4" wrench secure the bracket to the frame rail, but do not fully tighten to allow the installation of the factory torsion bar cross-member.
4. Install the factory torsion bar cross-member to the drop brackets using the factory hardware with a 21mm wrench. **See PHOTO 5**. **Note:** Be sure to slide the torsion bars back into the cross-member as the cross-member is installed.



5. Install stock keys in torsion bar cross-member on torsion bars. Tighten all cross-member hardware
5. Using the torsion bar tool load the torsion bars and install the threaded factory adjuster block / adjuster bolts.



6. Adjust the torsion bars as needed for the kit

Thank you for purchasing a Rough Country Suspension System.

**ROUGH
COUNTRY**
SUSPENSION SYSTEMS