



FORD 2015-22 F-150 Raptor Style Step Kit

Thank you for choosing Rough Country for all your vehicle needs.

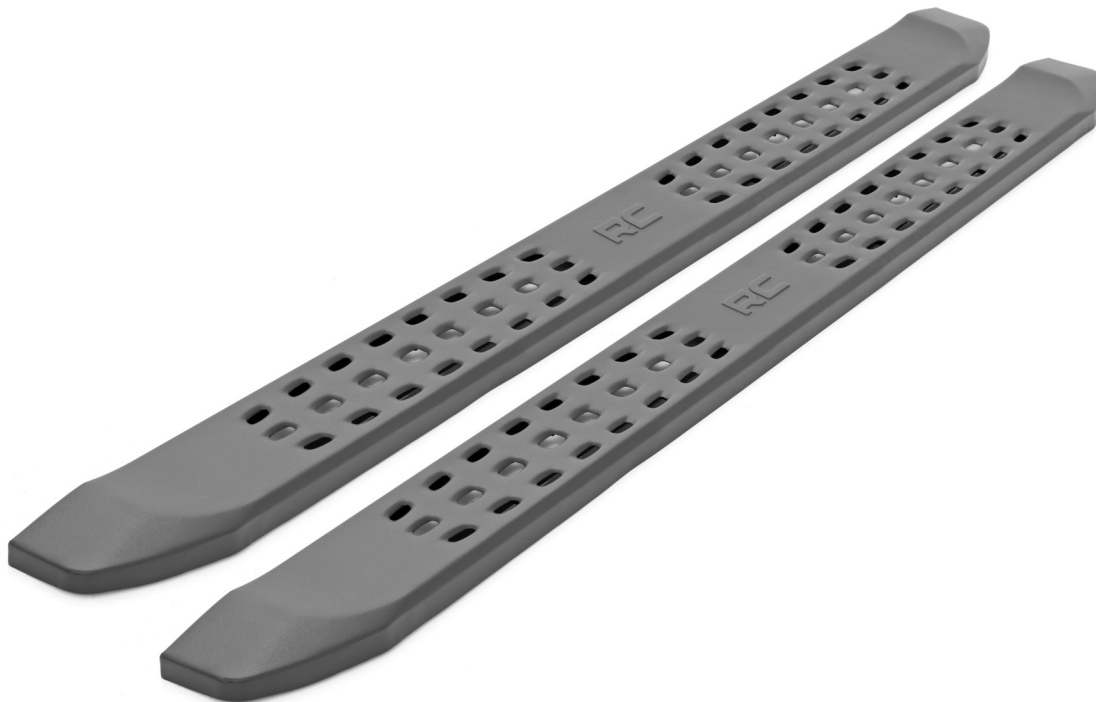
Please read instructions before beginning installation. Check the kit hardware against the kit contents shown below. Be sure you have all needed parts and know where they go.

If question exist, please call us @1-800-222-7023. We will be happy to answer any questions concerning this product. Check all fasteners for proper torque. Check to ensure for adequate clearance between all components. Periodically check all hardware for tightness.

KIT CONTENTS:
 Driver Side Step Rail x1
 Pass Side Step Rail x1
 Step Brackets x6

TOOLS NEEDED:
 10mm Wrench or Socket
 13mm Wrench or Socket

HARDWARE INCLUDED:
 Double Bolt Plate x6
 6mm Flat Washers x12
 6mm Lock washers x12
 6mm Nuts x12
 8mm Flat Washers x18
 8mm Nylock Nuts x18
 8mm Plastic Retainer x18



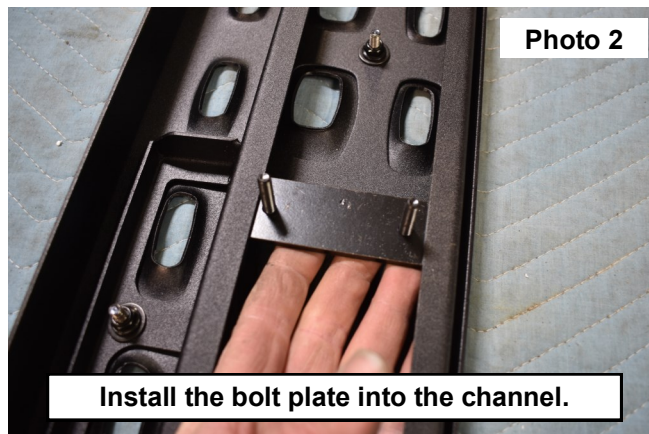
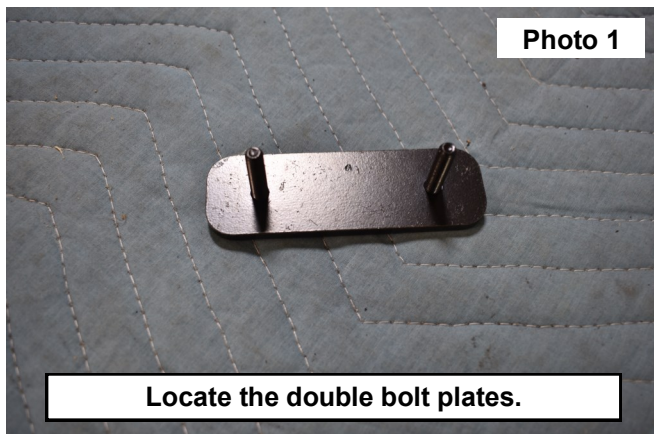
Torque Specs:

Size	Grade 5	Grade 8	Size	Class 8.8	Class 10.9
5/16"	15 ft/lbs	20ft/lbs	6MM	5ft/lbs	9ft/lbs
3/8"	30 ft/lbs	35ft/lbs	8MM	18ft/lbs	23ft/lbs
7/16"	45 ft/lbs	60ft/lbs	10MM	32ft/lbs	45ft/lbs
1/2"	65 ft/lbs	90ft/lbs	12MM	55ft/lbs	75ft/lbs
9/16"	95 ft/lbs	130ft/lbs	14MM	85ft/lbs	120ft/lbs
5/8"	135ft/lbs	175ft/lbs	16MM	130ft/lbs	165ft/lbs
3/4"	185ft/lbs	280ft/lbs	18MM	170ft/lbs	240ft/lbs

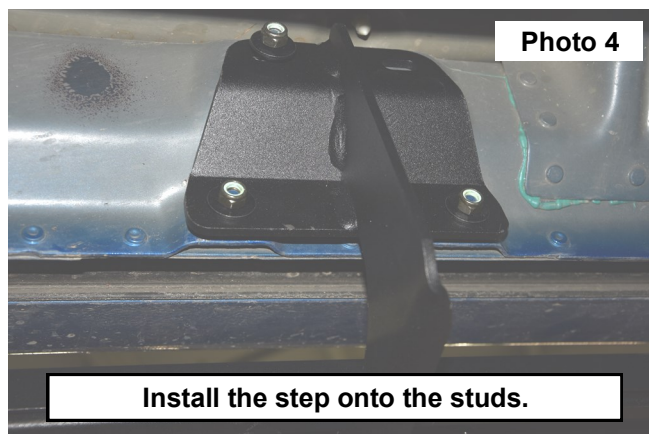
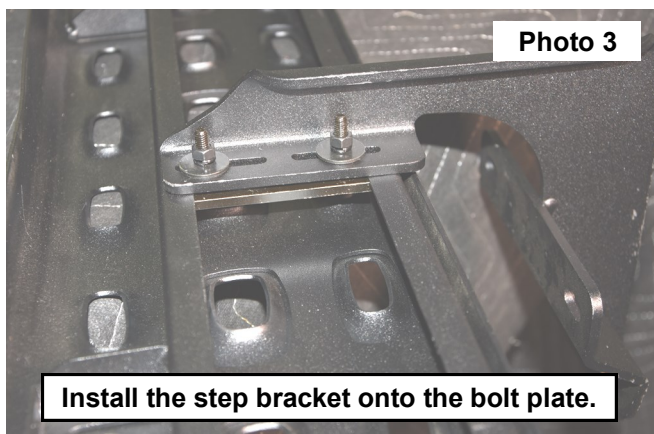


INSTALLATION INSTRUCTONS

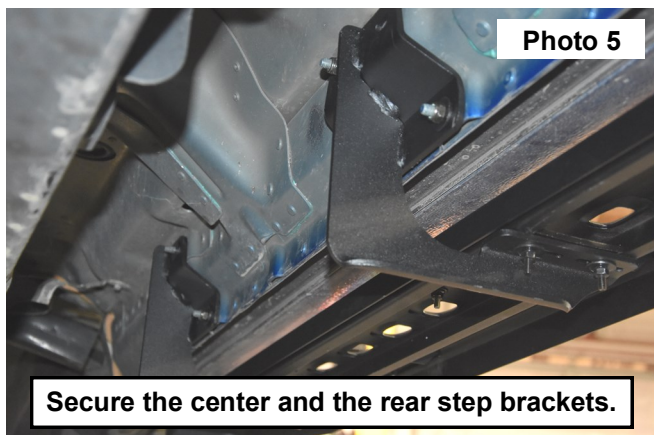
1. Locate the (3) double bolt plates. **See Photo 1.**
2. Place (1) of the bolt plates into the channel of the step. **See Photo 2.**



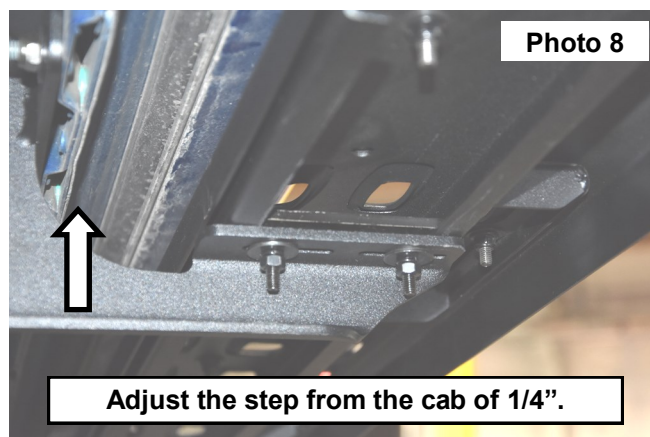
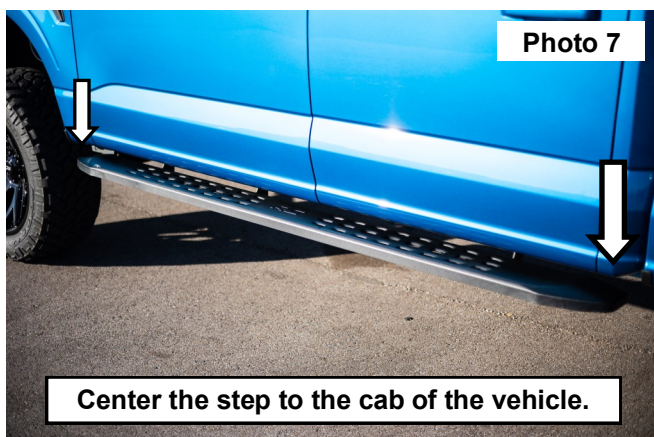
3. Place the bolt plate studs into the slots of the step mounting bracket. Secure the step bracket and bolt plate using (2) of the supplied 6mm flat washers (2) 6mm lock washers and (2) 6mm nuts for each of the (3) mounting brackets. **See Photo 3.**
4. Repeat the step bracket mounting prosses for the center and rear step mounting brackets using the remaining 6mm hardware.
5. Install the step onto the mounting studs and secure the brackets to the vehicle using (3) 8mm flat washers and (3) 8mm nylock nuts. **See Photo 4.**



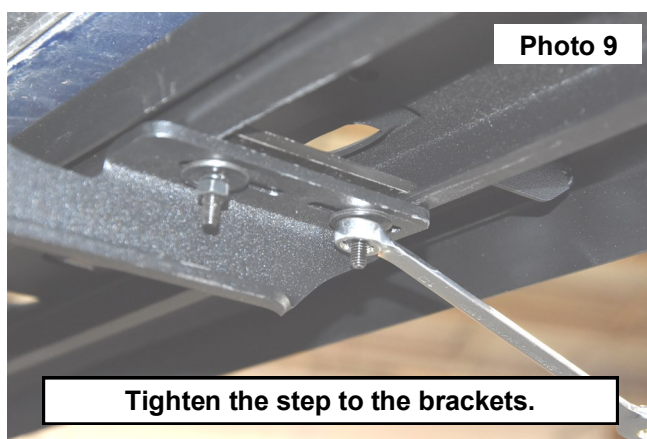
6. Secure the center an the rear step brackets to the vehicle using (3) 8mm flat washers and (3) 8mm nylock nuts for each bracket. **See Photo 5.**
7. Tighten the (3) step brackets to the body of the vehicle using a 13mm socket or wrench. **See Photo 6.**



8. Center the step plate into the desired position. **See Photo 7.**
9. Adjust the inside of the step plate within a 1/4" away from the cab of the vehicle. **See Photo 8.**



10. Tighten the hardware using a 10mm wrench on each of the (3) mounting brackets. **See Photo 9.**





By purchasing any item sold by Rough Country, LLC, the buyer expressly warrants that he/she is in compliance with all applicable, State, and Local laws and regulations regarding the purchase, ownership, and use of the item. It shall be the buyers responsibility to comply with all Federal, State and Local laws governing the sales of any items listed, illustrated or sold. The buyer expressly agrees to indemnify and hold harmless Rough Country, LLC for all claims resulting directly or indirectly from the purchase, ownership, or use of the items.

