

Universal Cooler Slide

Thank you for choosing Rough Country for all your vehicle needs.

Please read instructions before beginning installation. Check the kit hardware against the kit contents shown below. Be sure you have all needed parts and know where they go.

If question exist, please call us @1-800-222-7023. We will be happy to answer any questions concerning this product.

Check all fasteners for proper torque. Check to ensure for adequate clearance between all components.

Periodically check all hardware for tightness.

Cooler not included.

KIT CONTENTS:

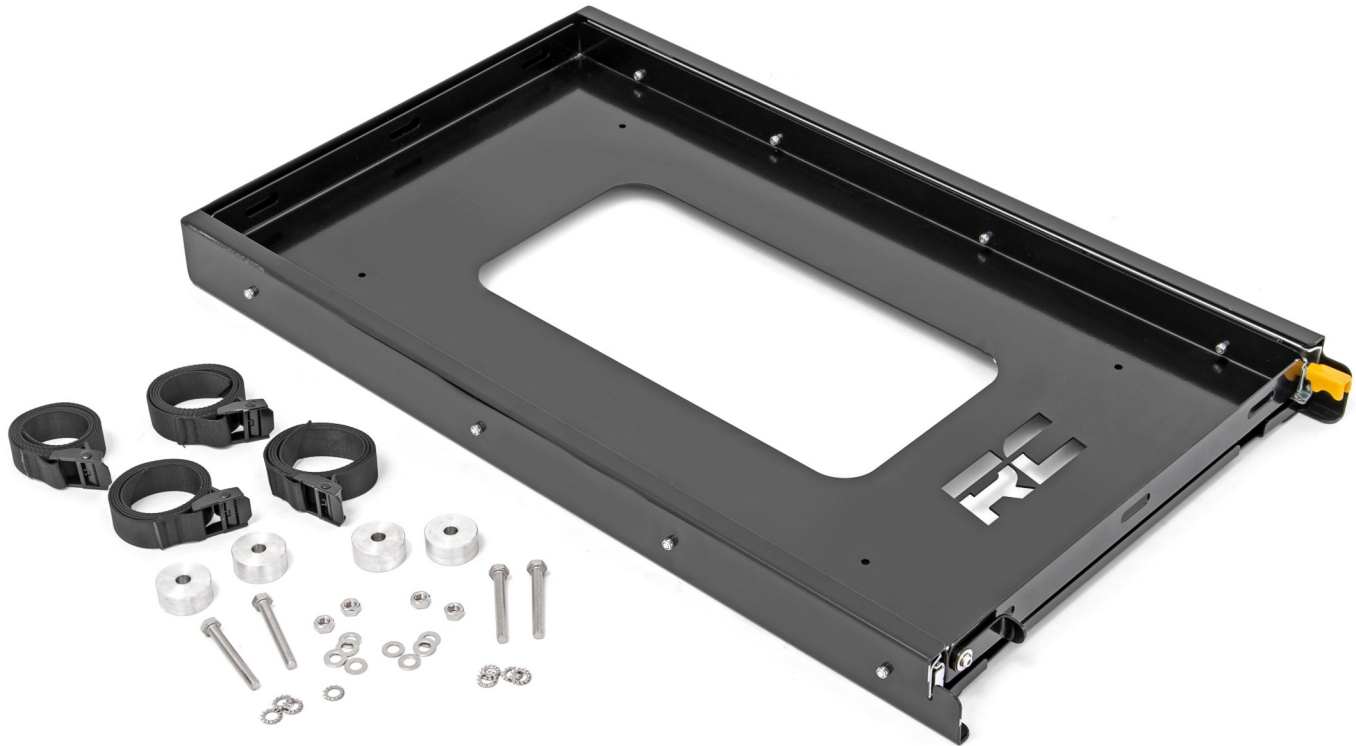
- Cooler Slide Tray x1
- Cooler Tie Down Straps x4
- Aluminum Spacers x4

TOOLS NEEDED:

- 1/4" Drill Bit
- 7/16" Drill Bit
- 9/16" Drill Bit
- Drill Motor
- 13mm Wrench or Socket

HARDWARE INCLUDED:

- 8mm x 65mm Hex Head Bolt x4
- 8mm Lock Washers x4
- 8mm Flat Washers x8
- 8mm Nuts x4
- 8mm Nutserts x4



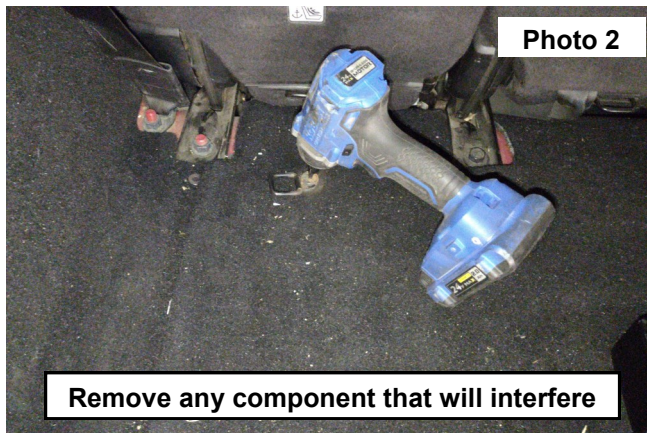
Torque Specs:

| Size | Grade 5 | Grade 8 | Size | Class 8.8 | Class 10.9 |
|-------|-----------|-----------|------|-----------|------------|
| 5/16" | 15 ft/lbs | 20ft/lbs | 6MM | 5ft/lbs | 9ft/lbs |
| 3/8" | 30 ft/lbs | 35ft/lbs | 8MM | 18ft/lbs | 23ft/lbs |
| 7/16" | 45 ft/lbs | 60ft/lbs | 10MM | 32ft/lbs | 45ft/lbs |
| 1/2" | 65 ft/lbs | 90ft/lbs | 12MM | 55ft/lbs | 75ft/lbs |
| 9/16" | 95 ft/lbs | 130ft/lbs | 14MM | 85ft/lbs | 120ft/lbs |
| 5/8" | 135ft/lbs | 175ft/lbs | 16MM | 130ft/lbs | 165ft/lbs |
| 3/4" | 185ft/lbs | 280ft/lbs | 18MM | 170ft/lbs | 240ft/lbs |

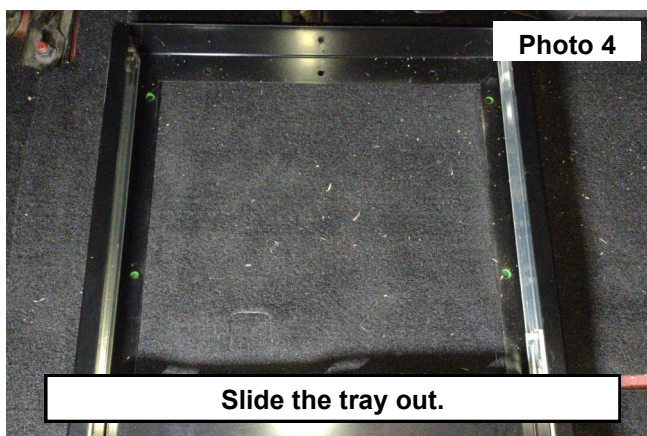
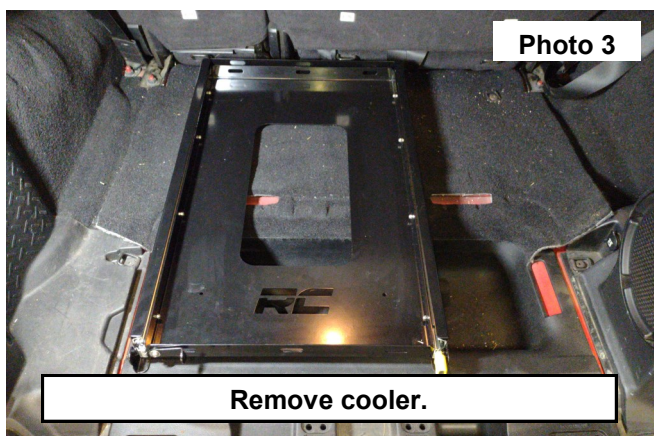


INSTALLATION INSTRUCTIONS

1. Place the cooler and cooler slide together and seat into the desired location. **See Photo 1.**
2. Installations shown in the rear of a Jeep but can be installed in other locations. If applicable, remove any component that will interfere with the installation of the cooler slide. **See Photo 2.**



3. Leaving the cooler slide in the desired location of the vehicle. **See Photo 3.**
4. Flip the lever on the left side and press the latch on the right to release. Then slide the tray out to expose the mounting holes. Use a light colored paint marker and mark the location of the slider base onto the mounting surface. **See Photo 4.**



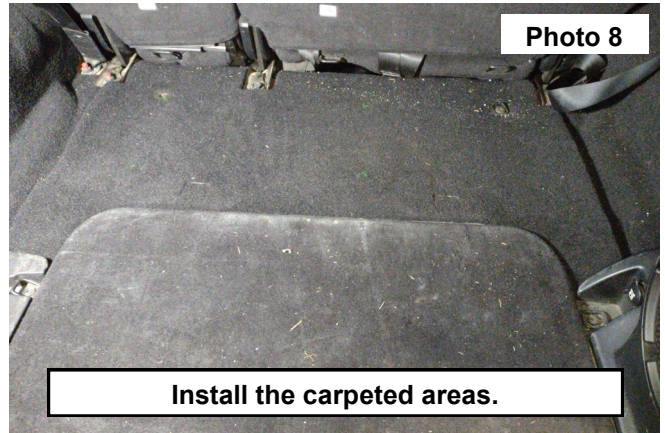
5. The cooler slide can be mounted by using either the 8mm nutserts or 8mm nuts / lock washers. Determine the best mounting option and proceed with installation. The instructions below show installing the slide with the supplied 8mm nut serts.
6. Use a 1/4" Drill bit to drill through the mounting location and mark the location the floor of the vehicle. **See Photo 5.**
7. Remove the carpet from the vehicle if needed. Using a 9/16" drill bit, drill the (4) holes for the threaded inserts to be installed into. **See Photo 6.**



8. Install the (4) threaded inserts into the floor using the proper tool. **See Photo 7.**
9. Clean any metal shavings from the drilled area.
10. Place the carpeted areas back into the factory location. **See Photo 8.**

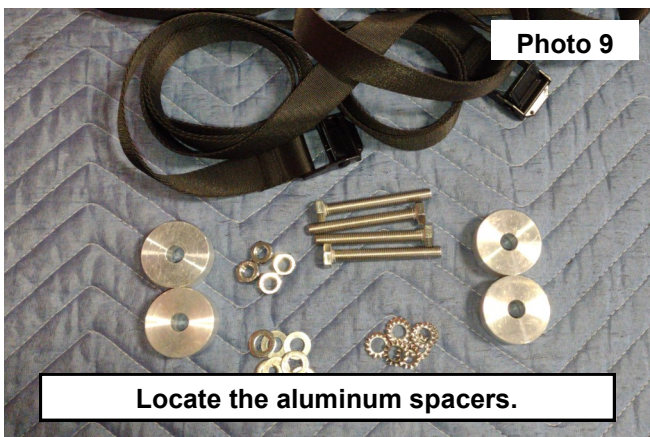


Install the threaded inserts.

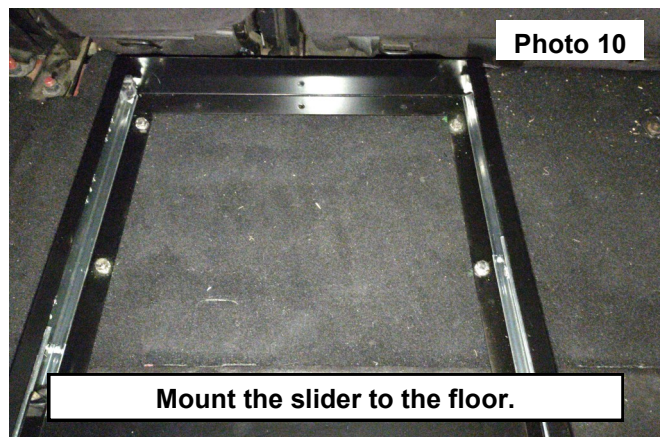


Install the carpeted areas.

11. In some applications it will be necessary to use the supplied aluminum spacers supplied in the kit to allow the slide to function as intended without interference. If needed locate the (4) supplied aluminum spacers and 8mm Hardware. **See Photo 9.**
12. Align the slider base and the (4) spacers onto the mounting location in the carpet. Then secure using (4) 8mm Bolts, washers and lock washers into the threaded inserts or the supplied 8mm nuts/lock washers. Tighten using a 13mm socket. **See Photo 10.**

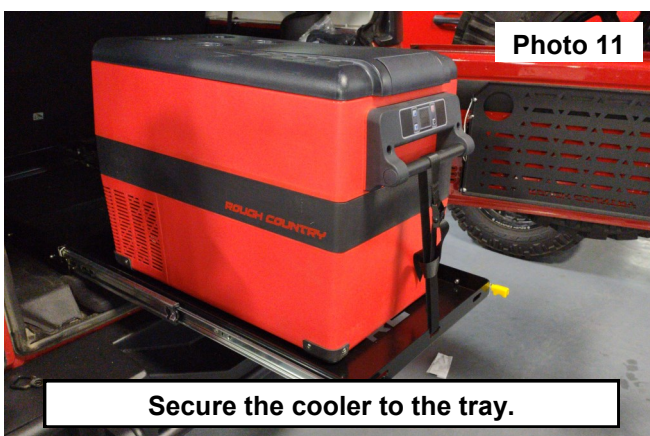


Locate the aluminum spacers.

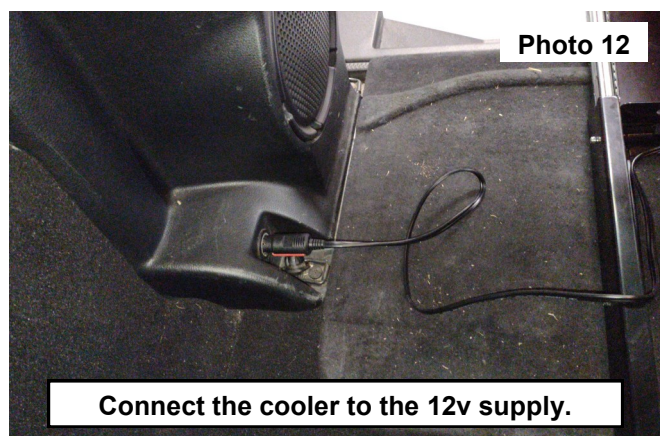


Mount the slider to the floor.

13. With the slider tray in the open position, place the cooler onto the tray and secure the cooler using (2) of the supplied straps on each side of the cooler. **See Photo 11.**
14. Connect the cooler to the 12v power supply. **See Photo 12.**

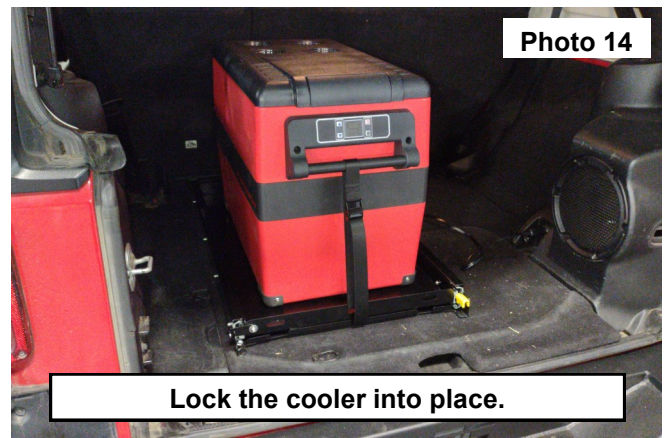


Secure the cooler to the tray.



Connect the cooler to the 12v supply.

15. After the 12v connections have been made. Make sure the cooler is in working condition, side the cooler into the vehicle and lock into place checking for interference with the cooler and cooler side. Take caution to protect the cord on the cooler to keep out of harms way. **See Photos 13 and 14.**



By purchasing any item sold by Rough Country, LLC, the buyer expressly warrants that he/she is in compliance with all applicable, State, and Local laws and regulations regarding the purchase, ownership, and use of the item. It shall be the buyers responsibility to comply with all Federal, State and Local laws governing the sales of any items listed, illustrated or sold. The buyer expressly agrees to indemnify and hold harmless Rough Country, LLC for all claims resulting directly or indirectly from the purchase, ownership, or use of the items.

