

## POLARIS 2013-20 Ranger Rear Windshield Panel

Thank you for choosing Rough Country for all your vehicle needs.

Please read instructions before beginning installation. Check the kit hardware against the kit contents shown below. Be sure you have all needed parts and know where they go.

If question exist, please call us @1-800-222-7023. We will be happy to answer any questions concerning this product.

Check all fasteners for proper torque. Check to ensure for adequate clearance between all components.

Periodically check all hardware for tightness.

**KIT CONTENTS:**  
Rear Windshield x1  
Edging x1  
Stiffening Bar x1  
Top Brackets x3  
Lower Brackets x4

**TOOLS NEEDED:**  
5/32 Allen Wrench  
7/16 Wrench or Socket  
Razor Knife

**HARDWARE INCLUDED:**  
1/4-20 x 5/8 Button Head Bolts x8  
1/4-20 x 1.5 Button Head Bolts x3  
1/4-20 Nylock Nuts x11  
1/4" Flat Washers x3  
Fluted Knob x3



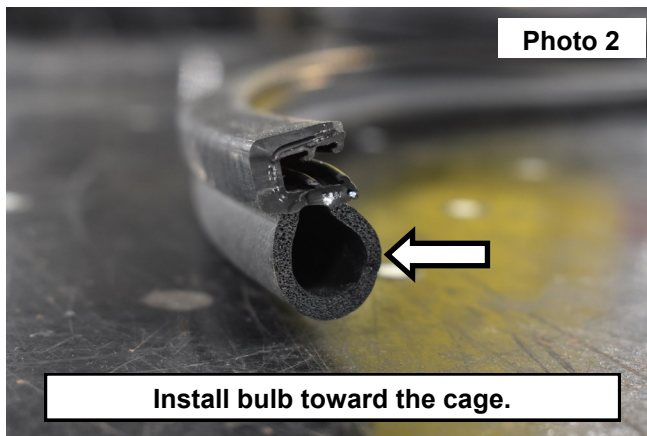
### Torque Specs:

Size	Grade 5	Grade 8	Size	Class 8.8	Class 10.9
5/16"	15 ft/lbs	20ft/lbs	6MM	5ft/lbs	9ft/lbs
3/8"	30 ft/lbs	35ft/lbs	8MM	18ft/lbs	23ft/lbs
7/16"	45 ft/lbs	60ft/lbs	10MM	32ft/lbs	45ft/lbs
1/2"	65 ft/lbs	90ft/lbs	12MM	55ft/lbs	75ft/lbs
9/16"	95 ft/lbs	130ft/lbs	14MM	85ft/lbs	120ft/lbs
5/8"	135ft/lbs	175ft/lbs	16MM	130ft/lbs	165ft/lbs
3/4"	185ft/lbs	280ft/lbs	18MM	170ft/lbs	240ft/lbs

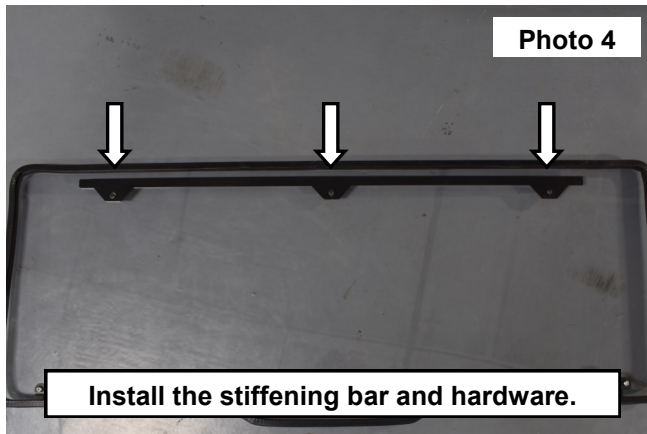
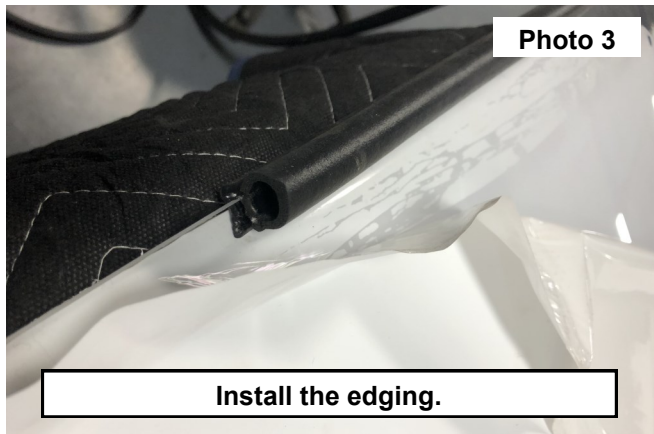


## INSTALLATION INSTRUCTIONS

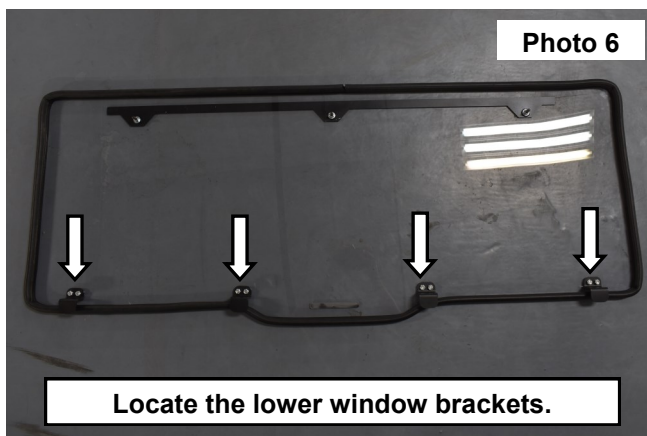
1. Remove the protective covering from the windshield. **See Photo 1.**
2. Locate the edging. Install the bulb side of the edging toward the rear of the cage on the UTV. **See Photo 2.**



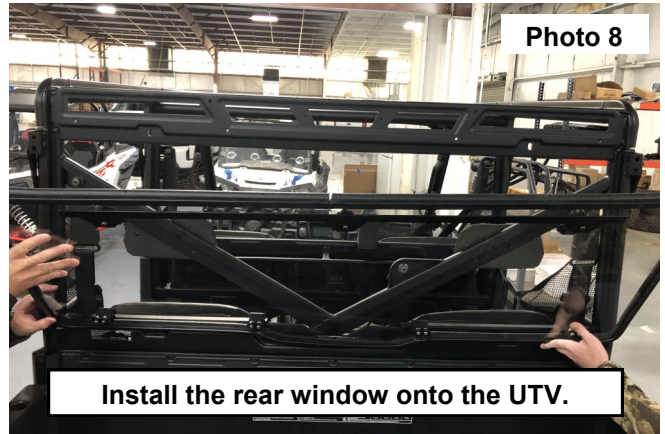
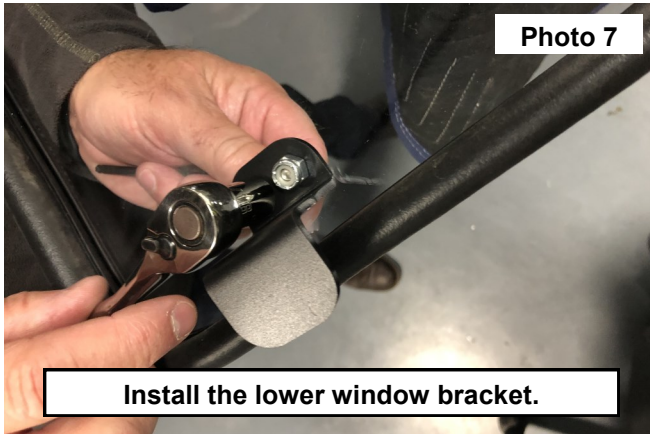
3. Install the edging onto the back window insuring the bulb of the edging is to the inside of the window. Trim any excess edging after installation using a razor knife. The Rough Country logo will be the outer side of the window. **See Photo 3.**
4. Place the stiffening bar onto the outer side of the window. Then install (3) of the supplied 1/4-20 x 1.5" Button Head Bolts into the stiffening bar and the window. **See Photo 4.**



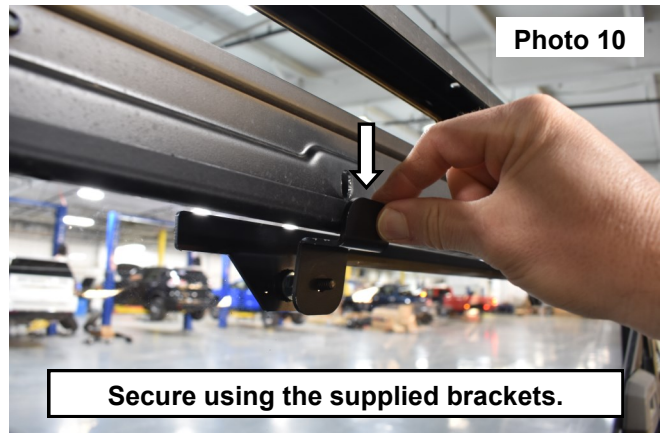
5. Secure the (3) 1/4-20 bolts installed into the stiffening bar and the window using (3) of the supplied 1/4-20 nylock nuts and (3) 1/4" Flat washers. Tighten hardware using a 5/32 Allen Wrench and a 7/16" Wrench or socket. **See Photo 5.**
6. Locate the (4) lower window brackets. Install the (4) lower window brackets using (8) of the supplied 1/4-20 x 5/8" Button Head bolts, and (8) of the supplied 1/4-20 Nylock Nuts. **See Photo 6.**



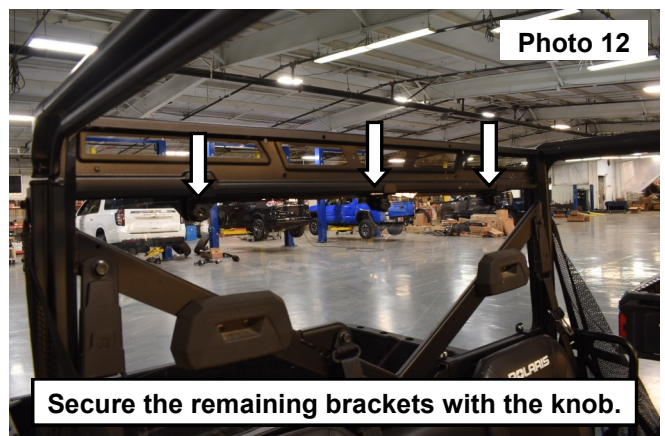
7. Install the lower window bracket using (2) of the supplied 1/4-20 x 5/8" Button Head bolts, and (2) of the supplied 1/4-20 Nylock Nuts. **See Photo 7.** Tighten hardware using a 5/32 Allen Wrench and a 7/16" Wrench or socket.
8. Place the window into the back of the UTV. **See Photo 8.**



9. Insure the lower window mounts are seated to the bottom of the cage on the UTV. **See Photo 9.**
10. Place the upper brackets onto the stiffening bars 1/4-20 x 1.5" long bolts. **See Photo 10.**



11. Secure the upper bracket using the supplied fluted knob. Hand Tighten the knob. **See Photo 11.**
12. Secure the remaining brackets using the fluted knobs. **See Photo 12.**





By purchasing any item sold by Rough Country, LLC, the buyer expressly warrants that he/she is in compliance with all applicable, State, and Local laws and regulations regarding the purchase, ownership, and use of the item. It shall be the buyers responsibility to comply with all Federal, State and Local laws governing the sales of any items listed, illustrated or sold. The buyer expressly agrees to indemnify and hold harmless Rough Country, LLC for all claims resulting directly or indirectly from the purchase, ownership, or use of the items.

