

## CFMOTO 1000XL/PRO 2017-2025 OVER BED CARGO RACK

**Thank you for choosing Rough Country for all your vehicle needs.**

Please read instructions before beginning installation. Check the kit hardware against the kit contents shown below. Be sure you have all needed parts and know where they go.

If question's exist, please call us @1-800-222-7023. We will be happy to answer any questions concerning this product. Check all fasteners for proper torque. Check to ensure adequate clearance between all components. Periodically check all hardware for tightness.

### Kit Contents:

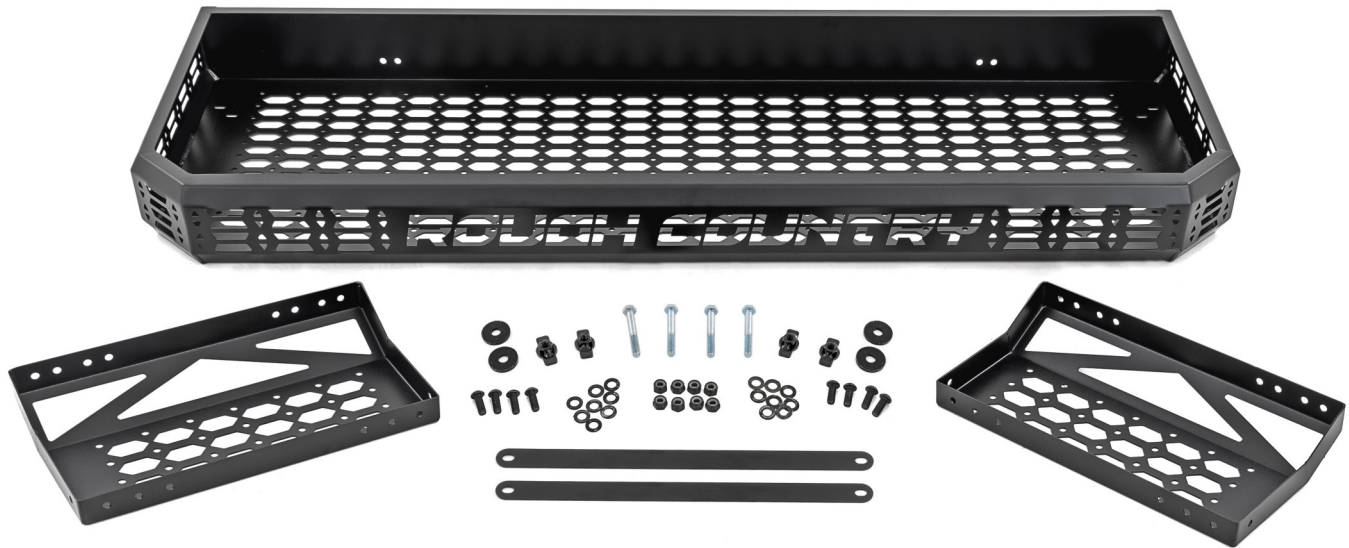
- 2- Side Panel
- 2- Rack Strap
- 1- Cargo Rack

### Tools Needed

- 5mm Allen Wrench
- 13mm Socket/Wrench

### Hardware Included:

- 8- 8mm x 20 Button Head
- 8- 8mm Nylock Nut
- 4- 8mm x 60mm Hex Bolt
- 16- 8mm Flat Washer
- 4- Flagnut
- 4- Flagnut Washer



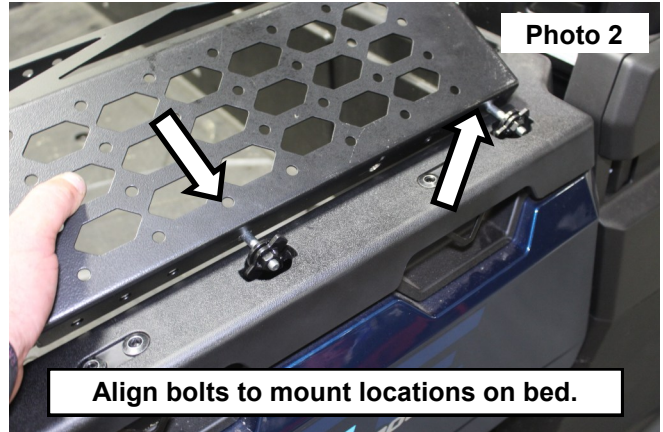
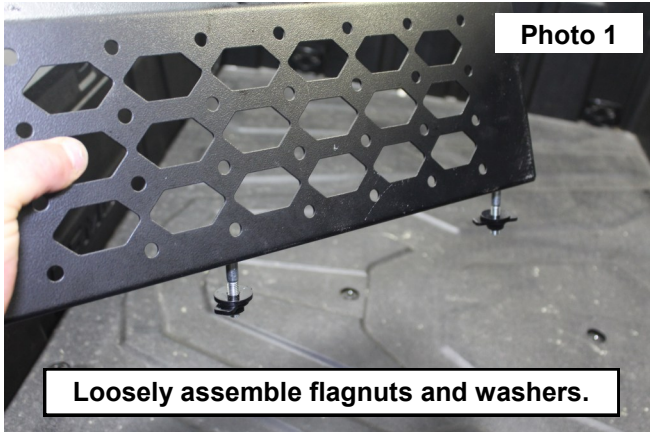
### Torque Specs:

Size	Grade 5	Grade 8	Size	Class 8.8	Class 10.9
5/16"	15 ft/lbs	20ft/lbs	6MM	5ft/lbs	9ft/lbs
3/8"	30 ft/lbs	35ft/lbs	8MM	18ft/lbs	23ft/lbs
7/16"	45 ft/lbs	60ft/lbs	10MM	32ft/lbs	45ft/lbs
1/2"	65 ft/lbs	90ft/lbs	12MM	55ft/lbs	75ft/lbs
9/16"	95 ft/lbs	130ft/lbs	14MM	85ft/lbs	120ft/lbs
5/8"	135ft/lbs	175ft/lbs	16MM	130ft/lbs	165ft/lbs
3/4"	185ft/lbs	280ft/lbs	18MM	170ft/lbs	240ft/lbs

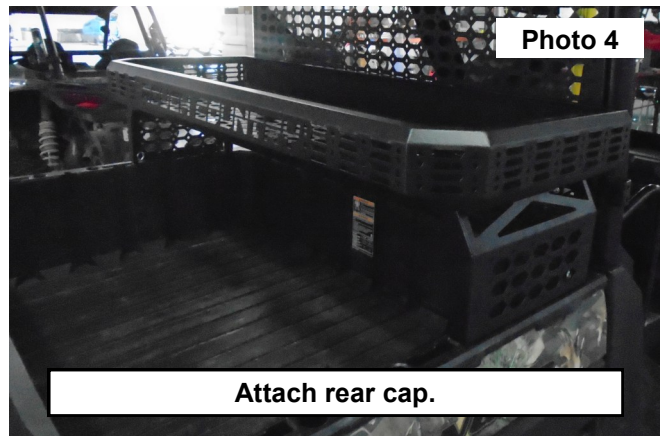
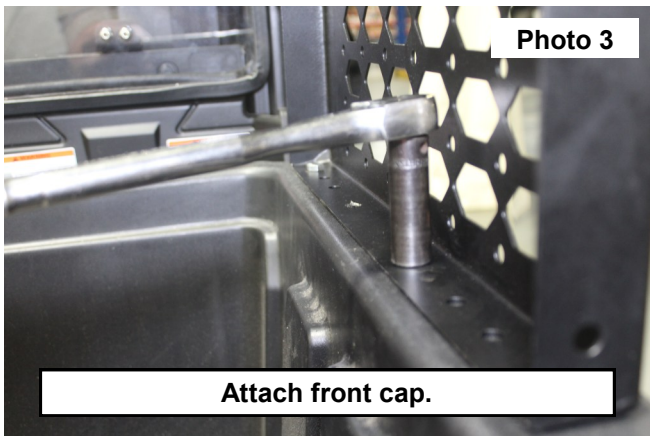


## INSTALLATION INSTRUCTIONS

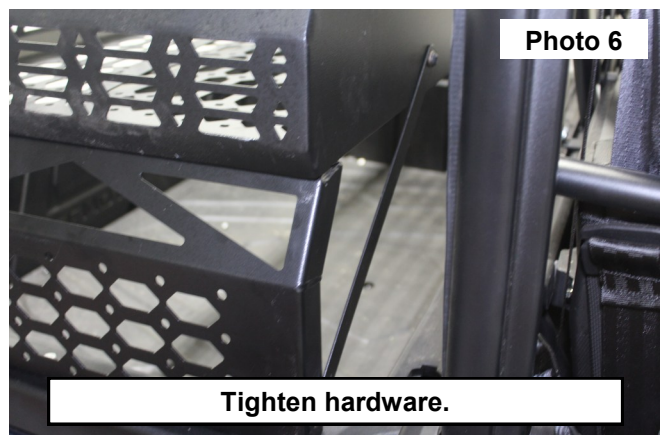
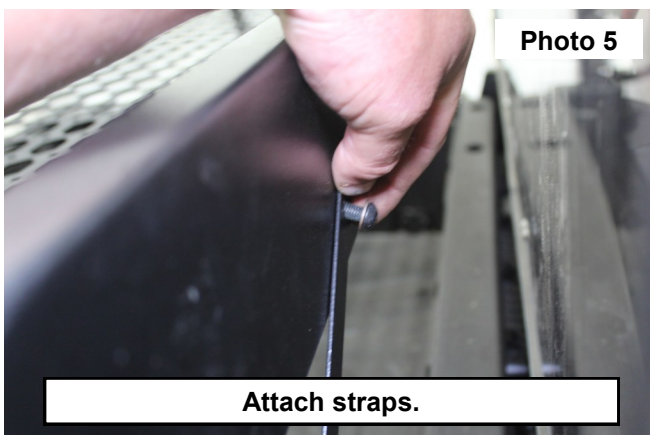
1. Loosely assemble (2 ea.) 8mm hex bolt, flagnut washer and flagnut on each side panel. See Photo 1.
2. Hex bolts will need to be placed in the 1st and 5th holes on the side panels. **See Photo 2. NOTE: Insure the side panels are angled to the inside.**



3. With the 13mm socket, loosely attach the 8mm hex bolt on the side panels. **See Photo 3.**
4. Using (4 ea.) 8mm button head bolts and 8mm nylock nuts to attach the basket to the side rails. **See Photo 4.**



5. Using (4 ea.) 8mm button head bolts and 8mm nylock nuts to attach the rack straps to basket and side rails. **See Photo 5 and Photo 6.**
6. Using a 5mm allen wrench and 13mm socket, tighten all hardware.



By purchasing any item sold by Rough Country, LLC, the buyer expressly warrants that he/she is in compliance with all applicable, State, and Local laws and regulations regarding the purchase, ownership, and use of the item. It shall be the buyer's responsibility to comply with all Federal, State and Local laws governing the sales of any items listed, illustrated or sold. The buyer expressly agrees to indemnify and hold harmless Rough Country, LLC for all claims resulting directly or indirectly from the purchase, ownership, or use of the items.

