

## POLARIS 2020 RZR Pro Rear Cargo Gate

Thank you for choosing Rough Country for all your vehicle needs.

Please read instructions before beginning installation. Check the kit hardware against the kit contents shown below. Be sure you have all needed parts and know where they go.

If question exist, please call us @1-800-222-7023. We will be happy to answer any questions concerning this product.

Check all fasteners for proper torque. Check to ensure for adequate clearance between all components.

Periodically check all hardware for tightness.

### KIT CONTENTS:

Rear Cargo Gate x1  
Lower Cargo Gate Brackets x2

### TOOLS NEEDED:

T40 Torx Bit  
4mm Allen Wrench  
10mm Wrench or Socket

### HARDWARE INCLUDED:

6mm-1.0 x 20mm Button Head Bolts x2  
6mm Flat Washers x4  
6mm-1.0 Nylock Nuts x2



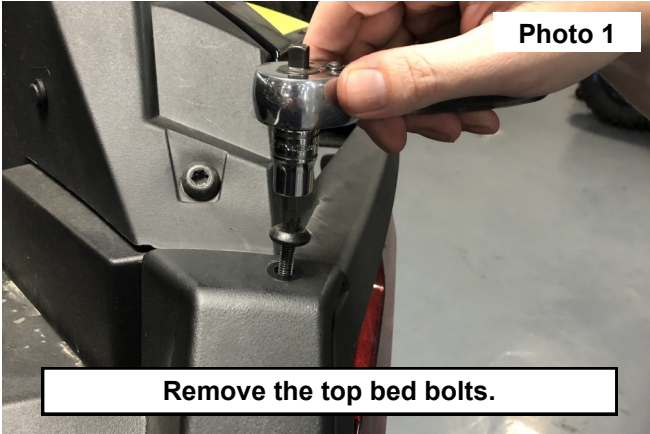
### Torque Specs:

Size	Grade 5	Grade 8	Size	Class 8.8	Class 10.9
5/16"	15 ft/lbs	20ft/lbs	6MM	5ft/lbs	9ft/lbs
3/8"	30 ft/lbs	35ft/lbs	8MM	18ft/lbs	23ft/lbs
7/16"	45 ft/lbs	60ft/lbs	10MM	32ft/lbs	45ft/lbs
1/2"	65 ft/lbs	90ft/lbs	12MM	55ft/lbs	75ft/lbs
9/16"	95 ft/lbs	130ft/lbs	14MM	85ft/lbs	120ft/lbs
5/8"	135ft/lbs	175ft/lbs	16MM	130ft/lbs	165ft/lbs
3/4"	185ft/lbs	280ft/lbs	18MM	170ft/lbs	240ft/lbs

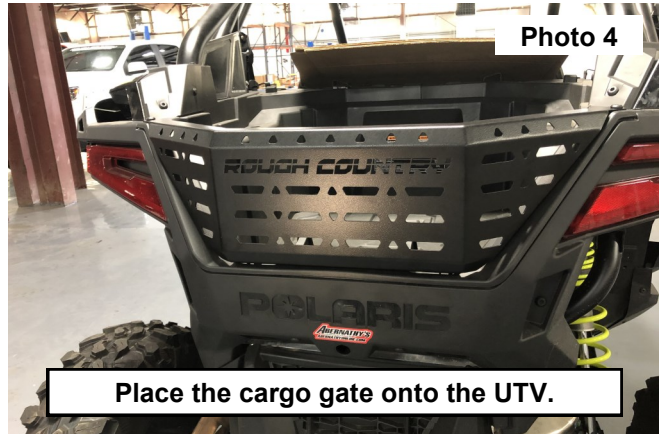
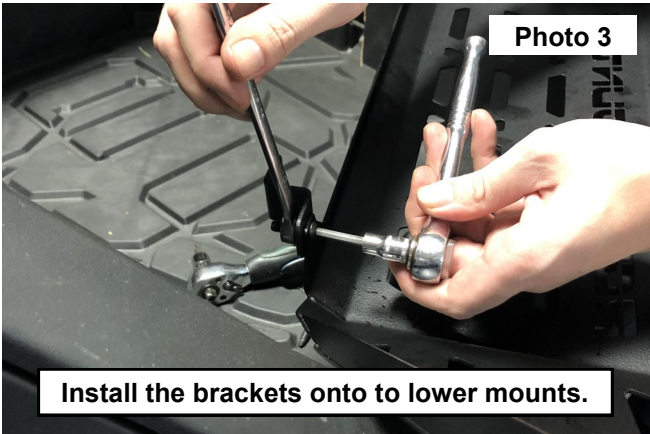


## INSTALLATION INSTRUCTIONS

1. Remove the bolts on the top edge of the bed using a T40 Torx bit. **See Photo 1.** Retain hardware.
2. Remove the bolts in the lower bed pocket using a T40 Torx bit. **See Photo 2.** Retain hardware.



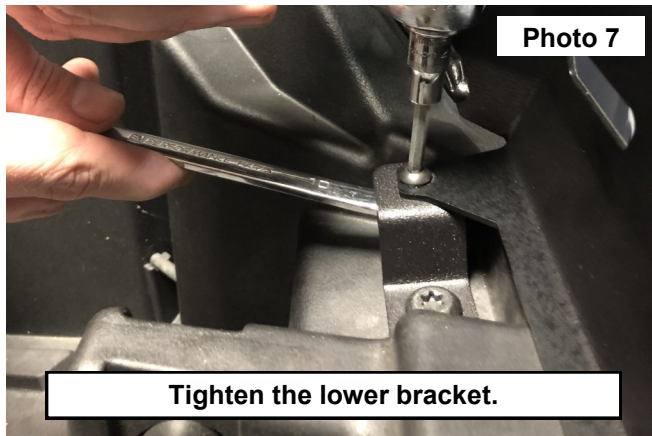
3. Install the brackets onto to the lower mounts of the cargo gate using (1) of the supplied 6mm x 20mm button head bolts (2) 6mm flat washers and (1) 6mm nylock nut. Snug the hardware into position using a 4mm allen wrench and a 10mm wrench. **See Photo 3.**
4. Install the opposite side lower mounting bracket then. Place the cargo gate onto the rear of the UTV. **See Photo 4.**



5. Place the retained bolts into the top of the cargo rack. Tighten using a T40 Torx bit. **See Photo 5.**
6. Place the retained bolts into the lower mount attached to the cargo rack. Tighten using a T40 Torx bit. **See Photo 6.**



7. Tighten the bracket to the cargo rack using a 4mm allen wrench and a 10mm wrench. **See Photo 7.**



By purchasing any item sold by Rough Country, LLC, the buyer expressly warrants that he/she is in compliance with all applicable, State, and Local laws and regulations regarding the purchase, ownership, and use of the item. It shall be the buyers responsibility to comply with all Federal, State and Local laws governing the sales of any items listed, illustrated or sold. The buyer expressly agrees to indemnify and hold harmless Rough Country, LLC for all claims resulting directly or indirectly from the purchase, ownership, or use of the items.

