

ROUGH COUNTRY

SUSPENSION SYSTEMS®

Third Generation Toyota Tundra In-Bed Molle Panel Kit

Thank you for choosing Rough Country for all your vehicle needs.

Please read instructions before beginning installation. Check the kit hardware against the kit contents shown below. Be sure you have all needed parts and know where they go.

If question exist, please call us @1-800-222-7023. We will be happy to answer any questions concerning this product.

Check all fasteners for proper torque. Check to ensure for adequate clearance between all components.

Periodically check all hardware for tightness.

Kit Contents:

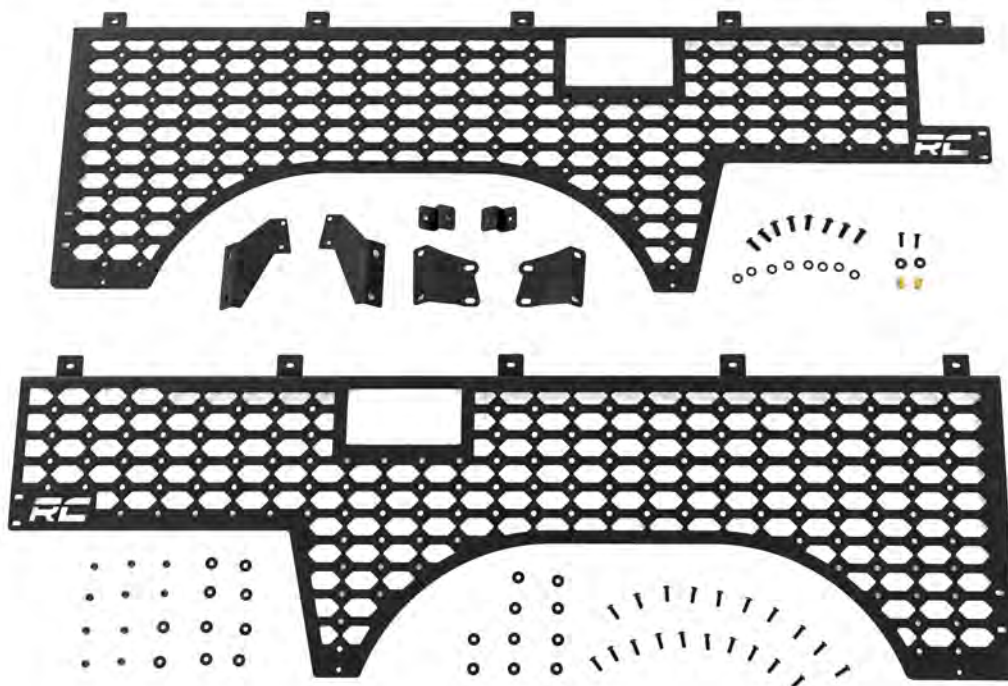
Molle Panel Driver x1
 Molle Panel Passenger x1
 Front Bracket Driver x1
 Front Bracket Passenger x1
 Rear Bracket Driver x1
 Rear Bracket Passenger x1
 Support Bracket x2

Tools Needed:

Drill Motor
 25/64 Bit
 4mm Allen Wrench
 8mm Allen Wrench
 13mm Wrench
 Paint Pen
 Nutsert Tool Kit

Hardware Included:

6mm x 20mm Button Head Bolts x22
 6mm Nutsert x2
 6mm Flat Washer x22
 6mm-1.0 Nylock Nut x10
 8mm Flat Washer x8
 8mm-1.25 x 20mm Button Head Allen x8



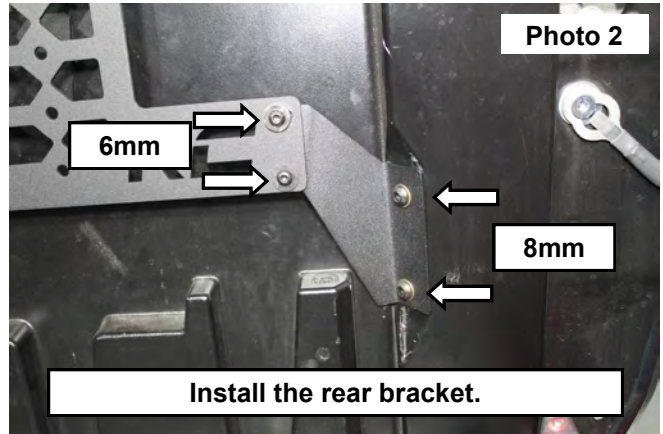
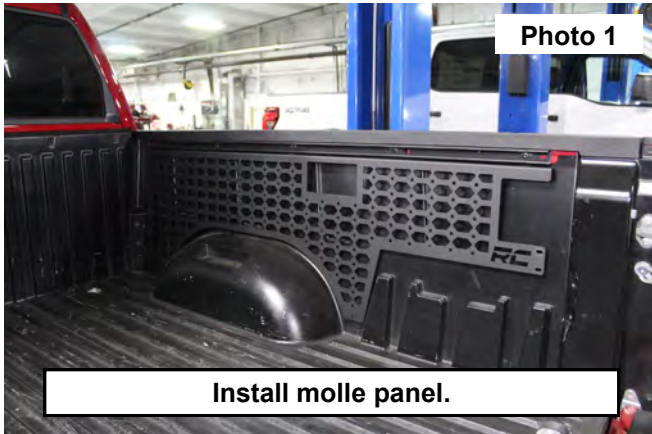
Torque Specs:

Size	Grade 5	Grade 8	Size	Class 8.8	Class 10.9
5/16"	15 ft/lbs	20ft/lbs	6MM	5ft/lbs	9ft/lbs
3/8"	30 ft/lbs	35ft/lbs	8MM	18ft/lbs	23ft/lbs
7/16"	45 ft/lbs	60ft/lbs	10MM	32ft/lbs	45ft/lbs
1/2"	65 ft/lbs	90ft/lbs	12MM	55ft/lbs	75ft/lbs
9/16"	95 ft/lbs	130ft/lbs	14MM	85ft/lbs	120ft/lbs
5/8"	135ft/lbs	175ft/lbs	16MM	130ft/lbs	165ft/lbs
3/4"	185ft/lbs	280ft/lbs	18MM	170ft/lbs	240ft/lbs

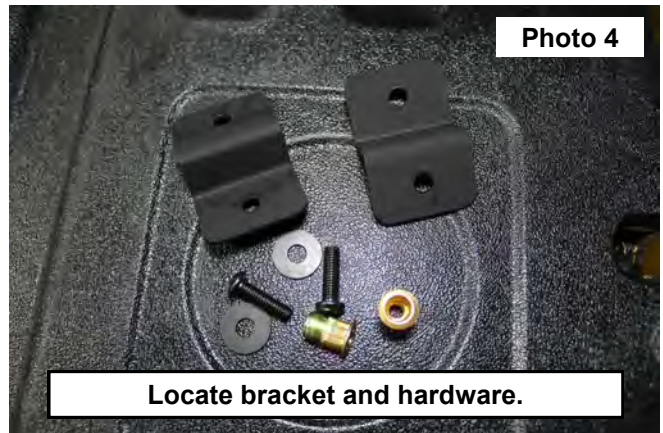
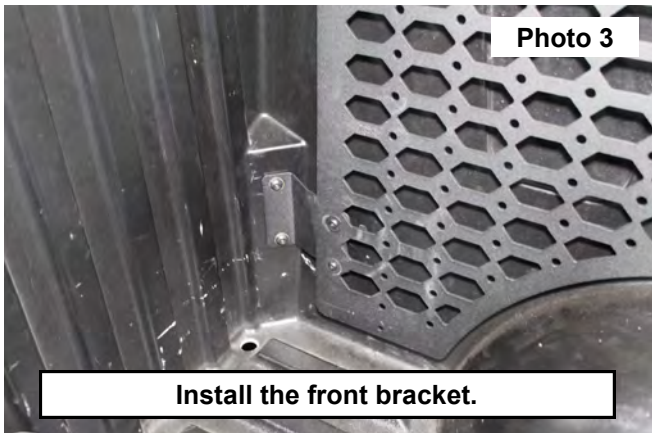


INSTALLATION INSTRUCTIONS

1. Place the (Passengers side shown) Mollie panel onto the inside of the bed. **See Photo 1.**
2. Secure the rear of the panel, place the off set bracket to the inside corner of the bed and secure using (2) 8mm flat washers and (2) 8mm button head bolts in the bed. Then secure the molly panel to the bracket using (2) 6mm button head bolts (4) 6mm washers and (2) 6mm nylock nuts. Snug hardware at this time by hand. **See Photo 2.**



3. Secure the front of the panel, place the more square bracket to the inside corner of the bed and secure using (2) 8mm flat washers and (2) 8mm button head bolts in the bed. Then secure the molly panel to the bracket using (2) 6mm button head bolts (4) 6mm washers and (2) 6mm nylock nuts. **See Photo 3.**
4. Tighten the above installed hardware in steps 2 and 3 setting the molly panel into place using a 4mm Allen on the 6mm bolts and a 6mm Allen on the 8mm bolts 13mm wrench for the nut.
5. Locate the lower bracket, nutsert, 6mm Allen head bolt and 6mm flat washer. **See Photo 4.**

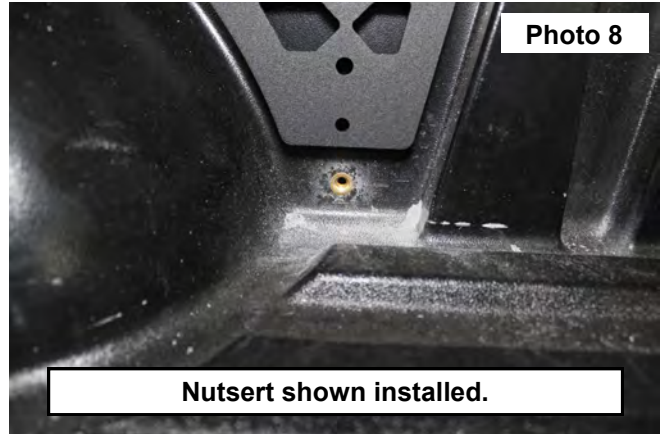


6. Place a bracket and bolt onto the molly panel for mock up only. Mark the hole using a paint pen, then remove the bracket and bolt. **See Photo 5.**
7. Use a 25/64 bit to transfer the hole into the bed of the vehicle. **See Photo 6.**



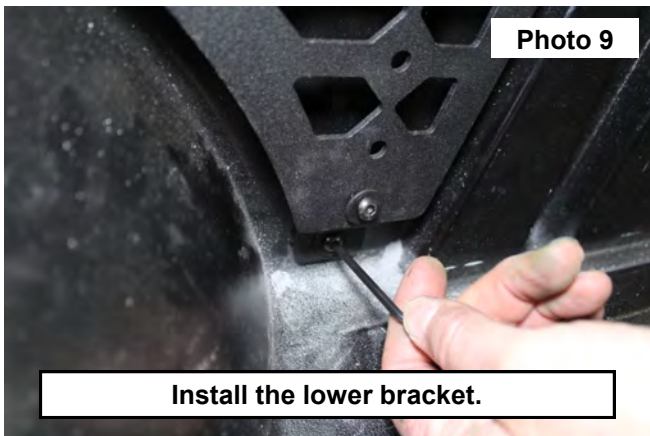
8. Insert the nutsert into the bed. The nutsert will need to be installed with the tool or the supplied hardware. **See Photo 7.**

9. The nutsert shown installed into the bed. **See Photo 8.**



10. Place the bracket to the molle panel and secure using (1) 8mm flat washer and (1) 8mm button head bolt and (1) 8mm nylock nut. Then secure the molly panel to the nutsert in the bed using (1) 6mm button head bolt and (1) 6mm washer. **See Photo 9.**

11. Install the opposite bed side molle panel using the same hardware in steps 2-10. **See Photo 10.**



By purchasing any item sold by Rough Country, LLC, the buyer expressly warrants that he/she is in compliance with all applicable, State, and Local laws and regulations regarding the purchase, ownership, and use of the item. It shall be the buyers responsibility to comply with all Federal, State and Local laws governing the sales of any items listed, illustrated or sold. The buyer expressly agrees to indemnify and hold harmless Rough Country, LLC for all claims resulting directly or indirectly from the purchase, ownership, or use of the items.

