

ROUGH COUNTRY

SUSPENSION SYSTEMS®

NISSAN 2022 Frontier Ditch Mount

Thank you for choosing Rough Country for all your vehicle needs.

Please read instructions before beginning installation. Check the kit hardware against the kit contents shown below. Be sure you have all needed parts and know where they go.

If question exist, please call us @1-800-222-7023. We will be happy to answer any questions concerning this product.

Check all fasteners for proper torque. Check to ensure for adequate clearance between all components.

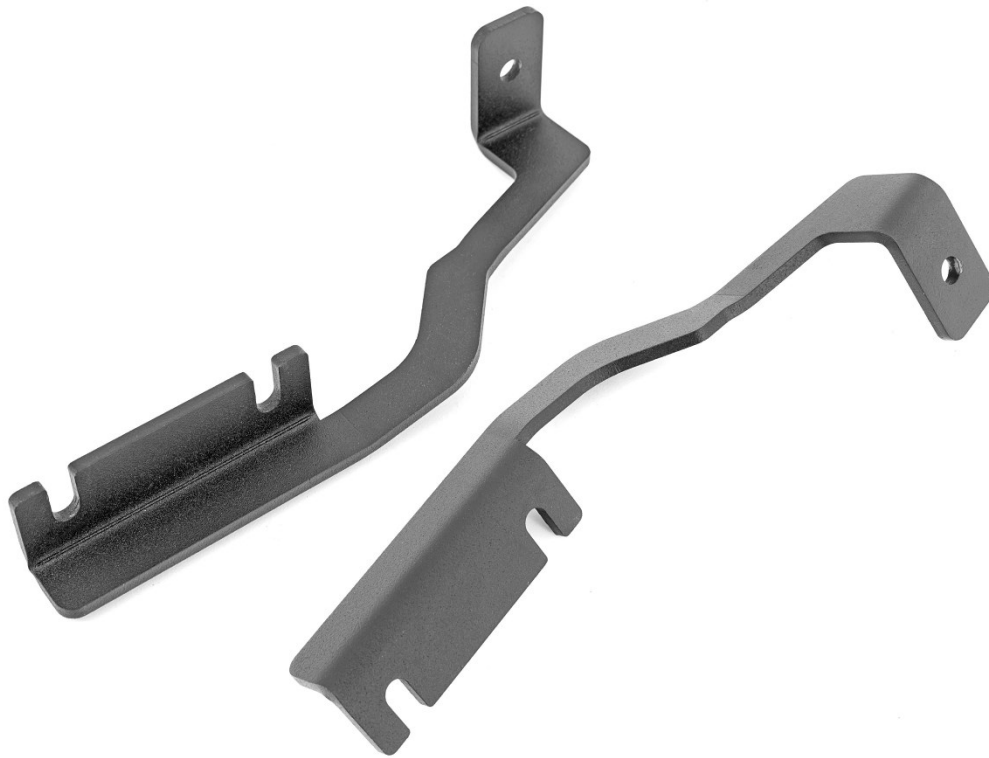
Periodically check all hardware for tightness.

Kit Contents:

Driver Side Mount x1
Pass Side Mount x1

Tools Needed:

12mm Socket/Wrench
Snips or Blade for Trimming



Torque Specs:

Size	Grade 5	Grade 8	Size	Class 8.8	Class 10.9
5/16"	15 ft/lbs	20ft/lbs	6MM	5ft/lbs	9ft/lbs
3/8"	30 ft/lbs	35ft/lbs	8MM	18ft/lbs	23ft/lbs
7/16"	45 ft/lbs	60ft/lbs	10MM	32ft/lbs	45ft/lbs
1/2"	65 ft/lbs	90ft/lbs	12MM	55ft/lbs	75ft/lbs
9/16"	95 ft/lbs	130ft/lbs	14MM	85ft/lbs	120ft/lbs
5/8"	135ft/lbs	175ft/lbs	16MM	130ft/lbs	165ft/lbs
3/4"	185ft/lbs	280ft/lbs	18MM	170ft/lbs	240ft/lbs



INSTALLATION INSTRUCTIONS

1. Raise the hood and loosen (**DO NOT REMOVE**) the hood from the hinge using a 12mm socket/wrench.
NOTE: Only do one side of the hood at a time. See Photo 1.
2. Install the supplied ditch mount between the hinge and the flange nuts and tighten nuts. **See Photo 2 and Photo 3.**



3. Slowly lower the hood until the ditch mount comes into contact with the cowl and trace around the ditch mount. **See Photo 4.**



4. Cut out the traced area on the cowl. **See Photo 5 and Photo 6.**



5. Reinstall the cowl. **See Photo 7.**
6. Repeat steps for the other side of the hood.
7. Install the cube light to the ditch mount using the hardware supplied with the light. **See Photo 8.**



8. Run the wiring as desired and be sure to keep away from moving parts and hot surfaces.

By purchasing any item sold by Rough Country, LLC, the buyer expressly warrants that he/she is in compliance with all applicable, State, and Local laws and regulations regarding the purchase, ownership, and use of the item. It shall be the buyers responsibility to comply with all Federal, State and Local laws governing the sales of any items listed, illustrated or sold. The buyer expressly agrees to indemnify and hold harmless Rough Country, LLC for all claims resulting directly or indirectly from the purchase, ownership, or use of the items.

