



2014 – 2020 Tundra Hood Bulge Light

Thank you for choosing Rough Country for all of your suspension needs.

Rough Country recommends that a certified technician install this system. In addition to these instructions, professional knowledge of disassemble/reassembly procedures as well as post installation checks must be known. Attempts to install this system without this knowledge and expertise may jeopardize the integrity and/or operating safety of the vehicle. Please read all the instructions before beginning the installation. Check the kit hardware against the “Kit Contents” list below. If question exist, please call us @1-800-222-7023. We will be happy to answer any questions concerning this product. Check all fasteners for proper torque. Check to ensure for adequate clearance between all components. Check and retighten wheels at 50 miles and again at 500 miles. Periodically check all hardware for tightness. Be sure you have all the needed parts and understand where they go. Also, please review the “Tools Needed” list to be certain you have the necessary tools to complete the installation.

PRODUCT USE INFORMATION

⚠ WARNING As a general rule, the taller a vehicle is the easier it will roll. We strongly recommend that seat belts and shoulder harnesses be worn at all times. Braking performance and capabilities are decreased when significantly larger/heavier tires and wheels are used. Do not add, alter, or fabricate any factory or after-market parts which increase vehicle height over the intended height of the Rough Country product purchased. Rough Country makes no claims regarding lifting devices and excludes any and all implied claims. We will not be responsible for any product that is altered.

NOTICE TO DEALER AND VEHICLE OWNER

⚠ NOTICE Any vehicle equipped with any Rough country product must have the “Warning to Driver” decal installed on the sun visor or dash. The decal is to act as a constant reminder for whoever is operating the vehicle of its unique handling characteristics. **INSTALLING DEALER**—It is your responsibility to install the warning decal and to forward these installation instructions on too the vehicle owner for review and to be kept in the vehicle for its service life.



2014 – 2020 Tundra Hood Bulge Light

TOOLS NEEDED:

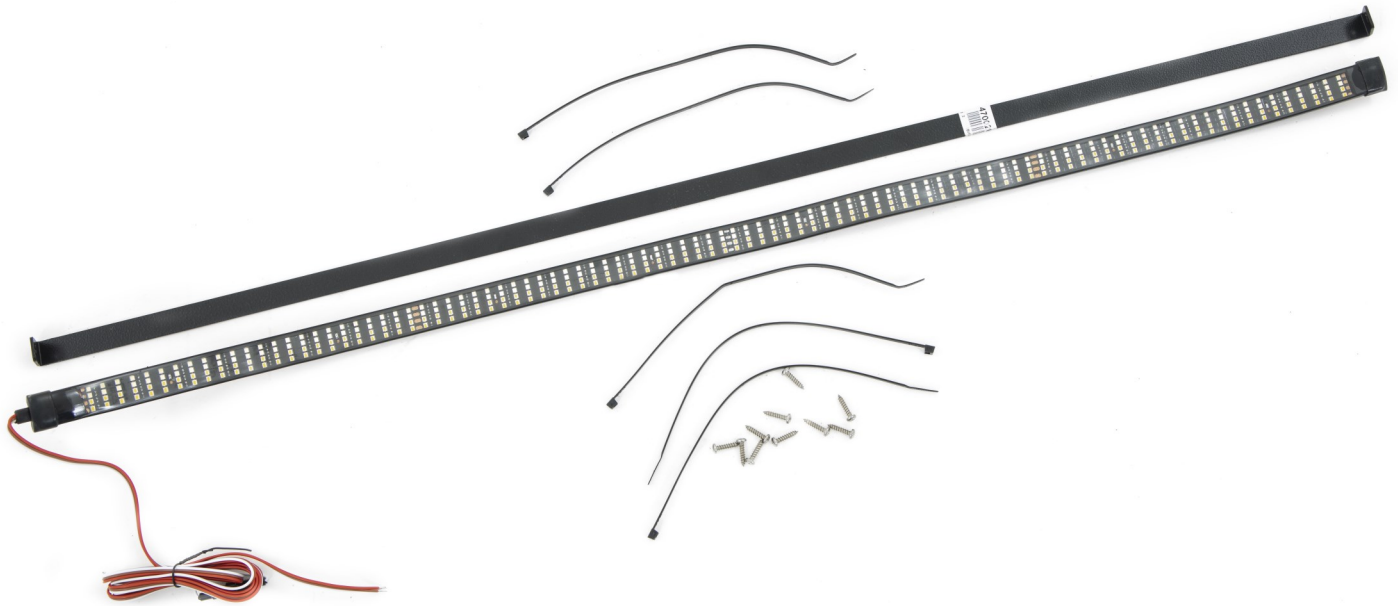
Drill
1/2" Bit
Phillips Head Driver
Metric Wrench/Socket
10mm

KIT CONTENTS:

Light Mount (1)

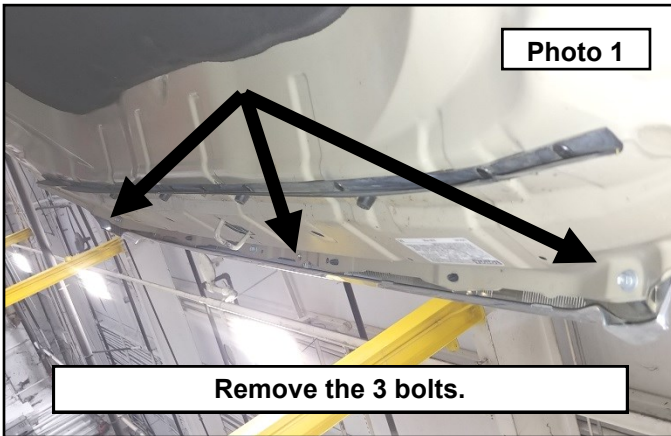
HARDWARE INCLUDED:

Stainless Self Tapping Screws (10)
Zip Ties (5)

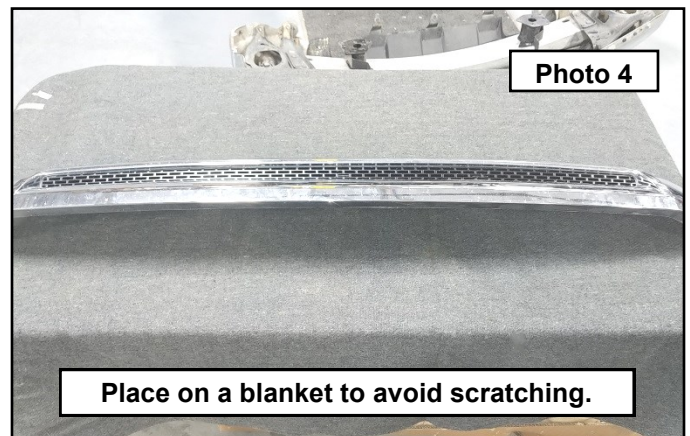


Bracket and Light Installation

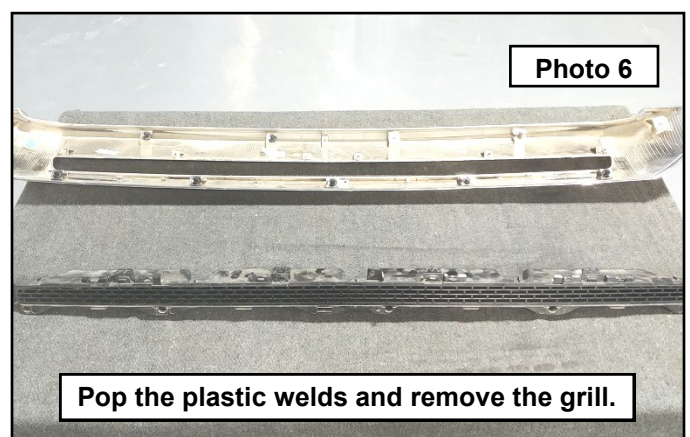
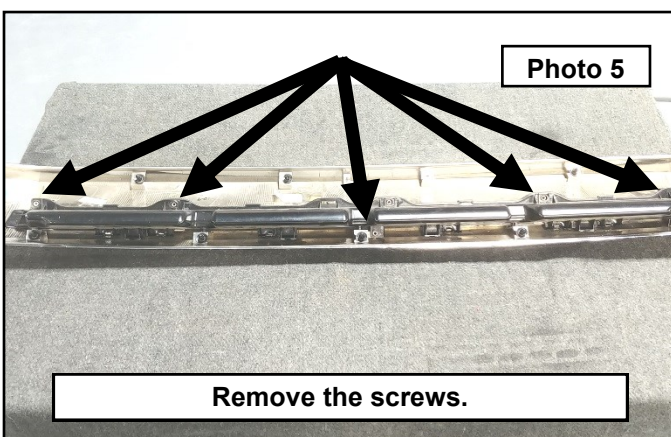
1. Open the hood. Remove the 3 bolts holding the hood bulge to the hood using a 10mm socket. Photo 1
2. Lower the hood so that you have easy access to the bulge. Suggestion is to use a block of wood under the hood to keep it from closing all the way. Photo 2



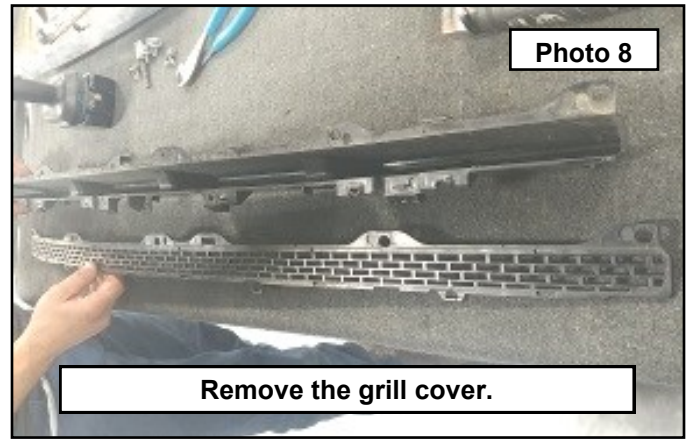
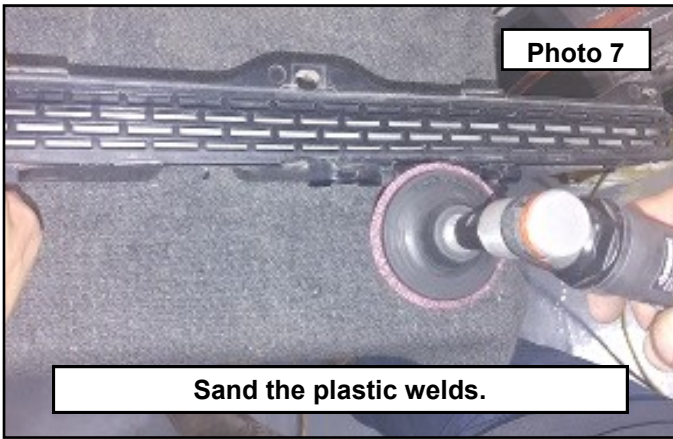
3. Grab the hood bulge and gently pull out away from the hood. There are a number of plastic retaining clips along its length. Take care to not twist or break the plastic mounts. Photo 3
4. Lay the bulge on a blanket to avoid scratching. Photo 4



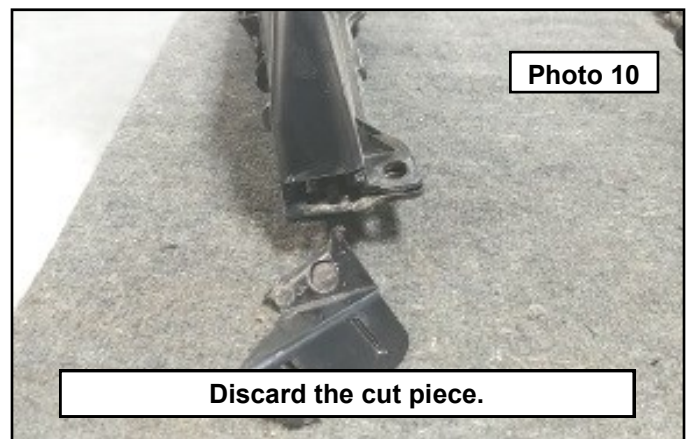
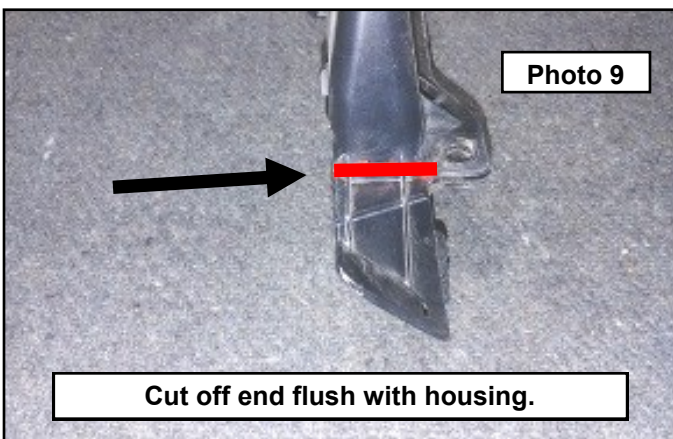
5. Turn the bulge over to access the screws holding the grill insert to the bulge. Remove these screws using a Phillips head screwdriver. Photo 5
6. Your grill may have a few plastic weld points along it. Gently pull the grill out of the surround while twisting to pop the plastic weld points. Photo 6



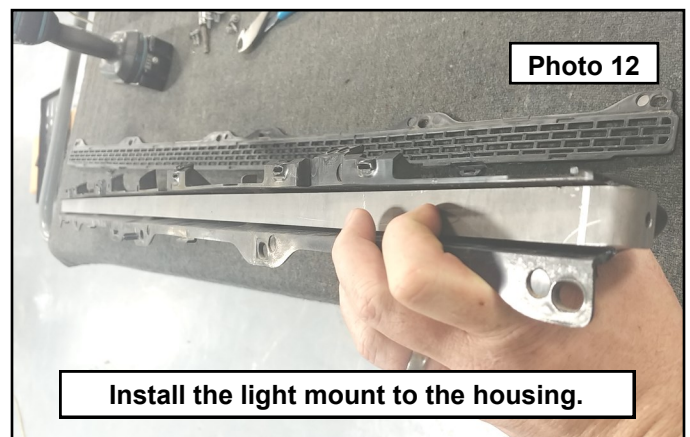
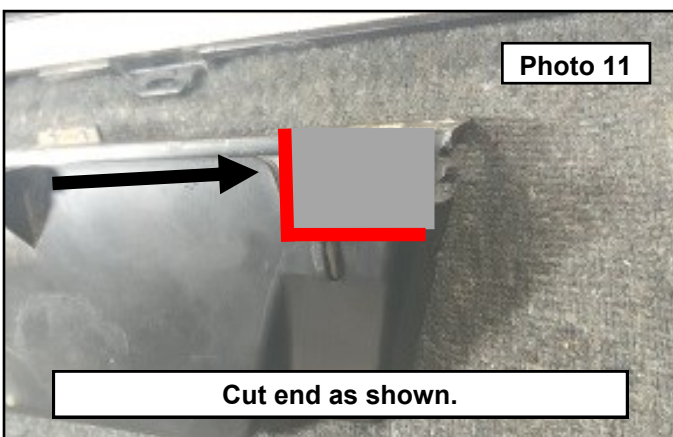
7. Locate all the plastic weld points on the grill and back housing. Use a suitable sander or other tool, to sand only the material that looks melted. You do not want to sand off all the grill tab. You will need this to hold the grill back on in a later step. Photo 7
8. Gently pry up on the grill to separate it from the housing. Once the grill is separated, use the sander to smooth the surface on the housing where all the plastic welds were. You want these areas to be flat so that you can drill into them later. Photo 8



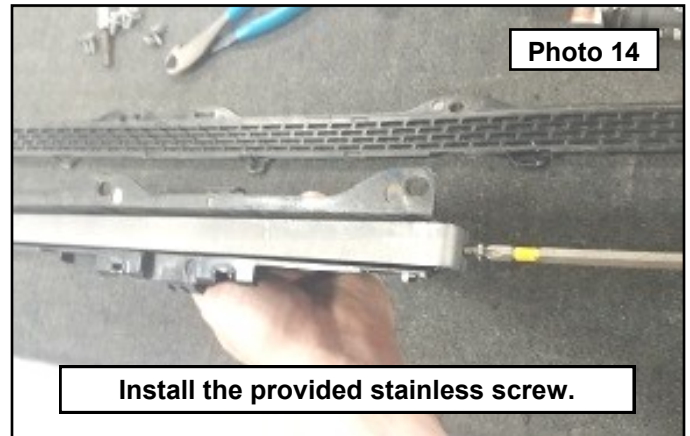
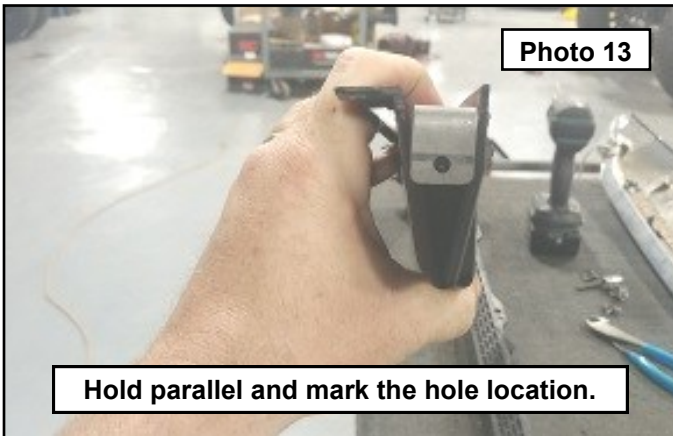
9. On each end of the housing, Mark as shown. Photo 9
10. Use a suitable cutting tool to remove the side pieces. Discard the ends. Photo 10



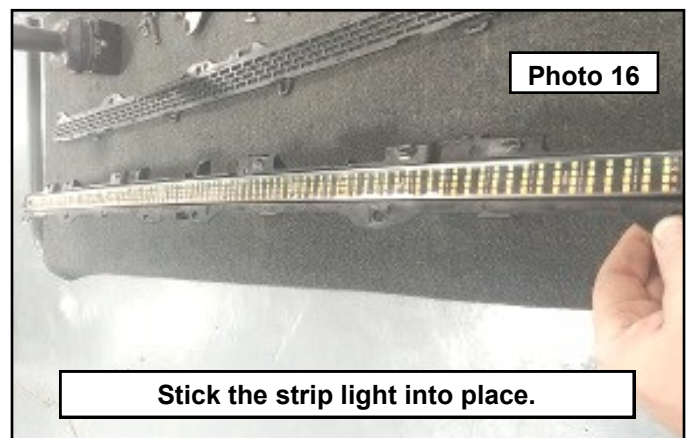
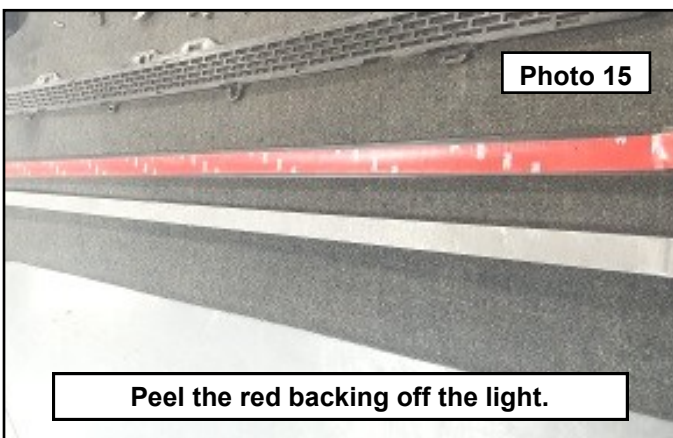
11. Once the ends are cut off, mark on the side of the housing 1/2" down from the front surface. Mark the sides 1/2" back from the ends as shown. You are creating a recess for the end of the flex light to sit into. Cut out as shown. Photo 11
12. Install the light mount with the ends on the outside of the factory housing. You may need to use a pry tool to get the end to pop over the plastic. Do not bend out of the way. The mount will fit with a little persuasion. Photo 12



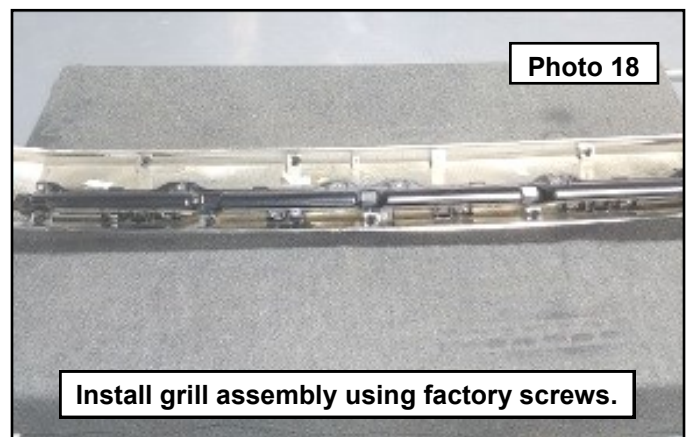
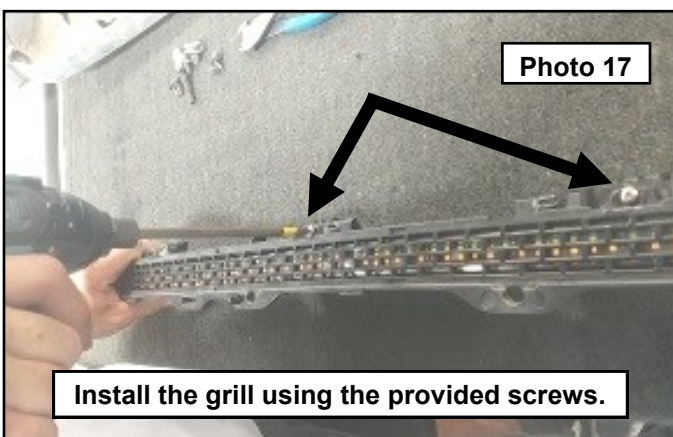
13. Once the light mount is in place, hold the main surface parallel with the grill surface and mark the hole location. Photo 13
14. Install a provided stainless self tapping plastic screw into the ends to hold the light mount in place using a Phillips driver. Repeat for the opposite side. Do not over tighten. If the middle of the mount starts to bow up, back the screws off a slight bit. Photo 14



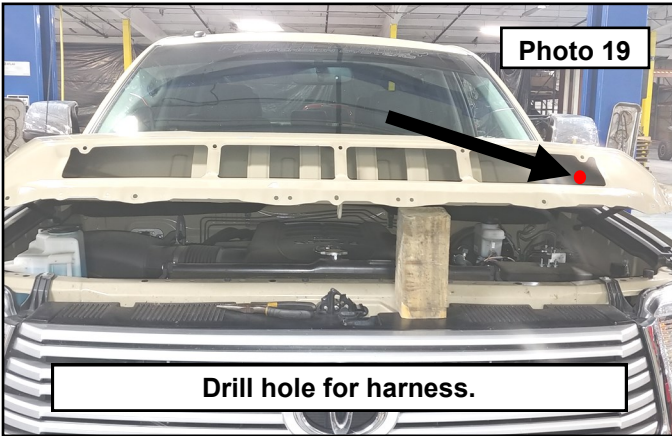
15. Lay the strip light out with the wire pigtail to the driver side of the housing. Peel off the red tape backing. Photo 15
16. Lay the strip light on to the light mount while making sure it is centered. Once satisfied with the fitment, press the light down firmly to insure the tape is holding the light in place. Photo 16



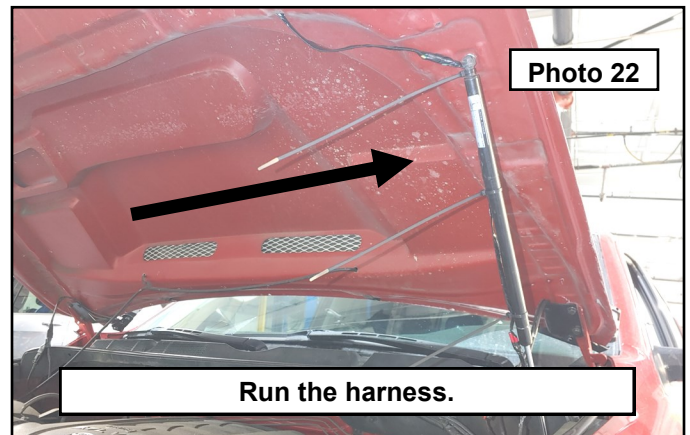
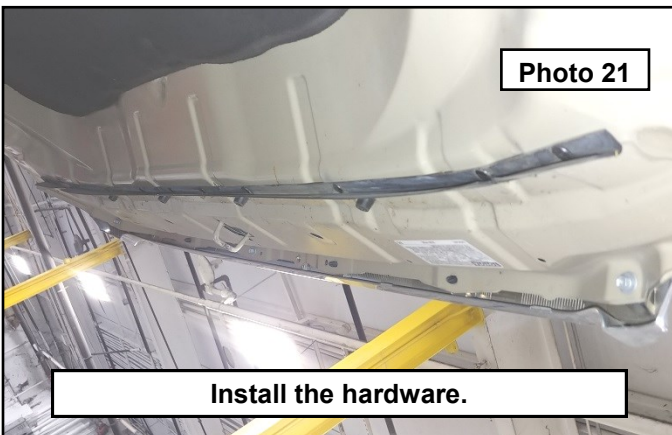
17. Once the light is in place, lay the grill back on top of the housing. At every point there was a plastic weld, install a provided screw using a Phillips driver. Photo 17
18. Install the grill assembly back to the surround using the previously removed factory screws. Photo 18



19. Mark and drill a 1/2" hole where indicated into the hood skin behind the grill opening on the driver side. This is for the light harness to pass through. Sand any burrs and paint the exposed metal with a quality rust preventative paint. Photo 19
20. Run the light harness through the hole you just made and snap the grill assembly into place. Photo 20



21. Once the snapped into place, install the factory hardware. Do not over tighten the hardware. Photo 21
22. Run the harness down the hood shock. Zip Tie to the shock at the pivot, the middle and the end of the cartridge. Run the harness down the fender to the area behind the drivers headlight. Photo 22



23. Connect the white wire to a ground source. The Brown wire controls white and the Red wire control amber light options. Connect to a power source of your choice to run either or both colors. Note: all states it is illegal to run a white light above the headlights while on the street. Check the local governing laws about the amber light if you plan on running on the street with it activated.

By purchasing any item sold by Rough Country, LLC, the buyer expressly warrants that he/she is in compliance with all applicable , State, and Local laws and regulations regarding the purchase, ownership, and use of the item. It shall be the buyers responsibility to comply with all Federal, State and Local laws governing the sales of any items listed, illustrated or sold. The buyer expressly agrees to indemnify and hold harmless Rough Country, LLC for all claims resulting directly or indirectly from the purchase, ownership, or use of the items.