

ROUGH COUNTRY

SUSPENSION SYSTEMS®



WARNING: This product contains a chemical known to the State of California to cause Cancer and Reproductive Harm. For more information, go to www.P65Warnings.ca.gov.

2019-2022 DODGE RAM 1500 2WD/4WD REAR WHEEL WELL LINER

PLEASE READ INSTRUCTIONS CAREFULLY BEFORE STARTING THE INSTALLATION.

NOTE: FOR EASIER INSTALLATION, REMOVE THE TIRE.

INCLUDED IN HARDWARE KIT:

1.



Driver Side & Passenger
Side Liner
1 pr

2.



"U" Clip
20 pcs

3.



Truss Head Screw
20 pcs

4.



Replacement Fender
Clip
4 pc

5.



Plastic Retainer
4 pcs

TOOLS NEEDED:

#2 Phillips Screwdriver
8mm Socket
10mm Socket
Pry Tool

PREPARATIONS:

Please clean the interior panels of the rear wheel well.

If vehicle comes equipped with factory wheel well liners, these will need to be removed, along with any fasteners involved.

SECTION 1: FACTORY WHEEL WELL LINER REMOVAL



Using an 8mm socket, remove 3 factory screws from front inner lip of rear wheel well.

NOTE: If your vehicle has factory flares, you will need to remove *all* factory screws from fender lip.



Using an 8mm socket, remove one factory screw from splash shield behind the wheel toward the front of the vehicle.



Remove front piece of 2-piece factory splash shield.



Using an 8mm socket, remove 2 factory screws from rear mud flap and 3 factory screws above mud flap.



Using a downward pulling motion, pry mud flap from vehicle, disengaging white factory clips inside. Replacement clips are provided if these break.



Once mud flap is removed, use an 8mm socket to remove one screw from underside of rear fender. Use a pry tool to remove any broken clips.



7

Using a 10mm socket, remove one factory bolt from factory splash shield behind wheel toward the rear of the vehicle.



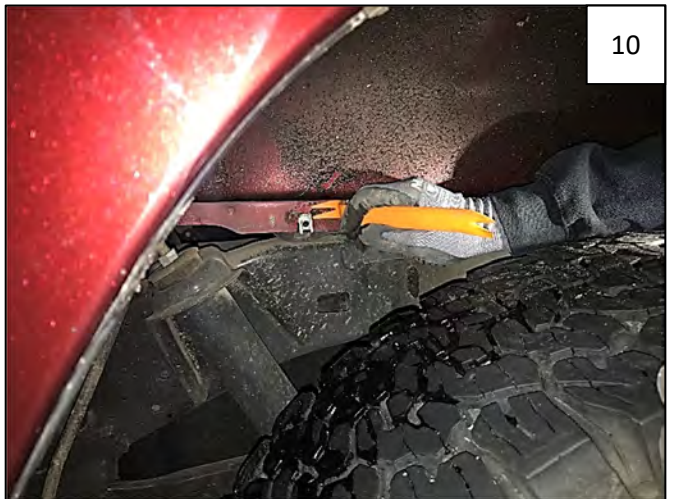
8

Remove rear piece of 2-piece factory splash shield.



9

Reinstall mud flap on vehicle. If factory clips broke when removing mud guard, use supplied Replacement Fender Clips.



10

Use a pry tool to remove factory clip from sheet metal at back front of wheel well.



11

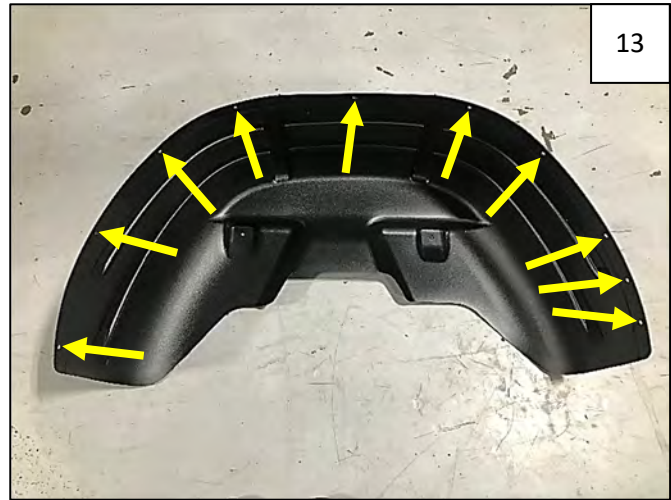
Remove factory clip from sheet metal at back rear of wheel well.



SECTION 2: REAR WHEEL WELL LINER INSTALLATION



Install 10 supplied "U" Clips over each hole along outer edge of Rear Wheel Well Liner. Flat side of clip will face out when part is installed.



Clip locations.



Slide the Rear Wheel Well Liner behind wheel at rear of vehicle.



Tuck Rear Wheel Well Liner behind sheet metal and under metal fender lip at all other outward facing edges.



At back of wheel well, install 2 supplied Plastic Retainers through holes in Rear Wheel Well Liner and into factory holes in sheet metal.



Using a #2 Phillips Screwdriver, install 10 supplied Truss Head Screws through holes along outer edge of fender and into clips installed in Steps 12-13.



Tighten all screws. Installation is complete; repeat for other side.