

## 15-UP FORD F150 REAR BUMPER

Thank you for choosing Rough Country for all your lighting needs.

### ▲ NOTICE

Please read instructions before beginning installation. Check the kit hardware against the kit contents shown below. Be sure you have all needed parts and know where they go.

If question exist, please call us @1-800-222-7023. We will be happy to answer any questions concerning the design, function, and correct use of our products.

### Tools Needed:

10mm Socket / Wrench  
13mm Socket / Wrench  
17mm Socket / Wrench  
21mm Socket / Wrench

### Supplied Allen Wrenches:

2.5MM  
4MM

### Kit Contents

Rear Bumper  
Flag Nuts (2)  
Bumper Plugs-To be used if proximity feature not included on vehicle (4)  
Bag Containing:  
Zip Ties (4)  
Allen head Sensor bolts (4)  
License Plate inserts (2)  
Plastic flag nut retainers (4)



NOTICE: LED light wiring will be performed referencing instructions included with those applicable kits

### INSTALLATION INSTRUCTIONS

1. Remove the ground from the driver side of the vehicle on the driver side as shown using a 10mm wrench. **See Photo 1.** Retain the stock hardware for reuse.
2. Unplug wiring harness leading to bumper from frame to allow it to be removed.
3. Remove the three bolts on each side using a 21mm wrench. (Driver Side Shown) **See Photo 2.**

PHOTO 1

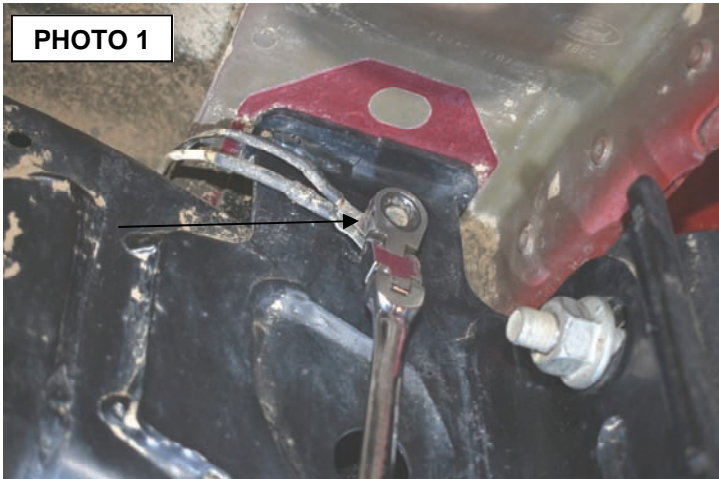
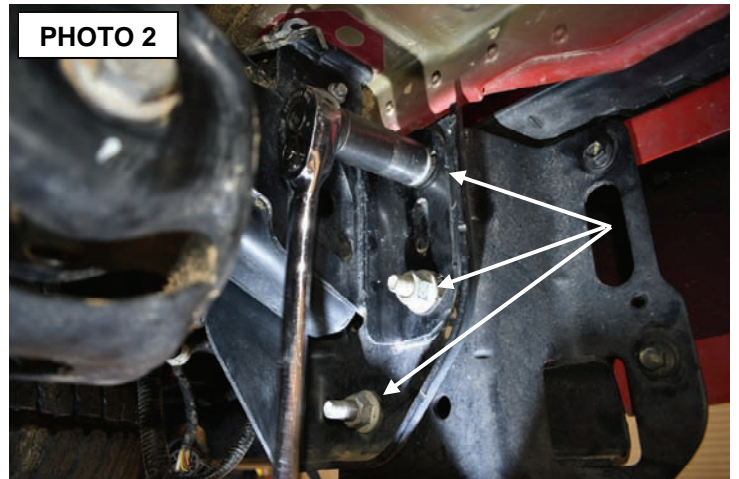
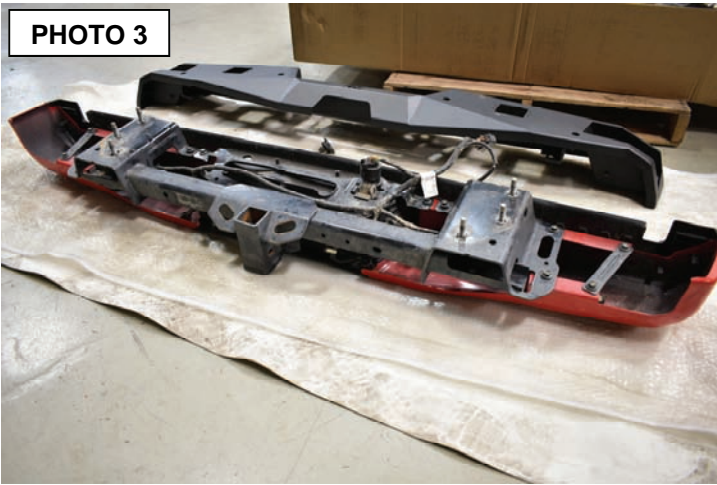


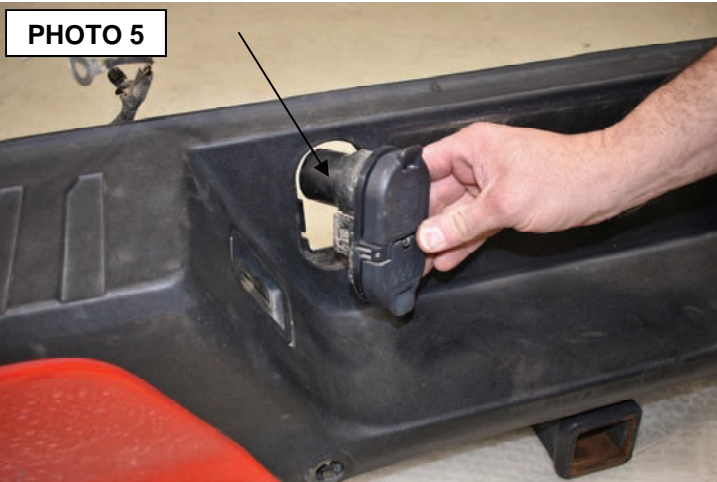
PHOTO 2



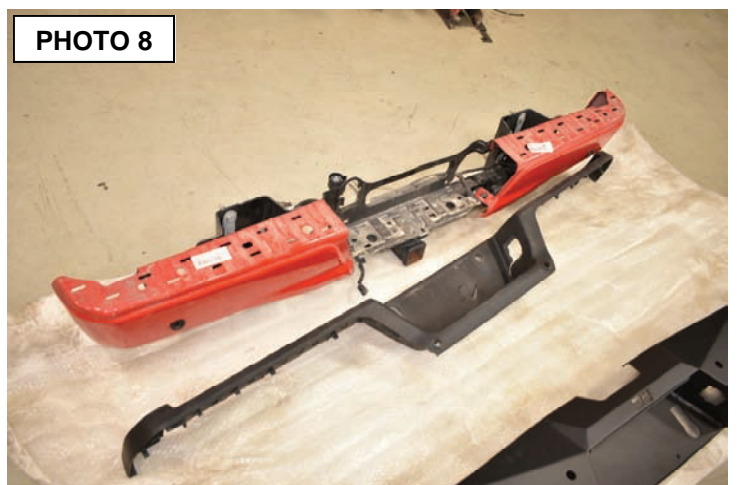
4. Remove the bumper from the vehicle and lay on a flat surface to prepare for disassembly. **See Photo 3.**
5. Remove the wiring harness from the trailer connector and all other connections on the bumper. **See Photo 4.**



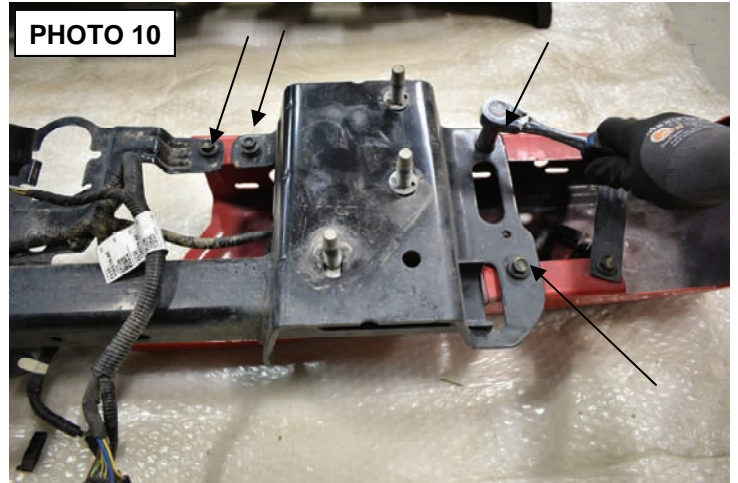
6. Remove the trailer connector housing. **See Photo 5.**
7. Remove the license plate illumination housings and sensors if equipped. **See Photo 6 & 7.**



8. Separate the plastic from the top of the bumper as shown. **See Photo 8.**



9. Remove the two bolts using a 13mm wrench, one each side, to remove the bumper covers. **See Photo 9.**  
10. Remove the 8 bolts (4 each side) using 13mm wrench that secures the hitch assembly to the bumper covers. **See Photo 10.**



11. All that will remain will be the hitch portion of the bumper assembly. **See Photo 11.**  
12. If factory equipped, reinstall all the factory sensors in the new bumper. **See Photo 12.** If not factory equipped, install supplied rubber inserts in mounts and tighten with supplied 2.5mm Allen wrench.



13. Install the supplied flush mount lights with supplied hardware as shown in **Photo 13** using a 10mm wrench and supplied 4mm Allen head wrench.  
14. Install the supplied flag nut (1 each side) in the bumper as shown. **See Photo 14.**



15. Place supplied plastic retainers over thread to hold flag nut in place. **See Photo 15.**

16. Lay the hitch assembly on the rear bumper as shown. **See Photo 16.**

PHOTO 15

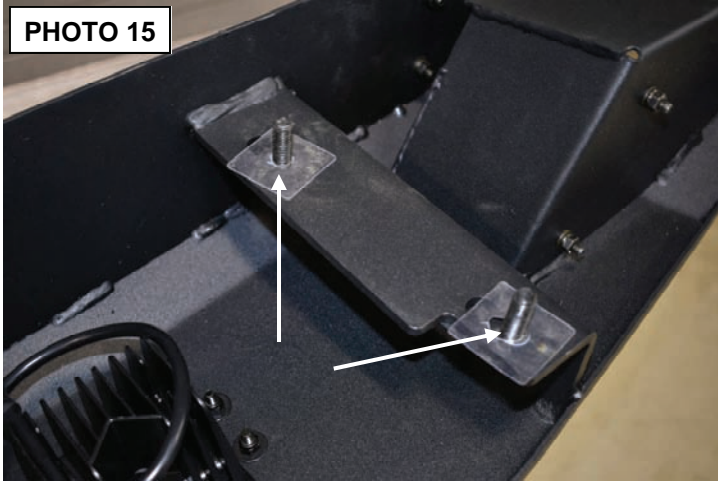
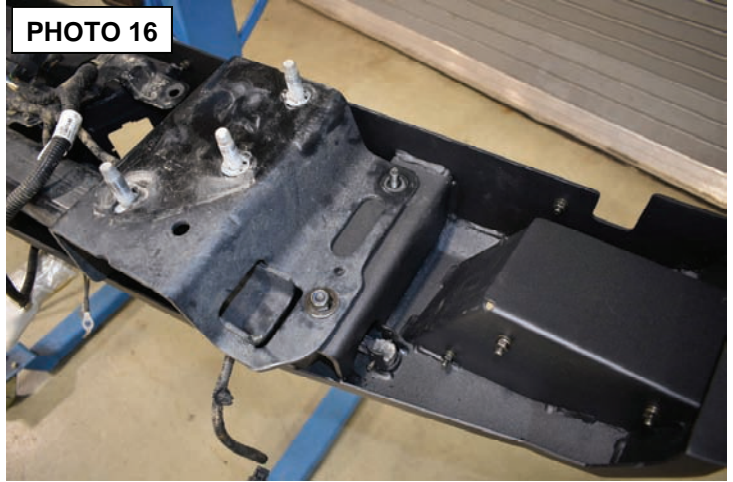


PHOTO 16



17. Install the supplied hardware to secure the hitch assembly to the rear bumper (2 each side) **See Photo 17.** Slightly tighten using a 17mm wrench. **Note:** It is recommended that the bumper hardware not be fully tightened to allow to adjust the bumper after it has been installed on the vehicle.

18. Place the plug housing in the bumper. **See Photo 18.**

PHOTO 17



PHOTO 18



19. Install the factory license plate light housings in the bumper. **See Photo 19.**

20. Install the supplied license plate inserts in the bumper. **See Photo 20.**

PHOTO 19

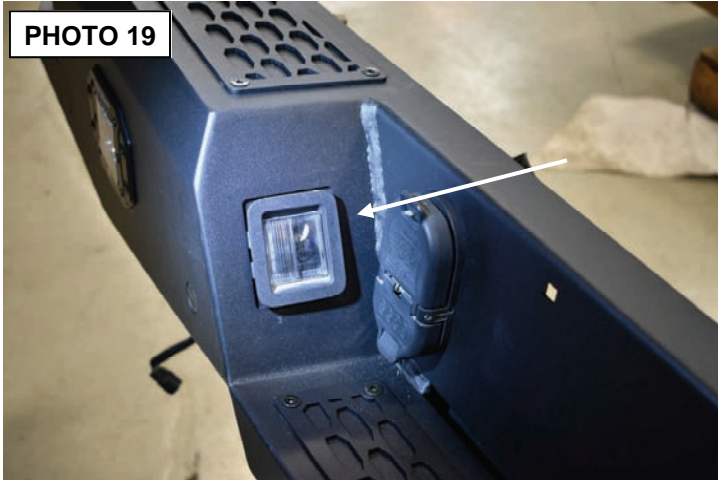
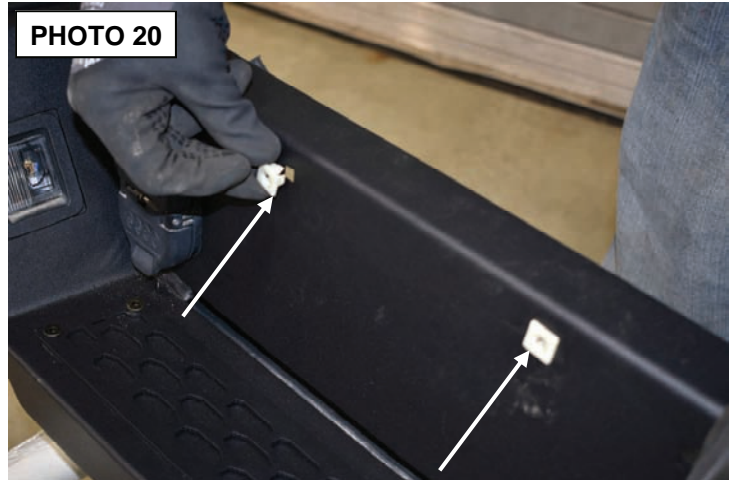


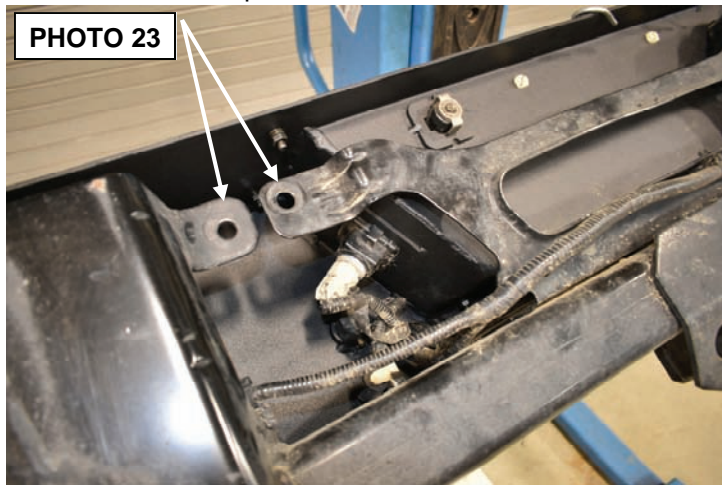
PHOTO 20



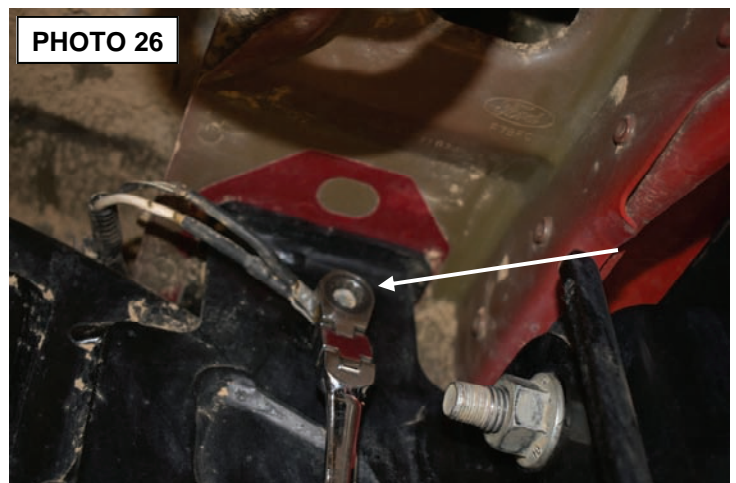
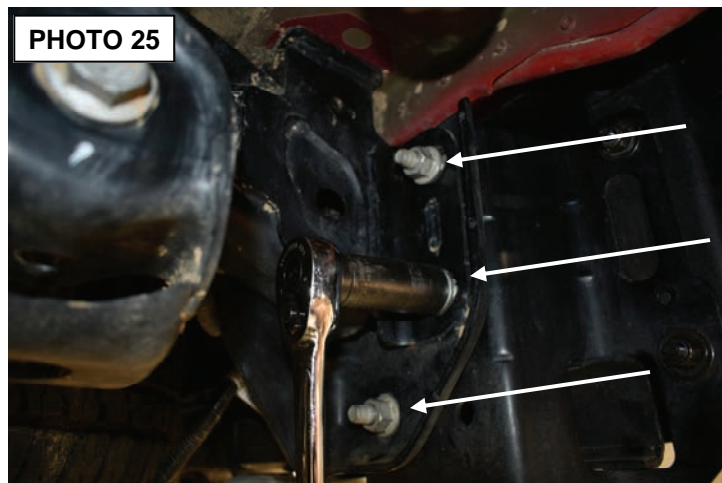
21. Install the spare tire access plug in the bumper. **See Photo 21.**
22. Re-install the wiring harness to the hitch plug housing. **See Photo 22.**



23. Reconnect the license plate lights and sensor plug if equipped. The factory holes shown (2 each side) will not be re-used to install the new bumper. **See Photo 23.**
24. Position the bumper on the vehicle. **See Photo 24.**



25. Place the factory bumper nuts on the studs and tighten using a 21mm wrench. **See Photo 25.**
26. Adjust bumper as needed and tighten the bumper bolts that were left loose in Step 16. Tighten using a 17mm after bumper has been adjusted.
27. Reinstall the ground strap as shown and tighten using a 10mm wrench. **See Photo 26.**
28. Reconnect the electrical connections to the vehicle. Ensure that all connections are tight and secure.



**NOTICE: LED light wiring will be performed referencing instructions included with those applicable kits.**

By purchasing any item sold by Rough Country, LLC, the buyer expressly warrants that he/she is in compliance with all applicable Federal, State, and Local laws and regulations regarding the purchase, ownership, and use of the item. It shall be the buyer's responsibility to comply with all Federal, State and Local laws governing the sales of any items listed, illustrated or sold. The buyer expressly agrees to indemnify and hold harmless Rough Country, LLC for all claims resulting directly or indirectly from the purchase, ownership, or use of the items.