

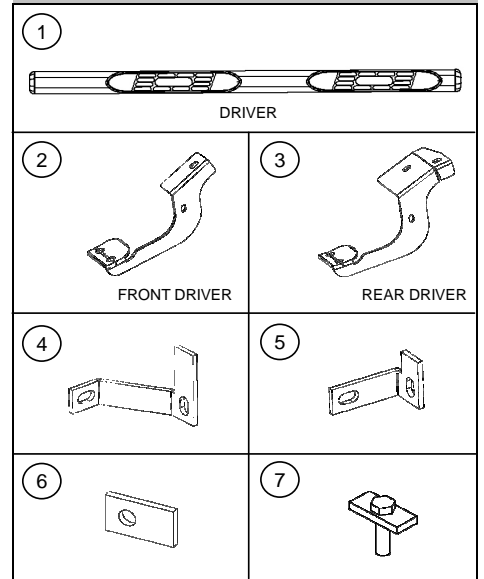
Parts List

Item	Qty.	Code	Description	Max. Torque
1	1 Set	372708AA	Side bar	-
1 Kit BRK-37270 Hardware brackets kit				-
2	1 Set	372704AA	Front bracket (driver & passenger)	-
3	1 Set	372704BA	Rear bracket (driver & passenger)	-
4	1 Set	372703AA	Auxiliary front bracket (driver & passenger)	-
5	1 Set	372703BA	Auxiliary rear bracket (driver & passenger)	-
6	4 Pc	372701AA	Fixation plate	-
7	6 Pc	371980EA	3/8" bolt plate	30 Lb.ft
1 Kit KTE-37270 Hardware bolts kit				-
8	8 Pc	-	3/8 x 1 1/2" Hex. Head bolt B. Zinc	30 Lb.ft
9	16 Pc	-	3/8" Flat washer B. Zinc	-
10	16 Pc	-	3/8" Lock washer B. Zinc	-
11	8 Pc	-	3/8 x 1" Carriage Head bolt B. Zinc	30 Lb.ft
12	8 Pc	-	3/8" Hex nut B. Zinc	30 Lb.ft
13	6 Pc	-	3/8" Flat washer Zinc plate	-
14	6 Pc	-	3/8" Lock washer Zinc plate	-
15	6 Pc	-	3/8" Hex nut Zinc plate	30 Lb.ft

Required Tools (Not included)

Qty.	Description
1	9/16" Socket & Wrench
1	Ratchet
1	Extension

Product Image



Instructions

- 1.- Before beginning the installation, please read all directions carefully and verify that all necessary hardware is accounted for. If any parts are missing, stop the installation and contact your distributor immediately.
- 2.- To maintain and care this product keep it clean and do not use abrasive cleaners or polish waxes. We recommend to use only non-abrasive automotive wax such as pure carnauba to avoid scratches and rust.
- 3.- The approximate installation time is 45 min.
- 4.- Located the holes in the lower part of the body, in the front 1 and rear 2. **SEE PICTURE 1.**

PICTURE 1.

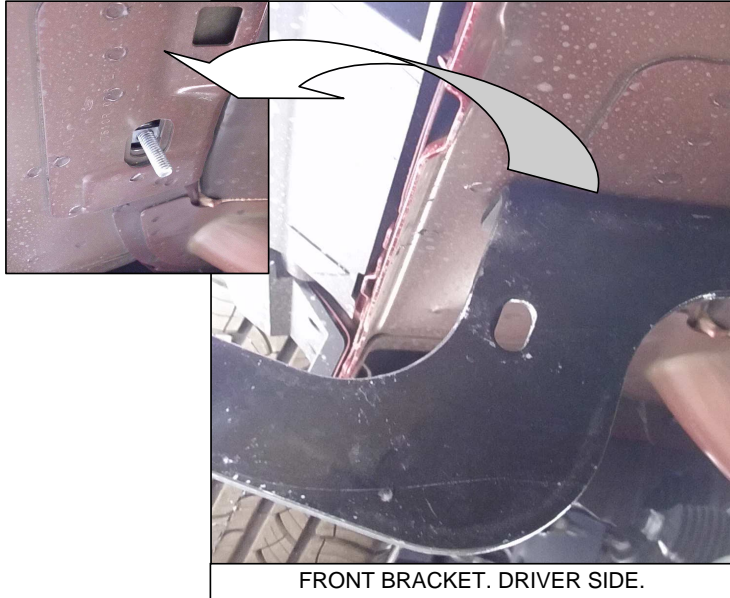


Under this part in the body install the front bracket, driver side shown.

Under this part in the body install the rear bracket, driver side shown.

5.- To install the front mounting bracket, put a 3/8" bolt plate into the front exposed hole with the threads of the bolt extending out through the hole. Place front bracket and secure using 3/8" flat and lock washers and 3/8" hex nut. Leave loose. **SEE PICTURE 2.**

PICTURE 2.



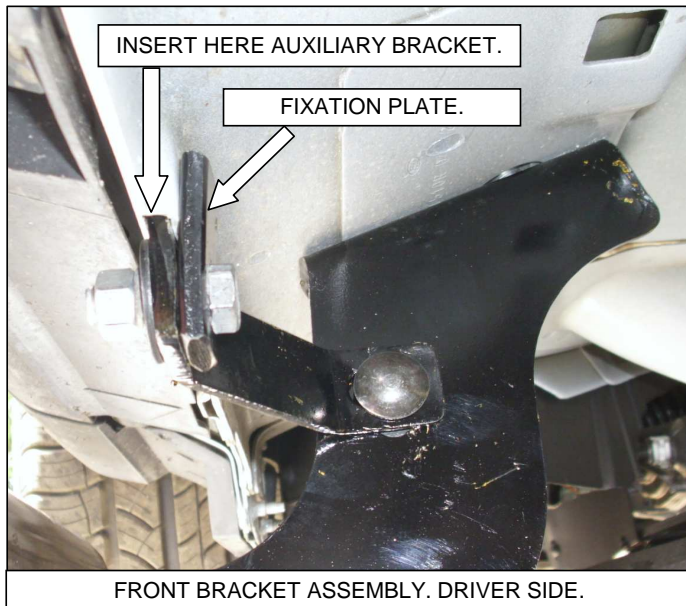
FRONT BRACKET. DRIVER SIDE.

Use 9/16" Socket, ratchet and extension.
Use 9/16" wrench.

6.- Locate the hole in the body and insert the front auxiliary bracket. The other end of the auxiliary bracket to attach the front bracket with: 3/8" carriage head bolt, 3/8" flat and lock washer, 3/8" hex nut. Leave loose.

In the insert to the body that place as reinforcement the fixation plate and attach with: 3/8" carriage head bolt, 3/8" flat and lock washer, 3/8" hex nut. Leave loose. **SEE PICTURE 3.**

PICTURE 3.

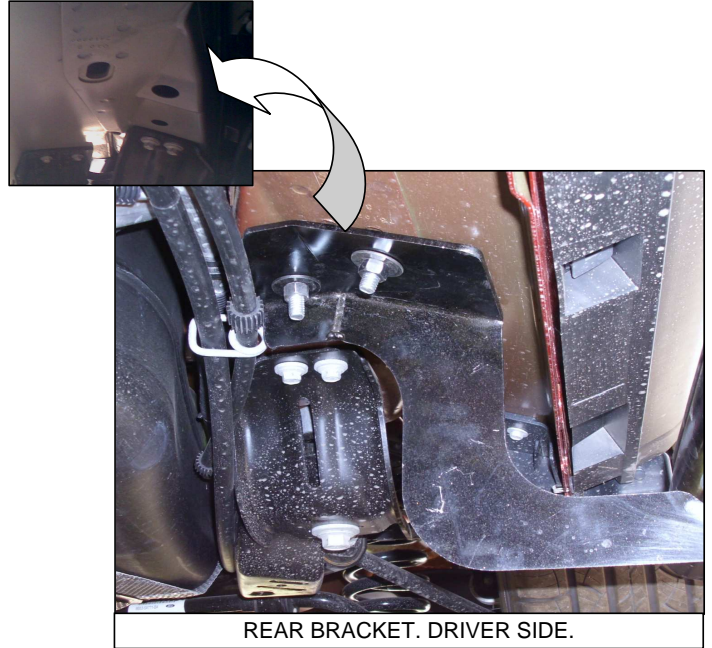


FRONT BRACKET ASSEMBLY. DRIVER SIDE.

Use 9/16" Socket, ratchet and extension.
Use 9/16" wrench.

7.- To install the rear mounting bracket, put a 3/8" bolt plate into the front exposed hole with the threads of the bolt extending out through the hole. Place rear bracket and secure using 3/8" flat and lock washers and 3/8" hex nut. Leave loose. **SEE PICTURE 4.**

PICTURE 4.



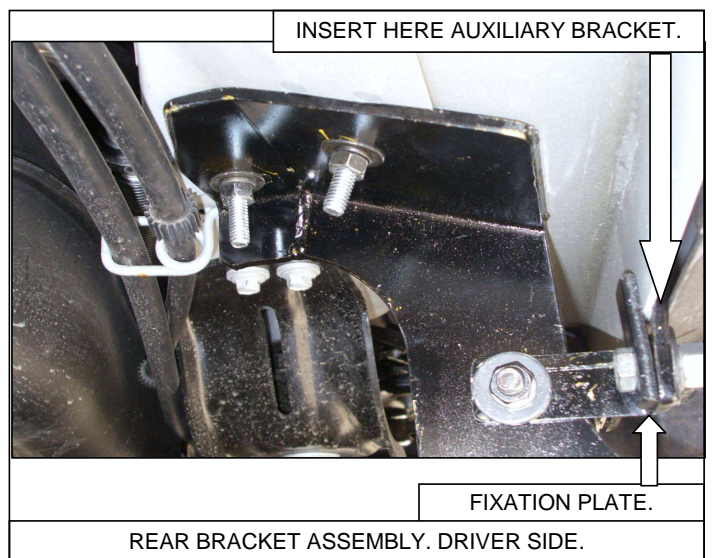
REAR BRACKET. DRIVER SIDE.

Use 9/16" Socket, ratchet and extension.
Use 9/16" wrench.

8.- Locate the hole in the body and insert the rear auxiliary bracket. The other end of the auxiliary bracket to attach the front bracket with: 3/8" carriage head bolt, 3/8" flat and lock washer, 3/8" hex nut. Leave loose.

In the insert to the body that place as reinforcement the fixation plate and attach with: 3/8" carriage head bolt, 3/8" flat and lock washer, 3/8" hex nut. Leave loose. **PICTURE 5.**

PICTURE 5.

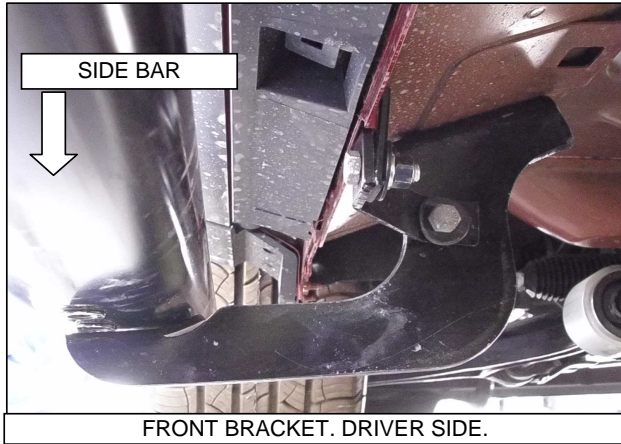


REAR BRACKET ASSEMBLY. DRIVER SIDE.

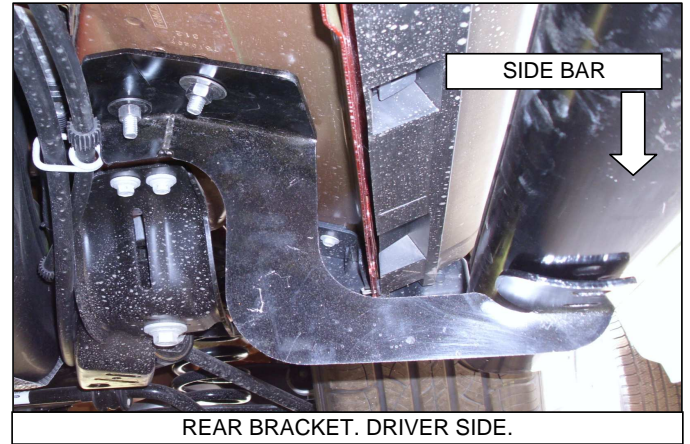
Use 9/16" Socket, ratchet and extension.
Use 9/16" wrench.

9.- Identify the driver's side bar and place it on the brackets. Attach to each bracket with 3/8 x 1 1/2" hex head bolt black zinc, 3/8" flat and lock washers black zinc. Leave loose. **SEE PICTURE 6 Y 7.**

PICTURE 6.



PICTURE 7.



Use 9/16" Socket, ratchet and extension.
Use 9/16" wrench.

10.- Align the side bar and tighten all nuts and bolts.
Repeat in opposite side.

11.- Remember to check and retighten all hardware periodically.

PICTURE 8.

