



2015-17 MK7 VOLKSWAGEN GOLF R MUD FLAP INSTALLATION INSTRUCTIONS

For high resolution color images of these instructions, please visit <http://www.rallyarmor.com>
 Check wheel clearance after installation, especially vehicles outfitted with non-OEM wheels and suspensions.

THIS APPLICATION DOES NOT FIT THE STANDARD MK7 GOLF OR GTI or MK7.5 GOLF – MK7 GOLF R ONLY

To protect your Rally Armor mud flap set, care must be taken during parking and reversing.
 Rally Armor is not responsible for damage or loss of installed flaps.



ALWAYS TEST COMPATIBILITY WITH YOUR SPECIFIC WHEEL, TIRE AND SUSPENSION COMBINATION



ALWAYS USE CAUTION DURING PARKING/REVERSAL SCENARIOS



CLEANING INSTRUCTIONS: USE WATER AND SOFT CLOTH TO CLEAN FLAPS. AVOID SOLVENT BASED CLEANERS

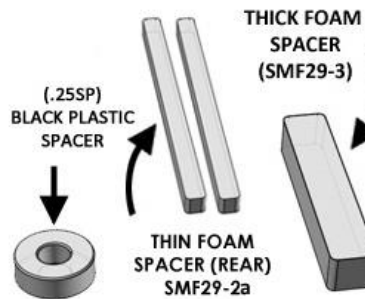


ALWAYS ALIGN YOUR MUD FLAP PERPENDICULAR TO GROUND PRIOR TO TIGHTENING

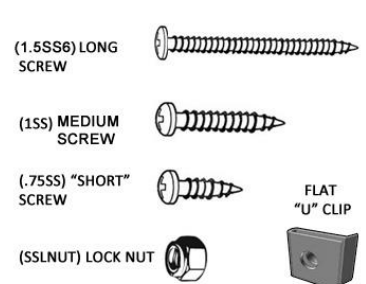
YOUR MOUNTING HARDWARE CONSISTS OF:

Quantity	Hardware Item	Item ID
4	Flat "U" Clips	UClip
12	Washers	Wash
2	Mud Flap Covers	37Cover
4	Long Screws	1.5SS6
4	Medium Screws	1 SS
4	Short Screws	.75SS
4	Lock Nuts	SSLnut
4	Round Plastic Spacers	.25 SP
2	Front Mounting Brackets	HMF37-FR-BR
2	Rear Mounting Brackets (Golf R)	HMF40-RE-BR
2	Long Foam Spacer	SMF29-2a
2	Thick Foam Spacer	SMF29-3
4	Small Washers	SS6WASH

GUIDE TO FOAM AND PLASTIC SPACERS PROVIDED:



GUIDE TO SCREWS/CLIPS PROVIDED:



Important Notes

Cautionary Tip: The hardware is strong and self-threading but over-tightening the clips is not advised.

Installation Tip: To ease installation and avoid damage to existing OEM clips during removal, a well-lit, climate controlled installation environment is recommended.

Parking and Reversing: Any extended mud flap application can be damaged or dislodged should they get caught in between a tire and a curb or object. To protect your Rally Armor mud flap set, care must be taken during parking and reversing. Rally Armor is not responsible for damage or loss of installed flaps.

CAREFULLY HAND THREAD LOCK NUTS TO BOLT FIRST TO AVOID CROSSTHREADING



A MISALIGNED NUT WILL DAMAGE OR SHEAR A BOLT TIGHTEN AFTERWARDS ONLY UNTIL SNUG
 REPLACEMENTS FOR MIS-INSTALLED, DAMAGED OR LOST HARDWARE DURING INSTALLATION
 ARE THE SOLE RESPONSIBILITY OF THE INSTALLER

Recommended tools: T25 Torx Bit, Offset, ratcheting Phillips screwdriver, 7/16" wrench.

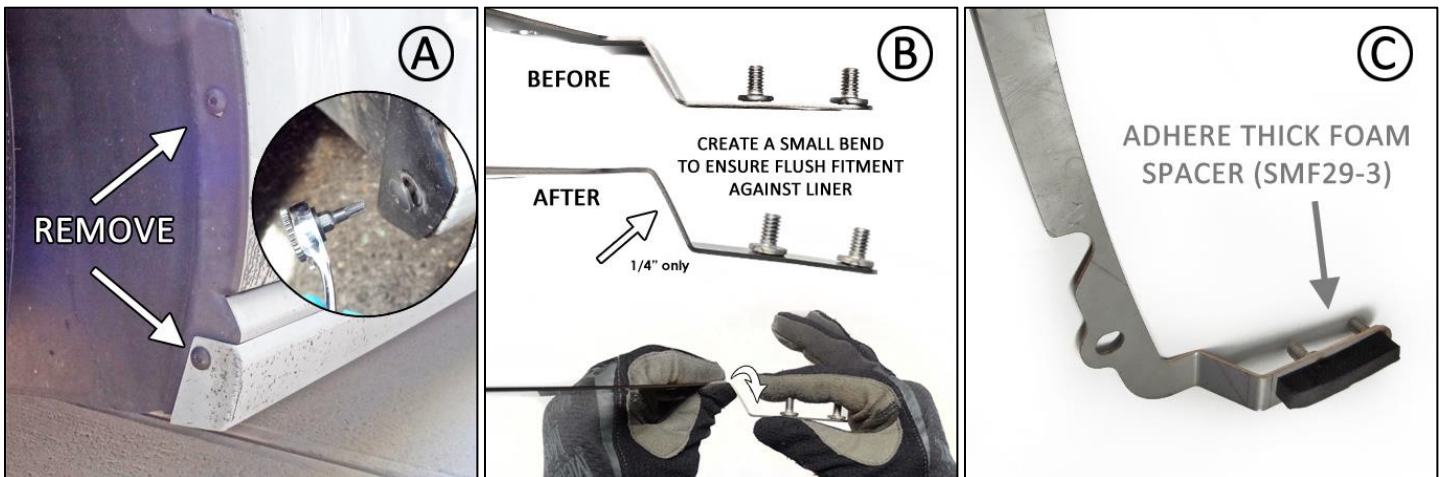
To the customer: Retain these instructions after installation. They may be necessary for installing other optional parts or removal of this accessory.

To the installer: Please return these instructions to the customer after installation. Always test and adjust wheel clearance before returning vehicle.

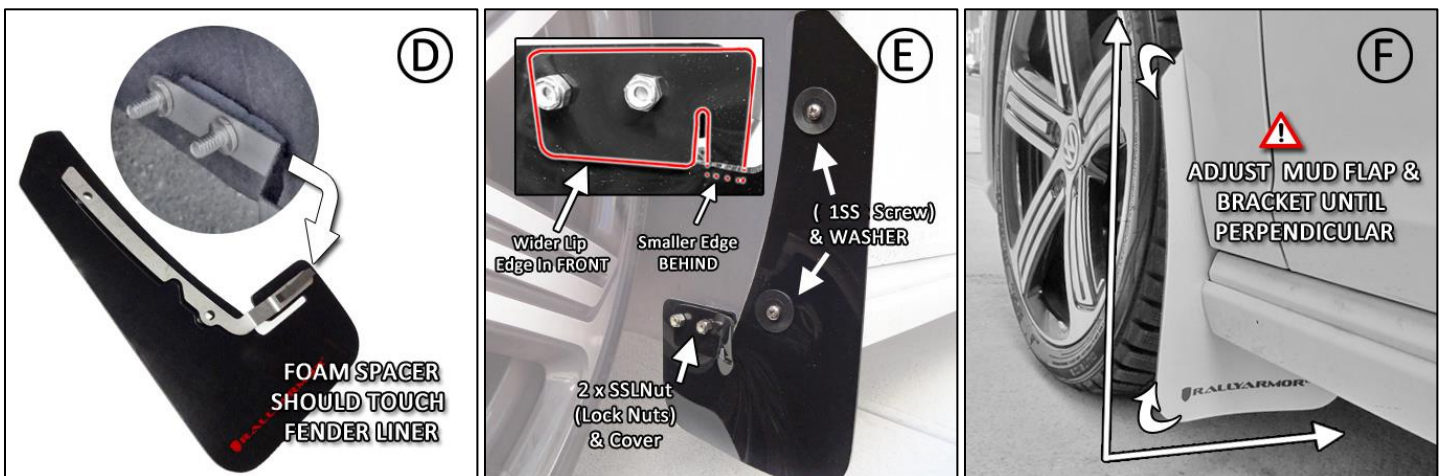
IMF40

Front Mud Flap Installation

- **(Figure A)** Park vehicle on an even surface. Turn the steering wheel towards the side you are working on. Remove the two outer fender liner screws with a T-25 Torx bit.
- **(Figure B)** Hold the front bracket with the studs facing away from you. **Slightly** bend the portion with the two studs back no more than a 1/4" (6mm) as shown. **Do not over bend.** This operation will allow it to conform to a variety of fender liners and can be easily adjusted any time during your installation.
- **(Figure C)** Adhere the **THICK** foam spacer (SMF29-3) behind the area where the two studs are located on the front bracket as shown.



- **(Figure D)** Place the front bracket against logo side of the front mud flap, match the mounting points /studs to the corresponding areas of the flap & vehicle. Foam spacer should touch fender liner. You can repeat and adjust Figure B if needed.
- **(Figure E)** Insert the two bracket studs through the inner mounting points on the mud flap. Place the mud flap cover over the studs and mud flap. Wide lip edge is in front of the mud flap, smaller edge is behind. **Loosely thread locknuts** (SSLnut) over the studs. The foam spacer should be touching your fender liner. Install a 1SS (Medium) Screw and Washer on the two outer mounts.
- **(Figure F)** Align outer edge of the flap by incrementally adjusting the assembly side to side, as well as the lower & upper portions of the flap. Check your adjustment, and confirming the flap is perpendicular to even ground. Tighten all mounting screws until they are seated. **Do not over tighten.**



IMF40

Rear Mud Flap Installation

- **(Figure G)** There are three screws in this area. Remove only the **two outer** T-25 Torx screws.
- **(Figure H)** Note rear brackets. You will slightly bend each bracket to match the side you are installing them on.
- **(Figure I)** Create a slight arc to the bracket by placing your thumbs above and below the center mounting points and gently bending. You can place the side of the bracket against the line in Figure I-A as a general guide and adjust as needed as you install on the vehicle. The operation you are performing will assist the mud flap to follow the curvature of your wheel well.

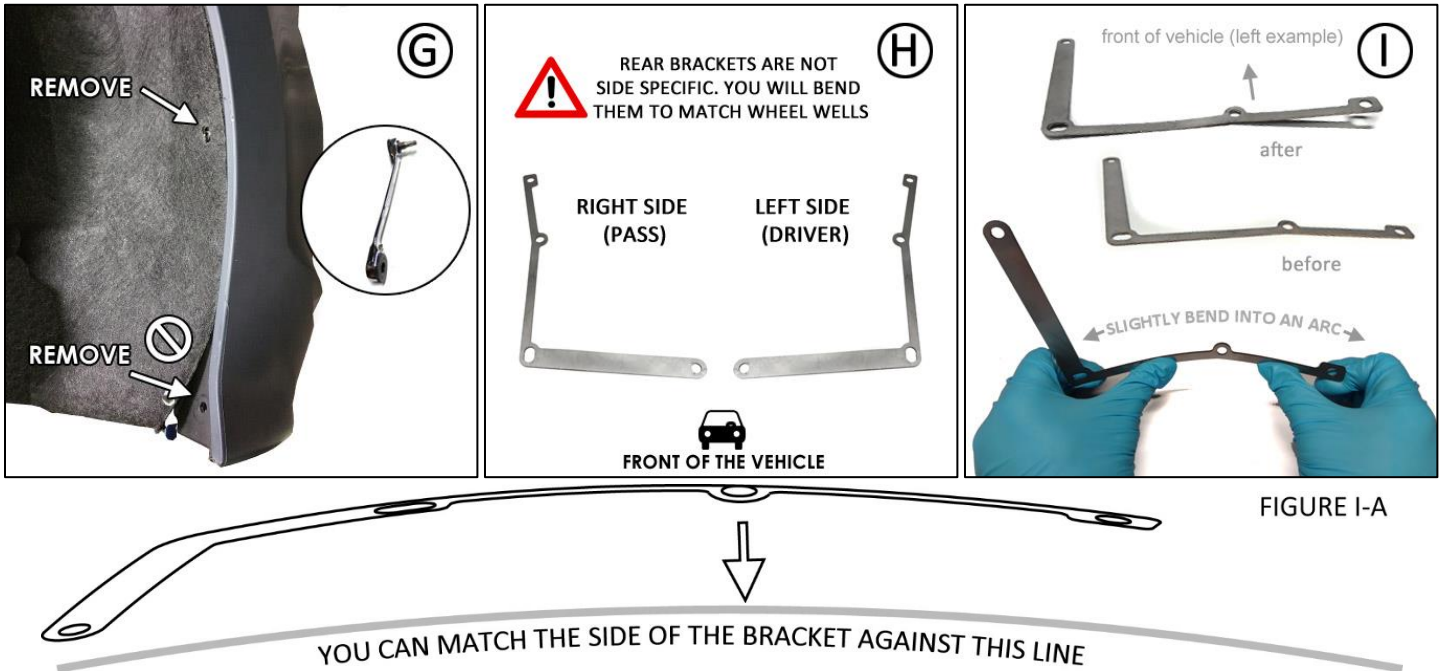
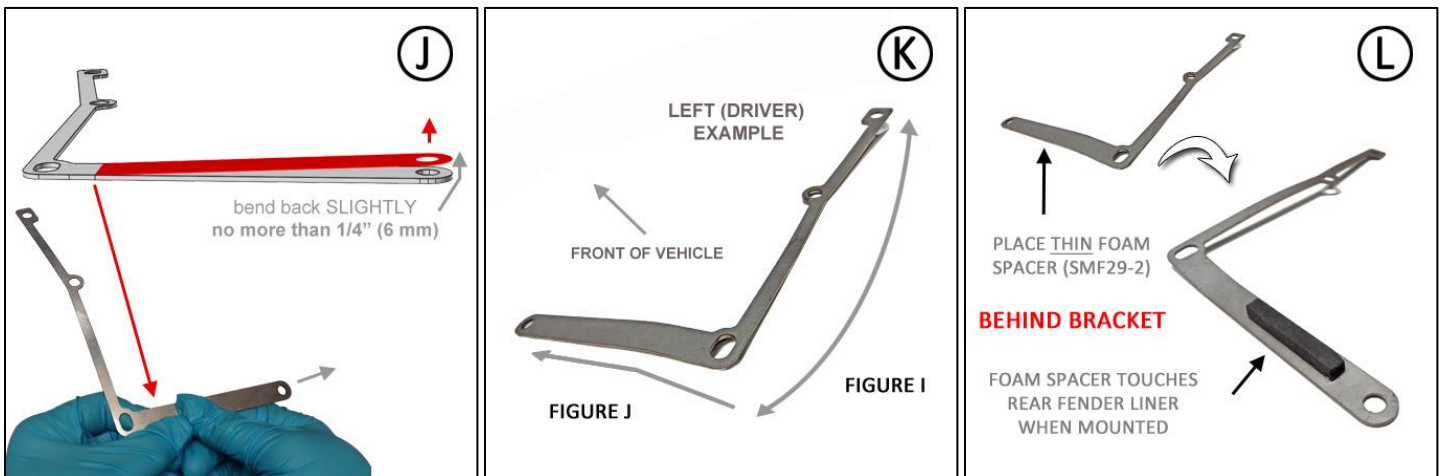


FIGURE I-A

- **(Figure J)** Bend the lower portion of the bracket towards the rear of the vehicle slightly back approximately 1/4" (10-12 mm) as per the diagram. You can also adjust as needed as you install on the vehicle.
- **(Figure K)** Note the two bends you have created.
- **(Figure L)** Place a THIN foam spacer (SMF29-2a) behind bracket as shown. This foam spacer should be touching your fender liner when installed on the vehicle.

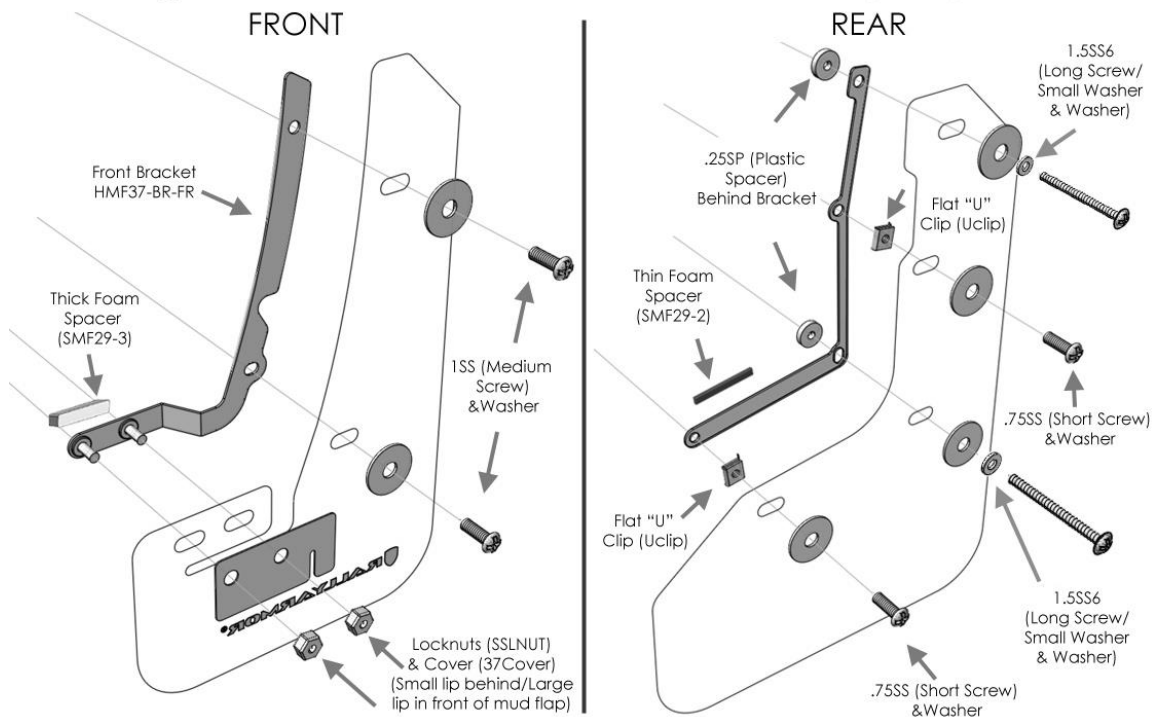


IMF40

- **(Figure M)** Place flat U clip (UClip) over each of the center and end mounting points of the bracket as shown. Insert a large washer, and stainless screw (1.5SS6) **and small washer** (SS6WASH) (not visible on this image) through each of the two open mud flap/bracket mounting points, and a small spacer over on the bracket side as shown.
- **(Figure N)** Thread each of the screws through the original T-25 mounting locations. Do not fully tighten. Place a short screw in the center and end mounting points into the flat U Clip. **Do not fully tighten. You will be adjusting the flap.** The foam originally placed on the lower rear section of the bracket should touch the fender liner. Adjust by repeating **Figure J** as needed.
- **(Figure O)** Align outer edge of the flap by incrementally adjusting the assembly side to side, as well as the lower & upper portions of the flap. Align spacer so it is vertical via the opening on the side. Check your adjustment, and confirming the flap is perpendicular to even ground. **Tighten all mounting screws and locknuts only until snug against washer. Do not over tighten.** You can adjust the mounting against the bumper edge by repeating figures I and J on the bracket as needed.



RALLYARMOR® HMF40 Mounting Diagram



Check wheel clearance after installation, especially on vehicles outfitted with non-OEM offset wheels and suspensions. Adjust to accommodate accordingly in these scenarios. Rally Armor is not responsible for damage or loss of installed flaps.

All content included on these instructions is the copyright of Rally Armor® LLC