




## 2015+ POLARIS SLINGHOT FRONT MUD FLAP INSTALLATION INSTRUCTIONS

For high resolution color images of these instructions, please visit <http://www.rallyarmor.com>

Check wheel clearance after installation, especially vehicles outfitted with non-OEM wheels and suspensions.

**⚠ RALLY ARMOR IS NOT RESPONSIBLE FOR DAMAGE OR LOSS OF INSTALLED FLAPS. ⚠**

**Recommended tools:** Stubby Philips Screw Driver, Drill, Drill Bit Assortment (5/32" /4mm drill bit)

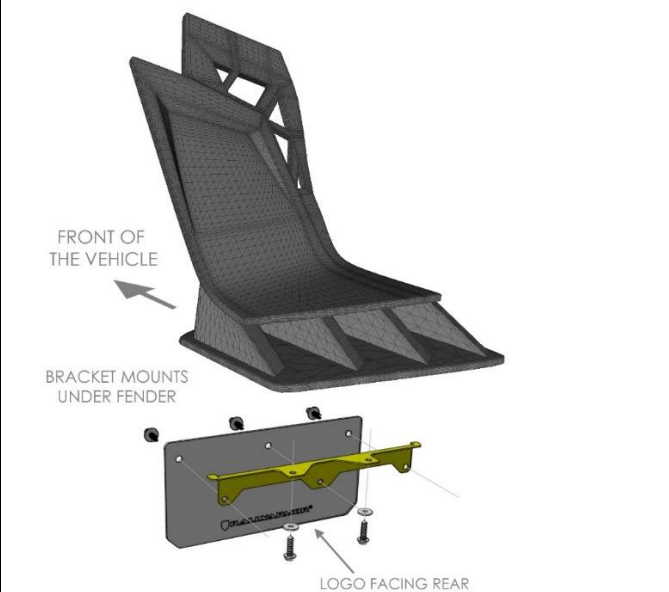
 <b>Important Notes</b>		
YOUR POLARIS SLINGHOT FRONT MUD FLAP HARDWARE CONSISTS OF:		
Quantity	Hardware Item	Item ID
2	Front brackets	HMF38-FR-BR
6	Plastic Inserts	Ins8
4	Black Short Screws	.50BLKSCRW
4	Washers	SmWash

**Cautionary Tip:** The hardware is strong and self threading but over-tightening the screws into their mounting location is not advised. Tighten only until assembly is seated against the fender.

**Installation Tip:** To ease installation a well-lit, climate controlled installation environment is recommended.

**To the installer:** Please return these instructions to the customer after installation. Always test and check wheel clearances before returning vehicle.

**To the customer:** Retain these instructions after installation. They may be necessary for installing other optional parts or removal of this accessory.



## INSTALLATION INSTRUCTIONS

Installation can be performed from directly under the vehicle. Corresponding installation pictures can be found on the next page.

*Note: Light bracket and hardware is shown in the installation instructions for ease of viewing.*

**Standard bracket is powder coated black. Mounting screws included with your set are black.**

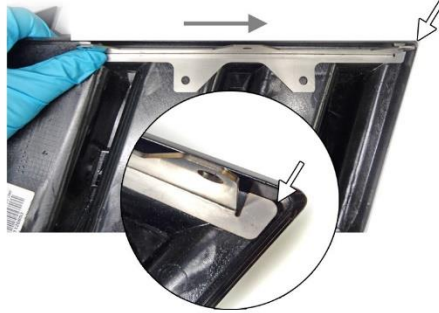
1. This is the view of the fender from underneath the vehicle. You will be aligning the edge of the bracket with the outer edge of the fender as shown.
2. Place bracket against the fender bottom, slide until the edges of the bracket and the fender meet in the corner.
3. Mark the two mounting points.
4. Remove bracket.
5. Create a small pilot hole on your markings, and carefully drill using a 5/32" (4mm) drill bit no more than 1/2" deep. You can use tape around the bit as a depth guide.
6. Attach the mud flap to the bracket using INS8. Remove pin, place insert flat against mud flap/bracket. Replace pin to lock in place.
7. Ensure the logo faces the rear of the vehicle.
8. Place a washer and short screw through each of the two mounting points. Hand tighten only until seated. Do not overtighten screws
9. Repeat the process for the other side to complete your installation.

# IMF38

1. BOTTOM VIEW OF FENDER



2. ALIGN EDGE OF BRACKET TO FENDER EDGE/LIP



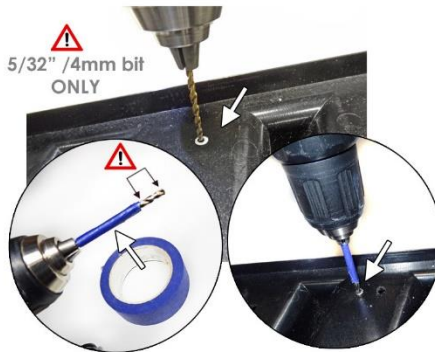
3. MARK TWO MOUNTING HOLES



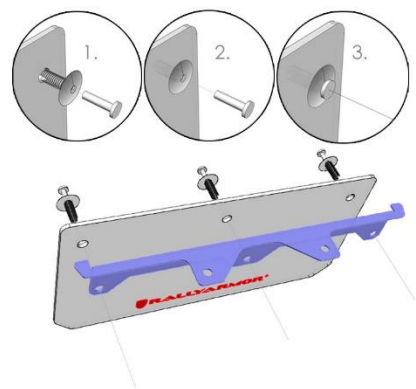
4. REMOVE BRACKET



5. CREATE SMALL PILOT HOLE FIRST THEN EXPAND WITH A 5/32" (4MM) DRILL BIT. DO NOT DRILL THROUGH THE FENDER. 1/2" DEEP MAX



6. ATTACH MUD FLAP TO BRACKET WITH INS8



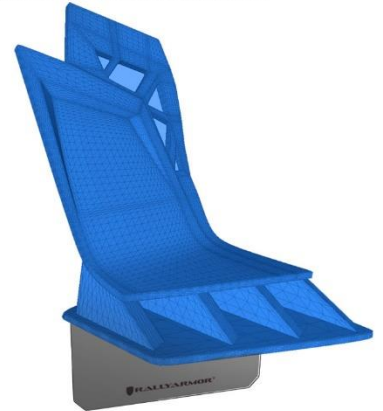
7. LOGO FACES REAR OF VEHICLE



8. TIGHTEN WASHER/ SCREW MUDFLAP/BACKET ASSEMBLY BY HAND ONLY UNTIL WASHER IS SEATED



9. REPEAT PROCESS FOR THE OTHER SIDE



**Rally Armor is not responsible for damage or loss of installed flaps.**

All content included on these instructions is the copyright of Rally Armor® LLC