

2022+ Hyundai Santa Cruz Installation Instructions

View instructions and photos online

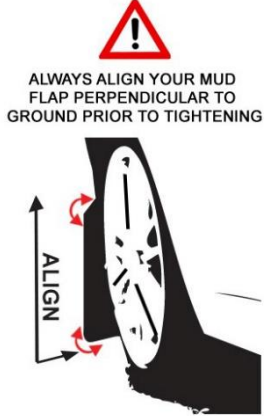
CARE AFTER INSTALLATION Once installed, vehicle owner is responsible for condition of mud flaps and all costs associated with replacing damaged or lost parts. Warranty covers manufacturer defect on new, never installed parts.

⚠ Watch for blind spots when parking ⚠ Avoid contact with curbs and objects that compress flaps with excessive force. Check wheel clearances, especially on vehicles equipped with aftermarket wheels and suspensions.

QUESTION ON INSTALLATION? CONTACT www.rallyarmor.com/support

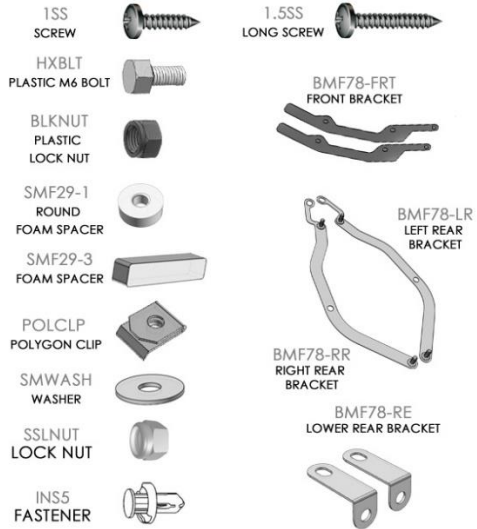
NEED TO PURCHASE REPLACEMENT PARTS? SEND RECEIPT OR PHOTO OF MUD FLAPS TO www.rallyarmor.com/support

IMPORTANT NOTES



INSTALLATION KIT CONTENTS

QUANTITY	PART	ITEM ID
4	SCREW	1SS
2	LONG SCREW	1.5SS
4	PLASTIC BOLT	HXBLT
4	PLASTIC LOCK NUT	BLKNUT
4	ROUND FOAM SPACER	SMF29-1
2	FOAM SPACER	SMF29-3
6	POLYGON CLIP	POLCLP
18	WASHER	SMWASH
4	LOCK NUT	SSLNUT
2	FASTENER	INS5
2	FRONT BRACKETS	BMF78-FRT
1	LEFT REAR BRACKET	BMF78-LR
1	RIGHT REAR BRACKET	BMF78-RR
2	LOWER REAR BRACKET	BMF78-RE



Recommended Tools Low-profile offset or ratcheting screw driver, 7/16th wrench, flathead screwdriver.

Important Tips Installation should be done on an even surface. Do not use power tools to tighten hardware. Hand tools only. Avoid overtightening.

RALLY ARMOR - A BIT ABOUT OUR STANDARD IN MUD FLAPS

Rally Armor mud flaps are fabricated from a high grade polyurethane plastic that is rigorously reviewed for quality and consistency. As with all manufacturing processes, controlled conditions and multiple QC checkpoints minimize major irregularities, however certain very minor surface layer marks appear periodically. These are visual variations that do not affect construction nor do they impede the performance of the flaps. Most matte away as the material ages naturally with continued exposure to the outdoors. Each flap is unique in appearance yet all are equally structurally sound.

2022+ Hyundai Santa Cruz Installation Instructions

FRONT MUD FLAP

Bracket & Hardware 1 x Front Flap → 2 x 1SS; 1 x BLKNUT; 1 x BMF78-FRT; 1 x HXNUT; 2 x POLCLP; 2 x SMF29-1; 4 x SMWASH

Turn the steering wheel towards the side you are working on to gain access to the inner wheel well area.

FIGURE A Remove factory liner fasteners. Pull liner away from fender.

FIGURE B Install POLCLP over upper and lower fender mounting points. Reinstall liner.

FIGURE C Affix SMF29-1 ROUND FOAM SPACER over each mounting point.

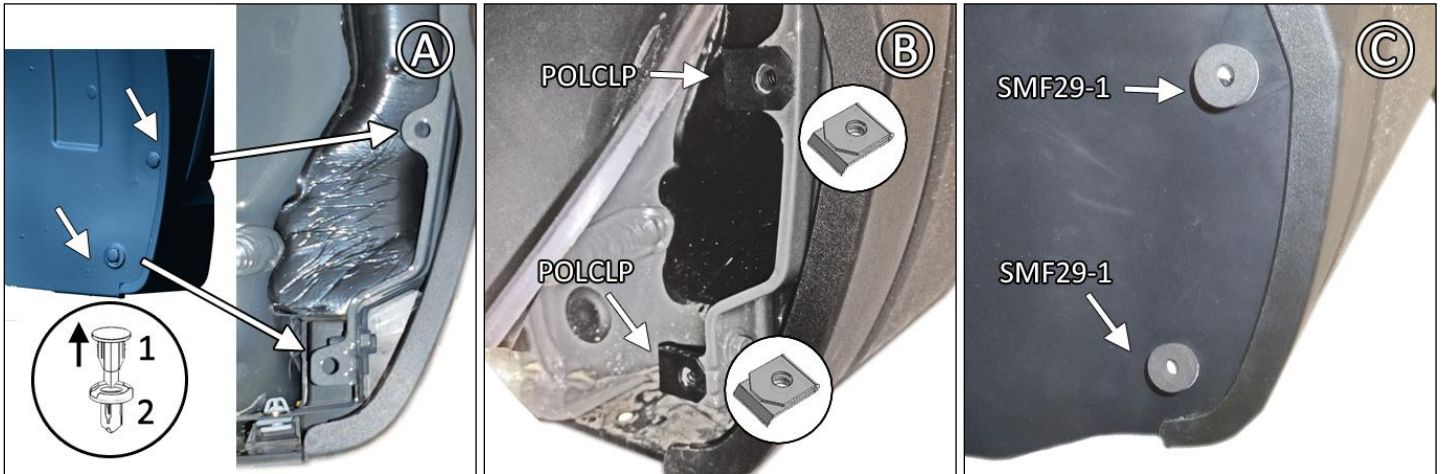
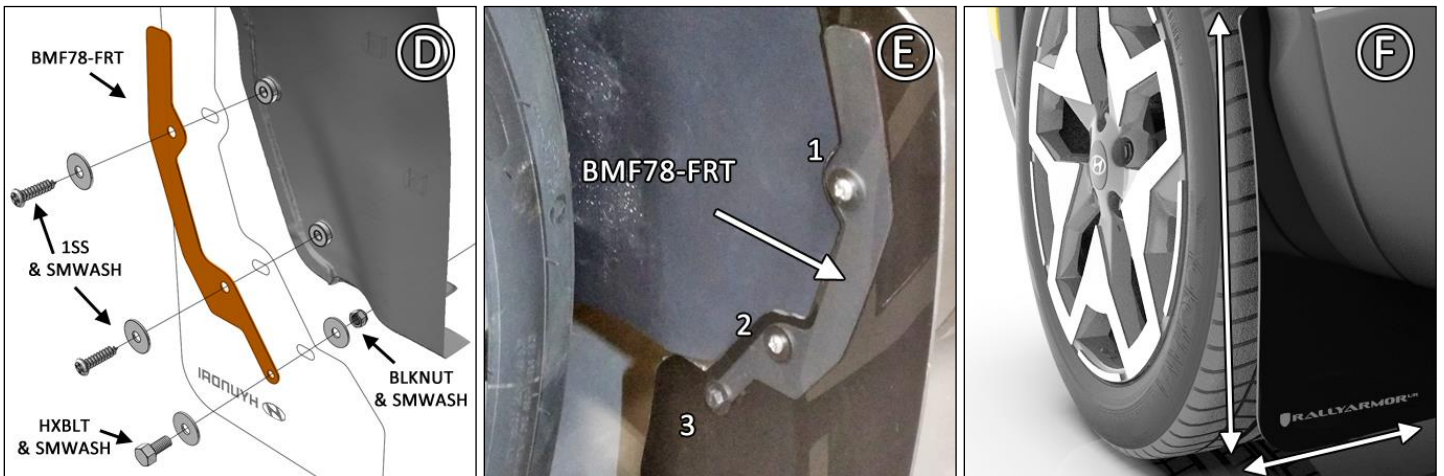


FIGURE D/E Place logo-side of mud flap facing rear of the vehicle against mounting points on liner. Position BMF78-FRT bracket OVER mud flap. Use WASHER SMWASH & SCREW 1SS to fasten points 1 & 2. Use a SMWASH & HXBLT and BLKNUT & SMWASH BEHIND mud flap for lower mounting point #3.

FIGURE F Ensure mud flap is parallel to even ground. Hand tighten only until washers seated against flap. **Adjust as needed.**



2022+ Hyundai Santa Cruz Installation Instructions

REAR MUD FLAP

Bracket & Hardware 1 x Rear Flap → 1 x 1.5SS; BM78-LR/RR; BMF78-RE; 1 x INS5; 1 x ORIGINAL OEM FASTENER; 1 x POLCLP; 1 x SMF29-3; 5 x SMWASH; 2 x SSLNUT; 1 x HXBOLT; 1 x BLKNUT

FIGURE G Remove factory 1, 2 and 3 liner fasteners. Retain OEM fastener #1 as it will be re-used. Install POLYGON CLIP over lower mounting hole.

FIGURE H Install bracket BMF70-RE with INS5 insert.

FIGURE I Adhere SMF29-3 to REAR BRACKET.

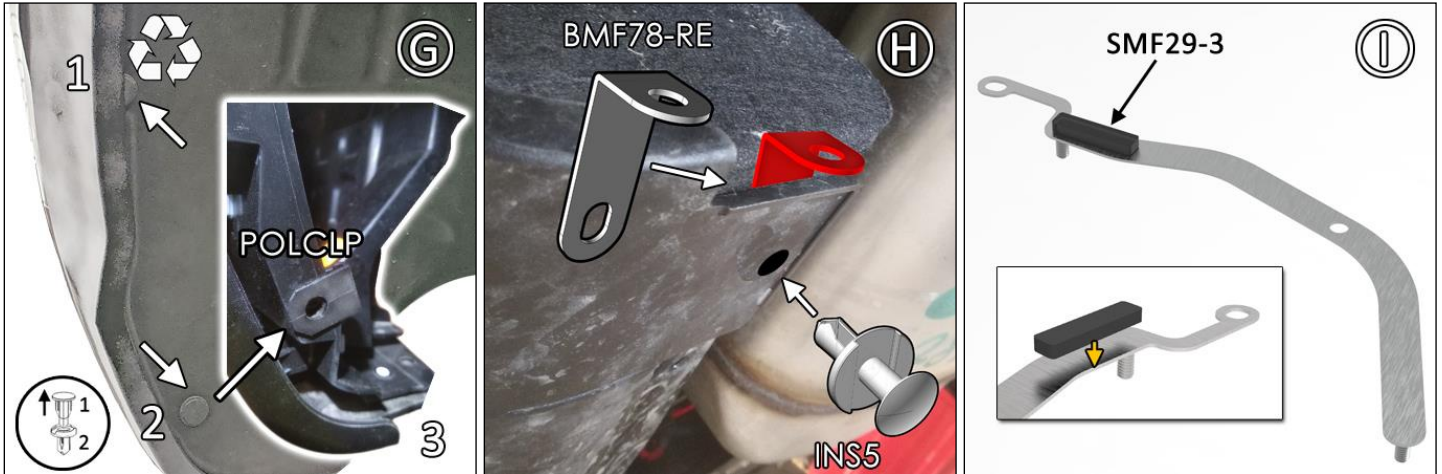
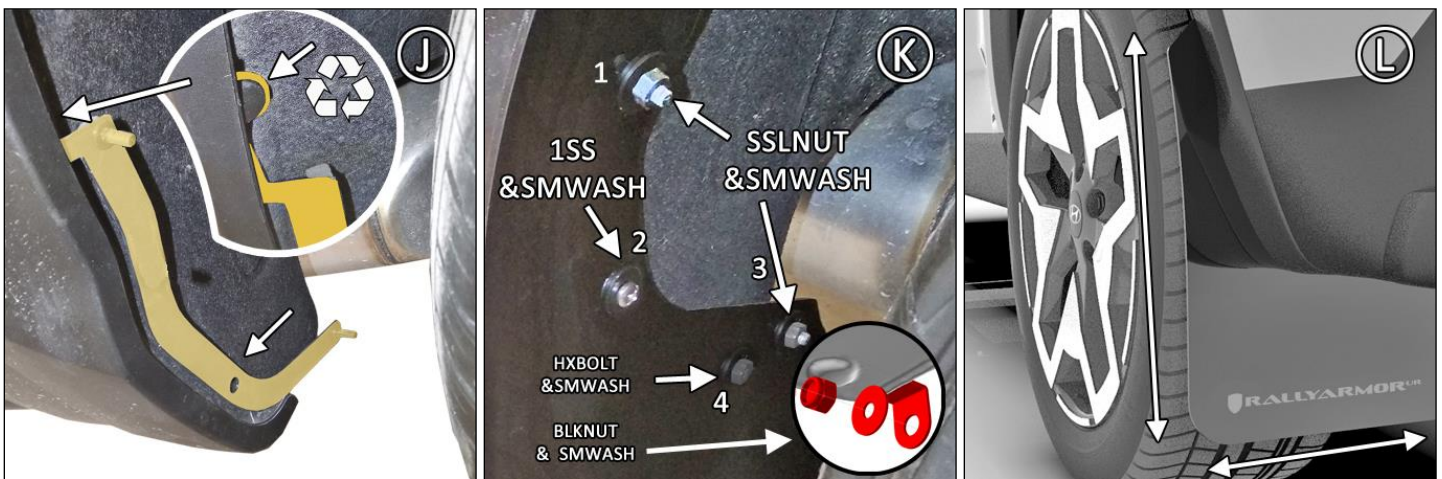


FIGURE J Install upper mounting point of bracket to liner with original fastener. Curve upper portion of bracket as needed.

FIGURE K Place logo-side of mud flap facing rear of the vehicle against corresponding mounting points. Use WASHER & LOCK NUT SSLNUT to fasten points 1 & 3. Use SMWASH & 1.5SS Screw for mounting point #2. Secure flap to BMF78-RE with HXBOLT and SMWASH in the front, and BLKNUT and SMWASH in the rear.

FIGURE L Adhere SMF29-3 to REAR BRACKET. Ensure mud flap is parallel to even ground. Hand tighten only until washers seated against flap. **Adjust as needed.**



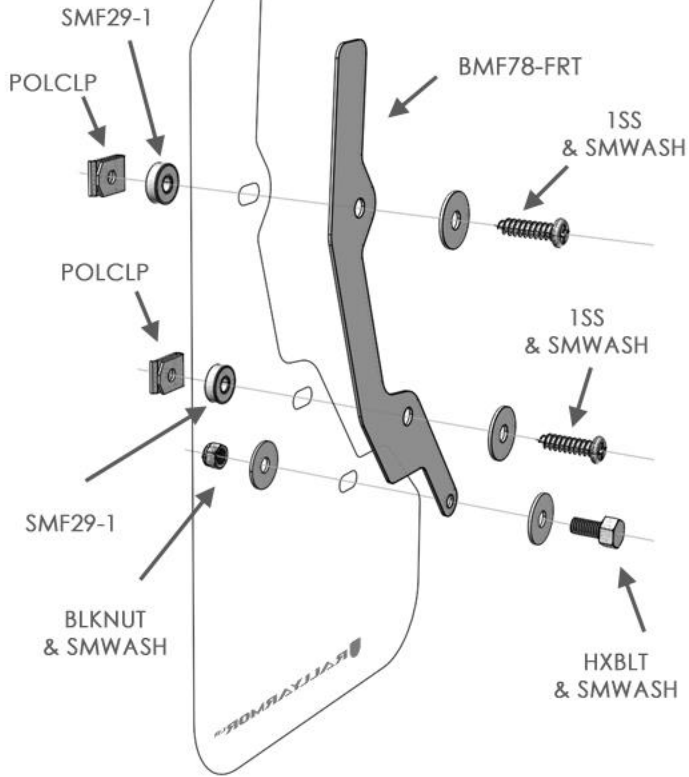
IMF78



2022+ Hyundai Santa Cruz Installation Instructions

RALLYARMOR[®] MF78 MOUNTING DIAGRAM

FRONT



REAR

