

2020+ Toyota GR Yaris Mud Flap Installation Instructions

View instructions and photos online www.rallyarmor.com

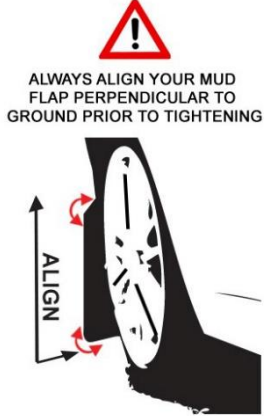
CARE AFTER INSTALLATION Once installed, vehicle owner is responsible for condition of mud flaps and all costs associated with replacing damaged or lost parts. Warranty covers manufacturer defect on new, never installed parts.

⚠ Watch for blind spots when parking ⚠ Avoid contact with curbs and objects that compress flaps with excessive force. Check wheel clearances, especially on vehicles equipped with aftermarket wheels and suspensions.

QUESTION ON INSTALLATION? CONTACT www.rallyarmor.com/support

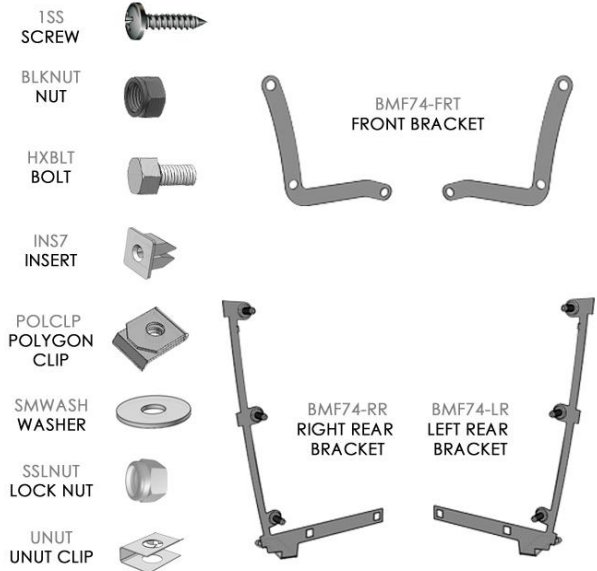
NEED TO PURCHASE REPLACEMENT PARTS? SEND RECEIPT OR PHOTO OF MUD FLAPS TO www.rallyarmor.com/support

IMPORTANT NOTES



INSTALLATION KIT CONTENTS

QUANTITY	PART	ITEM ID
10	SCREW	1SS
2	NUT	BLKNUT
2	BOLT	HXBLT
4	INSERT	INS7
4	POLYGON CLIP	POLCP
22	WASHER	SMWASH
6	LOCK NUT	SSLNUT
6	UNUT CLIP	UNUT
2	BRACKET FRONT	BMF74-FRT
1	BRACKET LEFT REAR	BMF74-LR
1	BRACKET RIGHT REAR	BMF74-RR



Recommended Tools Low-profile offset or ratcheting screw driver, 7/16th wrench, flathead screwdriver.

Important Tips Installation should be done on an even surface. Do not use power tools to tighten hardware. Hand tools only. **Avoid overtightening.**

RALLY ARMOR - A BIT ABOUT OUR STANDARD IN MUD FLAPS

Rally Armor mud flaps are fabricated from a high grade polyurethane plastic that is rigorously reviewed for quality and consistency. As with all manufacturing processes, controlled conditions and multiple QC checkpoints minimize major irregularities, however certain very minor surface layer marks appear periodically. These are visual variations that do not affect construction nor do they impede the performance of the flaps. Most matte away as the material ages naturally with continued exposure to the outdoors. Each flap is unique in appearance yet all are structurally sound.

2020+ Toyota GR Yaris Mud Flap Installation Instructions

FRONT MUD FLAP

1 Front Flap Bracket & Hardware → 1 x BMF74-FRT; 3 x 1SS; 1 x BLKNUT; 1 x HXBLT; 2 x POLCLP; 6 x SMWASH

To access inner wheel well area, turn steering wheel towards installation side.

FIGURE A Remove factory fasteners 2 - 4. Temporarily remove factory 1 and underbody, lower fasteners. Move liner away from fender.

FIGURE B Install POLCLP over mounting points 3 and 4.

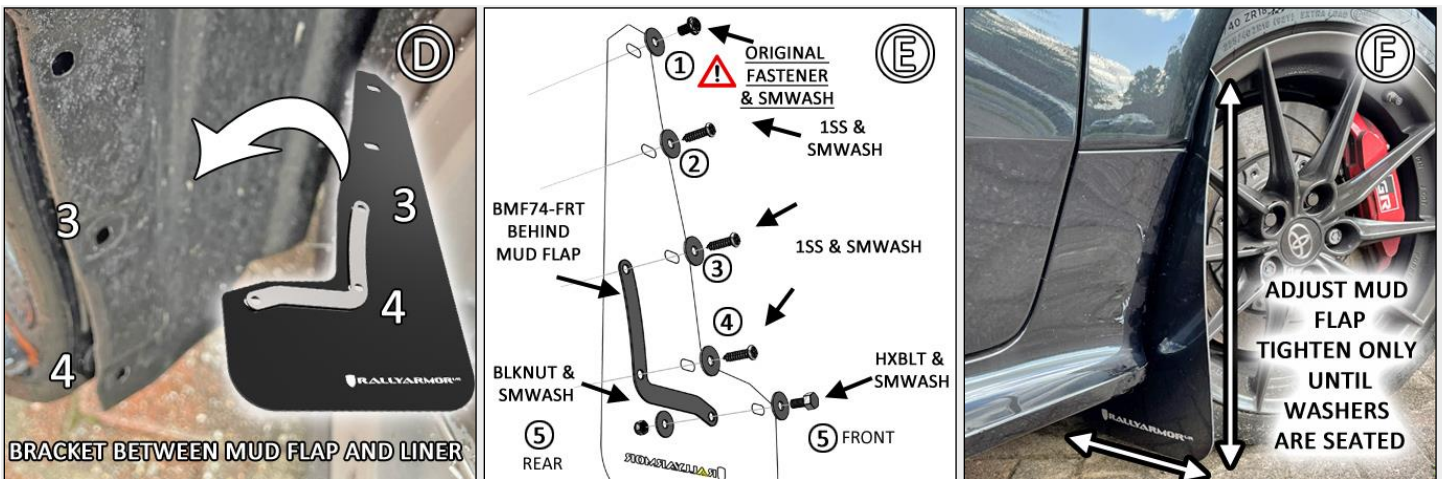
FIGURE C Replace liner. Reinstall lower factory fastener.



FIGURE D Position BMF74-FRT bracket onto mud flap points 3 and 4 then place flap, logo-side facing rear of vehicle, against liner points 3 and 4.

FIGURE E Tightening just enough to adjust flap later, place factory fastener 1 through SMWASH and mud flap to secure mounting point 1. Use 1SS and SMWASH to fasten mounting points 2 - 4. Install HXBLT and SMWASH through point 5. Secure the rear or opposite side of mount 5 with BLKNUT and SMWASH.

FIGURE F Ensure mud flap is parallel to even ground. Hand-tighten washers just enough to seat against flap. Adjust as needed.



2020+ Toyota GR Yaris Mud Flap Installation Instructions

REAR MUD FLAP

1 Rear Flap Bracket & Hardware → 1 x BMF74-LR/RR; 2 X 1SS; 2 X INS7; 5 x SMWASH; 3 x SSLNUT; 3 x UNUT

Though not required, tire removal eases installation. Option 2, jack rear of vehicle to better access wheel well area.

FIGURE G Remove rear liner fasteners. Pull liner away from bumper.

FIGURE H Install INS7 into both square mounting points of bracket. Gently curve bracket 1 - 2mm, shaping it so it nests against liner.

FIGURE I Position low end of bracket over liner mounting hole. Align upper bracket tab against liner.

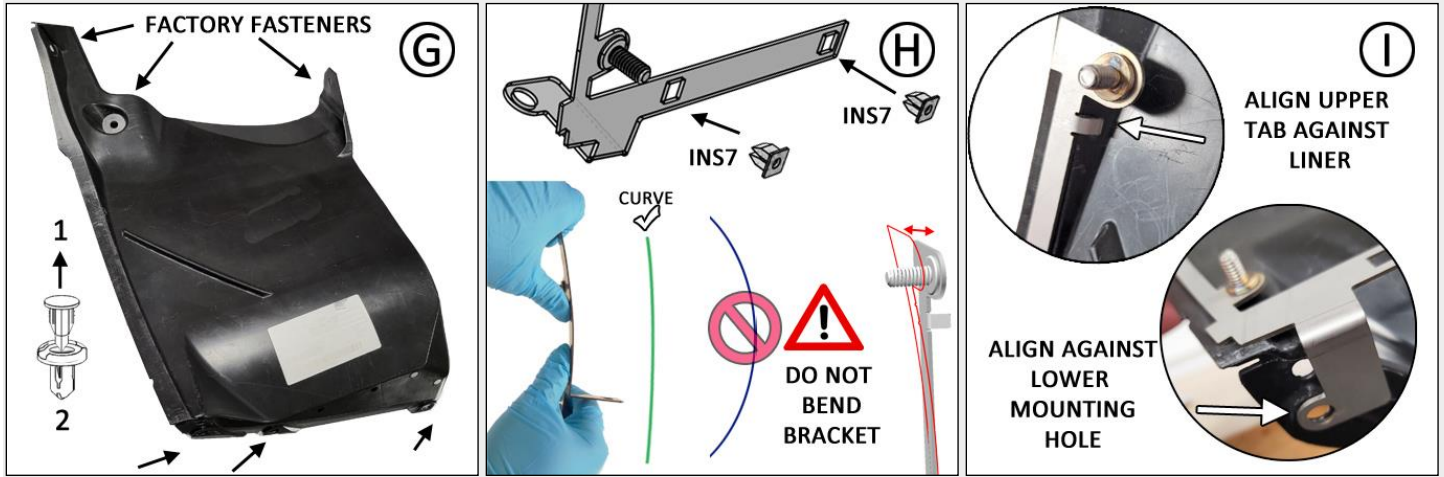


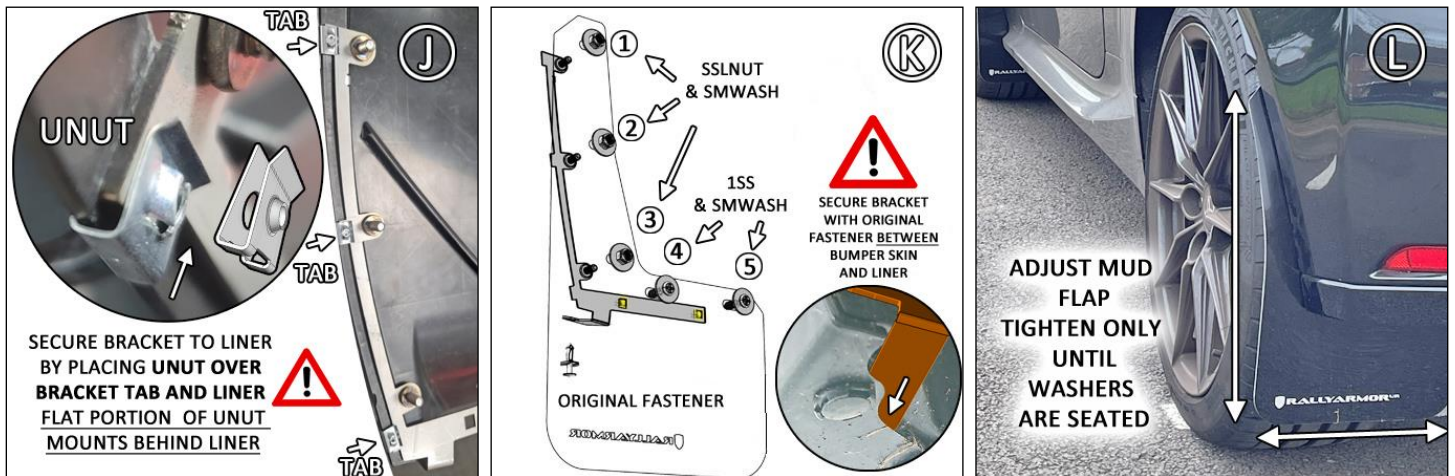
FIGURE J Clip a UNUT over each of the 3 tabbed sections of bracket and liner. Flat side of UNUT faces rear of liner.

FIGURE K Reinstall liner. Position low end of bracket between bumper skin and liner. Bracket does not mount outside bumper skin.

Install original factory fastener.

Tightening just enough for adjustments later, position mud flap against corresponding bracket mounting points 1 – 3, then fasten using SSLNUT and SMWASH. Use 1SS and SMWASH for points 4 and 5.

FIGURE L Ensure mud flap is parallel to even ground. Hand-tighten washers just enough to seat against flap. Adjust as needed.



IMF74



2020+ Toyota GR Yaris Mud Flap Installation Instructions

FRONT



REAR

MF74 MOUNTING DIAGRAM

