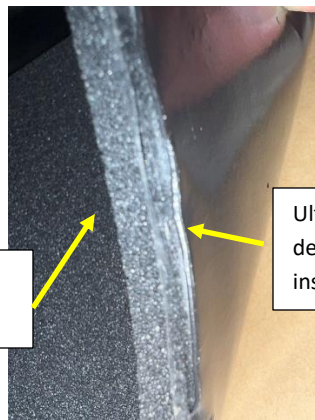


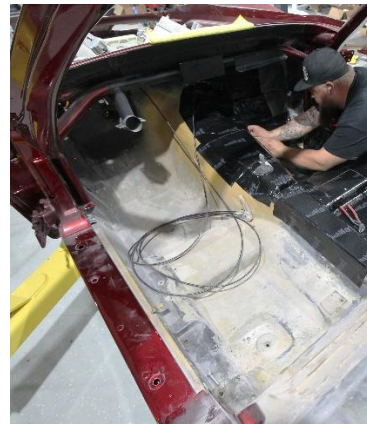
## Tri-Fusion Floor & Firewall Installation Guide

The *New HushMat Tri-Fusion* floor & firewall material is designed to provide you with sound deadening, thermal insulation and airborne sound absorption all from a single material. Measure the length & width of the area you are wanting to treat. We recommend at a minimum measure from the bottom edge of the instrument panel where it meets the firewall to the base of the rear seat riser. This is the minimum treatment area. Multiply length times width divided by 144 to determine the square feet required. Divide the required square feet by 4 and the result is the # of Tri-Fusion sheets you will need for your vehicle. Tri-Fusion consists of a butyl rubber extrusion, aluminum laminate and moisture proof ¼" closed cell foam.



¼" HushMat Silencer sound absorbing foam bonded to Ultra

Ultra sound deadening & insulating material



Remove the seats, carpet and trim panel sections surrounding the firewall and tunnel on both driver and passenger side. Remove carpet pad and any loose foam pieces down to the floor pan surface. There no need to remove factory damping material unless it is delaminating or flaking. If it is delaminating or flaking, remove all the loose pieces.



Start at one straight edge (side rail or base of the firewall) and work either side to side or front to back. Abut the sheets edge to edge using HushMat's Hush Pro Roller to press down on the material. A single layer of material provides outstanding sound and thermal insulation performance.

Remove one sheet from the box and before you peel back the release paper place it onto the surface you plan to install it. Make impressions in the sheet marking any cut-outs you will have to make. Using a razor knife make your cut outs while the release paper is still intact. Then peel back the straight edge release paper at one side and place that side directly on the surface. Apply uniform hand pressure to the sheet and peel back the release paper from the underside applying pressure as you progress across the sheet.

Repeat the above steps until the floor pan is covered. HushMat Ultra is proven to remove a minimum of 40% of the thermal transfer penetrating the floor pan, firewall and tunnel; eliminate structural vibration and absorb engine, wind and tire airborne noise.



*The above provides an installation guide for your vehicle. The Floor Pan kit covers the area from the point the firewall meets the floor to the base of the rear "waterfall" that rises vertically from floor pan to under the rear seat (if applicable). The images and schematic are not intended to reflect the exact dimensions of your Make, Model and Year vehicle.*

HushMat is manufactured in the United States of America and has been for over three decades. Easy to install and performs for the life of your vehicle. Show us your install Tag #HushMatUSA on all photos or video of your ride on social media.