

Instruction Guide

LS Engine Mount Adapters



Speedtech
PERFORMANCE

CHASSIS - SUSPENSION - PRO TOURING - AUTOCROSS - DRAG RACING - CUSTOM BUILDS

435.628.4300 SPEEDTECHPERFORMANCE.COM    

4160 S. RIVER RD, ST. GEORGE, UT 84790



Figure 1 1969 Camaro features our Extreme subframe and LS components [picture by Roger Maniscalco]

Congratulations on the purchase of your new Speedtech Performance LS engine mount adapters. Use only approved, appropriately rated jack and jack stands, and take all required safety precautions to complete the job safely and correctly. If you have any uncertainties, seek the assistance of a highly qualified workshop.

Read and understand all instructions thoroughly before you begin. Your main assembly and setup of your new LS engine mount adapters can be done in a home garage with hand tools.

Speedtech enjoys seeing the progress our customers are making as they work through their builds. Join the group Team Speedtech on Facebook and share your pictures and story.

Speedtech Performance wishes you the best with your project!

TABLE OF CONTENTS

1.0	GENERAL INFORMATION.....	4
1.1	THIS GUIDE	4
1.2	OVERVIEW	4
1.3	TOOLS	4
2.0	CHECK IN PARTS AND HARDWARE.....	4
2.1	CHECKING IN THE ORDER	4
2.2	CHECK IN TABLES	4
3.0	GETTING STARTED / INSTALLATION	5
3.1	LEVELING AND SUPPORT	5
3.2	INSTALLATION - PLATE	5
3.2	INSTALLATION – MOUNT	5
4.0	CONGRATULATIONS	6

1.0 GENERAL INFORMATION

[Back to Table of Contents](#)

1.1 THIS GUIDE

Thank you for purchasing your new Speedtech Performance LS engine mount adapters. Read all instructions thoroughly before beginning, and take all required safety precautions to do the job carefully and correctly.

1.2 OVERVIEW

These instructions outline the Extreme LS engine mount adapters that will be installed with the Speedtech Performance Extreme chassis. Photos in the instruction process may vary slightly from your exact operation.

1.3 TOOLS

Installation of the Speedtech Performance LS engine mount adapters can be done on the floor with simple hand tools.

Additional things to have before you start:

- Allen Wrench
- Socket Set
- Blue Loctite

2.0 CHECK IN PARTS AND HARDWARE

[Back to Table of Contents](#)

2.1 CHECKING IN THE ORDER

Check in your order as soon as possible. To check the order, Speedtech has provided a table that can serve as a checklist, as shown in Figure 2. All bolts and nuts are NF unless otherwise noted. Hardware comes in several boxes. If you discover anything missing from your order, call your authorized dealer as soon as possible.

2.2 CHECK IN TABLES

X	#	Description	Size
	2	Billet Adapter Plates (one left, one right)	
	4	Adaptor Plater to Block Flat Head Bolt	M10x35 FHCS
	6	Adaptor Plater to Block Socket Head Cap	M10x30 SHCS
	6	Flat Washers	M10
	6	Motor Mount Bolt	3/8-24x3/4
	6	Flat Washer	3/8

Figure 2: Check in table with amounts, descriptions, and sizes

NOTE: There may be some extra hardware that was packaged but is not accounted for in the checklist. The hardware kits are designed to fit multiple products; hence, there may be a surplus of supplies.

3.0 GETTING STARTED / INSTALLATION

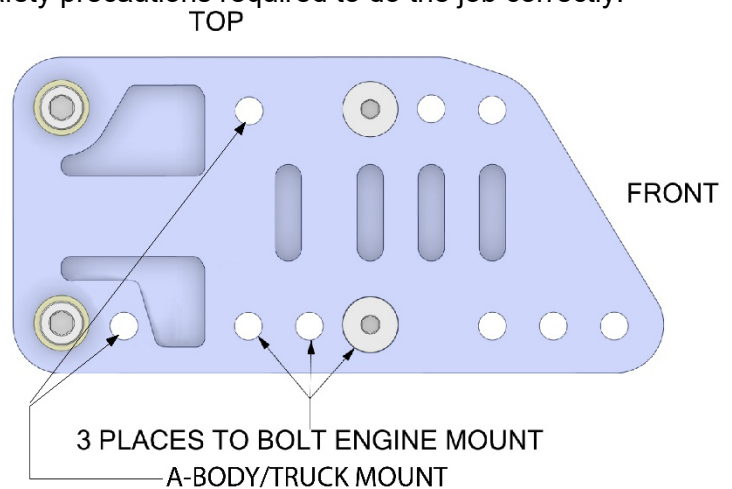
[Back to Table of Contents](#)

3.1 LEVELING AND SUPPORT

Properly support the vehicle. This can also be assembled on a workbench. Take all necessary precautions when jacking up your vehicle, and use safe, sturdy jack stands to support it while it is off the ground. Be sure to take all other safety precautions required to do the job correctly.

3.2 INSTALLATION - PLATE

- Locate the two adapter plates. They are labeled driver and passenger.
- Bolt the adapter plates onto the engine block. Use (2) SHCS with washers and (2) FHCS. Refer to the diagram to determine the orientation of the plate on the block.
- On final assembly, use blue Loctite and torque to 37 ft.lb.



3.2 INSTALLATION – MOUNT

- Determine where the motor mounts need to be attached to the adapter plate for your application. There are three locations.
- Bolt the motor mount to the adapter plate using the 3/8 bolts and washers.

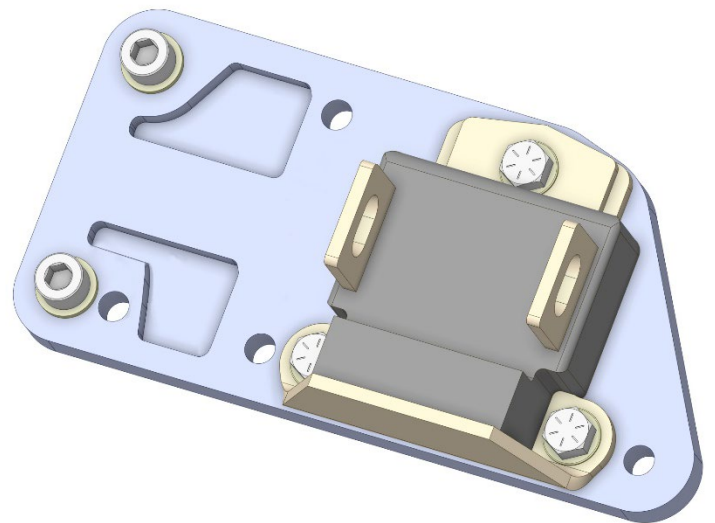
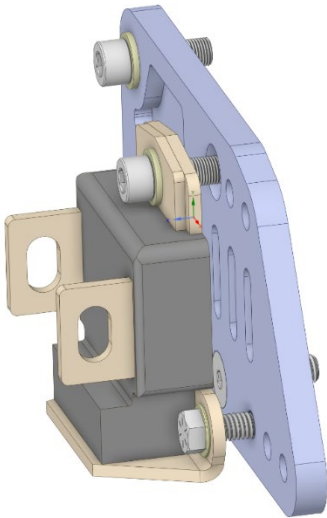


Figure 3: Two models of the installation of plates and mounts



NOTE: If a motor mount bolt location lands on a flat head block bolt, replace the M10 flathead and 3/8 bolt with the provided extra M10 SHCS and washer. Bolt through the motor mount and adapter plate into the block.

Figure 4: Finished assembly

4.0 CONGRATULATIONS

[Back to Table of Contents](#)

Congratulations on completing your project! We know you will get many years of enjoyment from your project. Please join the Team Speedtech group on Facebook. Team Speedtech is a community of customers, dealers, and factory employees who have a passion for pro-touring muscle cars and use Speedtech Performance products. You can ask questions, get advice from group members, and share your experience. Everyone enjoys seeing the videos and pictures as your project progresses, and Speedtech encourages you to share them!

Thank you for choosing Speedtech Performance and entrusting us with your LS engine mount adaptors for your custom muscle car.

Speedtech Performance, LLC
4160 S. River Rd.
St George, UT, 84770
(435) 628-4300