

Technical Support Line: (952) 985-5675 Email: sales@QA1.net

## INSTALLATION INSTRUCTIONS

QA1 P/N 52825

'82-'92 F-Body Front Sway Bar

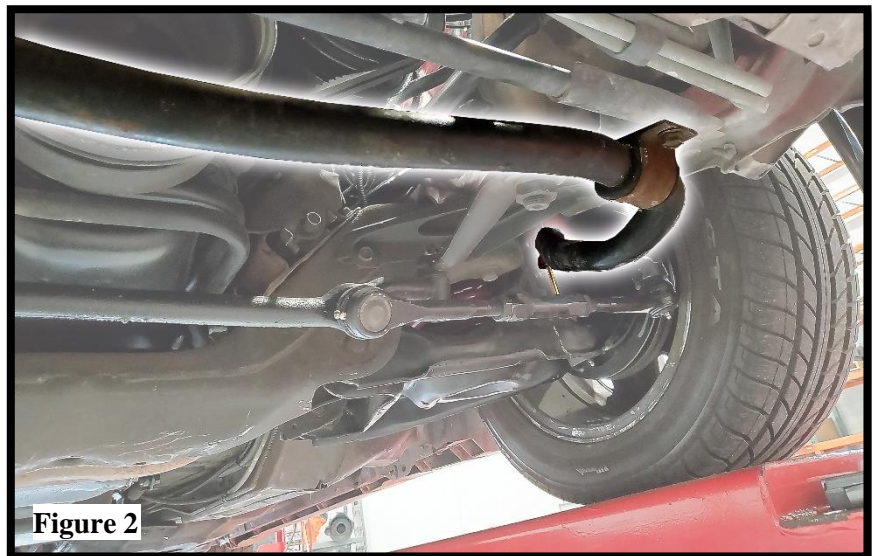
## TOOLS AND SUPPLIES REQUIRED

- Floor Jack • Jack Stands
- Ratchet & SAE or Metric Socket Set
- SAE or Metric Wrench Set
- Grease Gun

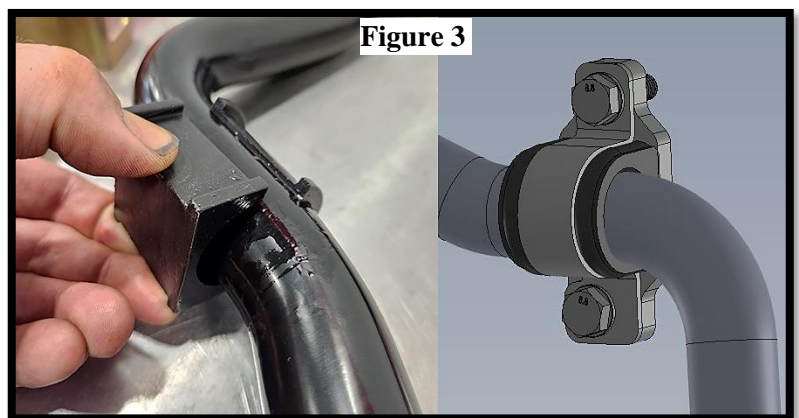
### Installation Instructions

1. Raise the vehicle and support with jack stands on a stable surface.
2. Remove the end-links from the vehicle. **(Figure 1)**
3. Support the sway bar and then remove the bushing brackets from the frame to remove the sway bar. **(Figure 2)**

**Caution: Sway bars are heavy steel parts that can cause injury if not supported during removal or installation.**



4. Apply the supplied grease to the QA1 sway bar bushings where it will contact the sway bar. Note that the bushings have a split to ease installation. Install the bushings on the QA1 sway bar. **(Figure 3)**

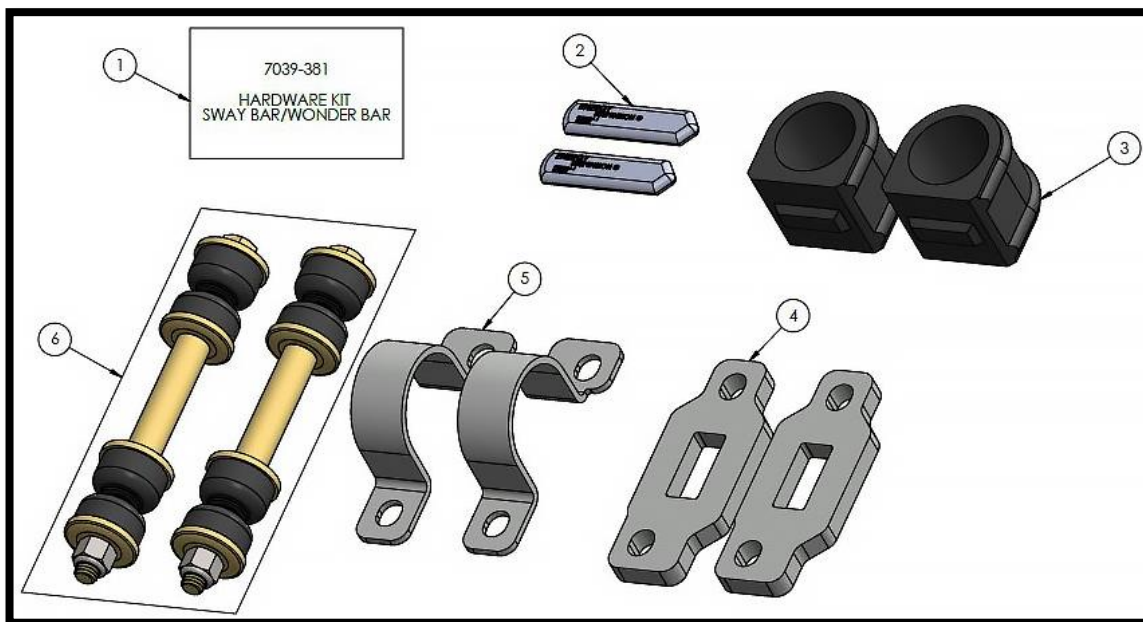


**NOTE:**

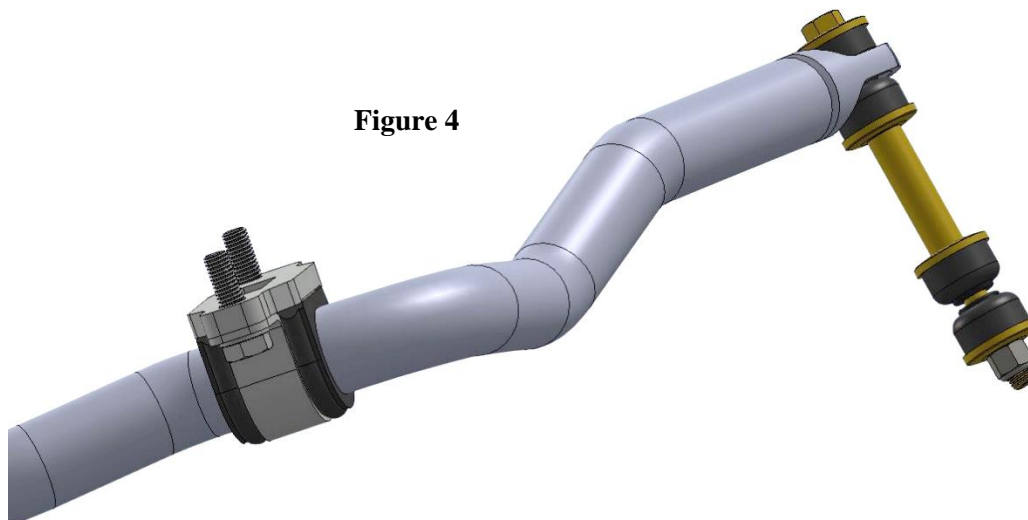
Some factory vehicles came with a front sway bar mounted under the wonder bar, a support bar mounted between the frame rails for steering support. This QA1 sway bar should be mounted in the factory location under the factory wonder bar. Consider upgrading to the QA1 Wonder Bar part number 52122.

- 5. Install the included spacers (#4) between the frame rail and sway bar bushings. If the car has a wonder bar, mount the spacers between the wonder bar and bushings. The bolt holes are offset. Ensure the plates and brackets are in the correct orientation and location before installation. (Figure 5) The same figure 5 shows the three additional bolts for the wonder bar mounting.

BALLOON #	ITEM #	DESCRIPTION	QTY.
1	7039-381	HARDWARE KIT, SWAY BAR/WONDER BAR	1
2	9071-109	TUBE, TEFLON LUBE (POLY BUSHING LUBE)	2
3	9032-342	BUSHING, SWAY BAR FRAME MOUNT, 35MM	2
4	9039-404	PLATE, SPACER, SWAY BAR	2
5	9039-403	BRACKET, STRAP, SWAY BAR	2
6	1681-109	END LINK KIT, SWAY BAR, 2" SLEEVE	1



- 6. Torque the bushing bracket bolts to 37 lb. ft.



**Figure 4**

7. With the suspension loaded, install the supplied end link kits the same way the OEM links were installed. **(Figure 4)** The end links will not be able to be installed with the suspension at full droop. With the new bushings having never been compressed, the end links may seem too short. Clamps or straps may aid in compressing the bushings during installation.

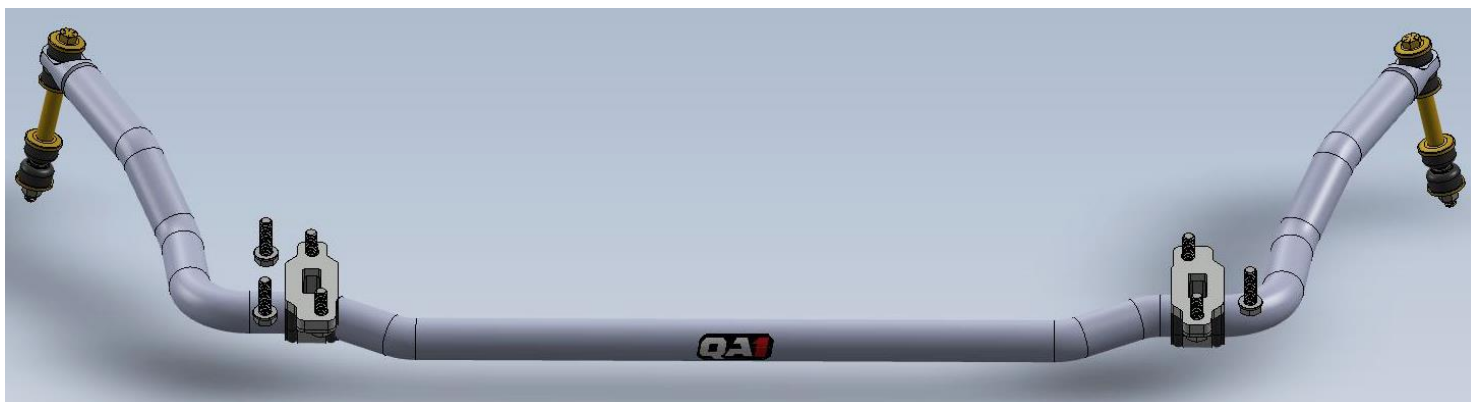
**NOTE:**

If also installing QA1 lower control arms, the lower control arms will come with a different style end link and instructions on how to install this bar to the QA1 control arms.

8. Tighten the sway bar end-link bushings to 15 lb. ft.

9. Check for any contact with the steering linkage, brake line or frame braces. Turn the wheel from full-lock left to full-lock right to verify sufficient clearance. Adjust the sway bar as needed.

10. Use caution on the first test drive until you are accustomed to the vehicle’s new response to steering inputs.



**Figure 5**

QTY/KIT	DESCRIPTION	2ND DESCRIPTION	WHERE USED ON VEHICLE
7	BOLT, HEX, M10-1.5 X 35MM	CLASS 8.8, CLEAR ZINC, DIN 933	SWAY BAR/WONDER BAR TO FRAME
7	WASHER, FLAT, M10	10.5MM ID X 20MM OD X 2MM THICK, CLEAR ZINC, DIN 125	

# DEDICATED TECH SUPPORT

QA1 is dedicated to providing quality support and instructions. We employ passionate racers and car enthusiasts that know our products and the industry to better serve you.

*CHECK US OUT ON YOUTUBE!*



- Frequently Asked Questions
- Quick Tips
- Install Information
- Tuning and Repair Guides
- Other Technical Information



- [linkedin.com/company/qa1](https://www.linkedin.com/company/qa1)
- [instagram.com/qa1motorsports](https://www.instagram.com/qa1motorsports)
- [facebook.com/qa1motorsports](https://www.facebook.com/qa1motorsports)

[www.qa1.net/tech](http://www.qa1.net/tech)

[youtube.com/qa1tech](https://www.youtube.com/qa1tech)



**Technical Support Line: (952) 985-5675 Email: sales@QA1.net**

READ ALL INSTRUCTIONS CAREFULLY AND THOROUGHLY PRIOR TO STARTING INSTALLATION. PRODUCTS THAT HAVE BEEN INSTALLED ARE NOT ELIGIBLE FOR RETURN. USE THE PROPER JACKING LOCATIONS. DEATH OR SERIOUS INJURY CAN RESULT IF INSTRUCTIONS ARE NOT CORRECTLY FOLLOWED. A GOOD CHASSIS MANUAL, AVAILABLE AT YOUR LOCAL PARTS STORE, MAY ALSO AID IN YOUR INSTALLATION.

**• DISCLAIMER / WARRANTY •**

QA1 WARRANTS THAT THE PRODUCTS WILL BE FREE FROM DEFECTS IN MATERIAL AND WORKMANSHIP FOR ONE YEAR FROM DATE OF SALE TO THE ORIGINAL PURCHASER. QA1 MAKES NO OTHER WARRANTY OF ANY KIND, EXPRESS OR IMPLIED. QA1 SHALL HAVE NO OBLIGATION UNDER THE FOREGOING WARRANTY WHERE THE DEFECT IS THE RESULT OF IMPROPER OR ABNORMAL USE, YOUR NEGLIGENCE, VEHICLE ACCIDENT, IMPROPER OR INCORRECT INSTALLATION OR MAINTENANCE, NOR WHEN THE PRODUCT HAS BEEN REPAIRED OR ALTERED IN ANY WAY. QA1'S LIABILITY IN THE CASE OF DEFECTIVE PRODUCTS SUBJECT TO THE FOREGOING WARRANTY SHALL BE LIMITED TO THE REPAIR OR REPLACEMENT, AT QA1'S OPTION, OF THE DEFECTIVE PRODUCTS.

THE USER UNDERSTANDS AND RECOGNIZES THAT RACING PARTS, SPECIALIZED STREET ROD EQUIPMENT, AND ALL PARTS AND SERVICES SOLD BY QA1 ARE EXPOSED TO MANY AND VARIED CONDITIONS DUE TO THE MANNER IN WHICH THEY ARE INSTALLED AND USED. QA1 SHALL BEAR NO LIABILITY FOR ANY LOSS, DAMAGE OR INJURY, EITHER TO A PERSON OR TO PROPERTY, RESULTING FROM THE INSTALLATION, DIRECT OR INDIRECT USE OF ANY QA1 PRODUCTS OR INABILITY BY THE BUYER TO DETERMINE PROPER USE OR APPLICATION OF QA1 PRODUCTS. WITH THE EXCEPTION OF THE LIMITED LIABILITY WARRANTY SET FORTH ABOVE, QA1 SHALL NOT BE LIABLE FOR ANY CLAIMS, DEMANDS, INJURIES, DAMAGES, ACTIONS, OR CAUSES OF ACTION WHATSOEVER TO BUYER ARISING OUT OF OR CONNECTED WITH THE USE OF ANY QA1 PRODUCTS. MOTORSPORTS ARE DANGEROUS; AS SUCH, NO WARRANTY OR REPRESENTATION IS MADE AS TO THE PRODUCT'S ABILITY TO PROTECT THE USER FROM INJURY OR DEATH. THE USER ASSUMES THAT RISK!