



# INSTALLATION GUIDE

# CHARGE PIPE

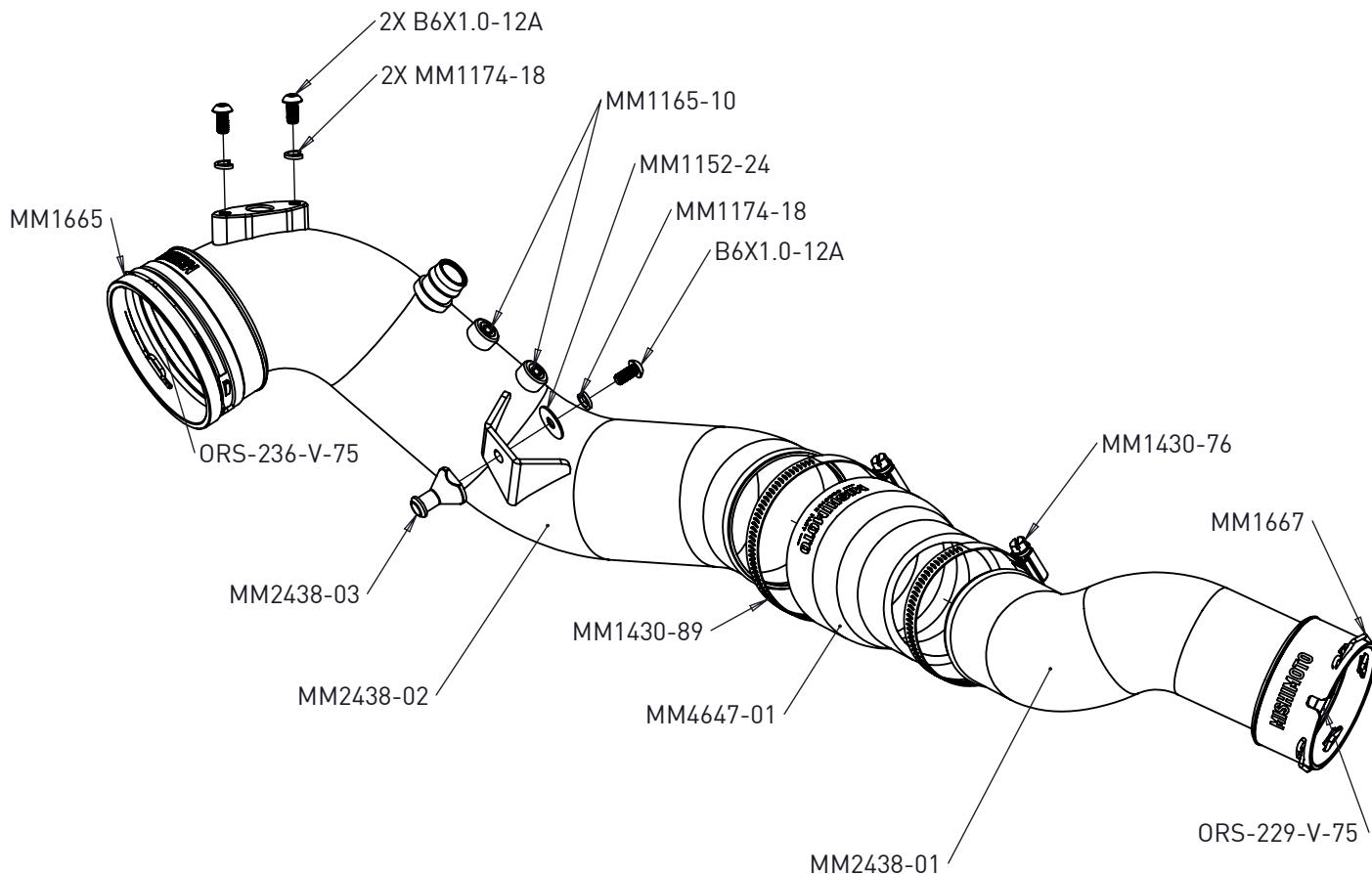
## FITS 2011–2015 BMW F2X/F3X N55

### TABLE OF CONTENTS

- Pg 1** RESOURCES AND CONTACT INFORMATION
- Pg 2** EXPLODED VIEW
- Pg 3** IMPORTANT SAFETY INFORMATION  
REQUIRED TOOLS  
INSTALLATION INSTRUCTIONS
- Pg 5** DISPOSAL INSTRUCTIONS  
WARRANTY INFORMATION

### RESOURCES & CONTACT

-  **CALL 1-877-GOMISHI**  
CUSTOMER SERVICE HOURS: MON-FRI 8:30AM-5:00PM EST
-  **MISHIMOTO**
-  **GOMISHIMOTO**
-  **MISHIMOTO**
-  **WEBSITE**  
[WWW.MISHIMOTO.COM](http://WWW.MISHIMOTO.COM)
-  **ENGINEERING BLOG**  
[WWW.MISHIMOTO.COM/ENGINEERING](http://WWW.MISHIMOTO.COM/ENGINEERING)



**PARTS BREAKDOWN**

PART NUMBER	DESCRIPTION	QTY
MM2438-01	Pipe Weldment 1	1
MM2438-02	Pipe Weldment 2	1
MM4647-01	Coupler	1
MM1667	Spring Clip	1
MM1665	Spring Clip	1
MM2438-03	Peg	1
MM1165-10	1/8 Npt Plug	2
MM1152-24	M6 Flat Washer	1

**PARTS BREAKDOWN**

PART NUMBER	DESCRIPTION	QTY
MM1174-18	Lock Washer	3
B6X1.0-12A	M6 12mm Button Head Bolt	3
MM1430-76	52-76mm High Torque Worm Gear Clamp	1
MM1430-89	65-89mm High Torque Worm Gear Clamp	1
ORS-236-V-75	-236 O-Ring	1
ORS-229-V-75	-229 O-Ring	1

Continued on next page

## IMPORTANT SAFETY INFORMATION

- › Mishimoto recommends you use safety glasses and protective gloves during the installation of our products
- › Raise vehicle only on jack stands or on a vehicle lift
- › Allow vehicle to cool completely prior to attempting installation
- › Do not run the engine or drive the vehicle while overheating; serious damage can occur
- › Please dispose of any liquids properly
- › Mishimoto is not responsible for any vehicle damage or personal injury due to installation errors, misuse, or removal of Mishimoto products
- › If you need any assistance while installing our products, reach out to our Customer Service Team at 1-877-GOMISHI

## REQUIRED TOOLS

SMALL PICK TOOL	¼" RATCHET
PHILLIPS HEAD SCREWDRIVER	¼" EXTENSION
4MM ALLEN WRENCH	8MM SOCKET
5MM ALLEN WRENCH	19MM WRENCH

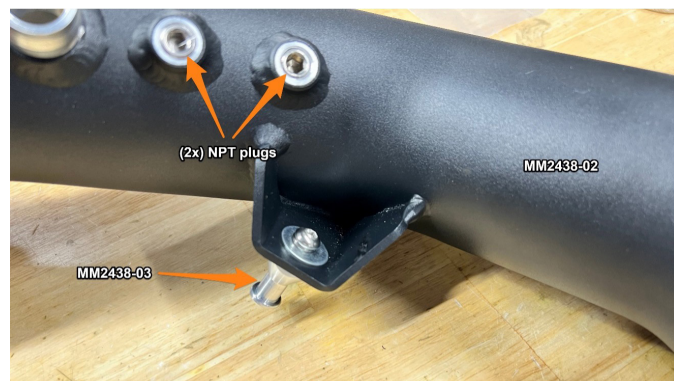
**INSTALL TIME: 3 HOURS**

**INSTALL DIFFICULTY:** 

## INSTALLATION INSTRUCTIONS

**Note:** To avoid potential injury, wait for the engine to cool off before beginning installation.

1. Remove the pressure sensor from the stock charge pipe then remove the stock charge pipe. On the M2, this is most easily done by removing the splash shield and intercooler and then dropping the rad fan out the bottom.
2. Use a 5mm Allen wrench to verify the 2x NPT plugs are tight. Install the peg onto pipe 2 using the supplied M6 bolt and washers. Use a 4mm Allen wrench to tighten and counterhold with a 19mm or adjustable wrench.



3. Slide the coupler onto pipe 2 and slip the 65-89mm worm gear clamp over the coupler.



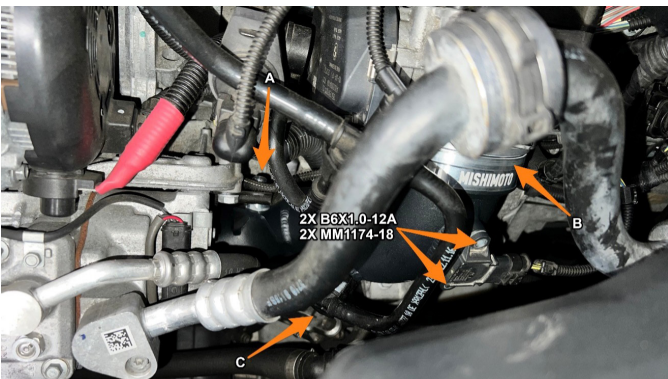
Continued on next page



4. Install the pipe 2 assembly in the vehicle through the bottom, quick-disconnect end first, as shown.



5. Ensure the peg is aligned with the bushing (A) then push the quick connect (B) onto the throttle body until the spring clip snaps into the groove. Reinstall the pressure sensor into pipe 2 using the supplied M6 screws and washers. Push hose (C) onto the pipe until it clicks.



6. Slip the 52-76mm worm gear clamp onto the coupler, then slide pipe 1 into the coupler. Leave the clamps loose for now.

7. Reinstall the radiator fan and intercooler. Push the quick connect fitting onto the intercooler until the spring clip snaps into the groove.



8. The aluminum reinforcing plate can be removed to make the next step much easier on the M2 model. Position the coupler on the pipes from the bottom so it is centered between the beads. Arrange the clamps on the coupler so they are centered between the bead "bump" and the end of the coupler. Then, use an 8mm socket and long extension to tighten the 2 clamps from below.



9. Reassemble the vehicle and test drive to check for boost leaks.

**Congratulations! You have finished your installation.**

Continued on next page

## DISPOSAL INSTRUCTIONS

- › Do not dispose of any product as unsorted municipal waste. Use separate collection facilities. Contact your local authority for information regarding the collection systems available.
- › Never improperly dispose of any coolant, oil, or other chemicals.

## WARRANTY INFORMATION



- › All claims must be accompanied with a picture of the Mishimoto product showing the issue for which the claim is being submitted.
- › Mishimoto asks that the customer inspect their purchased item for any damage immediately upon arrival.
- › Any product deemed dead on arrival (DOA) must be claimed within 14 business days of delivery. Claims outside of this time frame will not be covered under the Mishimoto Lifetime Warranty.
- › This warranty does not include payment and/or reimbursement of the cost of labor in connection with the removal of any product returned pursuant to the warranty policy or in connection with the installation of any replacement items provided under the warranty policy.
- › Mishimoto has the right to refuse a claim at any time.

- › When Mishimoto accepts a claim, Mishimoto retains full discretion to choose if it will: (i) repair or replace purchaser's original Mishimoto product; (ii) replace purchaser's original Mishimoto product with the most current available model; or (iii) provide the purchaser with a gift card redeemable on [Mishimoto.com](http://Mishimoto.com) in the amount of the original purchase price of the original Mishimoto product. The provision of a replacement of a Mishimoto product is subject to availability and Mishimoto retains the right to substitute any warranty claim item with a comparable item or credit at any time.
- › If Mishimoto determines that it will provide a replacement item in connection with a claim under this warranty policy, and such item is out of stock, Mishimoto will place the customer on backorder and ship the replacement product to the purchaser once it becomes available.
- › Mishimoto is not liable for incorrect shipments in connection with a claim if a claim form is completed incorrectly, or if a model number is not included in a claim.
- › If you have a vehicle equipped with an automatic transmission, please make sure to specify this within the text box on the claim form. Mishimoto is not responsible for incorrect replacement shipments if transmission type is not indicated.



**WARNING**  
Cancer and  
Reproductive Harm  
[www.P65Warnings.ca.gov](http://www.P65Warnings.ca.gov)

This product can expose you to chemicals which are known to the state of California to cause cancer. For more information visit: [www.p65warnings.ca.gov](http://www.p65warnings.ca.gov)